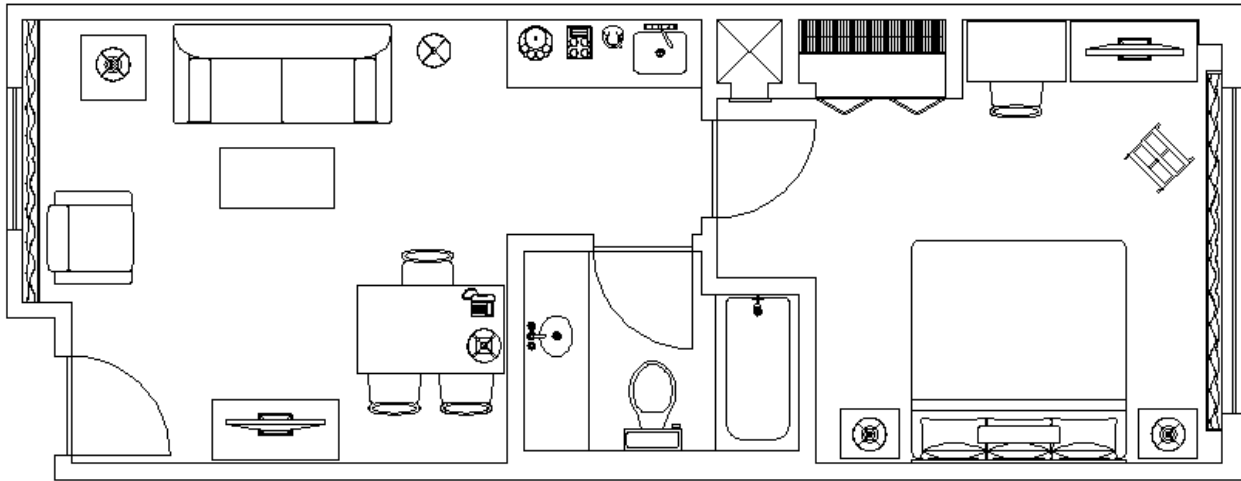


When you are done, your drawing will look like this:



Creating Layers

Now that we have the Floor Plan completed, we can create layers and move the objects to the new layers. This will allow us to show only the items that we want to see. For this tutorial, we will create layers “Structure”, “Furniture”, “Fixtures”, and “Misc”. We will assign colors and lineweights to each layer.

38. Bring up the Properties Manager. The icon is on the Layers toolbar.



Layers toolbar

Layer Properties Manager icon

(Pick Layer Properties Manager icon)

The Layer Properties Manager dialog box will appear.