

Daniel John Stine AIA, CSI, CDT  
Jeff Hanson

Autodesk®

# Revit® 2021 Architectural Command Reference



Better Textbooks. Lower Prices.  
[www.SDCpublications.com](http://www.SDCpublications.com)



**ACCESS CODE**  
UNIQUE CODE INSIDE

Visit the following websites to learn more about this book:



[amazon.com](https://www.amazon.com)

[Google books](https://books.google.com)

[BARNES & NOBLE](https://www.barnesandnoble.com)



## Chapter 4

# Structure Tab

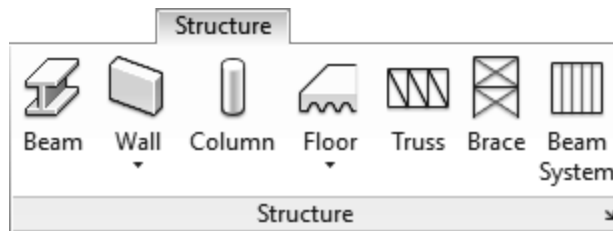
---

The Structure tab contains tools to model or document the structural elements of a building, such as columns, beams, footings, etc. Some of the tools on this tab have already been covered in the previous chapter and will not be repeated; a note is added to refer to the previous chapter in each case. Additionally, given the platform/architectural focus of this book, the reinforcement tools, the Steel tab, and the Precast tab will not be covered.



## 4.1 Structure tab: Structure panel

The Structural panel contains the fundamental structural element commands. These tools are used by architects and structural engineers to model existing conditions and new construction. The icon in the lower right opens the **Structural Settings** dialog, which is covered in the Manage tab chapter.



It is often helpful to model structural elements in the order they are built, which directly corresponds to how things are supported... for example, a beam is supported by a column or structural wall. However, footings and foundations are often modeled last, unless modeling existing conditions.

It is often best to add **Grids** first and then **Columns** and/or **Structural Walls**. Once the columns/walls are in place, **Beams** will automatically connect and clean up with them.

One more thing to point out: architectural plans are a view of the model from the **floor up**. Structural plans are a view of the model from the **floor down**. The beams and columns in a structural plan are what support the floor. Thus, the View Range settings are quite different between an architectural floor plan view and a structural floor plan view.

### Beam

A Beam is any **horizontal load-bearing** member. For example, a wide flange beam, a bar joist, a wood joist, a precast plank, etc.

#### Beam: Ribbon

The **Load Family** option provides a convenient way to bring in additional

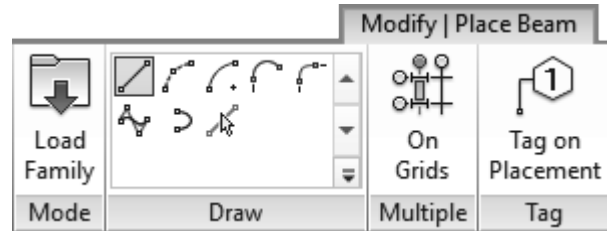
### quick steps

#### Beam

1. Ribbon
  - Load Family
  - Draw *panel*
    - i. *Default:* straight segment
  - Multiple: On Grids
  - Tag on Placement
2. Options Bar
  - Placement Plane
  - Structural Usage
  - 3D Snapping
  - Chain
3. Type Selector
  - Select Beam type
4. Properties
  - Several geometric position parameters
  - See warning
5. In-Canvas
  - Pick two points to place beam

content without needing to cancel the current command and switch to the Insert tab.

The **Draw** panel offers the typical sketch options used to define the shape of the beam in plan view. The **Pick Lines** option provides a fast way to create beam lengths based on other line work in the model, including lines from lined CAD files.



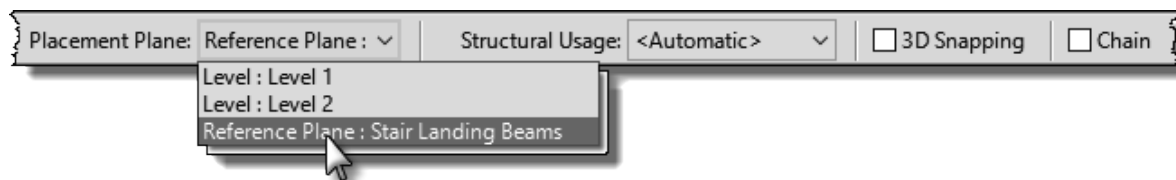
The **On Grids** option is used to place multiple beams based on selected grid lines; a beam is added along a grid line, between two intersecting grids. This feature requires columns at each grid intersection.

The **Tag on Placement** toggle causes Revit to place a beam tag with each beam created. Tags can be deleted at any time and they can also be added later using the Tag by Category command.

During preliminary design tags are often left off the drawings to avoid clutter while the design is being developed. Also, in many cases, existing structural elements are never tagged unless they are in close proximity to an area being remodeled or expanded.

### Beam: Options Bar

The **Placement Plane** drop-down defines the vertical position of the beam. In a plan view, the default setting corresponds to the level associated with the current view. All Levels and named horizontal reference planes appear in this list. In a 3D view, this list also shows grid lines to help constrain the placement of beams.



**Structural Usage** is a way to categorize different types of support elements, such as in schedules or to control visibility. It is also relevant information when the structural model is exported to a structural analysis software such as Autodesk Robot Structural Analysis, RISA 3D or Bentley STAAD/RAM. Best practice is to leave this set to “Automatic.”

When working in 3D views and a sloped beam is desired, clicking the **3D Snapping** is required. Otherwise, Revit is constrained to the work plane.

**Chain** is a common option in Revit which allows continuous sequential picks without the need to re-pick the previous point to define the start point of the next element.

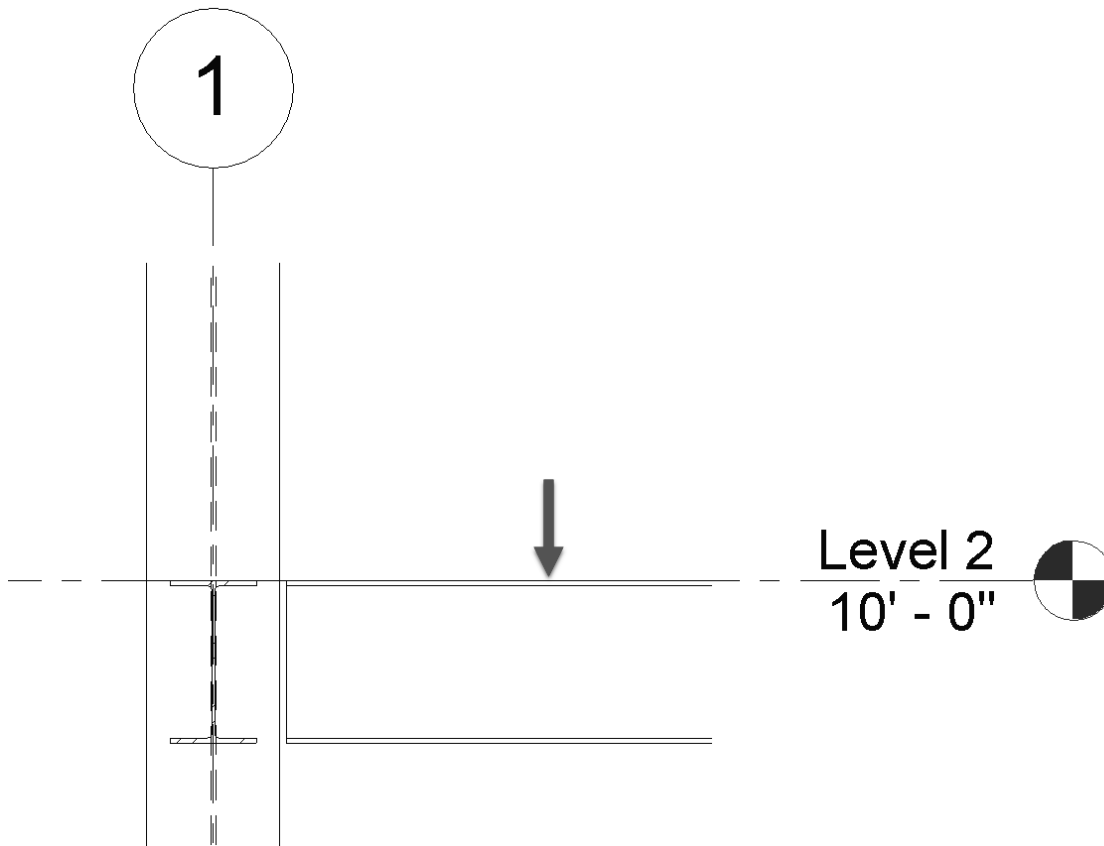
**Beam: Type Selector**

Available beam types, which have been previously loaded in the current project, are listed in the **Type Selector**. If a required size/shape is not listed, use the **Load Family** command.

Do not try to browse to the Windows folder containing the beam family files as this will bypass the **Type Catalog** feature which limits the number of sizes/shapes loaded for each family.

**Beam: Properties**

By default, beams are placed with the top, which is the bearing surface for floors and joists, aligned with the level as shown in Figure 4.1-1 below. This often needs to be repositioned downward as the top of the floor is what needs to align with the Level (the main level is often referred to as “finished floor”). This vertical adjustment can be achieved by editing the beam’s **Start Level Offset** and **End Level Offset** values (e.g. -0’-4”).



**Figure 4.1-1** Structural beam default vertical alignment

One exception is if additional Levels are added to manage “top of steel.” In this case, the special Level should have **Building Story** un-checked, and **Structural** checked in the Level’s properties.

One challenge for architects who want to create **photo-realistic renderings** with exposed structural is that the material setting is an instance parameter for every beam and column. The default Appearance Asset is Stainless Steel with a Satin finish. This looks great, but is an unrealistic, not to mention expensive, option. The easiest way to adjust the material is to just edit the one already assigned to the beams and columns rather than trying to apply a new/different material. Changing the Appearance Asset will not affect the Physical Asset, which is important for structural analysis.

**Warning:** If 3D Snapping is checked, a beam could be sloped but not apparent in a plan view. It is helpful to have a 3D view which only shows the structural model to quickly visually validate the structural model.

### Beam: In-Canvas

With the Beam command active, click at the intersection of Grids or Columns or on Structural Walls.

If a View's **Discipline** parameter is set to **Structural**, only Structural walls will appear. All other (non-structural) walls are hidden—there is no way to make these walls show up without changing the Discipline setting.

The **View Control Bar** at the bottom left of the document window has a toggle called **Show Analytical Model**. This is helpful in 3D views to ensure all structural elements are properly connected. This also corresponds to the Analytical Model Categories tab within the Visibility/Graphic Overrides dialog (Figure 4.1-2).

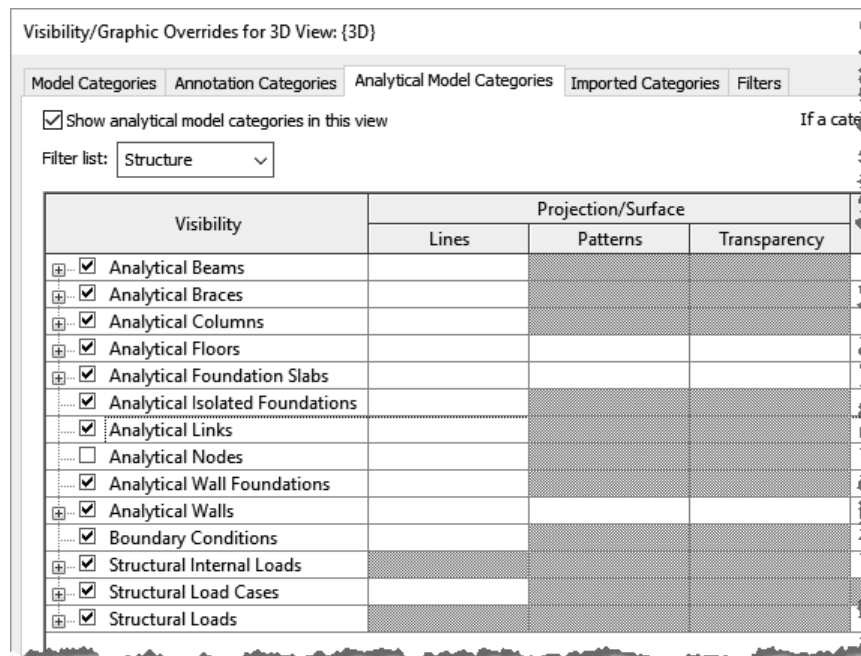


Figure 4.1-2 Visibility/Graphic Overrides dialog; Analytical tab

### Wall: Structural

Note: See Chapter 3 – Architecture Tab for detailed coverage of the Wall tool.

A structural wall is any wall, as determined by a structural engineer, which supports a load from another element (such as a floor, column or roof) or acts as a shear wall. A Structural wall is an Architectural wall with the *Structural* parameter checked; notice in *Object Styles* and *Visibility/Graphic Overrides* there is no Structural Wall category.

For a Wall, when the Structural parameter is checked, several additional structural parameters become available (Figure 4.1-3).

There are two main things one should understand about Structural Walls:

- When a view's Discipline parameter is set to Structural, only structural walls are visible. All non-structural walls are automatically hidden.
- When using external structural analysis tools (e.g. Autodesk Robot or RISA Technologies) only Structural walls are exported and considered.

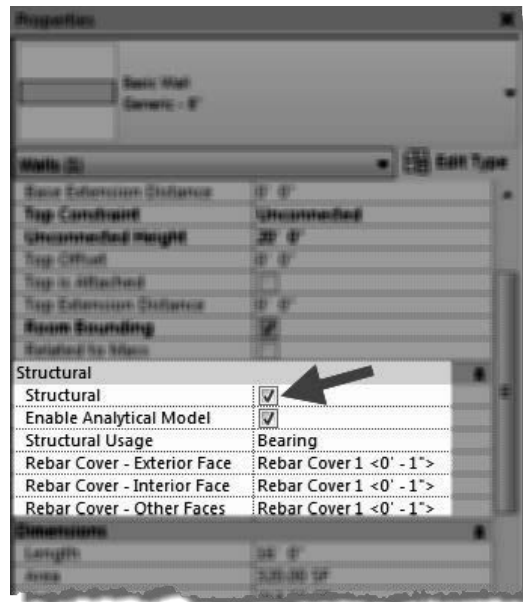
The **Structural Bearing** parameter has three options to choose from:

- Bearing
- Shear
- Structural Combined

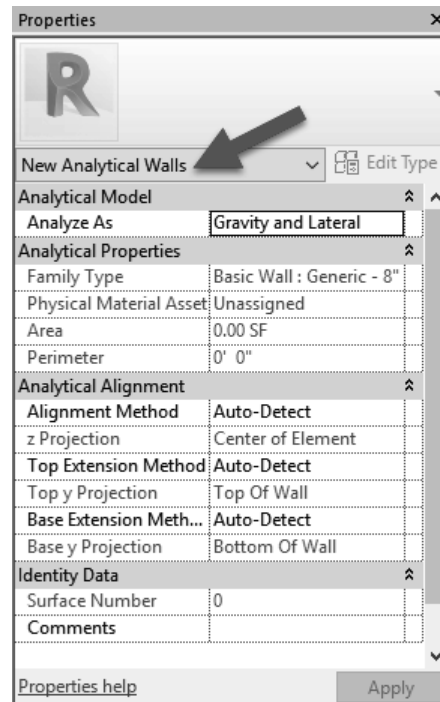
While creating a structural wall, changing the **Properties Filter** to New Analytical Walls (Fig. 4.1-4) reveals additional parameters related to structural design.

### Wall: Architectural

Note: See Chapter 3 – Architecture Tab for detailed coverage of this tool.



**Figure 4.1-3**  
Structural wall setting and parameters



**Figure 4.1-4**  
Analytical Wall Properties



## Wall: Sweep

Note: See Chapter 3 – Architecture Tab for detailed coverage of this tool.

## Wall: Reveal

Note: See Chapter 3 – Architecture Tab for detailed coverage of this tool.

## Structural Column

A Structural Column is a **vertical load-bearing element** which works in conjunction with other structural elements to define, geometrically and analytically, a building's structural system.

Do not confuse Architectural Columns, found on the Architecture tab, with this command. Those columns are meant to represent aesthetic shapes and column covers (i.e., interior finishes)—but do not work with the structural analytical features.

### Structural Column: Ribbon

The **Load Family** option provides a convenient way to bring in additional content without needing to cancel the current command and switch to the Insert tab.

Be sure to select structural, not architectural columns when loading this way.

The default Placement option is **Vertical Column**. This simply means the column is vertical to the floor level. Switching to **Slanted Column** provides the means to model an angled column—via additional options on the Options Bar.

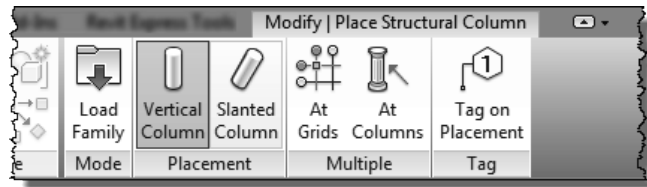
quick steps

### Structural Column

1. Ribbon
  - Load Family
  - Vertical Column
  - Slanted Column
  - *Insert multiple columns*
    - At Grids
    - At Columns
  - Tag on Placement
2. Options Bar
  - Rotate after Placement
  - Level (3D Views)
  - *Select Direction*
    - Depth (downward)
    - Height (upward)
  - *Select Top Constraint*
    - Pick a Level *or*
    - Unconnected
      - i. Enter Height
3. Type Selector
  - Select Column Type
4. Properties
  - See Warning
5. In-Canvas
  - Spacebar to rotate
  - FYI: May not see column until placed or due to view settings

The **At Grids** option is used to place multiple columns based on selected grid lines; a column is added at the intersection of all selected grids. Columns are not added at grid intersections which already contain a column.

The **At Column** option provides a way to place a Structural Column at the center of an Architectural Column. This option is likely not used very often as the structural engineer usually places columns at Grid intersections and cannot assume the architectural column (aka an interior finish) is placed accurately enough.



The **Tag on Placement** toggle causes Revit to place a beam tag with each beam created. Tags can be deleted at any time and they can also be added later using the Tag by Category command.

During preliminary design tags are often left off the drawings to avoid clutter while the design is being developed. Also, in many cases, existing structural elements are never tagged unless they are in close proximity to an area being remodeled or expanded.

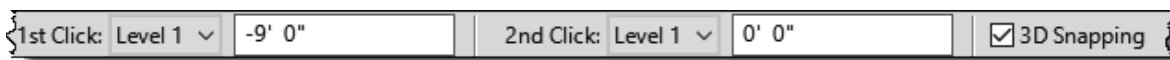
### Structural Column: Options Bar

When the **Rotate after Placement** is checked, Revit prompts for a rotation angle after clicking a position in the model to place the column. It is also possible to simply press the **Space Bar** to rotate the column in 90 degree increments, or relative to nearby angled elements.

Structural Columns, like Structural Walls, are placed from the floor level down—thus, **Depth** is the default setting on the Options Bar. This can be changed to **Height** if desired.

The Depth/Height of a Structural Column can have a specific height (i.e., **Unconnected**) or be parametrically associated with a Level in the model. This can be changed after placement as well. When Unconnected is selected, a length value is entered in the textbox.

When **Slanted Column** is selected on the Ribbon, the Options Bar changes as shown below. These options allow a sloped column to be defined in a plan view by picking two points. The first point is the bottom of the column and the second corresponds to the top. Both the Level and Offset can be set for each pick to define the vertical position for the top/bottom.



The **3D Snapping** option, which appears when Slanted Column is selected on the Ribbon, will snap to geometry in the model rather than the values entered for the two picks.

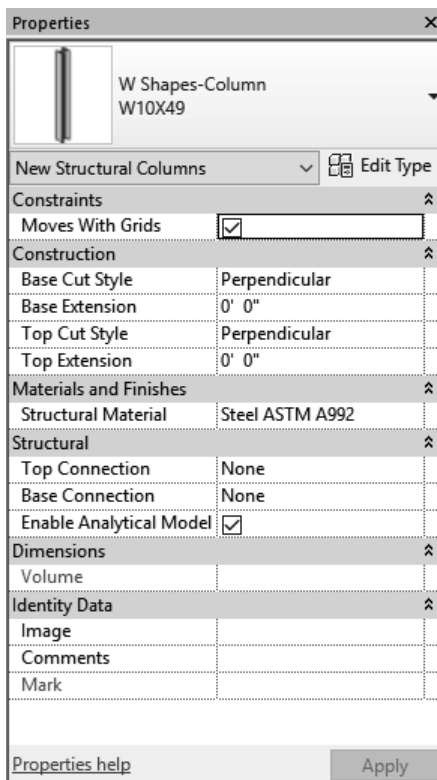
## Structural Column: Type Selector

Available Structural Columns types, which have been previously loaded in the current project, are listed in the **Type Selector**. If a required size/shape is not listed, use the **Load Family** command. Architectural Columns are not listed in the Type Selector.

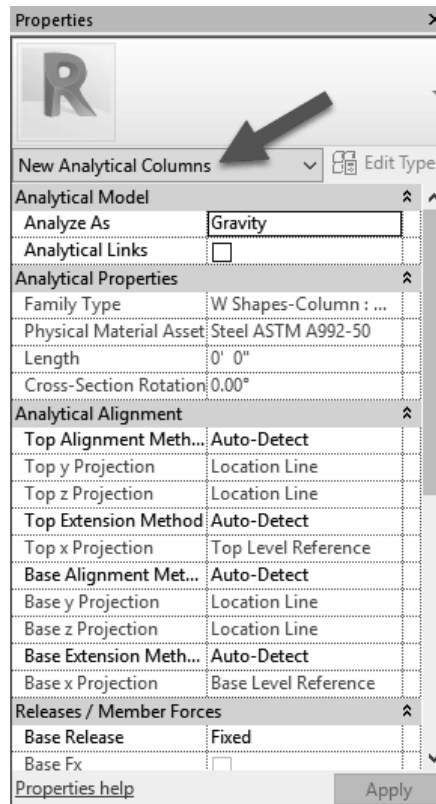
Although technically the same thing, a W12x36 beam family is not the same as a W12x36 column family. Both must be loaded into a project if that size is required for both beams and columns.

## Structural Column: Properties

Structural Columns have two sets of properties associated with them. The main properties are presented by default (Figure 4.1-5). The second set of properties is found by changing the Properties Filter to New Analytical Columns (Figure 4.1-6).



**Figure 4.1-5**  
Structural Column Properties



**Figure 4.1-6**  
Analytical Column Properties

When **Moves with Grids** is selected, the column will move when placed directly on a grid. This requires the column to have a valid **Column Location Mark** (an Instance Property after placement)—which requires two grids to intersect. If the grids are adjusted so they no longer intersect, the columns will stop moving with the grids.

### Structural Column: In-Canvas

While placing a Structural Column, press the **Space Bar** to rotate it before picking a placement point. Ensure the **View Range** is set properly so columns and beams appear in the view.

Structural plans typically have the Detail Level set to **Coarse**.

### Floor: Structural

Note: See Chapter 3 – Architecture Tab for detailed coverage of the Floor tool.

A structural floor is any floor, as determined by a structural engineer, which supports a load. A Structural floor is an Architectural floor with the *Structural* parameter checked; notice in *Object Styles* and *Visibility/Graphic Overrides* there is no Structural Floor category.

For a Floor, when the Structural parameter is checked, several additional structural parameters become available (Figure 4.1-7).

When a floor is supported by the ground, that is—a slab on grade, use a **Structural Foundation Slab** (see this tool later in this chapter). When the floor is being supported by other building elements, use a **Structural Floor**.

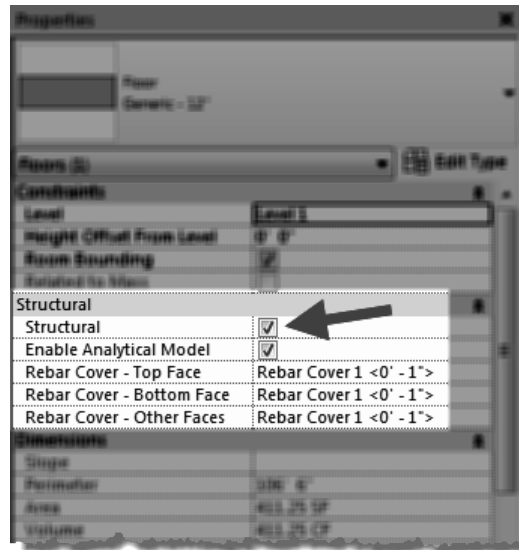


Figure 4.1-7 Structural floor properties

When using external structural analysis tools (e.g. Autodesk Robot or RISA Technologies) only Structural floors are exported and considered.

Most floors are structural floors. However, floors may be used architecturally to represent a floor finish; for example, a 1/8” thick floor positioned on top of the structural floor (which may be coming from a linked structural Revit model). This allows each room to have a separate finish apart from the main structural floor element (which would not be editable if contained within a link). **TIP:** These finish floors should be set to non-Room Bounding.

Because most floors are structural, all floors appear in a view, even when the view’s Discipline is set to Structural. Thus, a view Filter may need to be employed to hide any non-structural floors.

When using the Floor: Structural tool, Revit will automatically add a **Span Direction Symbol** to the current view. This can be deleted without loss of information. It may also be manually added to a view using the **Span Direction** tool on the Annotate tab.

### Floor: Architectural

Note: See Chapter 3 – Architecture Tab for detailed coverage of this tool.

### Floor: Slab Edge

Note: See Chapter 3 – Architecture Tab for detailed coverage of this tool.



## Truss

The Truss command is used to create a structural floor or roof truss in a building model. A Truss is a unique family which defines a repeating pattern of three fundamental components of a truss: **Top Chord**, **Web** and **Bottom Chord**. The structural shape associated with each of these components can be changed to any structural framing type loaded in the current project (Figure 4.1-8).

### Truss: Ribbon

The **Load Family** option provides a convenient way to bring in additional content without needing to cancel the current command and switch to the Insert tab.

Trusses can only be straight segments; thus, there are only two Draw options: **Line** and **Pick Lines**.

**Tag on Placement** allows the new truss to automatically be tagged in the current view.

quick steps

### Truss

1. Ribbon
  - Load Family
  - Line Segment or Pick
  - Tag on Placement
2. Options Bar
  - Placement Plane
  - Chain
3. Type Selector
  - Select Truss Type
4. Properties
  - Set truss Height
5. Type Properties
  - Edit all “Set Framing Type” values to desired framing member
6. In-Canvas
  - Pick two points to define length of truss
  - FYI: An error may result if points are too close, as the truss design may not work

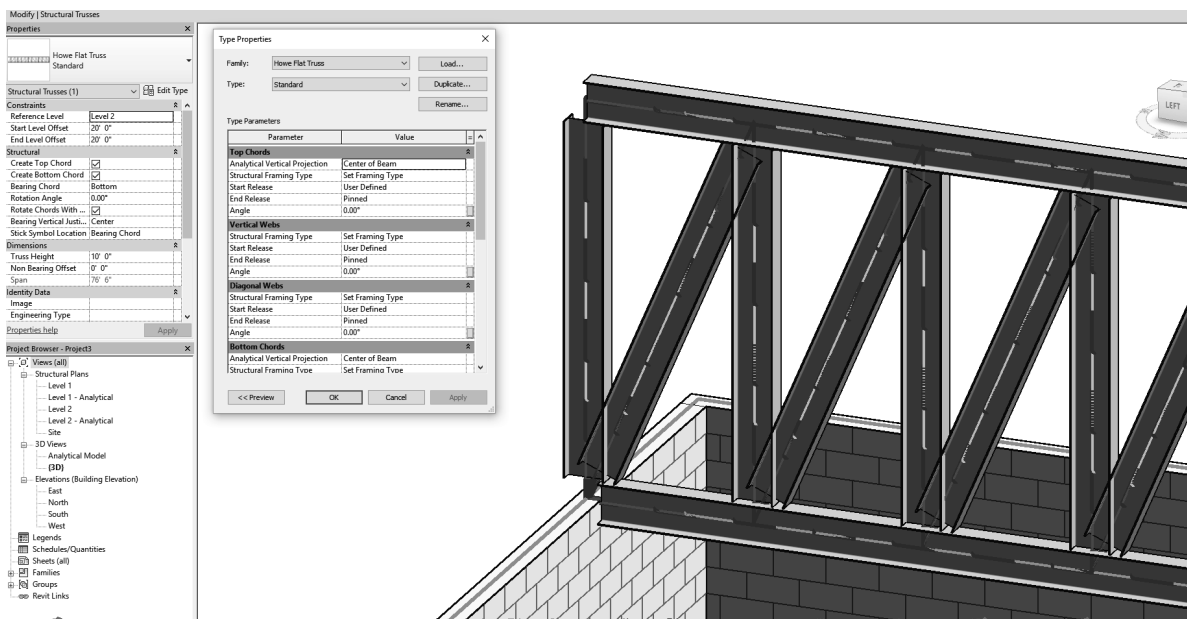
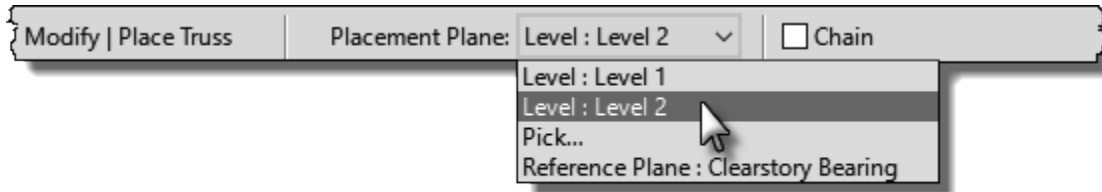


Figure 4.1-8 Structural truss and its properties

## Truss: Options Bar

The **Placement Plane** drop-down defines the vertical position of the truss. In a plan view, the default setting corresponds to the level associated with the current view. All Levels and named horizontal reference planes appear in this list. In a 3D view, this list also shows grid lines to help constrain the placement of trusses.



**Chain** is a common option in Revit which allows continuous sequential picks without the need to re-pick the previous point to define the start point of the next element.

## Truss: Type Selector

Available truss types, which have been previously loaded in the current project, are listed in the **Type Selector**. If a required truss type is not listed, use the **Load Family** command on the Ribbon—or from the Insert tab. Several truss families are installed with Revit (Figure 4.1-9).

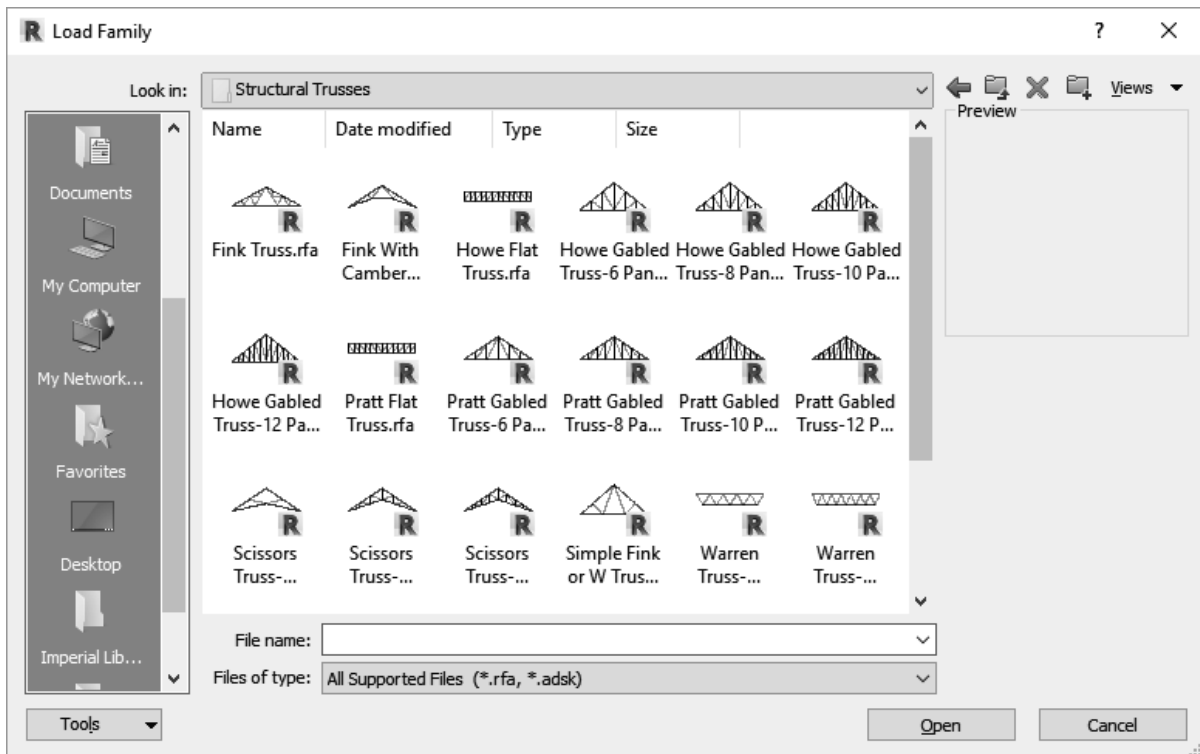


Figure 4.1-9 Structural truss families provided with Revit

**Truss: Properties**

In the Properties Palette (i.e., Instance Properties) set the **Bearing Chord**; options are Top and Bottom.

**Truss: Type Properties**

The Type Properties for a truss provide a means to change the structural shape and position of the Top Chord, Web and Bottom Chord components.

**Truss: In-Canvas**

Pick two points within the model to define the length of the truss. Picking points on a structural wall or column will create a parametric relationship and connect the structural analytical mode properly. Thus, if a wall or column is repositioned, the truss adjusts as well.

**Brace**

A Brace is a structural framing element, which has its Structural Usage set to Other, that slopes and connects to two other structural elements (columns and/or beams) as seen in Figure 4.1-10.

**Brace: Ribbon**

The **Load Family** option provides a convenient way to bring in additional content without needing to cancel the current command and switch to the Insert tab.

Braces can only be straight segments; thus, there is only one Draw option: **Line**.

**Tag on Placement** allows the new brace to automatically be tagged in the current view.

**Brace: Options Bar**

When in a plan view, the Options Bar provides a way to define the vertical position of the **Start** and **End** of the brace. 3D Snapping is the only option in a 3D view.

quick steps

**Brace**

1. Ribbon
  - Load Family
  - Tag on Placement
2. Options Bar (plan view)
  - Start Level/offset
  - End Level/offset
  - 3D Snapping
3. Type Selector
  - Select Bracing/Framing Type
4. Properties
  - Several under Geometric Position
5. In-Canvas
  - Pick two points to define bracing





**Brace: Type Selector**

Available brace types, any Structural Framing family loaded into the current project, are listed in the **Type Selector**. If a required truss type is not listed, use the **Load Family** command on the Ribbon—or from the Insert tab.

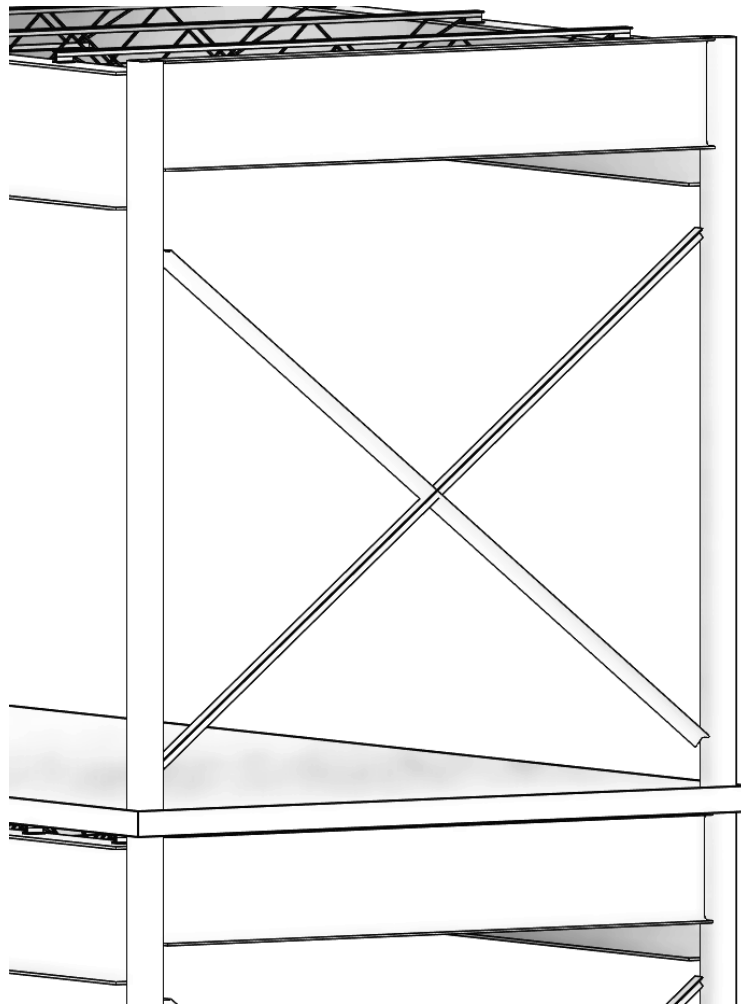
**Brace: Properties**

The Properties Pallet offers several settings in the Geometric Position section which control how the geometry appears within the model.

**Brace: In-Canvas**

In either a plan, elevation, section or 3D view, pick two points to define the location, length and angle of the desired bracing member.

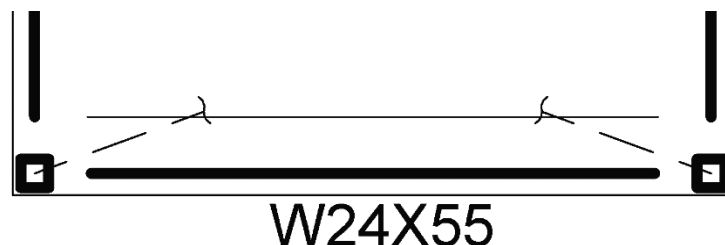
When in a 3D view, use the 3D Snapping option to force Revit to look for points along structural members.



**Figure 4.1-10** Structural (cross) bracing

Elevation and section views offer more visual controls to adjust the bracing once placed. For example, grips for the analytical connection point and grips for the cutback position of the actual geometry appear as well as a flip end (start vs. end) points icon.

Braces appear offset in plan views according to the Brace Symbols settings in Manage (tab) → Structural Settings → Symbolic Representation Settings (tab). **TIP:** Settings for this may need to be imported from the structural template using Transfer Project Standards.



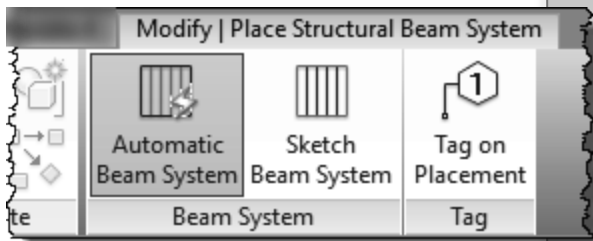
## Beam System

The Beam System command allows us to quickly place an expanse of joists in the model without requiring the individual use of the Beam command for each instance.

### Beam System: Ribbon

The Ribbon offers Automatic and Sketch options to define the perimeter of the area to receive an array of framing members.

The default option is **Automatic Beam System**. Use this when a series of beams define an enclosed area. Otherwise switch to the **Sketch** options and use the Draw options to manually define the perimeter. A special Draw option in Sketch mode is Pick Beams, which places a sketch line at the center of a beam or structural wall.



**Tag on Placement** allows the new brace to automatically be tagged in the current view.

### Beam System: Options Bar

While in Automatic mode, the Options Bar offers a convenient way to set Beam Type, Justification and Layout Rule for the joists about to be placed.

quick steps

## Beam System

### 1. Ribbon

- *Automatic*: If one or more enclosed beams (i.e., structural bay) are visible in the current view
  - Automatic Beam System
  - Sketch Beam System
  - Tag on Placement
- *Sketch*: If no enclosed beam areas are visible or don't exist
  - Boundary Line
  - Beam Direction
  - Line Segment
  - Or Pick Line
  - Or Pick Beam
  - Work Plane Settings
  - Reset System

### 2. Options Bar

- For *Automatic*
  - Beam Type
  - Justification
  - Layout Rule
  - 3D
  - Tag Style
- For *Sketch*
  - Chain
  - Offset
  - Radius

### 3. Type Selector

- Select Type

### 4. Properties

- 3D
- Elevation
- Layout Rule
- Spacing Value
- Justification
- Beam Type

If the top of the walls sloped (using Edit Profile on the wall, for example), and the bead system should follow that slope, then ensure **Walls Define Slope** is checked. This is for either orientation relative to the wall, parallel or perpendicular framing.



When switching to Sketch mode, the Options Bar changes to this:



While in Sketch mode, to change the beam system “pattern” edit the same parameters in the Properties palette.

### Beam System: Type Selector

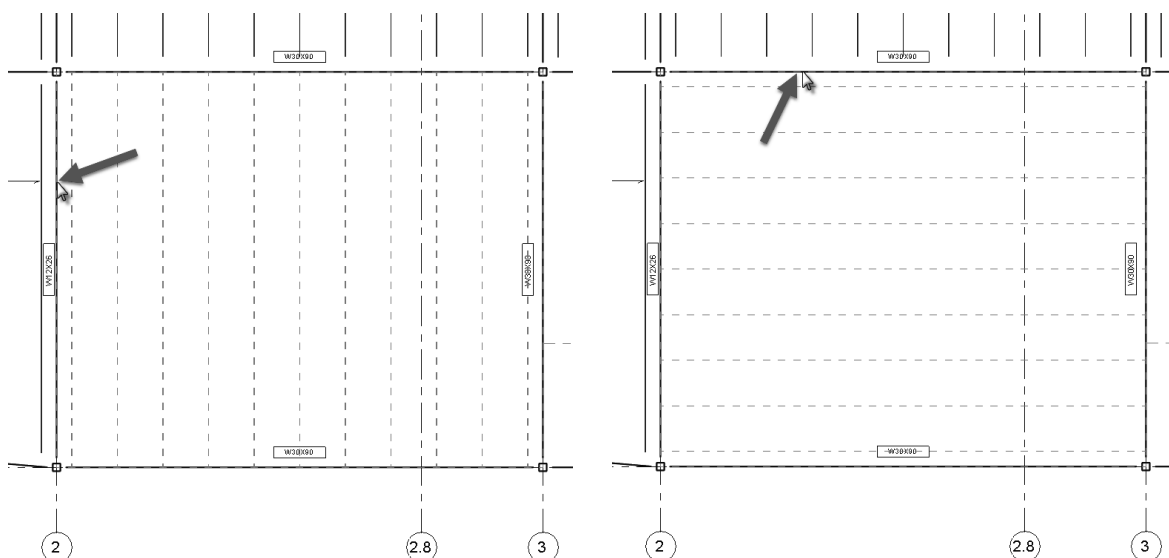
There is not much need for Types unless tracking some metadata (e.g. Cost) as all the parameters related to the geometry are instance parameters.

### Beam System: Properties

The Elevation parameter may be edited to ensure the bearing of the framing members aligns properly with the support elements.

### Beam System: In-Canvas

When hovering over a beam or structural wall, for the Automatic option, the direction and spacing of framing elements will appear (before clicking) as an aid. Thus, in this case, the Span Direction is implied as seen in the two examples below (Figure 4.1-11).



**Figure 4.1-11** Defining Structural Beam System direction; hover cursor over beam

Curved beams and structural walls, in plan, can be used to define the perimeter of a beam system (Figure 4.1-12). However, they cannot be the element selected as it cannot be used to infer the Span Direction of the framing in the Beam System.

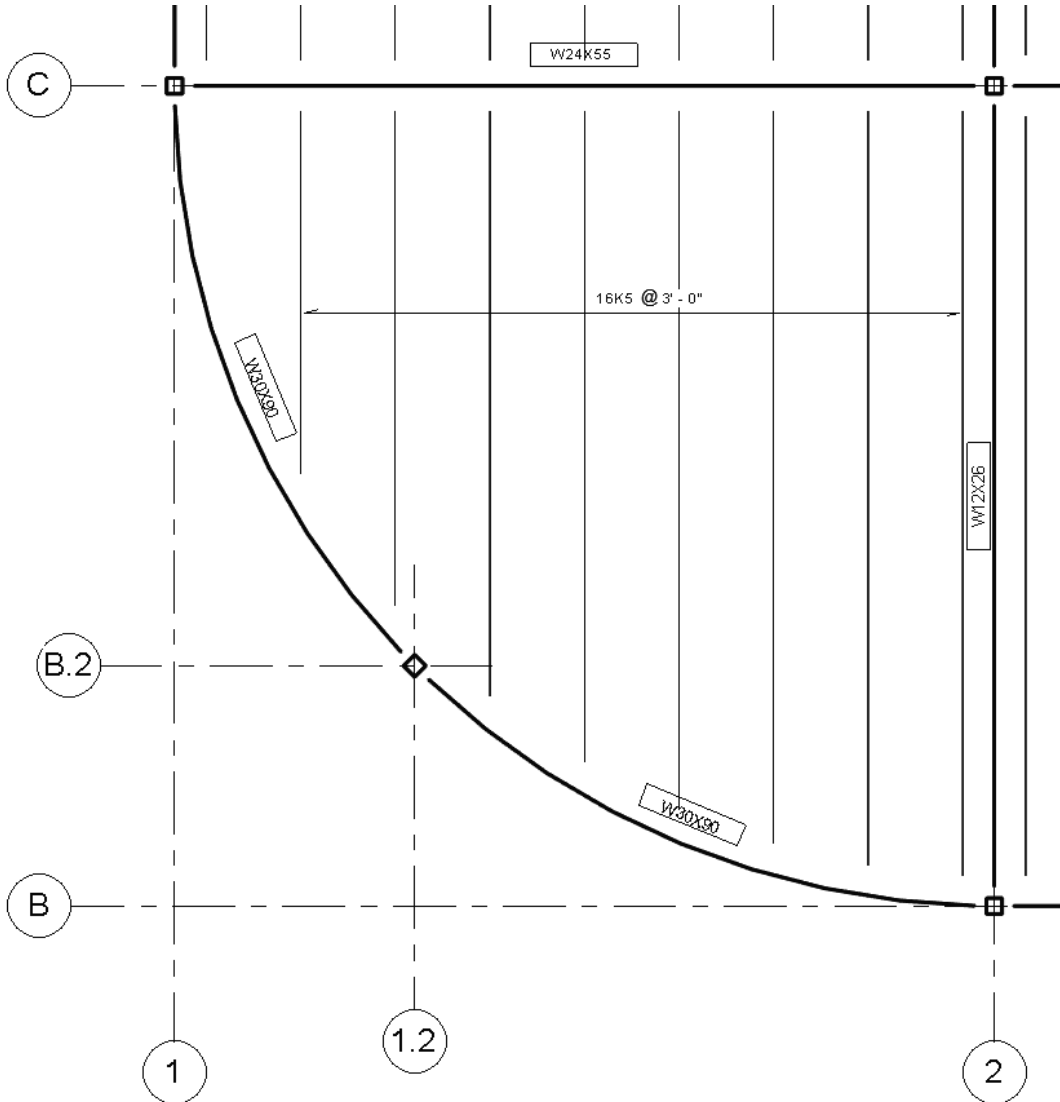
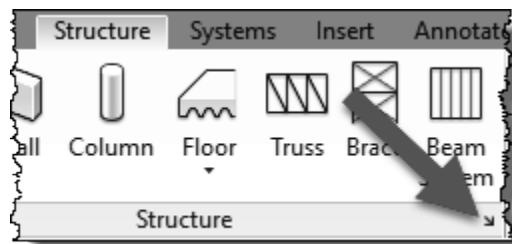


Figure 4.1-12 Structural Beam System with tag added

### Structural Settings

The icon in the lower right of the Structure panel provides quick access to the **Structural Settings** dialog.



## 4.2 Structure tab: Connection panel

Structural Connections offers a way to show geometry to represent connections and base plates; it also offers a means to share these important decisions with structural analysis and detailing software.

### Important Information About This Feature:

The Autodesk provided add-in **Steel Connections for Autodesk Revit 2021 64-Bit** must be installed to realize the full potential of the Structural Connections feature. Also, this feature only works with certified Revit structural families. This DOES NOT include the basic content in the Revit provided templates or the content in the main Column or Beam folders. The only steel content that works with this feature is located here:

- C:\ProgramData\Autodesk\RVT 2021\Libraries\US Imperial\Structural Framing\Steel\AISC 14.1
- C:\ProgramData\Autodesk\RVT 2021\Libraries\US Imperial\Structural Columns\Steel\AISC 14.1

### Connection

Without the add-in mentioned above, Revit only places an analytical connection with no 3D geometry being created.

#### Connection: Ribbon

The Ribbon only displays a grayed out **Modify Parameters** button. This is only available after the Connection is created.

#### Connection: Type Selector

The options listed here are dependent on the connections loaded into the current project from **the Structural Connection Settings** dialog—which is accessible via the small icon in the lower right corner of the Connection panel on the Ribbon. The list of *Available Connections* will be empty if the required add-in mentioned above is not installed.

quick steps

#### Connection

1. Ribbon
  - Modify Parameters
2. Type Selector
  - Select Type
3. Properties
  - Approval Status
4. In-Canvas
  - Select structural element(s); hold Ctrl if selecting more than one.
  - Press Enter to complete command.
  - Detail Level must be set to Fine to see structural connections.

Connection: **Properties**

The **Approval Status** allows the structural engineers to keep track of Connections they have reviewed and ones which still need work. The list of options is editable via the **Structural Connection Settings** dialog.

Connection: **In-Canvas**

With the Connections command active, select the necessary structural elements and then press Enter.

■ The **Detail Level** must be set to **Fine** to see the connection geometry in a view.

Once a connection is placed, the **Modify Parameters** button becomes active. Clicking it reveals a dialog specific to the connection type selected. This dialog has several categories to choose from on the left, with the remainder of the dialog showing a multitude of options for the selected category.

The image below shows the basic steps after activating the Connections command:

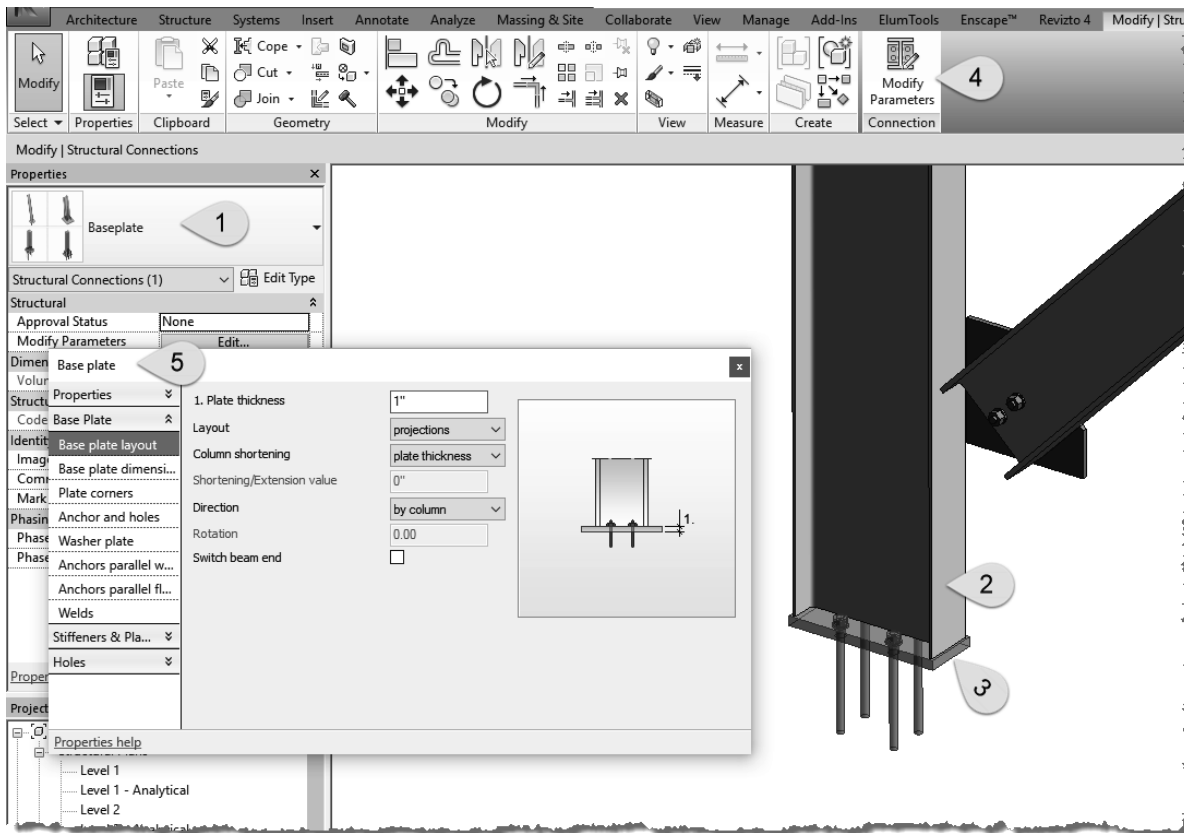
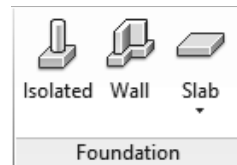


Figure 4.2-1 Structural Connections workflow

## 4.3 Structure tab: Foundation panel

Revit provides a **Foundation** tool (or, perhaps better described as a **Footing**) to model the building element which transfers the structural load from a wall or column to the earth. This element is often larger than the wall or column to help spread the load—this larger size is determined by a geotechnical engineer based on soil analysis at the project site.



### Isolated Foundation (i.e., Footing)

This command places a structural element intended to support a structural column. “Isolated” simply means it may have earth all around it and may not be in contact with any other foundations/footings. When associated with a column, the foundation automatically aligns with the bottom of the column and will maintain that relationship if modified in any way.

#### Isolated: Ribbon

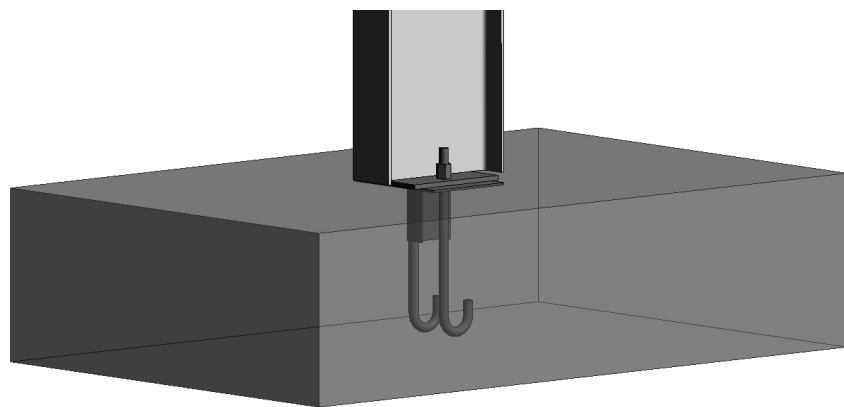
The **Load Family** option provides a convenient way to bring in additional content without needing to cancel the current command and switch to the Insert tab.

If the Isolated Footing is unique and there is no family loaded in the project, we can click the **Model In-place** command to quickly switch gears and create the desired geometry directly in the project.

quick steps

#### Isolated Foundation

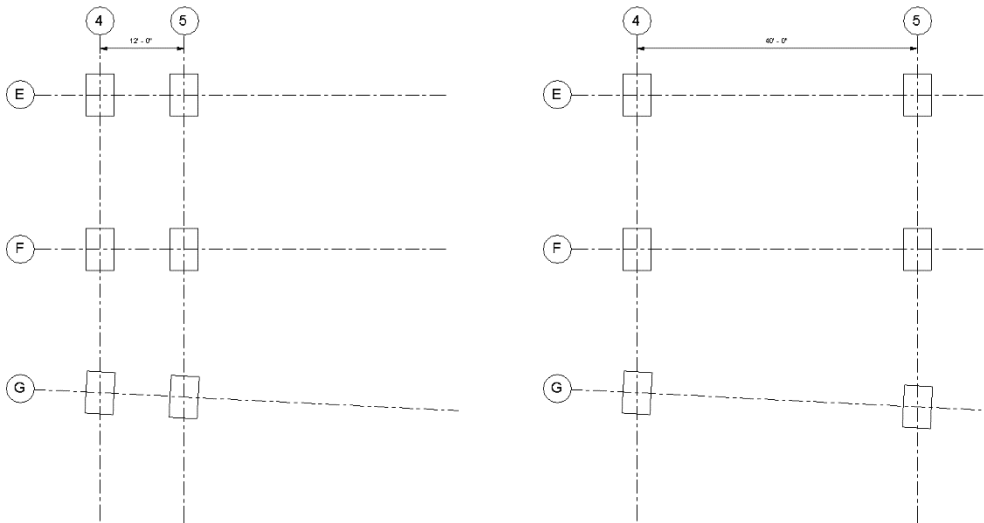
1. Ribbon
  - Multiple; at Grids
  - Multiple; at Columns
2. Options Bar
  - Rotate after Placement
  - Level (3D view only)
3. Type Selector
  - Select Type
4. Properties
  - Level/Offset
  - Structural Material
  - Enable Analytical Model
5. In-Canvas
  - Spacebar to rotate



**Figure 4.3-1** Isolated foundation added at structural column

Revit offers two options on the Ribbon to quickly place multiple Isolated Footings: **At Grids** and **At Columns**.

Using the **At Grids** option requires two or more Grids to be selected. A temporary representation of the Isolated Foundation appears. Clicking the **Green Checkmark** completes the task and creates the elements. Changes to the Grid locations causes the Isolated Foundations to update as seen in Figure 4.3-2; notice Grid 5 has been repositioned. The foundations also moved—even the one along the angled grid.



**Figure 4.3-2** Isolated foundations added at grid intersections update automatically

The **At Column** option is preferred in that the Isolated Foundation becomes associated with the element it actually supports. If the column moves, the Isolated Foundation updates accordingly. Of course, this option requires that columns exist first.

#### Isolated: Options Bar

When the **Rotate after Placement** is checked, Revit prompts for a rotation angle after clicking a position in the model to place the element. It is also possible to simply press the **Space Bar** to rotate the element in 90 degree increments, or relative to nearby angled elements.

While in a 3D view, the Options Bar also provides an option to select the **Level** to host the placed element.

#### Isolated: Type Selector

Available Isolated Foundation types, which have been previously loaded in the current project, are listed in the **Type Selector**. If a required size/shape is not listed, use the **Load Family** command.



**Isolated: Properties**

If the Isolated Foundation is not associated with the bottom of a column, the **Level** needs to be selected via the Properties Palette (i.e. Instance Properties). The only options for the Level parameter are Levels that exist in the project—named Reference Planes are not accessible here. If there is a lot of variation in elevation, for a sloped site as an example, use the **Height Offset from Level** parameter to avoid adding an excessive amount of Levels.

The **Structural Material** is used to specify which Revit material is assigned to the element. This determines how the element looks in the model and renderings as well as what the physical properties are when sent to a structural analysis program.

**Moves with Grids** only applies when an element is placed directly on a Grid—not necessarily at a Grid intersection.

When **Enable Analytical Model** is checked, Revit understands this element should be included in any structural analysis calculations. For existing elements in a remodel or addition, which is not being modified in any direct or in-direct way, then this option can be unchecked.

**Isolated: In-Canvas**

Switch to the plan view associated with the Level you need to associate the element with. If a view or level does not exist, switch to the closest level and then specify the **Level** or **Offset** via Properties.

Spacebar to rotate the element before placement.

When using one of the Multiple options, drag a window or use Ctrl to select multiple columns/grids.

## Wall Foundation (i.e., Footing)

A Wall Foundation attaches to the bottom of a wall, structural or non-structural. If the wall is adjusted or moved, the element is updated accordingly.

This command is dependent on walls already existing in the model. Also, if the host wall is deleted, the wall foundation is also deleted—just like doors and windows in the same wall.

Wall foundations join, and clean up, with Isolated Foundations as seen in Figure 4.3-3.

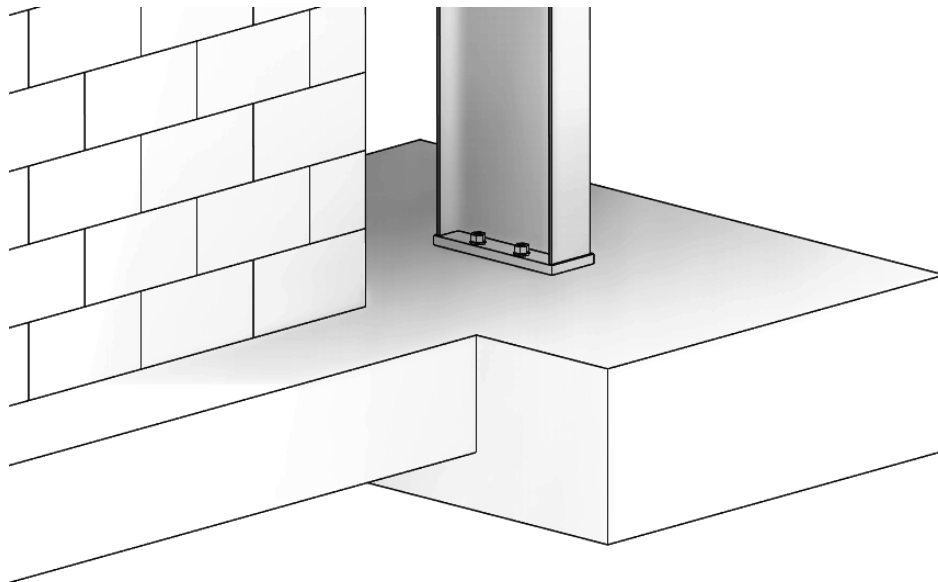
### Wall Foundation: Ribbon

The Ribbon offers a **Select Multiple** option so several walls may be selected at once, rather than clicking on each one separately. After selecting multiple walls, click the **Finish** option—the Green Checkmark.

quick steps

### Wall Foundation

1. Ribbon
  - Select Multiple
2. Type Selector
  - Select Type
3. Properties
  - Eccentricity
  - Enable Analytical Model
4. Type Properties
  - Structural Material
  - Structural Usage
    - Bearing
    - Retaining
  - Dimensions
    - Options vary depending on Structural Usage selection
5. In-Canvas
  - Select a wall—continuous footing added to its bottom



**Figure 4.3-3** Wall foundation joined to isolated foundation

### Wall Foundation: Type Selector

Available Wall Foundation types, which have been previously defined in the current project, are listed in the **Type Selector**. If a required size is not listed, use the **Edit Type → Duplicate** option. A Wall Foundation is a system family, meaning it can only exist within the context of a project, like walls. Thus, there are no families (rfa files) to be loaded.

### Wall Foundation: Properties

By default, the Wall Foundation is centered on the overall wall thickness. Use the **Eccentricity** parameter to reposition the Wall Foundation relative to the center of the wall; both positive and negative numbers are allowed.

When **Enable Analytical Model** is checked, Revit understands this element should be included in any structural analysis calculations. For existing elements in a remodel or addition, which is not being modified in any direct or indirect way, this option can be unchecked.

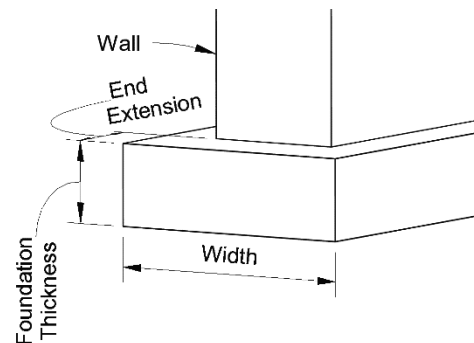
### Wall Foundation: Type Properties

The **Structural Material** is used to specify which Revit material is assigned to the element. This determines how the element looks in the model and renderings as well as what the physical properties are when sent to a structural analysis program.

Changing the **Structural Usage** option affects which dimensions appear as described below. The two options are **Bearing** and **Retaining**.

When the Structural Usage is set to Bearing, the Dimension options are (Fig. 4.3-4):

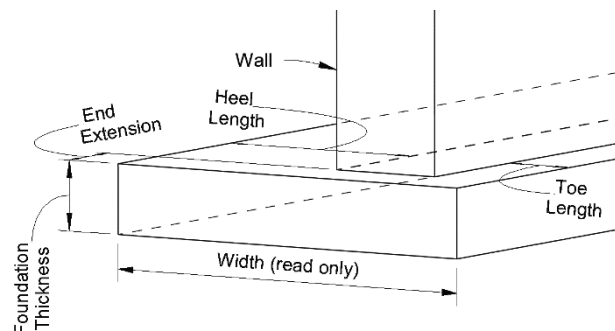
- Width
- Foundation Thickness
- Default End Extension Length



**Figure 4.3-4**  
Wall foundation (bearing) dimensions

When the Structural Usage is set to Retaining, the Dimension options are (Fig. 4.3-5):

- Width (read only - instance)
- Toe Length
- Heel Length
- Foundation Thickness
- Default End Extension Length



**Figure 4.3-5**  
Wall foundation (retaining) dimensions

Figure 4.3-6 shows a section with a “bearing” wall foundation on the left and a

“retaining” example on the right. Notice, wall foundations are aligned from the top.

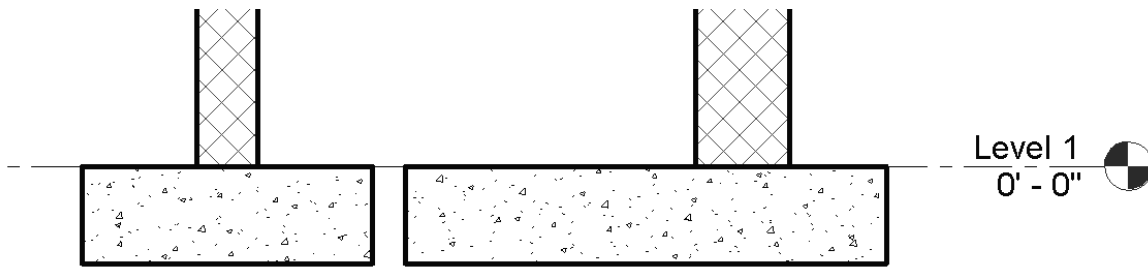


Figure 4.3-6 Wall foundations; Bearing (left) and Retaining (right)

### Wall Foundation: In-Canvas

With the Wall Foundation command active, simply select individual walls, or use the Select Multiple option to select several at once.

Once created, in a section view, use the Cut Profile command on the View tab to add a keyway as shown in the image below (Figure 4.3-7). Keep in mind this is a view specific override and does not change the 3D geometry.

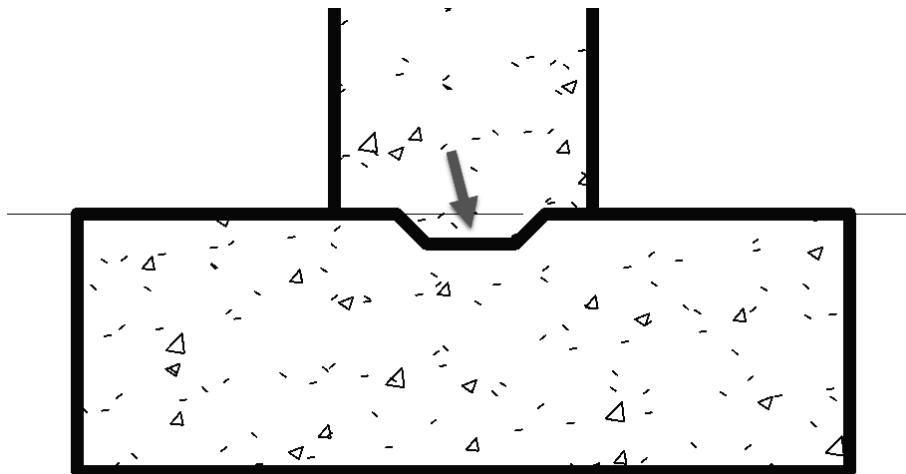


Figure 4.3-7 Cut Profile applied to Wall and Wall Foundation

## Structural Foundations: Slab

The Structural Foundation Slab is primarily meant to model a slab on grade. This tool is exactly like the Floor and Structural Floor commands but with the added convenience of being sorted into a separate category, Wall Foundations.

See Walls and Structural Walls for more information.

### Slab Foundation: Ribbon

When sketching a slab, there are three “pick” options: **Pick Lines**, **Pick Walls** and **Pick Supports**. The Pick Supports option can be walls or beams.

### Slab Foundation: Options Bar

When Draw is set to Pick Walls or Supports, the Extend into wall (to core) option appears. When this is checked, the slab extends to the edge of the layers, within the wall, defined as the Core, or structural, part of the wall.

### Slab Foundation: Type Selector

Available Foundation Slab types, which have been previously defined in the current project, are listed in the **Type Selector**. If a required size is not listed, use the **Edit Type** → **Duplicate** and then **Edit Structure**. A Foundation Slab is a system family, meaning it can only exist within the context of a project, similar to walls. Thus, there are no families (rfa files) to be loaded.

### Slab Foundation: In-Canvas

Sketch the perimeter of the slab—the sketch cannot have gaps or crossing lines. Any closed loops within the outer perimeter become holes in the slab.

quick steps

#### Slab Foundation

1. Ribbon
  - Boundary Line
  - Slope Arrow
  - Span Direction
  - Draw (boundary options)
    - Line Segment
    - Pick a Line
    - Pick a Wall
    - Pick a Beam
  - Work Plane Options
2. Options Bar (varies based on Draw panel selection)
  - Chain
  - Offset
  - Radius
  - Extend into wall (to core)
3. Type Selector
  - Select Slab Type
4. Properties
  - Level/Offset
  - Enable Analytical Model
5. In-Canvas
  - Define perimeter of slab

### Floor: Slab Edge

Note: See Chapter 3 – Architecture Tab for detailed coverage of this tool.

## 4.4 Structural tab: Reinforcement

These tools are not covered due to the architectural focus of this book.

## 4.5 Remaining Structural tab Panels

See Chapter 3 – Architectural tab for detailed coverage of the remaining tools on the structural tab. These tools are useful to both the architectural and structural discipline and are therefore provided on their respective tabs for convenience.

## Steel & Precast tabs

The Steel and Precast tabs, as shown below, has several advanced structural tools which will not be covered in this book. Refer to Revit’s **Help System** for more information on these commands and workflows.

