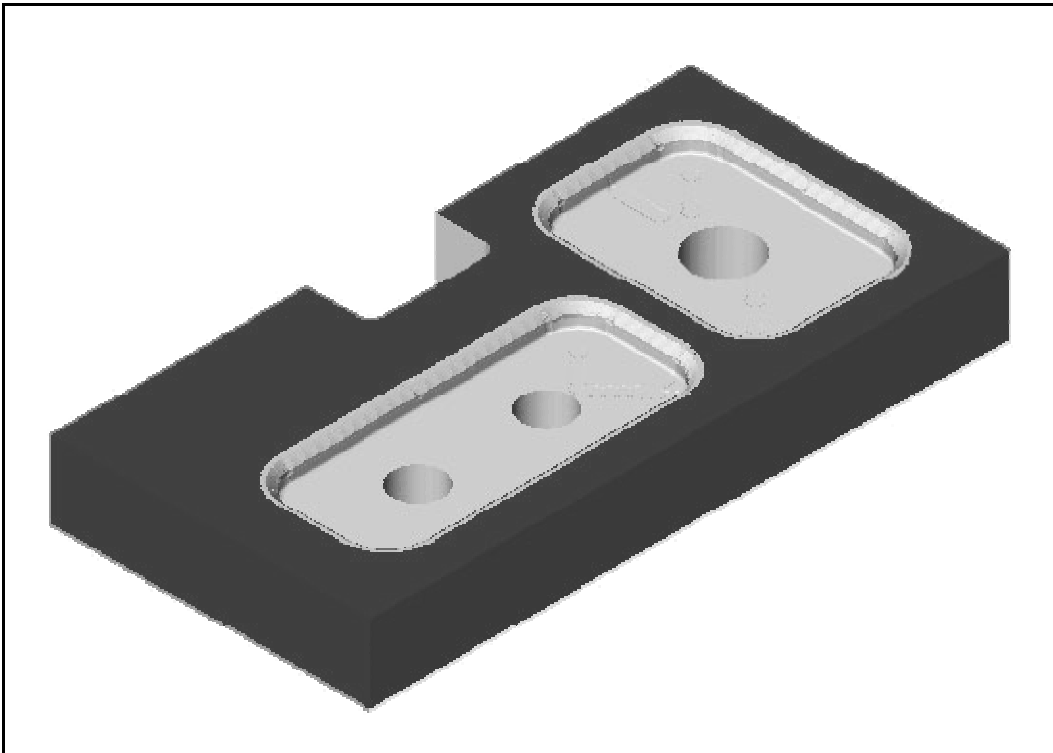


GibbsCAM Tutorial

Version 2005



JEFF HATLEY

SDC
PUBLICATIONS

Schroff Development Corporation

www.schroff.com
www.schroff-europe.com

TABLE OF CONTENTS

Chapter 1 – Getting Started in GibbsCAM		
1	Exercise 1	The GibbsCAM interface
Chapter 2 – Creating Geometry		
15	Exercise 1	Creating Simple Shapes and Deleting Geometry
23	Exercise 2	Creating Points for a Hole Pattern
28	Exercise 3	Connectors
42	Exercise 4	Geometry Expert
61	Exercise 5	Editing Geometry with Geometry Expert
66	Exercise 6	CAD
81	Exercise 7	Workgroups
98	Exercise 8	Text
105	Exercise 9	Dimensions
Chapter 3 – Importing CAD Geometry		
111	Exercise 1	Opening AutoCAD .dwg Files
115	Exercise 2	Extracting Geometry from a 3D CAD Model
Chapter 4 – Mill		
125	Exercise 1	Drilling
144	Exercise 2	Hole Wizard
154	Exercise 3	Hole Manager
164	Exercise 4	Roughing and Contours
185	Exercise 5	Machining a 3D CAD Solid Model
188	Exercise 6	Editing Machining Operations
Chapter 5 – Lathe		
191	Exercise 1	Lathe
211	Appendix A	Post Processing
212	Appendix B	Tool List Summaries
213	Appendix C	Operation Summaries

Notes:

Part files for the exercises can be downloaded from www.schroff1.com.

After downloading a file, click the right mouse button on the file and select *Properties*. Uncheck the *Read Only* box.

NOTES: