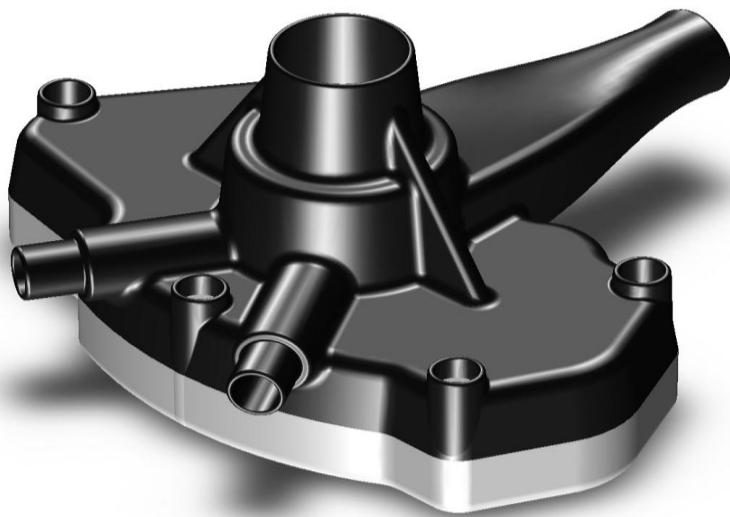


# SolidWorks 2010

## Part II - Advanced Techniques



### Advanced Level Tutorials

Parts, Surfaces, SimulationXpress, Sheet Metal,  
Top-Down Assemblies, Core & Cavity Molds

Paul Tran, CSWP, CSWI  
Sr. Certified SolidWorks Instructor

**SDC**  
PUBLICATIONS

Schroff Development Corporation  
[www.schroff.com](http://www.schroff.com)

---

Better Textbooks. Lower Prices.

**FREE SolidWorks 2010**  
QuickGuide - Icon Description  
**FREE CSWP**  
Preparation Material  
For The CSWP Core Exam

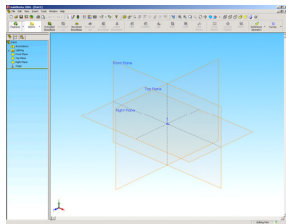



# Table of Contents

---

Copyrights Notices  
Disclaimer  
Trademarks

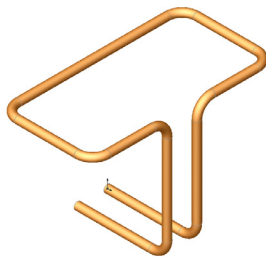
## Introduction:



SolidWorks 2010 User Interface	X
The 3 references planes	XI
The toolbars	XI
The system feedback symbols	XIII
The status bar	XIV
2D sketch examples	XV
3D feature examples	XVI

## Advanced Modeling Topics

### Chapter 1:



<b>3D Sketch</b>	<b>1-1</b>
Tools needed	1-2
Adding 3D lines	1-3
Using the reference axis indicator	1-4
Using the tab key	1-4
Adding dimensions	1-5
Adding the sketch fillets	1-6
Creating the Sweep profile	1-7
Making the swept feature	1-8
Questions for review	1-9
Exercise: Sweep with 3D Sketch	1-10
Exercise: 3D Sketch & Planes	1-11
Exercise: 3D Sketch & Composite Curves	1-17

### Chapter 2:

<b>Planes Creation</b>	<b>2-1</b>
Tools needed	2-2
Sketching the base profile	2-3
Creating the flat surface	2-4
Creating a plane at angle	2-5
Showing a sketch	2-6

## Table of Contents



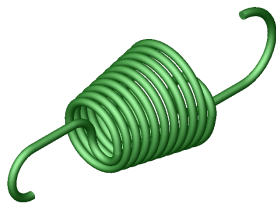
Creating a plane through lines/points	2-7
Creating a plane parallel at points	2-8
Creating a plane offset distance	2-10
Creating Plane Normal to curve	2-12
Creating a circular patterns	2-13
Filleting the edges	2-16
Questions for review	2-17
Exercise: Create new work planes	2-18

### Chapter 3:



<b>Advanced Modeling – 5/8” Spanner</b>	<b>3-1</b>
Tools needed	3-2
Creating the open-end	3-3
Using min / max Arc conditions	3-4
Creating the transition body	3-4
Constructing a new work plane	3-6
Creating the close end	3-7
Making a hexagon cut	3-8
Adding a recess feature	3-9
Mirroring the recess	3-10
Adding fillets	3-11
Adding text on the recess	3-13
Extruding the text	3-14
Questions for review	3-17

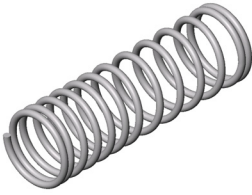
### Chapter 4:



<b>Sweep w/ Composite Curve – Helical Extension Spring</b>	<b>4-1</b>
Tools needed	4-2
Creating the Sweep path	4-3
Defining the Helix	4-3
Adding other Hook features	4-5
Creating a new plane	4-6
Combining sketches using Composite Curve	4-8
Creating Sweep profile	4-9
Creating the Base Sweep	4-9
Other spring examples	4-10
Questions for review	4-11
Exercise: Circular Spring – Expanded	4-12

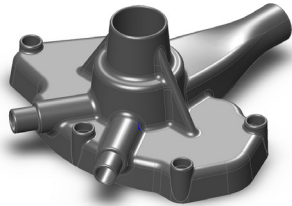
<b>Sweep – Multi-Pitch Spring, closed ends</b>	<b>4-15</b>
Tools needed	4-16
Creating new work planes	4-17
Making the first helix	4-17
Making the second helix	4-18
Making the third helix	4-19

## Table of Contents



Making the fourth helix	4-20
Combining the helices	4-21
Creating the sweep profile	4-23
Sweeping profile along path	4-24
Questions for review	4-25
Exercise: Projected Curve & Composite Curve	4-26

### Chapter 5:



<b>Advanced Modeling – Sweep vs. Loft – Water Pump</b>	<b>5-1</b>
Tools needed	5-2
Understanding the draft options	5-3
Creating the base	5-4
Creating the upper inlet port - revolve	5-5
Adding constant fillets	5-6
Creating the new work planes	5-7
Creating the outlet port - Loft	5-10
Adding the mounting bosses	5-11
Creating the rear inlet port	5-12
Adding face Fillets	5-13
Mirroring features	5-15
Shelling the part	5-16
Adding the ribs	5-17
Mirroring the ribs	5-18
Removing the sharp edges	5-19

### Chapter 6:

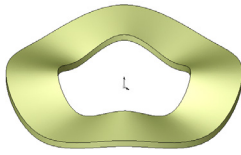


<b>Lofts – Water Meter Housing</b>	<b>6-1</b>
Tools needed	6-2
Constructing the body	6-3
Creating an offset distance plane	6-5
Creating loft profiles / features	6-5
Constructing the Inlet / outlet profiles	6-6
Using split entities	6-7
Re-using the previous sketch	6-8
Creating the solid loft feature	6-11
Using the shell command	6-13
Adding the left / right brackets	6-14
Adding the seal ring	6-15
Adding chamfers	6-18
Questions for review	6-19
Exercise: Loft	6-20

### Chapter 7:

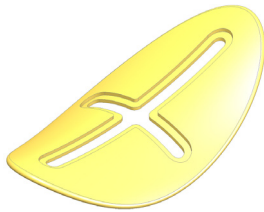
<b>Loft with Guide Curves – Waved Washer</b>	<b>7-1</b>
Tools needed	7-2
Adding the construction geometries	7-3

## Table of Contents

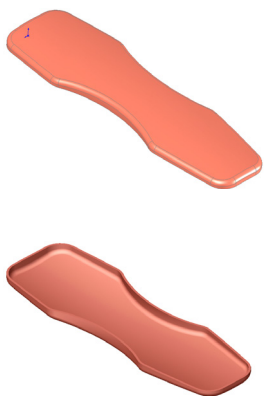


Creating a offset distance plane	7-4
Creating a derived sketches	7-5
Creating a curve through reference points	7-5
Constructing the loft sections	7-7
Creating the derived sketches	7-7
Creating the loft feature	7-10
Showing / hiding sketches	7-11
Questions for review	7-12

### Chapter 8:

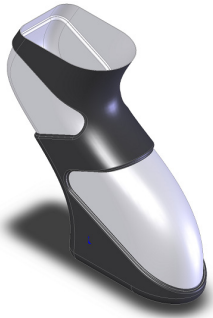
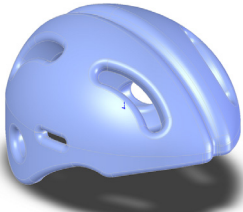
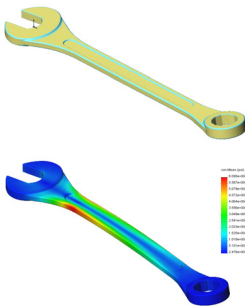


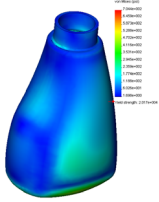
<b>Surfaces – Lofted Surface</b>	<b>8-1</b>
Tools needed	8-2
Creating offset distance plane	8-3
Constructing the loft profiles	8-3
Creating the loft surface	8-6
Splitting surfaces	8-7
Deleting surfaces	8-8
Thickening surfaces	8-9
Calculating the angle between faces	8-11
Adding a full round fillet	8-12
Sketching / extruding the slot contours	8-14
Questions for review	8-17



<b>Lofted Surface – Remote Control Casing</b>	<b>8-19</b>
Tools needed	8-20
Creating offset distance planes	8-21
Sketching the loft sections	8-22
Recognizing the order of the loft selection	8-23
Creating the loft surface	8-24
Adding revolved surface	8-25
Copying / moving surfaces	8-26
Trimming surfaces	8-27
Hiding surfaces	8-27
Filling surfaces	8-28
Knitting surfaces	8-32
Adding fillets	8-32
Thickening surfaces	8-34
Splitting the model	8-35
Creating the lower half	8-36
Creating the upper half	8-37
Using the flip side to cut option	8-38
Questions for review	8-39
Exercise: Lofted Surface	8-40

## Table of Contents

<b>Chapter 9:</b>	<b>Advanced Surfaces – Surface Offset / Ruled</b>	<b>9-1</b>
	Tools needed	9-2
	Using offset and ruled surface	9-3
	Creating the base loft	9-4
	Using the splitting lines	9-5
	Using offset surfaces	9-6
	Using ruled surface	9-7
	Using knit surfaces	9-8
	Creating a cut with surface	9-10
	Exercise: Advanced modeling with surfaces	9-13
	Exercise: Advanced surfacing techniques	9-15
<b>Chapter 10:</b>	<b>Surfaces vs. Solid Modeling -- Helmet</b>	<b>10-1</b>
	Tools needed	11-2
	Constructing the body of Helmet	11-3
	Sketching the sweep profile	11-4
	Sketching the sweep path	11-5
	Knitting the surfaces bodies	11-6
	Thickening the surface – Knit	11-7
	Creating a revolve cut feature	11-9
	Creating the Cut-out slot with draft	11-10
	Adding fillets	11-13
	Exercise: Turbine Blades	11-15
Exercise: Advanced Sweep – Candle Holder	11-16	
	<b>L3 – Final Exam</b>	<b>11-23</b>
<b>Chapter 11:</b>	<b>SimulationXpress – 5/8” Spanner</b>	<b>12-1</b>
	Tools needed	12-2
	Starting SimulationXpress	12-3
	Setting up units	12-3
	Adding a fixture	12-3
	Adding load	12-6
	Selecting material	12-7
	Analyzing the model	12-8
	Reading the Results	12-9
	Stress distribution	12-9
	Displacement distribution	12-10
	Factor of Safety (FOS)	12-10
	HTML report	K11
	eDrawings	12-15
	Questions for review	12-19
	Exercise: Apply load	12-20

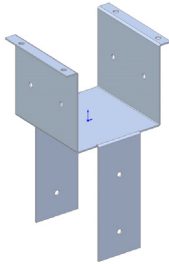


Exercise: Apply pressure

12-21

## Sheet Metal Topics

### Chapter 12:



#### Sheet Metal – Post Cap

13-1

Tools needed

13-2

Making the base sketch

13-3

Using the base Flange

13-3

Creating an edge Flange

13-4

Editing an edge Flange

13-5

Creating a sketch Bend

13-7

Adding holes in sheet metal parts

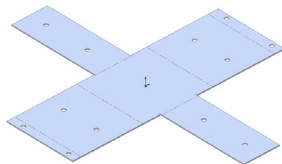
13-11

Flattening a pattern

13-13

Questions for review

13-14



#### Sheet Metal - Vents

13-15

Tools needed

13-16

Creating the base sketch

13-17

Extruding with base-flange

13-18

Using the miter flange options

13-19

Creating a flat patterns

13-21

Creating a forming tool

13-22

    Revolve the form body

13-25

    The position sketch

13-27

    Save the forming tools

13-28

Applying the forming tools onto sheet metal part

13-30

    Positioning the forming tool

13-31

Adding other sheet metal features

13-33

Creating a linear pattern of the forming tools

13-34

Creating an axis

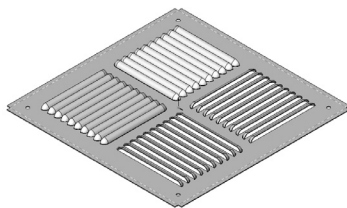
13-35

Creating Circular patterns

13-35

Questions for review

13-37



### Chapter 13:

#### Forming Tools – Button w/Slots

14-1

Tools needed

14-2

Sketching the base

14-3

Revolving the base

14-4

Adding slots

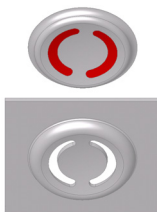
14-5

Adding split lines

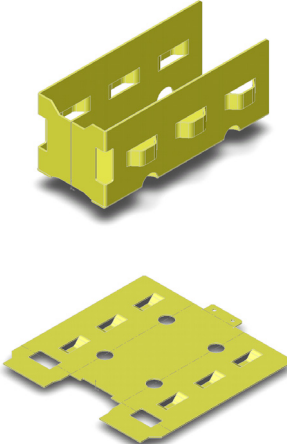
14-7

Defining the stopping & removing faces

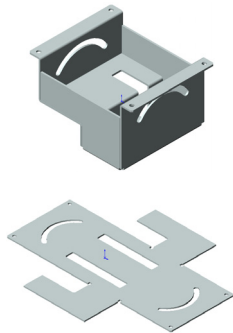
14-9



## Table of Contents

	Saving in the design library	14-10
	Questions for review	14-12
	<b>Sheet Metal – Mounting Tray</b>	<b>14-31</b>
	Tools needed	14-14
	Making the base flange	14-15
	Adding an edge flange	14-16
	Adding sheet metal cuts	14-17
	Unfolding a sheet metal part	14-18
	Folding the sheet metal part	14-20
	Accessing the design library	14-23
	Adding the bridge lance	14-24
	Creating a linear pattern	14-26
	Mirroring body	14-27
	Sheet metal chamfers	14-30
Creating a flat pattern	14-31	
	Questions for review	14-32

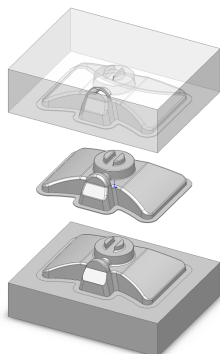
### Chapter 14:



	<b>Sheet Metal Conversions</b>	<b>15-1</b>
	Tools needed	15-2
	Importing an IGES file	15-3
	Using the rip command	15-4
	Applying sheet metal parameters	15-5
	Adding fillets	15-6
	Crating a flat pattern	15-7
	Questions for review	15-8
	Exercise: Using STEP file & Smart Fasteners	15-9

## Top-Down Assembly Topics

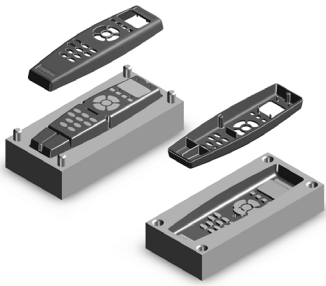
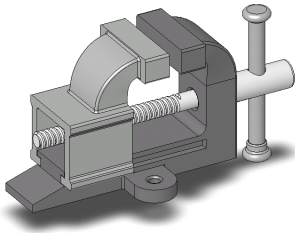
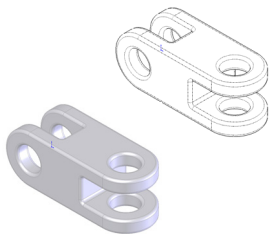
### Chapter 15:



	<b>Top-Down Assembly – Core &amp; Cavity – Assembly Level</b>	<b>16-1</b>
	Tools needed	16-2
	Opening the existing part	16-3
	Applying scale to parts	16-3
	Creating Radiate surfaces	16-4
	Adding parts into an assembly document	16-5
	Creating the core part	16-6
	Knitting the surfaces	16-7
	Hiding component	16-8
	Extruding with up to surface	16-9
	Editing part vs. edit assembly modes	16-10



## Table of Contents

	Creating the cavity part	16-11
	Creating an assembly exploded views	16-17
	Animating the explode / collapse configurations	16-20
	Questions for review	16-22
	<b>Tooling Design – Part Level</b>	<b>16-23</b>
	Tools needed	16-24
	Opening the IGES file	16-25
	Adding a Parting Lines	16-26
	Using the shut off Surfaces command	16-27
	Using Parting Surfaces	16-28
	Using Tooling Splits	16-30
	Saving the 2 halves	16-32
	Separating the 2 halves	16-33
	Questions for review	16-35
		
<b>Chapter 16:</b>	<b>Top-Down Assembly – Miniature Vise</b>	<b>16-1</b>
	Tools needed	16-2
	Adding side flanges	16-5
	Offsetting distance plane	16-7
	Creating loft profiles and guide curves	16-8
	Creating a loft with guide curves	16-11
	Inserting the base part into an assembly	16-15
	Understanding the inplace mates	16-15
	Offsetting existing geometry	16-16
	Creating a loft with guide cure	16-20
	Using loft with guide curve in an assembly	16-22
	Extruding with up to surface option	16-25
	Creating Internal threads	16-27
	Making an assembly section view	16-30
	Adding sub-components	16-31
	Questions for review	16-33
	Exercise: Lips & Grooves for Plastic Parts	16-35
	Exercise: Mounting Bosses for Plastic Parts	16-39
		
<b>Chapter 17:</b>	<b>External References &amp; Repair Errors – Double Link</b>	<b>17-1</b>
	Tools needed	17-2
	Breaking all external references	17-3
	Understanding External Reference symbols	17-4
	Repairing Sketch level	17-5
	Repairing / replacing relations and dimensions	17-6
	Questions for review	17-7
	Exercise: Repair Errors	17-9
		

## Table of Contents

<b>Level 4 Final Exam</b>	<b>17-17</b>
---------------------------	--------------

### **CSWP Core Preparation Practice**

Preparation materials for the CSWP-Core examination	<b>18-1</b>
Challenge 1: Part modeling and modifications	18-2
Challenge 2: Configurations and design tables	18-20
Challenge 3: Bottom up assembly	18-26

### **Student Testimonials:**

Some of the actual student testimonials after completing the training courses from the Author. All documents are filed at local SolidWorks resellers.

### **SolidWorks 2010 Quick-Guides:**

Quick Reference Guide to SolidWorks 2010 Command Icons and Toolbars.

