

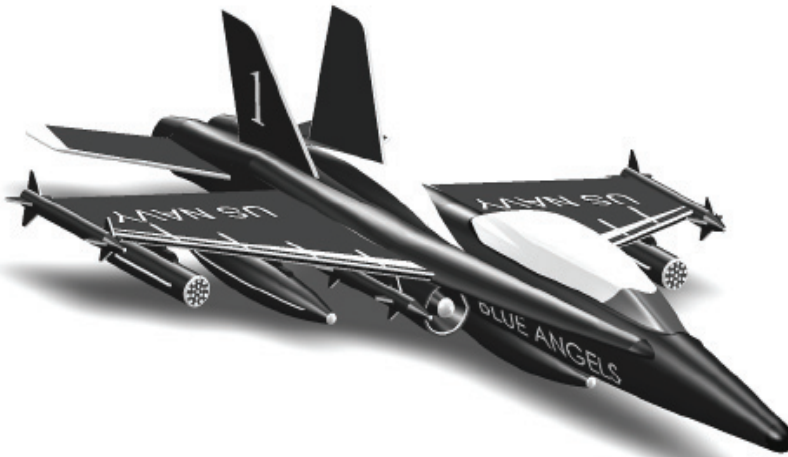
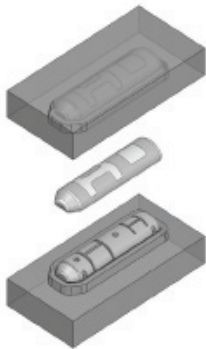
Inside:

SUPPLEMENTAL
FILES ON CD



SolidWorks 2011

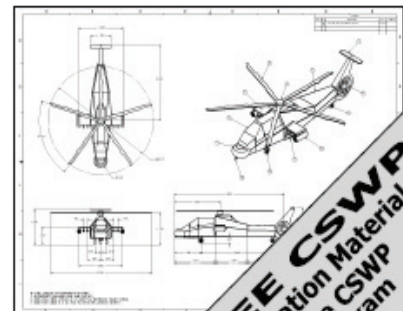
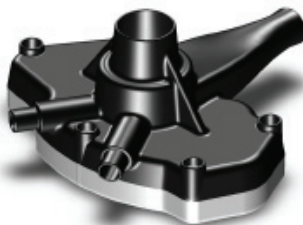
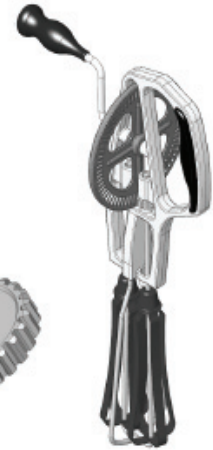
Part I - Basic Tools



Introductory Level Tutorials

Parts, Assemblies and Drawings

Written by: Sr. Certified SolidWorks Instructor
Paul Tran, CSWP, CSWI



SDC
PUBLICATIONS

www.SDCpublications.com

Schroff Development Corporation

FREE CSWP
Preparation Material
For The CSWP
Core Exam

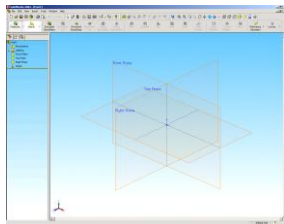


Table of Contents

Table of Contents

Copyrights Notices
Disclaimer
Trademarks

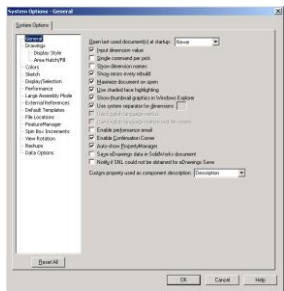
Introduction:



SolidWorks 2011 User Interface	XIII
The 3 references planes	XIX
The toolbars	XX
The system feedback symbols	XXI
The status bar	XXII
2D sketch examples	XXIII
3D feature examples	XXIV

Setting the System Parameters

Chapter 1:



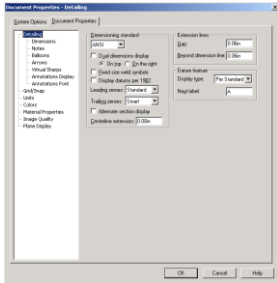
The system settings	1-1
The system options	1-1
The general options	1-2
The drawings options	1-2
The display type options	1-3
The area hatch options	1-3
The colors options	1-4
The sketch options	1-4
The relations / snaps options	1-5
The display / selection options	1-5
The performance options	1-6
The large assembly mode options	1-6
The external references options	1-7
The default templates options	1-7
The file location options	1-8
The feature manager options	1-8
The spin box increment options	1-9
The view rotation options	1-9
The backups / recover options	1-10
The hole wizards / toolbox options	1-10

Table of Contents

The file explorer options	1-11
The search options	1-11
The collaboration / advanced option	1-12
Questions for review	1-13

Chapter 2:

Document Templates	2-1
Document properties	2-1
The drafting standard options	2-2
The annotations options	2-2
The dimensions options	2-3
The virtual sharp options	2-3
The tables options	2-4
The bill of materials options	2-4
The detailing options	2-5
The grid / snap options	2-5
The units options	2-6
The colors options	2-6
The material properties options	2-7
The image quality	2-7
The plane display options	2-8
The dimXpert options	2-8
The size dimension options	2-9
The location dimension	2-9
The chain dimension options	2-10
The geometric tolerance	2-10
The chamfer controls options	2-11
The display options	2-11
Saving the document template settings	2-12
Questions for review	2-13



Basic Modeling Topics

Chapter 3:

Basic Solid Modeling – Extrude Options	3-1
Tools needed	3-2
Starting a new part	3-3
Changing the background color	3-4
Starting a new sketch	3-5
Sketching the first profile	3-6
Adding geometric relation or constraints	3-7
Adding dimensions	3-9

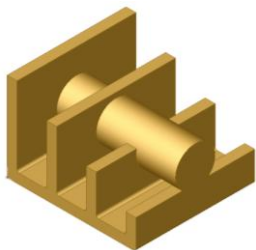
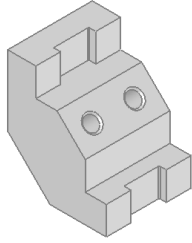
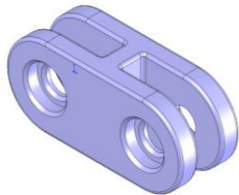


Table of Contents



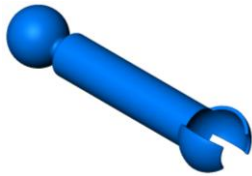
The status of a sketch	3-10
Hiding the sketch relation symbols	3-11
Exploring the different extrude options	3-15
Adding fillets	3-19
Questions for review	3-21
Exercise: Extrude Options	3-22

Chapter 4:

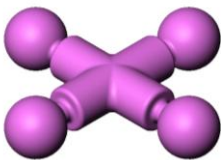


Basic Solid Modeling – Extrude and Revolve	4-1
Tools needed	4-2
Sketching the first profile	4-3
Extruding the first solid	4-3
Cutting the bore holes	4-5
Using mirror	4-6
Adding fillets	4-8
Creating the sub-components	4-9
Revolving the base	4-9
Adding chamfers	4-10
Using the straight slot command	4-13
Create a blind cut	4-15
Adding holes	4-16
Adding more fillets	4-17
Questions for review	4-19
Exercise: Extrude Boss and Cut	4-20

Chapter 5:



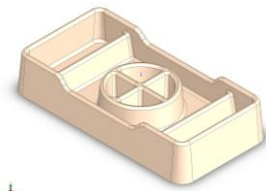
Revolve Parts – Ball Joint Arm	5-1
Tools needed	5-2
Creating the base profile	5-3
Revolving the base	5-3
Mirroring a features	5-5
Adding fillets	5-6
Questions for review	5-7
Exercise: Flat head Screw Driver	5-8



Derived Sketches – Center Ball Joint	5-9
Tools needed	5-10
Creating the base profile	5-11
Revolving the base	5-11
Creating a new plane	5-12
Making a derived sketch	5-12
Positioning the derived sketch	5-13
Adding fillets	5-14
Questions for review	5-15
Exercise: Revolve Parts	5-16

Table of Contents

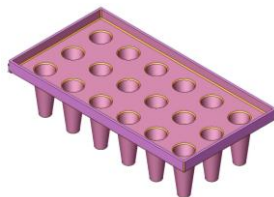
Chapter 6:



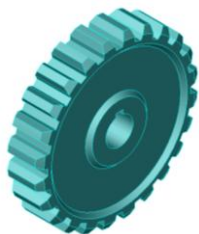
Rib & Shell Features – Formed Tray	6-1
Tools needed	6-2
Sketching the base profile	6-3
Extruding the base	6-3
Creating the side cutout	6-4
Shelling the upper half of the part	6-5
Adding rib features	6-6
Adding fillets	6-7
Shelling the lower half of the part	6-7
Questions for review	6-8
Exercise: Modeling a plastic bottle	6-9
Using the Contour Selection	6-15
Creating the main sketch	6-17
Extruding the base	6-18
Using the contour selection tool	6-19
Hiding the sketch	6-28
Questions for review	6-29
Exercise: Contour Selection	6-30



Chapter 7:



Linear Patterns – Test Tray	7-1
Tools needed	7-2
Sketching the base profile	7-3
Extruding the base feature	7-3
Creating the seed feature	7-4
Creating a linear pattern	7-5
Shelling the part	7-6
Adding fillets	7-7
Questions for review	7-8

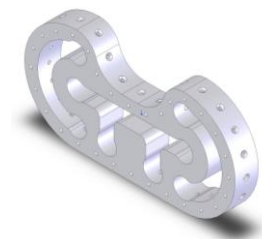


Circular Patterns – Spur Gear	7-9
Tools needed	7-10
Creating the base sketch	7-11
Using dynamic mirror	7-11
Adding relations	7-12
Revolving the base	7-13
Creating the first cut profile	7-14
Using convert entities	7-15
Using trim entities	7-16
Enabling the temporary axis	7-17
Making a circular pattern of the cut	7-17
Adding the key-way	7-19
Using sketch mirror	7-19
Questions for review	7-22

Table of Contents

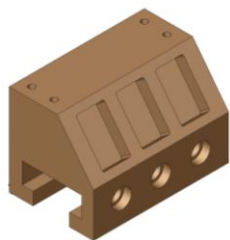


Circular Patterns – Circular Base Mount	7-23
Tools needed	7-24
Sketching the base profile	7-25
Revolving the base	7-26
Adding a side tab	7-26
Creating the first counterbore	7-27
Adding a circular pattern	7-28
Creating a new offset plane	7-28
Adding the pockets	7-29
Adding fillets	7-30
Questions for review	7-32



Curve Driven Patterns & Hole Wizard	7-33
Tools needed	7-34
Editing the sketch	7-35
Extruding the base	7-36
Creating the first hole	7-36
Constructing the Curve	7-37
Creating the Curve-Driven Pattern	7-38
Using the hole wizard	7-39
Using the curve driven pattern options	7-40

Chapter 8:



Part Configurations – Machined Block	8-1
Tools needed	8-2
Sketching the Base profile	8-3
Extruding the Base	8-3
Adding the pockets	8-4
Adding a counterbore hole	8-5
Patterning the counterbore	8-6
Mirroring features	8-7
Adding the blind holes	8-8
Creating a cutaway section	8-9
Switching between the configurations	8-12
Questions for Review	8-13
Exercise: Vary-Sketch Option	8-14
Exercise: Using the Wrap feature	8-15

Chapter 9:



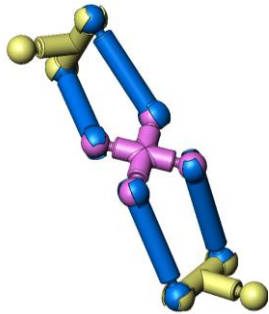
Modeling Threads – Threaded Insert	9-1
Tools needed	9-2
Sketching the base profile	9-3
Revolving the base	9-3
Creating the sweep path	9-4
Defining the helix	9-4

Table of Contents

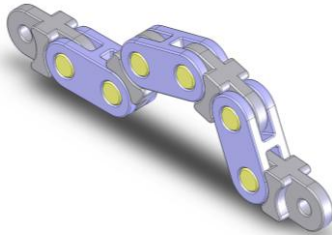


Creating the sweep profile	9-5
Creating the sweep cut	9-6
Mirroring the bodies	9-7
Adding chamfers	9-9
Questions for review	9-10
Exercise: Modeling Threads - Internal	9-11
Exercise: Internal & External Threads	9-13

Chapter 10:

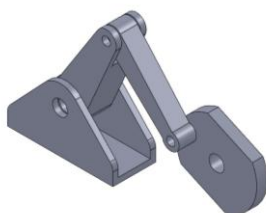


Bottom Up Assembly – Ball Joint Assembly	10-1
Tools needed	10-2
Inserting the 1st component	10-4
Inserting the 2nd component	10-5
Mating the components	10-6
Moving / rotating components	10-7
Adding more components	10-7
Questions for review	10-11
Assembly Exercises: Gate Assembly	10-12
Bottom Up Assembly (Cam Motions I)	10-13
Bottom Up Assembly (Cam Motions II)	10-14



Bottom Up Assembly – Link Assembly	10-15
Tools needed	10-16
Starting a new assembly templates	10-17
Inserting the first component	10-18
Adding other components	10-19
Changing the components colors	10-20
Using the selection filters	10-21
Adding mates	10-22
Making copies of components	10-24
Viewing the mate group	10-25
Rotating components	10-26
Using align vs. anti-align	10-30
Questions for review	10-32
Cam Followers Exercise: Using advanced mates	10-33
L1 Final Exam	10-37

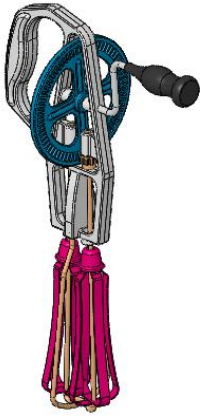
Chapter 11:



Layout Assembly	11-1
Tools Needed	11-2
Opening an existing assembly document	11-3
Activating the layout mode	11-3
Adding a new sketch	11-4
Setting the insertion point	11
Adding relations to the block	11-5

Table of Contents

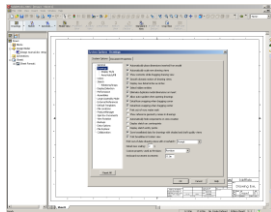
Testing the block	11-7
Converting a block into a component	11-8
Converting other blocks	11-11
Hiding the sketches	11-14
Viewing the assembly motions	11-14



SolidWorks Animator – The Basics	11-15
Switching to the Motion Study tab	11-15
Adding a rotary motor	11-16
Viewing the rotary motions	11-16
Using the animation wizard	11-17
Animating the explode / collapse	11-18
Changing the view orientation	11-21
Creating the flashing	11-25
Changing the shading options	11-27
Looping the animation	11-28
Saving as AVI format	11-29
Viewing with Windows Media Player	11-30

Drawing Topics

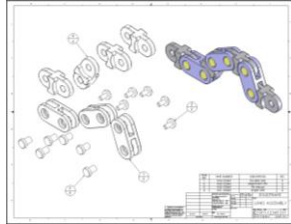
Chapter 12:



Drawing Preparations	12-1
Tools needed	12-2
Setting up new drawing	12-3
The drawing interface	12-4
Switching to the sheet format layer	12-5
Switching to the sheet layer	12-6
Setting the drawing options	12-7
Setting the document template options	12-8
Setting the drafting standard options	12-8
Setting the annotation option	12-8
Setting the dimension options	12-9
Setting the centerline / center mark options	12-9
Setting the bill of material options	12-10
Setting the detailing options	12-10
Setting the unit options	12-11
Setting the line font options	12-11
Setting the line thickness options	12-12
Setting the image quality options	12-12
Saving the drawing templates	12-13
Questions for review	12-14

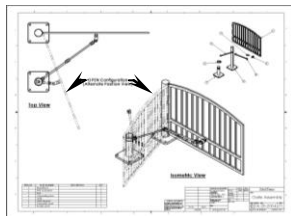
Table of Contents

Chapter 13:

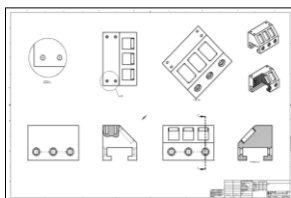


Assembly Drawings – Links Assembly	13-1
Tools needed	13-2
Creating a new drawing format	13-3
Editing the format / title block	13-5
Editing the sheet layer	13-6
Changing the drawing paper color	13-6
Browsing the documents	13-7
Adding the exploded view	13-9
Creating the isometric views	13-11
Setting the custom scale to drawing views	13-12
Changing to the shaded view	13-12
Inserting the bill of material (BOM)	13-13
Modifying the bill of material	13-15
Reversing the column headers	13-16
Adding balloons	13-17
Using circular split line balloons	13-18
Questions for review	13-19
Assembly Drawing Exercises	13-20

Assembly Drawing – Alternate Position View	13-23
Tools needed	13-24
Setting up a new drawing	13-25
Setting the custom view scale	13-27
Creating an alternate position view	13-28
Using the alternate position view and configurations	13-30
Adding custom text / annotation	13-31
Creating the isometric exploded view	13-32
Using auto balloons	13-33
Adding a bill of material	13-34
Questions for review	13-35



Chapter 14:



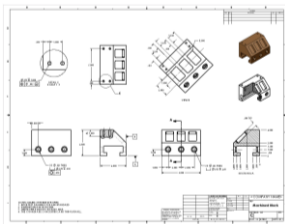
Drawing Views – Machined Block	14-1
Tools needed	14-2
Setting up a new drawing format	14-3
Editing the format / title block	14-4
Modifying existing text	14-6
Adding new text	14-6
Using the view Palette	14-7
Dragging and dropping from the view Palette	14-8
Adding an isometric views	14-9
Moving the drawing views	14-10
Breaking the alignment of the views	14-11
Adding a detail views	14-12

Table of Contents

Adding a projected views	14-13
Adding an auxiliary views	14-14
Adding a cross section views	14-15
Showing / hiding the hidden lines	14-16
Creating the broken-out-section views	14-16
Changing configurations	14-18
Adding cross hatch and hatch patterns	14-19
Modifying the cross hatch properties	14-20
Using geometric tolerances and flag notes	14-22
Using the modifying and hole symbols	14-23
ANSI symbols description	14-24

Detailing – Machined Block Details 14-26

Tools needed	14-27
Inserting the model dimensions	14-28
Re-arranging the dimensions	14-29
Adding center marks	14-31
Adding datum feature symbols	14-32
Using the hole callouts	14-34
Adding the geometric tolerances	14-34
Tolerances / precisions	14-38
Adding surface finishes	14-40
Adding notes	14-41
Changing the document fonts	14-42
Questions for review	14-44
Exercise 1 Modeling and Detailing	14-45
Exercise 2 Modeling and Detailing	14-46
Fastener Callouts	14-47
Thread Nomenclature	14-48
Reference reading: GD&T for Parts and Assemblies	14-49



Chapter 15:

Sheet Metal Drawings – Post Cap 15-1

Tools needed	15-2
Starting a new drawing sheet	15-3
Inserting the 3 standard views	15-4
Creating the isometric and flat pattern views	15-5
Adding a detail view	15-6
Adding the ordinate dimensions	15-7
Inserting the model dimensions	15-7
Adding dimensions to other views	15-8
Creating an isometric flat pattern	15-9
Showing the bend lines	15-10

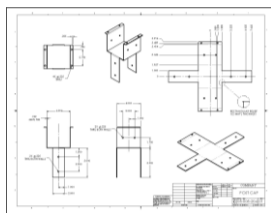
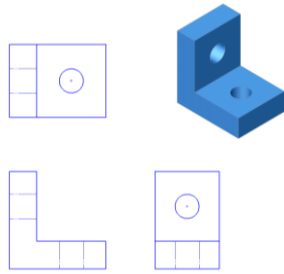
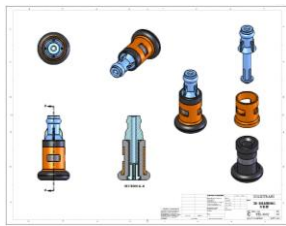


Table of Contents



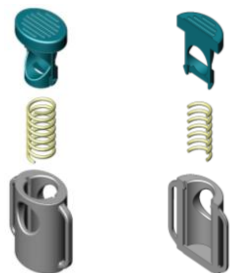
2D to 3D - Convert AutoCAD into SolidWorks	15-11
Tools needed	15-12
Importing an AutoCAD drawing into SolidWorks	15-13
Importing options for DXF / DWG	15-14
The 2D to 3D toolbar	15-15
Converting the sketches	15-16
Aligning the views	15-19
Creating the base extrude	15-20
Converting the cut features	15-22
Hiding the sketches	15-25
Questions for review	15-27
Exercise: Modeling and Detailing	15-28

Chapter 16:



e-Drawings – Soft Lock Assembly	16-1
Tools needed	16-2
Saving a SolidWorks drawing as an eDrawing	16-3
The eDrawing user interface	16-4
The eDrawing toolbar	16-5
The markup toolbar	16-6
Playing the animation	16-6
Self executable file type	16-7
3D drawing view	16-8
New 3D drawing View	16-9
Saving the drawing view state	16-10

Chapter 17:



Part I Configurations: – Button Assembly	17-1
Tools needed	17-2
Part Configurations	17-3
Changing the pitch of the spring	17-3
Assembly configurations	17-5
Changing the mate conditions	17-6
Drawing configurations	17-7
Switching the configurations	17-8



Part II Part, Assembly & Drawing Configs.: - Wheel	17-9
Tools needed	17-10
Opening the existing file	17-11
Adding new part configurations	17-11
Changing the number of spokes	17-12
Viewing the part configurations	17-13
Assembly configurations	17-14
Inserting the Sub-Assemblies	17-16
Adding mates to the sub-assembly	17-17

Table of Contents



Viewing the assembly configurations	17-19
Starting a new drawing	17-20
Creating the drawing views	17-21
Creating an aligned section view	17-22
Changing the configurations in a drawing	17-25
Adding the annotations in a drawing	17-25

Chapter 18:



Part –Design Tables	18-1
Tools needed	18-2
Part – design tables	18-3
Opening the an existing part	18-3
Inserting a new design table	18-4
Transferring dimensions to the design table	18-5
Using the excel-based formulas	18-5
Inserting features into the design table	18-7
Viewing the configs. generated by the design table	18-8



Assembly – Design Tables	18-9
Creating a new assembly design table	18-10
Defining the column headers	18-11
Entering the excel-based parameters	18-13
Viewing the configs. generated by the design table	18-14
Level 2 final exam	18-15
Table of U.S Measures	18-17
Table of U.S Measures	18-18

CSWP Core Preparation Practice

Preparation materials for the CSWP-Core examination	19-1
Part modeling and modifications	19-2
Configurations and design tables	19-20
Bottom up assembly	19-26

Student Testimonials:

Some of the actual student testimonials after completing the training courses from the Author. All documents are filed at local SolidWorks resellers.

SolidWorks 2011 Quick-Guides:

Quick Reference Guide to SolidWorks 2011 Command Icons and Toolbars.