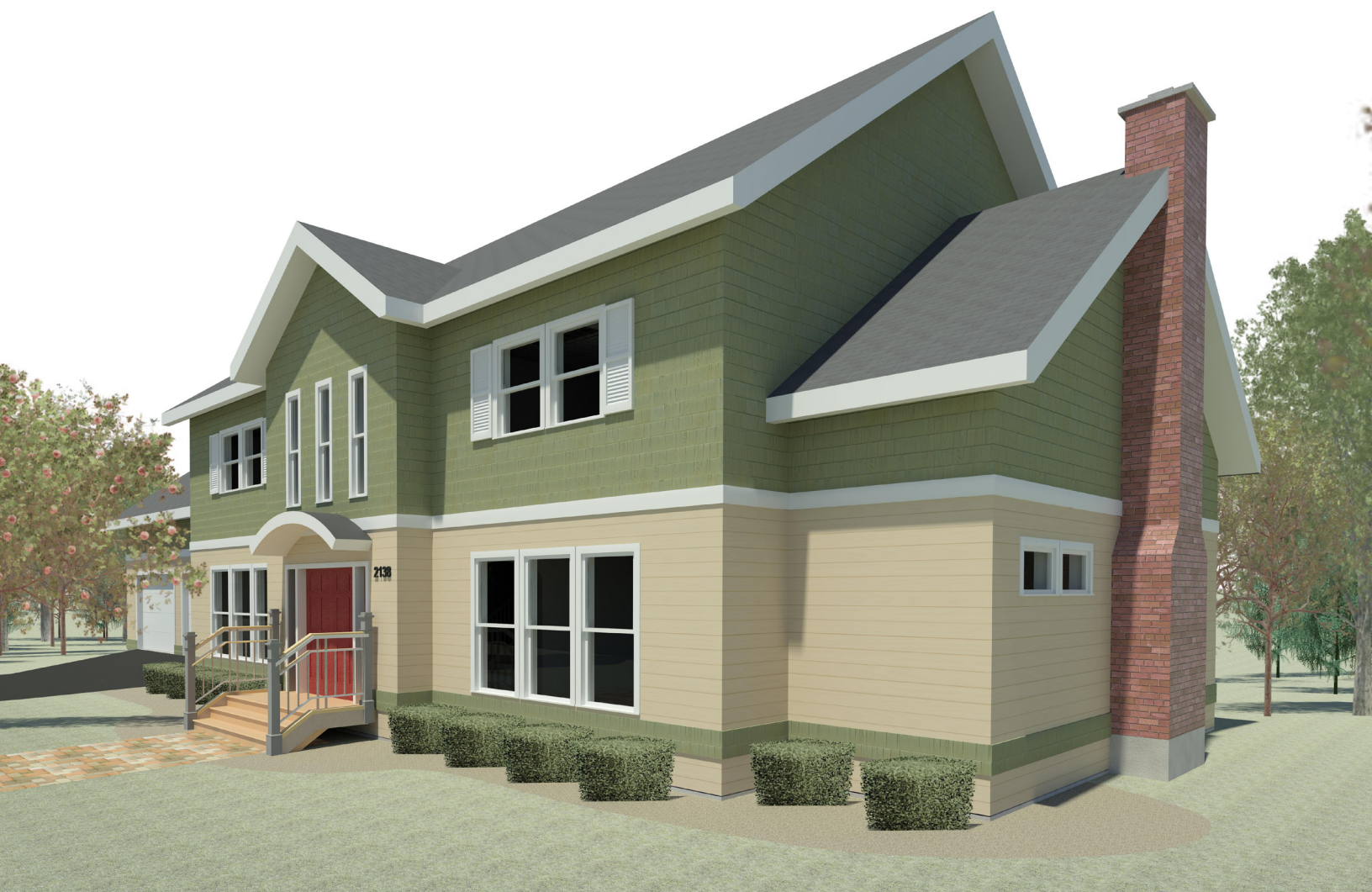


# Residential Design Using Autodesk® Revit® Architecture 2012

Daniel John Stine CSI, CDT



**SDC**  
PUBLICATIONS

[www.SDCpublications.com](http://www.SDCpublications.com)

Schroff Development Corporation



**New Chapter on CD:** Introduction to SketchUp

## ***TABLE OF CONTENTS***

---

	<b>Page</b>
<b>INTRODUCTION – Sketching Exercises</b>	
I-1 Introduction	I-1
I-2 Freehand sketching from photos	I-7
I-3 Surveying and Sketching Objects	I-19
I-4 Sketching Floor Plans	I-23
I-5 Sketching Elevations – two point perspective	I-29
I-6 Sketching Elevations – one point perspective	I-41
I-7 Sketching Plans – one point perspective	I-49
 <b>1. Getting Started with Autodesk® Revit® Architecture 2012</b>	
1-1 What is Revit Architecture 2012?	1-1
1-2 Overview of the Revit User Interface	1-10
1-3 Open, Save and Close an Existing Project	1-21
1-4 Creating a New Project	1-26
1-5 Using Pan and Zoom to View Your Drawings	1-28
1-6 Using Revit's Help System	1-33
<i>Self-Exam and Review Questions</i>	
 <b>2. Lake Cabin: FLOOR PLAN (The Basics)</b>	
2-1 Walls	2-1
2-2 Doors	2-5
2-3 Windows	2-7
2-4 Roof	2-9
2-5 Annotation and Dimensions	2-11
2-6 Printing	2-15
<i>Self-Exam and Review Questions</i>	
 <b>3. Overview of Linework and Modify Tools</b>	
3-1 Lines and Shapes	3-1
3-2 Snaps	3-15
3-3 Edit Tools	3-20
3-4 Annotations	3-33
<i>Self-Exam and Review Questions</i>	
 <b>4. Drawing 2D Architectural Objects</b>	
4-1 Sketching Rectilinear Objects	4-1
4-2 Sketching Objects with Curves	4-11
<i>Self-Exam and Review Questions</i>	
 <b>5. Residence: FLOOR PLAN (First Floor)</b>	
5-1 Project Setup	5-1
5-2 Exterior Walls	5-7
5-3 Interior Walls	5-23
5-4 Doors Openings and Windows	5-35
5-5 Adding a Fireplace	5-54
<i>Self-Exam and Review Questions</i>	
 <b>6. Residence: FLOOR PLANS (Second Floor and Basement Plans)</b>	
6-1 View Setup and Enclosing the Shell	6-1
6-2 Adding the Interior Walls	6-6
6-3 Adding Doors, Openings and Windows	6-10
6-4 Basement Floor Plan	6-15
6-5 Stairs	6-22
6-6 Dimensions	6-35
<i>Self-Exam and Review Questions</i>	

	<b>Page</b>
<b>7. Residence: ROOF</b>	
7-1 Roof Design Options	7-1
7-2 Gable Roof	7-11
7-3 Low Roof Elements	7-19
7-4 Skylights	7-30
<i>Self-Exam and Review Questions</i>	
<b>8. Residence: FLOOR SYSTEMS AND REFLECTED CEILING PLANS</b>	
8-1 Floor Systems	8-1
8-2 Ceiling Systems (Susp. ACT and Gypsum Board)	8-16
8-3 Placing Light Fixtures	8-31
8-4 Annotations	8-36
<i>Self-Exam and Review Questions</i>	
<b>9. Residence: ELEVATIONS</b>	
9-1 Creating and Viewing Exterior Elevations	9-1
9-2 Modifying the Project Model: Exterior Elevations	9-9
9-3 Creating and Viewing Interior Elevations	9-16
9-4 Modifying the Project Model: Interior Elevations	9-22
9-5 Design Options	9-25
<i>Self-Exam and Review Questions</i>	
<b>10. Residence: SECTIONS</b>	
10-1 Specify Section Cutting Plane in Plan View	10-1
10-2 Modifying the Project Model in Section View	10-7
10-3 Wall Sections	10-15
10-4 Annotations and Detail Components	10-25
<i>Self-Exam and Review Questions</i>	
<b>11. Residence: INTERIOR DESIGN</b>	
11-1 Bathroom Layouts	11-1
11-2 Kitchen Layout	11-7
11-3 Furniture	11-20
11-4 Adding Guardrails	11-25
<i>Self-Exam and Review Questions</i>	
<b>12. Residence: SCHEDULES</b>	
12-1 Room and Door Tags	12-1
12-2 Generate a Door Schedule	12-6
12-3 Generate a Room Finish Schedule	12-10
<i>Self-Exam and Review Questions</i>	
<b>13. Residence: PHOTO-REALISTIC RENDERING</b>	
13-1 Creating an Exterior Rendering	13-1
13-2 Rendering an Isometric in Section	13-14
13-3 Creating an Interior Rendering	13-21
13-4 Adding People to the Rendering	13-27
<i>Self-Exam and Review Questions</i>	
<b>14. Residence: CONSTRUCTION DOCUMENTS SET</b>	
14-1 Setting Up a Sheet	14-1
14-2 Sheet Index	14-10
14-3 Printing a Set of Drawings	14-17
<i>Self-Exam and Review Questions</i>	

## Appendix A – Engineering Graphics

## Appendix B – Autodesk Revit Architecture Certification Exam, Introduction and sample test

## ***DVD CONTENT***

### **15. INTRODUCTION TO SITE DESIGN - 14 pages**

- 15-1 Site Tools

### **16. INTRODUCTION TO REVIT CONTENT CREATION - 67 pages**

- 16-1 Basic Family Concepts
- 16-2 The Box: Creating the Geometry
- 16-3 The Box: Adding Parameters
- 16-4 The Box: Formulas and Materials
- 16-5 The Box: Family Types and Categories
- Self-Exam & Review Questions*

### **17. INTRODUCTION TO COMPUTERS - 50 pages**

- 17-1 Computer Basics: Terms and Functions
- 17-2 Overview of the Windows User Interface
- 17-3 File Management Introduction
- Self-Exam & Review Questions*

### **18. INTRODUCTION TO SKETCHUP - 84 pages**

- 18-1 What is Google SketchUp used for?
- 18-2 Overview of the SketchUp User Interface
- 18-3 Open, Save and Close
- 18-4 Viewing SketchUp Models
- 18-5 Help System
- 18-6 The Basic Entities
- 18-7 Beginning with the Basics – 2D Sketching
- 18-8 3D Modeling
- 18-9 Adding Materials

### **Appendix C – ROOF STUDY WORKBOOK – DRAFT EDITION - 90 pages**

### **Appendix D – FINDING MISSING ELEMENTS IN REVIT - 24 pages**

#### **Videos**

1. User Interface
2. Walls
3. Doors and Windows
4. Stairs
5. Roofs
6. Floors
7. Ceilings
8. Elevations
9. Sections
10. Schedules
11. Rendering
12. Design Options
13. Sheets and Sheet Lists
14. Worksharing Introduction
15. Phases
16. Sweeps and Reveals