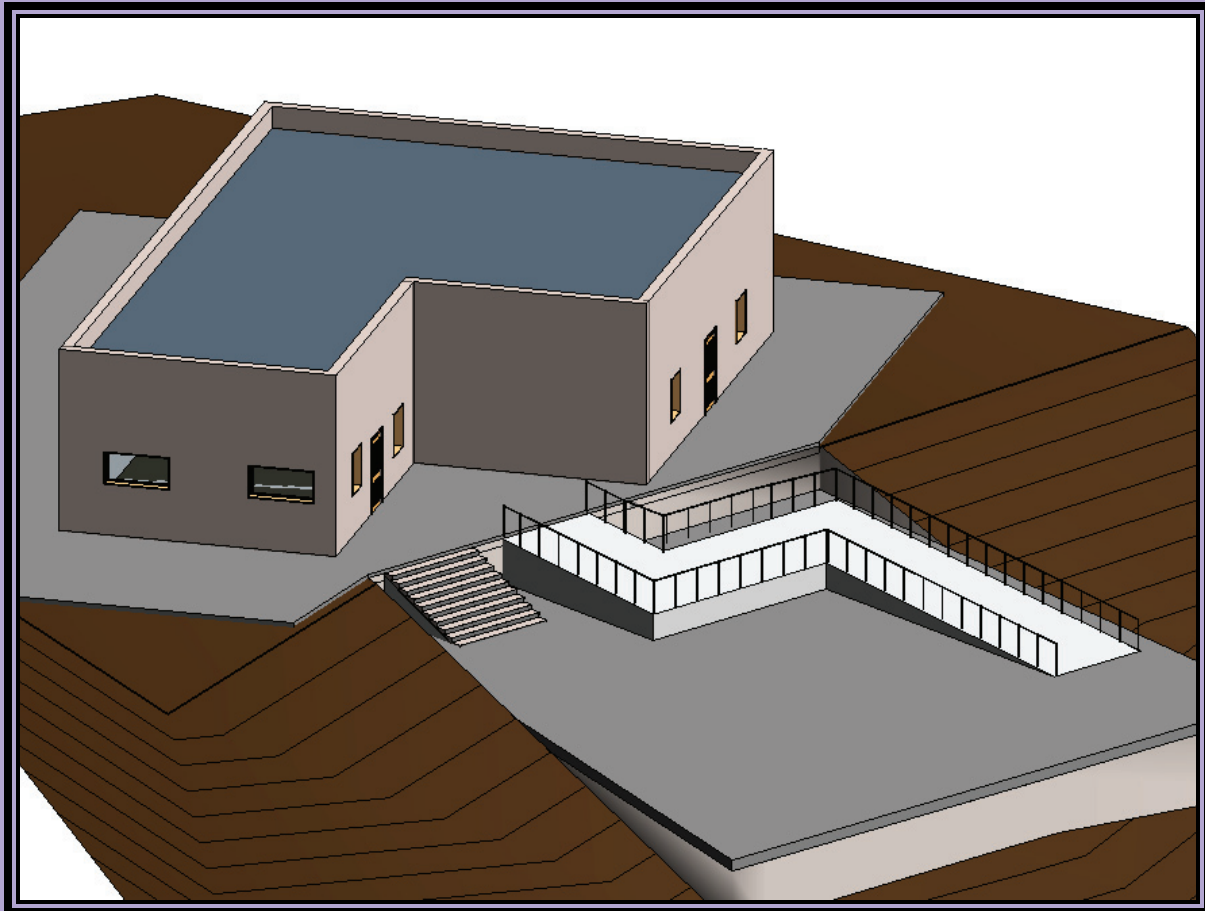


Inside:



Revit Structure 2012 Basics:

Framing and Documentation



Elise Moss

autodesk[®]
authorized publisher

SDC
PUBLICATIONS

www.SDCpublications.com

Schroff Development Corporation

TABLE OF CONTENTS

Preface	i
Acknowledgements	i
Table of Contents	ii
Lesson 1	
Structural Columns and Walls	
Exercise 1-1	
Load a Structural Column	1-2
Exercise 1-2	
Modify a Structural Column Family	1-4
Exercise 1-3	
Create an Opening in a Structural Column	1-8
Exercise 1-4	
Use AutoCAD Profile to Create a Structural Column Family	1-10
Exercise 1-5	
Add and Modify Structural Columns	1-19
Exercise 1-6	
Edit a Wall Profile	1-24
Exercise 1-7	
Add an Opening in a Wall	1-26
Lesson 2	
Framing	
Exercise 2-1	
Add Structural Framing	2-3
Exercise 2-2	
Create Group	2-8
Exercise 2-3	
Create a Beam System	2-12
Exercise 2-4	
Create a Moment Frame	2-18
Exercise 2-5	
Adding Braces	2-20
Exercise 2-6	
Adding Openings in Beams	2-27
Exercise 2-7	
Sloped Beams	2-31
Exercise 2-8	
Curved Beams	2-36
Exercise 2-9	
Truss	2-42
Lesson 3	
Boosting Productivity – Setting up Your Project	
Exercise 3-1	
Browser Organization	3-2

Exercise 3-2	
Recover and Use Backup Files	3-7
Exercise 3-3	
Create a View Template	3-12
Exercise 3-4	
Transfer Project Standards	3-16
Lesson 4	
Foundations and Slabs	
Exercise 4-1	
Creating a Sloped Floor Slab	4-2
Exercise 4-2	
Create a Shaft Opening	4-11
Exercise 4-3	
Attach Columns to a Floor	4-14
Exercise 4-4	
Add Slab Edges	4-16
Exercise 4-5	
Define Slab Edge	4-18
Exercise 4-6	
Add Footings	4-20
Exercise 4-7	
Add Wall Foundations	4-23
Exercise 4-8	
Add Ramp	4-25
Exercise 4-9	
Parking Structure Ramp	4-29
Lesson 5	
Tags, Symbols, Legends, and Schedules	
Exercise 5-1	
Create and Use Notes	5-2
Exercise 5-2	
Create and Use Legends	5-4
Exercise 5-3	
Create a Symbol	5-10
Exercise 5-4	
Add a Symbol to a Drafting View	5-15
Exercise 5-5	
Use Schedule to Change Types	5-19
Exercise 5-6	
Export a Schedule	5-20
Exercise 5-7	
Create and Use a Sheet List	5-22
Exercise 5-8	
Create a View List	5-25
Exercise 5-9	
Create a Custom Tag	5-28
Exercise 5-10	
Using a Custom Tag	5-30

Lesson 6

Sections, Elevations, Details, and Drafting Views

Exercise 6-1	
Use of Cropped Views	6-2
Exercise 6-2	
Create a Gusset Plate Detail	6-4
Exercise 6-3	
Create a Wall Section	6-18
Exercise 6-4	
Save a Drafting View	6-28
Exercise 6-5	
Import a Drafting View	6-29
Exercise 6-6	
Use of Scope Boxes	6-30

Lesson 7

Collaboration

Exercise 7-1	
Import a CAD File	7-2
Exercise 7-2	
Export to DXF	7-5
Exercise 7-3	
Check Coordination Views	7-7
Exercise 7-4	
Interference Checking	7-15

Lesson 8

Structural Analysis

Exercise 8-1	
Analytical Views	8-2
Exercise 8-2	
Analytical Adjust	8-12
Exercise 8-3	
Load Takedown	8-14
Exercise 8-4	
Static Analysis of Slabs	8-18
Exercise 8-5	
Static Analysis of Beams	8-25
Exercise 8-6	
Analytical Checks	8-31
Exercise 8-7	
Boundary Conditions	8-34
Exercise 8-8	
Export Analytical Model to Robot	8-36

About the Author