

SolidWorks 2012

Part I - Basic Tools

Parts, Assemblies and Drawings

Paul Tran, CSWP, CSWI

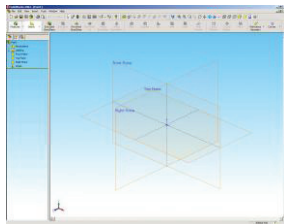


Table of Contents

Table of Contents

Copyrights Notices
Disclaimer
Trademarks

Introduction:

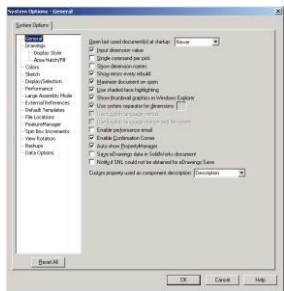


SolidWorks 2012 User Interface

The 3 references planes	XII
The toolbars	XXIII
The system feedback symbols	XXV
The status bar	XXV
2D sketch examples	XVI
3D feature examples	XVII

Setting the System Parameters

Chapter 1:



The system settings

The system options	1-1
The general options	1-1
The drawings options	1-2
The display type options	1-3
The area hatch options	1-3
The colors options	1-4
The sketch options	1-4
The relations / snaps options	1-5
The display / selection options	1-5
The performance options	1-6
The large assembly mode options	1-6
The external references options	1-7
The default templates options	1-7
The file location options	1-8
The feature manager options	1-8
The spin box increment options	1-9
The view rotation options	1-9
The backups / recover options	1-10
The hole wizards / toolbox options	1-10

Table of Contents

The file explorer options	1-11
The search options	1-12
The collaboration / advanced option	1-13
Questions for review	1-14

Chapter 2:

Document Templates	2-1
Document properties	2-1
The drafting standard options	2-2
The annotations options	2-2
The balloon options	2-3
The datum options	2-3
The geometric tolerance options	2-4
The note options	2-4
The surface finish options	2-5
The weld symbol options	2-5
The dimensions options	2-6
The angle options	2-6
The arc length options	2-7
The chamfer options	2-7
The diameter options	2-8
The hole callout options	2-8
The linear options	2-9
The ordinate options	2-9
The radius options	2-10
The virtual sharp options	2-10
The table options	2-11
The bill of material options	2-11
The detailing options	2-12
The grid / snap options	2-12
The units options	2-13
The model display options	2-13
The material properties options	2-14
The image quality	2-14
The sheet metal options	2-15
The plane display options	2-15
The dimXpert options	2-16
The size dimension options	2-16
The location dimension	2-17
The chain dimension options	2-17
The geometric tolerance	2-18
The chamfer controls options	2-18
The display options	2-19

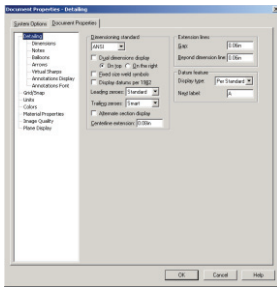


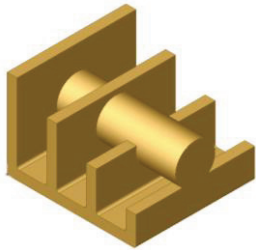
Table of Contents

Saving the document template settings	2-19
Questions for review	2-20

Basic Modeling Topics

Chapter 3:

Basic Solid Modeling – Extrude Options	3-1
Tools needed	3-2
Starting a new part	3-3
Changing the background color	3-4
Starting a new sketch	3-5
Using the line command	3-6
Adding geometric relation or constraints	3-7
Geometric relation examples	3-9
Adding dimensions	3-10
The status of a sketch	3-11
Hiding the sketch relation symbols	3-12
Extruding the base	3-13
Sketching on a planar face	3-14
Exploring the different extrude options	3-15
Extruding with blind	3-16
Extruding with through all	3-16
Extruding with up to next	3-16
Extruding with up to vertex	3-17
Extruding with up to surface	3-17
Extruding with offset from surface	3-17
Extruding with up to body	3-18
Extruding with mid-plane	3-18
Extrude summary	3-19
Adding fillets	3-20
Fillets and rounds	3-21
Questions for review	3-22
Exercise: Extrude Boss & Extrude Cuts	3-23



Chapter 4:

Basic Solid Modeling – Extrude and Revolve	4-1
Tools needed	4-2
Sketching the first profile	4-3
Extruding the first solid	4-3
Waking up the entities	4-4
Cutting the bore holes	4-5
Using mirror	4-6

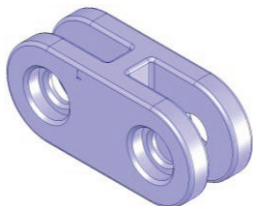


Table of Contents



Adding fillets	4-8
Creating the sub-components	4-10
Revolving the base	4-10
Adding chamfers	4-11
Using the straight slot command	4-14
Create a blind cut	4-16
Adding holes	4-17
Adding more fillets	4-18
Questions for review	4-20
Exercise: Extrude Boss and Extrude Cut	4-21

Chapter 5:

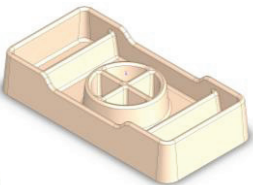


Revolve Parts – Ball Joint Arm	5-1
Tools needed	5-2
Creating the base profile	5-3
Trimming the entities	5-3
Revolving the base	5-3
Sketching the open-end profile	5-4
Mirroring a features	5-6
Adding fillets	5-7
Questions for review	5-8
Exercise: Flat head Screw Driver	5-9



Derived Sketches – Center Ball Joint	5-12
Tools needed	5-13
Creating the base profile	5-14
Revolving the base	5-14
Creating a new plane	5-15
Making a derived sketch	5-15
Positioning the derived sketch	5-16
Adding fillets	5-17
Questions for review	5-18
Exercise: Revolve Parts	5-19

Chapter 6:



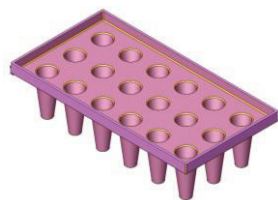
Rib & Shell Features – Formed Tray	6-1
Tools needed	6-2
Sketching the base profile	6-3
Extruding the base	6-3
Creating the side cutout	6-4
Offsetting the entities	6-5
Shelling the upper half of the part	6-5
Adding rib features	6-6
Adding fillets	6-7

Table of Contents

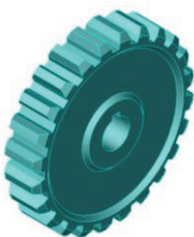


Shelling the lower half of the part	6-8
Questions for review	6-9
Exercise: Modeling a plastic bottle	6-10
Using the Contour Selection	6-16
Opening the main sketch	6-18
Extruding the base	6-19
Using the contour selection tool	6-20
Hiding the sketch	6-29
Questions for review	6-30
Exercise: Contour Selection	6-31

Chapter 7:



Linear Patterns – Test Tray	7-1
Tools needed	7-2
Sketching the base profile	7-3
Extruding the base feature	7-3
Creating the seed feature	7-4
Creating a linear pattern	7-5
Shelling the part	7-6
Adding fillets	7-7
Questions for review	7-8



Circular Patterns – Spur Gear	7-9
Tools needed	7-10
Creating the base sketch	7-11
Using dynamic mirror	7-11
Adding relations	7-12
Canceling auto-relations	7-12
Revolving the base	7-13
Sketching the thread profile	7-14
Using convert entities	7-15
Using trim entities	7-16
Enabling the temporary axis	7-17
Making a circular pattern of the cut	7-18
Adding the key-way	7-19
Using sketch mirror	7-20
Questions for review	7-22



Circular Patterns – Circular Base Mount	7-23
Tools needed	7-24
Sketching the base profile	7-25
Revolving the base	7-25
Adding a side tab	7-26

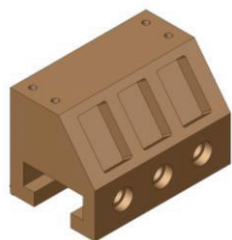
Table of Contents

Creating the first counterbore	7-27
Adding a circular pattern	7-28
Creating a new offset plane	7-28
Adding the pockets	7-29
Adding fillets	7-30
Questions for review	7-32

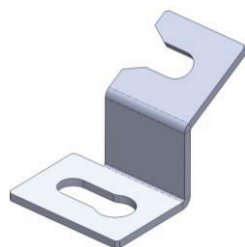


Curve Driven Patterns & Hole Wizard	7-33
Tools needed	7-34
Editing the sketch	7-35
Extruding the base	7-36
Creating the first hole	7-36
Constructing the Curve	7-37
Creating the Curve-Driven Pattern	7-38
Using the hole wizard	7-39
Using the curve driven pattern options	7-40

Chapter 8:



Part Configurations – Machined Block	8-1
Tools needed	8-2
Sketching the Base profile	8-3
Adding the ordinate dimensions	8-3
Extruding the Base	8-3
Adding the pockets	8-4
Adding a counterbore hole	8-5
Patterning the counterbore	8-6
Mirroring features	8-7
Adding the blind holes	8-8
Creating a cutaway section configuration	8-9
Switching between the configurations	8-12
Questions for Review	8-13
Exercise: Vary-Sketch Option	8-14
Exercise: Using the Wrap feature	8-15
Creating a plane on surface	8-15
Writing an equation	8-16
Wrapping with deboss option	8-17
Mirroring the body	8-18



Understanding and repairing errors	8-19
Error symbols and description	8-19
Error colors	8-19
Reading the error messages in what's wrong box	8-20
Viewing error messages from the Feature tree	8-20

Table of Contents

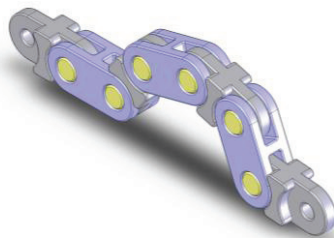
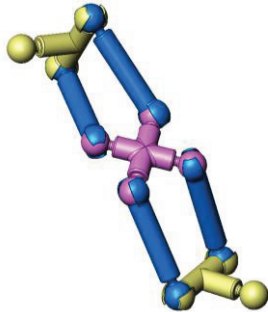
Using display / delete relations	8-22
Replacing relations	8-23
Re-attaching dimensions	8-24
Setting over defined / not solved options	8-25
The status of the FeatureManager tree	8-26

Chapter 9:



Modeling Threads – Threaded Insert	9-1
Tools needed	9-2
Sketching the base profile	9-3
Revolving the base	9-3
Creating the sweep path	9-4
Defining the helix	9-4
Creating the sweep profile	9-5
Creating the sweep cut	9-6
Mirroring the bodies	9-7
Adding chamfers	9-9
Questions for review	9-10
Exercise: Modeling threads - Internal	9-11
Exercise: Internal threads	9-15
Exercise: External threads	9-23

Chapter 10:

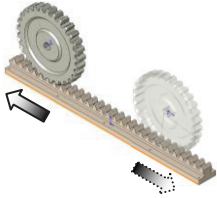


Bottom Up Assembly – Ball Joint Assembly	10-1
Tools needed	10-2
Starting a new assembly	10-3
Inserting the components	10-4
Mating the components	10-6
Moving / rotating components	10-7
Adding more components	10-7
Questions for review	10-11
Bottom Up Assembly – Links Assembly	10-12
Tools needed	10-13
Starting a new assembly templates	10-14
Inserting the first component	10-15
Adding other components	10-16
Changing the components colors	10-17
Using the selection filters	10-18
Adding standard mates	10-19
Adding width mates	10-20
Making copies of components	10-21
Viewing the mate group	10-22
Rotating components	10-23

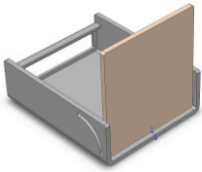
Table of Contents

Using align vs. anti-align	10-24
Questions for review	10-29
Assembly Exercises: Gate Assembly	10-12

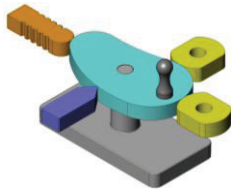
Chapter 11:



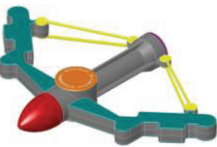
Using Advanced Mates	11-1
Rack and pinion mate	11-1
Adding mates	11-2
Suppressing mates	11-3
Using Mechanical Mates	11-3
Adding a rack and pinion mate	11-3
Testing the mates	11-4
Creating a linear motion	11-5
Adding a linear motor	11-5
Playing back the motion	11-6



Limit Mates and Cam Mates	11-7
Opening an assembly document	11-7
Adding advanced and mechanical mates	11-8
Adding a width mate	11-8
Adding a cam mate	11-9
Adding a limit mate	11-12
Testing the mates	11-13



Using Cam Followers	11-15
Opening and arranging the components	11-15
Adding the standard mates	11-16
Adding the mechanical mates - Cam follower	11-17
Viewing the cam motions	11-18



L1 Final Exam	10-37
----------------------	--------------

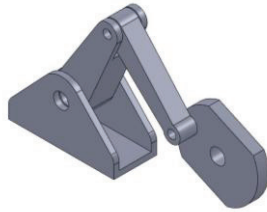
Using PhotoView360 – The Basics	11-25
Activating the add-in	11-25
Setting the appearance	11-26
Setting the scene	11-27
Setting the image quality	11-28
Rendering the final image	11-29
Saving the rendered image	11-29



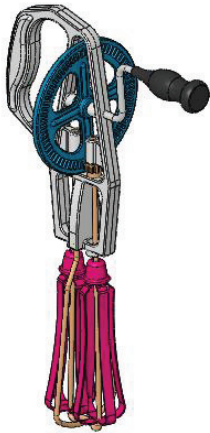
Chapter 12:

Layout Assembly	12-1
Tools Needed	12-2
Opening an assembly document	12-3

Table of Contents



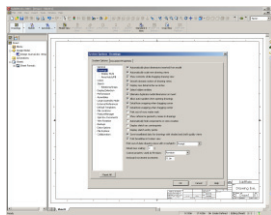
Activating the layout mode	12-3
Adding a new sketch	12-4
Making a block	12-4
Setting the insertion point	12-5
Adding relations to the block	12-5
Adding dimensions to the blocks	12-6
Testing the block	12-7
Converting a block into a component	12-8
Converting other blocks	12-11
Hiding the sketches	12-14
Viewing the assembly motions	12-14



SolidWorks Animator – The Basics	12-15
Switching to the Motion Study tab	12-15
Adding a rotary motor	12-16
Viewing the rotary motions	12-16
Using the animation wizard	12-17
Animating the explode / collapse	12-18
Changing the view orientation	12-21
Creating the flashing	12-25
Changing the shading options	12-27
Looping the animation	12-28
Saving as AVI format	12-29
Viewing with Windows Media Player	12-30

Drawing Topics

Chapter 13:



Drawing Preparations	13-1
Tools needed	13-2
Setting up new drawing	13-3
The drawing interface	13-4
Switching to the sheet format layer	13-5
Switching to the sheet layer	13-6
Setting the drawing options	13-7
Setting the document template options	13-8
Setting the drafting standard options	13-8
Setting the annotation option	13-8
Setting the dimension options	13-9
Setting the centerline / center mark options	13-9
Setting the bill of material options	13-10
Setting the view label options	13-11
Setting the unit options	13-12

Table of Contents

	Setting the line font options	13-13
	Setting the line thickness options	13-13
	Setting the image quality options	13-14
	Saving the drawing templates	13-15
	Questions for review	13-16
Chapter 14:	Assembly Drawings – Links Assembly	14-1
	Tools needed	14-2
	Creating a new drawing format	14-3
	Editing the format / title block	14-5
	Editing the sheet layer	14-6
	Changing the drawing paper color	14-6
	Browsing the documents	14-7
	Switching to an exploded view	14-9
	Creating the isometric views	14-11
	Setting the custom scale to drawing views	14-12
	Changing to the shaded view	14-12
	Inserting the bill of material (BOM)	14-13
	Modifying the bill of material	14-15
	Reversing the column headers	14-16
	Adding balloons	14-17
	Using circular split line balloons	14-18
	Questions for review	14-19
	Assembly Drawing Exercises	14-20
	Assembly Drawing – Alternate Position Vie	14-23
	Tools needed	14-24
	Setting up a new drawing	14-25
	Setting the custom view scale	14-27
	Creating an alternate position view	14-28
	Switching configurations	14-30
	Adding custom text / annotation	14-31
	Creating the isometric exploded view	14-32
	Using auto balloons	14-33
	Adding a bill of material	14-34
	Questions for review	14-35
Chapter 15:	Drawing Views – Machined Block	15-1
	Tools needed	15-2
	Setting up a new drawing format	15-3
	Editing the format / title block	15-4
	Modifying existing text	15-6

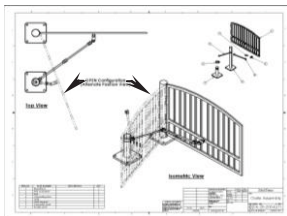
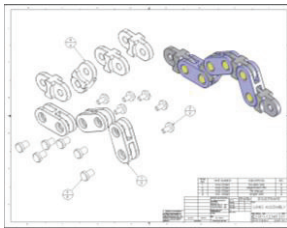
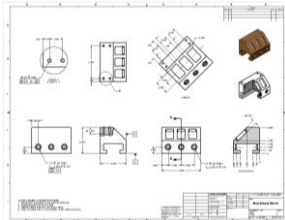
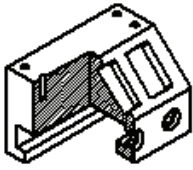
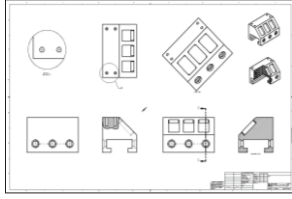


Table of Contents



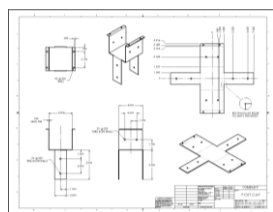
Adding new text	15-6
Using the view Palette	15-7
Dragging and dropping from the view Palette	15-8
Adding an isometric views	15-9
Moving the drawing views	15-10
Breaking the alignment of the views	15-11
Creating a detail views	15-12
Using the detail view options	15-12
Adding a projected views	15-13
Creating an auxiliary views	15-14
Adding a cross section views	15-15
Showing / hiding the hidden lines	15-16
Creating the broken-out-section views	15-16
Changing configurations	15-18
Adding cross hatch and hatch patterns	15-19
Modifying the cross hatch properties	15-20
Using geometric tolerances and flag notes	15-22
Using the modifying and hole symbols	15-23
ANSI symbols description	15-24

Detailing – Machined Block Details 15-26

Tools needed	15-27
Inserting the model dimensions	14-28
Re-arranging the dimensions	15-29
Adding center marks	15-31
Adding datum feature symbols	15-32
Datum reference & geometric tolerance examples	15-33
Using the hole callouts	15-34
Adding the geometric tolerances	15-34
Adding tolerances / precisions	15-38
Adding surface finishes	15-39
Adding notes	15-41
Changing the document fonts	15-42
Questions for review	15-44
Exercise 1: Modeling and Detailing	15-45
Exercise 2: Drawing & Detailing	15-46
Fastener Callouts	15-47
Thread Nomenclature	15-48
Reference reading: GD&T for Parts and Assemblies	15-49

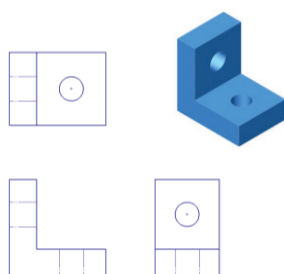
Chapter 16:	Sheet Metal Drawings – Post Cap 16-1
	Tools needed 16-2

Table of Contents



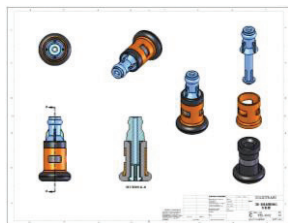
Starting a new drawing	16-3
Inserting the 3 standard views	16-4
Creating the isometric and flat pattern views	16-5
Adding a detail view	16-6
Adding the ordinate dimensions	16-7
Inserting the model dimensions	16-7
Adding dimensions to other views	16-8
Creating an isometric flat pattern	16-9
Showing the bend lines	16-10

2D to 3D - Convert AutoCAD into SolidWorks 16-11



Tools needed	16-12
Importing an AutoCAD drawing into SolidWorks	16-13
Importing options for DXF / DWG	16-14
The 2D to 3D toolbar	16-15
Converting the sketches	16-16
Aligning the views	16-19
Creating the base extrude	16-20
Converting the cut features	16-22
Hiding the sketches	16-25
Questions for review	16-27
Exercise: Modeling and Detailing	16-28

e-Drawings – Soft Lock Assembly 16-29



Tools needed	16-30
Saving a SolidWorks drawing as an eDrawing	16-31
The eDrawing user interface	16-32
The eDrawing toolbar	16-33
The markup toolbar	16-34
Playing the animation	16-34
Adding markup notes	16-35
Adding a stamp	16-36
Saving as a self executable file type	16-37
3D drawing view	16-38
Creating a new 3D drawing View	16-39
Saving the drawing view state	16-39
Inserting a model view	16-40

Chapter 17:

Configurations Part I: – Button Assembly 17-1

Tools needed	17-2
Part Configurations	17-3
Changing the pitch of the spring	17-4

Table of Contents

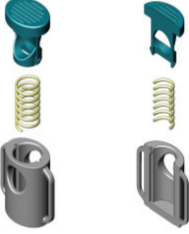



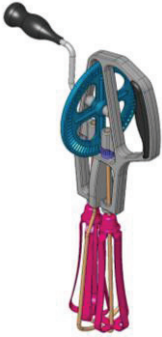
	Assembly configurations	17-5
	Changing the mate conditions	17-6
	Drawing configurations	17-7
	Switching the configurations	17-8
	Configurations Part II: Assembly & Drawing	17-9
	Tools needed	17-10
	Opening the existing file	17-11
	Adding new part configurations	17-11
	Changing the number of spokes	17-12
	Viewing the part configurations	17-13
	Assembly configurations	17-14
	Inserting the Sub-Assemblies	17-16
	Adding mates to the sub-assembly	17-17
	Viewing the assembly configurations	17-19
	Starting a new drawing	17-20
	Creating the drawing views	17-21
	Creating an aligned section view	17-22
	Changing the configurations in a drawing	17-25
	Adding the annotations in a drawing	17-25
Chapter 18:	Part –Design Tables	18-1
	Tools needed	18-2
	Part – design tables	18-3
	Opening the an existing part	18-3
	Inserting a new design table	18-4
	Transferring dimensions to the design table	18-5
	Using the excel-based formulas	18-5
	Inserting features into the design table	18-7
	Entering the suppress / un-suppress commands	18-8
	Viewing the configs. generated by the design table	18-8
	Assembly – Design Tables	18-9
	Opening an assembly document	18-9
	Creating a new assembly design table	18-10
	Setting the headers alignment	18-10
	Defining the column headers	18-11
	Entering the excel-based parameters	18-13
	Viewing the configs. generated by the design table	18-14
	Exercise: Part design tables	18-15
	Level 2 final exam	18-19

Table of Contents

Table of U.S Measures	18-21
Table of U.S Measures	18-22

CSWP Core Preparation Practice

Preparation materials for the CSWP-Core examination	19-1
Part modeling and modifications	19-2
Configurations and design tables	19-20
Part modifications	19-26
Bottom up assembly	19-30

Student Testimonials:

Some of the actual student testimonials after completing the training courses from the Author. All documents are filed at local SolidWorks resellers.

SolidWorks 2012 Quick-Guides:

Quick Reference Guide to SolidWorks 2012 Command Icons and Toolbars.

