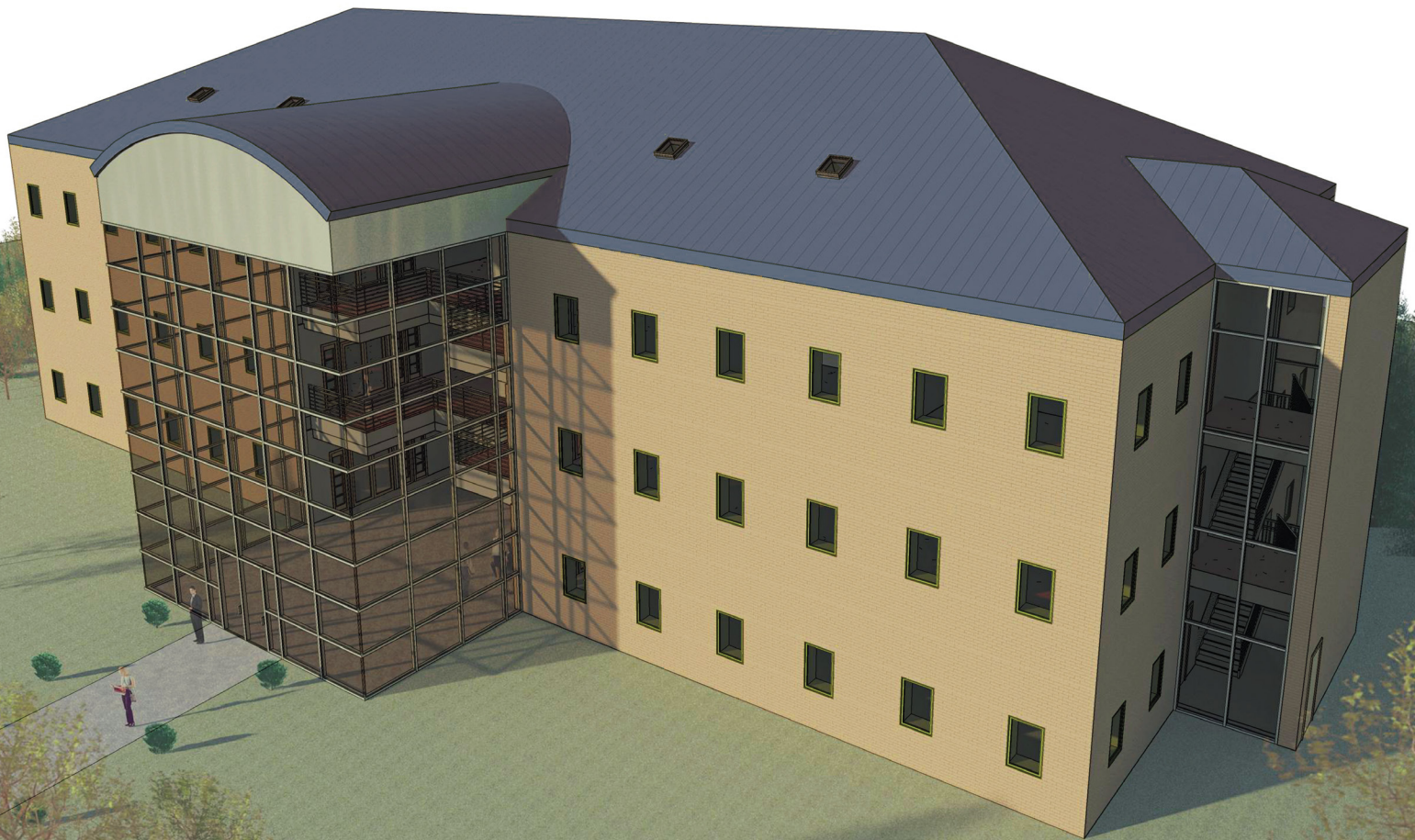


# Commercial Design Using Autodesk® Revit® Architecture 2013

Includes video instruction

Daniel John Stine CSI, CDT



Visit the following websites to learn more about this book:



[amazon.com](https://www.amazon.com)

[BARNES & NOBLE](https://www.barnesandnoble.com)

[Google books](https://books.google.com)

## Table of Contents

---

<b>1.</b>	<b>Getting Started With Revit Architecture 2013</b>	
1-1	What is Revit Architecture 2013?	1-1
1-2	Overview of the Revit User Interface	1-10
1-3	Open, Save & Close an Existing Project	1-21
1-4	Creating a New Project	1-26
1-5	Using Pan & Zoom to View Your Drawings	1-28
1-6	Using Revit's Help System	1-33
	<i>Self-Exam &amp; Review Questions</i>	
<b>2.</b>	<b>Quick Start: Small Office</b>	
2-1	Walls, Grids and Dimensions	2-1
2-2	Doors	2-18
2-3	Windows	2-25
2-4	Roof	2-28
2-5	Annotation, Room Tags & Schedules	2-33
2-6	Printing	2-38
	<i>Self-Exam &amp; Review Questions</i>	
<b>3.</b>	<b>Office Building: FLOOR PLAN (First Floor)</b>	
3-1	Project Overview	3-1
3-2	Exterior Walls	3-3
3-3	Interior Walls	3-11
3-4	Elevator	3-19
3-5	Doors and Windows	3-25
	<i>Self-Exam &amp; Review Questions</i>	
<b>4.</b>	<b>Office Building: FLOOR PLANS (Second and Third Floors)</b>	
4-1	Copy Common Walls from First Floor	4-1
4-2	Additional Interior Walls	4-7
4-3	Setting the Floor-to-Floor Height	4-10
4-4	Stairs	4-11
	<i>Self-Exam &amp; Review Questions</i>	
<b>5.</b>	<b>Office Building: ROOF</b>	
5-1	Hip Roof	5-1
5-2	Skylights	5-11
5-3	Roof Design Options (Style, Pitch & Overhang)	5-15
	<i>Self-Exam &amp; Review Questions</i>	
<b>6.</b>	<b>Office Building: FLOOR SYSTEMS and REFLECTED CEILING PLANS</b>	
6-1	Floor Systems	6-1
6-2	Ceiling Systems (Susp. ACT & Gypsum Board)	6-10
6-3	Placing Fixtures (Lights & Diffusers)	6-19
6-4	Annotations	6-23
	<i>Self-Exam &amp; Review Questions</i>	
<b>7.</b>	<b>Office Building: INTERIOR and EXTERIOR ELEVATIONS</b>	
7-1	Creating & Viewing Parametric Exterior Elevations	7-1
7-2	Modifying the Project Model: Exterior Elevations	7-7
7-3	Creating & Viewing Parametric Interior Elevations	7-11
7-4	Modifying the Project Model: Interior Elevations	7-15
7-5	Adding Mullions to a Curtainwall	7-17
7-6	Design Options	7-23
	<i>Self-Exam &amp; Review Questions</i>	

<b>8. Office Building: SECTIONS and DETAILS</b>	
8-1 Specify Section Cutting Plane in Plan View	8-1
8-2 Modifying the Project Model in Section View	8-6
8-3 Wall Sections	8-8
8-4 Annotations	8-12
8-5 Details	8-15
<i>Self-Exam &amp; Review Questions</i>	
<b>9. Office Building: INTERIOR DESIGN</b>	
9-1 Toilet Room Layouts	9-1
9-2 Cabinets	9-8
9-3 Furniture	9-13
9-4 Adding Guardrails	9-18
<i>Self-Exam &amp; Review Questions</i>	
<b>10. Office Building: SCHEDULES</b>	
10-1 Room & Door Tags	10-1
10-2 Generate a Door Schedule	10-5
10-3 Generate Room Finish Schedule	10-10
<i>Self-Exam &amp; Review Questions</i>	
<b>11. Office Building: SITE and RENDERING</b>	
11-1 Site Tools	11-1
11-2 Creating an Exterior Rendering	11-10
11-3 Rendering an Isometric in Section	11-22
11-4 Creating an Interior Rendering	11-27
11-5 Adding People to the Rendering	11-35
<i>Self-Exam &amp; Review Questions</i>	
<b>12. Office Building: CONSTRUCTION DOCUMENTS SET</b>	
12-1 Setting Up a Sheet	12-1
12-2 Sheet Index	12-12
12-3 Printing a Set of Drawings	12-16
<i>Self-Exam &amp; Review Questions</i>	
<b>13. Introduction to Revit Content Creation</b>	
13-1 Basic Family Concepts	13-1
13-2 The Box: Creating the Geometry	13-13
13-3 The Box: Adding Parameters	13-29
13-4 The Box: Formulas and Materials	13-45
13-5 The Box: Family Types and Categories	13-59
<i>Self-Exam &amp; Review Questions</i>	

**Appendix A – Autodesk Revit Architecture Certification Exam,  
Introduction and sample test**

**Appendix V – Introduction to Autodesk Vasari**

**Index**

---

## DVD Content

### 14. INTRODUCTION TO COMPUTERS - 50 pages

- 14-1 Computer Basics: Terms and Functions
  - 14-2 Overview of the Windows User Interface
  - 14-3 File Management Introduction
  - 14-4 File Management Exercises
- Self-Exam & Review Questions*

### 15. INTRODUCTION TO SKETCHUP - 78 pages

- 15-1 What is Google SketchUp used for?
- 15-2 Overview of the SketchUp User Interface
- 15-3 Open, Save and Close
- 15-4 Viewing SketchUp Models
- 15-5 Help System
- 15-6 The Basic Entities
- 15-7 Beginning with the Basics – 2D Sketching
- 15-8 3D Modeling
- 15-9 Adding Materials

### Appendix B – ROOF STUDY WORKBOOK – DRAFT EDITION - 89 pages

### Appendix C – FINDING MISSING ELEMENTS IN REVIT - 22 pages

#### Videos

1. User Interface
2. Walls
3. Doors and Windows
4. Stairs
5. Roofs
6. Floors
7. Ceilings
8. Elevations
9. Sections
10. Schedules
11. Rendering
12. Design Options
13. Sheets and Sheet Lists
14. Worksharing Introduction