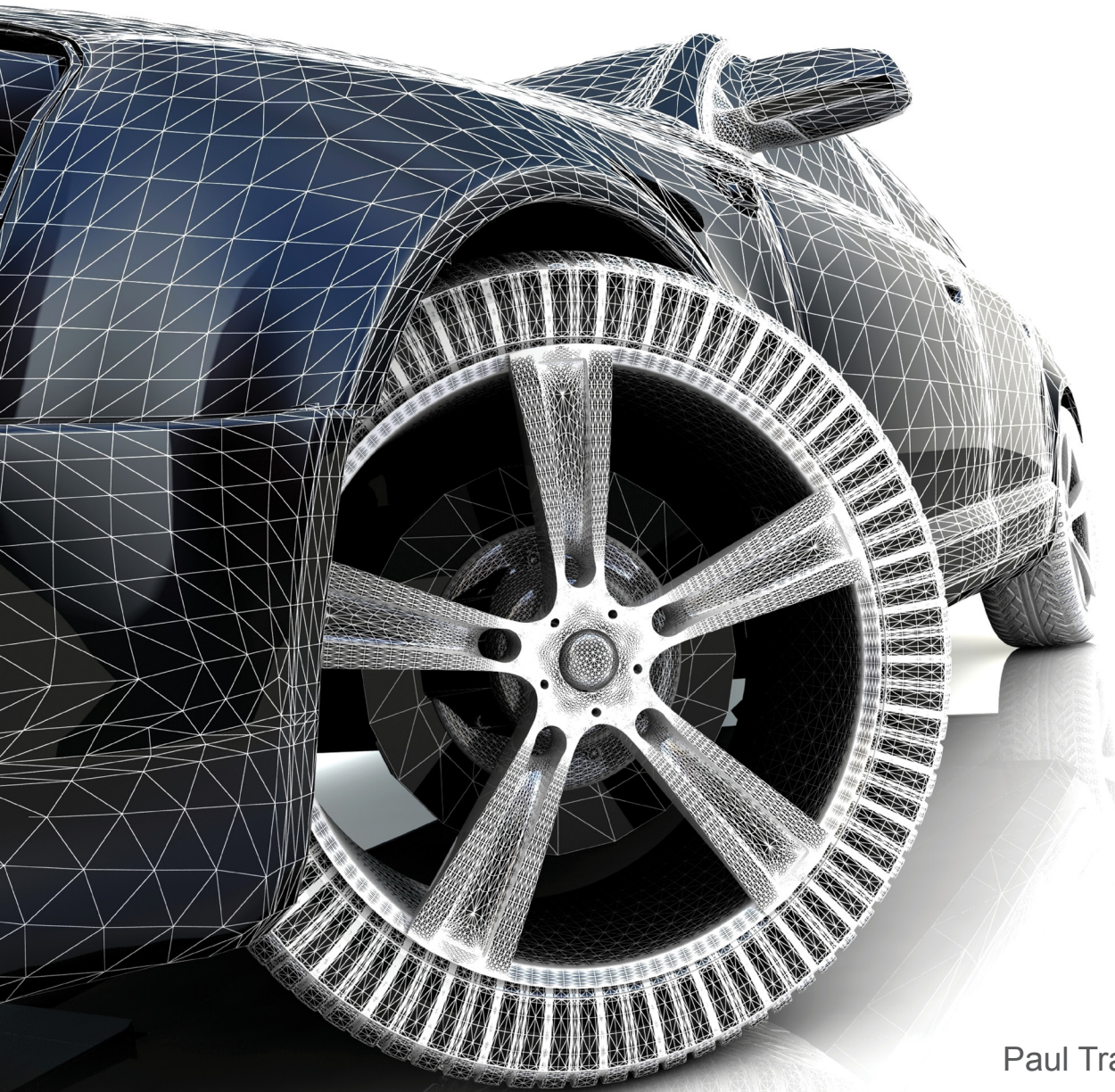


# CSWE - Certified SolidWorks® Expert Preparation Materials

SolidWorks 2010 - 2013



Paul Tran, CSWE, CSWI

Visit the following websites to learn more about this book:



[amazon.com](https://www.amazon.com)

[BARNES & NOBLE](https://www.barnesandnoble.com)

[Google books](https://books.google.com)

## Table of Content

# Table of Contents

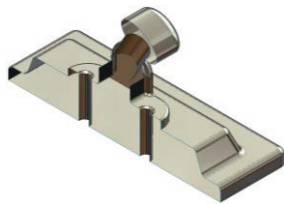
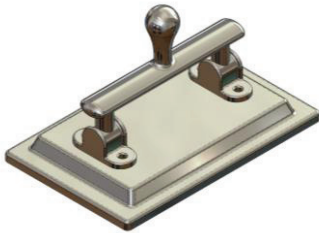
---

Copyrights Notices  
Disclaimer  
Trademarks

### Introduction:

Are you the next CSWE?

### Chapter 1:



### Surface Modifications

1-1

Chapter summary

1-1

Tools needed

1-2

Opening a part document

1-3

Working with Surfaces

1-3

Deleting the faces

1-3

Measuring the angle

1-4

Rotating the handle

1-5

Recreating the surfaces

1-6

Hiding a solid body

1-8

Trimming the surfaces

1-9

Showing a surface body

1-10

Knitting all surface bodies

1-10

Creating a section view

1-11

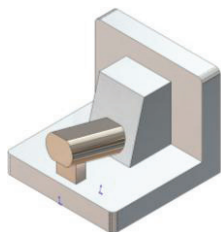
Measuring the mass

1-11

Exercise: Surface Modifications

1-13

### Chapter 2:



### Assembly Modifications

2-1

Chapter summary

2-1

Tools needed

2-2

Opening an assembly document

2-3

Editing the first component

2-3

Adding Draft

2-4

Viewing the draft results

2-5

Editing the second component

2-6

Replacing a plane

2-6

Repairing the sketch errors

2-7

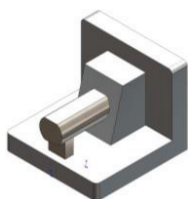
Correcting the end condition

2-8

Exiting the edit component mode

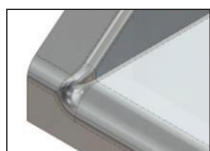
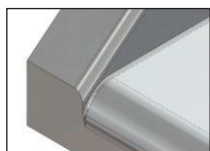
2-9

## Table of Contents



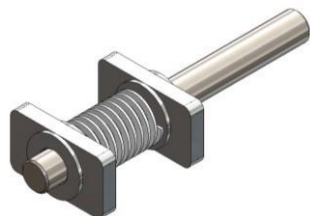
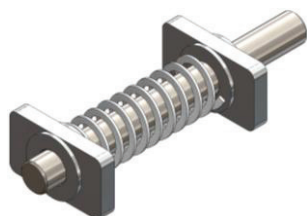
Measuring the center of mass	2-10
Exercise: Using manual drafts	2-11

### Chapter 3:



<b>The Order of Fillets</b>	<b>3-1</b>
Chapter summary	3-1
Tools needed	3-2
Opening a part document	3-3
Comparing the fillet results	3-3
Planning the order of fillets	3-4
Adding the face fillet	3-4
Creating the constant fillet	3-5
Adding another constant fillet	3-6
Measuring the mass	3-6
Exercise: Fillet Options	3-7

### Chapter 4:



<b>Flat Spring Assembly</b>	<b>4-1</b>
Chapter summary	4-1
Tools needed	4-2
Starting a new part template	4-3
Creating the helix - the sweep path	4-3
Creating the sweep profile	4-4
Adding the pierce relation	4-5
Creating the swept feature	4-5
Creating an axis	4-6
Opening an assembly document	4-7
Inserting the part into an assembly	4-7
Showing the axis	4-7
Adding mates	4-8
Checking the degrees of freedom	4-8
Adding coincident mates	4-9
Applying dimension changes	4-11
Viewing the results	4-12
Calculating the center of mass	4-12
Exercise: Spring Assembly	4-13

### Chapter 5:

<b>Part Modifications</b>	<b>5-1</b>
Chapter summary	5-1
Tools needed	5-2
Opening a part document	5-3



## Table of Contents



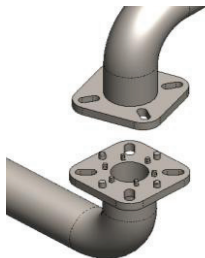
Modifying the model	5-3
Converting the outline of a feature	5-3
Deleting the on-edge relations	5-4
Removing the raised feature	5-5
Creating a cut	5-5
Recreating the sweep path	5-6
Using projected curve	5-6
Creating the sweep profile	5-7
Adding the pierce relation	5-7
Creating a swept feature	5-8
Calculating the mass	5-9
Exercise: Part modifications	5-11

### Chapter 6:



<b>Replacing External References</b>	<b>6-1</b>
Chapter summary	6-1
Tools needed	6-2
Opening an assembly document	6-3
Examining the existing mates	6-3
Suppressing the in-place mate	6-4
Adding a concentric mate	6-4
Editing a component	6-5
Replacing the sketch plane	6-5
Viewing the external ref. symbols	6-6
Exiting the edit component mode	6-6
Adding new mates	6-7
Adding a concentric mate	6-7
Adding a distance mate	6-7
Measuring the center of mass	6-8
Exercise: Replacing External References	6-9

### Chapter 7:



<b>Working with Multibody Parts</b>	<b>7-1</b>
Chapter summary	7-1
Tools needed	7-2
Opening an assembly document	7-3
Switching to the part level	7-4
Editing a feature	7-4
Using Move / Copy / Constraint	7-5
Adding mates	7-6
Changing the display option	7-6
Using the combine command	7-7

## Table of Contents



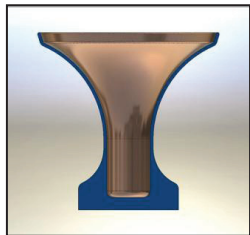
Using combine add	7-7
Switching back to assembly	7-8
Rebuilding the assembly	7-9
Measuring the center of mass	7-9
Exercise: Combining Multibodies	7-11

### Chapter 8:



<b>Creating a Curved Spring</b>	<b>8-1</b>
Chapter summary	8-1
Tools needed	8-2
Starting a new part template	8-3
Creating the sweep path	8-3
Creating the sweep profile	8-4
Creating a swept feature	8-4
Setting the twist type	8-5
Entering the number of turns	8-5
Assigning the material	8-5
Calculating the final mass	8-6
Exercise: Circular Spring - Expanded	8-7

### Chapter 9:

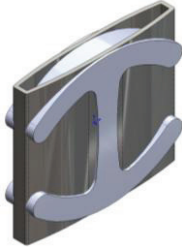


<b>Working with Sketch Pictures</b>	<b>9-1</b>
Chapter summary	9-1
Tools needed	9-2
Creating a layout sketch	9-3
Inserting the picture	9-4
Locating the picture	9-4
Scaling the picture	9-5
Tracing the picture	9-5
Creating the offset entities	9-7
Closing the traced sketch	9-7
Adding the sketch fillets	9-8
Adding the revolved centerline	9-9
Revolving the sketch profile	9-10
Measuring the mass of the part	9-10
Exercise: Sketch picture - Eagle head	9-11

### Chapter 10:

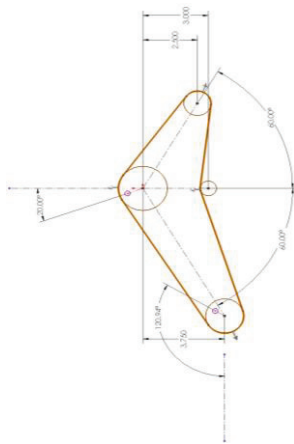
<b>Using Cut with Surface</b>	<b>10-1</b>
Chapter summary	10-1
Tools needed	10-2
Opening an assembly document	10-3
Editing a component	10-3

## Table of Contents



Creating a surface offset	10-4
Creating a surface cut	10-5
Flipping the cut direction	10-5
Hiding a component	10-6
Hiding a surface	10-6
Adding fillets	10-6
Exiting the edit component mode	10-8
Calculating the mass	10-8
Exercise: Cut with Surface	10-9

## Chapter 11:



<b>Using Belt Chain</b>	<b>11-1</b>
Chapter summary	11-1
Tools needed	11-2
Starting a new part template	11-3
Creating the main sketch	11-3
Making the blocks	11-4
Creating a belt chain	11-5
Entering the belt length	11-6
Adding the driving angular dimension	11-7
Adding a reference dimension	11-7
Applying dimension changes	11-8
Checking the new belt length	11-9
Changing the pulley's angle	11-9
Entering the new belt length	11-10
Exercise: Creating a belt chain	<b>11-11</b>

## Glossary

## Index

## SolidWorks Quick-Guides:

Quick Reference Guide to SolidWorks Command Icons and Toolbars.