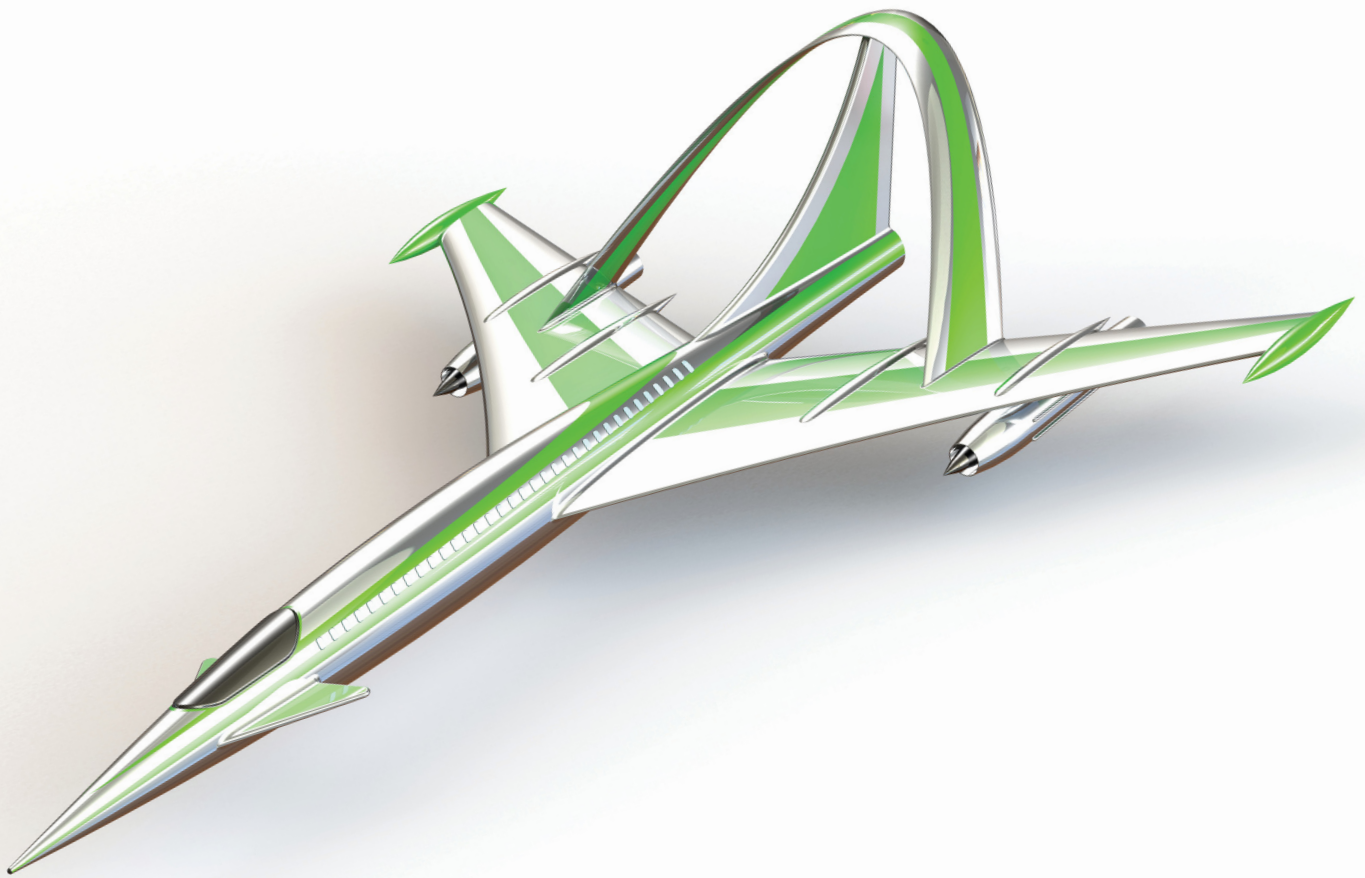


SolidWorks® 2013

Part I - Basic Tools

Parts, Assemblies and Drawings



Paul Tran CSWE, CSWI



Visit the following websites to learn more about this book:



[amazon.com](https://www.amazon.com)

[BARNES & NOBLE](https://www.barnesandnoble.com)

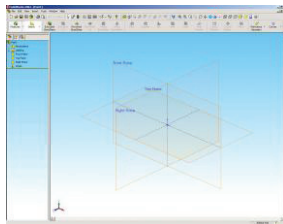
[Google books](https://books.google.com)

Table of Contents

Table of Contents

Copyrights Notices
Disclaimer
Trademarks

Introduction:

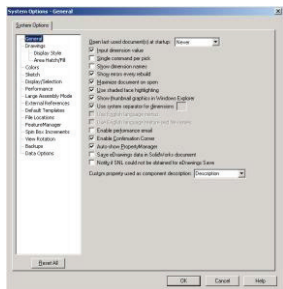


SolidWorks 2013 User Interface

The 3 references planes	XXII
The toolbars	XXIII
The system feedback symbols	XXV
The status bar	XXV
2D sketch examples	XXVI
3D feature examples	XXVII

Setting the System Parameters

Chapter 1:



The system settings

The system options	1-1
The general options	1-2
The drawings options	1-2
The display type options	1-3
The area hatch options	1-3
The colors options	1-4
The sketch options	1-4
The relations / snaps options	1-5
The display / selection options	1-5
The performance options	1-6
The large assembly mode options	1-6
The external references options	1-7
The default templates options	1-7
The file location options	1-8
The feature manager options	1-8
The spin box increment options	1-9
The view rotation options	1-9
The backups / recover options	1-10
The hole wizards / toolbox options	1-10

Table of Contents

The file explorer options	1-11
The search options	1-12
The collaboration / advanced option	1-13
Questions for review	1-14

Chapter 2:

Document Templates

Document properties	2-1
The drafting standard options	2-2
The annotations options	2-2
The balloon options	2-3
The datum options	2-3
The geometric tolerance options	2-4
The note options	2-4
The surface finish options	2-5
The weld symbol options	2-5
The dimensions options	2-6
The angle options	2-6
The arc length options	2-7
The chamfer options	2-7
The diameter options	2-8
The hole callout options	2-8
The linear options	2-9
The ordinate options	2-9
The radius options	2-10
The virtual sharp options	2-10
The table options	2-11
The bill of material options	2-11
The detailing options	2-12
The grid / snap options	2-12
The units options	2-13
The model display options	2-13
The material properties options	2-14
The image quality	2-14
The sheet metal options	2-15
The plane display options	2-15
The dimXpert options	2-16
The size dimension options	2-16
The location dimension	2-17
The chain dimension options	2-17
The geometric tolerance	2-18
The chamfer controls options	2-18
The display options	2-19

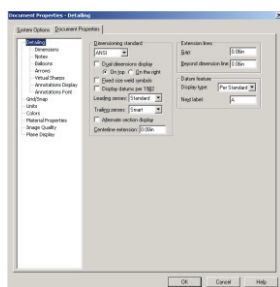
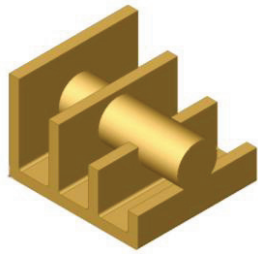


Table of Contents

Saving the document template settings	2-19
Questions for review	2-20

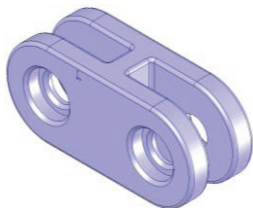
Basic Modeling Topics

Chapter 3:



Basic Solid Modeling – Extrude Options	3-1
Tools needed	3-2
Starting a new part	3-3
Changing the background color	3-4
Starting a new sketch	3-5
Using the line command	3-6
Adding geometric relation or constraints	3-7
Geometric relation examples	3-9
Adding dimensions	3-10
The status of a sketch	3-11
Hiding the sketch relation symbols	3-12
Extruding the base	3-13
Sketching on a planar face	3-14
Exploring the different extrude options	3-15
Extruding with blind	3-16
Extruding with through all	3-16
Extruding with up to next	3-16
Extruding with up to vertex	3-17
Extruding with up to surface	3-17
Extruding with offset from surface	3-17
Extruding with up to body	3-18
Extruding with mid-plane	3-18
Extrude summary	3-19
Adding fillets	3-20
Fillets and rounds	3-21
Questions for review	3-22
Exercise: Extrude Boss & Extrude Cuts	3-23

Chapter 4:



Basic Solid Modeling – Extrude and Revolve	4-1
Tools needed	4-2
Sketching the first profile	4-3
Extruding the first solid	4-3
Waking up the entities	4-4
Cutting the bore holes	4-5
Using mirror	4-6

Table of Contents

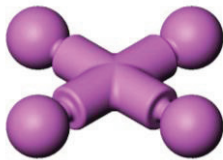


Adding fillets	4-8
Creating the sub-components	4-10
Revolving the base	4-10
Adding chamfers	4-11
Using the straight slot command	4-14
Create a blind cut	4-16
Adding holes	4-17
Adding more fillets	4-18
Questions for review	4-20
Exercise: Extrude Boss and Extrude Cut	4-21

Chapter 5:



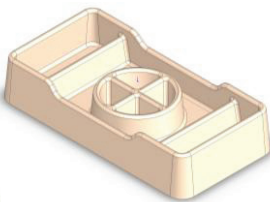
Revolve Parts – Ball Joint Arm	5-1
Tools needed	5-2
Creating the base profile	5-3
Trimming the entities	5-3
Revolving the base	5-3
Sketching the open-end profile	5-4
Mirroring a features	5-6
Adding fillets	5-7
Questions for review	5-8
Exercise: Flat head Screw Driver	5-9



Derived Sketches – Center Ball Joint	5-12
Tools needed	5-13
Creating the base profile	5-14
Revolving the base	5-14
Creating a new plane	5-15
Making a derived sketch	5-15
Positioning the derived sketch	5-16
Adding fillets	5-17
Questions for review	5-18
Exercise: Revolve Parts	5-19
Exercise: Modeling a plastic bottle	5-21



Chapter 6:



Rib & Shell Features – Formed Tray	6-1
Tools needed	6-2
Sketching the base profile	6-3
Extruding the base	6-3
Creating the side cutout	6-4
Offsetting the entities	6-5
Shelling the upper half of the part	6-5
Adding rib features	6-6

Table of Contents

Adding fillets	6-7
Shelling the lower half of the part	6-8
Questions for review	6-9

Using Shell and Mirror 6-10

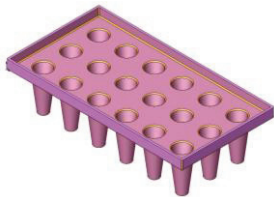
Tools needed	6-11
Starting a new part	6-12
Extruding the base	6-12
Adding fillets	6-13
Creating a recess feature	6-14
Creating the rim feature	6-16
Creating the fold feature	6-17
Mirroring the body	6-18
Creating the lock feature	6-19
Shelling the part	6-22



Chapter 7:

Linear Patterns – Test Tray 7-1

Tools needed	7-2
Sketching the base profile	7-3
Extruding the base feature	7-3
Creating the seed feature	7-4
Creating a linear pattern	7-5
Shelling the part	7-6
Adding fillets	7-7
Questions for review	7-8



Circular Patterns – Spur Gear 7-9

Tools needed	7-10
Creating the base sketch	7-11
Using dynamic mirror	7-11
Adding relations	7-12
Canceling auto-relations	7-12
Revolving the base	7-13
Sketching the thread profile	7-14
Using convert entities	7-15
Using trim entities	7-16
Enabling the temporary axis	7-17
Making a circular pattern of the cut	7-18
Adding the key-way	7-19

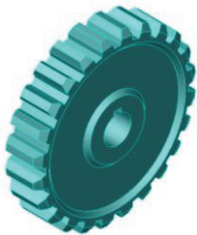
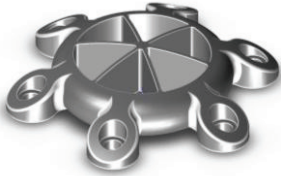
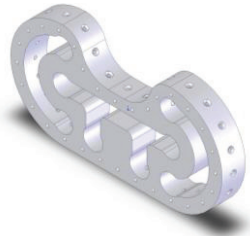


Table of Contents

Using sketch mirror	7-20
Questions for review	7-22

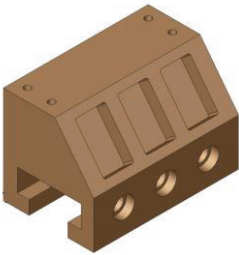


Circular Patterns – Circular Base Mount	7-23
Tools needed	7-24
Sketching the base profile	7-25
Revolving the base	7-25
Adding a side tab	7-26
Creating the first counterbore	7-27
Adding a circular pattern	7-28
Creating a new offset plane	7-28
Adding the pockets	7-29
Adding fillets	7-30
Questions for review	7-32



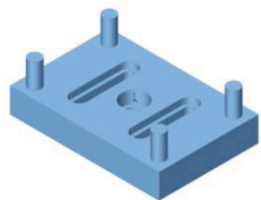
Curve Driven Patterns & Hole Wizard	7-33
Tools needed	7-34
Editing the sketch	7-35
Extruding the base	7-36
Creating the first hole	7-36
Constructing the Curve	7-37
Creating the Curve-Driven Pattern	7-38
Using the hole wizard	7-39
Using the curve driven pattern options	7-40

Chapter 8:

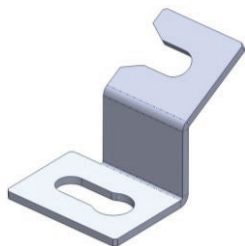


Part Configurations – Machined Block	8-1
Tools needed	8-2
Sketching the Base profile	8-3
Adding the ordinate dimensions	8-3
Extruding the Base	8-3
Adding the pockets	8-4
Adding a counterbore hole	8-5
Patterning the counterbore	8-6
Mirroring features	8-7
Adding the blind holes	8-8
Creating a cutaway section configuration	8-9
Switching between the configurations	8-12
Questions for Review	8-13
Exercise: Vary-Sketch Option	8-14
Contour Selection	8-15
Using the Contour Selection	8-16

Table of Contents



Opening the main sketch	8-18
Extruding the base	8-19
Using the contour selection tool	8-20
Hiding the sketch	8-28
Questions for review	8-29
Exercise: Contour Selection	8-30



Understanding and repairing errors	8-32
Error symbols and description	8-32
Error colors	8-32
Reading the error messages in what's wrong box	8-33
Viewing error messages from the Feature tree	8-33
Using display / delete relations	8-34
Replacing relations	8-35
Re-attaching dimensions	8-36
Setting over defined / not solved options	8-38
The status of the FeatureManager tree	8-39

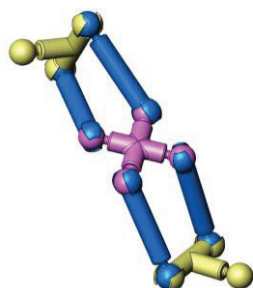
Chapter 9:



Modeling Threads – Threaded Insert	9-1
Tools needed	9-2
Sketching the base profile	9-3
Revolving the base	9-3
Creating the sweep path	9-4
Defining the helix	9-4
Creating the sweep profile	9-5
Creating the sweep cut	9-6
Mirroring the bodies	9-7
Adding chamfers	9-9
Questions for review	9-10
Exercise: Modeling threads - Internal	9-11
Exercise: Internal threads	9-15
Exercise: External threads	9-23

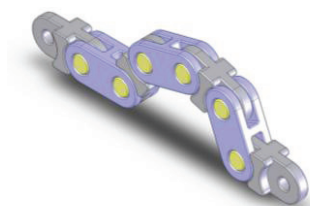


Chapter 10:



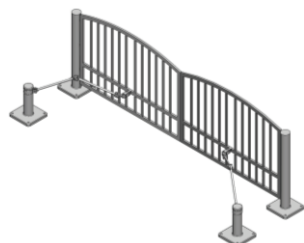
Bottom Up Assembly – Ball Joint Assembly	10-1
Tools needed	10-2
Starting a new assembly	10-3
Inserting the components	10-4
Mating the components	10-6
Moving / rotating components	10-7
Adding more components	10-7
Questions for review	10-11

Table of Contents



Bottom Up Assembly – Links Assembly

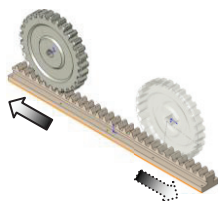
Tools needed	10-12
Starting a new assembly templates	10-13
Inserting the first component	10-14
Adding other components	10-15
Changing the components colors	10-16
Using the selection filters	10-17
Adding standard mates	10-18
Adding width mates	10-19
Making copies of components	10-20
Viewing the mate group	10-21
Rotating components	10-22
Using align vs. anti-align	10-23
Questions for review	10-24
Assembly Exercises: Gate Assembly	10-29



Chapter 11:

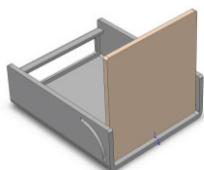
Using Advanced Mates

Rack and pinion mate	11-1
Adding mates	11-1
Suppressing mates	11-2
Using Mechanical Mates	11-3
Adding a rack and pinion mate	11-3
Testing the mates	11-4
Creating a linear motion	11-5
Adding a linear motor	11-5
Playing back the motion	11-6



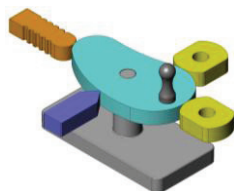
Using Limit Mates and Cam Mates

Opening an assembly document	11-7
Adding advanced and mechanical mates	11-7
Adding a width mate	11-8
Adding a cam mate	11-8
Adding a limit mate	11-9
Testing the mates	11-12



Using Cam Followers

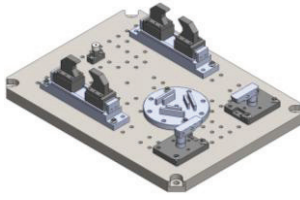
Opening and arranging the components	11-15
Adding the standard mates	11-15
Adding the mechanical mates - Cam follower	11-16
Viewing the cam motions	11-17



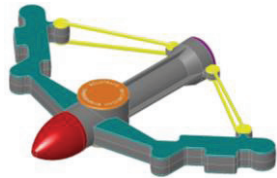
Using Smart Mates

11-19

Table of Contents

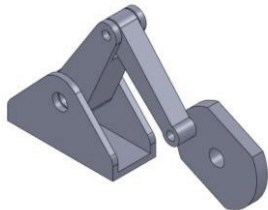


Fixture Assembly	11-20
Opening an assembly document	10-21
Exploring the smart mate options	11-22
Adding smart mates	11-23
Adding smart mates concentric & coincident	11-24
mating other components	11-26
Checking the status of the components	11-27
Creating instances of the bolt	11-28
Mating the bolts	11-29

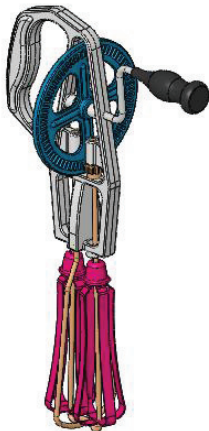


L1 Final Exam	10-37
----------------------	--------------

Chapter 12:



Layout Assembly	12-1
Tools Needed	12-2
Opening an assembly document	12-3
Activating the layout mode	12-3
Adding a new sketch	12-4
Making a block	12-4
Setting the insertion point	12-5
Adding relations to the block	12-5
Adding dimensions to the blocks	12-6
Testing the block	12-7
Converting a block into a component	12-8
Converting other blocks	12-11
Hiding the sketches	12-14
Viewing the assembly motions	12-14



SolidWorks Animator – The Basics	12-15
Switching to the Motion Study tab	12-15
Adding a rotary motor	12-16
Viewing the rotary motions	12-16
Using the animation wizard	12-17
Animating the explode / collapse	12-18
Changing the view orientation	12-21
Creating the flashing	12-25
Changing the shading options	12-27
Looping the animation	12-28
Saving as AVI format	12-29
Viewing with Windows Media Player	12-30

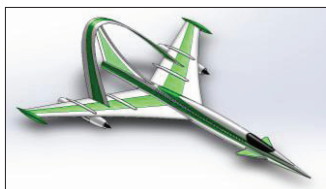
Chapter 13:

Working with Sketch Pictures	13-1
Tools needed	13-2

Table of Contents



Inserting the scanned image	13-3
Resizing the digital image	13-4
Tracing the image	13-5
Using the spline tool	13-5
Suppressing the scanned image	13-7
Extruding the traced sketch	13-8



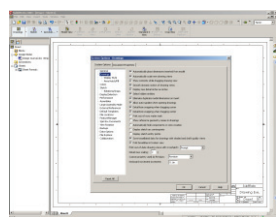
Using PhotoView360 – The Basics	13-11
Activating the add-in	13-11
Setting the appearance	13-12
Setting the scene	13-13
Setting the image quality	13-14
Rendering the final image	13-15
Saving the rendered image	13-16



Drawing Topics

Chapter 14:

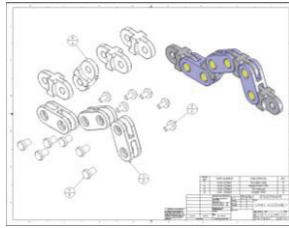
Drawing Preparations	14-1
Tools needed	14-2
Setting up new drawing	14-3
The drawing interface	14-4
Switching to the sheet format layer	14-5
Switching to the sheet layer	14-6
Setting the drawing options	14-7
Setting the document template options	14-8
Setting the drafting standard options	14-8
Setting the annotation option	14-8
Setting the dimension options	14-9
Setting the centerline / center mark options	14-9
Setting the bill of material options	14-10
Setting the view label options	14-11
Setting the unit options	14-12
Setting the line font options	14-13
Setting the line thickness options	14-13
Setting the image quality options	14-14
Saving the drawing templates	14-15
Questions for review	14-16



Chapter 15:

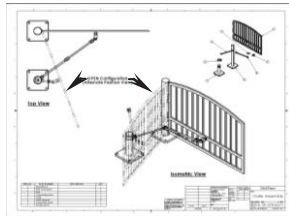
Assembly Drawings – Links Assembly	15-1
Tools needed	15-2
Creating a new drawing format	15-3

Table of Contents



Editing the format / title block	15-5
Editing the sheet layer	15-6
Changing the drawing paper color	15-6
Browsing the documents	15-7
Switching to an exploded view	15-9
Creating the isometric views	15-11
Setting the custom scale to drawing views	15-12
Changing to the shaded view	15-12
Inserting the bill of material (BOM)	15-13
Modifying the bill of material	15-15
Reversing the column headers	15-16
Adding balloons	15-17
Using circular split line balloons	15-18
Questions for review	15-19
Assembly Drawing Exercises	15-20

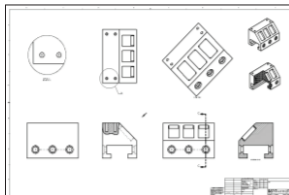
Assembly Drawing – Alternate Position View 15-23



Tools needed	15-24
Setting up a new drawing	15-25
Setting the custom view scale	15-27
Creating an alternate position view	15-28
Switching configurations	15-30
Adding custom text / annotation	15-31
Creating the isometric exploded view	15-32
Using auto balloons	15-33
Adding a bill of material	15-34
Questions for review	15-35

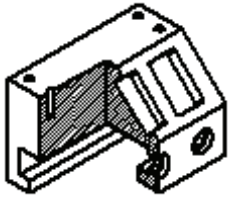
Chapter 16:

Drawing Views – Machined Block 16-1



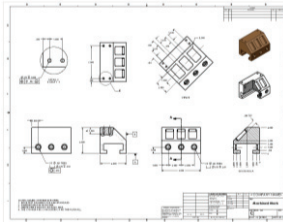
Tools needed	16-2
Setting up a new drawing format	16-3
Editing the format / title block	16-4
Modifying existing text	16-6
Adding new text	16-6
Using the view Palette	16-7
Dragging and dropping from the view Palette	16-8
Adding an isometric views	16-9
Moving the drawing views	16-10
Breaking the alignment of the views	16-11
Creating a detail views	16-12
Using the detail view options	16-12
Adding a projected views	16-13

Table of Contents



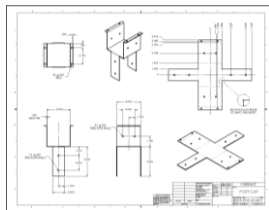
Creating an auxiliary views	16-14
Adding a cross section views	16-15
Showing / hiding the hidden lines	16-16
Creating the broken-out-section views	16-16
Changing configurations	16-18
Adding cross hatch and hatch patterns	16-19
Modifying the cross hatch properties	16-20
Using geometric tolerances and flag notes	16-22
Using the modifying and hole symbols	16-23
ANSI symbols description	16-24

Chapter 17:



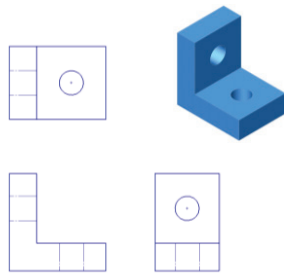
Detailing – Machined Block Details	17-1
Tools needed	17-2
Inserting the model dimensions	17-3
Re-arranging the dimensions	17-4
Adding center marks	17-6
Adding datum feature symbols	17-7
Datum reference & geometric tolerance examples	17-8
Using the hole callouts	17-9
Adding the geometric tolerances	17-10
Adding tolerances / precisions	17-12
Adding surface finishes	17-15
Adding notes	17-16
Changing the document fonts	17-17
Questions for review	17-19
Exercise 1: Modeling and Detailing	17-20
Exercise 2: Drawing & Detailing	17-21
Fastener Callouts	17-22
Thread Nomenclature	17-23

Chapter 18:

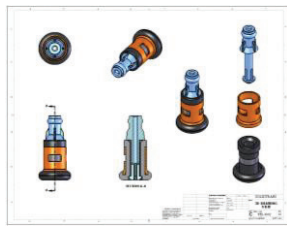


Sheet Metal Drawings – Post Cap	18-1
Tools needed	18-2
Starting a new drawing	18-3
Inserting the 3 standard views	18-4
Creating the isometric and flat pattern views	18-5
Adding a detail view	18-6
Adding the ordinate dimensions	18-7
Inserting the model dimensions	18-7
Adding dimensions to other views	18-8
Creating an isometric flat pattern	18-9
Showing the bend lines	18-10

Table of Contents

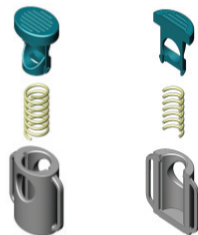


2D to 3D - Convert AutoCAD into SolidWorks	18-11
Tools needed	18-12
Importing an AutoCAD drawing into SolidWorks	18-13
Importing options for DXF / DWG	18-14
The 2D to 3D toolbar	18-15
Converting the sketches	18-16
Aligning the views	18-19
Creating the base extrude	18-20
Converting the cut features	18-22
Hiding the sketches	18-25
Questions for review	18-27
Exercise: Modeling and Detailing	18-28



e-Drawings – Soft Lock Assembly	18-29
Tools needed	18-30
Saving a SolidWorks drawing as an eDrawing	18-31
The eDrawing user interface	18-32
The eDrawing toolbar	18-33
The markup toolbar	18-34
Playing the animation	18-34
Adding markup notes	18-35
Adding a stamp	18-36
Saving as a self executable file type	18-37
3D drawing view	18-38
Creating a new 3D drawing View	18-39
Saving the drawing view state	18-39
Inserting a model view	18-40

Chapter 19:



Configurations Part I: – Button Assembly	19-1
Tools needed	19-2
Part Configurations	19-3
Changing the pitch of the spring	19-4
Assembly configurations	19-5
Changing the mate conditions	19-6
Drawing configurations	19-7
Switching the configurations	19-8



Configurations Part II: Assembly & Drawing	19-9
Tools needed	19-10
Opening the existing file	19-11
Adding new part configurations	19-11
Changing the number of spokes	19-12

Table of Contents



Viewing the part configurations	19-13
Assembly configurations	19-14
Inserting the Sub-Assemblies	19-16
Adding mates to the sub-assembly	19-17
Viewing the assembly configurations	19-19
Starting a new drawing	19-20
Creating the drawing views	19-21
Creating an aligned section view	19-22
Changing the configurations in a drawing	19-25
Adding the annotations in a drawing	19-25

Chapter 20:



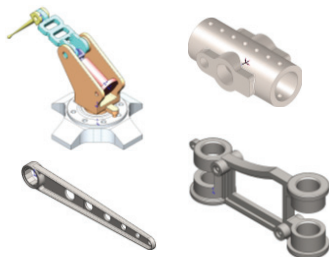
Part –Design Tables	20-1
Tools needed	20-2
Part – design tables	20-3
Opening the an existing part	20-3
Inserting a new design table	20-4
Transferring dimensions to the design table	20-5
Using the excel-based formulas	20-5
Inserting features into the design table	20-7
Entering the suppress / un-suppress commands	20-8
Viewing the configs. generated by the design table	20-8



Assembly – Design Tables	20-9
Opening an assembly document	20-9
Creating a new assembly design table	20-10
Setting the headers alignment	20-10
Defining the column headers	20-11
Entering the excel-based parameters	20-13
Viewing the configs. generated by the design table	20-14
Exercise: Part design tables	20-15

Level 2 final exam	20-19
Table of U.S Measures	20-21
Table of U.S Measures	20-22

CSWP-Core Preparation Practice



Preparation materials for the CSWP-Core examination	21-1
Part modeling and modifications	21-2
Configurations and design tables	21-22
Part modifications and repair errors	21-28
Bottom up assembly	21-37

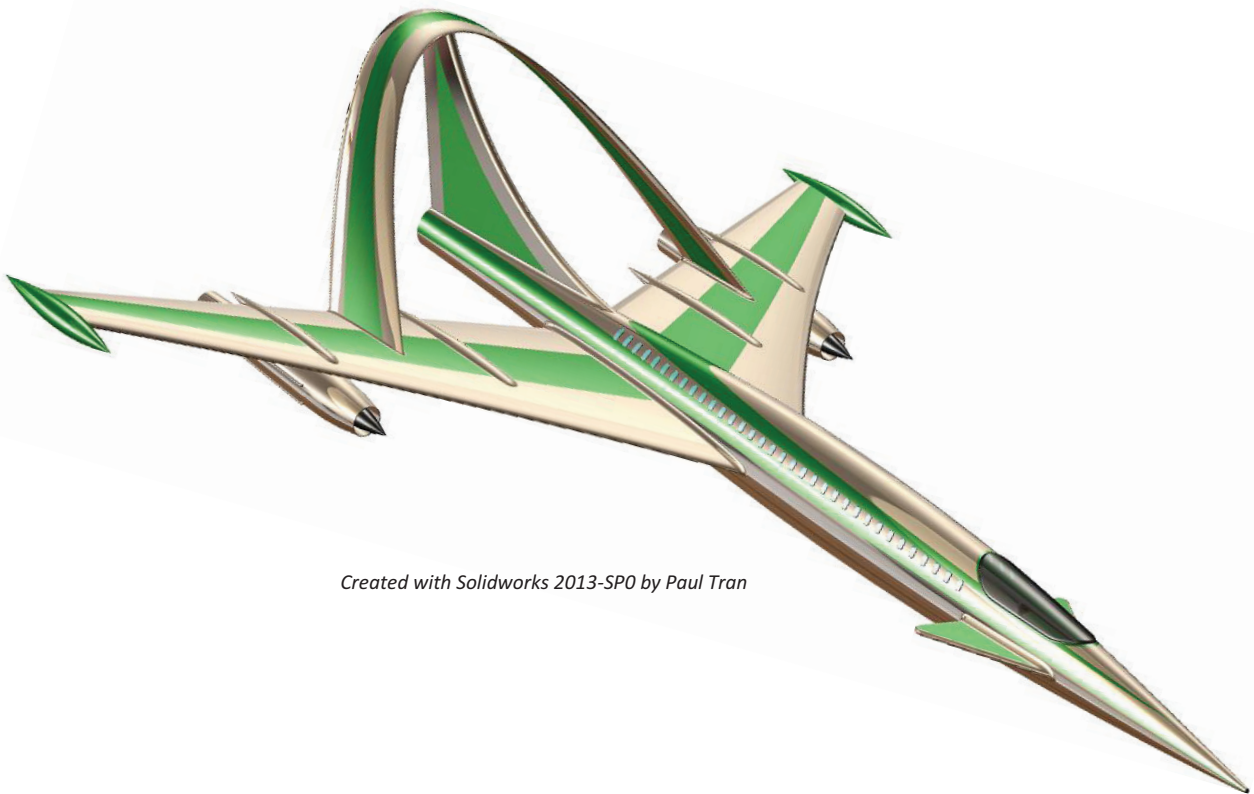
Introduction

Glossary

Index

SolidWorks 2013 Quick-Guides:

Quick Reference Guide to SolidWorks 2013 Command Icons
and Toolbars.



Created with Solidworks 2013-SP0 by Paul Tran