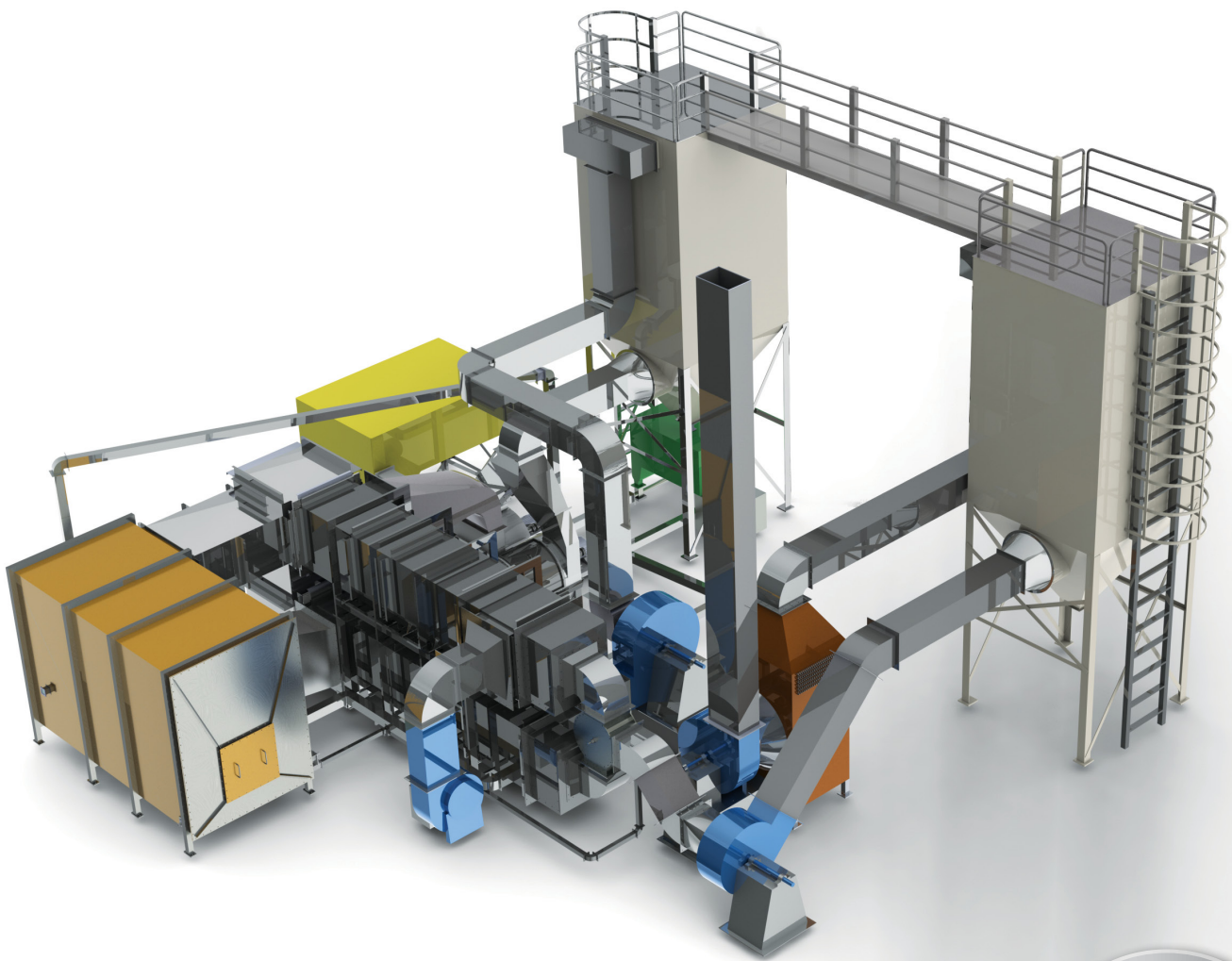


SolidWorks® 2013

Part II - Advanced Techniques

Parts, Surfaces, Sheet Metal, SimulationXpress,
Top-Down Assemblies, Core and Cavity Molds



Paul Tran CSWE, CSWI



Visit the following websites to learn more about this book:



[amazon.com](https://www.amazon.com)

[BARNES & NOBLE](https://www.barnesandnoble.com)

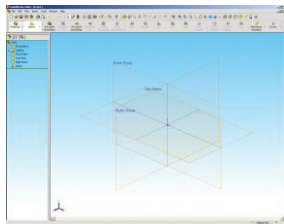
[Google books](https://books.google.com)

Table of Contents

Table of Contents

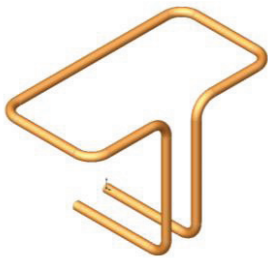
Copyrights Notices
Disclaimer
Trademarks

Introduction:	SolidWorks 2013 User Interface	XIX
	The 3 references planes	XX
	The toolbars	XX
	The system feedback symbols	XXII
	The status bar	XXII
	2D sketch examples	XXIII
	3D feature examples	XXIV



Advanced Modeling Topics

Chapter 1:	3D Sketch	1-1
	Tools needed	1-2
	Adding 3D lines	1-3
	Using the reference axis indicator	1-4
	Using the tab key	1-4
	Adding dimensions	1-5
	Adding the sketch fillets	1-6
	Creating the Sweep profile	1-7
	Making the swept feature	1-8
	Questions for review	1-9
	Exercise: Sweep with 3D Sketch	1-10
	Exercise: 3D Sketch & Planes	1-11
	Exercise: 3D Sketch & Composite Curves	1-18



Chapter 2:	Plane Creation	2-1
	Tools needed	2-2
	Sketching the base profile	2-3
	Creating a tangent plane	2-4
	Creating the flat surface	2-5
	Extruding with flip side to cut	2-6

Table of Contents



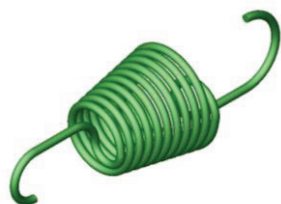
Creating a plane at angle	2-7
Showing a sketch	2-8
Creating a plane coincident	2-9
Creating a plane parallel	2-10
Creating a plane offset distance	2-12
Creating Plane perpendicular	2-13
Creating a circular patterns	2-15
Creating a Mid-Plane	2-17
Filleting all edges	2-19
Questions for review	2-20
Viewing the sections	2-21
Exercise: Create new work planes	2-22

Chapter 3:



Advanced Modeling – 5/8" Spanner	3-1
Tools needed	3-2
Opening the part document	3-3
Using min / max Arc conditions	3-4
Creating the transition body	3-4
Constructing a new work plane	3-6
Creating the close end	3-7
Making a hexagon cut	3-8
Adding a recess feature	3-9
Mirroring the recess	3-10
Adding fillets	3-11
Adding text	3-13
Extruding the text	3-14
Questions for review	3-17
Exercise: Circular text wraps	3-19

Chapter 4:



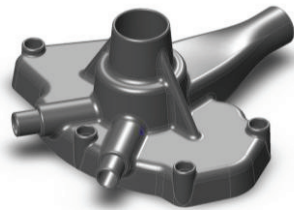
Sweep w/ Composite Curve – Helical Ext. Spring	4-1
Tools needed	4-2
Creating the Sweep path	4-3
Defining the Helix	4-3
Creating a plane at angle	4-4
Adding other Hook features	4-5
Creating a parallel plane	4-6
Combining sketches using Composite Curve	4-8
Creating Sweep profile	4-9
Creating the Base Sweep	4-9
Other Spring examples	4-10
Questions for review	4-11
Exercise: Circular Spring – Expanded	4-12

Table of Contents



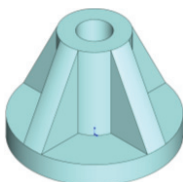
Sweep – Variable Pitch Spring, closed ends	4-15
Tools needed	4-16
Creating the base sketch	4-17
Creating a variable pitch helix	4-17
Sketching the sweep profile	4-18
Adding a pierce relation	4-18
Sweeping profile along path	4-19
Creating the flat ends	4-20
Questions for review	4-21
Exercise: Projected Curve & Composite Curve	4-22
Exercise: Using Curve Through Reference Points	4-27

Chapter 5:



Advanced Modeling – Sweep vs. Loft	5-1
Tools needed	5-2
Understanding the draft options	5-3
Opening the base	5-4
Creating the upper inlet port - revolve	5-5
Adding constant fillets	5-6
Creating an offset distance planes	5-7
Creating the outlet port - Loft	5-10
Adding the mounting bosses	5-11
Creating the rear inlet port	5-12
Adding face Fillets	5-13
Mirroring features	5-15
Shelling the part	5-16
Adding the ribs	5-17
Mirroring the ribs	5-18
Removing the sharp edges	5-19

Chapter 6:

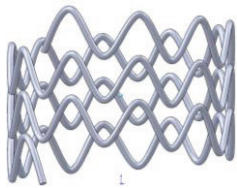
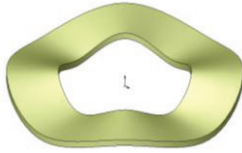


Loft – Water Meter Housing	6-1
Tools needed	6-2
Constructing the body	6-3
Creating an offset distance plane	6-5
Creating loft profiles / features	6-5
Constructing the Inlet / outlet profiles	6-6
Using split entities	6-6
Re-using the previous sketch	6-8
Constructing the centerline parameter	6-10
Creating the solid loft feature	6-11
Using the shell command	6-13
Adding the left / right brackets	6-14
Adding the seal ring	6-15

Table of Contents

Adding fillets /chamfers	6-18
Questions for review	6-19
Exercise: Loft	6-20

Chapter 7:



Loft with Guide Curves – Waved Washer	7-1
Tools needed	7-2
Adding the construction geometries	7-3
Creating a offset distance plane	7-4
Creating a derived sketches	7-5
Creating a curve through reference points	7-5
Constructing the loft sections	7-7
Creating the derived sketches	7-7
Creating the loft feature	7-10
Showing / hiding sketches	7-11
Questions for review	7-12
Exercise: V-Shape – 3 revolutions	7-13
 Deforming a solid	 7-21
Deform with curve-to-curve	7-21
Setting the anchor faces	7-22
Setting the stiffness	7-22
Deforming a surface	7-23
Deform with curve-to-curve	7-23
Setting the anchor edges	7-24
Mirroring a body	7-24
 Chapter 8: Surfaces – Lofted Surface	 8-1
Tools needed	8-2
Creating offset distance plane	8-3
Constructing the loft profiles	8-3
Creating the loft surface	8-6
Setting the start/end constraints	8-6
Splitting surfaces	8-7
Deleting surfaces	8-8
Thickening surfaces	8-9
Calculating the angle between faces	8-11
Adding a full round fillet	8-12
Sketching / extruding the slot contours	8-14
Questions for review	8-17

Table of Contents



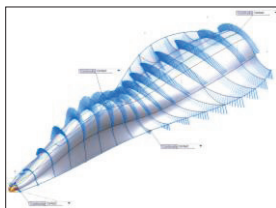
Lofted Surface – Remote Control Casing	8-19
Tools needed	8-20
Creating offset distance planes	8-21
Sketching the loft sections	8-22
Twisting the loft profiles	8-23
Creating the loft surface	8-24
Adding revolved surface	8-25
Copying / moving surfaces	8-26
Trimming surfaces	8-27
Hiding surfaces	8-27
Filling surfaces	8-28
Knitting surfaces	8-30
Adding fillets	8-31
Thickening surfaces	8-32
Removing the upper half	8-33
Creating the lower half	8-35
Questions for review	8-37
Exercise: Loft_Delete Face	8-38

Chapter 9:



Advanced Surfaces – Surface_Offset_Ruled	9-1
Tools needed	9-2
Using offset surface and rule surface	9-3
Creating the base loft	9-4
Using the splitting lines	9-5
Using offset surfaces	9-6
Using ruled surface	9-7
Using knit surfaces	9-8
Creating a cut with surface	9-10
Exercise: Advanced modeling with surfaces	9-13
Exercise: Advanced surfacing techniques	9-15

Chapter 10:



Using Filled Surfaces	10-1
Tools needed	10-2
Enabling the surfaces tool tab	10-3
Creating a planar surface	10-4
Creating a surface filled with tangent control	10-4
Creating a surface filled with curvature control	10-5
Knitting all surfaces	10-7
Creating a solid body	10-7
Questions for review	10-8

Creating a boundary and free-form feature	10-9
--	-------------

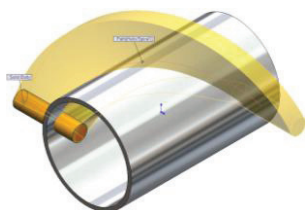
Table of Contents



Creating the 1st boundary surface	10-9
Creating the 1st boundary surface	10-12
Adding free-form curves	10-12
Adding free-form points	10-14
Dragging with the triad	10-16
Displaying the curvature comb	10-17

Sweep with Solid Body

10-19



Tools needed	10-20
Creating the main body	10-21
Creating an offset distance plane	10-22
Constructing the sweep path	10-23
Creating a plane normal to curve	10-23
Revolving the swept body	10-24
Creating the sweep cut with a solid body	10-25

Chapter 11:

Surfaces vs. Solid Modeling - Helmet

11-1



Tools needed	11-2
Constructing the body of Helmet – surface loft	11-3
Creating a perpendicular plane	11-4
Sketching the sweep profile	11-4
Sketching the sweep path	11-5
Adding a planar surface	11-5
Knitting the surfaces bodies	11-6
Thickening the surface Knit	11-7
Creating an extruded cut feature	11-8
Creating a revolve cut feature	11-9
Creating the Cut-out slot with draft	11-10
Creating a sweep cut	11-13
Adding fillets	11-13
Exercise: Advanced loft - Turbine Blades	11-15
Exercise: Advanced Sweep – Candle Holder	11-16



Using PhotoView 360

11-23

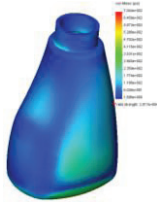
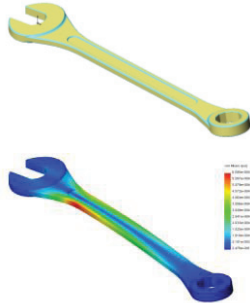


Activating the Add-Ins	11-23
Setting the appearance	11-24
Setting the scene	11-25
Setting the floor distance	11-26
Setting the illumination	11-26
Adjusting the render quality	11-27
Setting the image file type	11-27
Saving the final image	11-28

Table of Contents

L3 – Final Exam 11-29

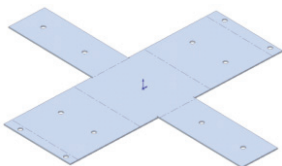
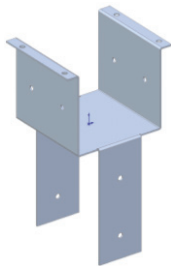
Chapter 12:



SimulationXpress – 5/8" Spanner	12-1
Tools needed	12-2
Starting SimulationXpress	12-3
Setting up the units	12-3
Adding a fixture	12-3
Adding load	12-6
Selecting material	12-7
Analyzing the model	12-8
Viewing the Results	12-9
Stress distribution	12-9
Displacement distribution	12-10
Factor of Safety (FOS)	12-10
HTML report	12-11
Viewing the report	12-13
eDrawings	12-15
Questions for review	12-19
Exercise: Apply load	12-20
Exercise: Apply pressure	12-21

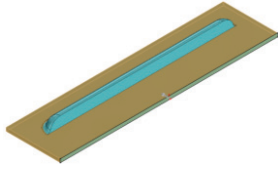
Sheet Metal Topics

Chapter 13:

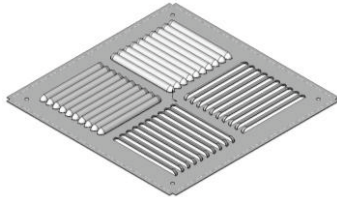


Sheet Metal – Post Cap	13-1
Tools needed	13-2
Creating the base sketch	13-3
Extruding with base Flange	13-3
Creating an edge Flange	13-4
Editing an edge Flange	13-5
Setting the auto-relief	13-5
Creating a sketch Bend	13-7
Adding holes in sheet metal parts	13-11
Making the pattern	13-13
Questions for review	13-14
 Sheet Metal - Vents	 13-15
Tools needed	13-16
Creating the base sketch	13-17
Extruding with base-flange	13-18
Using the miter flange options	13-19

Table of Contents



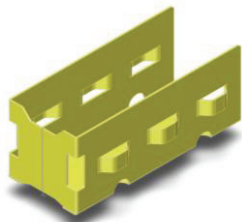
Creating a flat pattern	13-21
Creating a forming tool	13-22
The rectangle options	13-23
Revolve the form body	13-25
The position sketch	13-27
Save the forming tools	13-29
Applying the forming tools onto sheet metal part	13-30
Position the forming tool	13-31
Adding other sheet metal features	13-33
Creating a Linear pattern of the forming tools	13-34
Creating an axis	13-35
Creating Circular patterns	13-35
Questions for review	13-37



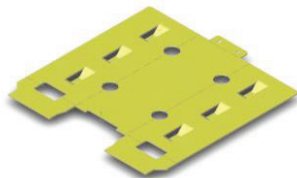
Chapter 14:



Forming Tools – Button w/Slots	14-1
Tools needed	14-2
Sketching the base	14-3
Revolving the base	14-4
Adding slots	14-5
Creating the split lines	14-7
Defining the stopping & removing faces	14-9
Saving in the design library	14-10
Questions for review	14-12



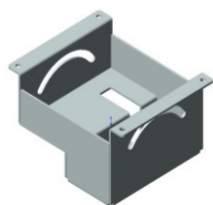
Sheet Metal – Mounting Tray	14-13
Tools needed	14-14
Creating the base flange	14-15
Adding an edge flange	14-16
Adding sheet metal cuts	14-17
Un-folding a sheet metal part	14-18
Folding the sheet metal part	14-20
Accessing the design library	14-23
Adding the bridge lance	14-24
Creating a linear pattern	14-26
Mirroring body	14-27
Sheet metal chamfers	14-30
Switching to the flat pattern	14-31
Questions for review	14-32



Chapter 15:

Sheet Metal Conversions	15-1
Tools needed	15-2
Importing an IGES file	15-3

Table of Contents



Using the rip command	15-4
Applying sheet metal parameters	15-5
Adding fillets	15-6
Creating a flat pattern	15-7
Questions for review	15-8



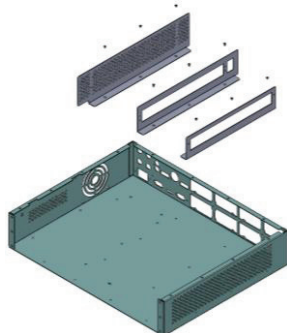
Flat Pattern Stent	15-9
Tools needed	15-10
Revolving the main body	15-11
Converting to sheet metal	15-12
Unfolding the sheet metal part	15-12
Sketching the 2D pattern	15-13
Creating the 2D linear pattern	15-14
Folding the sheet metal part	15-15
Creating a configuration	15-16
Adding fillets	15-16
Switching to flat pattern	15-17



Stent example - Sheet metal approach	15-19
Revolving the main body	15-19
Shelling the solid body	15-20
Creating an offset plane	15-21
Creating a rib feature	15-21
Patterning the rib feature	15-22
Creating a second rib	15-23
Patterning the second rib	15-23
Using the combine common	15-24
Transferring the part to an assembly	15-24
Creating a circular component pattern	15-25



Chapter 16:



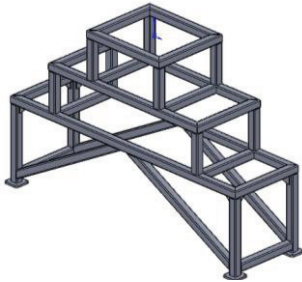
Working with Sheet Metal STEP files	16-1
Tools needed	16-2
Opening an assembly step file	16-3
Mating the components	16-4
Adding the sheet metal tool tab	16-7
Inserting the sheet metal parameters	16-8
Switching to flat pattern	16-9
Converting other components	16-10
Using the hole series	16-11
Using the hole wizard	16-12
Adding the smart fasteners	16-15

Table of Contents

Creating an assembly exploded view	16-17
------------------------------------	-------

Weldments – Structural Members 16-18

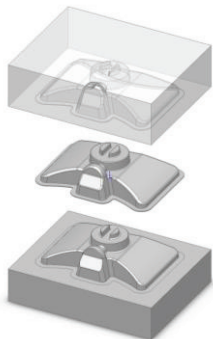
Enabling the weldments toolbar	16-18
Adding the structural members	16-19
Setting the corner treatments	16-19
Adding the contiguous group	16-20
Adding the parallel group	16-21
Trimming the structural members	16-23
Adding the foot pads	16-30
Adding the gussets	16-31
Adding the weld beads	16-32
Viewing the weldments cut list	16-34
Updating the cut list	16-35
Creating a drawing	16-36
Inserting the cut list	16-36
Inserting the balloons	16-36



Top-Down Assembly Topics

Chapter 17:

Top-Down Assembly – Core & Cavity Assembly	17-1
Tools needed	Level 17-2
Opening the existing part	17-3
Applying scale to parts	17-3
Creating Radiate surfaces	17-4
Adding parts into an assembly document	17-5
Creating the core part	17-6
Knitting the surfaces	17-7
Hiding component	17-7
Extruding with up to surface	17-9
Editing part vs. edit assembly modes	17-10
Creating the cavity part	17-11
Creating an assembly exploded views	17-17
Animating the explode / collapse configurations	17-20
Questions for review	17-22



Tooling Design – Part Level 17-23

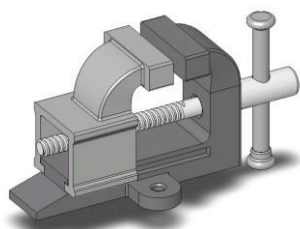
Tools needed	17-24
Opening the IGES file	17-25
Adding a Parting Lines	17-26

Introduction



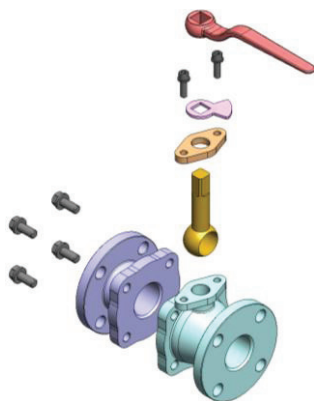
Using the shut off Surfaces command	17-27
Using Parting Surfaces	17-28
Using Tooling Splits	17-30
Saving the 2 halves	17-32
Separating the 2 halves	17-33
Questions for review	17-35

Chapter 18:



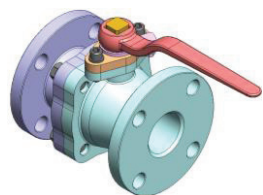
Top-Down Assembly – Miniature Vise	18-1
Tools needed	18-2
Creating the base part	18-3
Adding side flanges	18-5
Creating an offsetting distance plane	18-7
Creating loft profiles and guide curves	18-8
Creating a loft with guide curves	18-11
Creating a new part in an assembly	18-14
Understanding the inplace mates	18-15
Offsetting existing geometry	18-16
Creating a loft with guide cure	18-20
Using loft with guide curve in an assembly	18-22
Extruding with up to surface option	18-25
Creating Internal threads	18-27
Making an assembly section view	18-30
Adding the sub-components	18-32
Questions for review	18-33

Chapter 19:



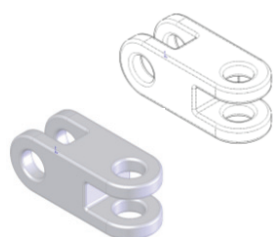
Top-Down Assembly – Water Control Valve	19-1
Tools needed	19-2
Starting a new assembly document	19-3
Changing the units to IPS	19-3
Creating the 1st component	19-4
Revolving the base	19-5
Adding a flange	19-5
Adding mounting holes	19-6
Adding chamfers and fillets	19-8
Saving as virtual component	19-10
Creating the 2nd component	19-10
Extruding the boss	19-12
Adding the transition body	19-12
Adding a flange	19-13
Adding other features	19-14
Exiting the edit part mode	19-20
Applying dimension changes	19-20

Introduction



Viewing the external references	19-22
Inserting other components	19-23
Mating the components	19-24
Creating an assembly exploded view	19-24
Exercise: Lips & Grooves for Plastic Parts	19-27
Exercise: Mounting Bosses for Plastic Parts	19-31

Chapter 20:



External References & Repair Errors	20-1
Tools needed	20-2
Breaking all external references	20-3
Understanding External Reference symbols	20-4
Repairing Sketch level	20-5
Repairing / replacing relations and dimensions	20-6
Questions for review	20-8
Exercise: Repair Errors and External References	20-9

Level 4 Final Exam	20-17
---------------------------	--------------

CSWP Core Preparation Practice

Preparation materials for the CSWP-Core examination	21-1
Part modeling and modifications	21-2
Configurations and design tables	21-22
Part modifications and repair errors	21-28
Bottom up assembly	21-37

Glossary

Index

SolidWorks 2013 Quick-Guides:

Quick Reference Guide to SolidWorks 2013 Command Icons and Toolbars.

