

Residential Design Using AutoCAD® 2014

Includes video instruction

Daniel John Stine CSI, CDT



Visit the following websites to learn more about this book:



[amazon.com](https://www.amazon.com)

[BARNES & NOBLE](https://www.barnesandnoble.com)

[Google books](https://books.google.com)

Table of Contents

	Page
INTRODUCTION – Sketching Exercises	
I-1 Introduction	I-1
I-2 Freehand sketching from photos	I-8
I-3 Surveying and Sketching Objects	I-19
I-4 Sketching Floor Plans	I-23
I-5 Sketching Elevations – two point perspective	I-31
I-6 Sketching Elevations – one point perspective	I-47
I-7 Sketching Plans – one point perspective	I-55
1. Getting Started with AutoCAD 2014	
1-1 What is AutoCAD 2014?	1-1
1-2 Overview of the AutoCAD 2014 User Interface	1-3
1-3 Open, Save & Close an Existing Drawing	1-11
1-4 Creating a New Drawing	1-15
1-5 Using Pan & Zoom to View Your Drawings	1-17
1-6 Using the AutoCAD Help System	1-23
1-7 Introduction to Autodesk 360	1-27
<i>Self-Exam & Review Questions</i>	1-36
2. Crash Course Introduction (The Basics)	
2-1 Lines and Shapes	2-1
2-2 Object Snaps	2-16
2-3 Modify Tools	2-22
2-4 Annotations	2-35
2-5 Printing	2-39
<i>Self-Exam & Review Questions</i>	2-43
3. Drawing Architectural Objects (Draw & Modify)	
3-1 Rectilinear Objects	3-1
3-2 Objects with Curves	3-9
3-3 Using Layers	3-31
<i>Self-Exam & Review Questions</i>	3-41
4. Residential Project: FLOOR PLANS	
4-1 Walls	4-1
4-2 Doors	4-21
4-3 Windows	4-36
4-4 Annotation and Dimensions	4-42
<i>Self-Exam & Review Questions</i>	4-53
<u>Additional Tasks</u>	
Task 4-1 Fireplace (north)	4-54
Task 4-2 Main Stairway	4-59
Task 4-3 Secondary Stairway	4-60
Task 4-4 Porch	4-61
Task 4-5 Garage Steps	4-62
Task 4-6 Fireplace (south)	4-62

	Page
5. Residential Project: EXTERIOR ELEVATIONS	
5-1 Elevation outlines	5-1
5-2 Windows	5-18
5-3 Doors	5-29
5-4 Chimney, Railing and Siding	5-37
<i>Self-Exam & Review Questions</i>	5-51
<u>Additional Tasks</u>	
Task 5-1 Grade Line	5-52
Task 5-2 Draw the other Chimney	5-54
Task 5-3 Print content from a web site	5-55
Task 5-4 Adding Foundation lines	5-55
6. Residential Project: SECTIONS	
6-1 Building Sections	6-1
6-2 Typical Wall Section	6-6
6-3 Adding Annotation to the Wall Section	6-10
6-4 Stair Section	6-14
<i>Self-Exam & Review Questions</i>	6-24
<u>Additional Tasks</u>	
Task 6-1 Additional Building Sections	6-25
Task 6-2 Wall Section at Garage	6-25
Task 6-3 Hatch Wall Sections	6-25
Task 6-4 Stair Detail	6-26
7. Residential Project: PLAN LAYOUT & INTERIOR ELEVATIONS	
7-1 Bathroom Layout	7-1
7-2 Bathroom Elevation	7-8
7-3 Adding Furnishings to your Floor Plans	7-21
7-4 Using Tool Palettes	7-27
<i>Self-Exam & Review Questions</i>	7-38
<u>Additional Tasks</u>	
Task 7-1 Toilet Room Plan Layouts	7-39
Task 7-2 Toilet Room Elevations	7-39
Task 7-3 Furniture Layout	7-39
8. Residential Project: SITE PLAN	
8-1 Draw existing survey	8-1
8-2 Add House, Driveway and Walks	8-10
8-3 Layout New Contours	8-14
<i>Self-Exam & Review Questions</i>	8-21
<u>Additional Tasks</u>	
Task 8-1 <i>Add items to the Site Plan</i>	8-22
Task 8-2 <i>Draw another grade profile</i>	8-22
Task 8-3 <i>Update grade profile for each exterior elev.</i>	8-22
9. Residential Project: SCHEDULES & SET UP SHEET	
9-1 Room Finish Schedule	9-1
9-2 Sheet Setup& Management (Sheet Sets)	9-17
9-3 Sheet Index	9-46
<i>Self-Exam & Review Questions</i>	9-53
<u>Additional Tasks</u>	
Task 9-1 <i>Create Door Schedule</i>	9-54
Task 9-2 <i>Place all your views on sheets</i>	9-54
Task 9-3 <i>Place callout bubbles on your sheets</i>	9-54
Task 9-4 <i>Add additional raster images to your drawing</i>	9-54

	Page
10. Residential Project: LINEWEIGHTS & PLOTTING	
10-1 Lineweights	10-1
10-2 Plotting: Digital Set	10-12
10-3 Plotting: Hardcopy Set	10-26
<i>Self-Exam & Review Questions</i>	10-36
<u>Additional Tasks</u>	
Task 10-1 <i>Apply lineweights to all your drawings</i>	10-37
Task 10-2 <i>Plot all your drawings full size</i>	10-37
Task 10-3 <i>Email a DWF file</i>	10-37
 Appendix A – Engineering Graphics	
A-1 Introduction	A-1
A-2 Engineering Graphics	A-2
A-3 Orthographic Projection	A-11
 Index	 Index-1

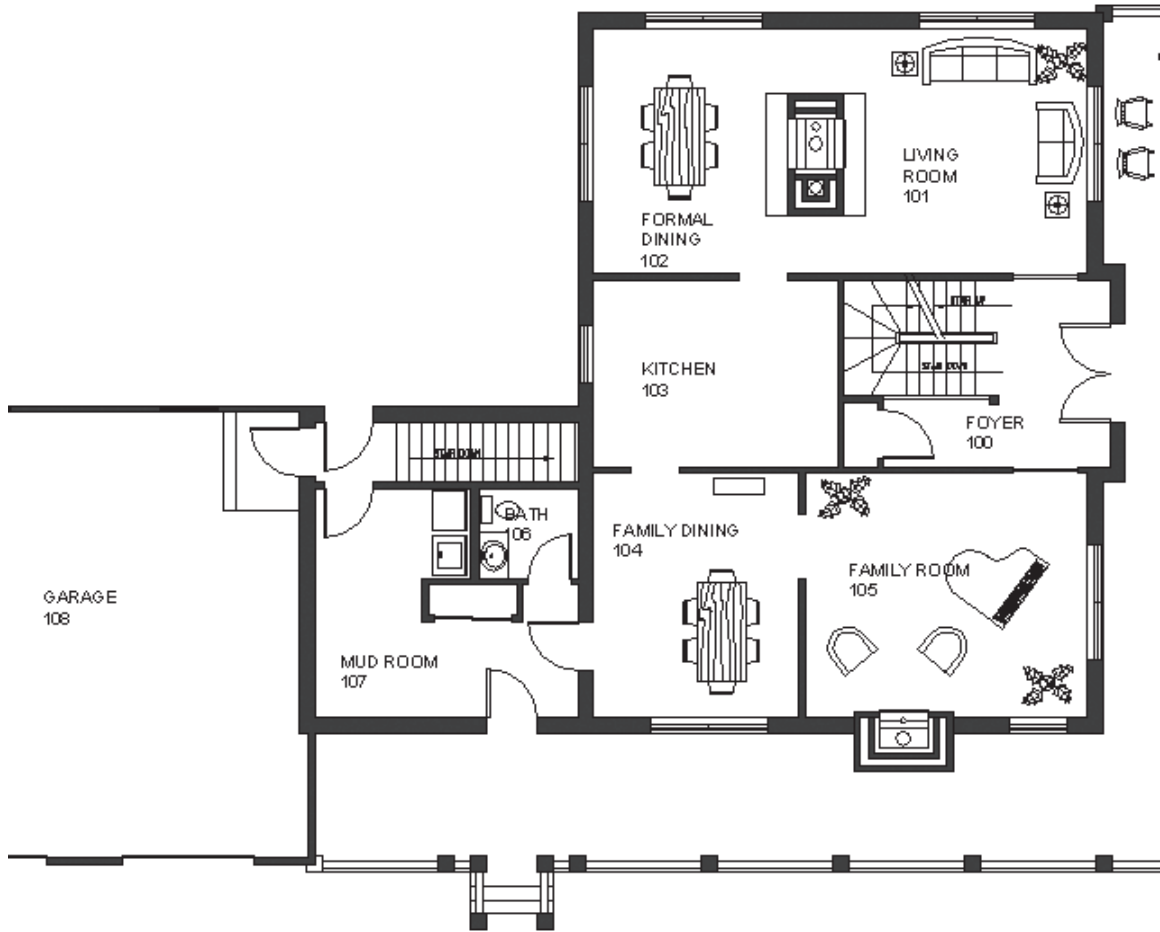
DVD Content

11. INTRODUCTION TO COMPUTERS- 50 pages
11-1 Computer Basics: Terms and Functions
11-2 Overview of the Windows User Interface
11-3 File Management Introduction
<i>Self-Exam & Review Questions</i>
 12. INTRODUCTION: MUST KNOW COMMANDS- 88 pages
12-1 Drafting and Display Tools
12-2 Draw Commands
12-3 Modify – Part 1
12-4 Modify – Part 2
12-5 Annotation and Layers
12-6 Plotting
<i>Self-Exam & Review Questions</i>

Appendix B – ROOF STUDY WORKBOOK – DRAFT EDITION - 89 pages

Videos

1. User Interface
2. Getting Started
3. Draw Tools
4. Modify Tools
5. Annotation
6. Floor Plans
7. Exterior Elevations
8. Sections
9. Interior Design
10. Site Plans
11. Schedules
12. SheetSets
13. Line Weights
14. Plotting



Floor plan created in Chapter 4, utilizing blocks, hatching, layers, dimensions and text.



Exterior Elevation created in Chapter 5, utilizing blocks, hatching, lineweights and line types.

