

Design Integration Using Autodesk® Revit® 2015

Architecture, Structure and MEP



Daniel John Stine CSI, CDT

SDC
PUBLICATIONS

Better Textbooks. Lower Prices.
www.SDCpublications.com



Visit the following websites to learn more about this book:



[amazon.com](https://www.amazon.com)

[Google books](https://books.google.com)

[BARNES & NOBLE](https://www.barnesandnoble.com)

Table of Contents

| | | |
|-----------|--|------|
| 1. | Getting Started with Revit 2015 | |
| 1-1 | What Is Revit 2015? | 1-1 |
| 1-2 | Overview of the Revit User Interface | 1-11 |
| 1-3 | Open, Save and Close and Existing Project | 1-25 |
| 1-4 | Creating a New Project | 1-30 |
| 1-5 | Using Pan and Zoom to View Your Drawings | 1-32 |
| 1-6 | Using Revit's Help System | 1-37 |
| 1-7 | Introduction to Autodesk 360 | 1-40 |
| | <i>Self-Exam & Review Questions</i> | 1-48 |
| 2. | Quick Start: Small Office | |
| 2-1 | Walls, Grids and Dimensions | 2-1 |
| 2-2 | Doors | 2-18 |
| 2-3 | Windows | 2-25 |
| 2-4 | Roof | 2-28 |
| 2-5 | Annotation, Room Tags & Schedules | 2-33 |
| 2-6 | Printing | 2-38 |
| | <i>Self-Exam & Review Questions</i> | 2-41 |
| 3. | Revit Basics: Overview of Linework and Modify Tools | |
| 3-1 | Lines and Shapes | 3-1 |
| 3-2 | Snaps | 3-15 |
| 3-3 | Edit Tools | 3-20 |
| 3-4 | Annotations | 3-33 |
| | <i>Self-Exam & Review Questions</i> | 3-37 |
| 4. | Revit Basics: Drawing 2D Architectural Content | |
| 4-1 | Sketching Rectilinear Objects | 4-1 |
| 4-2 | Sketching Objects With Curves | 4-11 |
| | <i>Self-Exam & Review Questions</i> | 4-29 |
| 5. | Law Office: Floor Plans | |
| 5-1 | Project Setup | 5-1 |
| 5-2 | Exterior Walls | 5-10 |
| 5-3 | Interior Walls | 5-24 |
| 5-4 | Doors, Windows and Curtain Walls | 5-40 |
| 5-5 | Stairs | 5-66 |
| | <i>Self-Exam & Review Questions</i> | 5-74 |
| 6. | Law Office: Roof, Floors & Ceilings | |
| 6-1 | Introduction to the Roof Tool | 6-2 |
| 6-2 | Law Office Roof | 6-17 |
| 6-3 | Floor Systems | 6-25 |
| 6-4 | Ceiling Systems | 6-37 |
| | <i>Self-Exam & Review Questions</i> | 6-49 |

| | | |
|-------------|---|-------|
| 7. | Law Office: Structural System | |
| 7-1 | Introduction to Revit Structure | 7-1 |
| 7-2 | Creating Views and Loading Content | 7-9 |
| 7-3 | Grids, Columns and Beams | 7-21 |
| 7-4 | Floors and Bar Joist Layout | 7-43 |
| 7-5 | Foundations and Footings | 7-57 |
| 7-6 | Structural Annotation and Tags | 7-70 |
| | <i>Self-Exam & Review Questions</i> | 7-78 |
| 8. | Law Office: Elevations, Sections and Details | |
| 8-1 | Exterior Elevations | 8-1 |
| 8-2 | Interior Elevations | 8-12 |
| 8-3 | Building Sections | 8-17 |
| 8-4 | Wall Sections | 8-27 |
| 8-5 | Details | 8-37 |
| | <i>Self-Exam & Review Questions</i> | 8-62 |
| 9. | Law Office: Interior Design | |
| 9-1 | Toilet Room Layouts | 9-2 |
| 9-2 | Cabinets | 9-15 |
| 9-3 | Furniture | 9-24 |
| 9-4 | Column Furring, Guardrails and Interior Curtain Wall | 9-30 |
| | <i>Self-Exam & Review Questions</i> | 9-40 |
| 10. | Law Office: Schedules | |
| 10-1 | Rooms, Room Tags & Door Tags | 10-1 |
| 10-2 | Generate a Door Schedule | 10-12 |
| 10-3 | Generate a Room Finish Schedule | 10-17 |
| 10-4 | Creating a Graphical Column Schedule | 10-25 |
| | <i>Self-Exam & Review Questions</i> | 10-28 |
| 11. | Law Office: Mechanical System | |
| 11-1 | Introduction to Revit MEP – Mechanical & Plumbing | 11-1 |
| 11-2 | Creating Views and Loading Content | 11-8 |
| 11-3 | Placing Air Terminals and the Air Handling Unit (AHU) | 11-17 |
| 11-4 | VAV Boxes, MEP Systems & Ductwork | 11-26 |
| 11-5 | Plumbing Layout | 11-38 |
| | <i>Self-Exam & Review Questions</i> | 11-45 |
| 12. | Law Office: Electrical System | |
| 12-1 | Introduction to Revit MEP – Electrical | 12-1 |
| 12-2 | Creating Views and Loading Content | 12-2 |
| 12-3 | Panelboard, Power Devices and MEP Systems | 12-6 |
| 12-4 | Light Fixture and Light Switch Layout | 12-18 |
| 12-5 | Systems Layout | 12-30 |
| | <i>Self-Exam & Review Questions</i> | 12-32 |
| 13. | Law Office: Site and Renderings | |
| 13-1 | Site Tools | 13-1 |
| 13-2 | Creating and Exterior Rendering | 13-10 |
| 13-3 | Rendering and Isometric Rendering | 13-28 |
| 13-4 | Creating and Interior Rendering | 13-31 |
| 13-5 | Adding People to the Rendering | 13-36 |
| | <i>Self-Exam & Review Questions</i> | 13-39 |
| 14. | Law Office: Construction Documents Set | |
| 14-1 | Setting Up a Sheet | 14-1 |
| 14-2 | Sheet Index | 14-13 |
| 14-3 | Printing a Set of Drawings | 14-17 |
| | <i>Self-Exam & Review Questions</i> | 14-24 |
| Appendix V: | Introduction to Autodesk Vasari | V-1 |

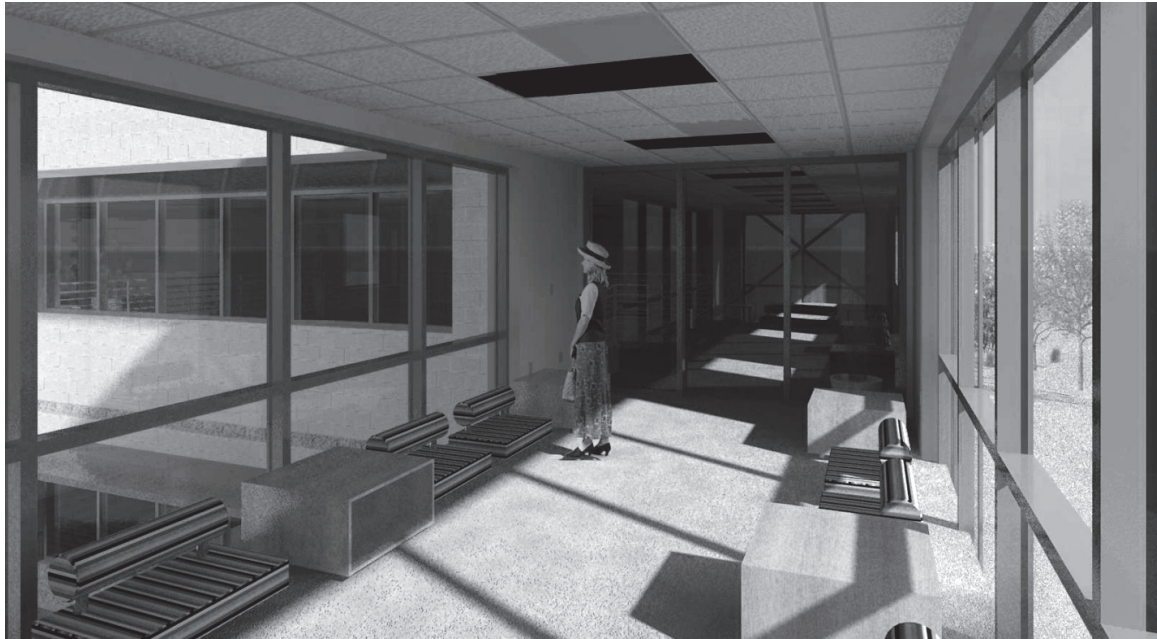
CD Contents

| | | |
|-------------|--|-------|
| 15. | Revit Families: Introduction to Revit Content Creation - 66 pages | |
| 15-1 | Basic Family Concepts | 15-1 |
| 15-2 | The Box: Creating the Geometry | 15-13 |
| 15-3 | The Box: Adding Parameters | 15-29 |
| 15-4 | The Box: Formulas and Materials | 15-45 |
| 15-5 | The Box: Family Types and Categories | 15-59 |
| | <i>Self-Exam & Review Questions</i> | 15-66 |
| 16. | Introduction to Computers for CAD/BIM Users | |
| 16-1 | Computer Basics: Terms and Functions | 16-1 |
| 16-2 | Overview of the Windows User Interface | 16-18 |
| 16-3 | File Management Introduction | 16-30 |
| 16-4 | File Management Exercises | 16-48 |
| | <i>Self-Exam & Review Questions</i> | 16-50 |
| Appendix A: | Autodesk Revit Architecture Certification Exam | |
| | <i>Introduction</i> | A-1 |
| | <i>Self-Exam & Review Questions</i> | A-3 |
| | <i>Self Exam Answers</i> | A-8 |
| Appendix B: | Finding Missing Elements in Revit - 22 pages | B-1 |
| Appendix C: | Roof Study Workbook – Draft Edition - 89 pages | |
| | <i>Introduction</i> | C-3 |
| | <i>Roof Slopes and Styles</i> | C-5 |
| | <i>Roof Styles (with bonus Revit material)</i> | C-9 |
| | <i>Roof Plan Study</i> | C-33 |
| | <i>Roof Plan Layout Exercises</i> | C-66 |
| Appendix D: | Rooms and Spaces; Revit's Unbuilt Elements - 10 pages | D-1 |
| Appendix E: | Lighting Design in Revit using ElumTools | E-1 |
| Appendix F: | Introduction to working with 3D PDF - 12 pages | F-1 |
| Appendix S: | Introduction to Autodesk Showcase - 80 pages | S-1 |

Videos

- | | |
|----------------------|------------------------------|
| 1. User Interface | 11. Rendering |
| 2. Walls | 12. Design Options |
| 3. Doors and Windows | 13. Sheets and Sheet Lists |
| 4. Stairs | 14. Worksharing Introduction |
| 5. Roofs | 15. Phases |
| 6. Floors | 16. Sweeps and Reveals |
| 7. Ceilings | 17. Revit Structure |
| 8. Elevations | 18. Revit MEP - Mechanical |
| 9. Sections | 19. Revit MEP - Electrical |
| 10. Schedules | |

The image below is a view of the model developed in this tutorial.



Cutaway view of project created from scratch by reader! Notice the walls, windows, curtain wall, doors, cabinets, roof, floors, ceilings, furniture, structure, electrical and HVAC elements.

