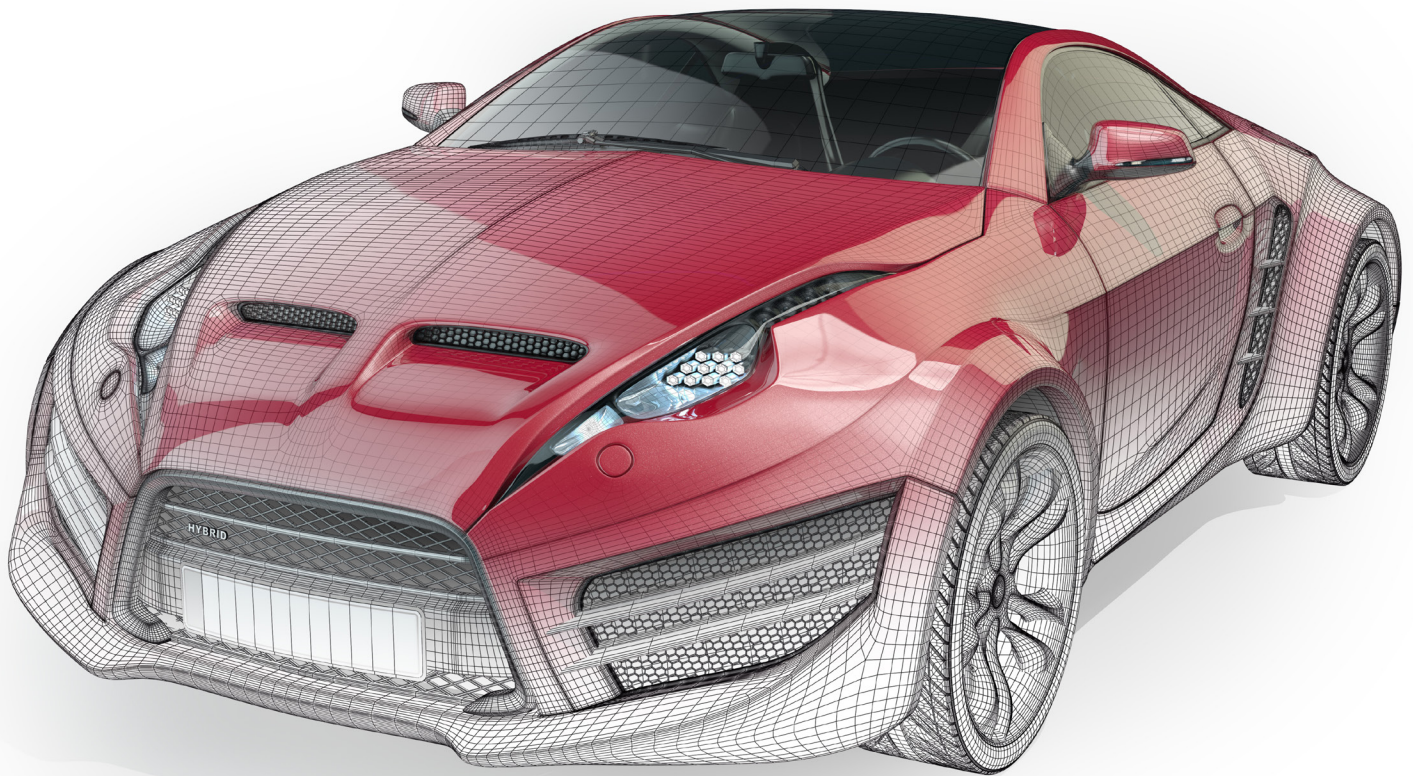


# CSWE

## Certified SolidWorks® Expert

# Preparation Materials

SolidWorks 2010 - 2015



Paul Tran CSWE, CSWI

Visit the following websites to learn more about this book:



**amazon.com**

**Google books**

**BARNES&NOBLE**

# Table of Contents

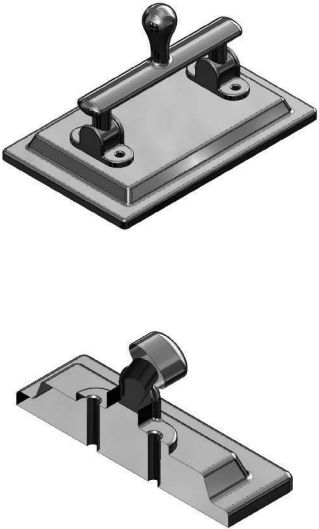
---

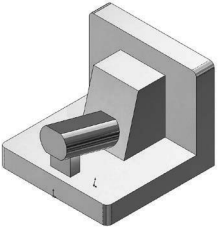


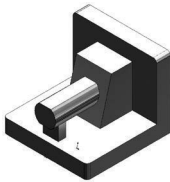
---

Copyrights Notices  
Disclaimer  
Trademarks

## Introduction: Are You the Next CSWE?

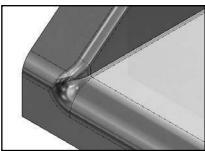
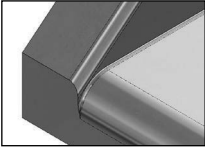
<b>Chapter 1: Surface Modifications</b>		<b>1-1</b>
	Chapter summary	1-1
	Tools Needed	1-2
	Opening a part document	1-3
	Working with Surfaces	1-3
	Deleting the faces	1-3
	Measuring the angle	1-4
	Rotating the handle	1-5
	Recreating the surfaces	1-6
	Hiding a surface body	1-8
	Trimming the surfaces	1-9
	Showing a surface body	1-10
	Knitting all surface bodies	1-10
	Creating a section view	1-11
	Measuring the mass	1-11
	Exercise: Surface Modifications	1-13

<b>Chapter 2: Assembly Modifications</b>		<b>2-1</b>
	Chapter summary	2-1
	Tools Needed	2-2
	Opening an assembly document	2-3
	Editing the first component	2-3
	Adding Draft	2-4
	Viewing the draft results	2-5
	Editing the second component	2-6
	Replacing a plane	2-6
	Repairing the sketch errors	2-7
	Correcting the end condition	2-8
	Exiting the edit component mode	2-9



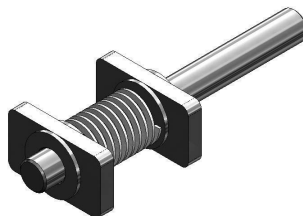
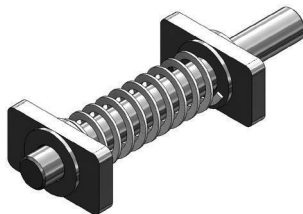
Measuring the center of mass	2-10
Exercise: Using manual drafts	2-11

## Chapter 3: The Order of Fillets 3-1



Chapter summary	3-1
Tools Needed	3-2
Opening a part document	3-3
Comparing the fillet results	3-3
Planning the order of fillets	3-4
Adding the face fillet	3-4
Creating the constant fillet	3-5
Adding another constant fillet	3-6
Measuring the mass	3-6
Exercise: Fillet Options	3-7

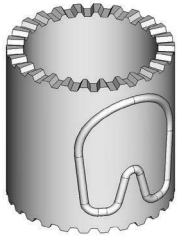
## Chapter 4: Creating a Flat Spring Assembly 4-1



Chapter summary	4-1
Tools Needed	4-2
Starting a new part template	4-3
Creating the helix - the sweep path	4-4
Creating the sweep profile	4-4
Adding the pierce relation	4-5
Creating the swept feature	4-5
Creating an axis	4-6
Opening an assembly document	4-7
Inserting the part into an assembly	4-7
Showing the axis	4-7
Adding mates	4-8
Checking the degrees of freedom	4-8
Adding coincident mates	4-9
Applying dimension changes	4-11
Viewing the results	4-12
Calculating the center of mass	4-12
Exercise: Spring Assembly	4-13

## Chapter 5: Part Modifications 5-1

Chapter summary	5-1
Tools Needed	5-2
Opening a part document	5-3



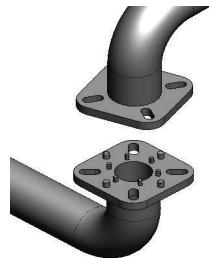
Modifying the model	5-3
Converting the outline of a feature	5-3
Deleting the on-edge relations	5-4
Removing the raised feature	5-5
Creating a cut	5-5
Recreating the sweep path	5-6
Using projected curve	5-6
Creating the sweep profile	5-7
Adding the pierce relation	5-7
Creating a swept feature	5-8
Calculating the mass	5-9
Exercise: Part modifications	5-11

## Chapter 6: Replacing External References 6-1



Chapter summary	6-1
Tools Needed	6-2
Opening an assembly document	6-3
Examining the existing mates	6-3
Suppressing the InPlace mate	6-4
Adding a concentric mate	6-4
Editing a component	6-5
Replacing the sketch plane	6-5
Viewing the external reference symbols	6-6
Exiting the edit component mode	6-6
Adding new mates	6-7
Adding a concentric mate	6-7
Adding a distance mate	6-7
Measuring the center of mass	6-8
Exercise: Replacing External References	6-9

## Chapter 7: Working with Multibodies 7-1

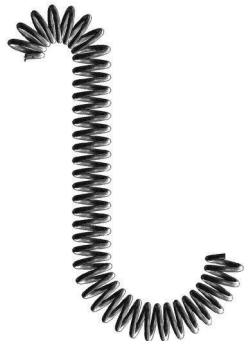


Chapter summary	7-1
Tools Needed	7-2
Opening an assembly file	7-3
Switching to the part level	7-4
Editing a feature	7-4
Using Move / Copy / Constraint	7-5
Adding mates	7-5
Changing the display option	7-6
Using the combine command	7-7



Using combine add	7-7
Switching back to assembly	7-8
Rebuilding the assembly	7-9
Measuring the center of mass	7-9
Exercise: Combining Multibodies	7-11

## Chapter 8: Creating a Curved Spring 8-1



Chapter summary	8-1
Tools Needed	8-2
Starting a new part template	8-3
Creating the sweep path	8-3
Creating the sweep profile	8-4
Creating a swept feature	8-4
Setting the twist type	8-5
Entering the number of turns	8-5
Assigning the material	8-5
Calculating the final mass	8-6
Exercise: Circular Spring – Expanded	8-7

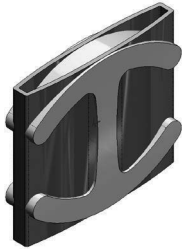
## Chapter 9: Working with Sketch Pictures 9-1



Chapter summary	9-1
Tools Needed	9-2
Creating a layout sketch	9-3
Inserting the picture	9-4
Locating the picture	9-4
Scaling the picture	9-5
Tracing the picture	9-5
Creating the offset entities	9-7
Closing off the sketch profile	9-7
Adding the sketch fillets	9-8
Adding the revolved centerline	9-9
Revolving the profile	9-10
Measuring the mass of the part	9-10
Exercise: Working with Sketch Pictures	9-11

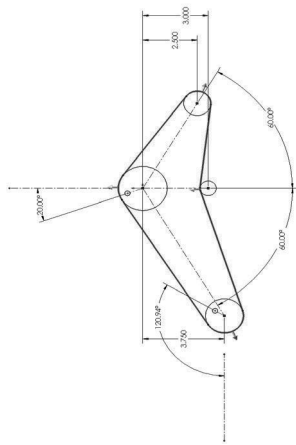
## Chapter 10: Cut with Surface 10-1

Chapter summary	10-1
Tools Needed	10-2
Opening an assembly file	10-3



Editing a component	10-3
Creating an offset surface	10-4
Creating a surface cut	10-5
Flipping the cut direction	10-5
Hiding a component	10-6
Hiding a surface	10-6
Adding fillets	10-6
Exiting the edit component mode	10-8
Calculating the mass	10-8
Exercise: Cut with Surface	10-9

## Chapter 11: Using Belt Chain 11-1



Chapter summary	11-1
Tools Needed	11-2
Starting a new part template	11-3
Creating the main sketch	11-3
Making the blocks	11-4
Creating a belt chain	11-5
Entering the belt length	11-6
Adding the angular dimensions	11-7
Adding a reference dimension	11-7
Applying dimension changes	11-8
Checking the new belt length	11-9
Changing the pulley's angle	11-9
Verifying the new belt length	11-10
Exercise: Creating a belt chain	11-11

## Glossary

## Index

## SolidWorks Quick-Guides:

Quick Reference Guide to SolidWorks Command Icons and Toolbars.

