

# Design Integration Using Autodesk® Revit® 2016

Architecture, Structure and MEP



Daniel John Stine CSI, CDT



**Better Textbooks. Lower Prices.**  
[www.SDCpublications.com](http://www.SDCpublications.com)



Visit the following websites to learn more about this book:



[amazon.com](https://www.amazon.com)

[Google books](https://books.google.com)


[BARNES & NOBLE](https://www.barnesandnoble.com)

## Table of Contents

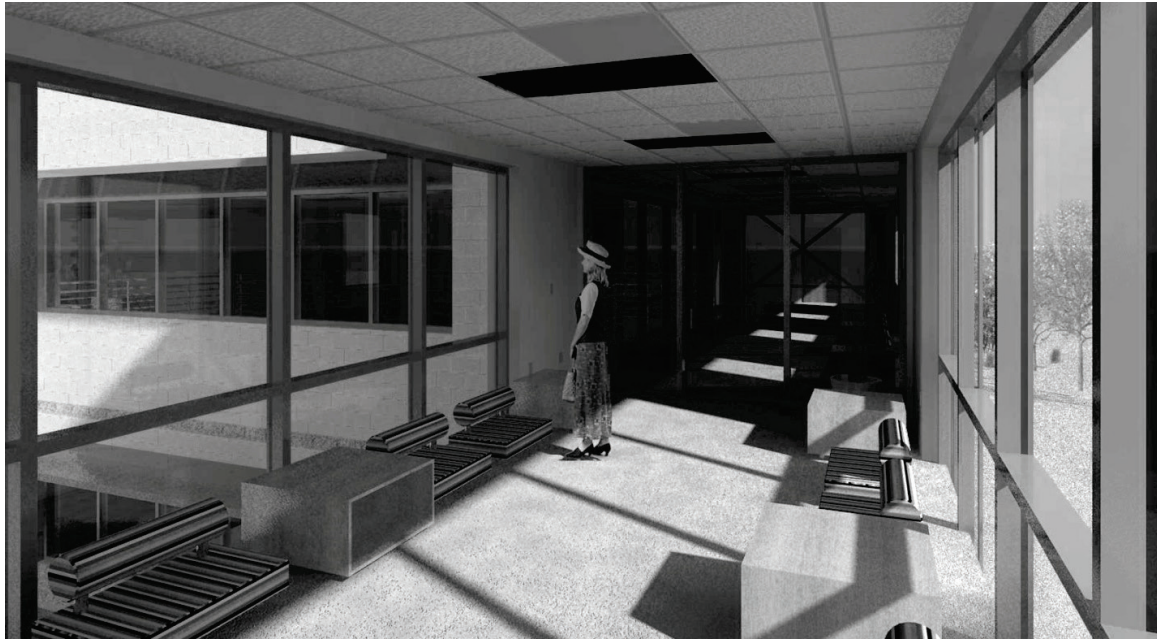
		<i>page</i>
<b>1.</b>	<b>Getting Started with Revit 2016</b>	
1-1	What Is Revit 2016?	1-1
1-2	Overview of the Revit User Interface	1-11
1-3	Open, Save and Close and Existing Project	1-26
1-4	Creating a New Project	1-31
1-5	Using Pan and Zoom to View Your Drawings	1-33
1-6	Using Revit's Help System	1-38
1-7	Introduction to Autodesk 360	1-41
	<i>Self-Exam &amp; Review Questions</i>	1-50
<b>2.</b>	<b>Quick Start: Small Office</b>	
2-1	Walls, Grids and Dimensions	2-1
2-2	Doors	2-18
2-3	Windows	2-25
2-4	Roof	2-28
2-5	Annotation, Room Tags & Schedules	2-33
2-6	Printing	2-38
	<i>Self-Exam &amp; Review Questions</i>	2-41
<b>3.</b>	<b>Revit Basics: Overview of Linework and Modify Tools</b>	
3-1	Lines and Shapes	3-1
3-2	Snaps	3-15
3-3	Edit Tools	3-20
3-4	Annotations	3-33
	<i>Self-Exam &amp; Review Questions</i>	3-37
<b>4.</b>	<b>Revit Basics: Drawing 2D Architectural Content</b>	
4-1	Sketching Rectilinear Objects	4-1
4-2	Sketching Objects With Curves	4-11
	<i>Self-Exam &amp; Review Questions</i>	4-29
<b>5.</b>	<b>Law Office: Floor Plans</b>	
5-1	Project Setup	5-1
5-2	Exterior Walls	5-10
5-3	Interior Walls	5-24
5-4	Doors, Windows and Curtain Walls	5-40
5-5	Stairs	5-66
	<i>Self-Exam &amp; Review Questions</i>	5-74
<b>6.</b>	<b>Law Office: Roof, Floors &amp; Ceilings</b>	
6-1	Introduction to the Roof Tool	6-2
6-2	Law Office Roof	6-17
6-3	Floor Systems	6-25
6-4	Ceiling Systems	6-37
	<i>Self-Exam &amp; Review Questions</i>	6-49
<b>7.</b>	<b>Law Office: Structural System</b>	
7-1	Introduction to Revit Structure	7-1
7-2	Creating Views and Loading Content	7-9
7-3	Grids, Columns and Beams	7-21
7-4	Floors and Bar Joist Layout	7-43
7-5	Foundations and Footings	7-57
7-6	Structural Annotation and Tags	7-70
	<i>Self-Exam &amp; Review Questions</i>	7-78

<b>8.</b>	<b>Law Office: Elevations, Sections and Details</b>	
8-1	Exterior Elevations	8-1
8-2	Interior Elevations	8-12
8-3	Building Sections	8-17
8-4	Wall Sections	8-27
8-5	Details	8-37
	<i>Self-Exam &amp; Review Questions</i>	8-62
<b>9.</b>	<b>Law Office: Interior Design</b>	
9-1	Toilet Room Layouts	9-2
9-2	Cabinets	9-15
9-3	Furniture	9-24
9-4	Column Furring, Guardrails and Interior Curtain Wall	9-30
	<i>Self-Exam &amp; Review Questions</i>	9-40
<b>10.</b>	<b>Law Office: Schedules</b>	
10-1	Rooms, Room Tags & Door Tags	10-1
10-2	Generate a Door Schedule	10-12
10-3	Generate a Room Finish Schedule	10-17
10-4	Creating a Graphical Column Schedule	10-25
	<i>Self-Exam &amp; Review Questions</i>	10-28
<b>11.</b>	<b>Law Office: Mechanical System</b>	
11-1	Introduction to Revit MEP – Mechanical & Plumbing	11-1
11-2	Creating Views and Loading Content	11-8
11-3	Placing Air Terminals and the Air Handling Unit (AHU)	11-17
11-4	VAV Boxes, MEP Systems & Ductwork	11-26
11-5	Plumbing Layout	11-38
	<i>Self-Exam &amp; Review Questions</i>	11-46
<b>12.</b>	<b>Law Office: Electrical System</b>	
12-1	Introduction to Revit MEP – Electrical	12-1
12-2	Creating Views and Loading Content	12-2
12-3	Panelboard, Power Devices and MEP Systems	12-6
12-4	Light Fixture and Light Switch Layout	12-18
12-5	Systems Layout	12-30
	<i>Self-Exam &amp; Review Questions</i>	12-32
<b>13.</b>	<b>Law Office: Site and Renderings</b>	
13-1	Site Tools	13-1
13-2	Creating and Exterior Rendering	13-10
13-3	Rendering and Isometric Rendering	13-28
13-4	Creating and Interior Rendering	13-31
13-5	Adding People to the Rendering	13-36
	<i>Self-Exam &amp; Review Questions</i>	13-40
<b>14.</b>	<b>Law Office: Construction Documents Set</b>	
14-1	Setting Up a Sheet	14-1
14-2	Sheet Index	14-13
14-3	Printing a Set of Drawings	14-17
	<i>Self-Exam &amp; Review Questions</i>	14-24
<b>15.</b>	<b>Introduction to Phasing and Worksharing</b>	
15-1	Introduction to Phasing	15-1
15-2	Introduction to Worksharing	15-10
15-3	Phasing Exercise	15-23
15-4	Worksharing Exercise	15-35
	<i>Self-Exam &amp; Review Questions</i>	15-46
<b>16.</b>	<b>Revit Families: Introduction to Revit Content Creation</b> <i>66 pages</i>	
16-1	Basic Family Concepts	16-1
16-2	The Box: Creating the Geometry	16-13
16-3	The Box: Adding Parameters	16-29
16-4	The Box: Formulas and Materials	16-45
16-5	The Box: Family Types and Categories	16-59
	<i>Self-Exam &amp; Review Questions</i>	16-66

## Disc Contents

<b>17.</b>	<b>Introduction to Computers for CAD/BIM Users</b>	
17-1	Computer Basics: Terms and Functions	17-1
17-2	Overview of the Windows User Interface	17-18
17-3	File Management Introduction	17-30
17-4	File Management Exercises	17-48
	<i>Self-Exam &amp; Review Questions</i>	17-50
Appendix A:	<b>Autodesk Revit Architecture Certification Exam</b>	
	<i>Introduction</i>	A-1
	<i>Self-Exam &amp; Review Questions</i>	A-3
	<i>Self-Exam Answers</i>	A-8
Appendix B:	<b>Finding Missing Elements in Revit</b> <i>22 pages</i>	B-1
Appendix C:	<b>Roof Study Workbook – Draft Edition</b> <i>89 pages</i>	
	Introduction	C-3
	Roof Slopes and Styles	C-5
	Roof Styles ( <i>with bonus Revit material</i> )	C-9
	Roof Plan Study	C-33
	Roof Plan Layout Exercises	C-66
Appendix D:	<b>Rooms and Spaces; Revit's Unbuilt Elements</b> <i>10 pages</i>	D-1
Appendix E:	<b>Lighting Design in Revit using ElumTools</b> <i>40 pages</i>	E-1
Appendix F:	<b>Introduction to working with 3D PDF</b> <i>12 pages</i>	F-1
Appendix S:	<b>Introduction to Autodesk Showcase</b> <i>80 pages</i>	S-1
<b>Videos</b>		
1.	User Interface	11. Rendering
2.	Walls	12. Design Options
3.	Doors and Windows	13. Sheets and Sheet Lists
4.	Stairs	14. Worksharing Introduction
5.	Roofs	15. Phases
6.	Floors	16. Sweeps and Reveals
7.	Ceilings	17. Revit Structure
8.	Elevations	18. Revit MEP - Mechanical
9.	Sections	19. Revit MEP - Electrical
10.	Schedules	

The image below is a view of the model developed in this tutorial.



Cutaway view of project created from scratch by reader! Notice the walls, windows, curtain wall, doors, cabinets, roof, floors, ceilings, furniture, structure, electrical and HVAC elements.

