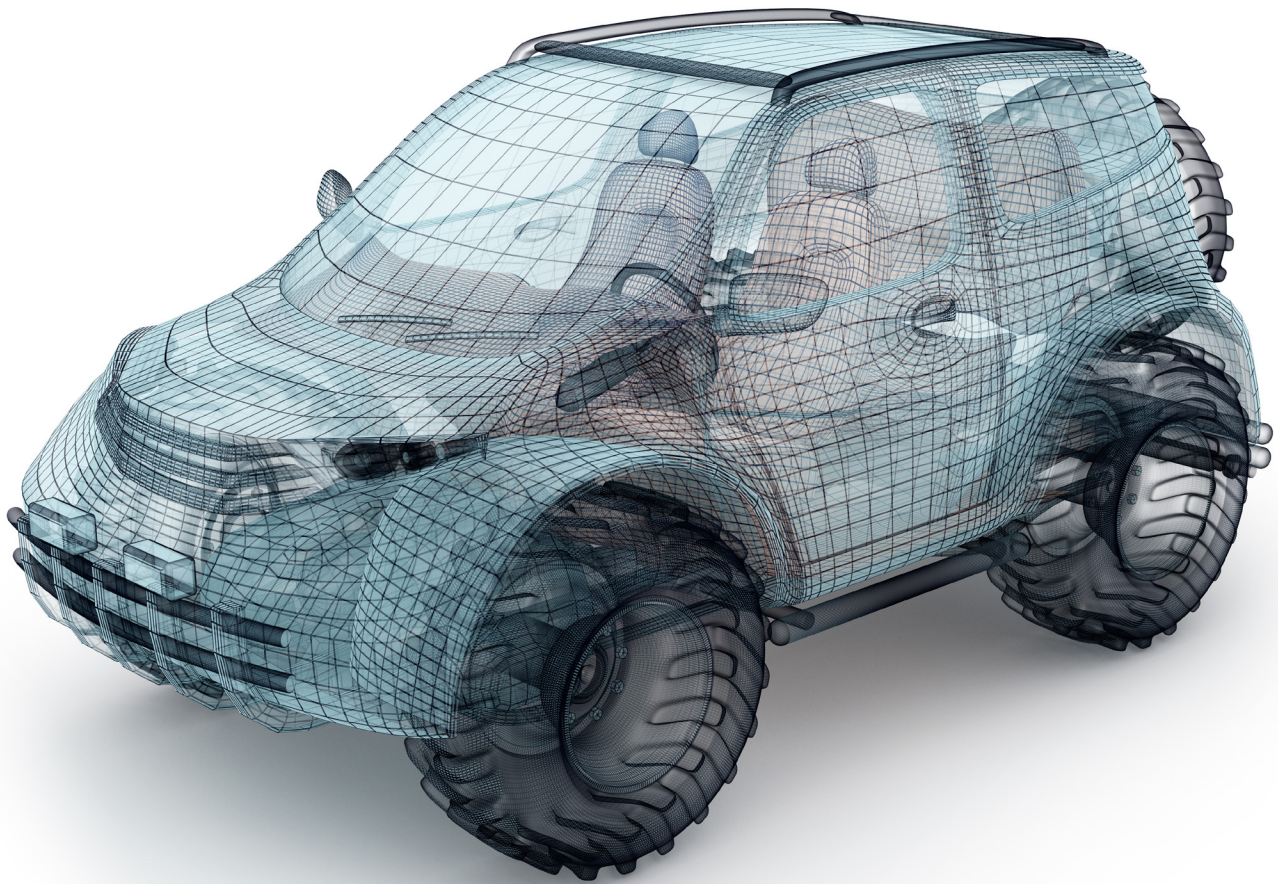


Certified SOLIDWORKS® Expert Preparation Materials

SOLIDWORKS® 2016



Paul Tran CSWE, CSWI

Visit the following websites to learn more about this book:



[amazon.com](https://www.amazon.com)

[Google books](https://books.google.com)

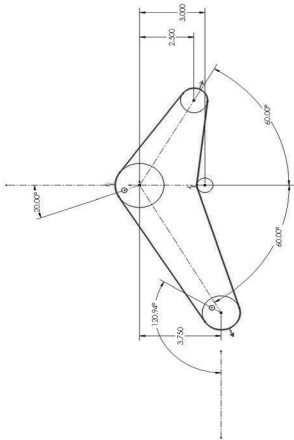
[BARNES & NOBLE](https://www.barnesandnoble.com)

Table of Contents

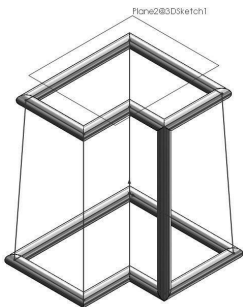
Copyrights Notices
Disclaimer
Trademarks

Introduction: Are You the Next CSWE?

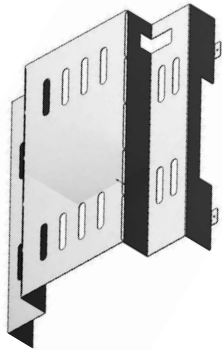
Chapter 1:	Using Belt Chain	1-1
	Chapter summary	1-1
	Tools Needed	1-2
	Starting a new part template	1-3
	Creating the main sketch	1-3
	Making the blocks	1-4
	Creating a belt chain	1-5
	Adding the angular dimensions	1-7
	Applying dimension changes	1-8
	Checking the belt length	1-9
	Changing the pulley's angle	1-9
	Verifying the new belt length	1-10
	Saving your work	1-10
	Exercise: Creating a belt chain	1-11



Chapter 2:	Advanced Weldments	2-1
	Chapter summary	2-1
	Tools Needed	2-2
	Starting a new part template	2-3
	Creating a 3D sketch	2-3
	Creating the second portion of the 3D sketch	2-6
	Connecting the second sketch portions	2-7
	Adding the structural members	2-8
	Assigning the material	2-9
	Calculating the mass	2-10
	Adding more groups	2-11
	Modifying the dimensions	2-13
	Calculating the mass	2-14
	Saving your work	2-14



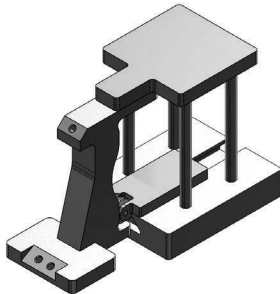
Chapter 3:



Advanced Sheet Metal

Chapter summary	3-1
Tools Needed	3-2
Opening an IGES document	3-3
Changing the display style	3-4
Enabling the sheet metal tool tab	3-5
Converting to sheet metal	3-5
Measuring the flat length	3-6
Unfolding the bends	3-7
Extruding a cut	3-8
Folding the bends	3-8
Assigning material	3-9
Calculating the mass	3-9
Saving your work	3-10

Chapter 4:



Cam Motions

Chapter summary	4-1
Tools Needed	4-2
Opening an assembly document	4-3
Adding a tangent mate	4-4
Measuring the minimum distance	4-5
Measuring the maximum distance	4-6
Saving your work	4-6

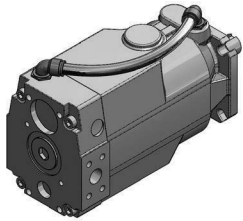
Chapter 5:



Assembly Drawings & BOMs

Chapter summary	5-1
Tools Needed	5-2
Opening an assembly document	5-3
Transferring to a drawing	5-4
Adding an isometric drawing view	5-5
Adding a Bill of Materials	5-6
Changing the column property	5-7
Locating the quantity	5-7
Creating another custom property	5-7
Locating the finish	5-8
Changing the BOM type	5-9
Locating the sub-component	5-9
Saving your work	5-10

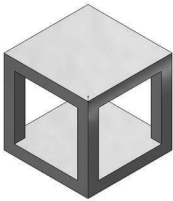
Chapter 6:



Assembly Modifications

Chapter summary	6-1
Tools Needed	6-2
Opening an assembly document	6-3
Creating a new plane	6-3
Creating a new component	6-4
Creating a fit spline	6-6
Creating a new plane	6-7
Sketching the sweep profile	6-7
Creating a sweep	6-8
Assigning material	6-9
Calculating the mass	6-9
Saving your work	6-10

Chapter 7:

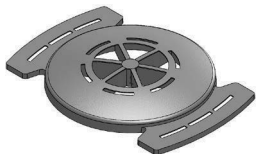


Combine Common

Chapter summary	7-1
Tools Needed	7-2
Starting a new part document	7-3
Creating the first solid body	7-3
Creating the second solid body	7-5
Creating a combine-common body	7-6
Finding the volume of the new body	7-7
Starting a new part document	7-8
Creating the first solid body	7-8
Creating a second solid body	7-10
Creating a combine-common body	7-11
Finding the volume of the new body	7-12



Chapter 8:



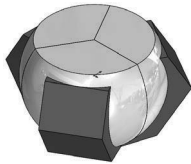
Part Modifications

Chapter summary	8-1
Tools Needed	8-2
Part modification – Challenge 1 of 3	8-3
Opening a part document	8-3
Modifying the pattern angle	8-4
Changing the pattern angle	8-5
Calculating the final mass	8-5
Part modification – Challenge 2 of 3	8-6
Opening a part document	8-6
Filling the hollow cavity	8-7
Deleting the first group of fillets	8-8
Removing the second group of fillets	8-9

CSWE I Exam Preparation I Table of Contents



Removing the third group of fillets	8-10
Modifying the base	8-11
Removing the outer portion	8-12
Adding fillets to the base	8-14
Adding fillets to other features	8-14
Shelling the part	8-15
Creating a section view	8-15
Assigning material	8-16
Calculating the final mass	8-17
Saving your work	8-17
Part Modifications – Challenge 3 of 3	8-18
Opening a part document	8-18
Creating a cut surface	8-19
Creating a circular pattern of the body	8-20
Assigning material	8-21
Calculating the final mass	8-21
Saving your work	8-22



Chapter 9:

Cut with Surface

9-1



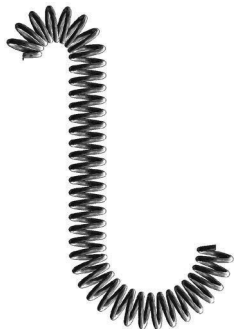
Chapter summary	9-1
Tools Needed	9-2
Opening an assembly file	9-3
Editing the PartB	9-3
Creating an offset surface	9-4
Creating a surface cut	9-5
Hiding a component	9-6
Hiding a surface	9-6
Removing the sharp edges	9-7
Exiting the edit component mode	9-8
Calculating the mass	9-8
Exercise: Cut with Surface	9-9



Chapter 10:

Creating a Curved Spring

10-1



Chapter summary	10-1
Tools Needed	10-2
Starting a new part	10-3
Creating the sweep path	10-3
Creating the sweep profile	10-4
Creating a swept feature	10-4
Assigning material	10-5

CSWE I Exam Preparation I Table of Contents



Calculating the mass	10-6
Saving your work	10-6
Exercise: Circular Spring	10-7
Spring examples	10-10

Glossary

Index

SOLIDWORKS Quick-Guides:

Quick Reference Guide to SOLIDWORKS Command Icons and Toolbars.

