

Certified SOLIDWORKS® Professional Advanced Preparation Materials

Sheet Metal, Weldments, Surfacing,
Mold Tools and Drawing Tools

SOLIDWORKS® 2017



Paul Tran CSWE, CSWI

Visit the following websites to learn more about this book:



[amazon.com](https://www.amazon.com)

[Google books](https://books.google.com)

[BARNES & NOBLE](https://www.barnesandnoble.com)

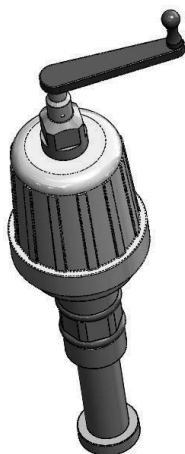
Table of Contents

CSWPA – Drawing Tools

Chapter 1: Drawing Tools 1-1

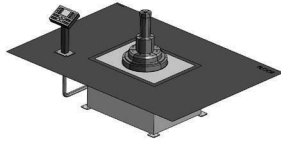


Challenge 1: Tank.sldprt	1-3
Open the part document: Tank.sldprt	1-3
Transferring to a drawing	1-3
Changing the paper size	1-4
Adding the drawing view	1-5
Creating a section view	1-6
Measuring the surface area	1-7
Creating an aligned section view	1-7
Measuring the surface area	1-9



Challenge 2: Piston Assembly.sldasm	1-10
Open the assembly document: Piston Assembly.sldasm	1-10
Creating a reference sketch	1-11
Modifying the view angle	1-12
Saving a new named-view	1-14
Making a drawing from assembly	1-15
Adding the first drawing view	1-16
Creating the projected drawing views	1-17
Adding reference lines	1-18
Converting an entity	1-19
Adding a reference dimension	1-19
Adding a top drawing view	1-20
Locking a view focus	1-21
Adding an angular dimension	1-23

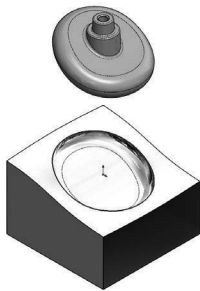
Challenge 3: Radial Stretcher.sldasm	1-24
Open the assembly document: Radial Stretcher.sldasm	1-24
Transferring to a drawing	1-24



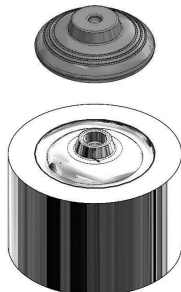
Adding drawing views from the view palette	1-25
Breaking the view alignment	1-26
Adding balloons	1-27
Adding a bill of materials	1-28
Changing custom properties	1-29
Adding a new column	1-30
Optional	1-32

CSWPA – Mold Tools

Chapter2: **Mold Tools** **2-1**



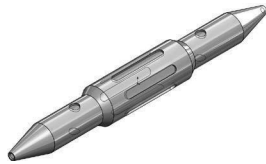
Challenge 1: Cavity Creation.sldprt	2-3
Open the document: Cavity Creation.sldprt	2-3
Enabling the mold Tools	2-3
Creating the parting line	2-3
Creating the parting surfaces	2-4
Kitting the surfaces	2-5
Creating a new plane	2-6
Sketching the mold block	2-6
Creating the cavity block	2-7
Separating the block from the part	2-7
Hiding the reference surfaces	2-9
Measuring the cavity block	2-9



Challenge 2: Plastic Cap.sldprt	2-10
Open the document: Plastic Cap.sldprt	2-10
Creating the Parting line	2-10
Creating the Parting surfaces	2-11
Knitting the surfaces	2-12
Creating a new plane	2-13
Sketching the mold block	2-14
Extruding the Core block	2-14
Separating the block from the part	2-15
Hiding the reference surfaces	2-16
Assigning material	2-16
Calculating the mass	2-17



Challenge 3: Repair Surfaces.sldprt	2-18
Open the document: Repair Surfaces.sldprt	2-18
Creating a new plane	2-18
Converting the geometry	2-19
Extruding a surface	2-20
Crating a planar surface	2-21
Knitting the surfaces	2-22
Creating a section view	2-22
Applying material	2-23
Calculating the mass	2-23



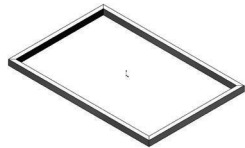
Challenge 4: Surfaces Area.sldprt	2-24
Open the document: Surfaces Area.sldprt	2-24
Creating the filled surfaces	2-24
Filling other slots	2-25
Filling the holes	2-25
Filling the ends with planar surfaces	2-26
Measuring the total surface area of the patches	2-27



Challenge 5: Wheel.sldprt	2-28
Open the document: Wheel.sldprt	2-28
Analyzing the Draft angles	2-28
Changing the draft angle	2-30

CSWPA – Weldments

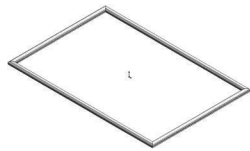
Chapter 3: Weldments **3-1**



Challenge 1: Creating the Weldments profile	3-3
Starting a new part document	3-3
Enabling the Weldments tab	3-3
Sketching the first weldment profile	3-4
Creating the second weldment profile	3-5
Sketching the profile	3-5
Showing the weldment profiles folder	3-6
Creating a new weldment part	3-7
Adding structural members	3-8
Applying material	3-9
Calculating the mass	3-9
Changing the structural members	3-10

Calculating the mass 3-11

Challenge 2: Weldment Frame 3.sldprt 3-12



Open the document: Weldment Frame 3.sldprt 3-12

Adding structural members 3-13

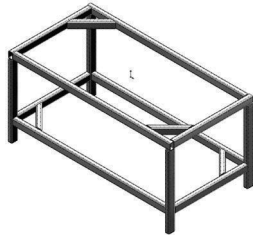
Creating the parallel group 3-14

Trimming the parallel group 3-15

Applying material 3-17

Calculating the mass 3-17

Creating the Upper Braces 3-18



Trimming the first Upper Braces 3-18

Updating the Cut list 3-20

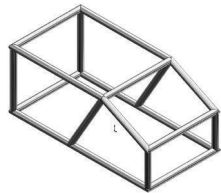
Creating the Lower Braces 3-21

Trimming the Lower Braces 3-22

Adding End Caps 3-24

Calculating the final mass 3-25

Challenge 3: Weldment Frame 4.sldprt 3-26



Open the document: Weldment Frame 4.sldprt 3-26

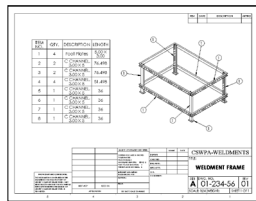
Creating a 3D sketch 3-26

Adding structural members 3-31

Creating the parallel group 3-32

Trimming the tubes 3-33

Challenge 4: Weldment Frame 5.sldprt 3-37



Open the document: Weldment Frame 5.sldprt 3-37

Assigning material 3-37

Modifying the properties 3-38

Transferring to a drawing 3-39

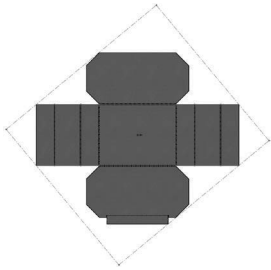
Adding a drawing view 3-39

Inserting the weldment cut list 3-40

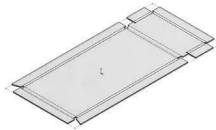
Adding balloons 3-41

CSWPA – Sheet Metal

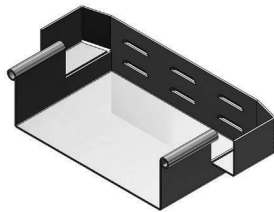
Chapter 4: Sheet Metal 4-1



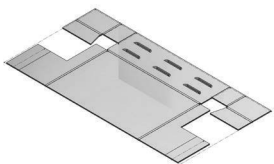
Challenge 1: Converting to Sheet Metal	4-3
Opening the document: Convert to SM.sldprt	4-3
Enabling the sheet metal tab	4-3
Making a copy of the solid model	4-3
Converting to sheet metal	4-5
Calculating the mass	4-6
Measuring the flat pattern	4-7
Creating a Hem	4-8
Calculating the mass	4-10



Challenge 2: Sheet Metal Cut List.sldprt	4-11
Open the document: SM Cut List.sldprt	4-11
Modifying the first bend radius	4-11
Measuring the flat length	4-12
Modifying the second bend radius	4-13
Measuring the flat length	4-13
Finding the Bounding Box Area	4-14



Challenge 3: Sheet Metal Part.sldprt	4-15
Open the document: SM Part.sldprt	4-15
Creating the Edge Flanges	4-15
Closing the corners	4-16
Creating a cutout	4-17
Adding a Miter Flange	4-18
Mirroring the features	4-22
Calculating the mass	4-23
Changing the K-Factor value	4-24
Measuring the flat length	4-24
Adding hems	4-25
Adding a form feature	4-26
Creating a linear pattern	4-27
Calculating the mass	4-27



CSWPA – Surfacing

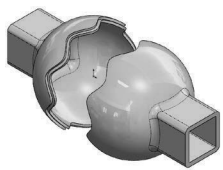
Chapter 5: Surfacing 5-1



Challenge 1: Inlet-Outlet Patches.sldprt	5-3
Open the document: Inlet-Outlet Patches.sldprt	5-3
Enabling the surfaces tab	5-3
Patching the first opening	5-4
Measuring the surface area	5-5
Deleting the outlet port	5-5
Filling the openings	5-6
Measuring the surface area	5-7
Thickening the surface body	5-8
Creating a section view	5-8
Calculating the mass	5-9



Challenge 2: Mouse from Sketch Picture.sldprt	5-10
Open the document: Mouse from Sketch Picture.sldprt	5-10
Examining the sketch pictures	5-10
Tracing the profile	5-11
Extruding a surface	5-11
Trimming the surfaces	5-13
Creating the boundary profiles	5-15
Hiding and suppressing the references	5-17
Creating the boundary surfaces	5-18
Creating a filled surface	5-22
Creating a knit surface	5-23
Mirroring the surface bodies	5-23
Thickening the surface body	5-24
Assigning material	5-27
Calculating the mass	5-28



Challenge 3: Plastic Ball.sldprt	5-29
Open the document: Plastic Ball.sldprt	5-29
Hiding the solid body	5-29
Extruding the surface	5-30
Trimming the surfaces	5-31
Making a copy of the solid body	5-32
Cutting the surface	5-33
Extending the offset surface	5-36

Measuring the surface area 5-39



Challenge 4: Tube Patches.sldprt 5-40

Open the document: Tube Patches.sldprt 5-40

Trimming the surface body 5-42

Measuring the surface area 5-44

Creating the lofted surfaces 5-45

Creating the filled surfaces 5-47

Measuring the total surface area 5-53

Challenge 5: Remote Body.sldprt 5-54



Open the document: Remote Body.sldprt 5-54

Tracing the sketch picture 5-54

Creating a 3D sketch 5-55

Creating a lofted surface 5-56

Measuring the surface area 5-57

Knitting the surfaces 5-58

Mirroring the surface body 5-59

Thickening the surface body 5-60

Creating a section view 5-60

Calculating the final mass 5-61

**Glossary
Index**

SOLIDWORKS 2017 Quick-Guides:

Quick Reference Guide to SOLIDWORKS 2017 Command Icons and Toolbars.

