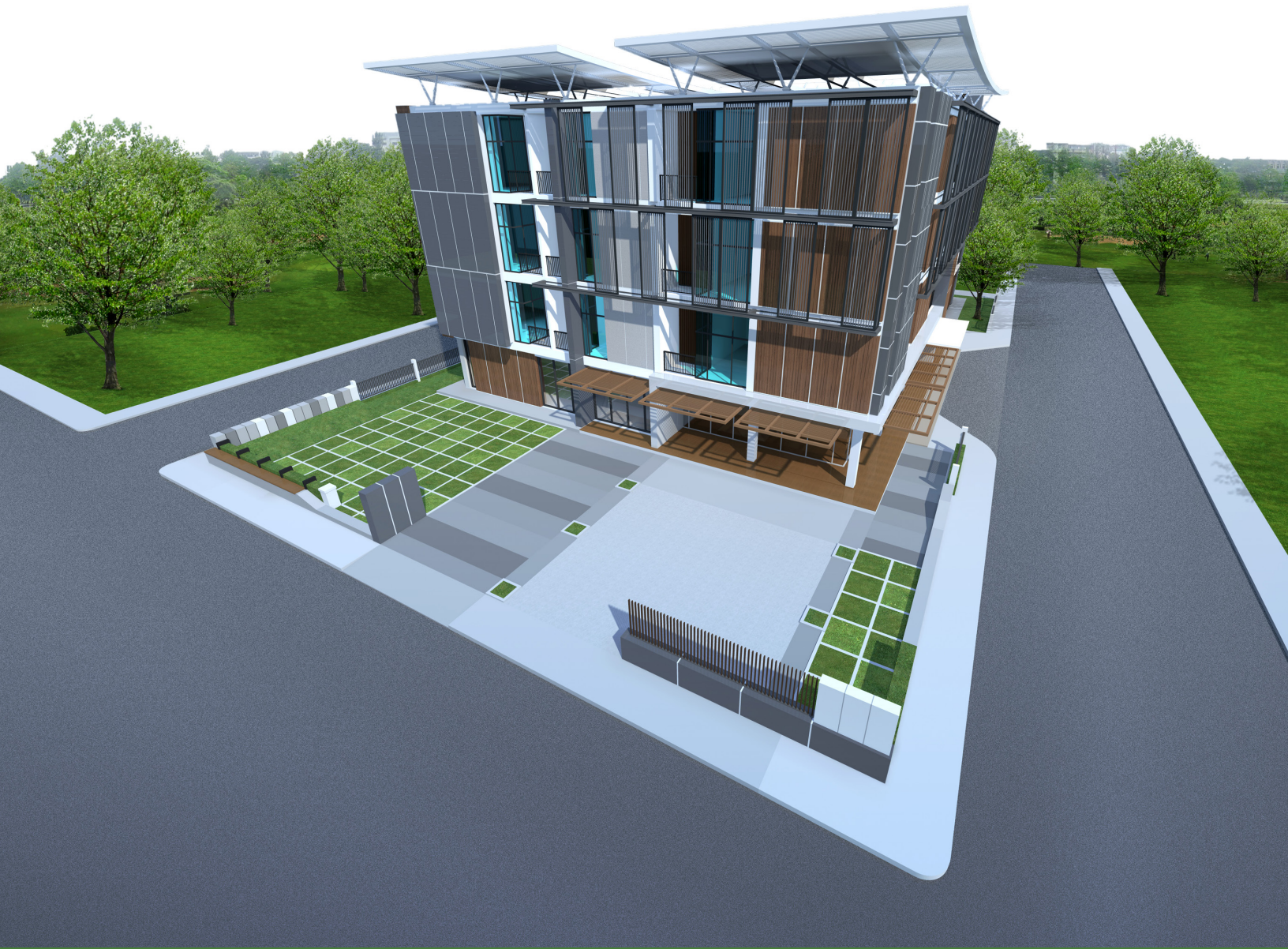


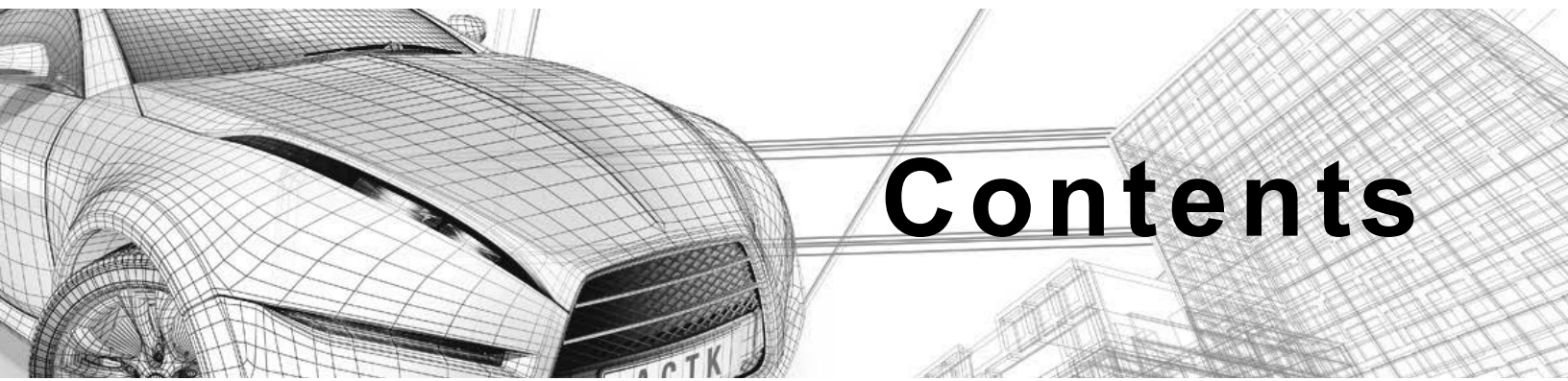
Autodesk®

3ds Max® 2018 Fundamentals



Visit the following websites to learn more about this book:





Contents

Preface	ix
In this Guide	xi
Practice Files	xv
Chapter 1: Introduction to Autodesk 3ds Max	1-1
1.1 Overview	1-2
1.2 Visualization Workflow	1-4
1.3 The Autodesk 3ds Max Interface	1-6
Welcome Screen	1-6
Interface	1-7
1.4 File Commands	1-28
Create New Scenes	1-28
Open and Save Files.....	1-29
Preferences	1-30
Setting the Project Folder.....	1-32
1.5 Configure Paths	1-33
1.6 Display Drivers	1-36
1.7 Viewport Display and Labels	1-37
General Viewport	1-37
Point Of View	1-38
Shading Viewport.....	1-39
Per-View Preference	1-40
Practice 1a Organizing Folders and Working with the Interface	1-43
Practice 1b Autodesk 3ds Max Quickstart	1-54
Chapter Review Questions	1-62
Command Summary	1-64

Chapter 2: Autodesk 3ds Max Configuration	2-1
2.1 Viewport Navigation	2-2
Viewport Navigation Toolbar	2-2
Viewport Navigation Toolbar (Camera Viewport).....	2-4
Viewport Navigation Using the ViewCube.....	2-4
Viewport Navigation Using the SteeringWheel	2-5
2.2 Viewport Configuration and Settings	2-6
Viewport Configuration.....	2-6
Viewport Setting and Preferences.....	2-9
Practice 2a Viewport Configuration and Navigation	2-11
2.3 Object Selection Methods	2-16
Practice 2b Selection Methods	2-20
2.4 Units Setup	2-26
Practice 2c Working with Units Setup	2-28
2.5 Layer and Object Properties	2-29
Layers Toolbar	2-29
Layer Explorer.....	2-30
Layer Properties.....	2-32
Object Properties	2-32
Display Panel	2-34
Practice 2d Layer and Object Properties	2-35
Chapter Review Questions	2-40
Command Summary	2-42
Chapter 3: Assembling Project Files	3-1
3.1 Data Linking and Importing	3-2
Linking vs. Importing	3-2
Editing Linked Data.....	3-3
Importing	3-4
Merging Autodesk 3ds Max Scene Files.....	3-4
Civil View.....	3-4
Practice 3a Ground Surfaces using Civil View	3-7
3.2 Linking Files	3-13
Linking DWG Files	3-13
Linking FBX and RVT Files	3-13
Manage Links Options	3-14
File Link Settings: DWG Files	3-16
File Link Settings: Revit Files (RVT or FBX)	3-21
Practice 3b Linking an AutoCAD DWG	3-23
Practice 3c Linking and Reloading Autodesk Revit File	3-29

3.3	References	3-35
	External References (XRef)	3-35
	Data Management and Asset Tracking	3-35
	Practice 3d XRef and Merge Objects	3-37
	Chapter Review Questions	3-43
	Command Summary	3-44
Chapter 4:	Basic Modeling Techniques	4-1
4.1	Model with Primitives	4-2
	Practice 4a Modeling with Primitives	4-4
4.2	Modifiers and Transforms	4-8
	Modifiers	4-8
	Transform Tools	4-9
	Practice 4b Modeling with Modifiers and Transforms	4-13
4.3	Sub-Object Mode	4-24
	Working in Sub-Object Mode	4-24
	Geometric Edits through Sub-objects	4-25
	Geometric Sub-Objects	4-26
	Smoothing	4-26
	Caddy Display for Edit Poly Modifier	4-27
	Practice 4c Modeling with Edit Poly in Sub-Object Mode	4-29
4.4	Reference Coordinate Systems and Transform Centers	4-34
	Reference Coordinate Systems	4-34
	Transform Centers	4-36
4.5	Cloning and Grouping	4-37
	Cloning	4-37
	Grouping	4-38
	Practice 4d Modeling with Coordinate Systems	4-40
	Practice 4e Cloning and Grouping	4-42
4.6	Polygon Modeling Tools in the Ribbon	4-47
	Practice 4f (Optional) Poly Modeling Using the Ribbon	4-48
4.7	Statistics in Viewport	4-63
	Chapter Review Questions	4-65
	Command Summary	4-67
Chapter 5:	Modeling From 2D Objects	5-1
5.1	3D Modeling from 2D Objects	5-2
	Practice 5a Drawing Lines	5-4

5.2 The Lathe Modifier	5-11
Practice 5b Creating a Candlestick	5-12
5.3 2D Booleans	5-14
Practice 5c 2D Booleans.....	5-15
5.4 The Extrude Modifier	5-19
5.5 3D Boolean Operations	5-22
Practice 5d Extrude Walls and Create Wall Openings.....	5-26
5.6 Using Snaps for Precision	5-34
Practice 5e Creating a Door with Snaps	5-38
5.7 The Sweep Modifier	5-44
Sweep Parameters.....	5-45
Practice 5f Sweeping the Wall Baseboard	5-47
Chapter Review Questions.....	5-53
Command Summary	5-55
Chapter 6: Materials	6-1
6.1 Understanding Materials and Maps.....	6-2
Introduction to Materials.....	6-2
Material Components	6-3
6.2 Material Shaders	6-6
Shader (Specific) Basic Parameters	6-7
6.3 Managing Materials.....	6-10
Slate Material Editor Interface.....	6-10
Practice 6a Introduction to Materials	6-19
6.4 General Materials	6-27
Physical Materials	6-27
Multi/Sub- Object Materials	6-30
Additional General Materials	6-31
6.5 Scanline Materials.....	6-32
6.6 Autodesk Materials	6-34
6.7 Assigning Maps to Materials.....	6-36
Practice 6b Working with Standard Materials and Maps.....	6-39
Practice 6c Working with Multi/Sub-Object Materials.....	6-50
6.8 Opacity, Bump, and Reflection Mapping	6-60
Opacity Mapping	6-60
Bump Mapping	6-61
Reflection Mapping	6-61

Practice 6d Texture Mapping with Physical Material	6-62
6.9 Arnold Materials	6-69
Practice 6e Working with Arnold Materials.....	6-72
Practice 6f Materials that Create Lighting.....	6-78
6.10 The Material Explorer.....	6-81
6.11 Scene Converter.....	6-83
Chapter Review Questions.....	6-87
Command Summary	6-89
Chapter 7: Mapping Coordinates and Scale	7-1
7.1 Mapping Coordinates	7-2
Mapping Controls in Slate Material Editor.....	7-3
MapScaler Modifier	7-4
UVW Map Modifier	7-5
Practice 7a Applying Mapping Coordinates	7-6
Practice 7b Mapping a Large Scale Image.....	7-9
7.2 Mapping Scale	7-13
Explicit Map Scaling	7-13
Continuous Map Scaling	7-14
Practice 7c Assigning Map Scales	7-16
7.3 Spline Mapping.....	7-22
Practice 7d Spline Mapping.....	7-23
Chapter Review Questions.....	7-29
Chapter 8: Introduction to Lighting	8-1
8.1 Local vs. Global Illumination	8-2
Default Illumination.....	8-2
Local Illumination	8-2
Global Illumination.....	8-3
Types of Lights.....	8-4
8.2 Standard Lighting	8-5
Common Parameters	8-6
8.3 Types of Standard Lights	8-8
Omni Lights	8-8
Spotlights	8-8
Directional Lights.....	8-10
Fill Lights	8-11
Skylight.....	8-11

Practice 8a Standard Lighting for an Interior Scene	8-12
8.4 Shadow Types	8-26
Common Shadow Parameters	8-28
Shadow Map Parameters.....	8-29
Ray Traced Shadows.....	8-30
Advanced Ray-Traced Shadows.....	8-30
Practice 8b Working with Shadow Parameters	8-32
Chapter Review Questions	8-35
Command Summary	8-37
Chapter 9: Lighting and Cameras	9-1
9.1 Photometric Light Objects	9-2
Photometric Light Types	9-2
Templates Rollout	9-3
General Parameters Rollout.....	9-3
Distribution (Photometric Web) Rollout	9-4
Shape/Area Shadows Rollout	9-6
Intensity/Color/Attenuation Rollout.....	9-8
Practice 9a Working with Photometric Lights	9-10
9.2 Arnold Lights	9-20
Practice 9b Working with Arnold Lights	9-22
9.3 Cameras	9-26
Physical Camera	9-26
Target and Free Camera Parameters	9-28
9.4 Background Images	9-32
Aspect Ratio.....	9-34
Safe Frames.....	9-35
Practice 9c Cameras and Background Images	9-38
Chapter Review Questions	9-48
Command Summary	9-49
Chapter 10: Exposure Control, Daylight, and Rendering	10-1
10.1 Exposure Control	10-2
Exposure Control Methods.....	10-2
Logarithmic Exposure Control Parameters	10-4
Physical Camera Exposure Control	10-5
10.2 Daytime Lighting	10-6
Sun Positioner Daylight System	10-6
Sunlight and Skylight System.....	10-8
Image Based Lighting	10-12

Practice 10a Image Based Lighting	10-13
Practice 10b Lighting with Sun Positioner	10-19
10.3 Rendering Options	10-24
Common Options	10-25
Common Tab	10-27
Renderer Tab	10-28
10.4 Arnold Renderer	10-29
Arnold Renderer Tab	10-30
System Tab	10-32
Archive Tab	10-32
Diagnostics Tab	10-33
AOV Settings Tab	10-33
Practice 10c Working with Arnold Renderer	10-34
10.5 Scanline Renderer	10-40
Single vs. Double-Sided in Scanline Rendering	10-43
10.6 ART Renderer	10-47
Practice 10d Working with Scanline Rendering Options	10-49
10.7 State Sets	10-57
10.8 The Print Size Wizard	10-61
Practice 10e Using the Print Size Wizard	10-62
Chapter Review Questions	10-64
Command Summary	10-66
Chapter 11: Animation	11-1
11.1 Animation and Time Controls	11-2
Time Configuration	11-6
Progressive Display and Adaptive Degradation	11-10
11.2 Walkthrough Animation	11-13
Practice 11a Creating a Turntable Animation	11-15
Practice 11b Keyframing a Camera Animation	11-24
Practice 11c Creating a Walkthrough Animation	11-31
11.3 Animation Output	11-36
Practice 11d Creating Animation Output	11-39
Chapter Review Questions	11-44
Command Summary	11-46

Appendix A: Optional Topics	A-1
A.1 Getting Help with Autodesk 3ds Max	A-2
A.2 Compact Material Editor	A-4
A.3 Architectural Materials	A-7
A.4 Object Substitution	A-9
Practice A1 Substituting the Parking Lot Light Poles	A-10
A.5 Creating Hierarchies	A-13
Practice A2 Create Hierarchies	A-14
Practice A3 Create an Assembly Animation.....	A-17
A.6 Customizing the User Interface	A-19
Practice A4 Customizing the User Interface.....	A-21
Command Summary	A-24
Appendix B: Optional Practices	B-1
Practice B1 Create Additional Extrusions	B-2
Practice B2 Making a Chair Base by Lofting Objects	B-5
Practice B3 Shadow Study Animation	B-11
Appendix C: Autodesk 3ds Max Certification Exam Objectives	C-1
Index	Index-1