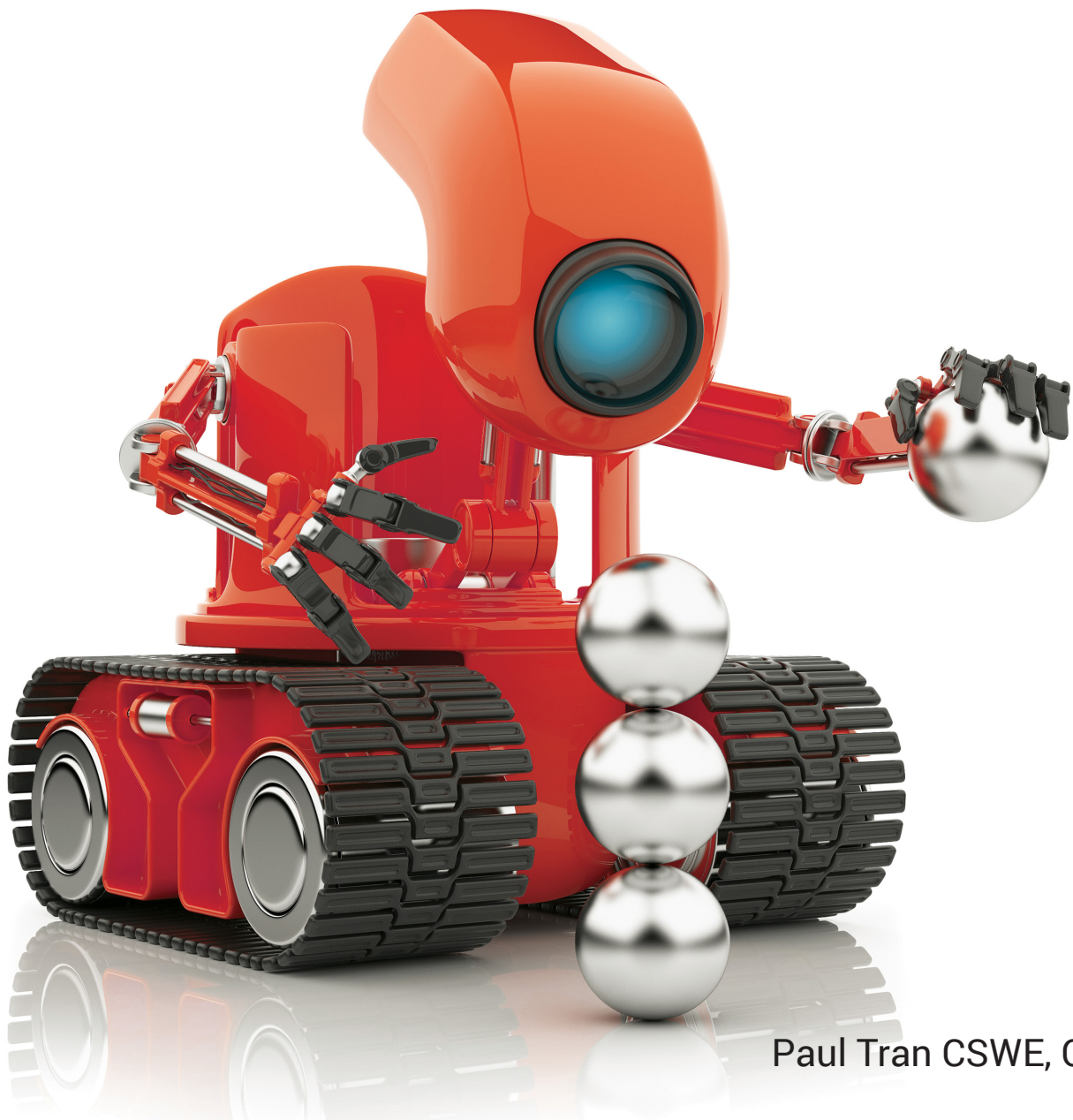


Certified SOLIDWORKS® Expert Preparation Materials

SOLIDWORKS® 2018



Paul Tran CSWE, CSWI

Visit the following websites to learn more about this book:



[amazon.com](https://www.amazon.com)

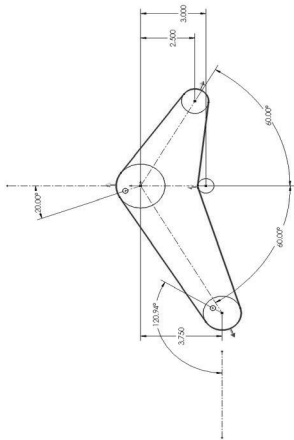
[Google books](https://books.google.com)

[BARNES & NOBLE](https://www.barnesandnoble.com)

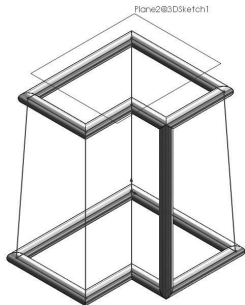
Table of Contents

Introduction: Are You the Next CSWE?

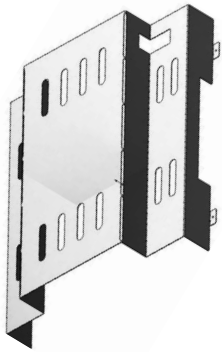
Chapter 1:	Using Belt Chain	1-1
	Chapter summary	1-1
	Tools Needed	1-2
	Starting a new part template	1-3
	Creating the main sketch	1-3
	Making the blocks	1-4
	Creating a belt chain	1-5
	Adding the angular dimensions	1-7
	Applying dimension changes	1-8
	Checking the belt length	1-9
	Changing the pulley's angle	1-9
	Verifying the new belt length	1-10
	Exercise: Creating a belt chain	1-11



Chapter 2:	Advanced Weldments	2-1
	Chapter summary	2-1
	Tools Needed	2-2
	Starting a new part template	2-3
	Creating a 3D sketch	2-3
	Creating the 2 nd portion of the 3D sketch	2-6
	Connecting the sketch entities	2-7
	Adding the structural members	2-8
	Assigning the material	2-9
	Calculating the mass	2-10
	Adding more groups	2-11
	Calculating the mass	2-12
	Modifying the dimensions	2-13
	Calculating the mass	2-14



Chapter 3:	Advanced Sheet Metal	3-1
	Chapter summary	3-1
	Tools Needed	3-2
	Opening an IGES document	3-3
	Changing the display style	3-4



Enabling the sheet metal tool tab	3-5
Converting to sheet metal	3-5
Measuring the flat length	3-6
Unfolding the bends	3-7
Extruding a cut	3-8
Folding the bends	3-8
Assigning material	3-9
Calculating the mass	3-9

Chapter 4: Cam Motions 4-1

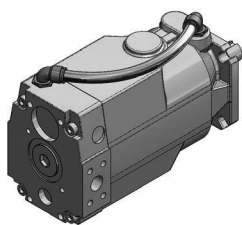
Chapter summary	4-1
Tools Needed	4-2
Opening an assembly document	4-3
Adding a tangent mate	4-4
Measuring the minimum distance	4-5
Measuring the maximum distance	4-6

Chapter 5: Assembly Drawings & BOMs 5-1



Chapter summary	5-1
Tools Needed	5-2
Opening an assembly document	5-3
Transferring to a drawing	5-4
Adding an isometric drawing view	5-5
Adding a Bill of Materials	5-6
Changing the column property	5-7
Locating the quantity	5-7
Creating another custom property	5-7
Locating the finish	5-8
Changing the BOM type	5-9
Locating the sub-components	5-9

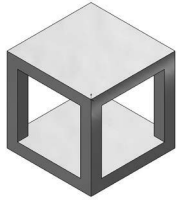
Chapter 6: Assembly Modifications 6-1



Chapter summary	6-1
Tools Needed	6-2
Opening an assembly document	6-3
Creating a new plane	6-3
Creating a new component	6-4
Creating a fit spline	6-6
Creating a new plane	6-7
Sketching the sweep profile	6-7
Creating the sweep	6-8
Assigning material	6-9

Calculating the mass 6-9

Chapter 7:



Using Combine Common 7-1

Chapter summary 7-1

Tools Needed 7-2

Using Combine Common – Part 1 7-3

Starting a new part document 7-3

Creating the 1st solid body 7-3

Creating the 2nd solid body 7-5

Creating a combine common body 7-6

Finding the volume of the new body 7-7

Using Combine Common – Part 2 7-8

Starting a new part document 7-8

Creating the two solid bodies 7-8

Using the combine common option 7-11

Finding the volume of the new body 7-12

Using Combine Common – Part 3 7-13

Adding an Angle & Depth chamfer 7-14

Changing to a Distance & Distance chamfer 7-14

Creating an Offset Face chamfer 7-15

Changing to a Face-Face chamfer 7-15

Creating a Split Line 7-16

Creating a Parting Line Draft 7-17

Assigning material 7-18

Calculating the mass 7-18



Chapter 8:

Part Modifications 8-1

Chapter summary 8-1

Tools Needed 8-2

Part Modifications – Challenge 1 of 5 8-3

Modifying the pattern angle 8-4

Changing the pattern angle 8-5

Calculating the final mass 8-5

Part modifications – Challenge 2 of 5 8-6

Filling the hollow cavity 8-7

Deleting the fillets 8-8

Modifying the base 8-11

Removing the outer portion 8-12

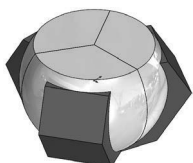
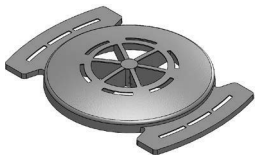
Adding fillets 8-14

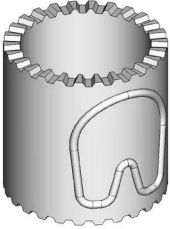


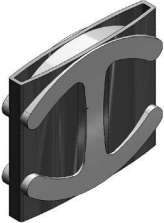

Shelling the part 8-15

Creating a section view 8-15

Assigning material 8-16

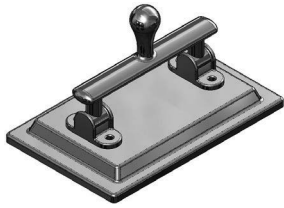
Calculating the final mass 8-17



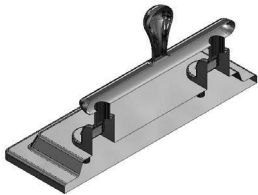
	Part Modifications – Challenge 3 of 5	8-18
	Creating a cut feature	8-19
	Making a Circular Pattern of the body	8-20
	Assigning material	8-21
	Calculating the final mass	8-21
	Part Modifications – Challenge 4 of 5	8-22
	Converting the outline of the pattern	8-22
	Removing the raised pattern	8-24
	Extruding a cut	8-24
	Creating a sweep path	8-25
	Creating a swept feature	8-26
	Calculating the mass	8-27
	Part Modifications – Challenge 5 of 5	8-29
	Creating an offset surface	8-29
	Creating a surface fill	8-30
	Creating a lofted feature	8-30
	Creating the new cut profile	8-31
	Adding fillets	8-32
		
		
Chapter 9:	Cut with Surface	9-1
	Chapter summary	9-1
	Tools Needed	9-2
	Opening an assembly file	9-3
	Editing the PartB	9-3
	Creating an offset surface	9-4
	Creating a surface cut	9-5
	Hiding a component	9-6
	Hiding a surface	9-6
	Removing the sharp edges	9-7
	Exiting the component mode	9-8
	Calculating the mass	9-8
	Exercise: Cut with Surface	9-9
		
		
Chapter 10:	Creating a Curved Spring	10-1
	Chapter summary	10-1
	Tools Needed	10-2
	Starting a new part	10-3
	Creating the sweep path	10-3
	Creating the sweep profile	10-4
	Creating a swept feature	10-4
	Assigning material	10-5
	Calculating the mass	10-6
	Exercise: Circular Spring	10-7
		

Spring examples 10-10

Chapter 11: Surface Modifications 11-1



Opening a part document	11-3
Deleting the faces of the model	11-3
Measuring the current angle	11-4
Rotating the handle	11-5
Recreating the deleted surfaces	11-6
Hiding a surface body	11-8
Trimming surfaces	11-9
Showing a surface body	11-10
Knitting all surface bodies	11-10
Creating a section view	11-11
Measuring the mass	11-11



Glossary
Index
Quick-Guides

