

SOLIDWORKS® 2018 Advanced Techniques

Mastering Parts, Surfaces, Sheet Metal,
SimulationXpress, Top Down Assemblies,
Core & Cavity Molds



Paul Tran CSWE, CSWI

Visit the following websites to learn more about this book:



[amazon.com](https://www.amazon.com)

[Google books](https://books.google.com)

[BARNES & NOBLE](https://www.barnesandnoble.com)

Table of Contents

Introduction: SOLIDWORKS 2018 User Interface

XXI

The 3 reference planes

XXII

The toolbars

XXIII

The system feedback symbols

XXIV

The status bar

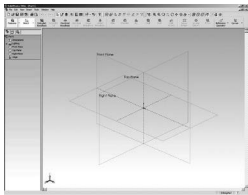
XXIV

2D sketch examples

XXV

3D feature examples

XXVI



Advanced Modeling Topics

Chapter 1: Introduction to 3D Sketch

1-1

Tools Needed

1-2

Creating a 3D sketch

1-3

Using the tab key

1-4

Completing the profile

1-4

Adding dimensions

1-5

Adding the sketch fillets

1-6

Creating the swept feature

1-7

Questions for review

1-8

Exercise: Sweep with 3D Sketch

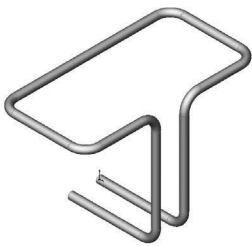
1-9

Exercise: 3D Sketch & Planes

1-10

Exercise: 3D Sketch & Composite Curve

1-17



Chapter 2: Plane Creation

2-1

Advanced Topics

2-2

Tools Needed

2-2

Starting with a new part document

2-3

Revolving the base

2-3

Creating a tangent plane

2-4

Creating a flat surface

2-5

Extruding a cut

2-6

Creating an at-angle plane

2-7



Showing the sketches	2-8
Creating a coincident plane	2-9
Creating a parallel plane	2-10
Creating the recess	2-11
Creating an offset-distance plane	2-12
Creating the bore holes	2-12
Creating a perpendicular plane	2-13
Creating the side-grips	2-14
Creating a circular pattern of the grips	2-15
Creating a Mid-Plane	2-17
Adding fillets to all edges	2-19
Questions for Review	2-20
Exercise: Creating new planes	2-22

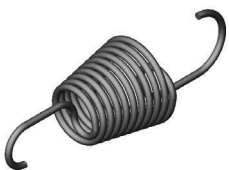
Chapter 3: Advanced Modeling 3-1

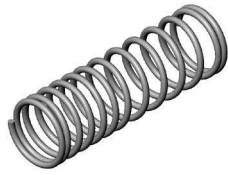
5/8" Spanner	3-2
Tools needed	3-2
Opening the spanner sketch document	3-3
Arc conditions	3-3
Creating the transition sketch	3-4
Creating a new work plane	3-6
Creating the closed-end sketch	3-7
Extruding the closed-end feature	3-7
Adding a 12-sided polygon hole	3-8
Creating the recess profile	3-9
Mirroring the recessed feature	3-10
Adding fillets	3-11
Adding text	3-13
Extruding the text	3-14
Questions for Review	3-17
Exercise: Circular text wraps	3-19



Chapter 4: Sweep with Composite Curves 4-1

Helical Extension Spring	4-2
Tools needed	4-2
Sketching the first profile	4-3
Converting the circle into a helix	4-3
Creating a 2-degree plane	4-4
Sketching the large loop	4-5
Sketching the large hook	4-5
Creating a parallel plane	4-6





Creating a Composite Curve	4-8
Sweeping the profile along the path	4-11
Other spring examples	4-12
Questions for review	4-13
Exercise: Circular Spring – 180 deg.	4-14

Using Variable Pitch 4-17



Multi-Pitch Spring with Closed Ends	4-18
Tools Needed	4-18
Creating the base sketch	4-19
Creating a helix with variable pitch	4-19
Sweeping the profile along the path	4-21
Creating a trimmed sketch	4-22
Extruding a cut	4-22
Questions for Review	4-23
Exercise: Projected Curve & Composite Curve	4-24

Chapter 5: Advanced Modeling with Sweep & Loft 5-1

Water Pump Housing 5-2



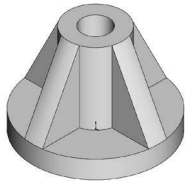
Tools Needed	5-2
Understanding the draft options	5-3
Opening a part document	5-4
Sketching the upper inlet port	5-5
Adding fillets	5-6
Creating offset-distance planes	5-7
Creating a loft feature	5-10
Creating the mounting bosses	5-11
Sketching the rear inlet port	5-12
Revolving the rear inlet port	5-12
Adding face Fillets	5-13
Mirroring the rear inlet port	5-15
Shelling the part	5-16
Adding a rib	5-17
Mirroring the rib	5-18
Adding fillets	5-19

Chapter 6: Loft vs. Sweep 6-1

Water Meter Housing 6-1

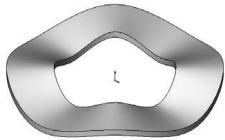


Tools Needed	6-2
Constructing the body	6-3
Creating an offset distance plane	6-5

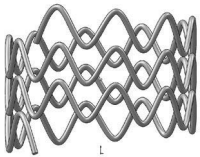


Constructing loft profiles / features	6-6
Constructing the Inlet / outlet profiles	6-6
Constructing the centerline parameter	6-10
Creating the outlet loft feature	6-11
Shelling the part	6-13
Extruding the left / right brackets	6-14
Constructing the upper ring	6-15
Adding fillets / chamfers	6-17
Questions for Review	6-19
Exercise: Loft	6-20

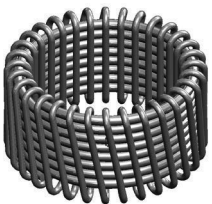
Chapter 7: Loft with Guide Curves **7-1**



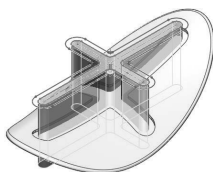
Waved Washer	7-1
Tools Needed	7-2
Creating the construction profiles	7-3
Creating an offset distance plane	7-4
Creating a derived sketch	7-4
Creating a curve through reference points	7-5
Sketching the loft sections	7-7
Creating the derived sketches	7-7
Creating a loft with guide curve	7-10
Showing / hiding sketches	7-11
Questions for Review	7-12
Exercise: Using Curve Driven Pattern	7-13



Advanced Sweep	7-20
Wire Form	7-20
Tools Needed	7-20
Creating the sweep path	7-21
Creating the sweep profile	7-22
Creating the sweep feature	7-23
Creating a circular sketch pattern	7-25
Creating a derived sketch	7-27
Creating a 3D sketch	7-28
Creating the sweep feature	7-32
Exercise: Using Curve Through Reference Points	7-33



Chapter 8: Using Surfaces **8-1**



Advanced Modeling	8-1
Tools Needed	8-2
Constructing the loft profiles	8-3



Creating a surface-loft	8-6
Splitting the surface	8-7
Deleting surfaces	8-8
Thickening the surface	8-9
Calculating the angle between the faces	8-10
Draft Analysis	8-11
Adding a full round fillet	8-12
Sketching the slot contours	8-13
Questions for Review	8-17



Lofted Surface	8-19
Creating new offset planes	8-19
Sketching the loft profiles	8-20
Selecting the loft profiles	8-21
Lofting between the profiles	8-22
Creating a revolved surface	8-23
Copying the revolved surface	8-24
Trimming the base part	8-25
Hiding the surface	8-25
Filling the openings with surface-fill	8-26
Creating a surface-knit	8-29
Adding fillets	8-30
Creating a solid from the surface model	8-31
Removing the upper half	8-32
Questions for Review	8-36
Exercise: Loft & Delete Face	8-37



Chapter 9: Advanced Surfaces 9-1

Using Offset Surface & Ruled Surface	9-1
Tools Needed	9-2
Using offset surface and ruled surface options	9-3
Creating the base loft	9-4
Creating the splitting lines	9-5
Creating offset surfaces	9-6
Creating ruled surfaces	9-7
Knitting the surfaces	9-8
Creating the surface cut	9-10
Exercise: Advanced Surfaces	9-13
Exercise: Advanced Surfacing Techniques	9-15



Chapter 10: Using Filled Surfaces **10-1**



Patch with Curvature Controls	10-1
Tools Needed	10-2
Enabling the surfaces toolbar	10-3
Creating a planar surface	10-4
Creating a surface fill with tangent control	10-4
Creating a surface fill with curvature control	10-6
Knitting all surfaces	10-7
Questions for Review	10-10



Boundary and Freeform Surfaces	10-11
Creating the 1st boundary surface	10-11
Creating the 2nd boundary surface	10-14
Creating the Freeform feature	10-16

Chapter 11: Surfaces vs. Solid Modeling **11-1**



Safety Helmet	11-1
Tools Needed	11-2
Constructing the body of Helmet	11-3
Creating a new work plane	11-4
Sketching the sweep-profile	11-4
Creating the sweep-path	11-5
Adding a planar surface	11-6
Knitting the surfaces bodies	11-6
Adding an extruded cut feature	11-7
Adding a revolve cut feature	11-9
Creating the Cut-out slot	11-11
Creating a sweep cut	11-13
Adding fillets	11-13
Exercise: Advanced Loft – Turbine Blades	11-15
Exercise: Advanced Sweep – Candle Holder	11-16



Advanced: Final Exam **11-23**

Chapter 12: SimulationXpress **12-1**



Using the Analysis Wizard	12-1
Tools Needed	12-2
Starting SimulationXpress	12-3
Setting up the units	12-4
Adding a fixture	12-5



Applying a force	12-7
Selecting the material	12-8
Analyzing the model	12-9
Viewing the Results	12-10
Generating the report	12-12
Generating the eDrawings file	12-16
Questions for Review	12-19
Exercise 1: SimulationXpress: Force	12-20
Exercise 2: SimulationXpress: Pressure	12-21

Sheet Metal Topics

Chapter 13: Sheet Metal Parts 13-1

Post Cap 13-1

Tools Needed 13-2

Starting with the Base Sketch 13-3

Extruding the Base Flange 13-3

Creating an Edge Flange 13-4

Editing the Edge Flange Profile 13-5

Viewing the Flat Pattern 13-6

Changing the Fixed face 13-6

Creating a Sketch Bend 13-7

Adding the side Holes 13-11

Making the Flat Pattern 13-12

Using Sheet Metal Costing 13-13

Inputting the information 13-14

Setting the Baseline 13-15

Questions for Review 13-17

Vents 13-18

Tools Needed 13-19

Sketching the first profile 13-20

Extruding the Base-Flange 13-21

Creating the Miter-Flanges 13-22

Flattening the Part 13-24

Creating a new Forming Tool 13-25

Other Rectangle Options 13-26

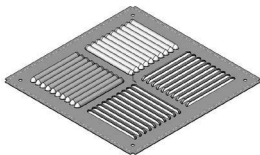
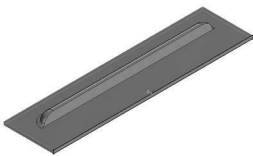
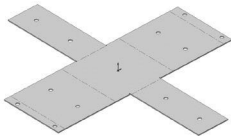
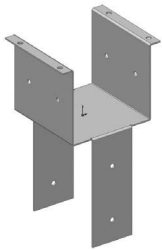
Generating the Position Sketch 13-31

Saving the Forming Tool 13-33

Applying the Form Tool 13-34

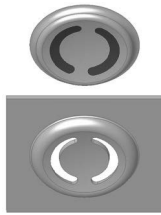
Positioning the Form Tool 13-35

Adding a mounting hole 13-36



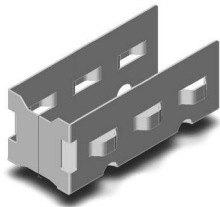
Creating a Linear Pattern	13-37
Creating an Axis	13-38
Creating a Circular Pattern	13-39
Questions for Review	13-40

Chapter 14: Sheet Metal Forming Tools 14-1



Button with Slots	14-1
Tools Needed	14-2
Creating the base block	14-3
Revolving the Body	14-4
Sketching Slot profiles	14-5
Creating the Split Lines	14-7
Inserting the forming tool feature	14-9
Saving the forming tool	14-10
Questions for Review	14-12

Designing Sheet Metal Parts 14-13

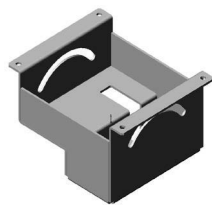


Mounting Tray	14-14
Tools Needed	14-14
Extruding the Base Flange	14-15
Creating an Edge Flange	14-16
Adding Cut features	14-17
Using the unfold command	14-18
Link to thickness	14-19
Using the Fold command	14-20
Inserting a sheet metal forming tool	14-23
Creating the Linear Pattern	14-26
Mirroring the Body	14-27
Adding Chamfers	14-30
Switching to the Flat Pattern	14-31
Questions for Review	14-32

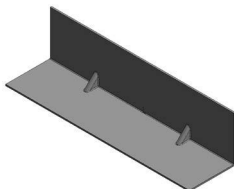


Chapter 15: Sheet Metal Conversions 15-1

From IGES to SOLIDWORKS 15-1

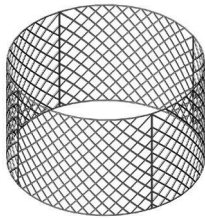


Tools Needed	15-2
Opening an IGES Document	15-3
Creating the Rips	15-4
Inserting the Sheet Metal Parameters	15-5
Adding Fillets	15-6
Switching to the Flat Pattern	15-7
Questions for Review	15-8



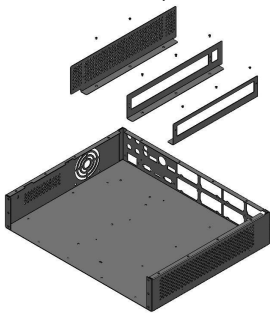


Sheet Metal Gussets	15-9
Opening a sheet metal part document	15-9
Creating a gusset	15-9
Viewing the resulted gusset	15-11
Mirroring the gusset	15-12



Flat Pattern Stent	15-13
Flat Pattern Approach	15-14
Tools Needed	15-14
Converting to Sheet Metal	15-16
Unfolding the part	15-16
Adding the sketch Pattern	15-17
Folding the Part	15-19
Creating a new Configuration	15-20
Adding Fillets	15-20
Switching to Flatten Mode	15-21
Questions for Review	15-22
Exercise: Stent Sample - Sheet Metal Approach	15-23

Chapter 16: Working with Sheet Metal STEP Files **16-1**

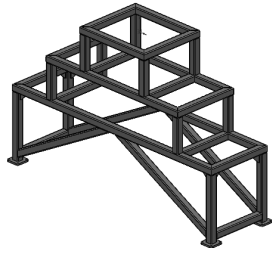


Tools Needed	16-2
Sheet Metal STEP Files and Smart Fasteners	16-3
Opening an Assembly Step File	16-3
Mating the components	16-4
Adding the Sheet Metal tool tab	16-7
Inserting Sheet Metal parameters	16-8
Viewing the Flat Pattern	16-9
Converting other components	16-9
Using the Hole Series	16-11
Using the Hole Wizard	16-13
Adding the Smart Fasteners	16-15
Creating an Exploded View	16-17



Adding Parts to the Toolbox Library	16-18
Starting the Toolbox Settings Utility	16-18
Adding a part to a folder	16-19
Activating Toolbox	16-21
Locating the new part	16-22
Viewing the new part	16-22
Adding a Part Number and Description	16-23

Weldments	16-24
Structural Members	16-24



Opening an existing Document	16-24
Enabling the Weldment Toolbar	16-24
Adding Structural Members	16-25
Adding Structural Members to Contiguous Groups	16-26
Adding Structural Members to the Parallel Groups	16-27
Trimming the Structural Members	16-29
Adding the foot pads	16-36
Adding the Gussets	16-37
Adding the Fillet Beads	16-39
Viewing the Weldment Cut List	16-41
Updating the Cut List	16-42
Creating a drawing	16-43

Mold Tools Design Topics

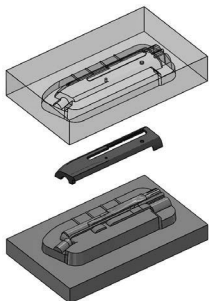
Chapter 17: Creating a Core and Cavity **17-1**

Linear Parting Lines	17-1
Tools Needed	17-2
Opening an existing Parasolid document	17-3
Creating the Parting Lines	17-4
Creating the Shut-Off Surfaces	17-5
Creating the Parting Surfaces	17-6
Sketching the profile of the mold blocks	17-7
Creating the Tooling Split	17-8
Hiding the Solid Bodies	17-9
Saving the bodies of part files	17-10
Separating the 2 blocks	17-11
Exercise: Linear Parting Lines	17-13
Questions for Review	17-19



Chapter 18: Non Planar Parting Lines **18-1**

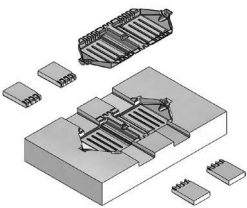
Mold-Tooling Design	18-1
Tools Needed	18-2
Opening an existing part document	18-3
Enabling the Mold Tools toolbar	18-3
Creating the Parting Lines	18-4
Creating the Shut-Off Surfaces	18-5
Creating the Parting Surfaces	18-6
Creating a Ruled Surface	18-7
Creating the patches	18-9
Patching the Filled Surface	18-10
Patching all openings	18-11



Knitting the surfaces	18-13
Creating a new plane	18-13
Creating a new sketch	18-14
Trimming the bottom of the ruled surface	18-15
Knitting the surfaces	18-16
Creating the Tooling Split sketch	18-16
Separating the solid bodies	18-18
Making the body transparent	18-19
Hiding the surface body	18-20

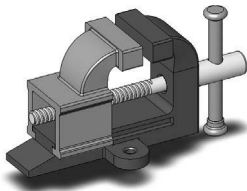
Creating Slides and Cores 18-21

Mold Tooling Design	18-21
Tools Needed	18-22
Opening a part document	18-23
Analyzing the undercuts	18-23
Analysis parameters explained	18-24
Scaling the part	18-25
Creating the parting lines	18-26
Creating the parting surfaces	18-27
Creating a new sketch	18-28
Creating the tooling split	18-29
Finalizing the upper block size	18-29
Finalizing the lower block size	18-31
Renaming the bodies and assigning materials	18-32
Creating the front slide core	18-32
Creating the back slide core	18-34
Creating an exploded view	18-35



Chapter 19: Top-Down Assembly – Part 1 19-1

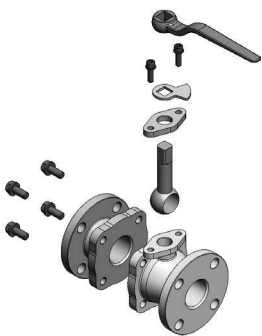
Miniature Vise	19-2
Tools Needed	19-2
Starting a new assembly template	19-3
Creating the Base part	19-3
Extruding the base	19-4
Adding the side flanges	19-5
Extruding the flanges	19-5
Adding the side cuts	19-6
Extruding the side cuts	19-6
Creating an offset distance plane	19-7
Creating the Fixed Jaw	19-7
Creating the 2 nd profile	19-8
Creating the 3D Guide Curves	19-9



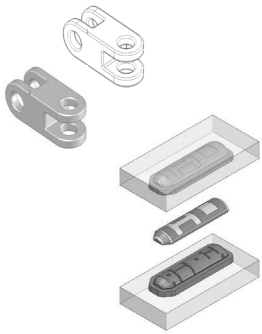
Creating the Fixed Jaw Loft	19-10
Creating the Fixed Jaw Clamp	19-11
Extruding the Fixed Jaw Clamp	19-12
Creating the Lead Screw Hole	19-12
Extruding the Hole	19-13
Adding Fillets	19-13
Creating a new component: The slide jaw	19-14
Using the offset entities command	19-15
Extruding the Slide Jaw	19-16
Adding the support wall	19-17
Extruding the support wall	19-18
Creating a new work plane	19-19
Creating the Slide Jaw	19-19
Creating the guide curve to connect two sketches	19-20
Creating the Slide Jaw Loft	19-21
Creating the clamp block	19-22
Extruding the clamp block	19-23
Adding fillets	19-25
Creating the internal threads	19-26
Sweeping the thread Profile along the Helix	19-29
Creating a Section View	19-29
Assembly Exploded view	19-30
Questions for Review	19-32

Chapter 20: Top-Down Assembly – Part 2 **20-1**

Water Control Valve	20-1
Tools Needed	20-2
Starting with a New Assembly Template	20-3
Creating the 1st Component	20-4
Adding the Inlet Flange	20-5
Adding the Mounting Holes	20-6
Adding Chamfers and Fillets	20-8
Saving as Virtual Component	20-10
Creating the 2nd Component	20-10
Creating the transition body	20-12
Adding another mounting Flange	20-13
Adding an offset-distance plane	20-14
Exiting the Edit Component Mode	20-20
Applying dimension changes	20-20
Viewing the External Reference Symbols	20-22
Inserting other components	20-23
Questions for Review	20-25



Chapter 21: External References & Repair Errors **21-1**



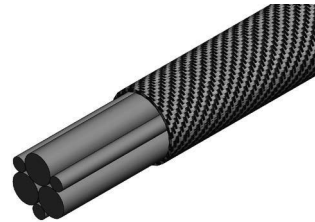
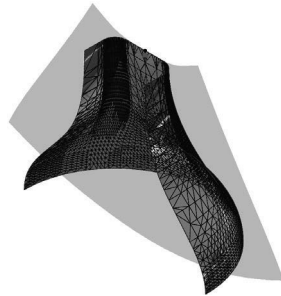
External Reference Symbols	21-2
Understanding & Removing External References	21-3
Understanding the External Symbols	21-4
Repairing the Sketches	21-5
Questions for Review	21-8
Understanding and Repairing Part Errors	21-9
Repair Errors & External References	21-16

Level 4: Final Exam **21-24**

Chapter 22: Using Appearances & Textures **22-1**



Modeling diamond knurls	22-1
Applying the knurl appearance	22-5
Applying the wire mesh appearance	22-8
Flatten surfaces	22-11
Exercise: Flattening a shoe sole	22-15



CSWP Core Preparation Practice

Preparation Materials for the CSWP-Core Examination	23-1
Challenge I: Part Modeling & Modifications	23-2
Challenge II-A: Part Configurations & Design Tables	23-22
Challenge II-B: Part Modifications	23-28
Challenge III: Bottom Up assembly	23-37

Glossary

Index

SOLIDWORKS Quick Guide

Quick Reference Guide to SOLIDWORKS 2018 Command Icons and Toolbars.