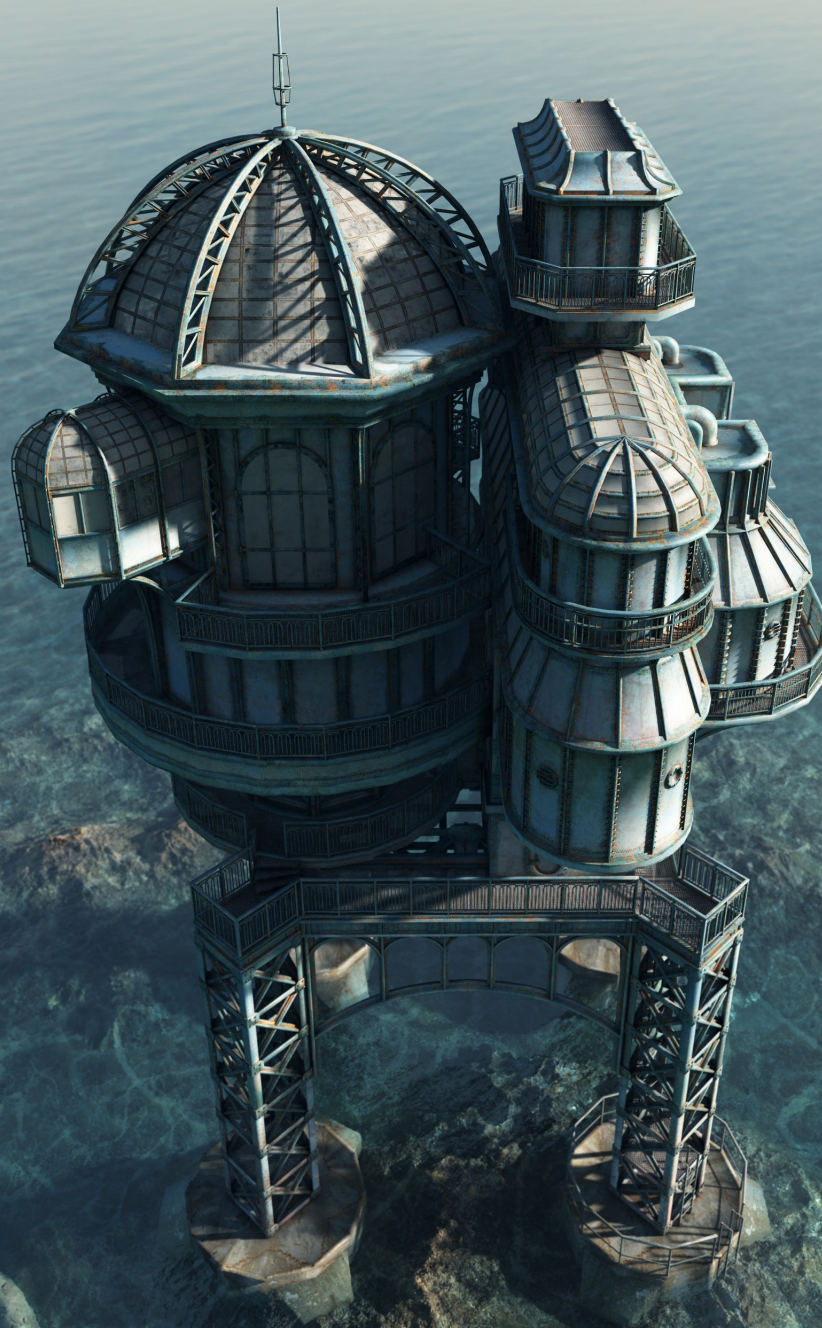


Kelly L. Murdock

Autodesk® Maya® 2019

BASICS GUIDE



Better Textbooks. Lower Prices.
www.SDCpublications.com



ACCESS CODE
UNIQUE CODE INSIDE

Visit the following websites to learn more about this book:



[amazon.com](https://www.amazon.com)

[Google books](https://books.google.com)

[BARNES & NOBLE](https://www.barnesandnoble.com)

Contents

| | |
|--|----------|
| Contents | i |
| CHAPTER 1 | 1 |
| Learning the Maya Interface | 1 |
| Lesson 1.1: Work with Menus | 2 |
| Changing Menu Sets | 2 |
| Viewing Keyboard Hotkeys | 2 |
| Accessing Option Dialog Boxes | 3 |
| Using Tear-Off Menus | 4 |
| Understanding Tools versus Actions | 4 |
| Lesson 1.1-Tutorial 1: Use a Menu Command to Create a Polygon Sphere | 5 |
| Lesson 1.2: Use the Status Line Buttons | 6 |
| Using Pop-up Help | 7 |
| Watching for Cursor Clues | 8 |
| Expanding and Collapsing Icon Button Groups | 8 |
| Opening and Saving a Scene | 8 |
| Opening Editors | 9 |
| Showing and Hiding Interface Elements | 10 |
| Lesson 1.2-Tutorial 1: Open a File | 10 |
| Lesson 1.2-Tutorial 2: Save a File | 11 |
| Lesson 1.2-Tutorial 3: Maximize the Workspace Interface | 11 |
| Lesson 1.3: Access the Shelf | 12 |
| Using the Shelf Menu | 13 |
| Creating and Deleting Shelves | 13 |
| Adding Icons and Menu Commands to a Shelf | 13 |
| Adding Layouts and Scripts to a Shelf | 13 |
| Using the Shelf Editor | 14 |
| Lesson 1.3-Tutorial 1: Create a New Shelf | 15 |
| Lesson 1.3-Tutorial 2: Populate a New Shelf | 15 |
| Lesson 1.4: Explore the Channel Box and Layer Editor | 16 |
| Selecting Attributes | 17 |
| Changing Attributes with the Mouse | 17 |
| Locking Attributes | 18 |
| Adding and Deleting Layers | 18 |
| Adding Objects to a Layer | 19 |
| Hiding All Layer Objects | 19 |
| Freezing All Layer Objects | 19 |
| Lesson 1.4-Tutorial 1: Change Channel Box Attributes | 20 |
| Lesson 1.4-Tutorial 2: Create and Rename a New Layer | 21 |
| Lesson 1.4-Tutorial 3: Add Objects to a New Layer | 21 |
| Lesson 1.5: Identify the Animation Controls, the Command Line, and the Help Line | 21 |
| Selecting an Animation Frame | 22 |
| Setting an Animation Range | 22 |

| | |
|---|----|
| Playing an Animation..... | 22 |
| Accessing the Animation Preferences | 23 |
| Using the Command Line..... | 23 |
| Viewing the Help Line..... | 24 |
| Lesson 1.5-Tutorial 1: Play an Animation..... | 24 |
| Lesson 1.5-Tutorial 2: Enter a Command..... | 25 |
| Lesson 1.6: Use the Toolbox and Quick Layout Buttons..... | 25 |
| Selecting Objects | 26 |
| Using the Transform Tools | 26 |
| Understanding Manipulators | 27 |
| Switching Layouts | 28 |
| Customizing Layouts..... | 28 |
| Resizing and Editing View Panels..... | 28 |
| Using the Outliner | 29 |
| Accessing Help..... | 30 |
| Lesson 1.6-Tutorial 1: Select an Object..... | 30 |
| Lesson 1.6-Tutorial 2: Transform an Object..... | 31 |
| Lesson 1.6-Tutorial 3: Change the Interface Layout..... | 32 |
| Lesson 1.7: Discover the Marking Menus..... | 33 |
| Accessing the Marking Menus..... | 33 |
| Customizing Marking Menus..... | 34 |
| Using the Hotbox..... | 35 |
| Customizing the Hotbox..... | 35 |
| Lesson 1.7-Tutorial 1: Access a Marking Menu..... | 35 |
| Lesson 1.7-Tutorial 2: Use the Hotbox..... | 35 |
| Chapter Summary..... | 36 |
| What You Have Learned..... | 36 |
| Key Terms From This Chapter..... | 37 |

CHAPTER 2 39

Controlling the View Panel 39

| | |
|---|----|
| Lesson 2.1: Change the View..... | 39 |
| Using the Tumble, Track, Dolly, and Camera Tools..... | 39 |
| Framing an Object..... | 40 |
| Moving Through Views..... | 41 |
| Tearing Off Panels..... | 41 |
| Using Heads-Up Displays..... | 42 |
| Accessing Grids..... | 43 |
| Opening Other Interfaces Within a Panel..... | 43 |
| Lesson 2.1-Tutorial 1: Change the Object's View..... | 44 |
| Lesson 2.2: Change Display Options..... | 47 |
| Changing Resolution..... | 47 |
| Changing Shading..... | 48 |
| Displaying Textures..... | 49 |
| Enabling Backface Culling and Improving Wireframes..... | 49 |
| Isolating Objects..... | 50 |
| Hiding and Showing Objects..... | 50 |

| | |
|--|-----------|
| Changing Object Name and Color | 50 |
| Lesson 2.2-Tutorial 1: Change the Object's Resolution..... | 51 |
| Lesson 2.2-Tutorial 2: Change the Object's Name and Color..... | 53 |
| Chapter Summary..... | 53 |
| What You Have Learned..... | 54 |
| Key Terms From This Chapter..... | 54 |
| CHAPTER 3 | 55 |
| Working with Objects..... | 55 |
| Lesson 3.1: Select Objects and Components..... | 55 |
| Selecting Multiple Objects..... | 56 |
| Understanding the Key Object | 56 |
| Using Selection Masks | 57 |
| Selecting by Menu | 58 |
| Saving a Selection Set..... | 58 |
| Lesson 3.1-Tutorial 1: Select Multiple Objects..... | 58 |
| Lesson 3.2: Select Components..... | 59 |
| Switching to Component Mode..... | 60 |
| Selecting Components..... | 60 |
| Growing and Shrinking Selections | 61 |
| Selecting Edges..... | 61 |
| Lesson 3.2-Tutorial 1: Select Components..... | 62 |
| Lesson 3.3: Transform, Group, and Parent Objects..... | 63 |
| Understanding Pivot Points..... | 63 |
| Transforming Objects Along an Axis..... | 64 |
| Transforming Objects Within a Plane..... | 64 |
| Constrained Rotations..... | 65 |
| Grouping Objects Together | 66 |
| Parenting Objects | 66 |
| Lesson 3.3-Tutorial 1: Move Pivot Point | 66 |
| Lesson 3.3-Tutorial 2: Transform Car Wheels | 67 |
| Lesson 3.3-Tutorial 3: Parent an Object..... | 68 |
| Lesson 3.4: Snap and Align Objects | 69 |
| Using Grids..... | 69 |
| Duplicating with Transform | 70 |
| Snapping Objects..... | 70 |
| Snapping to a Live Object | 71 |
| Aligning Objects..... | 71 |
| Aligning Points..... | 72 |
| Snapping Surfaces Together | 72 |
| Lesson 3.4-Tutorial 1: Snap Objects to Grid Points | 73 |
| Lesson 3.4-Tutorial 2: Snap to a Curve..... | 74 |
| Lesson 3.4-Tutorial 3: Snap to a Live Object | 75 |
| Lesson 3.4-Tutorial 4: Align Letters..... | 76 |
| Lesson 3.5: Understand Nodes and Attributes..... | 77 |
| Understanding the Various Node Types..... | 77 |
| Working with Nodes..... | 77 |

| | |
|---|-----------|
| Viewing Nodes as a Scene Hierarchy in the Outliner | 79 |
| Viewing Dependency with Node Editor..... | 80 |
| Editing Attributes..... | 82 |
| Using Undo, Redo, and Repeat..... | 82 |
| Deleting construction history | 82 |
| Lesson 3.5-Tutorial 1: Explore Dependent Nodes..... | 82 |
| Lesson 3.5-Tutorial 2: Delete Construction History | 84 |
| Chapter Summary..... | 84 |
| What You Have Learned | 84 |
| Key Terms From This Chapter..... | 85 |
| | |
| CHAPTER 4 | 87 |
| | |
| Drawing and Editing Curves | 87 |
| Lesson 4.1: Create Curves..... | 88 |
| Creating Circles and Squares | 88 |
| Creating Arcs | 88 |
| Creating Smooth Curves..... | 89 |
| Creating Straight Line Curves | 90 |
| Drawing Freehand Curves | 91 |
| Simplifying and Smoothing Curves..... | 91 |
| Lesson 4.1-Tutorial 1: Create an Eye Using Arcs and Primitive Shapes..... | 92 |
| Lesson 4.1-Tutorial 2: Draw and Compare CV, EP, and Freehand Curves..... | 93 |
| Lesson 4.1-Tutorial 3: Simplify Freehand Curves | 94 |
| Lesson 4.2: Edit Curve Details..... | 96 |
| Using the Edit Curve Tool | 96 |
| Altering Tangents | 97 |
| Adding Sharp Points to a Curve..... | 97 |
| Adding Points to the End of a Curve..... | 98 |
| Closing and Opening Curves..... | 98 |
| Lesson 4.2-Tutorial 1: Create and Edit a Star Shape | 99 |
| Lesson 4.2-Tutorial 2: Use the Edit Curve Tool | 100 |
| Lesson 4.2-Tutorial 3: Create Sharp Points | 101 |
| Lesson 4.2-Tutorial 4: Close a Curve | 102 |
| Lesson 4.3: Modify Curves..... | 103 |
| Locking Length..... | 103 |
| Straightening Curves | 103 |
| Smoothing Curves..... | 103 |
| Curling and Bending Curves..... | 104 |
| Scaling Curvature..... | 105 |
| Lesson 4.3-Tutorial 1: Curl a Curve..... | 105 |
| Lesson 4.4: Apply Curve Operators..... | 107 |
| Attaching Curves..... | 108 |
| Aligning Curves | 109 |
| Detaching and Cutting Curves | 110 |
| Finding Curve Intersections..... | 110 |
| Offsetting Curves | 110 |
| Filleting Curves | 110 |

| | |
|--|------------|
| Lesson 4.4-Tutorial 1: Connect Cursive Letters | 111 |
| Lesson 4.4-Tutorial 2: Align Flower Petals | 112 |
| Lesson 4.4-Tutorial 3: Offset Curves | 113 |
| Lesson 4.4-Tutorial 4: Fillet Curves | 114 |
| Lesson 4.5: Create Simple Surfaces from Curves..... | 115 |
| Revolving a Curve | 116 |
| Lofting a Set of Curves..... | 116 |
| Creating Planar Curves | 116 |
| Creating a Surface from Boundary Curves | 117 |
| Extruding Curves..... | 117 |
| Using the Birail Tools | 117 |
| Lesson 4.5-Tutorial 1: Revolve a Baseball Bat | 118 |
| Lesson 4.5-Tutorial 2: Loft a Banana | 118 |
| Lesson 4.5-Tutorial 3: Create a Planar Surface | 119 |
| Lesson 4.5-Tutorial 4: Extrude a Circle | 120 |
| Lesson 4.5-Tutorial 5: Create a Birail Surface..... | 121 |
| Lesson 4.6: Create 3D Type | 122 |
| Generating Text Curves | 123 |
| Changing Extrusion Depth | 123 |
| Creating Beveled Type..... | 124 |
| Lesson 4.6-Tutorial 1: Create and Bevel Text..... | 125 |
| Lesson 4.6-Tutorial 2: Create a Sign | 125 |
| Chapter Summary..... | 127 |
| What You Have Learned | 127 |
| Key Terms From This Chapter..... | 127 |
| CHAPTER 5 | 129 |
| Working with NURBS Surfaces | 129 |
| Lesson 5.1: Learn the NURBS Primitives..... | 130 |
| Creating Spheres and Cubes..... | 131 |
| Creating Cylinders and Cones | 131 |
| Creating a Plane and a Torus | 131 |
| Inserting Isoparms | 131 |
| Lesson 5.1-Tutorial 1: Create a Candle from Primitives | 132 |
| Lesson 5.1-Tutorial 2: Add Isoparms | 133 |
| Lesson 5.2: Edit NURBS Surfaces | 134 |
| Selecting Components..... | 134 |
| Using the Surface Editing Tool..... | 135 |
| Using the Sculpt Geometry Tool..... | 136 |
| Simplifying Surfaces..... | 137 |
| Breaking and Smoothing Tangents..... | 137 |
| Lesson 5.2-Tutorial 1: Edit NURBS Components | 137 |
| Lesson 5.2-Tutorial 2: Use the Surface Editing Tool | 138 |
| Lesson 5.2-Tutorial 3: Use the Sculpt Geometry Tool | 139 |
| Lesson 5.2-Tutorial 4: Create a Hard Edge | 140 |
| Lesson 5.3: Apply Surface Operators..... | 141 |
| Attaching and Detaching Surfaces..... | 141 |

| | |
|---|-----|
| Aligning Surfaces | 142 |
| Closing and Opening NURBS Surfaces | 143 |
| Extending Surfaces | 144 |
| Offsetting a Surface | 144 |
| Filleting Surfaces..... | 144 |
| Blending Surfaces | 145 |
| Lesson 5.3-Tutorial 1: Attach Surfaces | 146 |
| Lesson 5.3-Tutorial 2: Detach Surfaces | 147 |
| Lesson 5.3-Tutorial 3: Open and Close a Surface | 148 |
| Lesson 5.3-Tutorial 4: Offset Surface | 149 |
| Lesson 5.3-Tutorial 5: Add a Circular Fillet..... | 150 |
| Lesson 5.3-Tutorial 6: Blend Two Surfaces..... | 151 |
| Lesson 5.4: Trim NURBS Surfaces | 152 |
| Drawing Curves on a NURBS Surface..... | 152 |
| Projecting Curves onto a NURBS Surface | 153 |
| Marking Intersecting Surfaces | 153 |
| Trimming a Surface..... | 154 |
| Lesson 5.4-Tutorial 1: Draw and Trim a Surface | 155 |
| Lesson 5.4-Tutorial 2: Project and Trim a Curve | 156 |
| Lesson 5.5: Use Boolean Tools | 157 |
| Combining Surfaces with the Union Tool | 158 |
| Removing Surface Parts with the Difference Tool..... | 158 |
| Creating a Surface Intersection with the Intersect Tool..... | 158 |
| Lesson 5.5-Tutorial 1: Create Boolean Union Surfaces | 158 |
| Lesson 5.5-Tutorial 2: Create Boolean Difference Surfaces | 159 |
| Lesson 5.5-Tutorial 3: Create Boolean Intersect Surfaces..... | 160 |
| Lesson 5.6: Stitch Surfaces Together | 161 |
| Applying Global Stitch | 162 |
| Stitching Surface Points Together | 162 |
| Stitching Surface Edges Together | 162 |
| Lesson 5.6-Tutorial 1: Apply Global Stitch..... | 162 |
| Lesson 5.7: Convert Objects | 163 |
| Converting NURBS to Polygons | 163 |
| Converting to Subdivision Surfaces | 164 |
| Converting Subdivision Surfaces to NURBS and Polygons..... | 164 |
| Lesson 5.7-Tutorial 1: Convert NURBS to Polygons | 165 |
| Lesson 5.7-Tutorial 2: Convert NURBS to Polygons and Back | 166 |
| Chapter Summary..... | 167 |
| What You Have Learned | 167 |
| Key Terms From This Chapter..... | 168 |

CHAPTER 6 169

Creating and Editing Polygon Objects..... 169

| | |
|--|-----|
| Lesson 6.1: Use Polygon Primitives | 170 |
| Creating Polygon Primitives..... | 170 |
| Creating Gears | 171 |
| Creating Abstract Objects..... | 172 |

| | |
|--|-----|
| Lesson 6.1-Tutorial 1: Create Polygon Primitives..... | 173 |
| Lesson 6.2: Learn Normals and Manually Create Polygons | 174 |
| Understanding Normals | 174 |
| Determining Normal Direction | 174 |
| Showing Normals..... | 174 |
| Reversing and Controlling Normals | 175 |
| Softening and Hardening Edges | 175 |
| Using the Vertex Normal Edit Tool | 176 |
| Creating Polygon Objects by Hand | 176 |
| Appending to a Polygon | 176 |
| Combining Polygons | 177 |
| Mirroring Polygon Objects..... | 177 |
| Cleaning Up and Reducing Polygons | 178 |
| Lesson 6.2-Tutorial 1: Conform Normals | 179 |
| Lesson 6.2-Tutorial 2: Create a Polygon..... | 179 |
| Lesson 6.2-Tutorial 3: Append to a Polygon..... | 180 |
| Lesson 6.2-Tutorial 4: Mirror an Object | 181 |
| Lesson 6.3: Edit Polygons..... | 182 |
| Selecting Polygon Components | 182 |
| Subdividing and Splitting Polygon Faces | 184 |
| Cutting Faces | 185 |
| Merging Vertices | 186 |
| Merging and Collapsing Edges..... | 187 |
| Bridging Edges | 188 |
| Deleting Components..... | 189 |
| Lesson 6.3-Tutorial 1: Create a Mushroom..... | 189 |
| Lesson 6.3-Tutorial 2: Bridge Edges | 190 |
| Lesson 6.3-Tutorial 3: Merge Vertices and Edges | 191 |
| Lesson 6.4: Use Polygon Operations | 192 |
| Duplicating Faces..... | 192 |
| Extruding Components..... | 193 |
| Chamfer a Vertex..... | 195 |
| Beveling an Edge | 196 |
| Poking a Face..... | 197 |
| Creating a Wedge | 198 |
| Using Symmetry..... | 199 |
| Lesson 6.4-Tutorial 1: Offset Faces | 199 |
| Lesson 6.4-Tutorial 2: Extrude Cube Vertices | 200 |
| Lesson 6.4-Tutorial 3: Extrude Cube Edges and Faces | 201 |
| Lesson 6.4-Tutorial 4: Chamfer Vertices | 202 |
| Lesson 6.4-Tutorial 5: Bevel Edges | 203 |
| Lesson 6.4-Tutorial 6: Poke Faces | 204 |
| Lesson 6.4-Tutorial 7: Wedge Faces..... | 205 |
| Lesson 6.4-Tutorial 8: Symmetrical Editing | 206 |
| Lesson 6.5: Smooth Polygon Edges | 207 |
| Smoothing Polygons with Subdivisions | 207 |
| Creating a Smooth Proxy | 208 |
| Adding a Crease to a Smoothed Polygon | 208 |
| Smoothing Polygons with Vertex Averaging | 209 |

| | |
|---|-----|
| Lesson 6.5-Tutorial 1: Smooth Faces..... | 209 |
| Lesson 6.5-Tutorial 2: Smooth Proxy Turtle | 210 |
| Lesson 6.5-Tutorial 3: Smooth Faces with Vertex Averaging | 211 |
| Lesson 6.6: Use Polygon Booleans and Triangulate Polygons | 212 |
| Combining Polygon Objects..... | 213 |
| Finding the Difference Between Objects..... | 213 |
| Creating an Intersection Object..... | 213 |
| Triangulating Polygon Faces | 213 |
| Switching Polygon Faces to Rectangles | 214 |
| Flipping Triangle Edges | 214 |
| Lesson 6.6-Tutorial 1: Create a Button from Booleans | 214 |
| Lesson 6.6-Tutorial 2: Triangulate Non-Planar Polygons | 215 |
| Lesson 6.7: Create Holes in Polygons | 216 |
| Detaching a Vertex | 216 |
| Detaching Faces..... | 217 |
| Using the Make Hole Tool | 218 |
| Filling Holes | 219 |
| Lesson 6.7-Tutorial 1: Add Holes to a Cube | 219 |
| Lesson 6.8: Work with Edge Loops, Rings, and Borders | 220 |
| Selecting Edge Loops, Rings, and Borders | 221 |
| Converting Selections | 221 |
| Using the Insert Loop Tool..... | 221 |
| Creating Custom Edge Loops..... | 222 |
| Lesson 6.8-Tutorial 1: Add Edge Loops to a Face | 223 |
| Lesson 6.9: Learn the Modeling Toolkit..... | 224 |
| Selecting Components..... | 225 |
| Setting Constraints | 226 |
| Using Soft Selection | 226 |
| Using Polygon Tools..... | 226 |
| Using the Target Weld Tool..... | 227 |
| Making Shapes with the Connect Tool | 227 |
| Lesson 6.9-Tutorial 1: Modeling with Constraints and Soft Select..... | 228 |
| Lesson 6.9-Tutorial 2: Adding Arms to a Torso | 229 |
| Lesson 6.10: Model with the Quad Draw Tool | 230 |
| Creating Polygons with the Quad Draw Tool..... | 231 |
| Moving Components with the Quad Draw Tool..... | 232 |
| Relaxing Components with the Quad Draw Tool | 232 |
| Adding Edge Loops with the Quad Draw Tool | 232 |
| Extending Edges with the Quad Draw Tool | 233 |
| Deleting Components with the Quad Draw Tool | 234 |
| Accessing the Quad Draw Tool Options | 234 |
| Lesson 6.10-Tutorial 1: Adding Arms to a Torso | 235 |
| Chapter Summary..... | 236 |
| What You Have Learned..... | 237 |
| Key Terms From This Chapter..... | 237 |

CHAPTER 7 239

| | |
|---|------------|
| Assigning Materials and Textures | 239 |
| Lesson 7.1: Apply Materials | 240 |
| Applying New Materials | 240 |
| Renaming Materials..... | 241 |
| Applying Existing Materials | 241 |
| Applying Materials to Selected Faces | 241 |
| Changing Material Attributes | 241 |
| Moving Between Nodes | 243 |
| Rendering Materials | 243 |
| Lesson 7.1-Tutorial 1: Apply a Material | 244 |
| Lesson 7.1-Tutorial 2: Apply a Material to Face Selection | 245 |
| Lesson 7.1-Tutorial 3: Apply and Render a Texture | 246 |
| Lesson 7.2: Use the Hypershade..... | 247 |
| Using the Create Bar..... | 248 |
| Using the tabbed panes..... | 249 |
| Using the Work Area | 250 |
| Working with Nodes..... | 251 |
| Connecting Nodes | 251 |
| Using the Material Viewer..... | 252 |
| Dragging Materials to Objects..... | 253 |
| Lesson 7.2-Tutorial 1: Create a Custom Material..... | 253 |
| Lesson 7.2-Tutorial 2: Create a Custom Cloth Material | 254 |
| Lesson 7.3: Work with Materials | 255 |
| Learning the Surface Materials..... | 255 |
| Changing Material Color..... | 256 |
| Changing Material Transparency..... | 256 |
| Using Other Material Attributes..... | 257 |
| Layering Materials | 257 |
| Using the Ramp Shader | 258 |
| Using the Shading Map..... | 259 |
| Lesson 7.3-Tutorial 1: Change Color and Transparency | 260 |
| Lesson 7.3-Tutorial 2: Layer Materials | 261 |
| Lesson 7.3-Tutorial 3: Use a Shading Map | 262 |
| Lesson 7.4: Work with Textures | 263 |
| Connecting Texture Nodes | 264 |
| Applying Textures as Color | 264 |
| Mapping Textures to Attributes | 265 |
| Using Bump Maps..... | 265 |
| Loading File Textures..... | 266 |
| Layering Textures | 267 |
| Lesson 7.4-Tutorial 1: Apply Textures | 268 |
| Lesson 7.4-Tutorial 2: Load an Image Texture | 269 |
| Lesson 7.5: Position Textures | 270 |
| Using Default Mapping..... | 270 |
| Using Projection Mapping | 271 |
| Placing 2D Textures | 272 |
| Placing 3D Textures | 272 |
| Lesson 7.5-Tutorial 1: Position 2D Textures..... | 273 |
| Lesson 7.5-Tutorial 2: Position 3D Textures..... | 274 |

| | |
|--|-----|
| Lesson 7.6: Use Displacement Maps | 275 |
| Bump Maps vs. Displacement Maps | 275 |
| Adding Relief with Displacement Maps..... | 276 |
| Converting Displacement Maps to Geometry | 277 |
| Lesson 7.6-Tutorial 1: Use a Displacement map | 278 |
| Lesson 7.6-Tutorial 2: Convert a Displacement map..... | 279 |
| Lesson 7.7: Use Utilities Nodes..... | 280 |
| Using the General Utilities..... | 280 |
| Using the Color Utilities..... | 281 |
| Using the Switch Utilities..... | 281 |
| Lesson 7.7-Tutorial 1: Blend Colors | 281 |
| Lesson 7.8: Paint in 3D..... | 282 |
| Assigning a Paint Texture | 282 |
| Selecting a Brush | 283 |
| Applying Color | 284 |
| Using Different Paint Operations | 284 |
| Painting Other Attributes | 285 |
| Lesson 7.8-Tutorial 1: Use the 3D Paint Tool | 286 |
| Lesson 7.9: Edit UVs..... | 287 |
| Understanding UVs..... | 287 |
| Accessing the UV Editor..... | 287 |
| Selecting and Editing UV Components | 288 |
| Working with UVs and Shells..... | 289 |
| Using Different Mappings..... | 290 |
| Unfolding UV Shells | 291 |
| Cutting and Sewing UVs | 292 |
| Arranging UV Shells | 293 |
| Generating a UV Snapshot | 294 |
| Lesson 7.9-Tutorial 1: Edit UVs..... | 294 |
| Lesson 7.9-Tutorial 2: Work with UV Shells | 296 |
| Chapter Summary..... | 298 |
| What You Have Learned | 298 |
| Key terms From This Chapter | 299 |

CHAPTER 8 301

Adding Paint Effects 301

| | |
|---|-----|
| Lesson 8.1: Use the Preset Brushes..... | 301 |
| Accessing the Paint Effects Panel | 301 |
| Using the Paint Effects Tool..... | 302 |
| Using Preset Brushes | 302 |
| Introducing the Content Browser | 303 |
| Blending Presets..... | 304 |
| Redrawing the View | 305 |
| Clearing the View..... | 305 |
| Lesson 8.1-Tutorial 1: Use a Paint Effects Brush | 305 |
| Lesson 8.1-Tutorial 2: Use a Content Browser Brush..... | 306 |
| Lesson 8.1-Tutorial 3: Blend Brushes | 307 |

| | |
|---|------------|
| Lesson 8.2: Create Custom Brushes..... | 308 |
| Changing Template Brush Settings..... | 308 |
| Using the Various Brush Types..... | 309 |
| Changing Brush Size..... | 311 |
| Changing Brush Color..... | 312 |
| Enabling Illumination and Shadows..... | 313 |
| Enabling Glows..... | 314 |
| Creating and Saving Custom Brushes..... | 315 |
| Lesson 8.2-Tutorial 1: Change Brush Size..... | 316 |
| Lesson 8.2-Tutorial 2: Change Brush Color..... | 317 |
| Lesson 8.2-Tutorial 3: Add Shadows..... | 318 |
| Lesson 8.2-Tutorial 4: Add a Glow..... | 319 |
| Lesson 8.3: Paint in 2D..... | 320 |
| Introducing the Paint Effects Canvas..... | 320 |
| Changing the Canvas Size..... | 321 |
| Creating Seamless Textures..... | 321 |
| Saving Textures..... | 322 |
| Undoing the Last Stroke..... | 322 |
| Saving the Alpha Channel..... | 322 |
| Lesson 8.3-Tutorial 1: Create a Seamless Texture..... | 323 |
| Lesson 8.3-Tutorial 2: Save an Image and Alpha Channel..... | 324 |
| Lesson 8.4: Paint on 3D Objects..... | 326 |
| Painting in a View Panel..... | 326 |
| Painting on Objects..... | 327 |
| Auto-Painting an Object..... | 328 |
| Saving Depth as a Grayscale Map..... | 329 |
| Lesson 8.4-Tutorial 1: Paint on Objects..... | 329 |
| Lesson 8.4-Tutorial 2: Auto-Paint on Objects..... | 330 |
| Lesson 8.5: Edit Paint Effects..... | 331 |
| Selecting Strokes..... | 331 |
| Editing Strokes..... | 332 |
| Converting Strokes to Polygons..... | 332 |
| Changing the Default Light..... | 333 |
| Lesson 8.5-Tutorial 1: Select and Edit Strokes..... | 333 |
| Lesson 8.5-Tutorial 2: Convert Paint Effects to Polygons..... | 334 |
| Chapter Summary..... | 335 |
| What You Have Learned..... | 335 |
| Key Terms From This Chapter..... | 336 |
| CHAPTER 9..... | 337 |
| Using Cameras and Lights..... | 337 |
| Lesson 9.1: Work with Cameras..... | 338 |
| Creating Cameras..... | 338 |
| Changing Camera Settings..... | 338 |
| Selecting a Camera..... | 339 |
| Positioning Cameras..... | 339 |
| Looking Through a New Camera..... | 339 |

| | |
|--|------------|
| Setting View Guidelines..... | 340 |
| Changing the Depth of Field | 341 |
| Lesson 9.1-Tutorial 1: Create a Camera | 342 |
| Lesson 9.1-Tutorial 2: Aim a Camera..... | 342 |
| Lesson 9.1-Tutorial 3: Create a Depth-of-Field Effect | 343 |
| Lesson 9.2: Create a Background..... | 344 |
| Setting the Background Color..... | 344 |
| Adding an Image Plane | 345 |
| Creating a Textured Background | 345 |
| Loading a Background Image..... | 346 |
| Positioning the Background..... | 347 |
| Lesson 9.2-Tutorial 1: Change Background Color..... | 347 |
| Lesson 9.2-Tutorial 2: Change Background Texture..... | 348 |
| Lesson 9.2-Tutorial 3: Add and Position a Background Image | 349 |
| Lesson 9.3: Create and Position Lights | 350 |
| Using Default Lights..... | 350 |
| Understanding the Light Types..... | 350 |
| Creating Lights..... | 351 |
| Manipulating Lights | 351 |
| Manipulating Spot Lights..... | 352 |
| Lesson 9.3-Tutorial 1: Create and Manipulate a Light | 353 |
| Lesson 9.4: Change Light Settings..... | 355 |
| Changing Light Color..... | 355 |
| Changing Light Intensity and Decay | 355 |
| Enabling Shadows..... | 356 |
| Lesson 9.4-Tutorial 1: Change Light Color and Intensity..... | 357 |
| Lesson 9.4-Tutorial 2: Enable Shadows | 358 |
| Lesson 9.5: Create Light Effects..... | 359 |
| Creating Light Fog..... | 359 |
| Creating Glows and Halos..... | 360 |
| Creating Lens Flares..... | 361 |
| Lesson 9.5-Tutorial 1: Enable Light Fog..... | 362 |
| Lesson 9.5-Tutorial 2: Enable a Halo Light Effect | 364 |
| Chapter Summary..... | 365 |
| What You Have Learned | 365 |
| Key Terms From This Chapter..... | 366 |
| CHAPTER 10 | 367 |
| Animating with Keyframes | 367 |
| Lesson 10.1: Set Keyframes | 367 |
| Setting Keys | 368 |
| Using Auto Key | 368 |
| Selecting Keys..... | 369 |
| Copying Keys..... | 369 |
| Deleting Keys | 370 |
| Snapping Keys..... | 370 |
| Lesson 10.1-Tutorial 1: Set Keys..... | 370 |

| | |
|--|------------|
| Lesson 10.1-Tutorial 2: Use Auto Key..... | 371 |
| Lesson 10.1-Tutorial 3: Move Keys..... | 372 |
| Lesson 10.2: View an Animation..... | 373 |
| Previewing Animation | 373 |
| Setting Frame Rate | 374 |
| Looping an Animation | 374 |
| Accessing Animation Preferences | 374 |
| Enabling Ghosting..... | 375 |
| Creating Motion Trails..... | 377 |
| Enabling Cached Playback | 377 |
| Using Playblast..... | 377 |
| Lesson 10.2-Tutorial 1: Preview an Animation..... | 378 |
| Lesson 10.2-Tutorial 2: Use Playblast..... | 379 |
| Lesson 10.3: Animate Using Motion Paths..... | 380 |
| Creating Motion Path Keys..... | 380 |
| Drawing a Motion Path..... | 381 |
| Attaching an Object to a Motion Path..... | 381 |
| Adjusting an Attached Motion Path | 382 |
| Deforming an Object as it Follows a Motion Path..... | 383 |
| Lesson 10.3-Tutorial 1: Create a Motion Path | 384 |
| Lesson 10.3-Tutorial 2: Draw a Motion Path and Attach an Object..... | 385 |
| Lesson 10.4: Edit Animation Curves | 386 |
| Using the Graph Editor | 386 |
| Framing Curves..... | 387 |
| Editing Keys | 387 |
| Reducing Keys..... | 388 |
| Setting Infinity Conditions | 389 |
| Working with Tangents | 390 |
| Adding Keys | 391 |
| Lesson 10.4-Tutorial 1: Edit Animation Curves | 391 |
| Lesson 10.4-Tutorial 2: Repeat Motion..... | 392 |
| Lesson 10.5: Control Animation Timing..... | 393 |
| Using the Dope Sheet | 393 |
| Using the Dope Sheet Manipulator | 394 |
| Adding Sound | 395 |
| Lesson 10.5-Tutorial 1: Use the Dope Sheet | 395 |
| Lesson 10.5-Tutorial 2: Add Sound..... | 397 |
| Chapter Summary..... | 397 |
| What You Have Learned..... | 397 |
| Key Terms From This Chapter..... | 398 |
| CHAPTER 11 | 399 |
| Working with Characters | 399 |
| Lesson 11.1: Build a Skeleton | 399 |
| Creating Joints | 400 |
| Inserting a Joint | 400 |
| Connecting a Joint Chain | 401 |

| | |
|---|-----|
| Removing and Disconnecting Joints | 402 |
| Mirroring Joints | 402 |
| Resetting the Root Joint | 403 |
| Naming Joints | 403 |
| Lesson 11.1-Tutorial 1: Create a Skeleton..... | 403 |
| Lesson 11.1-Tutorial 2: Add a Tail to the Skeleton..... | 404 |
| Lesson 11.2: Edit Joint Attributes | 405 |
| Inheriting Transforms | 405 |
| Orienting Joints..... | 405 |
| Labeling Joints | 406 |
| Showing and Hiding Labels..... | 406 |
| Limiting Joints..... | 406 |
| Displaying Joints | 407 |
| Lesson 11.2-Tutorial 1: Label Joints | 408 |
| Lesson 11.2-Tutorial 2: Limit Joint Motion..... | 409 |
| Lesson 11.3: Add Inverse Kinematics..... | 410 |
| Using the Create IK Handle Command | 410 |
| Using the Create IK Spline Handle Command | 411 |
| Posing the IK Handles | 412 |
| Switching Between FK and IK | 413 |
| Lesson 11.3-Tutorial 1: Add IK to a Skeleton..... | 413 |
| Lesson 11.3-Tutorial 2: Add IK Spline to the Skeleton Tail..... | 414 |
| Lesson 11.4: Skin a Character | 415 |
| Creating Effective Skin..... | 415 |
| Positioning a Skeleton | 416 |
| Using X-Ray Mode | 416 |
| Binding Skin | 416 |
| Binding Interactive Skin | 417 |
| Returning to Default Pose | 418 |
| Unbinding Skin..... | 418 |
| Animating Joints | 418 |
| Lesson 11.4-Tutorial 1: Position a Skin..... | 418 |
| Lesson 11.4-Tutorial 2: Bind Skin | 419 |
| Lesson 11.4-Tutorial 3: Animate Joints | 420 |
| Lesson 11.5: Edit a Skin..... | 421 |
| Adding Influence Objects | 421 |
| Understanding Skin Weights | 422 |
| Using the Interactive Bind Skin Tool..... | 423 |
| Painting and Smoothing Skin Weights..... | 424 |
| Mirroring Skin Weights..... | 425 |
| Resetting Skin Weights..... | 425 |
| Lesson 11.5-Tutorial 1: Add Influence Object | 425 |
| Lesson 11.5-Tutorial 2: Paint Weights..... | 426 |
| Lesson 11.6: Automatic Rigging..... | 427 |
| Creating a Rig with One-Click | 427 |
| Creating a Step-by-Step Rig..... | 428 |
| Controlling the Human IK Rig | 429 |
| Lesson 11.6-Tutorial 1: Creating a Quick Rig..... | 430 |
| Lesson 11.7: Add Hair and Fur | 431 |

| | |
|--|------------|
| Adding preset hair to an object..... | 431 |
| Creating hair | 432 |
| Style hair | 433 |
| Making hair dynamic | 433 |
| Creating and editing a hair attributes | 434 |
| Rendering hair and fur..... | 435 |
| Lesson 11.7-Tutorial 1: Add hair | 436 |
| Chapter Summary..... | 437 |
| What You Have Learned | 437 |
| Key Terms From This Chapter..... | 438 |
| CHAPTER 12 | 439 |
| Animating with Dynamics | 439 |
| Lesson 12.1: Use Particles | 439 |
| Viewing Particle Examples..... | 440 |
| Creating Particles..... | 440 |
| Creating Surface Particles..... | 441 |
| Viewing Particle Attributes and Count | 442 |
| Setting Particle Lifespan | 443 |
| Changing Particle Render Type..... | 443 |
| Using Instances..... | 444 |
| Cycling Instances | 445 |
| Lesson 12.1-Tutorial 1: Add Clouds to a Sphere..... | 446 |
| Lesson 12.1-Tutorial 2: Use an Instance..... | 447 |
| Lesson 12.1-Tutorial 3: Cycle Instances..... | 448 |
| Lesson 12.2: Create an Emitter..... | 449 |
| Using an Emitter | 449 |
| Using a Directional Emitter..... | 450 |
| Using a Volume Emitter..... | 451 |
| Using an Object as an Emitter | 452 |
| Changing Emitter Attributes..... | 453 |
| Lesson 12.2-Tutorial 1: Create an Omni Emitter | 454 |
| Lesson 12.2-Tutorial 2: Create a Directional Emitter | 455 |
| Lesson 12.2-Tutorial 3: Create an Object Emitter | 456 |
| Lesson 12.3: Create Fields and Goals | 457 |
| Understanding Fields..... | 457 |
| Connecting Objects to a Field..... | 458 |
| Changing Field Attributes | 458 |
| Regulating Field Forces..... | 459 |
| Establishing Goals..... | 459 |
| Lesson 12.3-Tutorial 1: Create a Vortex Field | 460 |
| Lesson 12.3-Tutorial 2: Create a Goal | 461 |
| Lesson 12.4: Manage Particle Collisions | 462 |
| Enabling Particle Collisions | 462 |
| Enabling Particle Collisions | 463 |
| Setting Particle Attributes | 463 |
| Defining New Events | 464 |

| | |
|--|-----|
| Assigning a Solver | 465 |
| Creating Soft Body Objects..... | 465 |
| Lesson 12.4-Tutorial 1: Enable Particle Collisions | 465 |
| Lesson 12.4-Tutorial 2: Add a Collision Event | 466 |
| Lesson 12.4-Tutorial 3: Filling a Container with Particles | 467 |
| Lesson 12.4-Tutorial 4: Create Soft Body Objects..... | 468 |
| Lesson 12.5: Use Cloth..... | 469 |
| Viewing Cloth Examples | 469 |
| Creating Cloth..... | 470 |
| Creating a Cloth Collision Object | 471 |
| Setting Cloth Object Properties..... | 472 |
| Lesson 12.5-Tutorial 1: Drape a Tablecloth..... | 473 |
| Lesson 12.6: Constrain Motion..... | 474 |
| Adding Constraints | 474 |
| Creating Component Constraints | 475 |
| Locking Components in Space | 476 |
| Creating Springs..... | 476 |
| Lesson 12.6-Tutorial 1: Constrain a Flag to a Pole | 476 |
| Lesson 12.7: Use Fluids..... | 477 |
| Creating a Fluid Container | 477 |
| Creating a Fluid Emitter..... | 478 |
| Changing Fluid Properties..... | 478 |
| Creating Oceans and Ponds..... | 478 |
| Lesson 12.7-Tutorial 1: Fill a Container | 479 |
| Lesson 12.7-Tutorial 2: Create a Pond with Ripples..... | 480 |
| Lesson 12.8: Create Effects..... | 481 |
| Creating Fire and Smoke..... | 481 |
| Creating Fireworks..... | 483 |
| Creating Lightning..... | 483 |
| Shattering Objects | 484 |
| Flowing Along a Curve | 485 |
| Lesson 12.8-Tutorial 1: Create a Fire Effect | 486 |
| Lesson 12.8-Tutorial 2: Create Fireworks..... | 487 |
| Lesson 12.8-Tutorial 3: Create Lightning..... | 488 |
| Lesson 12.8-Tutorial 4: Create Curve Flow..... | 489 |
| Chapter Summary..... | 490 |
| What You Have Learned | 490 |
| Key Terms From This Chapter..... | 491 |

CHAPTER 13 493

Rendering a Scene 493

| | |
|---|-----|
| Lesson 13.1: Configure the Render Process | 493 |
| Choosing a Renderer | 494 |
| Saving Render Presets | 495 |
| Changing a File Name | 495 |
| Changing File Format..... | 495 |
| Changing Camera View and Resolution..... | 495 |

| | |
|--|------------|
| Using render layers..... | 495 |
| Lesson 13.1-Tutorial 1: Set Render Settings..... | 496 |
| Lesson 13.1-Tutorial 2: Change the Rendering Path | 496 |
| Lesson 13.2: Use Special Rendering Features..... | 496 |
| Adjusting Render Quality..... | 497 |
| Enabling Raytracing..... | 499 |
| Enabling Motion Blur..... | 499 |
| Lesson 13.2-Tutorial 1: Change the Render Quality..... | 500 |
| Lesson 13.2-Tutorial 2: Enable Raytracing | 500 |
| Lesson 13.2-Tutorial 3: Enable Motion Blur | 501 |
| Lesson 13.2-Tutorial 4: Add Environment Fog | 502 |
| Lesson 13.3: Use the Render View Window | 503 |
| Opening the Render View | 503 |
| Rendering a Region..... | 504 |
| Using Interactive Photorealistic Rendering (IPR)..... | 505 |
| Saving Rendered Images | 505 |
| Lesson 13.3-Tutorial 1: Render a Region..... | 505 |
| Lesson 13.3-Tutorial 2: Use IPR Rendering | 506 |
| Lesson 13.4: Create a Final Render..... | 507 |
| Rendering a Single Frame | 507 |
| Rendering an Animation Sequence | 507 |
| Using Batch Rendering | 508 |
| Lesson 13.4-Tutorial 1: Render an Animation..... | 508 |
| Lesson 13.5: Render with Maya Vector and Arnold | 509 |
| Using Maya Vector | 509 |
| Using Arnold | 511 |
| Using Arnold Materials..... | 513 |
| Using Arnold Lights..... | 514 |
| Lesson 13.5-Tutorial 1: Render Using Vectors | 514 |
| Lesson 13.5-Tutorial 2: Render with Arnold..... | 515 |
| Chapter Summary..... | 516 |
| What You Have Learned..... | 516 |
| Key Terms From This Chapter..... | 517 |
| CHAPTER 14 | 519 |
| Using MEL Scripting..... | 519 |
| Lesson 14.1: Use the Command Line..... | 519 |
| Using MEL in the Command Line..... | 519 |
| Repeating Command Line Commands | 520 |
| Using the MEL Scripting Commands..... | 520 |
| Lesson 14.1-Tutorial 1: Enter MEL Commands in the Command Line | 521 |
| Lesson 14.2: Use the Script Editor | 522 |
| Executing Script Commands | 523 |
| Viewing Interface Commands | 523 |
| Reusing Interface Commands..... | 523 |
| Saving Scripts..... | 524 |
| Adding Scripts to the Shelf | 524 |

| | |
|---|-----|
| Lesson 14.2-Tutorial 1: Use the Script Editor | 524 |
| Lesson 14.2-Tutorial 2: View Interface Commands and Save a Script | 525 |
| Lesson 14.2-Tutorial 3: Execute a Custom Script | 526 |
| Chapter Summary | 527 |
| What You Have Learned | 527 |
| Key Terms From This Chapter | 528 |