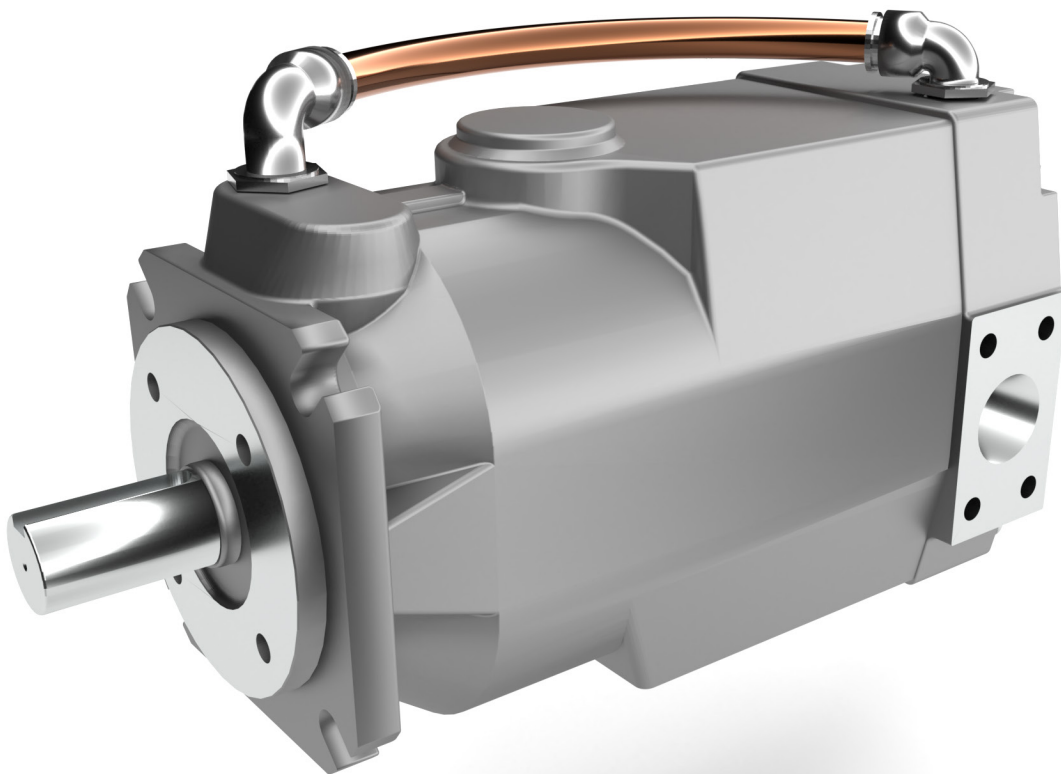


# Certified SOLIDWORKS® Expert Preparation Materials

SOLIDWORKS® 2019



Paul Tran CSWE, CSWI

Visit the following websites to learn more about this book:



[amazon.com](https://www.amazon.com)

[Google books](https://books.google.com)

[BARNES & NOBLE](https://www.barnesandnoble.com)

# Table of Contents

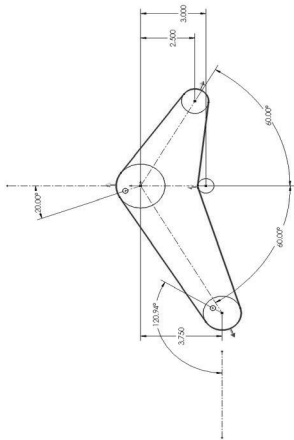
---



---

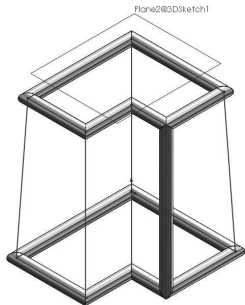
## Introduction: Are You the Next CSWE?

### Chapter 1: Using Belt Chain 1-1



Chapter summary	1-1
Tools Needed	1-2
Starting a new part template	1-3
Creating the main sketch	1-3
Making the blocks	1-4
Creating a belt chain	1-5
Adding the angular dimensions	1-7
Applying dimension changes	1-8
Checking the belt length	1-9
Changing the pulley's angle	1-9
Verifying the new belt length	1-10
Exercise: Creating a belt chain	1-11

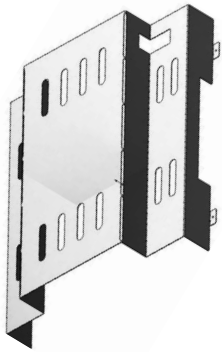
### Chapter 2: Advanced Weldments 2-1



Chapter summary	2-1
Tools Needed	2-2
Starting a new part template	2-3
Creating a 3D sketch	2-5
Creating the 2 <sup>nd</sup> portion of the 3D sketch	2-7
Connecting the sketch entities	2-9
Adding the structural members	2-10
Assigning the material	2-11
Calculating the mass	2-11
Adding more groups	2-12
Calculating the mass	2-13
Modifying the dimensions	2-14
Calculating the mass	2-15

### Chapter 3: Advanced Sheet Metal 3-1

Chapter summary	3-1
Tools Needed	3-2
Opening an IGES document	3-3
Changing the display style	3-4



Enabling the sheet metal tool tab	3-5
Converting to sheet metal	3-5
Measuring the flat length	3-6
Unfolding the bends	3-7
Extruding a cut	3-8
Folding the bends	3-8
Assigning material	3-9
Calculating the mass	3-9

**Chapter 4: Cam Motions 4-1**

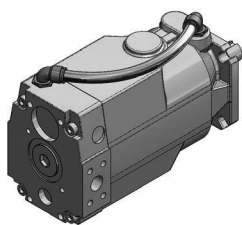
Chapter summary	4-1
Tools Needed	4-2
Opening an assembly document	4-3
Adding a tangent mate	4-5
Measuring the minimum distance	4-6
Measuring the maximum distance	4-7

**Chapter 5: Assembly Drawings & BOMs 5-1**



Chapter summary	5-1
Tools Needed	5-2
Opening an assembly document	5-3
Transferring to a drawing	5-4
Adding an isometric drawing view	5-5
Adding a Bill of Materials	5-6
Changing the column property	5-7
Locating the quantity	5-7
Creating another custom property	5-7
Locating the finish	5-8
Changing the BOM type	5-9
Locating the sub-components	5-9

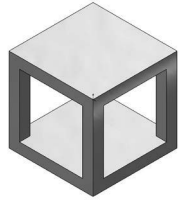
**Chapter 6: Assembly Modifications 6-1**



Chapter summary	6-1
Tools Needed	6-2
Opening an assembly document	6-3
Creating a new plane	6-3
Creating a new component	6-4
Creating a fit spline	6-6
Creating a new plane	6-7
Sketching the sweep profile	6-7
Creating the sweep	6-8
Assigning material	6-9

Calculating the mass 6-9

**Chapter 7: Using Combine Common 7-1**



Chapter summary 7-1

Tools Needed 7-2

Using Combine Common – Part 1 7-3

Starting a new part document 7-3

Creating the 1st solid body 7-3

Creating the 2nd solid body 7-5

Creating a combine common body 7-6

Finding the volume of the new body 7-7



Using Combine Common – Part 2 7-8

Starting a new part document 7-8

Creating the two solid bodies 7-8

Using the combine common option 7-11

Finding the volume of the new body 7-12

Using Combine Common – Part 3 7-13

Adding an Angle & Depth chamfer 7-14

Changing to a Distance & Distance chamfer 7-14

Creating an Offset Face chamfer 7-15

Changing to a Face-Face chamfer 7-15

Creating a Split Line 7-16

Creating a Parting Line Draft 7-17

Assigning material 7-18

Calculating the mass 7-18

**Chapter 8: Part Modifications 8-1**

Chapter summary 8-1

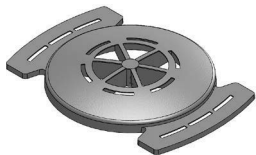
Tools Needed 8-2

Part Modifications – Challenge 1 of 5 8-3

Modifying the pattern angle 8-4

Changing the pattern angle 8-5

Calculating the final mass 8-5



Part modifications – Challenge 2 of 5 8-6

Filling the hollow cavity 8-7

Deleting the fillets 8-8

Modifying the base 8-11

Removing the outer portion 8-12

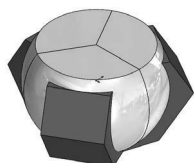
Adding fillets 8-14

Shelling the part 8-15

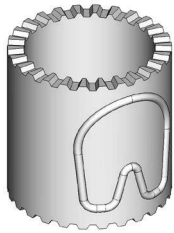
Creating a section view 8-15

Assigning material 8-16

Calculating the final mass 8-17



	Part Modifications – Challenge 3 of 5	8-18
	Creating a cut feature	8-19
	Making a Circular Pattern of the body	8-20
	Assigning material	8-21
	Calculating the final mass	8-21
	Part Modifications – Challenge 4 of 5	8-22
	Converting the outline of the pattern	8-22
	Removing the raised pattern	8-24
	Extruding a cut	8-24
	Creating a sweep path	8-25
	Creating a swept feature	8-26
	Calculating the mass	8-27
	Part Modifications – Challenge 5 of 5	8-29
	Creating an offset surface	8-29
	Creating a surface fill	8-30
	Creating a lofted feature	8-30
	Creating the new cut profile	8-31
	Adding fillets	8-32



**Chapter 9:**

**Cut with Surface**

**9-1**

Chapter summary	9-1
Tools Needed	9-2
Opening an assembly file	9-3
Editing the Part	9-3
Creating an offset surface	9-4
Creating a surface cut	9-5
Hiding a component	9-6
Hiding a surface	9-6
Removing the sharp edges	9-7
Exiting the component mode	9-8
Calculating the mass	9-8
Exercise: Cut with Surface	9-9



**Chapter 10:**

**Creating a Curved Spring**

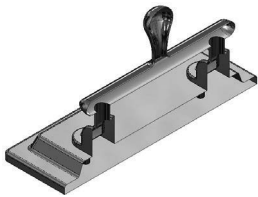
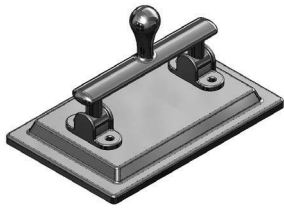
**10-1**

Chapter summary	10-1
Tools Needed	10-2
Starting a new part	10-3
Creating the sweep path	10-3
Creating the sweep profile	10-4
Creating a swept feature	10-4
Assigning material	10-5
Calculating the mass	10-6
Exercise: Circular Spring	10-7



Spring examples 10-10

**Chapter 11: Surface Modifications 11-1**



Opening a part document 11-3  
 Deleting the faces of the model 11-3  
 Measuring the current angle 11-4  
 Rotating the handle 11-5  
 Recreating the deleted surfaces 11-6  
 Hiding a surface body 11-8  
 Trimming surfaces 11-9  
 Showing a surface body 11-10  
 Knitting all surface bodies 11-10  
 Creating a section view 11-11  
 Measuring the mass 11-11

**Glossary**  
**Index**  
**Quick-Guides**

