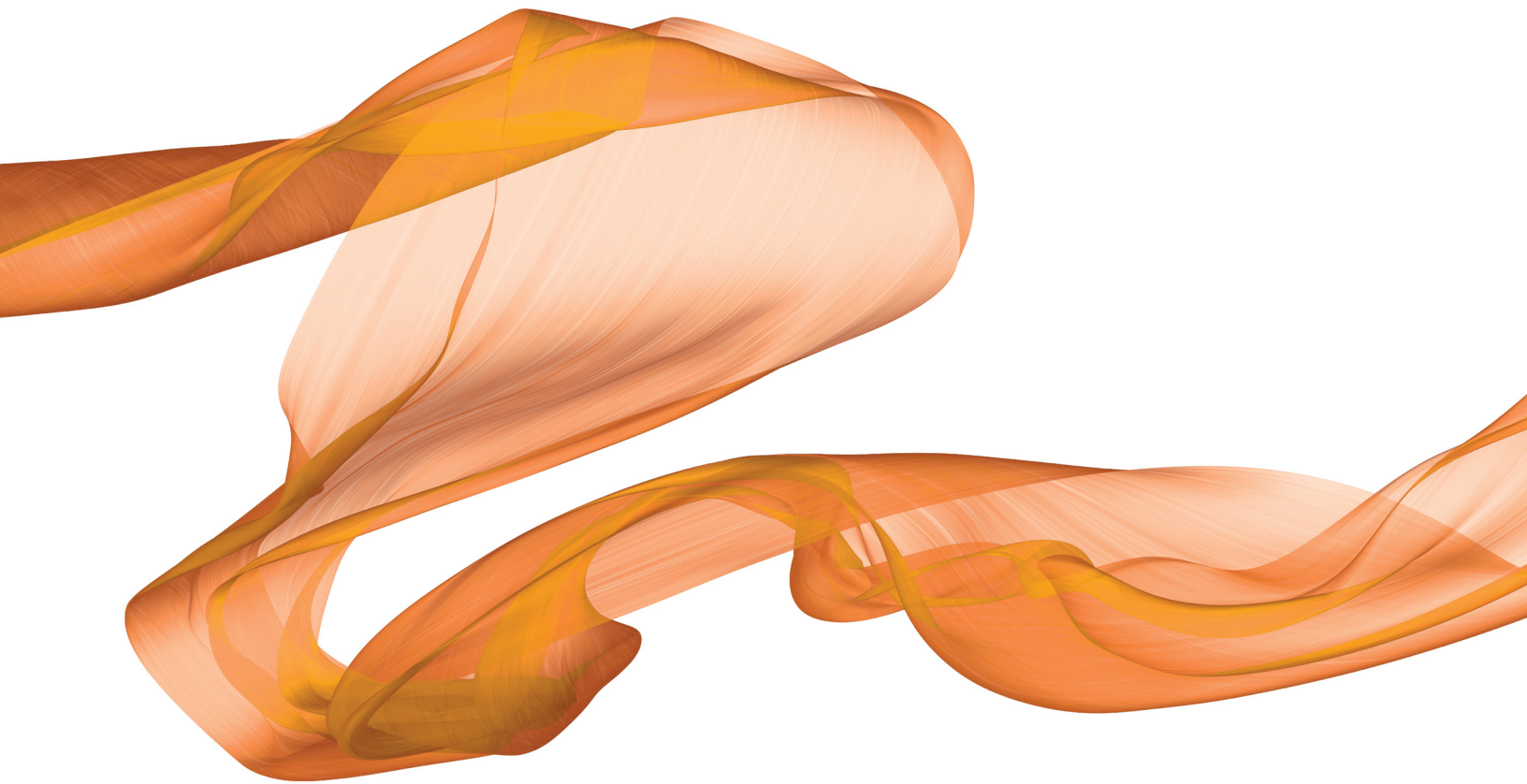


An Introduction to

SOLIDWORKS® Flow Simulation 2019



John E. Matsson, Ph.D., P.E.



Better Textbooks. Lower Prices.
www.SDCpublications.com

Visit the following websites to learn more about this book:



[amazon.com](https://www.amazon.com)

[Google books](https://books.google.com)

[BARNES & NOBLE](https://www.barnesandnoble.com)

Table of Contents

Chapter 1: Introduction	1-1-
SOLIDWORKS Flow Simulation Introduction	1-1-
Setting Up a SOLIDWORKS Flow Simulation Project	1-2-
Meshing in SOLIDWORKS Flow Simulation.....	1-2-
Calculation Control Options	1-4-
Inserting Boundary Conditions	1-4-
Choosing Goals.....	1-5-
Viewing Results.....	1-7-
Limitations of SOLIDWORKS Flow Simulation.....	1-7-
References.....	1-7-
Chapter 2: Flat Plate Boundary Layer	2-1-
Objectives	2-1-
Problem Description	2-1-
Creating the SOLIDWORKS Part	2-2-
Setting Up the Flow Simulation Project	2-8-
Selecting Boundary Conditions	2-10-
Inserting Global Goals	2-14-
Running the Calculations.....	2-16-
Using Cut Plots to Visualize the Flow Field.....	2-17-
Using XY Plots with Templates.....	2-18-
Comparison of Flow Simulation Results with Theory and Empirical Data	2-20-
Cloning of the Project	2-25-
References	2-34-
Exercises	2-34-

Chapter 3: Analysis of the Flow past a Sphere and a Cylinder	3-1-
Objectives	3-1-
Problem Description	3-1-
Creating the SOLIDWORKS Part for the Sphere.....	3-1-
Setting Up the Flow Simulation Project for the Sphere.....	3-10-
Inserting Global Goal for Calculations	3-12-
Running the Calculations	3-14-
Using Cut Plots	3-15-
Inserting Surface Parameters	3-16-
Theory	3-17-
Cloning of the Project	3-18-
Time-Dependent Calculations	3-19-
Creating the SOLIDWORKS Part for the Cylinder.....	3-21-
Setting Up the Flow Simulation Project for the Cylinder.....	3-22-
Inserting Global Goals for Calculations and Selecting 2D Flow	3-23-
Tabular Saving.....	3-24-
Running Calculations for the Cylinder	3-25-
Using Excel for Frequency Analysis	3-26-
Inserting XY Plots.....	3-26-
Strouhal number.....	3-28-
Inserting Cut Plots.....	3-29-
References.....	3-31-
Exercises	3-31-
Chapter 4: Analysis of the Flow past an Airfoil	4-1-
Objectives	4-1-
Problem Description	4-1-

Table of Contents

Creating the SOLIDWORKS Part	4-1-
Setting Up the Flow Simulation Project	4-5-
Inserting Global Goals for Calculations	4-7-
Inserting Equation Goal for Calculations	4-8-
Running the Calculations	4-9-
Using Cut Plots	4-10-
Theory	4-11-
Creating a Custom Visualization Parameter	4-12-
Cloning of the Project	4-16-
Creating a Batch Run	4-17-
Reference	4-20-
Exercises	4-20-
Chapter 5: Rayleigh-Bénard Convection and Taylor-Couette Flow	5-1-
Objectives	5-1-
Problem Description	5-1-
Creating the SOLIDWORKS Part for Rayleigh-Bénard Convection	5-2-
Setting up the Flow Simulation Project for Rayleigh-Bénard Convection	5-4-
Creating Lids.....	5-6-
Inserting Boundary Conditions for Rayleigh-Bénard Convection.....	5-7-
Setting up 2D Flow	5-9-
Inserting Global Goal for Rayleigh-Bénard Convection	5-10-
Running the Calculations	5-10-
Inserting Cut Plots.....	5-12-
Comparison with Neutral Stability Theory.....	5-14-
Creating the SOLIDWORKS Part for Taylor-Couette Flow	5-15-
Setting up the Flow Simulation Project for Taylor-Couette Flow	5-18-

Table of Contents

Inserting Boundary Conditions for Taylor-Couette Cell	5-20-
Inserting Global Goal and Running the Calculations for Taylor-Couette Flow	5-21-
Inserting Surface Plots	5-22-
Comparison with Neutral Stability Theory	5-24-
References	5-25-
Exercises	5-25-
Chapter 6: Pipe Flow	6-1-
Objectives	6-1-
Problem Description	6-1-
Creating the SOLIDWORKS Part	6-1-
Setting up the Flow Simulation Project	6-5-
Creating Lids for the Pipe	6-8-
Modifying the Computational Domain and Mesh	6-9-
Inserting Boundary Conditions	6-11-
Inserting a Global Goal	6-14-
Running the Calculations for Laminar Pipe Flow	6-14-
Inserting Cut Plots	6-15-
Inserting XY Plots for Laminar Pipe Flow using Templates	6-16-
Theory for Laminar Pipe Flow	6-19-
Running Calculations for Turbulent Pipe Flow	6-21-
Theory for Turbulent Pipe Flow	6-22-
Inserting XY Plots for Turbulent Pipe Flow using Templates	6-22-
References	6-26-
Exercises	6-26-

Table of Contents

Chapter 7: Flow across a Tube Bank	7-1-
Objectives	7-1-
Problem Description	7-1-
Creating the SOLIDWORKS Part	7-2-
Setting up the Flow Simulation Project	7-4-
Modifying the Computational Domain and Mesh	7-6-
Inserting Boundary Conditions	7-7-
Inserting Global Goals	7-8-
Running the Calculations for Tube Bank Flow.....	7-9-
Inserting Cut Plots.....	7-10-
Creating Sketch for XY Plots.....	7-11-
Theory and Empirical Data.....	7-14-
Reference	7-16-
Exercises	7-17-
Chapter 8: Heat Exchanger	8-1-
Objectives	8-1-
Problem Description	8-1-
Creating the SOLIDWORKS Part	8-2-
Setting up the Flow Simulation Project	8-11-
Creating Lids	8-13-
Inserting Boundary Conditions	8-14-
Inserting Goals	8-17-
Running the Calculations for Heat Exchanger.....	8-17-
Inserting Surface Parameters	8-19-
Inserting Cut Plots.....	8-20-
Effectiveness – NTU Method	8-21-

Table of Contents

References.....	8-23-
Exercises	8-24-
Chapter 9: Ball Valve	9-1-
Objectives	9-1-
Problem Description	9-1-
Creating the Ball Valve.....	9-2-
Creating the Ball Valve Housing and Pipe Sections.....	9-8-
Creating the Ball Valve and Pipe Assembly.....	9-13-
Setting up the Flow Simulation Project for the Ball Valve.....	9-17-
Creating Lids and Setting the Minimum Gap Size and Number of Cells.....	9-18-
Inserting Boundary Conditions	9-19-
Inserting Goals	9-20-
Running the Calculations for Ball Valve	9-21-
Inserting Cut Plots.....	9-22-
Determining Hydraulic Resistance	9-22-
References.....	9-24-
Exercises	9-24-
Chapter 10: Orifice Plate and Flow Nozzle	10-1-
Objectives	10-1-
Problem Description	10-1-
Creating the Orifice Plate in a Pipe.....	10-2-
Setting up the Flow Simulation Project for the Orifice Plate.....	10-6-
Inserting Boundary Conditions	10-7-
Inserting Goals	10-9-
Running the Calculations for Orifice Plate	10-9-

Table of Contents

Inserting Cut Plots.....	10-11-
Determining Discharge Coefficient for Orifice Plate	10-12-
Inserting XY Plots.....	10-14-
Creating Sketch for XY Plots.....	10-16-
Flow Trajectories	10-17-
Running the Calculations for Long Radius Nozzle.....	10-18-
Determining Discharge Coefficient for Long Radius Nozzle	10-19-
Reference	10-20-
Exercises	10-21-
Chapter 11: Thermal Boundary Layer	11-1-
Objectives	11-1-
Problem Description	11-1-
Setting up the Flow Simulation Project	11-1-
Inserting Boundary Conditions	11-4-
Inserting Goals	11-7-
Running the Calculations for Low Reynolds Number	11-7-
Inserting Cut Plots.....	11-8-
Plotting Temperature Profiles using Template	11-9-
Theory	11-11-
Plotting Non-dimensional Temperature Profiles using Template	11-12-
Plotting Local Nusselt Number using Template	11-13-
Running the Calculations at a High Reynolds Number	11-14-
References.....	11-17-
Exercise.....	11-17-

Chapter 12: Free-Convection on a Vertical Plate and from a Horizontal Cylinder	12-1-
Objectives	12-1-
Problem Description	12-1-
Setting up the Flow Simulation Project	12-2-
Inserting Goals	12-6-
Running Calculations	12-6-
Inserting Cut Plots.....	12-8-
Plotting Temperature and Velocity Profiles using Templates	12-9-
Theory	12-12-
Plotting Non-dimensional Temperature and Velocity Profiles using Templates.....	12-12-
Plotting Local Nusselt Number using Template	12-14-
Creating the SOLIDWORKS Part for Free Convection from a Horizontal Cylinder	12-15-
Setting up the Flow Simulation Project for Free Convection from a Horizontal Cylinder.....	12-16-
Inserting Global Goal and Selecting 2D Flow for Free Convection from a Horizontal Cylinder	12-17-
Tabular Savings for Free Convection from Horizontal Cylinder.....	12-18-
Inserting Boundary Condition for Free Convection from Horizontal Cylinder.....	12-18-
Running Calculations for Free Convection from Horizontal Cylinder	12-19-
Inserting Cut Plots for Free Convection from Horizontal Cylinder.....	12-20-
References	12-21-
Exercises	12-21-
Chapter 13: Swirling Flow in a Closed Cylindrical Container	13-1-
Objectives	13-1-
Problem Description	13-1-
Creating the SOLIDWORKS Part for Swirling Flow in a Closed Cylindrical Container	13-2-
Setting up the Flow Simulation Project for Swirling Flow in a Closed Cylindrical Container	13-3-
Creating Lids	13-6-

Table of Contents

Inserting Boundary Condition for Swirling Flow in a Closed Cylindrical Container13-6-

Inserting Global Goal for Swirling Flow in a Closed Cylindrical Container13-8-

Running the Calculations13-8-

Inserting Flow Trajectories13-10-

Reference13-11-

Exercise13-11-

Chapter 14: Flow past a Model Rocket.....14-1-

Objectives14-1-

Problem Description14-1-

Creating the SOLIDWORKS Parts for the Model Rocket14-1-

Setting up the Flow Simulation Project for Model Rocket14-7-

Inserting Goals for Model Rocket Flow14-9-

Running the Calculations14-9-

Inserting Cut Plots.....14-10-

Reference14-11-

Exercises14-11-