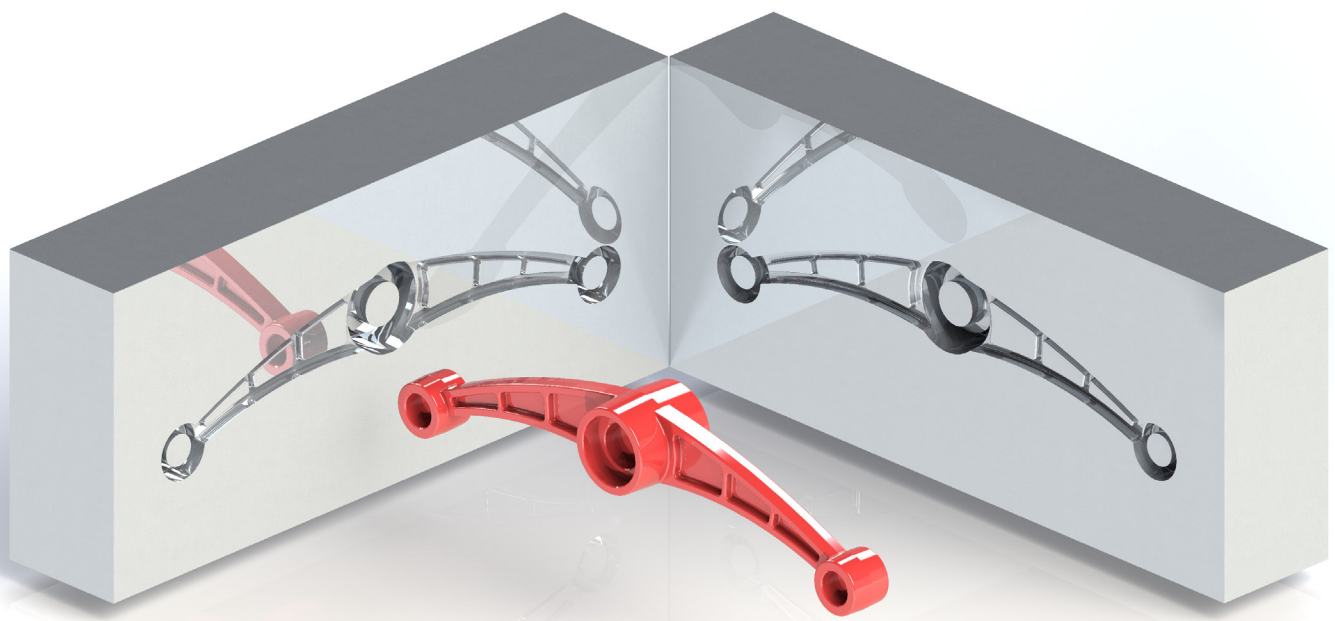


The Complete Guide to
Mold Making with
SOLIDWORKS® 2020

Basic through Advanced Techniques



Paul Tran CSWE, CSWI

Visit the following websites to learn more about this book:



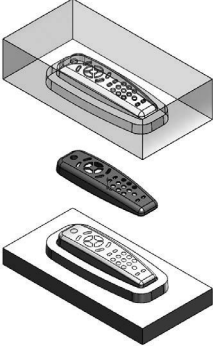




[amazon.com](https://www.amazon.com)

[Google books](https://books.google.com)

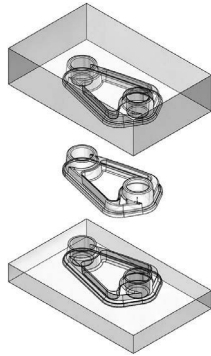
[BARNES & NOBLE](https://www.barnesandnoble.com)

Table of Contents

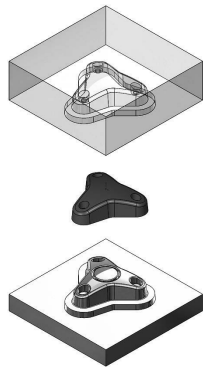
Chapter 1: Plastic Part Design		1-1	
Remote Control		1-1	
	Starting a new part document	1-1	
	Creating the parent sketch	1-1	
	Extruding the main body	1-2	
	Making the upper curved cut	1-2	
	Adding fillets	1-3	
	Shelling the part	1-4	
	Making the recess sketch	1-5	
	Making the recess cut	1-6	
	Copying a sketch	1-7	
	Creating the mounting bosses	1-8	
	Adding the support ribs	1-9	
	Adding the mounting holes	1-10	
	Adding the rib fillets	1-11	
	Assigning material	1-12	
	Changing the part color	1-13	
	Calculating the mass	1-14	
	Creating the core and cavity molds		1-15
		Applying the scale factor	1-15
		Creating the parting lines	1-15
		Creating the shut-off surfaces	1-16
Creating the parting surfaces		1-17	
Adding a reference plane		1-18	
Inserting a tooling split		1-19	
Separating the mold blocks		1-20	
Hiding the references		1-21	
Assigning material to the mold blocks		1-22	
Chapter 2: Surface Repair		2-1	
Mouse		2-1	
	Opening a parasolid document	2-1	
	Running Import Diagnostics	2-1	
	Examining the small surfaces	2-2	
	Deleting surfaces	2-3	
	Deleting hole	2-3	
	Patching the openings	2-4	
	Adding drafts	2-5	
	Creating a split line feature	2-6	
			

Creating a face fillet	2-7
Adding thickness	2-8
Creating a recess cut	2-9

Chapter 3: Core and Cavity Creation 3-1

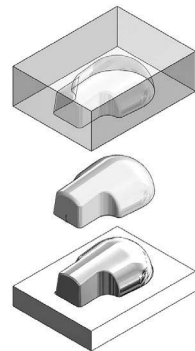


Plastic Tray 3-1	3-1
Opening a part document	3-1
Applying the scale factor	3-1
Creating the parting lines	3-2
Creating a parting surface	3-3
Making the mold block sketch	3-4
Creating a tooling split feature	3-5
Hiding the references	3-6
Assigning materials	3-7
Changing the transparency	3-7
Separating the mold blocks	3-8

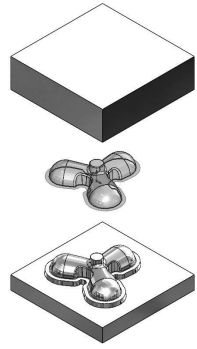
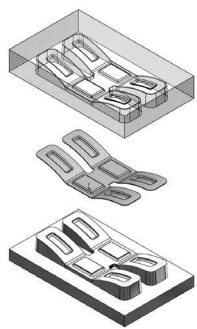
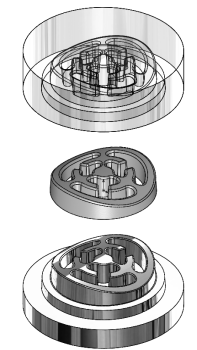
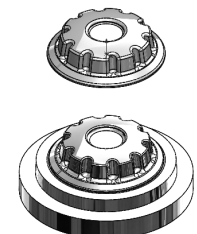


Core and cavity exercise 3-11	3-11
Plastic Knob	
Opening a part document	3-11
Applying the scale	3-11
Creating the parting lines	3-12
Creating the shut-off surfaces	3-13
Creating the parting surfaces	3-14
Adding a new plane	3-15
Making the sketch of the mold block	3-15
Inserting a tooling split feature	3-16
Separating the mold blocks	3-17

Chapter 4: Planar Parting Lines 4-1



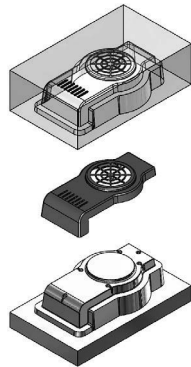
Drone's Canopy 4-1	4-1
Opening a part document	4-1
Scaling the part	4-1
Creating the parting lines	4-2
Creating the parting surfaces	4-3
Making the mold block sketch	4-4
Adding the move/copy command	4-5
Separating the mold blocks	4-6
Hiding the references	4-7
Renaming the mold blocks	4-8
Assigning the materials	4-8
Changing to transparency	4-9

	Planar Parting Lines Exercise	4-11	
	Drone Cover Housing		
	Opening a part document	4-11	
	Scaling the part	4-11	
	Creating the parting lines	4-12	
	Creating the parting surfaces	4-13	
	Adding a new plane	4-14	
	Making the mold block sketch	4-15	
	Inserting a tooling split	4-15	
	Changing materials	4-16	
Chapter 5: Interlock Surface		5-1	
	Stabilizer	5-1	
	Opening a part document	5-1	
	Applying the scale factor	5-1	
	Creating the parting lines	5-2	
	Creating the parting surfaces	5-3	
	Making the mold block sketch	5-4	
	Hiding the references	5-5	
	Separating the mold blocks	5-6	
	Changing the transparency	5-7	
		Plastic Cap	5-9
		Opening a part document	5-9
Applying the scale factor		5-9	
Creating the parting lines		5-10	
Adding the shut-off surfaces		5-11	
Creating the parting surface		5-12	
Adding a new plane		5-13	
Making the mold block sketch		5-13	
Creating a tooling split feature		5-14	
Separating the mold blocks		5-15	
Hiding the references		5-16	
Renaming the solid bodies	5-17		
Assigning materials	5-17		
Changing the transparency	5-18		
	Interlock Surface Exercise	5-19	
	Round Knob		
	Opening a part document	5-19	
	Applying the scale factor	5-19	

Creating the parting lines	5-20
Creating the parting surfaces	5-21
Adding a new plane	5-22
Making the sketch of the mold block	5-22
Inserting a tooling split feature	5-23
Assigning materials	5-24

Chapter 6: Non-Planar Parting Lines 6-1

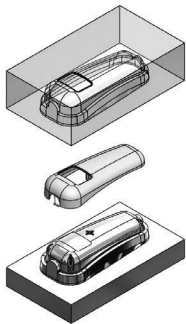
Fan Cover 6-1



Opening a part document	6-1
Applying the scale factor	6-1
Creating the parting lines	6-2
Creating the shut-off surfaces	6-3
Creating the parting surfaces	6-4
Adding a new plane	6-4
Making the mold block sketch	6-5
Splitting the mold blocks	6-5
Hiding the references	6-6
Separating the mold blocks	6-7
Changing the transparency	6-8
Changing the materials	6-9

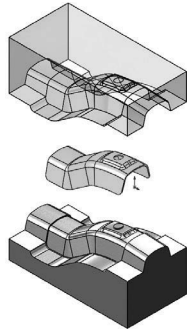
Non-Planar Parting Lines Exercise 6-11

Meter Reader Upper Housing



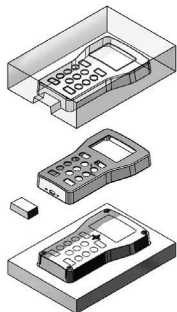
Opening a part document	6-11
Applying scale	6-11
Creating the parting lines	6-12
Creating the parting surfaces	6-13
Adding the ruled surfaces	6-14
Closing off the left end	6-15
Extending the lofted surface	6-15
Trimming the left end	6-16
Closing off the right end	6-17
Extending the lofted and ruled surfaces	6-18
Trimming the right end	6-19
Knitting all surfaces	6-20
Creating the shut off surfaces	6-21
Adding a new plane	6-21
Inserting a tooling split feature	6-22
Separating the mold blocks	6-23
Changing materials	6-24

Chapter 7: Manual Parting Lines 7-1



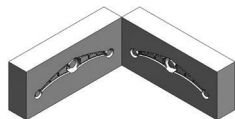
Heat Shield 7-1
 Opening a part document 7-1
 Applying the scale factor 7-1
 Creating the parting lines 7-2
 Creating the shut-off surfaces 7-3
 Creating the parting surfaces 7-4
 Creating the ruled surfaces 7-5
 Trimming with a sketch 7-6
 Making a 3D sketch 7-7
 Creating the first corner patch 7-8
 Patching other corners 7-9
 Knitting the surfaces 7-10
 Creating a reference plane 7-11
 Creating a tooling split 7-12
 Separating the mold blocks 7-13
 Hiding the references 7-14
 Changing the transparency 7-15

Chapter 8: Undercuts and Slide Cores 8-1



Stress Gauge Upper Housing 8-1
 Opening a part document 8-1
 Applying the scale factor 8-1
 Creating the parting lines 8-2
 Creating the shut-off surfaces 8-3
 Creating the parting surfaces 8-4
 Making the mold block sketch 8-5
 Analyzing the undercuts 8-6
 Sketching the slide core profile 8-7
 Extruding the slide core block 8-8
 Separating the mold blocks 8-9
 Moving the slide core block 8-10
 Hiding the references 8-11
 Changing the transparency 8-12

Chapter 9: Alternative Methods 9-1



Using Combine Subtract – Rocker Arm 9-1
 Opening a part document 9-1
 Applying the scale factor 9-1
 Making the mold block sketch 9-2
 Extruding the mold block 9-2
 Creating a combine subtract feature 9-3

Splitting a solid body	9-4
Rotating a solid body	9-5



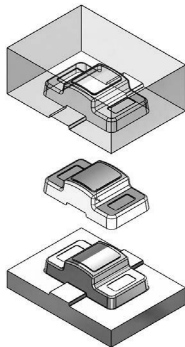
Using Cut with Surfaces – Rocker Arm	9-6
Opening a part document	9-6
Isolating the surface body	9-6
Making the mold block sketch	9-7
Converting to planar surface	9-8
Trimming the surfaces	9-9
Knitting the surfaces	9-10
Making the mold block sketch	9-11
Cutting with a surface	9-12
Moving a solid body	9-13



Using Cavity in Assembly – Rocker Arm	9-14
Opening an assembly document	9-14
Inserting the engineered part	9-14
Editing a component	9-15
Creating an exploded view	9-16

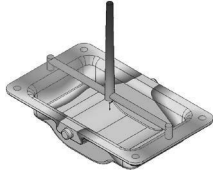
Chapter 10: Thickness Analysis 10-1

Medication Upper Case	10-1
Open a part document	10-1
Setting the parameters	10-1
Analyzing the thickness	10-2
Creating a section view	10-3
Re-arranging the shell feature	10-4
Scaling the part	10-5
Creating the parting lines	10-5
Creating a parting surface	10-6
Adding a new plane	10-7
Making the mold block sketch	10-7
Extruding the mold blocks	10-8
Hiding the references	10-9
Separating the mold blocks	10-10
Changing the transparency	10-11



Chapter 11: Using the Plastics Wizard 11-1

Fill Tray	11-1
Opening a part document	11-1
Enabling SOLIDWORKS Plastics	11-1



Starting the wizard	11-2
Selecting material	11-4
Adding injection location	11-4
Running a flow analysis	11-5
Viewing the flow results	11-6
Completing the analysis	11-9

Chapter 12: Plastics Flow Analysis **12-1**



Flow Simulation Analysis	12-1
Opening a part document	12-1
Enabling Plastics	12-1
Setting up the mesh	12-2
Viewing the PlasticsManager tree	12-3
Selecting a polymer	12-4
Adding an injection location	12-5
Running the flow analysis	12-6
Viewing the fill-time slot	12-7
Animating the results	12-8
Displaying the weld line	12-9
Viewing the results	12-10

Glossary

Index

SOLIDWORKS 2020 Quick-Guides:

Quick Reference Guide to SOLIDWORKS 2020 Command Icons and Toolbars.