

SOLIDWORKS® 2020

Intermediate Skills

Expanding on Solids, Surfaces, Multibodies,
Configurations, Drawings, Sheet Metal
and Assemblies



Paul Tran CSWE, CSWI

Visit the following websites to learn more about this book:



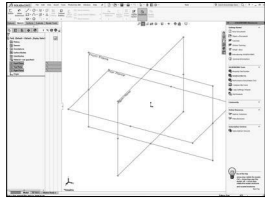
amazon.com

Google books

BARNES & NOBLE

Table of Contents

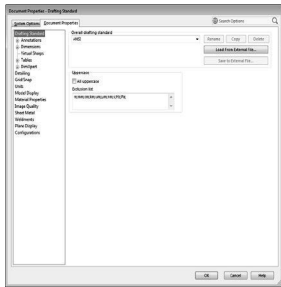
Introduction:



SOLIDWORKS 2020 User Interface

The 3 reference planes	XIX
The toolbars	XX
The system feedback symbols	XX
The status bar	XXII
2D sketch examples	XXII
3D feature examples	XXIII
	XXIV

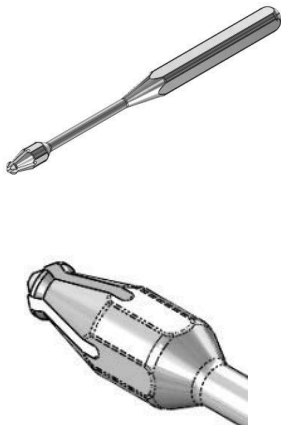
Chapter 1:



Document Properties

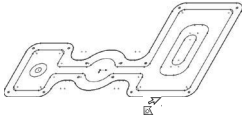
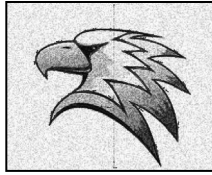
	1-1
Setting up the Document Template	1-1
Different standards in the world	1-2
Starting a new part document	1-3
Setting the ANSI drafting standards	1-3
Setting the dimension options	1-4
Setting the virtual sharp options	1-5
Setting the units options	1-5
Setting the image quality options	1-6
Saving the settings as a Part Template	1-6
Customizing Keyboard Shortcuts	1-7
Customizing Tool Buttons	1-12

Chapter 2:



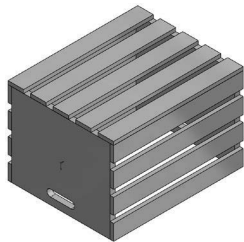
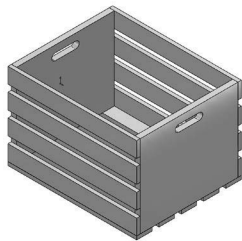
Sketching Skills

Handle	2-1
Tools Needed	2-1
Starting a new part document	2-2
Changing the System Options	2-3
Creating the Parent Sketch	2-3
Revolving the parent sketch	2-4
Adding the tip detail	2-7
Revolving the sketch	2-7
Transitioning from line-to-arc	2-8
Mirroring in sketch mode	2-8
Adding dimensions	2-9
Extruding a cut	2-10
Creating a circular pattern	2-10
	2-11



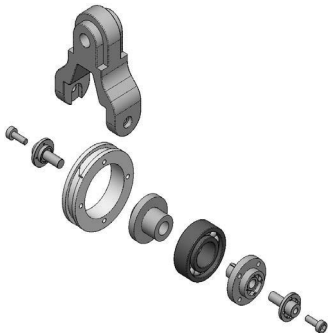
Adding other cut features	2-12
Creating another circular pattern	2-13
Adding a constant size fillet	2-14
Assigning material to the model	2-15
Calculating the mass of the model	2-16
Saving your work	2-16
Working with Sketch Pictures	2-17
Re-using the geometry	2-35

Chapter 3:



Creating Multibody Parts	3-1
Wooden Crate	3-1
Tools needed	3-2
Starting a new part document	3-3
Sketching the first body profile	3-4
Extruding the first body	3-6
Copying the body	3-6
Creating the upper plank	3-7
Creating the first linear pattern	3-9
Mirroring the planks	3-10
Creating the lower plank	3-10
Creating the second linear pattern	3-12
Creating an exploded view	3-13
Collapsing the view	3-15
Saving your work	3-16
Exercise: Combining Multibodies	3-17

Chapter 4:



Working with Multibody Parts	4-1
Creating Mates & Exploded Views	4-1
Tools needed	4-2
Opening a part document	4-3
Creating an exploded view	4-4
Collapsing the solid bodies	4-6
Inserting another part	4-7
Constraining the solid bodies	4-8
Adding a concentric mate	4-8
Adding a coincident mate	4-9
Creating a new mirror plane	4-10
Creating a mirror body	4-11
Inserting another part	4-13
Adding a concentric mate	4-14
Adding a coincident mate	4-14

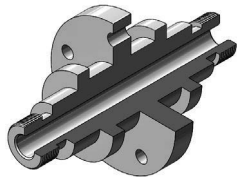


Adding another instance of the bolt	4-15
Adding a concentric mate	4-15
Adding a coincident mate	4-16
Editing the exploded view	4-16
Saving your work	4-17
Working with Multibodies	4-19

Chapter 5:

Revolved and Thread Features

5-1



Cylinder	5-1
Tools needed	5-2
Opening a part document	5-3
Creating a revolved feature	5-3
Adding chamfers	5-4
Creating the mounting holes	5-4
Adding threads	5-7
Adding threads to the opposite end	5-9
Creating a zonal section view	5-11
Saving your work	5-12
Exercise: Revolved & Threads	5-13



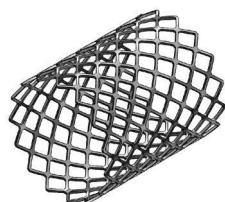
Chapter 6:

Flex Bending

6-1



Spanner	6-1
Tools needed	6-2
Flex Bending - Part 1	6-3
Opening a part document	6-3
Creating the first flex bending feature	6-3
Creating the second flex bending feature	6-5
Flex examples	6-6
Flex twisting	6-6
Flex stretching	6-6
Flex tapering	6-7
Flex bending	6-7
Flex Bending - Part 2	6-8
Opening a part document	6-8
Creating a flex bending	6-8
Creating a linear pattern	6-10
Using the Deform feature	6-11
Opening a part document	6-11
Creating a Curve-to-Curve deform	6-11
Save and close	6-12
Opening a part document	6-13



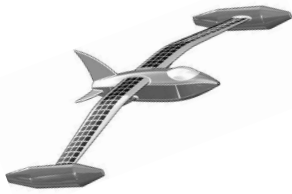
Creating a Curve to Curve deform	6-13
Mirroring a surface body	6-14
Save and close all documents	6-14

Chapter 7:	Sweep with Guide Curves	7-1
	Plastic Bottle	7-1
	Tools needed	7-2
	Opening a part document	7-3
	Creating the main body	7-3
	Creating the first split line	7-5
	Creating a face fillet	7-6
	Creating the second split line	7-7
	Creating the first offset surface	7-8
	Creating a ruled surface	7-8
	Creating the first knit surface	7-9
	Adding the first fillet	7-9
	Making the first cut with surface	7-10
	Creating the first offset surface	7-11
	Creating the second offset surface	7-11
	Creating the second knit surface	7-12
	Adding the second fillet	7-12
	Making the second cut with surface	7-13
	Adding the third fillet	7-14
	Creating a shell	7-14
	Adding the neck feature	7-15
	Revolving the sketch	7-16
	Creating a new plane	7-16
	Creating a helix	7-17
	Sketching the thread profile	7-18
	Making the threads	7-19
	Rounding off the ends of threads	7-19
	Revolving the sketch	7-20
	Rounding off the opposite side	7-20
	Sweep with Solid Body	7-21
	Exercise: Sweep vs. Loft	7-29



Chapter 8:	Lofts and Boundaries	8-1
	Solar Boat	8-1
	Tools needed	8-2
	Opening a part document	8-3
	Creating a lofted feature	8-3





Creating the boundary feature	8-5
Creating the wing	8-6
Creating the wing support	8-7
Constructing the nose feature	8-8
Creating the horizontal tail fins	8-11
Creating the vertical tail fin	8-12
Creating a split line	8-13
Creating the canopy's first profile	8-14
Creating a new plane	8-15
Sketching the guide curve	8-15
Creating the canopy's second loft profile	8-16
Creating the canopy's third loft profile	8-16
Creating the canopy	8-17
Creating a mirror feature	8-17
Adding fillets to the main body	8-18
Adding fillets to the float and wing	8-18
Adding fillets to the ends of the floats	8-19
Adding fillets to the tail fins	8-19
Adding fillets to the ends of the fins	8-20
Creating a face fillet	8-20
Creating a split line for the solar panels	8-21
Changing the color of the solar squares	8-22
Changing the edge display	8-23
Exercise: Surface & Solid Modeling	8-25

Chapter 9:

Surfaces and Patches

9-1

Welding Fixture

9-1

Tools needed

9-2

Opening a part document

9-3

Creating a swept surface

9-3

Creating the first extruded surface

9-4

Creating the second extruded surface

9-4

Creating the third extruded surface

9-5

Creating the first trimmed surface

9-5

Creating the second trimmed surface

9-6

Creating the third trimmed surface

9-7

Creating a lofted surface

9-9

Creating the first boundary surface

9-10

Creating the second boundary surface

9-11

Creating the first filled surface

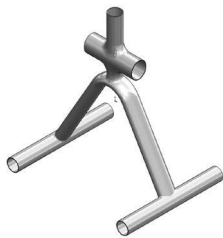
9-12

Creating the second filled surface

9-13

Creating a face fillet

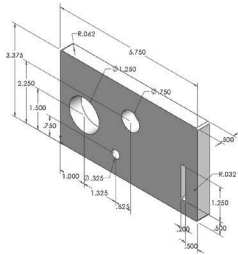
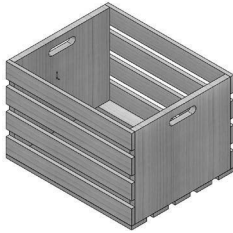
9-14





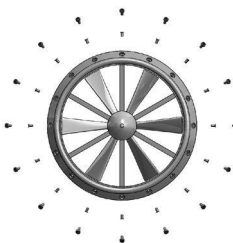
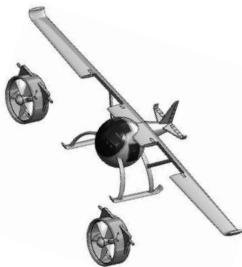
Knitting the surfaces	9-15
Thickening the surface model	9-16
Creating a section view	9-17
Changing the edge display	9-18
Exercise: Surface Modifications	9-19

Chapter 10:

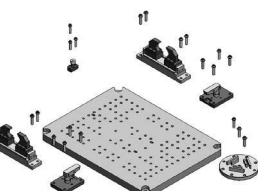
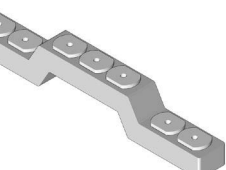


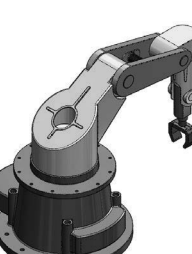

Configure Features	10-1
Wooden Crate	10-1
Tools needed	10-2
Opening a part document	10-3
Configuring features	10-3
Saving the table	10-5
Adding new configurations	10-5
Viewing the new configuration	10-6
Adding more configurations	10-7
Renaming a configuration	10-9
Inserting a design table	10-10
Adding a material column	10-11
Exercise: Design Tables & Tabulated Tables	10-15

Chapter 11:



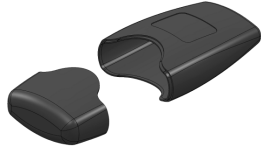
Assembly Motions & Mates	11-1
HeliDrone	11-1
Tools needed	11-2
Opening an existing assembly document	11-3
Using the width mate	11-3
Adding a concentric mate	11-4
Adding another concentric mate	11-6
Testing the assembly motions	11-6
Adding a limit-angle mate	11-7
Adding a parallel mate	11-8
Adding a gear mate	11-9
Testing the assembly motions	11-10
Radial Explode	11-11
Opening an existing assembly	11-11
Creating the first pattern driven	11-11
Creating the second pattern driven	11-12
Creating the first radial exploded view	11-13
Creating the second radial exploded view	11-13
Changing to the configuration tree	11-14
Verifying the exploded view	11-14
Exercise: Assembly Motions	11-15

Chapter 12:	Using Smart-Mates	12-1
 	Fixture Assembly	12-1
	Tools Needed	12-2
	Opening an existing assembly document	12-3
	Enabling the selection options	12-3
	Exploring the Smart-Mate options	12-4
	Using Smart-Mate Concentric	12-5
	Creating a Smart-Mate Concentric & Coincident	12-6
	Repeating the previous mate	12-7
	Mating other components	12-8
	Checking the status of the components	12-9
	Switching configuration	12-9
	Creating an instance of the bolt	12-10
	Creating another instance of the bolt	12-11
	Adding more bolts	12-12
	Repeating	12-13
Mate Controller	12-15	
Using copy with mates	12-25	

	Chapter 13:	Top Down Assembly	13-1
		Car Remote Control Housing	13-1
		Tools Needed	13-2
		Opening a part document	13-3
		Making an assembly from part	13-3
		Placing the first component	13-4
		Creating a new part	13-4
		Converting the entities	13-5
		Extruding the sketch	13-6
		Adding the fillet	13-6
		Shelling the part	13-7
		Hiding a component	13-7
		Adding features to the part	13-8
		Creating offset entities	13-9
		Extruding the sketch	13-10
		Adding the fillet	13-10
		Showing a component	13-11
		Creating a section view	13-11
		Applying dimension changes	13-12
		Creating an exploded view	13-14
		Playing the animation	13-15
		Changing the display mode	13-16
		Creating a Flat Spring Assembly	13-17

Exercise: Spring Assembly	13-29
---------------------------	-------

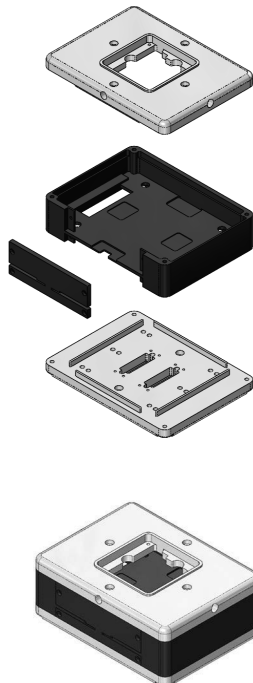
Chapter 14: Using the Lip & Groove Options 14-1



Lesson overview	14-1
Tools Needed	14-2
Top Down Assembly	14-3
Opening the existing assembly	14-4
Editing the housing	14-4
Creating a section view	14-7
Using the Mounting Boss Options	14-8
Opening the existing assembly	14-9
Editing part	14-9
Setting the parameters	14-9
Adding two more mounting bosses	14-11
Toggling between Explode and the collapse views	14-11
Creating the mating bosses	14-12
Creating a section view	14-14
Repeating	14-14

Chapter 15: Assembly Drawings & BOMs 15-1

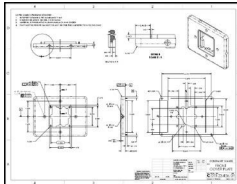
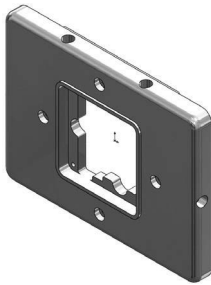
Aluminum Enclosure 15-1



Tools needed	15-2
Starting a new drawing document	15-3
Selecting the ANSI standard sheet size	15-3
Switching to ANSI standards	15-4
Using the view palette	15-5
Inserting a Bill of Materials	15-6
Modifying the BOM's Row Height	15-8
Adding a new column	15-8
Customizing the new column	15-9
Changing the color of the paper	15-10
Adding balloons	15-11
Adding an isometric view	15-12
Changing the display of a drawing view	15-13
Editing the sheet format	15-13
Switching back to the sheet	15-16
Reference reading: GD&T	15-18
Form examples	15-18
Orientation examples	15-19
Profile examples	15-19
Runout examples	15-20
Location examples	15-20

ASME – Y14.5 Symbol descriptions	15-22
Feature control frames	15-25
MMC maximum material condition	15-26
LMC least material condition	15-26

Chapter 16:	Drawings & Detailing	16-1
	Front Cover Plate	16-1
	Tools needed	16-2
	Opening a part document	16-3
	Creating the drawing views	16-4
	Changing to phantom line style	16-6
	Creating a partial section view	16-7
	Flipping the section direction	16-8
	Changing the hatch pattern	16-8
	Creating a detail view	16-9
	Inserting the model dimensions	16-10
	Cleaning up the dimensions	16-11
	Inserting dimensions to another view	16-12
	Breaking the view alignment	16-13
	Creating a projected view	16-14
	Adding the centerline symbol	16-15
	Adding datums	16-16
	Adding a flatness tolerance	16-18
	Copying the control frame	16-20
	Modifying the geometric tolerance	16-21
	Adding another position tolerance	16-22
	Adding a symmetric tolerance	16-23
	Adding a bilateral tolerance	16-23
	Adding a limit tolerance	16-24
	Adding a basic tolerance	16-24
	Adding general notes	16-25
	Filling out the title block	16-26
	Exercise: Creating a drawing from a model	16-29
	Exercise: Attaching a note or symbol to a dimension	16-30

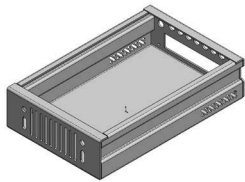


Chapter 17:	SOLIDWORKS MBD	17-1
	Introduction to Model Based Definition	17-1
	Tools needed	17-2
	Prismatic Parts	17-3
	Opening a part document	17-3
	Enabling SOLIDWORKS MBD	17-3

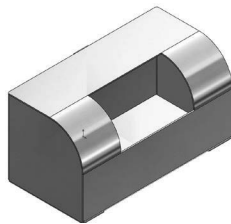


Setting the options	17-3
Adding datums	17-5
Using scope	17-6
Showing the constraint status	17-7
Adding the size dimensions	17-8
Showing the tolerance status	17-8
Exercise: Adding the Size and Location Dimensions	17-9
Turned Parts	17-13
Capturing 3D Views	17-19
Publishing PDF and eDrawing Files	17-23
3D PDF Template Editor	17-29

Chapter 18:



Sheet Metal Parts	18-1
Hard Drive Enclosure	18-1
Tools needed	18-2
Starting a new part document	18-3
Creating the Base flange	18-4
Creating a cut feature	18-5
Creating the first edge flange	18-6
Creating the second edge flange	18-9
Copying and Pasting a sketch	18-11
Creating more cuts	18-13
Adding a library feature cut	18-15
Mirroring a feature	18-17
Toggling the flat display	18-18
Creating the flat pattern	18-19
Accessing the sheet properties	18-20
Multibody sheet metal parts	18-21
Using FeatureWorks – Feature Recognition	18-37



Chapter 19:

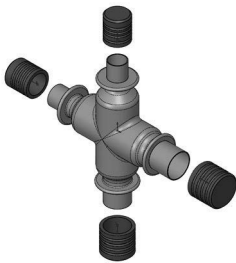


Plastic parts	19-1
Plastic Part_Design1	19-1
Tools Needed	19-2
Making the base feature with draft	19-3
Creating a curved cut feature	19-4
Adding the raised features	19-5
Adding fillets	19-6
Shelling the model	19-6
Adding the interlock feature	19-7
Creating a face fillet	19-8
Adding another fillet	19-9



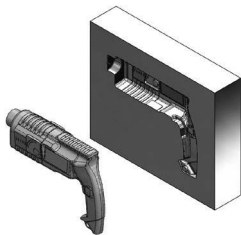
Creating the side holes	19-10
Plastic Part_Design2	19-11
Extruding the base feature	19-11
Adding the corner fillets	19-12
Creating a new plane	19-14
Sketching the button holes	19-14
Shelling the model	19-16
Making the interlock feature	19-18
Adding a fillet	19-20
Adding the mounting bosses	19-22
Adding the fillet	19-24

Chapter 20:



Smart Component	20-1
Auto Size & Configurator Table	20-1
Tools needed	20-2
Opening a part document	20-3
Showing the dimensions and their names	20-3
Splitting the FeatureManager tree	20-4
Adding a new configuration	20-4
Creating mate references	20-6
Testing the mate references	20-7
Making a smart component	20-8
Testing the smart component	20-9
Adding other instances of the cap	20-10

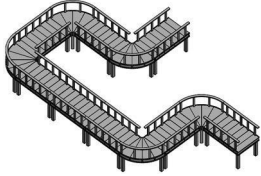
Chapter 21:



Using Subtract & Intersect	21-1
Simple Cavity	21-1
Tools needed	21-2
Opening a part document	21-3
Scaling the part	21-3
Extruding the mold block	21-3
Assigning material	21-4
Copying a solid body	21-4
Creating the cavity	21-5
Separating the solid bodies	21-6
Using the intersect tool	21-7
Exercise: Creating a Cavity with Combine Subtract	21-10

Chapter 22:

Using Magnetic Mates	22-1
Deck Assembly	22-1



Tools needed	22-2
Opening a part document	22-3
Publishing an asset	22-4
Opening another part document	22-6
Defining another asset publisher	22-7
Opening an assembly document	22-8
Adding the section1 component to the assembly	22-9
Adding another instance of section1	22-10
Adding more instances	22-11

Chapter 23:

Hybrid Modeling

23-1

Remote Control

23-1

Tools needed	23-2
Opening a part document	23-3
Extruding the first surface	23-3
Extruding the second surface	23-4
Trimming the surfaces	23-4
Thickening the surfaces	23-5
Creating a split line feature	23-5
Adding draft	23-6
Adding fillets	23-7
Shelling the solid body	23-8
Cutting the solid body	23-8
Saving the upper half	23-9
Saving the lower half	23-9
Flipping the cut direction	23-9
Inserting the top half	23-10
Creating the cut for the keypad	23-11
Separating the two halves	23-12
Changing appearance	23-12



Glossary

Index

SOLIDWORKS 2020 Quick-Guides

