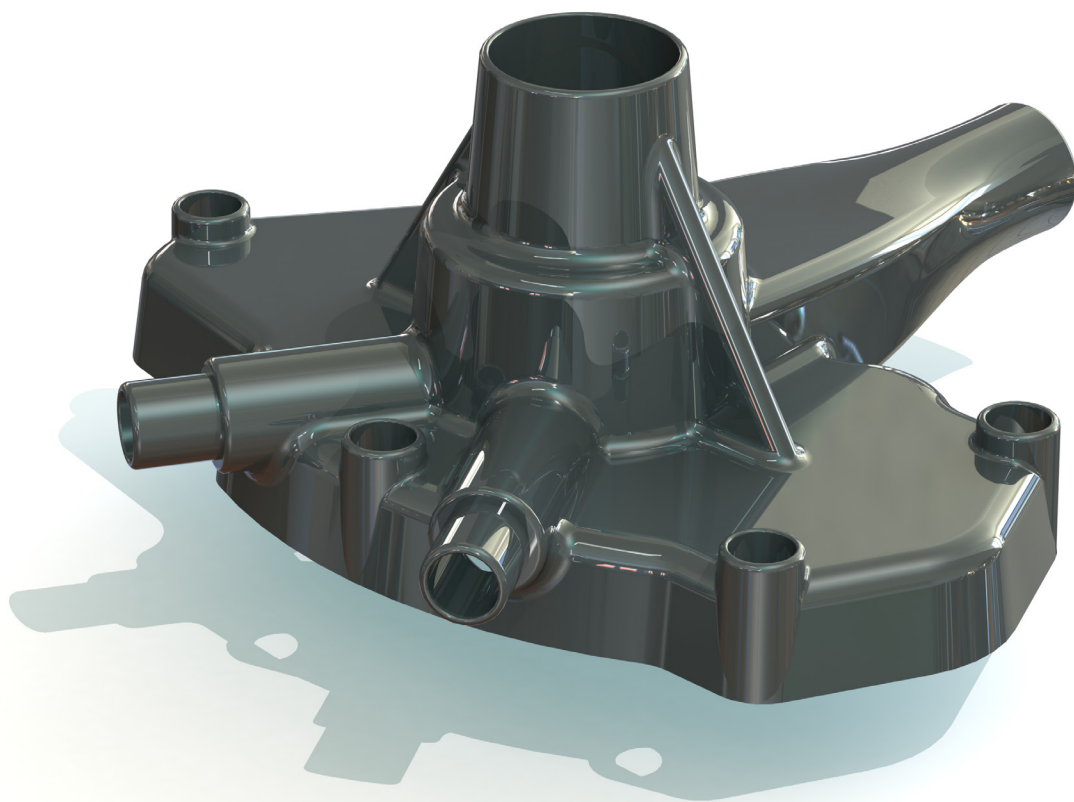


# SOLIDWORKS® 2020 Advanced Techniques

Mastering Parts, Surfaces, Sheet Metal,  
SimulationXpress, Top Down Assemblies,  
Core & Cavity Molds



Paul Tran CSWE, CSWI

Visit the following websites to learn more about this book:



[amazon.com](https://www.amazon.com)

[Google books](https://books.google.com)

[BARNES & NOBLE](https://www.barnesandnoble.com)

# Table of Contents

## Introduction SOLIDWORKS 2020 User Interface

XXIII

The 3 reference planes

XXIV

The toolbars

XXIV

The system feedback symbols

XXVI

The status bar

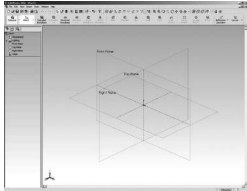
XXVI

2D sketch examples

XXVII

3D feature examples

XXVIII



## Advanced Modeling Topics

### Chapter 1

#### Introduction to 3D Sketch

1-1

Tools Needed

1-2

Creating a 3D Sketch

1-3

Completing the profile

1-4

Adding dimensions

1-5

Adding the sketch fillets

1-6

Creating the swept feature

1-7

Questions for review

1-8

Exercise: Sweep with 3D Sketch

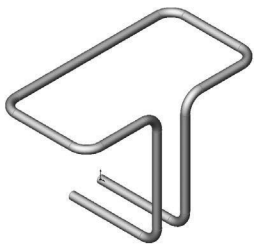
1-9

Exercise: 3D Sketch & Planes

1-10

Exercise: 3D Sketch & Composite Curve

1-17



### Chapter 2

#### Plane Creation

2-1

##### Advanced Topics

2-1

Tools Needed

2-2

Revolving the base profile

2-3

Creating a tangent plane

2-4

Creating a flat surface

2-5

Extruding a cut

2-6

Creating an at-angle plane

2-7

Showing the sketches

2-8

Creating a coincident plane

2-9

Creating a parallel plane

2-10

Creating the recess

2-11

Creating an offset-distance plane

2-12

Creating the bore holes

2-12

Creating a perpendicular plane

2-13



Creating the side-grips	2-14
Creating a circular pattern of the grips	2-15
Creating a Mid-Plane	2-17
Adding fillets to all edges	2-19
Questions for Review	2-20
Exercise: Create New Planes	2-22

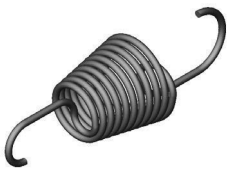
**Chapter 3    Advanced Modeling    3-1**

<b>5/8" Spanner</b>	3-1
Tools needed	3-2
Opening the spanner sketch document	3-3
Creating the transition sketch	3-4
Creating a new work plane	3-6
Creating the closed-end sketch	3-7
Extruding the closed-end feature	3-7
Adding a 12-sided polygon hole	3-8
Creating the recess profile	3-9
Mirroring the recessed feature	3-10
Adding fillets	3-11
Adding text	3-13
Extruding the text	3-14
Questions for Review	3-17
Exercise: Circular text wraps	3-19



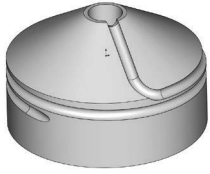
**Chapter 4    Sweep with Composite Curves    4-1**

<b>Helical Extension Spring</b>	4-2
Tools needed	4-2
Converting the circle into a helix	4-3
Creating a 2-degree plane	4-4
Sketching the large loop	4-5
Sketching the large hook	4-5
Creating a parallel plane	4-6
Creating a Composite Curve	4-8
Sweeping the profile along the path	4-11
Other spring examples	4-12
Questions for review	4-13
Exercise: Circular Spring – 180 deg.	4-14



<b>Using Variable Pitch</b>	4-17
Multi-Pitch Spring with Closed Ends	4-18
Tools Needed	4-18





Creating the base sketch	4-19
Creating a helix using variable pitch	4-19
Sweeping the profile along the path	4-21
Creating a trimmed sketch	4-22
Creating the flat ends	4-22
Extruding a cut	4-22
Questions for Review	4-23
Exercise: Projected Curve & Composite Curve	4-24

**Chapter 5    Advanced Modeling with Sweep & Loft**

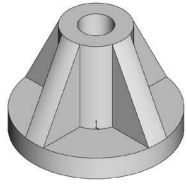


<b>Water Pump Housing</b>	5-1
Tools Needed	5-2
Understanding the draft options	5-2
Extruding the base with draft	5-3
Sketching the upper inlet port	5-4
Revolving the upper inlet port	5-5
Adding fillets	5-5
Creating offset-distance planes	5-6
Creating a loft feature	5-6
Creating the mounting bosses	5-10
Sketching the rear inlet port	5-11
Revolving the rear inlet port	5-12
Adding face Fillets	5-12
Mirroring the rear inlet port	5-13
Shelling the part	5-15
Adding a rib	5-16
Mirroring the rib	5-17
Adding fillets	5-18

**Chapter 6    Loft vs. Sweep**



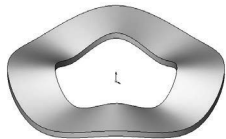
<b>Water Meter Housing</b>	6-1
Tools Needed	6-2
Sketching the loft profile	6-2
Constructing loft profiles / features	6-3
Creating the inlet feature	6-5
Constructing the Inlet / outlet profiles	6-6
Constructing the centerline parameter	6-6
Creating the outlet loft feature	6-10
Shelling the part	6-11
Extruding the left / right brackets	6-13
Constructing the upper ring	6-14



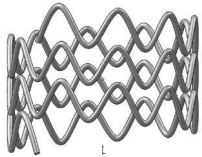
Adding fillets	6-17
Adding chamfers	6-18
Questions for Review	6-19
Exercise: Loft	6-20

**Chapter 7**

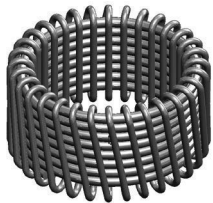
<b>Loft with Guide Curves</b>	<b>7-1</b>
-------------------------------	------------



<b>Waved Washer</b>	<b>7-2</b>
Tools Needed	7-2
Creating the construction profile	7-3
Creating an offset distance plane	7-4
Positioning the derived sketch	7-5
Creating a curve through reference points	7-5
Sketching the loft sections	7-7
Creating the loft section using derived sketch	7-7
Creating a loft with guide curve	7-10
Hiding the construction sketches	7-11
Questions for review	7-12
Exercise: Using Curve Driven Pattern	7-13

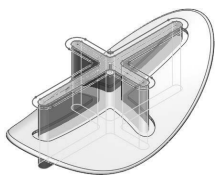


<b>Advanced Sweep</b>	<b>7-19</b>
Wire Form	7-20
Tools Needed	7-20
Creating the sweep path	7-21
Creating the sweep profile	7-22
Creating a sweep feature	7-23
Creating a circular Sketch pattern	7-25
Converting to construction geometry	7-26
Creating a derived sketch	7-27
Creating a 3D sketch	7-28
Creating the sweep feature	7-32
Exercise: Using Curve Through Reference Points	7-33



**Chapter 8**

<b>Using Surfaces</b>	<b>8-1</b>
-----------------------	------------



<b>Advanced Modeling</b>	<b>8-2</b>
Tools Needed	8-2
Constructing a new work plane	8-3
Sketching the loft profiles	8-3
Creating a surface-loft	8-6
Splitting the surface	8-7
Deleting surfaces	8-8



Thickening the surface	8-9
Calculating the angle between the faces	8-10
Adding a full round fillet	8-12
Sketching the slot contours	8-13
Extruding cut the contour	8-15
Questions for Review	8-17



<b>Lofted Surface</b>	<b>8-19</b>
Creating new offset planes	8-19
Sketching the first profile	8-20
Selecting the loft profiles	8-21
Lofting between the profiles	8-22
Creating a revolved sketch	8-23
Copying the revolved surface	8-24
Trimming the base part	8-25
Hiding the surfaces	8-25
Filling the openings with surface-fill	8-26
Creating a Surface-Knit	8-29
Adding fillets	8-30
Creating a solid from the surface model	8-31
Removing the upper half	8-32
Questions for Review	8-36
Exercise: Loft & Delete Face	8-37



**Chapter 9 Offset Surface & Ruled Surface 9-1**



Tools Needed	9-2
Using offset & ruled surface options	9-3
Creating the base loft	9-4
Creating split lines	9-5
Creating offset surfaces	9-6
Creating a ruled surface	9-7
Knitting the 2 surfaces	9-8
Showing the solid body	9-10
Creating the surface cut	9-10
Exercise: Advanced Surfaces	9-13
Exercise: Advanced Surfacing Techniques	9-15



**Chapter 10 Advanced Surfaces 10-1**

<b>Computer Mouse</b>	<b>10-2</b>
Tools Needed	10-2



Sketching the profiles	10-3
Extruding a surface	10-4
Trimming the surfaces	10-5
Mirroring the surfaces	10-6
Creating filled surfaces	10-7
Creating a planar surface	10-9
Creating a Knit surface	10-10
Creating fillets	10-11

**Using Filled Surfaces 10-13**



Patch with Curvature Controls	10-13
Tools Needed	10-14
Enabling the surfaces toolbar	10-15
Creating a planar surface	10-16
Creating a surface fill with tangent control	10-16
Creating a surface fill with curvature control	10-18
Knitting all surfaces	10-19
Creating a solid body	10-19
Patch Types	10-20
Questions for Review	10-22



<b>Boundary and Freeform Surfaces 10-23</b>	
Creating the 1st boundary surface	10-23
Creating the 2nd boundary surface	10-26
Creating the Freeform feature	10-28

**Chapter 11 Surfaces vs. Solid Modeling 11-1**



<b>Safety Helmet 11-2</b>	
Tools Needed	11-2
Constructing the body of Helmet	11-3
Creating a new work plane	11-4
Sketching the sweep-profile	11-4
Creating the sweep path	11-5
Adding a planar surface	11-6
Knitting the three surfaces bodies into one	11-6
Creating a section view	11-7
Adding an extruded cut feature	11-7
Adding a revolve cut feature	11-9
Adding the side cut features	11-10
Creating the Cut-out slot	11-11
Creating the sweep cut	11-13
Adding fillets	11-13

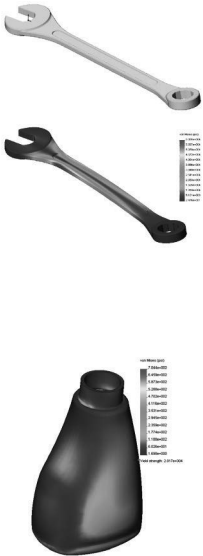




Exercise: Advanced Loft – Turbine Blades	11-15
Exercise: Advanced Sweep – Candle Holder	11-16

**Advanced: Final Exam 11-23**

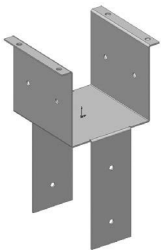
**Chapter 12 SimulationXpress 12-1**



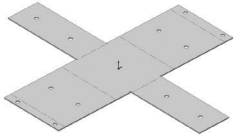
<b>Using the Analysis Wizard</b>	12-2
Tools Needed	12-2
Starting SimulationXpress	12-3
Setting up the units	12-4
Adding a fixture	12-5
Applying a force	12-7
Selecting the material	12-8
Analyzing the model	12-9
Viewing the Results	12-10
Creating the report	12-12
Viewing the report	12-12
Generating the eDrawings file	12-16
Questions for Review	12-19
Exercise 1: SimulationXpress: Force	12-20
Exercise 2: SimulationXpress: Pressure	12-21

**Sheet Metal Topics**

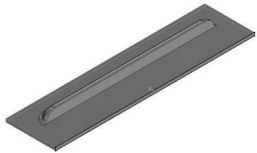
**Chapter 13 Sheet Metal Parts 13-1**



<b>Post Cap</b>	13-2
Tools Needed	13-2
Starting with the Base Profile	13-3
Extruding the Base Flange	13-3
Creating an Edge Flange	13-4
Editing the Edge Flange Profile	13-5
Viewing the Flat Pattern	13-6
Changing the Fixed Face	13-6
Creating a Sketch Bend	13-7
Adding the Side Holes	13-11
Making the Flat Pattern	13-12
Using Sheet Metal Costing	13-13
Inputting the information	13-14
Setting the Baseline	13-15
Questions for Review	13-17

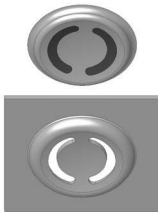


<b>Vents</b>	<b>13-18</b>
Tools Needed	13-19
Sketching the first profile	13-20
Extruding the Base-Flange	13-21
Creating the Miter-Flanges	13-22
Flattening the Part	13-24
Creating a new Forming Tool	13-25
Other Rectangle Options	13-26
Extruding the Base	13-27
Building the louver body	13-27
Creating the Positioning Sketch	13-31
Saving the Form Tool	13-33
Applying the Form Tool	13-34
Positioning the Form Tool	13-35
Adding a mounting hole	13-36
Creating a Linear Pattern	13-37
Creating an Axis	13-38
Creating a Circular Pattern	13-39
Questions for Review	13-40



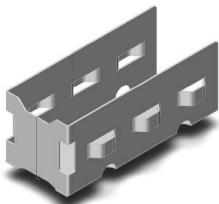
**Chapter 14 Sheet Metal Forming Tools 14-1**

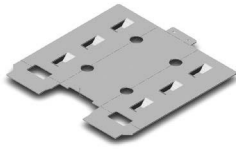
<b>Button with Slots</b>	<b>14-2</b>
Tools Needed	14-2
Creating the Base Block	14-3
Revolving the Body	14-4
Sketching Slot Profiles	14-5
Creating the Split Lines	14-7
Adding more fillets	14-9
Inserting the forming tool feature	14-9
Saving the forming tool	14-10
Questions for Review	14-12



**Designing Sheet Metal Parts – Mounting Tray 14-13**

Tools Needed	14-14
Starting with the Base Sketch	14-15
Creating an Edge Flange	14-16
Adding Cut features	14-17
Extruding a cut	14-17
Using the Unfold Command	14-18
Using the Fold Command	14-20
Inserting a Sheet Metal Forming Tool	14-23
Locating the Bridge Lance	14-25





Creating the Linear Pattern of the Bridge Lance	14-26
Mirroring the Body	14-27
Adding Chamfers	14-30
Switching to the Flat Pattern	14-31
Questions for Review	14-32

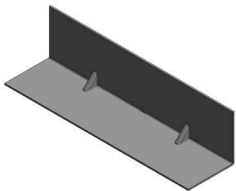
**Chapter 15 Sheet Metal Conversions 15-1**

**From IGES to SOLIDWORKS 15-2**



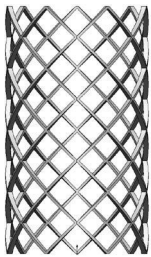
Tools Needed	15-2
Opening an IGES Document	15-3
Creating the Rips	15-4
Inserting the Sheet Metal Parameters	15-5
Adding Fillets	15-6
Switching to a Flat Pattern	15-7
Questions for Review	15-8

**Sheet Metal Gussets 15-9**



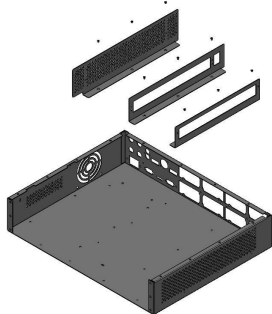
Opening a sheet metal document	15-9
Creating a gusset	15-9
Viewing the resulted gusset	15-11
Mirroring the gusset	15-12

**Flat Pattern Stent 15-13**



Tools Needed	15-14
Converting to Sheet Metal	15-16
Unfolding the Part	15-16
Adding the Sketch Pattern	15-17
Folding the Part	15-19
Creating a new Configuration	15-20
Adding Fillets	15-20
Switching to Flatten Mode	15-21
Questions for Review	15-22
Exercise: Stent Sample - Sheet Metal Approach	15-23

**Chapter 16 Working with Sheet Metal STEP Files 16-1**



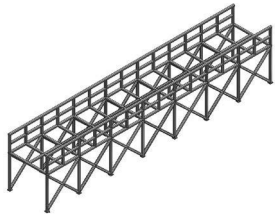
Tools Needed	16-2
Opening an Assembly Step File	16-3
Mating the components	16-4
Adding the Sheet Metal tool tab	16-7
Inserting Sheet Metal parameters	16-8
Viewing the Flat Pattern	16-9
Converting other components	16-9
Using the Hole Series	16-11

Using the Hole Wizard	16-13
Adding the Smart Fasteners	16-15
Creating an Exploded View	16-17



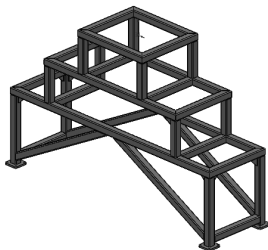
<b>Adding Parts to the Toolbox Library</b>	<b>16-18</b>
Starting the Toolbox Settings Utility	16-18
Activating Toolbox	16-21
Locating the new part	16-22
Viewing the new part	16-22
Adding a Part Number and Description	16-23

**Chapter 17 Advanced Weldments 17-1**



<b>Weldments Platform</b>	<b>17-2</b>
Tools Needed	17-2
Adding the weldments toolbar	17-3
Adding the structural members	17-4
Viewing the overlapped areas	17-8
Trimming the overlapped areas	17-9
Updating the cut list	17-12

**Using Weldments – Structural Members 17-14**



Enabling the Weldment Toolbar	17-14
Adding Structural Members	17-15
Setting the Corner Treatments	17-15
Adding Structural Members to Contiguous Groups	17-16
Adding Structural Members to the Parallel Groups	17-17
Trimming the Structural Members	17-19
Adding the foot pads	17-26
Adding the Gussets	17-27
Adding the Fillet Beads	17-29
Viewing the Weldment Cut List	17-31
Updating the Cut List	17-32
Creating a drawing	17-33

**Mold Tools Design Topics**

**Chapter 18 Creating a Core and Cavity 18-1**

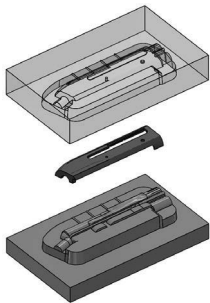


Linear Parting Lines	18-2
Tools Needed	18-2
Opening an existing Parasolid document	18-3
Creating the Parting Lines	18-4
Creating the Shut-Off Surfaces	18-5

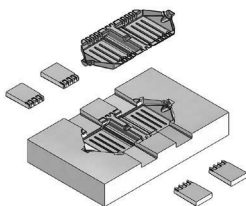
Creating the Parting Surfaces	18-6
Sketching the profile of the mold blocks	18-7
Creating the Tooling Split	18-8
Saving the bodies as part files	18-10
Separating the 2 blocks	18-11
Exercise: Linear Parting Lines	18-13
Questions for Review	18-19

**Chapter 19 Non-Planar Parting Lines 19-1**

<b>Mold-Tooling Design</b>	19-2
Tools Needed	19-2
Enabling the Mold Tools toolbar	19-3
Creating the Parting Lines	19-4
Creating the Shut-Off Surfaces	19-5
Creating the Parting Surfaces	19-6
Creating a Ruled Surface	19-7
Creating the patches	19-9
Knitting the surfaces	19-13
Trimming the bottom of the ruled surface	19-15
Creating the Tooling Split sketch	19-16
Separating the solid bodies	19-18
Making the body transparent	19-19

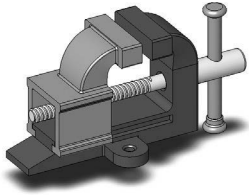


<b>Creating Slides and Cores</b>	19-21
Tools Needed	19-22
Opening a part document	19-23
Analyzing the undercuts	19-23
Analysis parameters explained	19-24
Scaling the part	19-25
Creating the parting lines	19-26
Creating the parting surfaces	19-27
Creating a new sketch	19-28
Creating the tooling split	19-29
Finalizing the block sizes	19-29
Renaming the bodies and assigning materials	19-32
Creating the front slide core	19-32
Creating the back slide core	19-34
Creating an exploded view	19-35



**Chapter 20 Top-Down Assembly – Part 1 20-1**

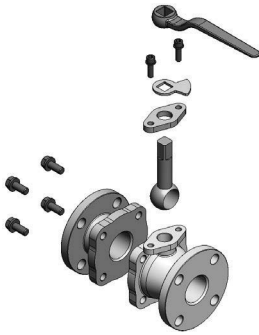
<b>Miniature Vise</b>	20-2
Tools Needed	20-2
Creating the Base part	20-3



Adding the side flanges	20-5
Creating an offset distance plane	20-7
Creating the 3D Guide Curves	20-9
Creating the fixed jaw clamp	20-11
Creating a new component: The slide jaw	20-14
Using the offset entities command	20-15
Creating the Guide Curve to connect the two sketches	20-20
Creating the clamp block	20-22
Extruding the clamp block	20-23
Creating the Internal threads	20-26
Creating a Section View	20-29
Questions for Review	20-32

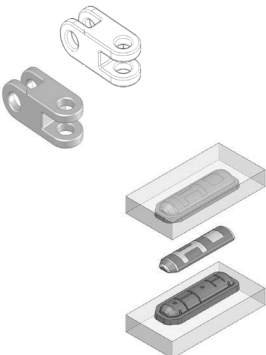
**Chapter 21 Top-Down Assembly – Part 2 21-1**

<b>Water Control Valve</b>	21-2
Tools Needed	21-2
Starting a New Assembly Template	21-3
Creating the 1st Component	21-4
Adding the Inlet Flange	21-5
Adding the Mounting Holes	21-6
Adding Chamfers and Fillets	21-8
Saving as Virtual Component	21-10
Creating the 2nd Component	21-10
Creating the Transition Body	21-12
Adding another mounting Flange	21-13
Adding an Offset-Distance plane	21-14
Exiting the Edit Component Mode	21-20
Applying dimension changes	21-20
Viewing the External Reference Symbols	21-22
Inserting other components	21-23
Questions for Review	21-25



**Chapter 22 External References & Repair Errors 22-1**

External Reference Symbols	22-2
Understanding & Removing External References	22-3
Removing External References	22-3
Understanding the External Symbols	22-4
Repairing the Sketches	22-5
Rebuilding the model	22-7
Questions for Review	22-8
Understanding and Repairing Part Errors	22-9
Repair Errors & External References	22-16



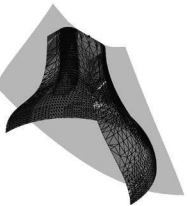
**Level 4: Final Exam** 22-24

**Chapter 23 Using Appearances** 23-1

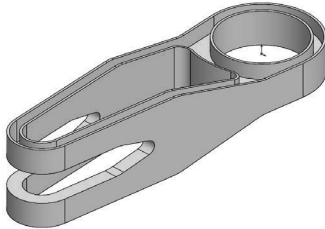
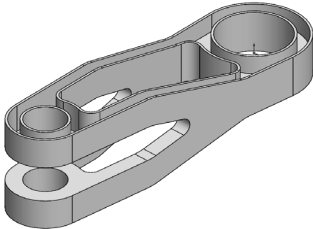
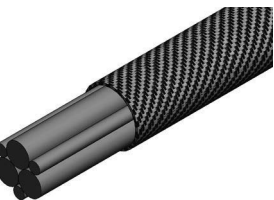


- Modeling diamond knurls 23-1
- Applying the knurl appearance 23-5
- Applying the wire mesh appearance 23-8
- Flatten surfaces 23-11
- Exercise: Flattening a shoe sole 23-15

**Certification Practice for the CSWP Mechanical Design Exam** 24-1



- Challenge I: Part Modeling & Modifications 24-2
- Challenge II: Part Modifications & Configurations 24-27
- Challenge III: Bottom Up Assembly & Mates 24-48



**Glossary, Index, and SOLIDWORKS 2020 Quick-Guide**

Quick Reference Guide to SOLIDWORKS 2020 Command Icons and Toolbars.