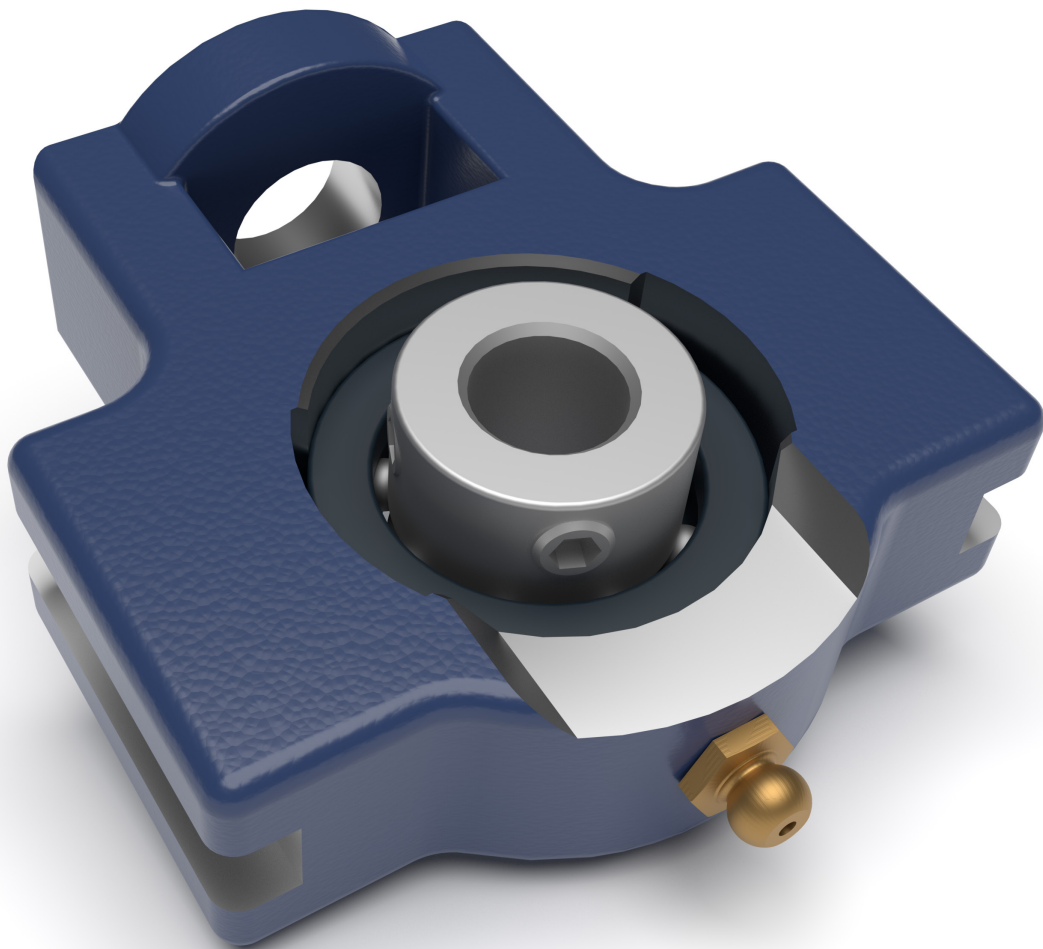


Michael J. Rider, Ph.D.

# Designing with Creo® Parametric 7.0



Visit the following websites to learn more about this book:



[amazon.com](https://www.amazon.com)

[Google books](https://books.google.com)

[BARNES & NOBLE](https://www.barnesandnoble.com)

# CONTENTS

Preface xi

## Chapter 1

### COMPUTER-AIDED DESIGN 1

Objectives 1  
History of Computer-Aided Design 1  
Creo Parametric—Designing Without Barriers 2  
Creo Parametric—Getting Started 5  
Recovering from a Program Crash 12  
Review Questions 15

## Chapter 2

### INTRODUCTION 17

Objectives 17  
Introduction 17  
Design Process 17  
    Step 1—Identifying the Problem 18  
    Step 2—Brainstorming Ideas 18  
    Step 3—Evaluating the Ideas, then Selecting One 19  
    Step 4—Modeling the Solution 19  
    Step 5—Working Drawing and Production 19  
Design a New Product, an Example 20  
    Step 1—Identifying the Problem 20  
    Step 2—Brainstorming Ideas 21  
    Step 3—Evaluating the Ideas, then Selecting One 23  
    Criteria 23  
    Final Preliminary Design 25  
    Next Step 26  
Review Questions 26

## Chapter 3

### SKETCHER 27

Objectives 27  
Sketcher Explored 27  
    Entering Sketcher Directly from Creo Parametric 28  
    Entering Sketcher from Part Mode within Creo Parametric 29  
Sketcher Tools Explained 29  
    Datums 29  
    Sketching Tools 30  
    Editing 37  
    Constraint 39  
    Dimension 41  
    Inspect 44  
    Save Sketch 44  
    Close Sketcher from Part Mode 44  
    Set up Sketcher from Part Mode 45  
    Sketcher Graphics Toolbar 45  
Sketcher Practice 47  
Sketcher Exercise 58

Using Creo Parametric to Sketch the Jig, Design\_1a 59  
Using Creo Parametric to Design a Jig, Design\_1b 63  
Using Creo Parametric to Design a Jig, Design\_1c 66

Review Questions 68  
Sketcher Problems 69

## Chapter 4

### EXTRUSIONS 75

Objectives 75  
Extrusions Explored 75  
Extrusions Practice 81  
Extrusions Exercise 92  
Review Questions 104  
Extrusions Problems 105

## Chapter 5

### REVOLVES 115

Objectives 115  
Revolves Explored 115  
    Symmetrical Features in Designs 115  
    Hole Options 120  
    Hole Placement 121  
Revolves Practice 122  
Revolves Exercise 137  
Review Questions 148  
Revolves Problems 149

## Chapter 6

### PATTERNS 155

Objectives 155  
Patterns Explored 155  
Patterns Practice (Linear) 163  
Patterns Practice (Axial) 170  
Patterns Exercise 178  
Review Questions 191  
Patterns Problems 192

## Chapter 7

### DIMENSIONING 197

Objectives 197  
Do's and Don'ts of Dimensioning 197  
    Background 197  
    Part Size and Shape 197  
    Learn to Dimension Properly 198

Fractional and Decimal Dimensions	200
Standard Sizes Preferred	203
Dimensioning Angles	203
Dimensioning Arcs	204
Fillet and Rounds	205
Finish Marks	205
Dimensions and Part Views	205
Contour Dimensioning	206
Geometric Shapes	207
Dimensioning Prisms	208
Dimensioning Cylinders	209
Dimensioning Holes	210
Dimensioning Round-End Shapes	211
Dimensioning Tapers	212
Dimensioning Threads	212
Dimensioning Chamfers	213
Shaft Centers	213
Dimensioning Keyways	214
Location Dimensions	214
Modified Purchased Parts	217
Mating Dimensions	217
Notes	218
Dimensioning for Numerical Control	219
Checklist for Dimensioning	219
Creating an A-size Format Sheet	222
Creating A-size Templates	232
Template with Three Orthographic Views	232
Template with Two Orthographic Views	239
Template with One 3D Projection View	241
Review Questions	244
<b>Chapter 8</b>	
<b>ENGINEERING DRAWINGS</b>	<b>245</b>
Objectives	245
Engineering Drawings Explored	245
Engineering Drawings Practice	252
Sectioned View	259
Auxiliary Views	265
Engineering Drawings Exercise	272
Review Questions	279
Engineering Drawings Problems	280
<b>Chapter 9</b>	
<b>ASSEMBLIES</b>	<b>287</b>
Objectives	287
Assemblies Explored	287
User-Defined Constraints	289
Predefined Constraints	291
Using Extra Constraints	292
Assembly Practice	293
Assembly Exercise	307
Review Questions	333
Assembly Problems	334

<b>Chapter 10</b>	
<b>ASSEMBLY DRAWINGS</b>	<b>339</b>
Objectives	339
Assembly Drawings Explored	339
Assembly Drawings Practice	343
Assembly Drawings Exercise	352
Review Questions	365
Assembly Drawings Problems	366

<b>Chapter 11</b>	
<b>RELATIONS AND FAMILY TABLES</b>	<b>369</b>
Objectives	369
Relations and Family Tables Explored	369
Relations Practice	373
Relations and Pattern Practice	377
Relations and Family Tables Practice	383
Relations and Family Tables Exercise	392
Review Questions	403
Relations and Family Tables Problems	404

<b>Chapter 12</b>	
<b>TOLERANCING AND GD&amp;T</b>	<b>407</b>
Objectives	407
Tolerancing and GD&T Explored	407
Basic Hole System	409
Coordinate Tolerancing	412
Geometric Tolerances	413
Tolerancing and GD&T Practice	418
Tolerancing and GD&T Exercise	433
Review Questions	441
Tolerancing and GD&T Problems	442

<b>Chapter 13</b>	
<b>CREO SIMULATE AND FEA</b>	<b>449</b>
Objectives	449
Creo Simulate and FEA Explored	449
Simulate and FEA Practice	451
Simulate and FEA Exercise	469
Review Questions	483
Simulate and FEA Problems	484

<b>Appendix A</b>	
<b>PARAMETERS FOR DRAWINGS</b>	<b>489</b>

<b>Appendix B</b>	
<b>DRILL AND TAP CHART</b>	<b>493</b>

<b>Appendix C</b>	
<b>SURFACE ROUGHNESS CHART</b>	<b>495</b>

Appendix D		Appendix K	
<b>CLEVIS PIN SIZES</b>	<b>497</b>	<b>RETAINING RING SIZES</b>	<b>511</b>
Appendix E		Appendix L	
<b>NUMBER AND LETTER DRILL SIZES</b>	<b>499</b>	<b>BASIC HOLE TOLERANCE</b>	<b>513</b>
Appendix F		Appendix M	
<b>SQUARE AND FLAT KEY SIZES</b>	<b>501</b>	<b>BASIC SHAFT TOLERANCE</b>	<b>515</b>
Appendix G		Appendix N	
<b>SCREW SIZES</b>	<b>503</b>	<b>TOLERANCE ZONES</b>	<b>517</b>
Appendix H		Appendix O	
<b>NUT SIZES</b>	<b>505</b>	<b>INTERNATIONAL TOLERANCE</b>	
Appendix I		<b>GRADES</b>	<b>519</b>
<b>SETSCREW SIZES</b>	<b>507</b>	References	521
Appendix J		Index	523
<b>WASHER SIZES</b>	<b>509</b>		