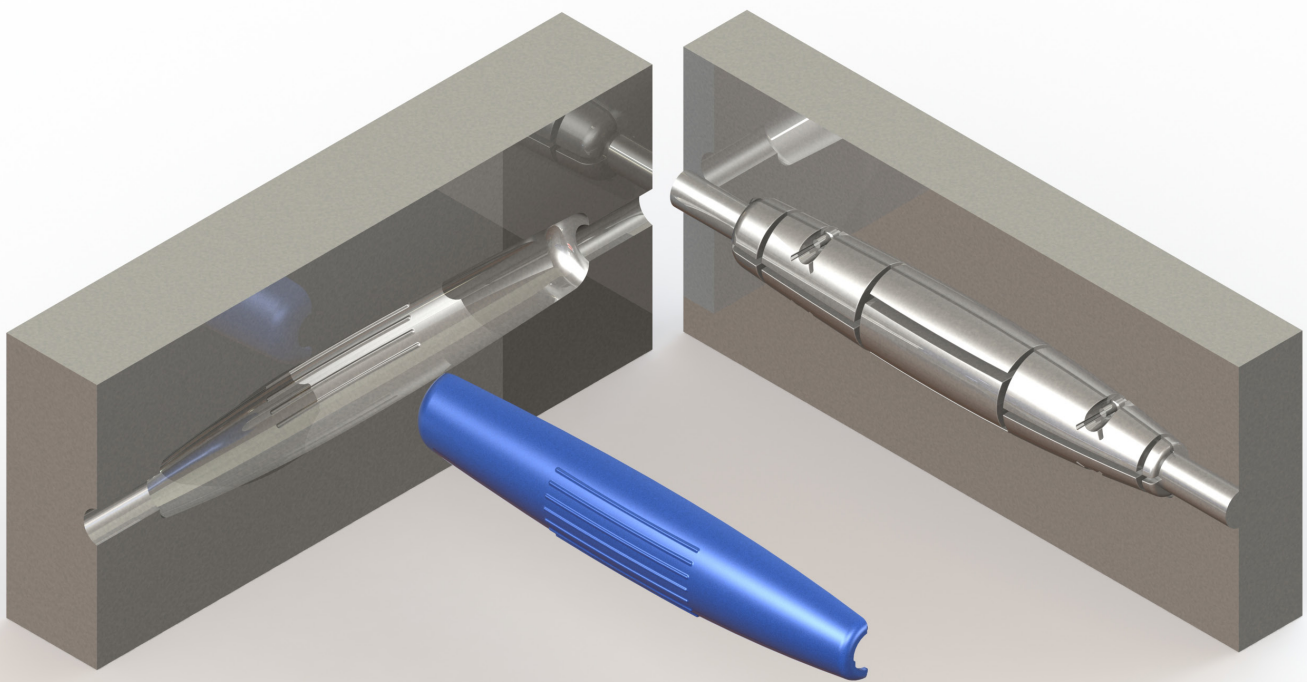


Certified SOLIDWORKS[®] Professional Advanced Preparation Material

Sheet Metal, Weldments, Surfacing,
Mold Making and Drawing Tools

SOLIDWORKS[®] 2021



Paul Tran CSWE, CSWI

Visit the following websites to learn more about this book:



[amazon.com](https://www.amazon.com)

[Google books](https://books.google.com)

[BARNES & NOBLE](https://www.barnesandnoble.com)

Table of Contents

CSWPA – Drawing Tools

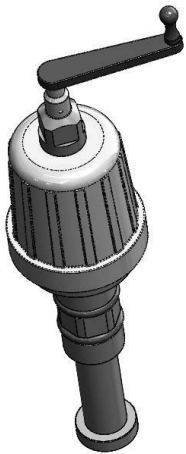
Chapter 1: Advanced Drawing Tools 1-1



Challenge 1: Tank 1-3

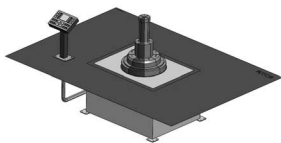
Open the part document: Tank	1-3
Transferring to a drawing	1-3
Changing the paper size	1-4
Adding the drawing view	1-5
Creating a section view	1-6
Measuring the surface area	1-7
Creating an aligned section view	1-7
Measuring the surface area	1-9

Challenge 2: Piston Assembly 1-10



Open the assembly document: Piston Assembly	1-10
Creating a reference sketch	1-11
Modifying the view angle	1-12
Saving a new named-view	1-14
Making a drawing from assembly	1-15
Adding the first drawing view	1-16
Creating the projected drawing views	1-17
Adding reference lines	1-18
Converting an entity	1-19
Adding a reference dimension	1-19
Adding a top drawing view	1-20
Locking a view focus	1-21
Adding an angular dimension	1-23

Challenge 3: Radial Stretcher 1-24

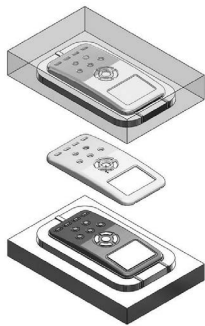


Open the assembly document: Radial Stretcher	1-24
Transferring to a drawing	1-24
Adding drawing views from the view palette	1-25
Breaking the view alignment	1-26
Adding balloons	1-27

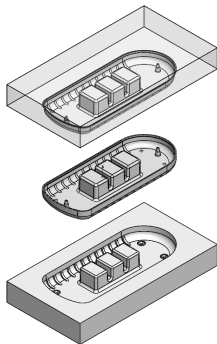
Adding a bill of materials	1-28
Changing custom properties	1-29
Adding a new column	1-30
Optional	1-32

CSWPA – Mold Making

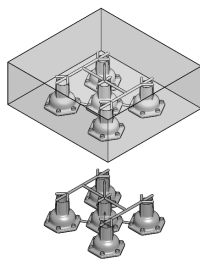
Chapter 2: Advanced Mold Making 2-1



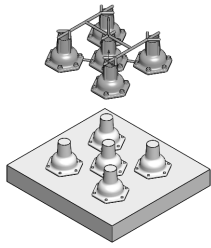
Challenge 1: Interlock Surface	2-2
Open the document: Interlock Surface	2-3
Enabling the mold tools	2-3
Selecting the parting line	2-4
Creating the shut-off surfaces	2-5
Creating the parting surfaces	2-6
Making a new plane	2-7
Sketching the mold profile	2-8
Performing a tooling split	2-9
Separating the solid bodies	2-10
Assigning material	2-11
Calculating the mass	2-11



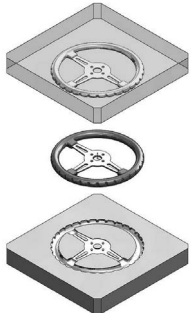
Challenge 2: Parting Lines Creation	2-13
Open the document: Parting Line Creation	2-14
Creating the parting line	2-14
Creating the shut-off surfaces	2-15
Creating the Parting surfaces	2-16
Sketching the mold block profile	2-17
Inserting a tooling split	2-18
Separating the block from the part	2-19
Assigning material	2-20
Calculating the mass	2-20



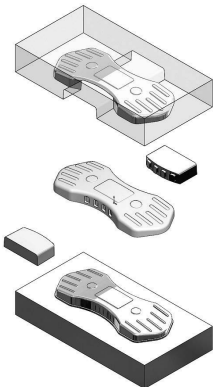
Challenge 3: Runners & Sprue	2-22
Open the document: Runners & Sprue	2-23
Creating the shut-off surfaces	2-24
Creating the parting surfaces	2-25
Sketching the shape of the mold profile	2-26
Inserting a tooling split	2-27
Finalizing the mold block sketch	2-28
Extruding the lower mold block	2-29



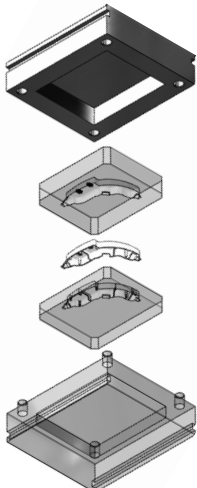
Converting a sketch	2-30
Extruding the upper mold block	2-31
Moving the cavity block	2-32
Measuring the distance	2-32
Copying the plastic part	2-33
Subtracting the solid bodies	2-33
Applying the shrink rate	2-34
Calculating the mass	2-34



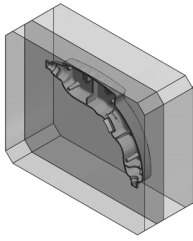
Challenge 4: Shut-Off Surface Creation	2-36
Open the document: Steering Wheel	2-37
Creating a split line	2-37
Creating the parting lines	2-39
Creating the shut-off surfaces	2-40
Measuring the surface area	2-41
Creating the parting surfaces	2-42
Inserting a tooling split	2-43
Adding chamfers	2-44
Creating an exploded view	2-45



Challenge 5: Undercut Analysis	2-46
Open the document: Undercut Analysis	2-47
Performing an undercut analysis	2-47
Creating the parting lines	2-48
Creating the shut-off surfaces	2-49
Creating the parting surfaces	2-50
Inserting a tooling split	2-51
Adding the 1 st slide core	2-52
Adding the 2 nd slide core	2-53
Assigning material	2-54
Calculating the mass	2-54



Challenge 6: Virtual Part Creation	2-56
Open the document: Virtual part Creation	2-57
Hiding components	2-57
Inserting a new part	2-58
Working in the part level	2-59
Inserting the 2 nd part	2-60
Moving the solid bodies	2-61
Creating an intersect feature	2-62
Creating a combine-subtract feature	2-63
Working in the assembly level	2-64
Assigning material	2-65



Calculating the mass

2-65

CSWPA – Weldments

Chapter 3: Advanced Weldments

3-1

Challenge 1: Creating the Weldments profile

3-3

Starting a new part document

3-3

Enabling the Weldments tab

3-3

Sketching the first weldment profile

3-4

Creating the second weldment profile

3-5

Sketching the profile

3-5

Showing the weldment profiles folder

3-6

Creating a new weldment part

3-7

Adding structural members

3-8

Applying material

3-9

Calculating the mass

3-9

Changing the structural members

3-10

Calculating the mass

3-11

Challenge 2: Weldment Frame 3.sldprt

3-12

Open the document: Weldment Frame 3

3-12

Adding structural members

3-12

Creating the parallel group

3-14

Trimming the parallel group

3-15

Applying material

3-17

Calculating the mass

3-17

Creating the Upper Braces

3-18

Trimming the first Upper Braces

3-18

Updating the Cut list

3-20

Creating the Lower Braces

3-21

Trimming the Lower Braces

3-21

Adding End Caps

3-24

Calculating the final mass

3-25

Challenge 3: Weldment Frame 4.sldprt

3-26

Open the document: Weldment Frame 4

3-26

Creating a 3D sketch

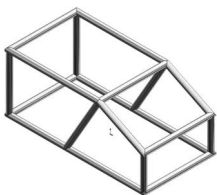
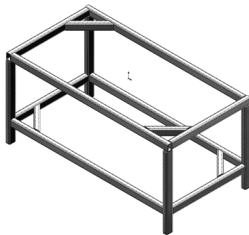
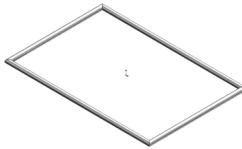
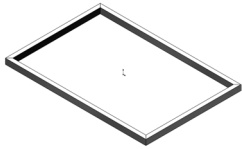
3-26

Adding structural members

3-31

Creating the parallel group

3-32



Trimming the tubes 3-33

Challenge 4: Weldment Frame 5.sldprt 3-37

Open the document: Weldment Frame 5 3-37

Assigning material 3-37

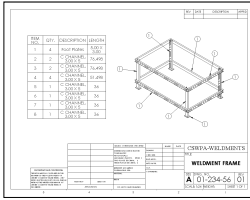
Modifying the properties 3-38

Transferring to a drawing 3-39

Adding a drawing view 3-39

Inserting the weldment cut list 3-40

Adding balloons 3-41



CSWPA – Sheet Metal

Chapter 4: Advanced Sheet Metal 4-1

Challenge 1: Converting to Sheet Metal 4-3

Opening the document: Convert to SM 4-3

Enabling the sheet metal tab 4-3

Making a copy of the solid model 4-3

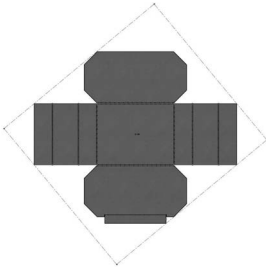
Converting to sheet metal 4-5

Calculating the mass 4-6

Measuring the flat pattern 4-7

Creating a Hem 4-8

Calculating the mass 4-10



Challenge 2: Sheet Metal Cut List 4-11

Open the document: SM Cut List 4-11

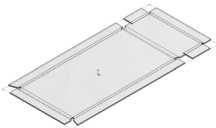
Modifying the first bend radius 4-11

Measuring the flat length 4-12

Modifying the second bend radius 4-13

Measuring the flat length 4-13

Finding the Bounding Box Area 4-14



Challenge 3: Sheet Metal Part 4-15

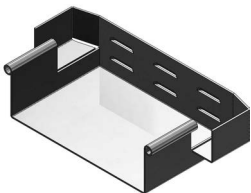
Open the document: SM Part 4-15

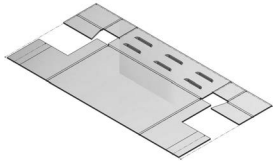
Creating the Edge Flanges 4-15

Closing the corners 4-16

Creating a cutout 4-17

Adding a Miter Flange 4-18





Mirroring the features	4-22
Calculating the mass	4-23
Changing the K-Factor value	4-24
Measuring the flat length	4-24
Adding hems	4-25
Adding a form feature	4-26
Creating a linear pattern	4-27
Calculating the mass	4-27

CSWPA – Surfacing

Chapter 5: Advanced Surfacing

5-1

Challenge 1: Surface patch

5-3

Open the document: Inlet-Outlet Patches	5-3
Enabling the surfaces tab	5-3
Patching the first opening	5-4
Measuring the surface area	5-5
Deleting and patching a hole	5-5
Knitting the surfaces	5-6
Creating a section view	5-6
Calculating the mass	5-7

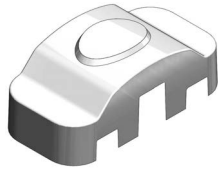


Challenge 2: Surfaces & Sketch Picture

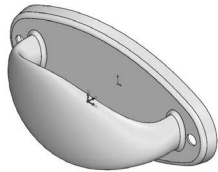
5-8

Open the document: Surfaces_ Sketch Picture	5-8
Examining the sketch pictures	5-8
Creating the 1 st loft profile	5-9
Fully defining a sketch	5-9
Creating the 2 nd loft profile	5-10
Converting the entities	5-10
Making the guide curve	5-11
Adjusting the spline	5-11
Creating a lofted surface	5-12
Measuring the surface area	5-13
Mirroring the surface bodies	5-14
Knitting the surfaces	5-15
Combining the solid bodies	5-15
Assigning material	5-16
Calculating the mass	5-16





Challenge 3: Ruled Surface	5-17
Open the document: Ruled Surface	5-17
Creating a ruled surface	5-17
Using the taper to vector option	5-17
Trimming the surfaces	5-18
Measuring the surface area	5-19
Creating a section view	5-19



Challenge 4: Projected Curves	5-20
Open the document: Project Curve	5-20
Creating a projected curve	5-20
Sketching the sweep profile	5-21
Creating a swept feature	5-22
Using path and guide curves	5-22
Trimming the surfaces	5-23
Knitting the surfaces	5-24
Adding fillets	5-24
Adding thickness	5-25
Calculating the mass	5-25



Challenge 5: Surface Split	5-26
Open the document: Surface Split	5-26
Creating a split line	5-26
Using the projection type	5-26
Creating the 1 st offset surface	5-27
Creating the 2 nd offset surface	5-27
Making the 1 st lofted cut feature	5-28
Making the 2 nd lofted cut feature	5-28
Adding fillets	5-29
Shelling the model	5-30
Calculating the final mass	5-30



Challenge 6: Boundary Surface	5-31
Open the document: Boundary Surface	5-31
Creating a lofted surface	5-31
Measuring the surface area	5-32
Mirroring a surface body	5-32
Mirroring a mirrored surface body	5-33
Creating a trimmed sketch	5-33
Fully defining the sketch	5-33
Trimming the surface bodies	5-34
Using standard trim	5-34

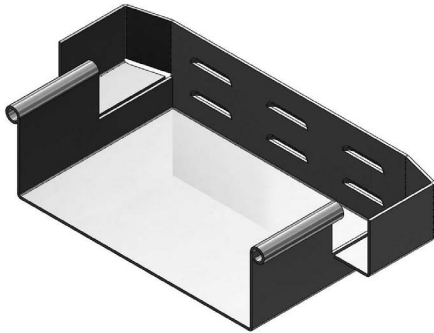
Measuring the total area

5-34

Glossary and Index

SOLIDWORKS 2021 Quick-Guide:

Quick Reference Guide to SOLIDWORKS 2021 Command Icons and Toolbars.



REV	DATE	DESCRIPTION	APP'D
1			

ITEM	QTY	DESCRIPTION	LENGTH
1	4	Foot Plates	570 X 358
2	2	C CHANNEL	500 X 50 X 76.498
3	2	C CHANNEL	500 X 50 X 76.498
4	4	C CHANNEL	500 X 50 X 81.498
5	1	C CHANNEL	500 X 50 X 36
6	1	C CHANNEL	500 X 50 X 36
7	1	C CHANNEL	500 X 50 X 36
8	1	C CHANNEL	500 X 50 X 36

DATE	DESCRIPTION	SCALE	DATE

CSWPA-WELDMENTS

WELDMENT FRAME

REV: 01-234-56 01

SCALE: 1:1 SHEET 1 OF 1

