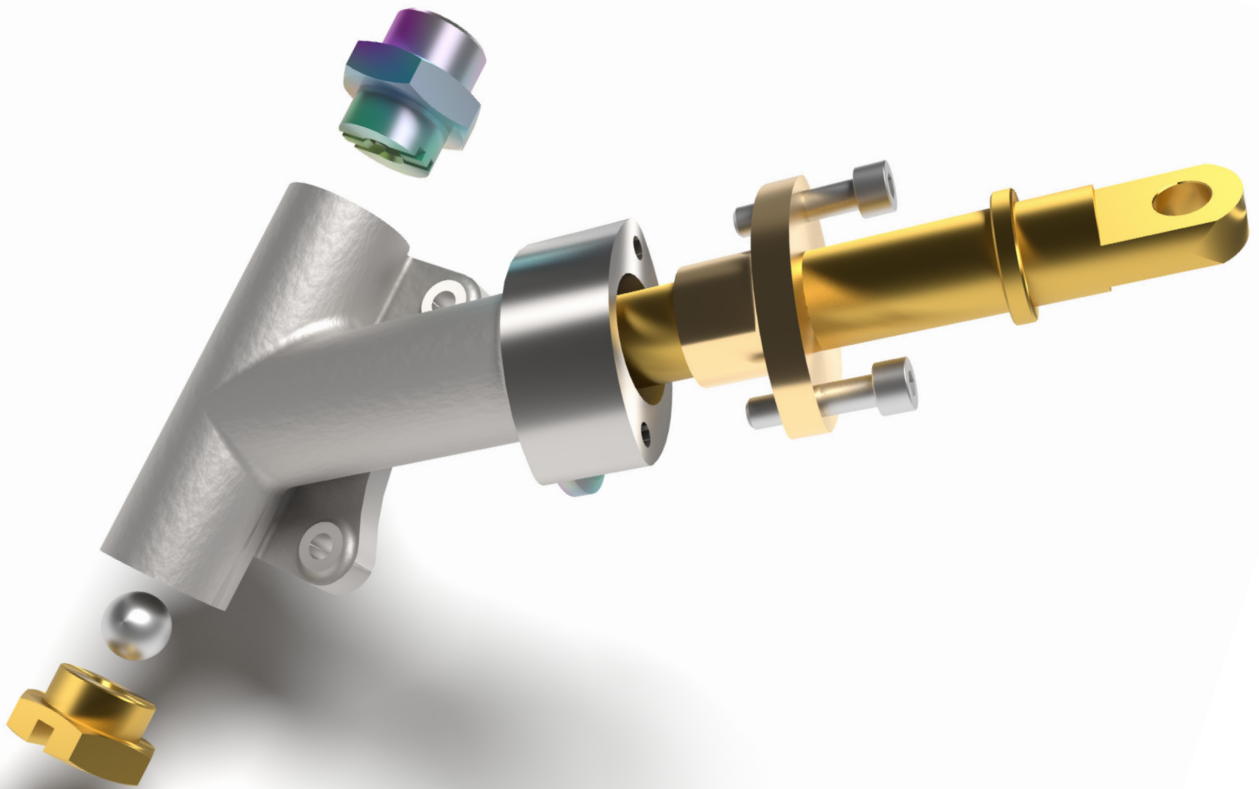


Autodesk® **Inventor® 2022 Essentials Plus**

Shawna Lockhart, Daniel T. Banach & Travis Jones



Visit the following websites to learn more about this book:



[amazon.com](https://www.amazon.com)

[Google books](https://books.google.com)

[BARNES & NOBLE](https://www.barnesandnoble.com)

CONTENTS

1 Getting Started

1

Introduction.....	1	iFeature (.ide).....	11
Objectives.....	1	Save File Options	11
Getting Started with Autodesk Inventor	2	Save	11
User Interface	3	Save All.....	12
Application Menu.....	3	Save As.....	12
Quick Access Toolbar	3	Save Copy As	12
Tabs	3	Save Copy As Template.....	12
Panels	3	Pack and Go	12
Commands	3	Save Reminder	12
Information Toolbar	3	Application Options.....	12
ViewCube.....	3	General	13
Navigation Bar	4	Save	13
Documents Menu.....	4	File	13
Capacity Meter	4	Colors.....	13
Status Bar	4	Display	13
Document Tabs	4	Hardware	14
Browser.....	4	Prompts.....	14
Graphics Window/Canvas	4	Drawing.....	14
File Tab	5	Notebook	14
Recent Documents	5	Sketch	14
Open Documents.....	5	Part.....	14
Display	5	iFeature	14
Order to List Files.....	5	Assembly	14
Pin to Menu	5	Content Center.....	14
Preview Image	5	Exercise 1-1: User Interface	14
Ribbon	6	Command Entry	17
Quick Access Toolbar	7	Tooltips.....	17
Open Files	7	Marking Menus and Context (Overflow) Menus..	18
Opening Multiple Documents	8	Autodesk Inventor Shortcut Keys	18
Document Tabs.....	8	Repeat Last Command.....	18
New Files.....	9	Undo and Redo	19
File Information.....	10	Help System	19
File Types	10	Projects in Autodesk Inventor	19
Part (.ipt)	10	Project Setup.....	20
Assembly (.iam)	10	Project File Search Options	20
Presentation (.ipn).....	10	Creating Projects	20
Sheet Metal (.ipt).....	11	What Type of Project Are You Creating?	22
Drawing (.dwg and .idw)	11	New Single-User Project.....	22
Project (.ipj).....	11	New Vault Project.....	22
		Creating a New Single-User Project	22
		Autodesk Vault.....	24
		Exercise 1-2: Projects.....	24
		Changing your Viewpoint.....	27

Home (Isometric) View	27
Navigation Bar	27
ViewCube.....	29
Dynamically Rotate Viewpoint Shortcuts	30
Exercise 1-3: Viewing a Model.....	30

2 Sketching, Constraining, and Dimensioning **35**

Introduction.....	35
Objectives.....	35
Part and Sketch Application Options	36
Part Options	36
Sketch Options	37
Units	38
Templates	39
Creating a Part File.....	40
Creating a Part File from a Specified Template ...	41
Sketches and Origin (Default) Planes.....	41
Origin 3D Indicator	42
New Sketch.....	42
Sketching the 2D Outline of the Part	44
Sketching Overview	44
Sketch Commands	44
Using the Sketch Commands	44
Dimension Input.....	45
Line Command	45
Object Tracking – Inferred Points	46
Automatic Constraints.....	47
Scrubbing	47
Deleting Objects	47
Common Sketch Commands.....	48
Selecting Objects	49
Exercise 2-1: Creating a Sketch with Lines	50
Exercise 2-2: Creating a Sketch with Tangencies..	52
Constraining A Sketch	53
Constrain to the Origin Point.....	53
Constraint Types	54
Adding Constraints	55
Showing Constraints	55
Modifying Constraint Size	55
Deleting Constraints	56
Hiding Constraints	56
Construction Geometry.....	57

Number of Required Constraints or Dimensions ...	58
Degrees of Freedom	58
Dragging a Sketch	58
Exercise 2-3: Adding and Displaying Constraints..	59
Adding Dimensions Manually	63
Scale Sketch	63
General Dimensioning	63
Dimensioning Lines	64
Dimensioning Angles.....	64
Dimensioning Arcs and Circles	64
Dimensioning to a Tangent of an Arc or Circle..	64
Entering and Editing a Dimension Value ...	65
Fractions	66
Repositioning a Dimension	66
Fully Constrained Sketch	66
Over Constrained Sketch.....	67
Relax Mode	67
Driven Dimension.....	68
Exercise 2-4: Constraining and Dimensioning a Sketch.....	69
Measure Command.....	72
Region Properties.....	75
Inserting an AutoCAD File.....	76
Inserting 2D AutoCAD Data into a Sketch ..	76
Insert AutoCAD File with Associativity	78
Open Other File Types.....	78
Exercise 2-5: Inserting AutoCAD Data	79
Applying Your Skills.....	83
Skills Exercise 2-1	83
Skills Exercise 2-2.....	83

3 Creating & Editing Sketched Features **85**

Introduction.....	85
Objectives.....	85
Features	86
Consumed and Unconsumed Sketches.....	86
Understanding the Browser.....	87
Switching Environments	88
3D Modeling Commands.....	88
Direct Manipulation.....	88
Mini-Toolbars.....	89
Property(ies) Panels.....	90

Extrude a Sketch	90	Chamfers	131
Input Geometry.....	91	Methods	132
Extents	92	Edge Chain	133
Advanced Properties	94	Setback.....	133
Exercise 3-1: Extruding a Sketch.....	94	Preserve All Features	134
Linear Diameter Dimensions	96	Create Partial Chamfer	134
Centerline.....	96	Exercise 4-1: Creating Fillets and Chamfers	135
Normal Line.....	97	Holes	138
Revolve a Sketch.....	97	Creating Hole Features	138
Input Geometry	98	Holes Dialog Box	139
Exercise 3-2: Revolving a Sketch	100	Advanced Settings	141
Primitive Shapes/Features.....	102	Editing Hole Features.....	141
Secondary 2D Sketched Features.....	104	Exercise 4-2: Creating Holes	142
Create a new 2D Sketch	104	Shelling.....	146
Select Other-Face Cycling.....	105	Direction.....	147
Slice Graphics	105	Remove Faces	147
Exercise 3-3: Sketch Features.....	106	Automatic Face Chain	147
Editing a Feature and Sketch	108	Solids	147
Edit Feature Command	108	Thickness.....	147
Editing a Feature's Sketch	109	Unique Face Thickness	148
Renaming Features and Sketches.....	109	Exercise 4-3: Shelling a Part	148
Deleting a Feature.....	110	Work Features	150
Failed Features	110	Creating a Work Axis	150
Exercise 3-4: Editing Features and Sketches	110	Exercise 4-4: Creating Work Axes	151
Projecting Geometry.....	112	Creating Work Points	153
Projecting Edges.....	112	Creating Work Planes	155
Exercise 3-5: Projecting Geometry	114	UCS—User Coordinate System.....	157
Part Material, Properties and Appearance	116	Feature Visibility	159
Part Material.....	116	Editing the UCS	159
Appearance	117	Exercise 4-5: Creating Work Planes and a UCS ...	160
Additional Appearance Commands	117	Exercise 4-6: Creating Holes Through Cylinders...	164
Skills Exercise 3-1	120	Patterns	167
Skills Exercise 3-2.....	121	Rectangular Patterns.....	167
Skills Exercise 3-3.....	122	Exercise 4-7: Creating a Rectangular Pattern ...	170
4 Creating Placed Features	125	Circular Patterns.....	171
Introduction.....	125	Exercise 4-8: Creating Circular Pattern	174
Objectives	125	Linear Patterns—Pattern along a Path	176
Fillets	126	Exercise 4-9: Creating a Pattern Along a Nonlinear Path	176
Edge Fillet.....	127	3D Printing – Additive Manufacturing	178
Face Fillet.....	129	Applying Your Skills.....	180
Full Round Fillet	130	Skills Exercise 4-1	180
		Skills Exercise 4-2	181

5 Creating & Editing Drawing Views	183
Introduction.....	183
Objectives.....	183
Drawing Options.....	184
Creating a Drawing.....	185
Drawing Sheet Preparation	186
Border	187
Title Block	188
Edit Property Fields Dialog Box.....	189
Save Drawing to a Template	189
Creating Drawing Views.....	190
Creating a Base View.....	190
Creating Projected Views.....	192
Moving Drawing Views.....	193
Drawing Zone Identifiers.....	193
Exercise 5-1: Creating a Multiview Drawing	194
Creating Auxiliary Views.....	197
Creating Section Views.....	198
Creating a Detail View	202
Exercise 5-2: Creating Auxiliary, Section, and Detail Views	204
Creating Break Views	206
Exercise 5-3: Creating Break View	208
Editing Drawing Views	209
Editing Drawing View Properties.....	209
Deleting Drawing Views	210
Break and Align Views	210
Replace Model Reference	211
Exercise 5-4: Editing Drawing Views	212
Annotations.....	214
Drawing Standards and Styles	214
Centerlines and Center Marks	217
Automated Centerlines for Drawing Views	219
Exercise 5-5: Adding Centerlines	220
Adding Dimensions to a Drawing View	223
Retrieving Model Dimensions	223
Selecting Dimensions – Additional Options	225
Auto Arrange Dimensions.....	226
Moving and Centering Dimension Text.....	226
Editing a Model Dimension's Value in a Drawing.....	226
Creating General Dimensions	227
Exercise 5-6: Adding Dimensions.....	229
Creating Baseline Dimensions	233

Creating Chain Dimensions.....	236
Exercise 5-7: Creating Baseline & Chain Dimensions	238
Creating Ordinate Dimensions	240
Adding Text and Additional Symbols	242
Text and Leader Text.....	242
Annotation Symbols	243
Hole and Thread Notes.....	244
Exercise 5-8: Adding Annotations	246
Creating a Hole Table	249
Exercise 5-9: Creating Hole Tables	251
Shortcut for Opening Referenced Files	254
Opening a Model File from a Drawing	254
Opening a Drawing from a Model File	255
Create a 3D PDF	255
3D Annotations / Model-Based Definition (MBD)	257
Creating a 3D Annotation.....	257
Tolerance Advisor	258
Controlling Visibility of Annotations.....	258
Retrieving 3D Annotations in a Drawing	259
Applying Your Skills.....	260
Skills Exercise 5-1	260
Skills Exercise 5-2.....	261

6 Creating & Documenting Assemblies 263

Introduction.....	263
Objectives.....	263
Assembly Options.....	264
Creating Assemblies.....	264
Placing Components	266
Placing Components from Another CAD System	268
Creating a Component in an Assembly	270
The Assembly Browser	271
Occurrences	271
The Assembly Capacity Meter.....	272
Editing a Component in Place	272
Opening a Component in an Assembly.....	273
Grounded Component.....	274
Degrees of Freedom (DOF)	274
Adding Assembly Constraints.....	275
Assembly Constraint Command	275
Constraint Limits	277
Assembly Constraint Examples	277
Motion Constraints	280

Transitional Constraint.....	281	Capture Camera Viewpoint.....	324
Constraint Set Constraint	282	Play the Animation	325
Selecting Geometry and the Select Other Command	282	Create a New Storyboard	325
Applying an Assembly Constraint	283	Publish a Video from a Storyboard	325
ALT + Drag Constraining Technique.....	283	Snapshot View	326
Moving and Rotating Components	283	Create a Drawing from a Snapshot View	327
Free Move	283	Publish a Raster Image from a Snapshot View ..	328
Free Rotate.....	284	Exercise 6-7: Creating a Presentation Storyboard ..	329
Editing Assembly Constraints	285	Creating Drawing Views from Assemblies	
Identify under-constrained components	286	& Presentations	334
Exercise 6-1: Assembling Parts	288	Bill of Material (BOM)	334
Assembly Joints.....	293	Sorting Items in the BOM.....	335
Creating an Assembly Joint.....	294	Renumbering Items in the BOM	336
Tips for using the joint command	296	Adding Columns to the BOM.....	336
Exercise 6-2: Assembly Joints	296	Changing the View Options of the BOM.....	336
Additional Assembly Commands.....	298	Opening a Part from the BOM Editor	337
Browser Views.....	298	Exercise 6-8: Editing a Bill of Material (BOM)....	337
Other Half.....	299	Creating Balloons	340
Constraint Tooltip	300	Placing Individual Balloons.....	340
User-Defined Assembly Folders	300	Auto Ballooning.....	342
Isolating Assembly Components	300	Moving and Aligning Balloons	343
Visibility Control.....	301	Editing a Balloon's Value.....	344
Adaptivity	301	Parts List.....	345
Project Geometry in the Context of an Assembly ...	302	Editing a Parts List	345
Creating an Adaptive Sketch/Part Manually...	302	Editing Parts List BOM Data	346
Exercise 6-3: Designing a Part in Context		Creating Custom Parts.....	347
of an Assembly	303	Wrapping a Parts List	347
Patterning Components.....	306	Exercise 6-9: Creating a Drawing	
Associative Pattern	306	from an Assembly	348
Rectangular Pattern	307	Applying Your Skills	357
Circular Pattern	308	Skills Exercise 6-1	357
Exercise 6-4: Patterning Components	309	Skills Exercise 6-2.....	359
Analysis Commands.....	311		
Measure Distance	311	<hr/>	
Identifying the Center of Gravity of an Assembly	311	7 Advanced Modeling Techniques	363
Interference Checking	312	<hr/>	
Exercise 6-5: Analyzing an Assembly.....	313	Introduction.....	363
Driving a Constraint	315	Objectives.....	363
Exercise 6-6: Driving a Constraint	316	Dimension Display, Relationships, and Equations..	364
Creating a Presentation File.....	319	Dimension Display	364
Creating Presentation Views and Snapshots..	320	A Dimension's Relationship.....	364
Tweak Components	322	Equations	365
		Parameters	365
		Creating Parameters	366
		Creating User Parameters	367
		Creating Linked Parameters	368

Exercise 7-1: Relationships and Parameters	370	Exercise 7-8: Splitting a Part into Multiple Solid Bodies	439
iParts	375	Mirror Features	441
Creating an iPart	376	Suppressing Features	443
Editing iParts	380	Reordering a Feature	443
Placing an iPart Member into an Assembly	380	Feature Rollback.....	444
Creating a Drawing for an iPart Factory	381	Content Center	445
Exercise 7-2: Creating and Placing an iPart	383	Introduction to Stress Analysis	446
iAssemblies	389	Create a Simulation Study – Step 1	447
iAssembly Author Dialog Box Options.....	390	Assign Material – Step 2	448
Editing iAssemblies	391	Applying Constraints – Step 3	448
Placing an iAssembly member into an Assembly	392	Applying a Load – Step 4	449
Creating a drawing for an iAssembly factory	392	Mesh Options – Step 5	451
Exercise 7-3: Creating and Placing an iAssembly	394	Run Simulation – Step 6.....	451
Sectioning a Part or Components in an Assembly	398	Review Simulation Results – Step 7	452
Design View Representations in a Part or an Assembly File	399	Display Results – Step 8	452
Emboss Text and Closed Profiles	400	Animate or Probe Results	453
Exercise 7-4: Creating Text and Emboss Features... ..	403	Report	454
Sweep Features	407	Exercise 7-9: Run a Stress Analysis on a Part	454
The Sweep Dialog Box	407	Exercise 7-10: Run a Stress Analysis on an Assembly	457
Creating a Sweep Feature Using a Profile	410	The Frame Generator	461
Exercise 7-5: Creating Sweep Features	410	Exercise 7-11: Creating a Frame	465
3D Sketching	413	Applying Your Skills.....	472
3D Sketch Overview	413	Skill Exercise 7-1	472
3D Sketch Environment.....	413	Checking Your Skills	473
3D Sketch from Intersecting Geometry	413		
Project to Surface	414	<hr/>	
Project to a 3D Sketch	415	8 Introduction to Sheet Metal Design	475
3D Lines	416	Introduction.....	475
Create a 3D Sweep	417	Objectives.....	475
Import Points	417	Sheet Metal Design	476
Exercise 7-6: 3D Sketch & Sweep Features.....	419	Creating a Sheet Metal Part	476
Coil Features	423	Convert a Regular Part File to a Sheet Metal Part	476
Input Geometry	423	Sheet Metal Environment	476
Behavior	424	Adding Features from the 3D Model Tab.....	477
Output	425	Sheet Metal Parameters.....	477
Loft Features	426	Sheet Metal Defaults, Rules and Styles	477
Create a Loft	426	Sheet Metal Defaults.....	477
Exercise 7-7: Creating a Loft Feature	432	Sheet Metal Rules and Styles	478
Freeform Modeling.....	436	Sheet Metal Unfold Rule	482
Split a Part or Face	438	Exercise 8-1: Editing a Sheet Metal Style and Rule	483
Behavior	439	Face.....	486
		Unfold Options and Bend Tabs	487

Contour Flange	487
Width Extents	488
Unfold Options and Bend Tabs	489
Flange	490
Unfold Options and Bend Tabs	491
Exercise 8-2: Creating Sheet Metal Parts	492
Hem	496
Shape Tab	497
Unfold Options and Bend Tabs	497
Bend	497
Shape Tab	499
Unfold Options and Bend Tabs	499
Edit a Bend	499
Cut	500
Fold	501
Shape Tab	502
Unfold Options and Bend Tabs	503
Corner Round	503
Corner Chamfer	503
Exercise 8-3: Creating Bend, Cut, Hem and Fold Features	504
Flat Pattern	510
Define A-Side	510
Create Flat Pattern	510
Flat Pattern Environment.....	511
Flat Pattern Definition and Extents.....	511
Export a Flat Pattern	512
Detailing Sheet Metal Parts	512
Exercise 8-4: Flattening & Documenting Sheet Metal Parts	513
Applying Your Skills	517
Skill Exercise 8-1	517
Index	519