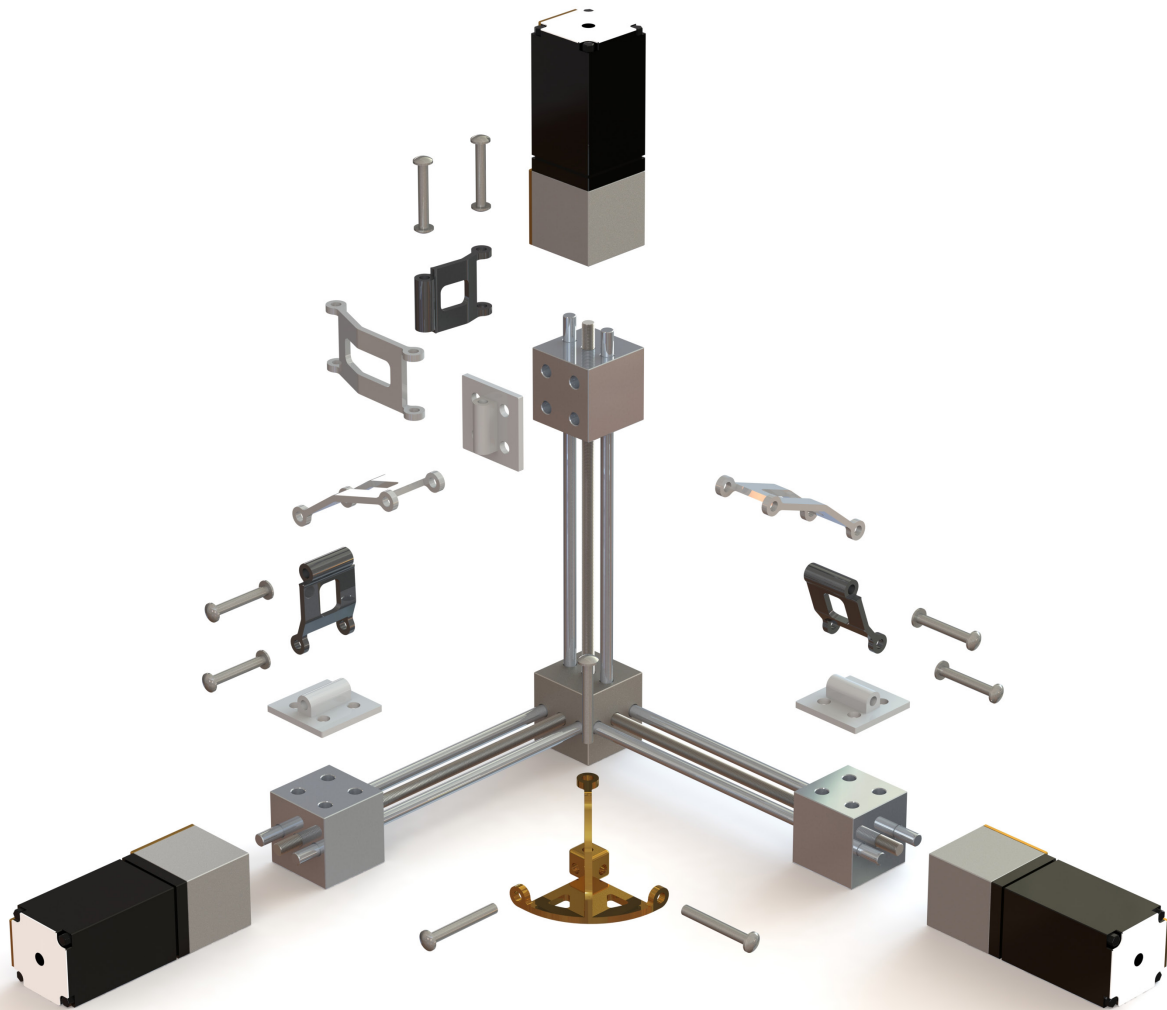


# SOLIDWORKS® 2022

## Basic Tools

Getting Started with Parts,  
Assemblies and Drawings



Paul Tran CSWE, CSWI

Visit the following websites to learn more about this book:



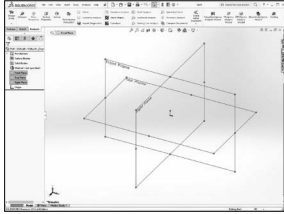
[amazon.com](https://www.amazon.com)

[Google books](https://books.google.com)

[BARNES & NOBLE](https://www.barnesandnoble.com)

# Table of Contents

**Introduction:**



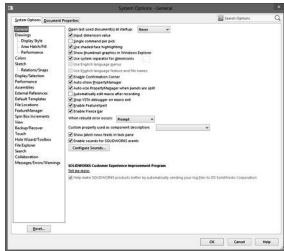
**SOLIDWORKS 2022 User Interface**

- The 3 reference planes
- The toolbars
- The system feedback symbols
- The status bar
- 2D sketch examples
- 3D feature examples

- XXI
- XXII
- XXII
- XXIV
- XXIV
- XXV
- XXVI

## Setting the System Parameters

**Chapter 1:**



**System Options**

**Setting up the system options**

- The general options
- The drawings options
- The display style options
- The area hatch/fill options
- The performance options
- The colors options
- The sketch options
- The relations / snaps options
- The display options
- The Selection options
- The performance options
- The assemblies options
- The external references options
- The default templates options
- The file locations options
- The feature manager options
- The spin box increments options
- The view options
- The backups / recover options
- The touch options
- The hole wizards / toolbox options
- The file explorer options
- The search options
- The collaboration options
- The messages/errors/warnings options

- 1-1
- 1-1
- 1-2
- 1-3
- 1-3
- 1-4
- 1-4
- 1-5
- 1-5
- 1-6
- 1-6
- 1-7
- 1-7
- 1-8
- 1-8
- 1-9
- 1-9
- 1-10
- 1-10
- 1-11
- 1-11
- 1-12
- 1-12
- 1-13
- 1-13
- 1-14
- 1-14

The import options	1-15
The export options	1-15
Questions for review	1-16

**Chapter 2: Document Templates 2-1**

**Setting up the Document Properties 2-1**

The drafting standard options 2-2

The annotations options 2-2

The balloon options 2-3

The datum options 2-3

The geometric tolerance options 2-4

The note options 2-4

The revision clouds options 2-5

The surface finishes options 2-5

The weld symbol options 2-6

The dimensions options 2-6

The angle options 2-7

The angular running options 2-7

The arc length options 2-8

The chamfer options 2-8

The diameter options 2-9

The hole callout options 2-9

The linear options 2-10

The ordinate options 2-10

The radius options 2-11

The virtual sharps options 2-11

The table options 2-12

The bill of materials options 2-13

The general options 2-13

The title block table options 2-14

The DimXpert options 2-14

The size dimension options 2-15

The location dimension options 2-15

The chain dimension options 2-16

The geometric tolerance options 2-16

The chamfer controls options 2-17

The display options 2-17

The detailing options 2-18

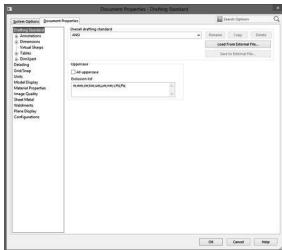
The grid / snap options 2-18

The units options 2-19

The model display options 2-19

The material properties options 2-20

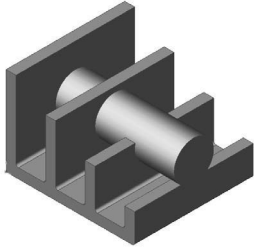
The image quality options 2-20



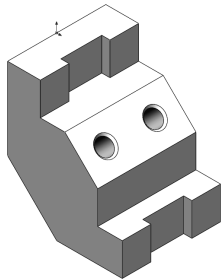
The sheet metal MBD options	2-21
The sheet metal options	2-21
The weldments options	2-22
The plane display options	2-22
The configurations options	2-23
Saving the settings in a part template	2-23
Questions for review	2-24

## Basic Modeling Topics

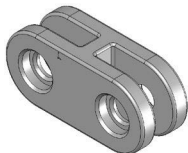
### Chapter 3:



<b>Basic Solid Modeling – Extrude Options</b>	<b>3-1</b>
Tools needed	3-2
Starting a new part	3-4
Changing the scene	3-5
Starting a new sketch	3-6
Using the Click + Hold + Drag Technique	3-9
Adding geometric relations	3-10
Adding a collinear relation	3-11
Geometric relations examples	3-12
Adding the horizontal dimensions	3-13
Adding the vertical dimensions	3-14
The status of a sketch	3-14
Hiding the sketch relation symbols	3-15
Extruding the base	3-16
Sketching on a planar face	3-17
Using the Trim Entities command	3-19
Extruding a boss	3-20
Extrude summary	3-24
Adding the model fillets	3-25
Questions for review	3-27
Using the search commands	3-28
Exercise 1: Extrude Boss & Hole Wizard	3-32
Exercise 2: Extrude Boss & Extrude Cut	3-35



### Chapter 4:



<b>Basic Solid Modeling – Extrude and Revolve</b>	<b>4-1</b>
<b>Link Components</b>	<b>4-2</b>
Tools needed	4-2
Sketching the first profile	4-3
Extruding the first solid	4-3
Creating the bore holes	4-4

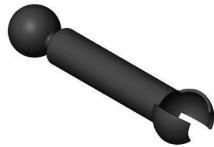


Cutting the bore holes	4-5
Mirroring the bore holes	4-6
Extruding a Through All cut	4-8
Adding fillets	4-8
Creating the sub-components	4-10
Revolving the base feature	4-10
Adding chamfers	4-11
Extruding the base	4-15
Sketching the Recess Profiles	4-15
Extruding a blind cut	4-16
Mirroring the cut	4-16
Adding holes	4-17
Adding more fillets	4-18
Questions for review	4-20
Exercise: Extrude Boss & Extrude Cut	4-21

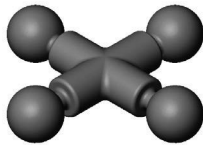
**Chapter 5:**

**Revolve Parts 5-1**

**Ball Joint Arm 5-1**



Tools needed	5-2
Creating the base profile	5-3
Revolving the base feature	5-4
Sketching the opened-end profile	5-4
Revolving the opened-end feature	5-5
Mirroring the revolved feature	5-6
Adding fillets	5-6
Questions for review	5-8
Exercise: Flat Head Screw Driver	5-9



**Derived Sketches 5-12**

**Center Ball Joint 5-12**



Tools needed	5-13
Creating the base profile	5-14
Revolving the base feature	5-14
Creating a new work plane	5-15
Creating a derived sketch	5-15
Positioning the derived sketch	5-16
Adding fillets	5-17
Questions for review	5-18
Exercise: Revolve Parts - Wheel	5-19
Exercise: Plastic bottle	5-21

**Chapter 6:**

**Rib & Shell Features**

**6-1**

**Plastic Tray**

6-1

Tools needed

6-2

Sketching the base profile

6-3

Extruding the base feature

6-3

Adding the side cutouts

6-4

Removing more material

6-5

Creating the rib profiles

6-6

Adding fillets

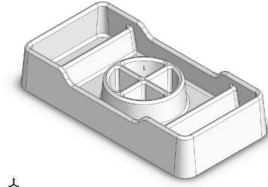
6-7

Shelling the lower portion

6-8

Questions for review

6-9



**Shell & Mirror Features - Styrofoam Box**

**6-10**

Tools needed

6-11

Starting a new part

6-12

Extruding the base

6-12

Adding fillets

6-13

Creating an offset sketch

6-14

Creating a recess

6-14

Creating the rim

6-16

Creating the fold feature

6-17

Mirroring the solid body

6-18

Creating the lock feature

6-19

Creating the lock cavity

6-20

Shelling the part

6-22

Questions for review

6-25



**Chapter 7:**

**Patterns**

**7-1**

**Linear Patterns – Test Tray**

**7-1**

Tools needed

7-2

Sketching the base profile

7-3

Extruding the base feature

7-3

Sketching the seed feature

7-4

Extruding a seed feature

7-4

Creating a linear pattern

7-5

Shelling the base feature

7-6

Adding fillets

7-7

Questions for review

7-8



**Circular Patterns – Spur Gear**

**7-9**

Tools needed

7-10

Sketching the body profile

7-11

Using the dynamic mirror

7-11





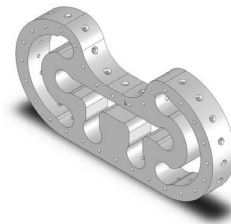
Revolving the base body	7-13
Sketching the thread profile	7-14
Converting the entities	7-15
Trimming the sketch entities	7-16
Adding dimensions	7-16
Cutting the first tooth	7-17
Circular patterning the tooth	7-17
Adding the keyway	7-19
Extruding a cut	7-20
Questions for review	7-22

**Circular Patterns – Circular Base Mount** **7-23**



Tools needed	7-24
Creating the base sketch	7-25
Revolving the base feature	7-25
Creating the first side-tab sketch	7-26
Extruding the side-tab	7-26
Adding a counterbore hole	7-27
Creating the circular pattern	7-28
Creating a new plane	7-28
Creating the pockets sketch	7-29
Adding fillets	7-30
Questions for review	7-32

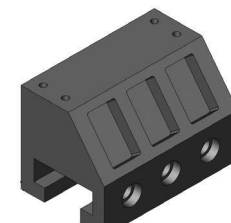
**Curve Driven Pattern and Hole Wizard** **7-35**



Tools needed	7-36
Opening the existing file	7-37
Extruding the base	7-38
Creating the sketch for the first hole	7-38
Constructing the curve-sketch	7-39
Creating the first curve driven pattern	7-40
Adding the hole wizard	7-41
Creating the second curve driven pattern	7-42

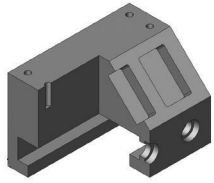
**Chapter 8: Part Configurations** **8-1**

**Machined Block** **8-1**



Tools needed	8-2
Sketching the base profile	8-3
Extruding the base feature	8-3
Creating the pocket profiles	8-4
Adding a counterbore	8-5
Patterning the counterbore	8-6
Creating the mirror-plane	8-6





Mirroring the counterbores	8-7
Creating the blind holes	8-8
Creating a cutaway section	8-9
Sketching a profile for the cut	8-10
Creating the section cut	8-11
Switching between the configurations	8-12
Splitting the FeatureManager pane	8-13
Creating a new configuration	8-13
Questions for Review	8-16
Exercise 1: Using Vary-Sketch	8-17
Exercise 2: Using Vary-Sketch	8-20

**Chapter 9:**

**Modeling Threads**

**9-1**

**Threaded Insert**

9-1

Tools needed

9-2

Sketching the base profile

9-3

    Revolving the base feature

9-4

Creating the right-hand threads

9-4

Using the Mirror bodies option

9-7

Adding chamfers

9-8

Questions for review

9-9

Exercise: Modeling threads - Internal

9-10

Exercise: Internal threads

9-14

Exercise: External threads

9-22



## Bottom-Up Assembly Topics

**Chapter 10:**

**Bottom Up Assembly**

**10-1**

**Ball Joint Assembly**

10-1

Tools needed

10-2

Starting a new assembly template

10-3

Inserting the components

10-4

Mating the components

10-6

Moving the component

10-7

Inserting another instance

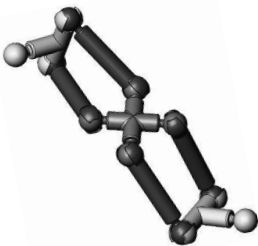
10-7

Constraining the components

10-8

Questions for review

10-11



**Bottom Up Assembly – Links Assembly**

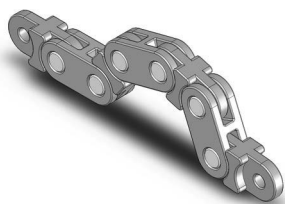
**10-12**

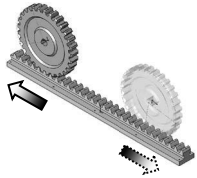
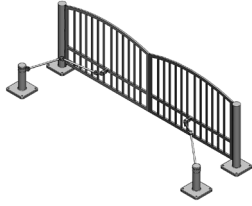
Tools needed

10-13

Starting a new assembly template

10-14

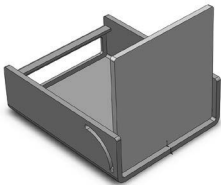




Placing the first component	10-15
Adding other components	10-16
Changing colors	10-17
Inserting the single link into the assembly	10-18
Using the selection filters	10-18
Adding mates	10-19
Adding a width mate	10-20
Making copies of the component	10-21
Inserting other components into the assembly	10-23
Rotating the pin head	10-23
Constraining the alignment pin	10-24
Constraining the pinhead	10-25
Using the align & anti-align options	10-27
Questions for review	10-29
Exercise: Gate Assembly	10-30

**Chapter 11:**

**Using Advanced Mates 11-1**



<b>Rack and Pinion</b>	11-1
Open an assembly document	11-2
Adding standard mates	11-3
Suppressing a mate	11-4
Adding a mechanical mate	11-4
Testing the mates	11-5
Creating a linear motion	11-5



**Limit & Cam Mates 11-8**

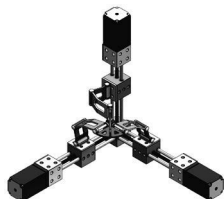
Opening a part file	11-8
Adding mates	11-9
Adding a width and a cam mate	11-10
Adding a parallel mate	11-12
Adding a limit mate	11-13
Exercise: Cam Followers	11-16
Questions for review	11-20
Exercise: Using Gear Mates	11-21
Exercise: Using Limit Mates	11-25
Exercise: Bottom up assembly	11-27



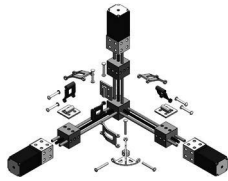
**Level 1 Final Exam: Assembly Motions 11-33**

**Chapter 12:**

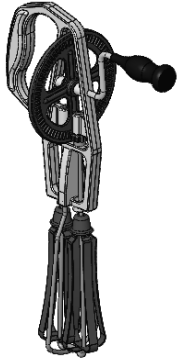
**Kinematics – Assembly Motions 12-1**



<b>Assembly Motions</b>	12-2
Tools Needed	12-2
Opening an assembly document	12-3

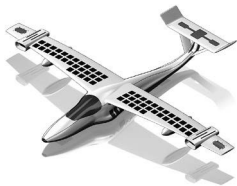


Constraining the link_center	12-4
Mating the 1 <sup>st</sup> pin_long	12-5
Mating the last 2 pins	12-6
Testing the kinematics motions	12-6
Saving the assembly	12-8

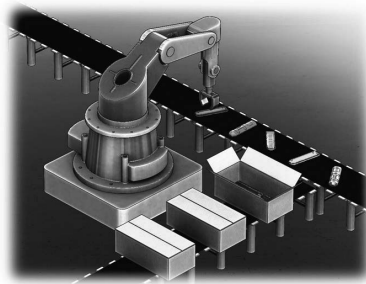


<b>SOLIDWORKS Animator – The Basics</b>	<b>12-9</b>
Opening an existing assembly document	12-9
Adding a rotary motor	12-10
Viewing the rotary motions	12-11
Using the animation wizard	12-11
Animating the explode of an assembly	12-13
Animating the collapse of the assembly	12-14
Changing the view orientation of the assembly	12-16
Creating the flashing effects	12-19
Looping the animation	12-22
Saving the animation as AVI	12-23
Viewing the AVI with Windows Media Player	12-24

**Chapter 13:**

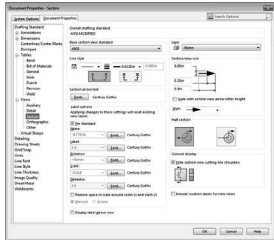


<b>PhotoView360 Basics</b>	<b>13-1</b>
Activating PhotoView 360	13-1
Setting the appearance	13-2
Setting the scene	13-3
Setting the image quality options	13-4
Rendering the image	13-5
Exercise: HeliDrone Assembly	13-7
Rendering the screen with Ambient Occlusion	13-11
Opening an assembly document	13-11
Changing the scene	13-12
Retrieving a named view	13-13
Applying appearances to the components	13-14



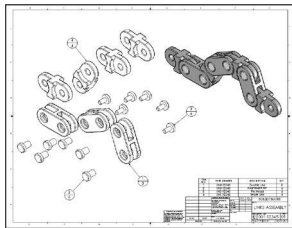
# Drawing Topics

## Chapter 14:

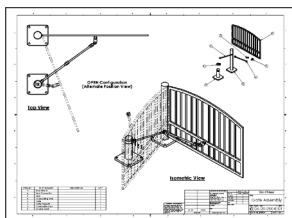


<b>Drawing Preparations</b>	<b>14-1</b>
<b>Customizing the Document Template</b>	14-1
Tools needed	14-2
Setting up new drawing	14-3
Switching to the sheet format layer	14-5
Switching to the sheet layer	14-6
Setting up the drawing options	14-7
Setting up the document template options	14-8
Saving the document template	14-16
Questions for review	14-17

## Chapter 15:



<b>Assembly Drawings</b>	<b>15-1</b>
<b>Links Assembly</b>	15-2
Tools needed	15-2
Creating a new drawing	15-3
Editing the sheet format	15-6
Setting up the anchor point to attach the B.O.M.	15-6
Switching back to the sheet layer	15-7
Opening an existing assembly document	15-8
Switching to the exploded view state	15-10
Changing the line style	15-11
Using the view palette	15-12
Switching to shaded view	15-13
Adding the bill of material (B.O.M.) to the drawing	15-13
Selecting the B.O.M. options	15-14
Creating the custom Properties	15-15
Modifying the B.O.M.	15-17
Reversing the table headers	15-19
Adding balloon callouts	15-20
Changing the balloon style	15-21
Questions for review	15-22
Exercises: Assembly Drawings	15-23

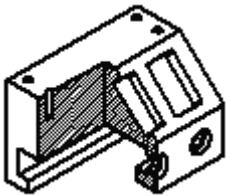
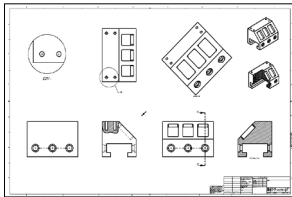


<b>Alternate Position Views</b>	<b>15-26</b>
Tools needed	15-27
Creating a new drawing	15-28
Creating the isometric drawing view	15-29
Changing the drawing view scale	15-30
Creating an alternate position drawing view	15-31

Adding the top drawing view	15-32
Adding text / annotations	15-34
Creating an exploded isometric view	15-35
Adding auto-balloons to the exploded view	15-36
Adding the bill of materials	15-37
Questions for review	15-38

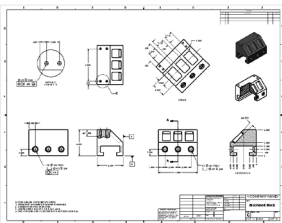
**Chapter 16: Drawing Views 16-1**

<b>Machined Block</b>	16-1
Tools needed	16-2
Creating a new drawing	16-3
Editing the sheet format	16-4
Modifying the existing text	16-6
Adding the title of the drawing	16-6
Using the view palette	16-7
Adding an isometric view	16-9
Moving the drawing views	16-10
Breaking the alignments between the views	16-11
Creating a detail view	16-12
Using the detail view options	16-12
Creating a projected view	16-13
Creating an auxiliary view	16-14
Creating a section view	16-15
Showing the hidden lines in a drawing view	16-16
Creating a broken-out-section	16-16
Adding a cutaway view	16-17
Changing configurations	16-18
Adding crosshatch to the sectioned surfaces	16-19
Modifying the crosshatch properties	16-20
Geometric tolerances & flag notes	16-22
Modifying & hole symbols	16-23
ANSI symbol descriptions	16-24



**Chapter 17: Detailing 17-1**

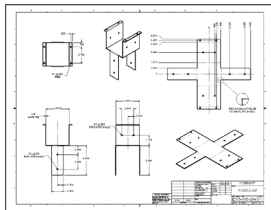
<b>Machined Block</b>	17-2
Tools needed	17-2
Opening a drawing document	17-3
Inserting dimensions from the model	17-3
Re-arranging the new dimensions	17-4
Inserting dimensions to the section view	17-4
Adding dimensions to the auxiliary view	17-6
Adding the center marks	17-6



Adding the datum feature symbols	17-7
Datum reference & geometric tolerance examples	17-8
Adding the hole specifications using the hole-callout	17-9
Adding geometric tolerances	17-9
Align the geometric tolerance	17-11
Attaching the geometric tolerance to the driving dimension	17-12
Adding tolerances / precision to dimensions	17-13
Adding symmetric tolerance to a dimension	17-14
Adding surface finish callouts	17-14
Adding non-parametric callouts	17-16
Inserting notes	17-16
Changing the document's font	17-17
Questions for review	17-19
Exercise: Detailing I	17-20
Exercise: Detailing II	17-21
Fastener Callouts	17-22
Thread Nomenclature	17-23
Attaching note or symbol to a dimension	17-24

**Chapter 18: Sheet Metal Drawings 18-1**

<b>Post Cap</b>	18-1
Tools needed	18-2
Starting a new drawing	18-3
Creating the 3 standard views	18-4
Rearranging the drawing views	18-5
Creating the flat pattern drawing view	18-5
Creating a detail view	18-6
Adding the ordinate dimensions	18-6
Adding the model dimensions	18-7
Creating the isometric flat pattern view	18-9
Showing / hiding the bend lines	18-10
eDrawing & 3D Drawing View	18-11
SOLIDWORKS 2022 – 3D Drawing View	18-20
Reorienting views	18-23



**Chapter 19: Configurations 19-1**

<b>Part I: Part, Assembly &amp; Drawing</b>	19-1
Tools needed	19-2
Opening an assembly document	19-3
Using configurations in the part mode	19-3
Changing the pitch	19-4
Creating an assembly configuration	19-5





Changing the mate conditions	19-5
Adding new mates	19-6
Changing configuration	19-6
Using configurations in a drawing	19-7
Changing the configuration of a drawing view	19-8

**Part II: Part, Assembly & Drawing 19-9**

Tools needed	19-10
Part Configurations	19-11
Opening a part document	19-11
Creating a new configuration	19-11
Changing the number of the spokes	19-12
Viewing the configurations	19-13
Assembly configurations	19-14
Starting a new assembly	19-14
Inserting the Sub-Assembly	19-15
Mating the sub-assembly	19-16
Viewing the assembly configurations	19-18
Drawing Configurations	19-19
Creating an assembly drawing	19-19
Creating the standard drawing views	19-20
Auto start the projected view	19-21
Creating the aligned section view	19-21
Creating the isometric view	19-22
Displaying the exploded view	19-23
Changing configurations	19-24
Adding annotations	19-24



**Chapter 20:**

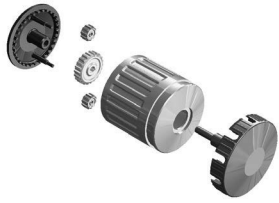
**Design Tables 20-1**



Tools needed	20-2
Copying a part document	20-3
Creating a new design table	20-4
Transferring the dimensions to the design table	20-5
Using Excel's addition formula	20-5
Controlling the suppression-states of the holes	20-7
Viewing the configurations generated by the design table	20-8



<b>Assembly – Design Tables 20-9</b>	
Copying the eggbeater assembly	20-9
Creating a new assembly design table	20-10
Defining the column headers	20-11
Inserting the control parameters	20-12
Adding the configuration names	20-13

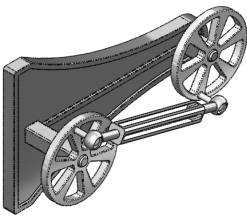


Assigning the control values	20-13
Viewing the new configurations	20-14
Exercise: Part design tables	20-15

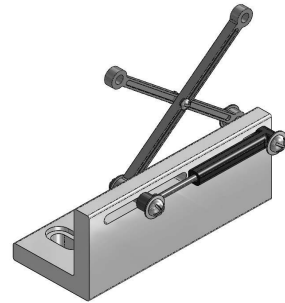
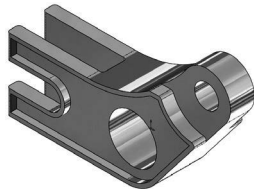
**Level 2 Final Exam 20-19**

Table of U.S. Measures	20-21
Table of Metric Measures	20-22

**CSWA Preparation Materials (Certified SOLIDWORKS Associate)**



Preparation materials for the CSWA examination	<b>21-1</b>
Drafting competencies	21-3
Basic Part Modeling	21-6
Bottom Up Assembly 1	21-30
Bottom Up Assembly 2	21-42



**Glossary  
Index**

**SOLIDWORKS 2022 Quick-Guides:**

Quick Reference Guide to SOLIDWORKS 2022 Command Icons and Toolbars.

