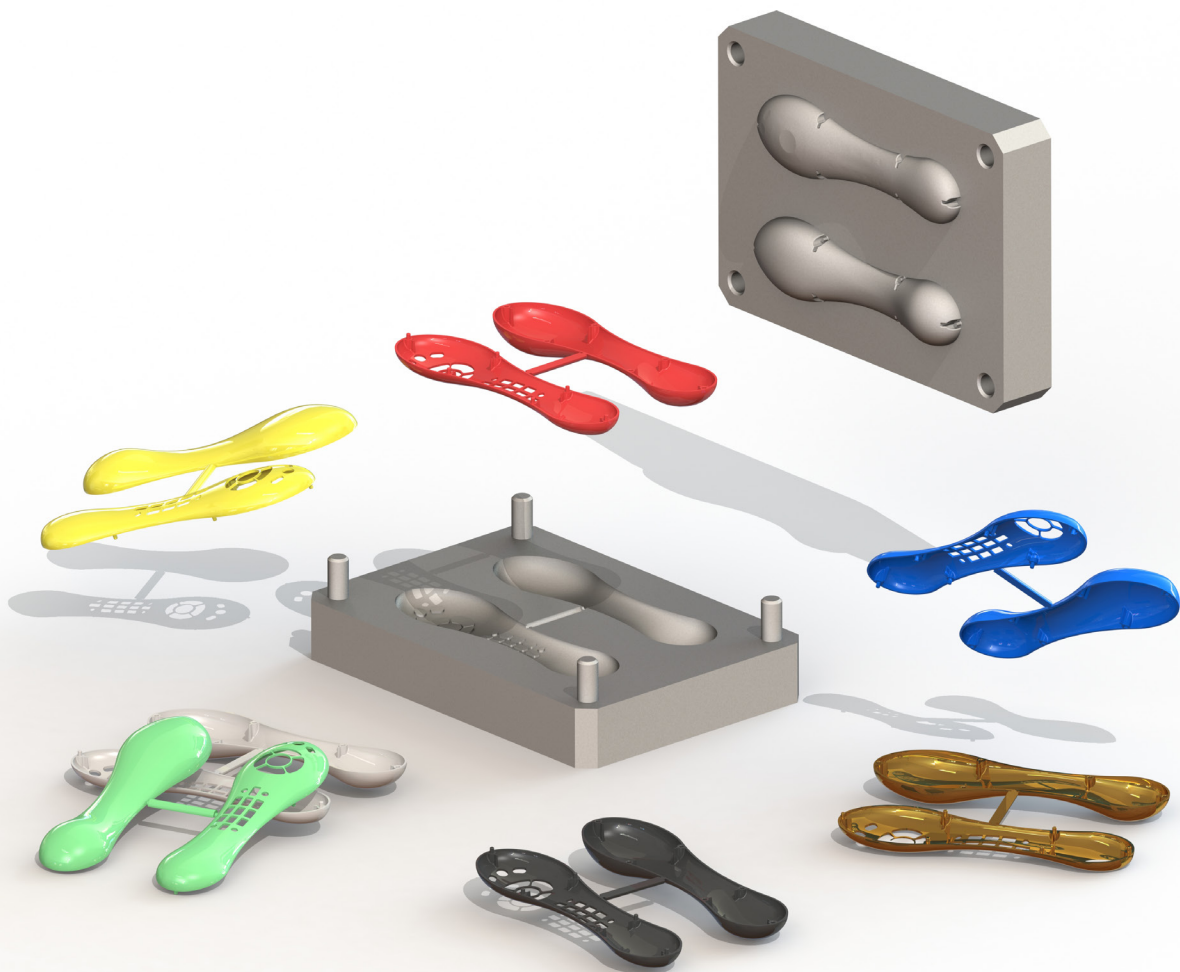


The Complete Guide to **Mold Making with SOLIDWORKS® 2022**

Basic through Advanced Techniques



Paul Tran CSWE, CSWI

Visit the following websites to learn more about this book:




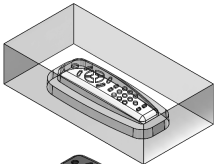
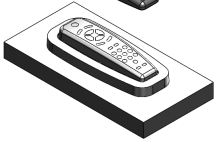
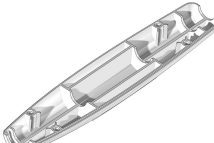
[amazon.com](https://www.amazon.com)

[Google books](https://books.google.com)

[BARNES & NOBLE](https://www.barnesandnoble.com)

TABLE OF CONTENTS

The Complete Guide to Mold Making with SOLIDWORKS 2022

Chapter 1: Plastic Part Design 1	1-1
	Remote Control 1-1
	Starting a new part document 1-1
	Extruding the main body 1-2
	Making a curved cut 1-2
	Adding fillets 1-3
	Shelling the part 1-4
	Making a recess feature 1-6
	Copying a sketch 1-7
	Creating the button holes 1-7
	Creating the mounting bosses 1-8
	Adding the support ribs 1-9
	Adding the rib fillets 1-11
	Assigning material 1-12
	Changing colors 1-13
	Calculating the mass 1-14
	Creating the core and cavity molds 1-15
	Applying the scale factor 1-15
	Creating the parting lines 1-15
	Creating the shut-off surfaces 1-16
	Creating the parting surfaces 1-17
	Adding a reference plane 1-18
	Inserting a tooling split 1-19
	Separating the mold blocks 1-20
	Hiding the references 1-21
	Renaming the solid bodies 1-21
	Assigning materials 1-22
	Exercise - Plastic part design 2 1-23

Chapter 2: Surface Repair 2-1

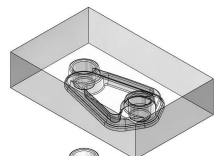


Surface Repair – Mouse 2-1

Opening a parasolid document	2-1
Running Import Diagnostics	2-1
Examining the small surfaces	2-2
Deleting surfaces and holes	2-3
Patching the openings	2-4
Adding drafts	2-5
Making a split line	2-6
Creating face fillets	2-7
Adding thickness	2-8
Creating a recess cut	2-9
Assigning material	2-10

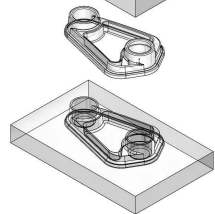


Chapter 3: Core and Cavity Creation 3-1



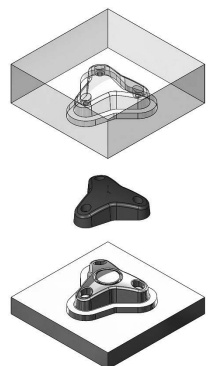
Core and Cavity – Plastic Tray 3-1

Opening a part document	3-1
Applying the scale factor	3-1
Creating the parting lines	3-2
Creating a parting surface	3-3
Making the mold block sketch	3-4
Creating a tooling split feature	3-5
Hiding the references	3-6
Assigning materials	3-7
Changing the transparency	3-7
Separating the mold blocks	3-8

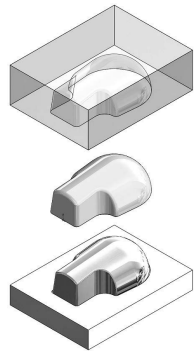


Exercise – Creating a Core and Cavity 3-11

Applying the scale factor	3-11
Creating the parting lines	3-12
Creating the shut-off surfaces	3-13
Creating the parting surfaces	3-14
Adding a new plane	3-15
Making the sketch of the mold block	3-15
Inserting a tooling split feature	3-16
Separating the mold blocks	3-17

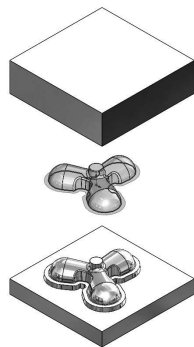


Chapter 4: Planar Parting Lines 4-1



Planar Parting Lines – Drone’s Canopy 4-1

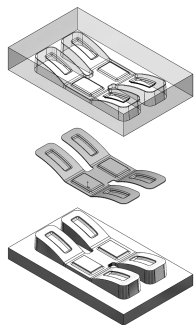
- Opening a part document 4-1
- Scaling the part 4-1
- Creating the parting lines 4-2
- Creating the parting surfaces 4-3
- Making the mold block sketch 4-4
- Inserting a tooling split feature 4-4
- Adding a command to the toolbar 4-5
- Separating the mold block 4-6
- Hiding the references 4-7
- Renaming the solid bodies 4-8
- Assigning material 4-8
- Changing to transparency 4-9



Exercise - Planar Parting Lines 4-11

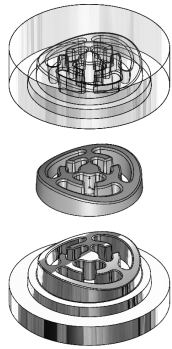
- Opening a part document 4-11
- Scaling the part 4-11
- Creating the parting lines 4-12
- Creating the parting surfaces 4-13
- Adding a new plane 4-14
- Making the mold block sketch 4-15
- Inserting a tooling split 4-15
- Changing materials 4-16

Chapter 5: Interlock Surface 5-1



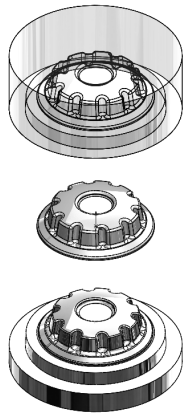
Interlock Surface 1: Stabilizer 5-1

- Opening a part document 5-1
- Applying the scale factor 5-1
- Creating the parting lines 5-2
- Creating the parting surfaces 5-3
- Making the mold block sketch 5-4
- Inserting a tooling split feature 5-4
- Hiding the references 5-5
- Changing materials 5-5
- Separating the mold blocks 5-6
- Changing the transparency 5-7



Interlock Surface 2: Plastic Cap **5-9**

Opening a part document 5-9
 Applying the scale factor 5-9
 Creating the parting lines 5-10
 Adding the shut-off surfaces 5-11
 Creating the parting surfaces 5-12
 Adding a new plane 5-13
 Making the mold block sketch 5-13
 Creating a tooling split feature 5-14
 Separating the mold block 5-15
 Renaming the solid bodies 5-17
 Assigning materials 5-17
 Changing the transparency 5-18

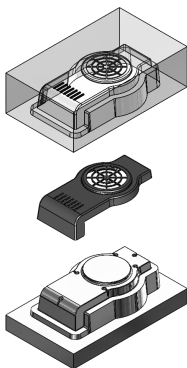


Interlock Surface Exercise Round Knob **5-19**

Opening a part document 5-19
 Applying the scale factor 5-19
 Creating the parting lines 5-20
 Creating the parting surfaces 5-21
 Adding a new plane 5-22
 Making the sketch of the mold block 5-22
 Inserting a tooling split feature 5-23
 Assigning materials 5-24

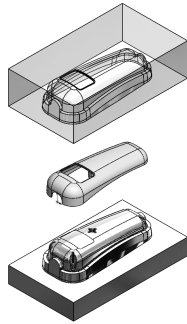
Chapter 6: Non-Planar Parting Lines **6-1**

Non-Planar parting Lines – Fan Cover **6-1**



Opening a part document 6-1
 Applying the scale factor 6-1
 Creating the parting lines 6-2
 Creating the shut-off surfaces 6-3
 Creating the parting surfaces 6-4
 Adding a new plane 6-4
 Sketching the mold block profile 6-5
 Splitting the mold blocks 6-5
 Hiding the references 6-6
 Separating the mold blocks 6-7
 Changing the transparency 6-8
 Renaming the solid bodies 6-8
 Assigning materials 6-9

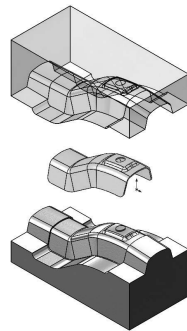
Exercise - Non-Planar Parting Lines **6-11**
Meter Reader Upper Housing



Opening a part document	6-11
Applying the scale factor	6-11
Creating the parting lines	6-12
Creating the parting surfaces	6-13
Adding the ruled surfaces	6-14
Making a lofted surface	6-15
Extending a surface	6-15
Trimming the surfaces	6-16
Knitting the surfaces	6-20
Creating the shut-off surfaces	6-21
Adding a new plane	6-21
Inserting a tooling split feature	6-22
Adjusting the block thickness	6-22
Adding an interlock surface	6-22
Separating the mold block	6-23
Hiding the references	6-23
Changing materials	6-24
Renaming the solid bodies	6-24

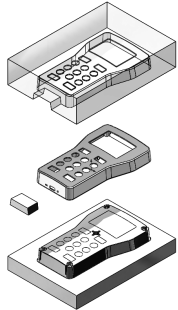
Chapter 7: Manual Parting Lines **7-1**

Manual Parting Lines - Heat Shield **7-1**



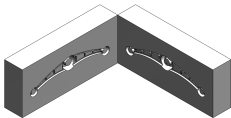
Open a part document	7-1
Applying the scale factor	7-1
Creating the parting lines	7-2
Creating the shut-off surfaces	7-3
Creating the parting surfaces	7-4
Creating the ruled surfaces	7-6
Trimming with a sketch	7-7
Making a 3D sketch	7-8
Creating corner patches	7-9
Knitting the surfaces	7-11
Creating a reference plane	7-12
Creating a tooling split	7-13
Separating the mold blocks	7-14
Hiding the references	7-15
Changing to transparency	7-16

Chapter 8: Undercuts and Slide Cores **8-1**
Stress Gauge Upper Housing **8-1**



Open a part document 8-1
 Applying the scale factor 8-1
 Creating the parting lines 8-2
 Creating the shut-off surfaces 8-3
 Creating the parting surfaces 8-4
 Sketching the mold block profile 8-5
 Making the mold block sketch 8-5
 Analyzing the undercuts 8-6
 Sketching the slide core profile 8-7
 Extruding the slide core block 8-8
 Separating the mold blocks 8-9
 Moving the slide core block 8-10
 Hiding the references 8-11
 Changing the transparency 8-12

Chapter 9: Alternative Methods **9-1**



Using Combine Subtract – Rocker Arm **9-1**
 Open a part document 9-1
 Applying the scale factor 9-1
 Making the mold block sketch 9-2
 Extruding the mold block 9-2
 Creating a combine subtract feature 9-3
 Splitting a solid body 9-4
 Rotating a solid body 9-5



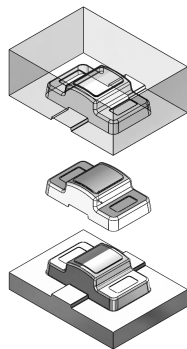
Using Cut with Surface – Rocker Arm **9-6**
 Isolating a surface body 9-6
 Making the mold block sketch 9-7
 Converting to planar surface 9-8
 Trimming the surfaces 9-9
 Knitting the surfaces 9-10
 Creating an extruded boss 9-11
 Cutting with a surface 9-12
 Moving a solid body 9-13



Using Cavity in Assembly – Rocker Arm **9-14**
 Tracing the sketch picture 9-14
 Inserting the engineered part 9-14

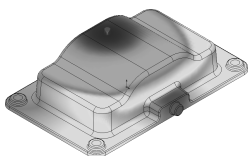
Editing a component	9-15
Inserting a cavity feature	9-15
Creating an exploded view	9-16

Chapter 10: Thickness Analysis 10-1



Thickness Analysis – Medication Upper Case	10-1
Open a part document	10-1
Setting the parameters	10-1
Analyzing the thickness	10-2
Viewing the results	10-2
Creating a section view	10-3
Locating the thick and thin regions	10-3
Re-arranging the shell feature	10-4
Scaling the part	10-5
Creating the parting lines	10-5
Creating the parting surfaces	10-6
Adding a new plane	10-7
Making the mold block profile	10-7
Inserting a tooling split	10-8
Adjusting the block sizes	10-8
Hiding the references	10-9
Renaming the solid bodies	10-9
Separating the mold blocks	10-10
Changing the transparency	10-11

Chapter 11: Using SOLIDWORKS Plastics 11-1



Plastics Analysis– Basin	11-1
Open a part document	11-1
Enabling SOLIDWORKS Plastics	11-1
The PlasticsManager	11-2
Setting the domains and boundary conditions	11-2
Specifying the injection location	11-3
Creating a shell mesh	11-4
Assigning material	11-5
Running the flow analysis	11-6
Viewing the results	11-7
Viewing the report text file	11-9

Chapter 12: Plastics Flow Analysis 12-1

Plastics – Flow Simulation Analysis 12-1



Open a part document	12-1
Enabling SOLIDWORKS Plastics	12-1
Setting up the mesh	12-2
Viewing the PlasticsManager tree	12-2
Adding an injection location	12-3
Creating a mesh	12-4
Selecting a polymer	12-5
Running the flow analysis	12-6
Viewing the fill-time plot	12-7
Animating the results	12-8
Displaying the weld lines	12-9
Viewing the results	12-10

Glossary

Index by chapters

SOLIDWORKS 2022 Quick-Guides:

Quick Reference Guide to SOLIDWORKS 2022 Command Icons and Toolbars.

