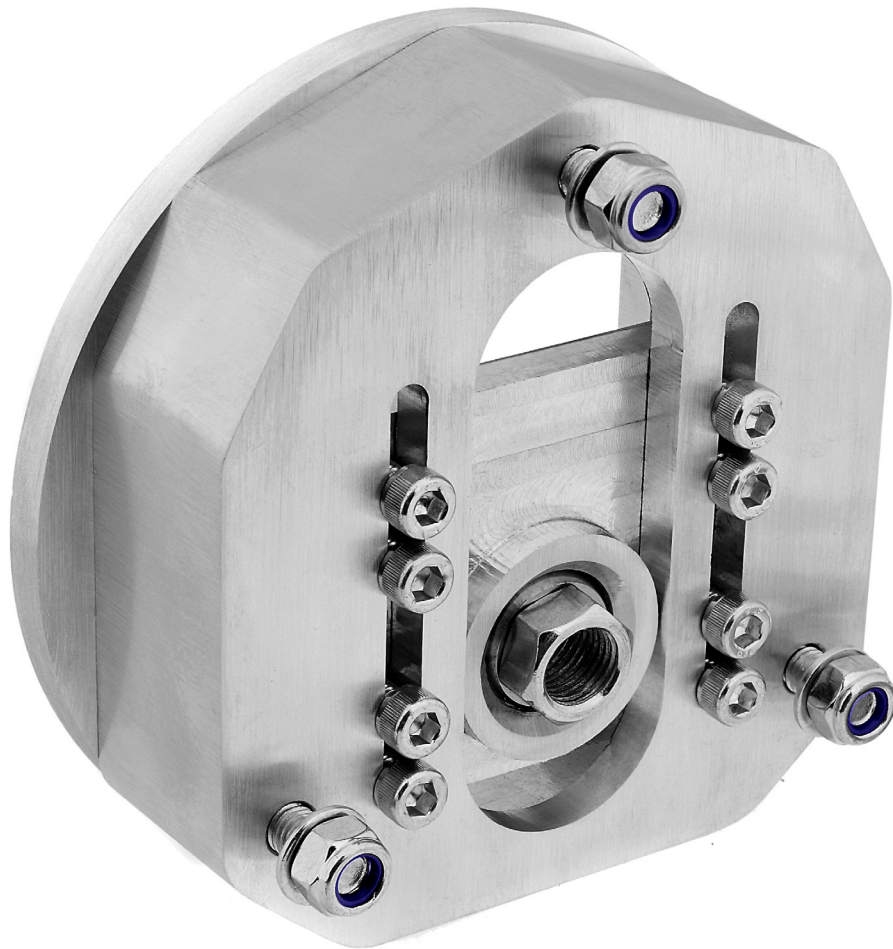


# SOLIDWORKS® 2023 Quick Start



David C. Planchard, CSWP,  
SOLIDWORKS Accredited Educator

Visit the following websites to learn more about this book:



[amazon.com](https://www.amazon.com)

[Google books](https://books.google.com)

[BARNES & NOBLE](https://www.barnesandnoble.com)

## TABLE OF CONTENTS

<b>Introduction</b>	<b>I-1</b>
About the Author	I-4
Acknowledgements	I-5
Contact the Author	I-5
Note to Instructors	I-5
Trademarks, Disclaimer, and Copyrighted Material	I-6
References	I-6
Table of Contents	I-7
Overview of Chapters	I-15
Chapter 1: Overview of SOLIDWORKS and the User Interface	I-15
Chapter 2: 2D Sketching, Features and Parts	I-15
Chapter 3: Assembly Modeling - Bottom-up Method	I-16
Chapter 4: Design Modifications	I-16
Chapter 5: Drawing and Dimensioning Fundamentals	I-18
Chapter 6: Certified Associate - Mechanical Design (CSWA) exam	I-18
Chapter 7: Additive Manufacturing - 3D printing fundamentals	I-19
Book Layout	I-21
Windows Terminology in SOLIDWORKS	I-22
 <b>Chapter 1 - Overview of SOLIDWORKS and the User Interface</b>	 <b>1-1</b>
Chapter Objective	1-3
What is SOLIDWORKS?	1-3
Basic concepts in SOLIDWORKS	1-3
Start a SOLIDWORKS Session	1-4
<i>Tutorial: Start a SOLIDWORKS Session</i>	1-4
Welcome dialog box	1-4
Home Tab	1-5
Recent Tab	1-5
Learn Tab	1-5
Alerts Tab	1-6
SOLIDWORKS User Interface (UI) and CommandManager	1-7
Menu Bar toolbar	1-7
Menu Bar menu	1-8
Drop-down menu	1-8
Create a New Part Document	1-9
Novice Mode	1-10
Advanced Mode	1-10
Graphic Window (Default)	1-11
View Default Sketch Planes	1-12
Open a Part	1-12
Part FeatureManager	1-13
FeatureManager Rollback Bar	1-13
Heads-up View toolbar	1-15
Dynamic Annotation Views	1-15
Zoom to Fit	1-15
Zoom to Area	1-15
Window-Select	1-15

Rotate	1-15
Front View	1-16
Right View	1-16
Top View	1-16
Trimetric view	1-16
SOLIDWORKS Help	1-16
SOLIDWORKS Tutorials	1-17
User Interface Tools	1-17
Right-click	1-18
Consolidated toolbar	1-18
System feedback icons	1-18
Confirmation Corner	1-19
Heads-up View toolbar	1-19
CommandManager (Default Part tab)	1-22
CommandManager (Default Drawing tab)	1-23
CommandManager (Default Assembly tab)	1-24
CommandManager (Float/Fit)	1-25
Collapse the CommandManager	1-25
FeatureManager Design Tree	1-26
FeatureManager design tree tab	1-26
PropertyManager tab	1-26
Configuration Manager tab	1-26
DimXpertManager tab	1-26
DisplayManager tab	1-26
CAM tab	1-26
Hide/Show tab	1-26
Sensors tool	1-26
Tags	1-27
Split	1-27
Fly-out FeatureManager	1-28
Task Pane	1-29
3DEXPERIENCE MARKETPLACE	1-29
SOLIDWORKS Resources	1-30
Design Library	1-30
File Explorer	1-31
View Palette	1-31
Appearances, Scenes and Decals	1-31
Custom Properties	1-32
Motion Study tab	1-32
3D Views tab	1-34
Mouse Movements	1-35
Single-Click	1-35
Double-Click	1-35
Right-Click	1-35
Scroll Wheel	1-35
Summary	1-36
<b>Chapter 2 - 2D Sketching, Features and Parts</b>	<b>2-1</b>
Chapter Overview	2-1
Chapter Objective	2-3
Start a SOLIDWORKS Session	2-3

Create a new Part Document	2-3
Set Document Properties	2-5
Drafting Standard	2-5
Units	2-5
Precision	2-5
2D Sketching - Identify the Correct Sketch Plane	2-6
Sketch States	2-6
Under Defined	2-6
Fully Defined	2-6
Over Defined	2-6
Wheel Part - Base Sketch	2-7
Origin	2-7
Geometric Relations	2-9
Sketch Dimensions	2-9
Wheel Part - Sketch1: Circle, Geometric relations and Dimensions	2-10
Wheel Part - First Feature (Extruded Base)	2-10
Design Intent	2-11
Edit Base Sketch	2-13
Edit Sketch Plane	2-13
Display Modes, View Modes and View tools	2-14
Wheel Part - Sketch2: Centerline, Line and Mirror Entities	2-14
Wheel Part - Second Feature (Revolved Boss)	2-14
Wheel Part - Sketch3: Centerpoint Straight Slot, Circle and Construction geometry	2-20
Wheel Part - Third Feature (Extruded Cut)	2-20
Wheel Part - Fourth Feature (Circular Pattern)	2-24
Wheel Part - Fifth Feature (Hole Wizard)	2-25
Wheel Part - Sixth Feature (Fillet)	2-26
Wheel Part - Add Material (6061 Alloy)	2-28
Wheel Part - View Mass Properties	2-29
Wheel Part - Modify the Number of Instances in the Circular Pattern	2-30
Wheel Part - View the new Mass Properties	2-30
Wheel Part - Return to the original Number of Instances	2-30
Wheel Part - Apply Appearance	2-31
Wheel Part - Apply Measure	2-31
Summary	2-32
Exercises	2-36
 <b>Chapter 3 - Assembly Modeling - Bottom up method</b>	 <b>3-1</b>
Chapter Overview	3-1
Chapter Objective	3-3
Start a SOLIDWORKS Session	3-3
Create a new Assembly Document	3-4
Set Document Properties	3-5
Drafting Standard	3-5
Units	3-5
Precision	3-5
Assembly Modeling Approach	3-6
Linear Motion and Rotational Motion	3-6
Create the Fly Wheel Assembly	3-7
Insert the First Component - Bracket (Fixed to the origin)	3-7
Mate Types	3-9

Standard Mates	3-9
Advanced Mates	3-10
Mechanical Mates	3-11
Quick Mate	3-12
Insert the Second Component - Bushing	3-12
Insert a Concentric and Coincident Mate	3-12
Insert the Third Component - Axle	3-14
Insert a Concentric and Distance Mate	3-14
Insert the Fourth Component - Wheel	3-15
Insert a Concentric and Distance Mate	3-16
Insert the Fifth Component - Collar	3-18
Insert a Concentric and Coincident Mate	3-18
Insert the Sixth Component - 2 MM Set Screw	3-20
Insert a Concentric, Tangent and Coincident Mate	3-20
Create an Exploded View of the Fly Wheel Assembly	3-24
Create the Stirling Engine Assembly	3-26
Hide Component	3-27
Insert the Fly Wheel Assembly	3-28
Rotate Component	3-28
Insert a Concentric Mate	3-29
Insert a second Concentric Mate	3-30
Apply the Measure tool	3-31
Modify the Axle Component Length	3-31
Make the Fly Wheel Assembly Flexible	3-32
Insert a Coincident Mate	3-32
Show Components	3-33
Pack and Go the Assembly	3-34
Summary	3-35
Exercises	3-37
 <b>Chapter 4 - Design Modifications</b>	 <b>4-1</b>
Chapter Overview	4-1
Chapter Objective	4-3
Start a SOLIDWORKS Session	4-3
Open an Existing Assembly	4-4
Stirling Engine Modified Assembly	4-4
Verify Collision between Components	4-5
Apply the Move Component tool	4-5
Set Collision Detection	4-5
Apply the Interference Detection tool	4-7
Calculate the Interference -Note there is interference	4-8
Modify the Assembly (Connection Rod Mate)	4-9
Verify the Modification - Measure tool	4-10
Apply the Interference Detection tool - check Solution	4-11
Calculate the Interference - No interference	4-12
Locate the Center of Mass	4-13
Display the Center of Mass	4-14
Create a new Coordinate System	4-15
Display the Mass Properties - New Coordinate System	4-16
Apply Assembly Visualization	4-16
Sort Assembly Components by Mass	4-18

Create a Motion Study	4-20
Create and save a motion file	4-20
Summary	4-22
Exercises	4-25
 <b>Chapter 5 - Drawing and Dimensioning Fundamentals</b>	 <b>5-1</b>
Chapter Overview	5-1
Chapter Objective	5-3
Start a SOLIDWORKS Session	5-3
New Drawing Document	5-4
Sheet Properties	5-5
Document Properties	5-6
Drafting Standard	5-6
Units	5-6
Precision	5-6
Title Block	5-7
Fly Wheel Assembly Drawing	5-8
View Palette	5-8
Isometric Exploded View	5-8
Sheet Scale	5-8
Modify Display Mode	5-9
Auto Balloons	5-9
Bill of Materials	5-11
Set Custom Properties	5-14
Title Block	5-16
Bushing Part Drawing	5-19
View Palette	5-20
Front, Top, Right and Isometric View	5-20
Import Dimensions (Model Items tool)	5-22
Move Dimensions	5-23
Hide Dimensions	5-23
Insert Dimension Text	5-24
Modify Display Mode	5-24
Dimension Extension Line Gaps	5-25
Dimensions (Smart Dimension tool)	5-25
Annotation	5-26
Hide a View	5-27
Modify the Sheet Scale	5-28
Summary	5-29
Exercises	5-31
 <b>Chapter 6 - Certified Associate - Mechanical Design (CSWA) Exam</b>	 <b>6-1</b>
Introduction	6-3
Part 1 of the Exam	6-5
Basic Part Creation and Modification, Intermediate Part Creation and Modification	6-5
Assembly Creation and Modification	6-7
Part 2 of the Exam	6-8
Introduction and Drafting Competencies	6-8
Advanced Part Creating and Modification	6-9
Assembly Creation and Modification	6-10
Intended Audience	6-11

During the Exam	6-12
Drafting Competencies	6-13
Example 1	6-13
Example 2	6-13
Example 3	6-14
Example 4	6-14
Example 5	6-14
Example 6	6-14
Basic Part Creation and Modification, Intermediate Part Creation and Modification	6-15
Example 1	6-16
Example 2	6-17
Example 3	6-18
Example 4	6-19
Example 5	6-20
Example 6	6-21
Example 6A	6-23
Example 6B	6-23
Advanced Part Creation and Modification	6-24
Example 1	6-24
Example 2	6-26
Example 3	6-27
Example 4	6-28
Example 5	6-29
Example 6	6-31
Example 6A	6-32
Assembly Creation and Modification	6-33
Example 1	6-34
<b>Chapter 7 - Additive Manufacturing - 3D Printing Fundamentals</b>	<b>7-1</b>
Chapter Objective	7-3
Additive vs. Subtractive Manufacturing	7-4
3D Printer Technology	7-5
Stages of 3D Printing	7-5
Fused Filament Fabrication (FFF)	7-6
Stereolithography (SLA)	7-9
Selective Laser Sintering (SLS)	7-11
Select the Correct Filament Material for FFF	7-12
PLA (Polylactic Acid)	7-13
Flex/Soft PLA	7-13
PLA Storage	7-14
PLA Part Accuracy	7-14
ABS (Acrylonitrile-Butadiene-Styrene)	7-14
ABS Storage	7-15
ABS Part Accuracy	7-15
Nylon	7-16
Nylon 618	7-16
Nylon 645	7-16
Nylon Storage	7-17
Nylon Accuracy	7-17
PVA (Polyvinyl Alcohol)	7-17
STereolithography (*.stl) file	7-18



Save an STL (*.stl) file	7-18
Additive Manufacturing (*.amf) file	7-19
Save an Additive Manufacturing (*.amf) file	7-19
3D Manufacturing Format (*.3mf) file	7-20
Save a 3D Manufacturing Format (*.3mf) file	7-20
What is a Slicer?	7-21
How does a Slicer Work?	7-21
Slicer Parameters	7-21
Layer Height	7-21
Shell (Wall) Thickness	7-22
Infill Density/Overlap	7-22
Infill Patterns	7-22
Print Speed	7-23
Support Types	7-23
Touching Buildplate	7-23
Everywhere	7-24
Bed Platform Adhesion	7-24
Raft	7-24
Skirt	7-24
Brim	7-24
Part Orientation	7-25
Example 1	7-25
Example 2	7-26
Optimize Print Direction	7-26
Thin Region	7-26
Area of Overhang	7-26
Amount of needed Support	7-26
Remove Model from the Build Plate	7-28
Non-heated Build Plate	7-28
Heated Build Plate	7-28
Know the Printer's Limitations	7-29
Tolerance for Interlocking Parts	7-29
General Printing Tips	7-29
Reduce Infill/Overlap	7-29
Control Build Area Temperature	7-30
Add Pads	7-31
Safe Zone Rule	7-31
First Layer Not Sticking	7-31
Level Build Platform	7-32
Minimize Internal Support	7-32
Design a Water Tight Mesh	7-32
Clearance	7-32
In General	7-33
Print directly from SOLIDWORKS	7-34
Add-in	7-34

SOLIDWORKS Additive Manufacturing Certification (CSWA-AM)	7-35
Summary	7-36
<b>Appendix</b>	
SOLIDWORKS Keyboard Shortcuts	A-1
Modeling - Best Practices	A-3
Helpful On-Line Information	A-5
SOLIDWORKS Document Types	A-6
<b>Glossary</b>	<b>G-1</b>
<b>Index</b>	<b>I-1</b>