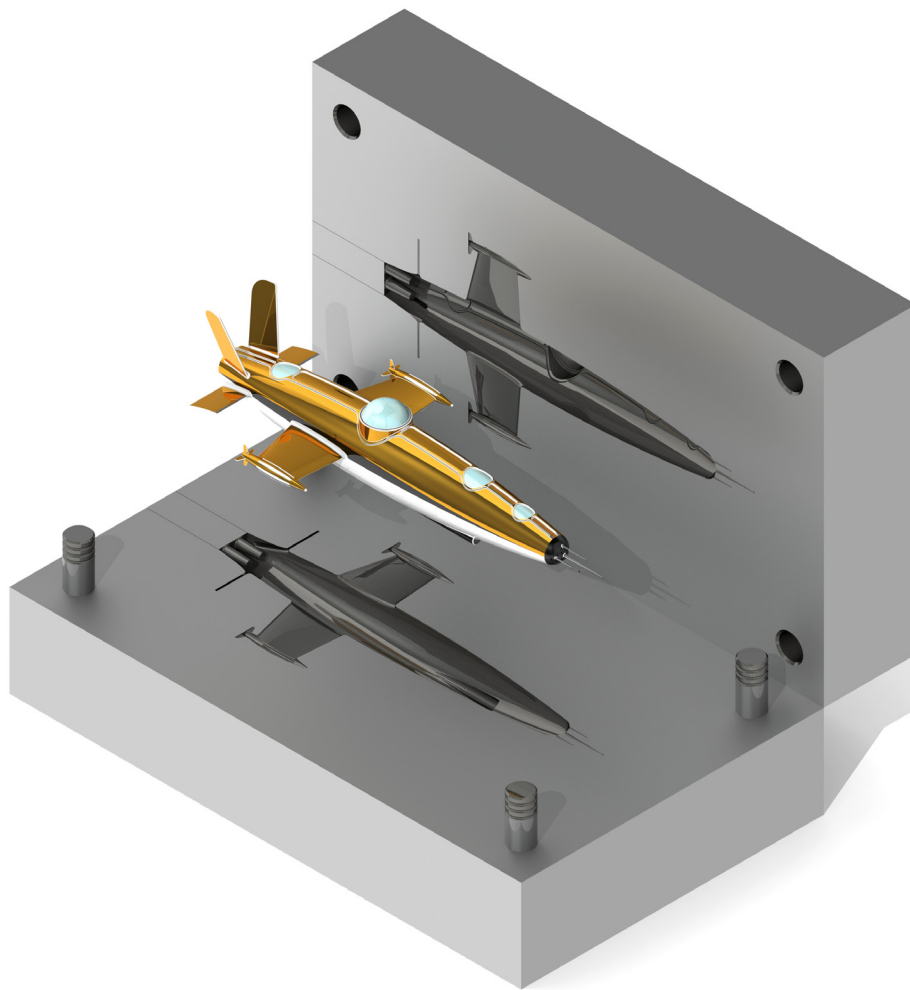


The Complete Guide to **Mold Making with SOLIDWORKS® 2023**

Basic through Advanced Techniques



Paul Tran CSWE, CSWI

Visit the following websites to learn more about this book:


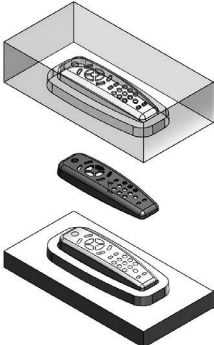
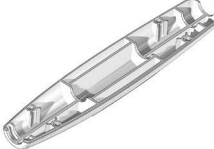


[amazon.com](https://www.amazon.com)

[Google books](https://books.google.com)

[BARNES & NOBLE](https://www.barnesandnoble.com)

TABLE OF CONTENTS

Chapter 1: Plastic Part Design	1-1
	Remote Control 1-1
	Starting a new part document 1-1
	Creating the parent sketch 1-1
	Extruding the main body 1-2
	Making the upper curved cut 1-2
	Adding the fillets 1-3
	Shelling the part 1-4
	Making the recess sketch 1-5
	Making the recess cut 1-6
	Copying a sketch 1-7
	Creating the mounting bosses 1-8
	Adding the support ribs 1-9
	Adding the mounting holes 1-10
	Adding the rib fillets 1-11
	Assigning material 1-12
Changing the part color 1-13	
Calculating the mass 1-14	
	Creating the core and cavity molds 1-15
	Applying the scale factor 1-15
	Creating the parting lines 1-15
	Creating the shut-off surfaces 1-16
	Creating the parting surfaces 1-17
	Adding a reference plane 1-18
	Inserting a tooling split 1-19
	Separating the mold blocks 1-20
	Hiding the references 1-21
	Assigning material to the mold blocks 1-22
Exercise - Plastic part design 2 1-23	
	

Chapter 2: Surface Repair 2-1

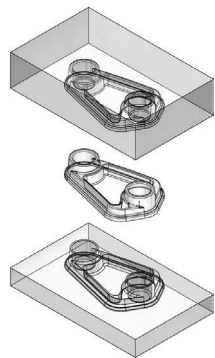


Surface Repair – Mouse 2-1

Opening a parasolid document 2-1
 Running Import Diagnostics 2-1
 Examining the small surfaces 2-2
 Deleting surfaces 2-3
 Deleting holes 2-3
 Patching the openings 2-4
 Adding draft 2-5
 Creating a split line feature 2-6
 Creating a face fillet 2-7
 Adding thickness 2-8
 Creating a recess cut 2-9
 Saving your work 2-10
 Exercise: Repair surfaces 2-11

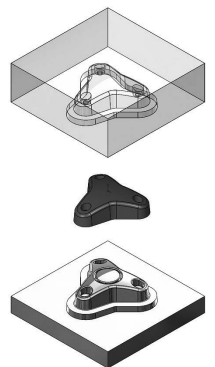


Chapter 3: Core and Cavity Creation 3-1



Core and Cavity – Plastic Tray 3-1

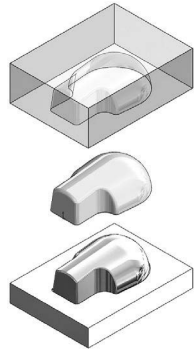
Opening a part document 3-1
 Applying the scale factor 3-1
 Creating the parting lines 3-2
 Creating a parting surface 3-3
 Making the mold block sketch 3-4
 Creating a tooling split feature 3-5
 Hiding the references 3-6
 Assigning materials 3-7
 Changing the transparency 3-7
 Separating the mold blocks 3-8



Exercise – Creating a Core and Cavity Plastic Knob 3-11

Opening a part document 3-11
 Applying the scale 3-11
 Creating the parting lines 3-12
 Creating the shut-off surfaces 3-13
 Creating the parting surfaces 3-14
 Adding a new plane 3-15
 Making the sketch of the mold block 3-15
 Inserting a tooling split feature 3-16
 Separating the mold blocks 3-17

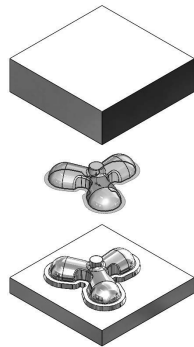
Chapter 4: Planar Parting Lines 4-1



Planar Parting Lines – Drone’s Canopy 4-1

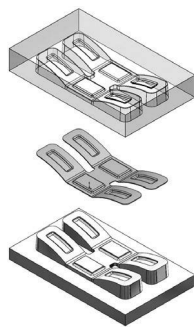
- Opening a part document 4-1
- Scaling the part 4-1
- Creating the parting lines 4-2
- Creating the parting surfaces 4-3
- Making the mold block sketch 4-4
- Adding the move/copy command 4-5
- Separating the mold blocks 4-6
- Hiding the references 4-7
- Renaming the mold blocks 4-8
- Assigning the materials 4-8
- Switching to transparency 4-9
- Saving your work 4-9

Exercise – Planar Parting Lines 4-11
Drone Cover Housing



- Opening a part document 4-11
- Scaling the part 4-11
- Creating the parting lines 4-12
- Creating the parting surfaces 4-13
- Adding a new plane 4-14
- Making the mold block sketch 4-15
- Inserting a tooling split 4-15
- Changing materials 4-16
- Saving your work 4-16

Chapter 5: Interlock Surface 5-1

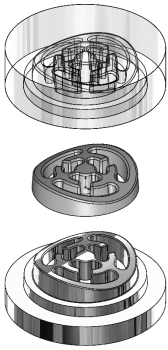


Interlock Surface 1 – Stabilizer 5-1

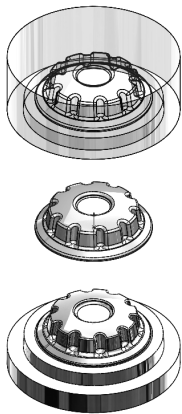
- Opening a part document 5-1
- Applying the scale factor 5-1
- Creating the parting lines 5-2
- Creating the parting surfaces 5-3
- Making the mold block sketch 5-4
- Hiding the references 5-5
- Separating the mold blocks 5-6
- Changing the transparency 5-7

Interlock Surface 2 – Plastic Cap 5-9

- Opening a part document 5-9

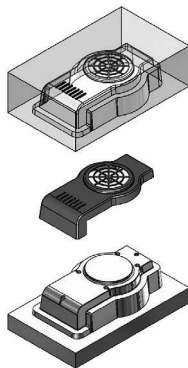


Applying the scale factor	5-9
Creating the parting lines	5-10
Adding the shut-off surfaces	5-11
Creating the parting surface	5-12
Adding a new plane	5-13
Making the mold block sketch	5-13
Creating a tooling split feature	5-14
Separating the mold blocks	5-15
Hiding the references	5-16
Renaming the solid bodies	5-17
Assigning materials	5-17
Changing the transparency	5-18



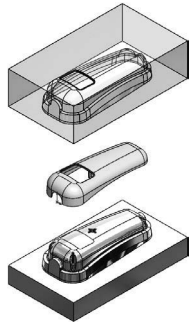
Exercise Interlock Surface 3 – Round Knob	5-19
Opening a part document	5-19
Applying the scale factor	5-19
Creating the parting lines	5-20
Creating the parting surfaces	5-21
Adding a new plane	5-22
Making the sketch of the mold block	5-22
Inserting a tooling split feature	5-23
Assigning materials	5-24

Chapter 6: Non-Planar Parting Lines 6-1



Non-Planar parting Lines – Fan Cover	6-1
Opening a part document	6-1
Applying the scale factor	6-1
Creating the parting lines	6-2
Creating the shut-off surfaces	6-3
Creating the parting surfaces	6-4
Adding a new plane	6-4
Sketching the mold block profile	6-5
Splitting the mold blocks	6-5
Hiding the references	6-6
Separating the mold blocks	6-7
Changing the transparency	6-8
Changing the materials	6-9

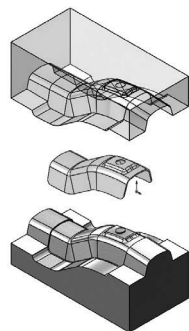
Exercise – Non-Planar Parting Lines **6-11**
Meter Reader Upper Housing



Opening a part document	6-11
Applying scale	6-11
Creating the parting lines	6-12
Creating the parting surfaces	6-13
Adding the ruled surfaces	6-14
Closing off the left end	6-15
Extending the lofted surface	6-15
Trimming the left end	6-16
Closing off the right end	6-17
Extending the lofted and ruled surfaces	6-18
Trimming the right end	6-19
Knitting all surfaces	6-20
Creating the shut off surfaces	6-21
Adding a new plane	6-21
Inserting a tooling split feature	6-22
Adjusting the block thickness	6-22
Adding an interlock surface	6-22
Separating the mold blocks	6-23
Changing materials	6-24

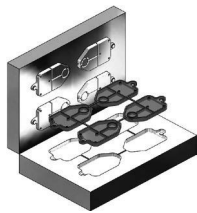
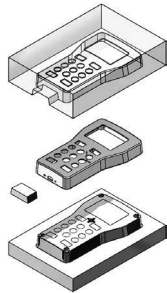
Chapter 7: Manual Parting Lines **7-1**

Manual Parting Lines - Heat Shield **7-1**



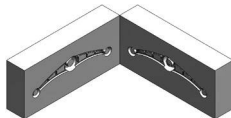
Opening a part document	7-1
Applying the scale factor	7-1
Creating the parting lines	7-2
Creating the shut-off surfaces	7-3
Creating the parting surfaces	7-4
Deleting the surfaces	7-5
Creating the ruled surfaces	7-6
Trimming with a sketch	7-7
Making a 3D sketch	7-8
Creating the 1 st corner patch	7-9
Patching over corners	7-10
Knitting the surfaces	7-11
Creating a reference plane	7-12
Creating a tooling split	7-13
Separating the mold blocks	7-14
Hiding the references	7-15
Changing the transparency	7-16

Chapter 8: Undercuts and Slide Cores 8-1



Stress Gauge Upper Housing	8-1
Opening a part document	8-1
Applying the scale factor	8-1
Creating the parting lines	8-2
Creating the shut-off surfaces	8-3
Creating the parting surfaces	8-4
Making the mold block sketch	8-5
Analyzing the undercuts	8-6
Sketching the slide core profile	8-7
Extruding the slide core block	8-8
Separating the mold blocks	8-9
Moving the slide core block	8-10
Hiding the references	8-11
Changing the transparency	8-12
Exercise: Multi-Cavity molds	8-13

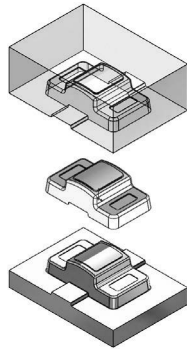
Chapter 9: Alternative Methods 9-1



Using Combine Subtract – Rocker Arm	9-1
Opening a part document	9-1
Applying the scale factor	9-1
Making the mold block sketch	9-2
Extruding the mold block	9-2
Creating a combine subtract feature	9-3
Splitting a solid body	9-4
Rotating a solid body	9-5
Using Cut with Surface – Rocker Arm	9-6
Opening a part document	9-6
Isolating the surface body	9-6
Making the mold block sketch	9-7
Converting to planar surface	9-8
Trimming the surfaces	9-9
Knitting the surfaces	9-10
Sketching the profile of the mold block	9-11
Cutting with a surface	9-12
Moving a solid body	9-13
Using the Cavity Feature in Assembly	9-14
Opening an assembly document	9-14

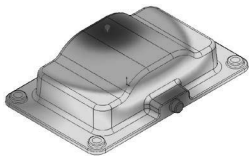
Inserting the engineered part	9-14
Editing a component	9-15
Inserting a cavity feature	9-15
Creating an exploded view	9-16

Chapter 10: Thickness Analysis 10-1



Thickness Analysis – Medication Upper Case	10-1
Opening a part document	10-1
Setting the parameters	10-1
Analyzing the thickness	10-2
Creating a section view	10-3
Re-arranging the shell feature	10-4
Scaling the part	10-5
Creating the parting lines	10-5
Creating a parting surface	10-6
Adding a new plane	10-7
Making the mold block sketch	10-7
Extruding the mold blocks	10-8
Hiding the references	10-9
Separating the mold blocks	10-10
Changing the transparency	10-11

Chapter 11: Using SOLIDWORKS Plastics 11-1



Plastics Analysis– Basin	11-1
Opening a part document	11-1
Enabling SOLIDWORKS Plastics	11-1
Creating a new study	11-2
Specifying the injection location	11-3
Creating a shell mesh	11-4
Assigning material	11-5
Running the flow analysis	11-6
Viewing the results	11-7
Viewing the report text file	11-9

Chapter 12: SOLIDWORKS Plastics Flow Analysis 12-1

Plastics – Flow Simulation Analysis	12-1
Opening a part document	12-1
Enabling Plastics	12-1

The Complete Guide to Mold Making with SOLIDWORKS 2023 | Table of Contents



Setting up the mesh	12-2
Viewing the PlasticsManager tree	12-2
Adding an injection location	12-3
Creating a mesh	12-4
Selecting a polymer	12-5
Running the flow analysis	12-6
Viewing the fill-time slot	12-7
Animating the results	12-8
Displaying the weld lines	12-9
Viewing the results	12-10

Glossary

Index

SOLIDWORKS 2023 Quick-Guides:

Quick Reference Guide to SOLIDWORKS 2023 Command Icons and Toolbars.

