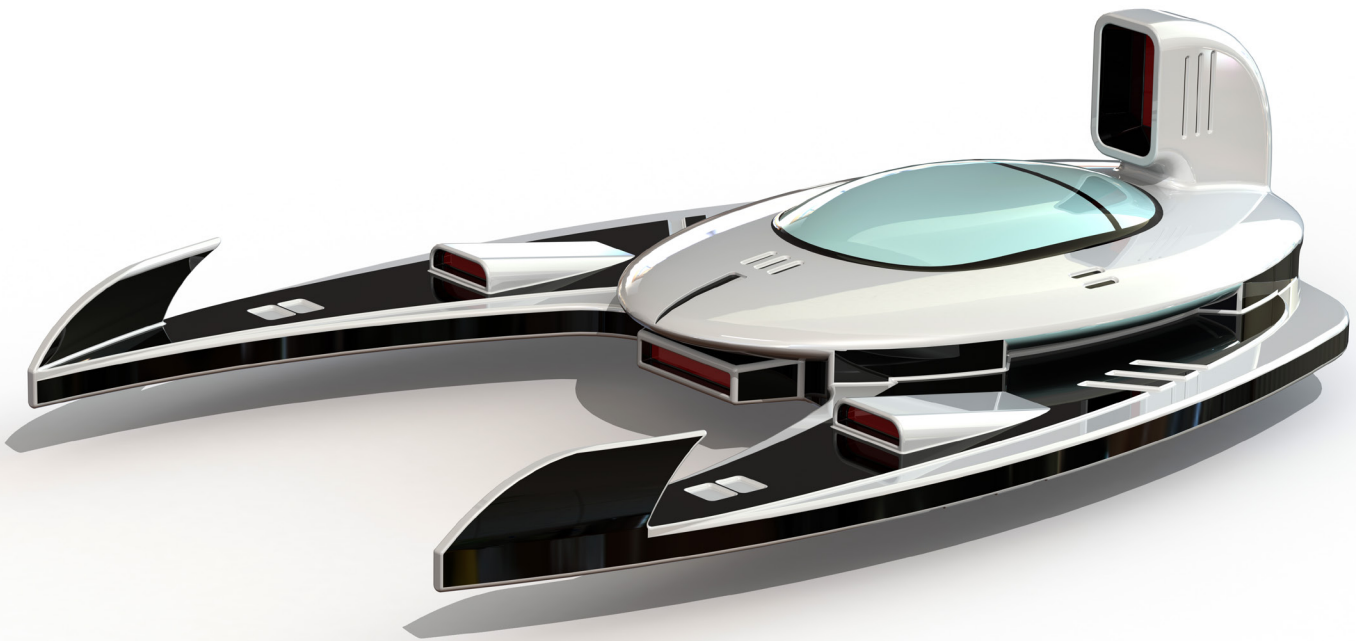


Certified SOLIDWORKS® Professional Advanced Preparation Material

Sheet Metal, Weldments, Surfacing,
Mold Making and Drawing Tools

SOLIDWORKS® 2023



Paul Tran CSWE, CSWI

Visit the following websites to learn more about this book:



[amazon.com](https://www.amazon.com)

[Google books](https://books.google.com)

[BARNES & NOBLE](https://www.barnesandnoble.com)

TABLE OF CONTENTS

CSWPA – Drawing Tools

Chapter 1: Advanced Drawing Tools 1-1



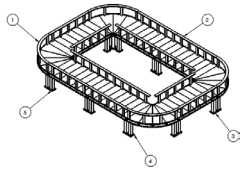
Challenge 1: Drawing Views Creation 1-3

Opening a part document: Plastic Bottle	1-3
Transferring to a drawing	1-3
Changing the paper size	1-4
Adding the drawing view	1-5
Creating a section view	1-6
Measuring the surface perimeter	1-7
Creating an aligned section view	1-7
Measuring the surface perimeter	1-9

Challenge 2: Changing View Orientation 1-10

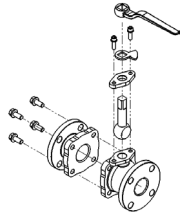


Opening an assembly document: Latch Assembly	1-10
Creating the 1 st reference sketch	1-11
Modifying the arrow keys angle	1-12
Changing the top view orientation	1-13
Creating the 2 nd reference sketch	1-13
Modifying the arrow keys angle	1-14
Changing the right view orientation	1-14
Saving a new named-view	1-15
Making a drawing from assembly	1-16
Adding the first drawing view	1-17
Creating the projected drawing views	1-18
Adding reference lines	1-19
Adding an angular dimension	1-20
Finding the value of X	1-20
Creating a section view	1-21
Finding the value of Y	1-22
Adding an alternate position view	1-23



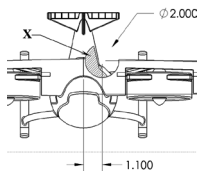
Challenge 3: Assembly Drawings 1-24

- Opening a drawing document: Deck Assembly 1-24
- Inserting the balloons 1-25
- Adding a bill of materials 1-26
- Changing custom properties 1-27
- Adding a project column 1-28
- Adding a column for cost 1-29
- Creating a linked note 1-30



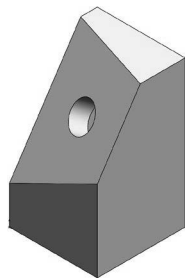
Challenge 4: Hide & Show Components 1-32

- Opening a drawing document: Water Valve Assembly 1-32
- Finding the hidden components 1-33
- Adding an angular dimension 1-34



Challenge 5: Broken Out Section Views 1-35

- Opening a drawing document: Helidrone 1-35
- Creating a broken-out section view 1-36
- Inserting the model dimensions 1-37

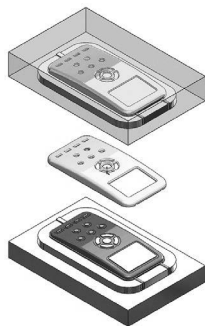


Challenge 6: Custom Drawing Views 1-38

- Opening a part document: Block 1-38
- Changing the arrow key's angle 1-38
- Changing the view orientation 1-39
- Making a drawing 1-40
- Adding a projection dimension 1-41
- Creating a section view 1-41
- Finding the surface perimeter 1-42

CSWPA – Mold Making

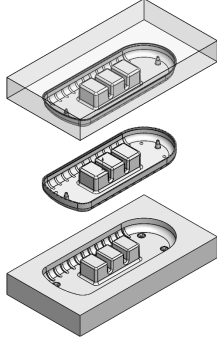
Chapter 2: Advanced Mold Making 2-1



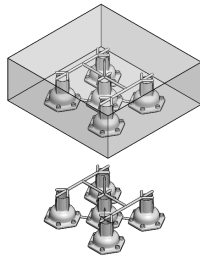
Challenge 1: Interlock Surface 2-2

- Opening a part document: Interlock Surface 2-3
- Enabling the mold tools 2-3
- Selecting the parting lines 2-4
- Creating the shut-off surfaces 2-5
- Creating the parting surfaces 2-6
- Adding a new plane 2-7
- Sketching the mold profile 2-8

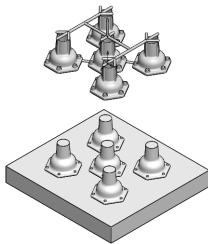
Performing a tooling split	2-9
Separating the solid bodies	2-10
Assigning materials	2-11
Calculating the mass	2-11



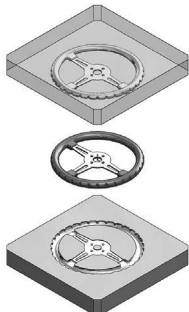
Challenge 2: Parting Lines Creation	2-13
Opening a part document: Parting Line Creation	2-14
Enabling the mold tools	2-14
Creating the parting lines	2-14
Creating the shut-off surfaces	2-15
Creating the Parting surfaces	2-16
Sketching the mold block profile	2-17
Inserting a tooling split	2-18
Separating the mold blocks	2-19
Assigning materials	2-20
Calculating the mass	2-20



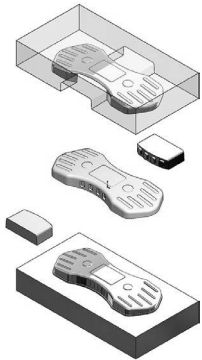
Challenge 3: Runners & Sprue	2-22
Opening a part document: Runners & Sprue	2-23
Creating the parting lines	2-23
Creating the shut-off surfaces	2-24
Creating the parting surfaces	2-25
Sketching the preliminary shape of the mold block	2-26
Inserting a tooling split	2-27
Finalizing the sketch of the lower mold block	2-28
Extruding the lower mold block	2-29
Converting a sketch	2-30
Extruding the upper mold block	2-31
Moving the cavity mold block	2-32
Measuring the distance	2-32
Copying the plastic part	2-33
Combine-Subtracting the solid bodies	2-33
Applying the shrink rate	2-34
Calculating the total mass	2-34



Challenge 4: Shut-Off Surface Creation	2-36
Opening a part document: Steering Wheel	2-37
Creating a split line	2-37
Creating the parting lines	2-39
Creating the shut-off surfaces	2-40
Measuring the surface area	2-41
Creating the parting surfaces	2-42
Inserting a tooling split	2-43

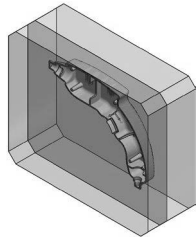


Adding chamfers	2-44
Creating an exploded view	2-45



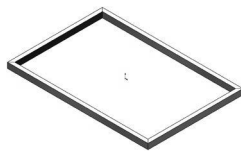
Challenge 5: Undercut Analysis	2-46
Opening a part document: Undercut Analysis	2-47
Performing an undercut analysis	2-47
Creating the parting lines	2-48
Creating the shut-off surfaces	2-49
Creating the parting surfaces	2-50
Inserting a tooling split	2-51
Adding the 1 st slide core	2-52
Adding the 2 nd slide core	2-53
Assigning material	2-54
Calculating the mass	2-54

Challenge 6: Virtual Part Creation	2-56
Opening a part document: Virtual part Creation	2-57
Hiding components	2-57
Inserting a new part	2-58
Saving the assembly	2-58
Working in the part level	2-59
Inserting the 2 nd part	2-60
Moving the solid bodies	2-61
Creating an intersect feature	2-62
Creating a combine-subtract feature	2-63
Working in the assembly level	2-64
Assigning material	2-65
Calculating the mass of the part	2-65

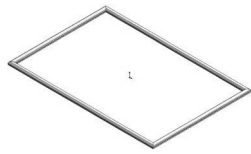


CSWPA – Weldments

Chapter 3: Advanced Weldments **3-1**

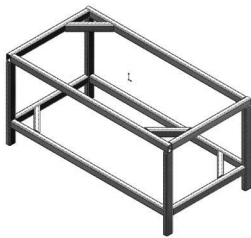


Challenge 1: Creating the Weldments profile	3-3
Starting a new part document	3-3
Enabling the Weldments tab	3-3
Sketching the first weldment profile	3-4
Saving the profile	3-4
Creating the second weldment profile	3-5
Sketching the profile	3-5
Saving the profile	3-5



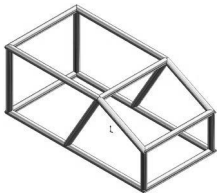
Showing the weldment profiles folder	3-6
Creating a new weldment part	3-7
Adding structural members	3-8
Applying material	3-9
Calculating the mass	3-9
Changing the structural members	3-10
Calculating the mass	3-11

Challenge 2: Weldment Frame 3.sldprt **3-12**



Opening a part document: Weldment Frame 3	3-12
Adding structural members	3-12
Adding structural members to group 2	3-13
Creating the parallel group	3-14
Trimming the parallel group	3-15
Trimming the group 2	3-16
Applying material	3-17
Calculating the mass	3-17
Creating the Upper Braces	3-18
Trimming the first Upper Brace	3-18
Trimming the second upper Braces	3-19
Updating the Cut list	3-20
Creating the Lower Braces	3-21
Trimming the Lower Braces	3-22
Adding End Caps	3-24
Calculating the final mass	3-25

Challenge 3: Weldment Frame 4.sldprt **3-26**



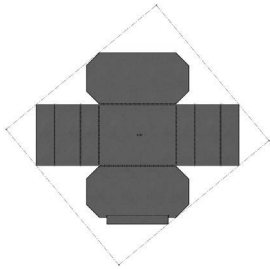
Opening a part document: Weldment Frame 4	3-26
Creating a 3D sketch	3-26
Adding structural members	3-31
Creating the parallel group	3-32
Creating the last group	3-33
Trimming the tubes	3-33

Challenge 4: Weldment Frame 5.sldprt **3-37**

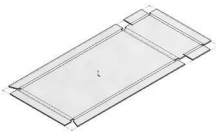
Open the document: Weldment Frame 5	3-37
Assigning material	3-37
Renaming a folder	3-38
Modifying the properties	3-38
Transferring to a drawing	3-39
Adding a drawing view	3-39
Inserting the weldment cut list	3-40
Adding balloons	3-41

CSWPA – Sheet Metal

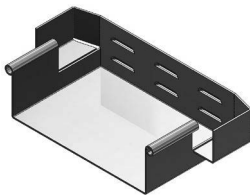
Chapter 4: Advanced Sheet Metal 4-1



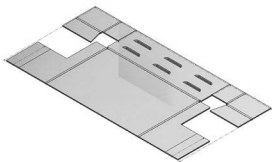
Challenge 1: Converting to Sheet Metal	4-3
Opening a part document: Convert to SM	4-3
Enabling the sheet metal tab	4-3
Making a copy of the solid model	4-3
Converting to sheet metal	4-5
Calculating the mass	4-6
Measuring the flat pattern	4-7
Creating a Hem	4-8
Calculating the mass	4-10



Challenge 2: Sheet Metal Cut List	4-11
Opening a part document: SM Cut List	4-11
Modifying the first bend radius	4-11
Measuring the flat length	4-12
Modifying the second bend radius	4-13
Measuring the flat length	4-13
Finding the Bounding Box Area	4-14



Challenge 3: Sheet Metal Part	4-15
Opening a part document: SM Part	4-15
Creating the Edge Flanges	4-15
Closing the corners	4-16
Creating a cutout	4-17
Adding a Miter Flange	4-18
Mirroring the features	4-22
Calculating the mass	4-23
Changing the K-Factor value	4-24
Measuring the flat length	4-24
Adding hems	4-25
Adding a form feature	4-26
Creating a linear pattern	4-27
Calculating the mass	4-27



CSWPA – Surfacing

Chapter 5: Advanced Surfacing 5-1



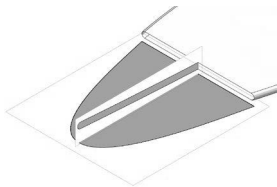
Challenge 1: Surface patch 5-3

Opening a part document: Surface Patch	5-3
Enabling the surfaces tab	5-3
Patching the first opening	5-4
Measuring the surface area	5-5
Patching the second opening	5-5
Knitting the surfaces	5-6
Creating a section view	5-6
Calculating the mass	5-7



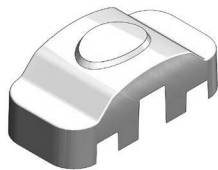
Challenge 2: Surfaces & Sketch Picture 5-8

Opening a part document: Surfaces_ Sketch Picture	5-8
Examining the sketch pictures	5-8
Creating the 1 st loft profile	5-9
Creating the 2 nd loft profile	5-10
Making the guide curve	5-11
Creating a lofted surface	5-12
Measuring the surface area	5-13
Mirroring a surface body	5-14
Knitting the surfaces	5-15
Combining the solid bodies	5-15
Assigning material	5-16
Calculating the final mass	5-16



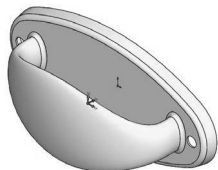
Challenge 3: Ruled Surface 5-17

Opening a part document: Ruled Surface	5-17
Creating a ruled surface	5-17
Trimming the surface bodies	5-18
Measuring the surface area	5-19



Challenge 4: Projected Curves 5-20

Opening a part document: Project Curve	5-20
Creating a projected curve	5-20
Sketching the sweep profile	5-21
Creating a swept feature	5-22
Trimming the surfaces	5-23
Knitting the surfaces	5-24



SOLIDWORKS 2023 | CSWP Advanced Preparation | Table of Contents

Adding fillets	5-24
Adding thickness	5-25
Calculating the mass	5-25



Challenge 5: Surface Split	5-26
Opening a part document: Surface Split	5-26
Creating a split line	5-26
Creating the 1 st offset surface	5-27
Creating the 2 nd offset surface	5-27
Making the 1 st lofted cut feature	5-28
Making the 2 nd lofted cut feature	5-28
Adding fillets	5-29
Shelling the solid body	5-30
Calculating the mass	5-30

Challenge 6: Boundary Surface	5-31
Opening a part document: Boundary Surface	5-31
Creating a lofted surface	5-31
Measuring the surface area	5-32
Mirroring a surface body	5-32
Mirroring a mirrored surface body	5-33
Creating the trimmed sketch	5-33
Trimming the surface bodies	5-34
Measuring the total area	5-34



Glossary Index

SOLIDWORKS 2023 Quick-Guides:

Quick Reference Guide to SOLIDWORKS 2023 Command Icons and Toolbars.

