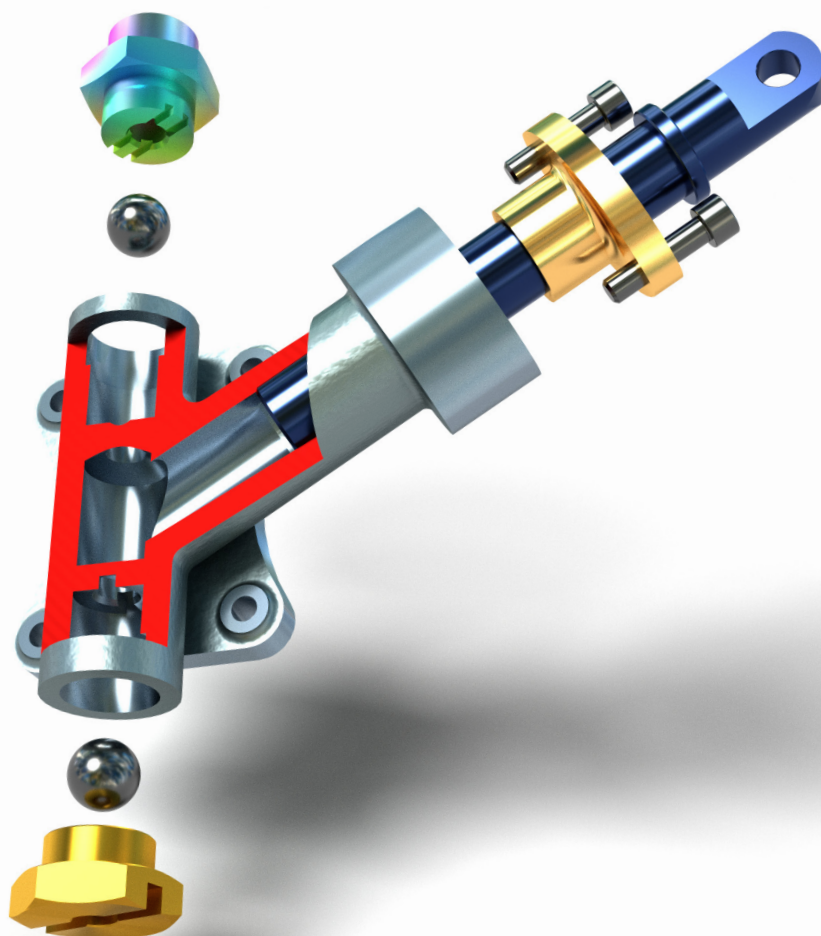


Autodesk®
Inventor® 2024
Essentials Plus



Sheila Markazi
Shawna Lockhart
Daniel T. Banach

Visit the following websites to learn more about this book:



[amazon.com](https://www.amazon.com)

[Google books](https://books.google.com)

[BARNES & NOBLE](https://www.barnesandnoble.com)

CONTENTS

1 Getting Started

1

Introduction.....	1
Objectives.....	1
Getting Started with Autodesk Inventor.....	2
User Interface.....	3
Application Menu.....	3
Quick Access Toolbar.....	3
Tabs.....	3
Panels.....	3
Commands.....	3
Information Toolbar.....	3
ViewCube.....	3
Navigation Bar.....	4
Documents Menu.....	4
Capacity Meter.....	4
Status Bar.....	4
Document Tabs.....	4
Browser.....	4
Graphics Window/Canvas.....	4
File Tab.....	5
Recent Documents.....	5
Open Documents.....	5
Display.....	5
Order to List Files.....	5
Pin to Menu.....	5
Preview Image.....	5
Ribbon.....	6
Quick Access Toolbar.....	7
Open Files.....	7
Opening Multiple Documents.....	8
Document Tabs.....	8
New Files.....	9
File Information.....	10
File Types.....	10
Part (.ipt).....	10
Assembly (.iam).....	10
Presentation (.ipn).....	10
Sheet Metal (.ipt).....	11
Drawing (.dwg and .idw).....	11
Project (.ipj).....	11
iFeature (.ide).....	11

Save File Options.....	11
Save.....	11
Save All.....	12
Save As.....	12
Save Copy As.....	12
Save Copy As Template.....	12
Pack and Go.....	12
Save Reminder.....	12
Application Options.....	12
General.....	13
Save.....	13
File.....	13
Colors.....	13
Display.....	13
Hardware.....	14
Prompts.....	14
Drawing.....	14
Notebook.....	14
Sketch.....	14
Part.....	14
iFeature.....	14
Assembly.....	14
Content Center.....	14
Exercise 1-1: User Interface.....	14
Command Entry.....	17
Tooltips.....	17
Marking Menus and Context (Overflow) Menus.....	18
Autodesk Inventor Shortcut Keys.....	18
Repeat Last Command.....	18
Undo and Redo.....	19
Help System.....	19
Projects in Autodesk Inventor.....	19
Project Setup.....	20
Project File Search Options.....	20
Creating Projects.....	20
What Type of Project Are You Creating?.....	22
New Single-User Project.....	22
New Vault Project.....	22
Creating a New Single-User Project.....	22
Autodesk Vault.....	24
Exercise 1-2: Projects.....	24
Changing your Viewpoint.....	27
Home (Isometric) View.....	27

Navigation Bar	27
ViewCube	29
Dynamically Rotate Viewpoint Shortcuts	30
Exercise 1-3: Viewing a Model	30

2 Sketching, Constraining, and Dimensioning **35**

Introduction	35
Objectives	35
Part and Sketch Application Options	36
Part Options	36
Sketch Options	37
Units	38
Templates	39
Creating a Part File	40
Creating a Part File from a Specified Template	41
Sketches and Origin (Default) Planes	41
Origin 3D Indicator	42
New Sketch	42
Sketching the 2D Outline of the Part	44
Sketching Overview	44
Sketch Commands	44
Using the Sketch Commands	44
Dimension Input	45
Line Command	45
Object Tracking – Inferred Points	46
Automatic Constraints	47
Scrubbing	47
Deleting Objects	47
Common Sketch Commands	48
Selecting Objects	49
Exercise 2-1: Creating a Sketch with Lines	50
Exercise 2-2: Creating a Sketch with Tangencies	52
Constraining A Sketch	53
Constrain to the Origin Point	53
Constraint Types	54
Adding Constraints	55
Showing Constraints	55
Modifying Constraint Size	55
Deleting Constraints	56
Hiding Constraints	56
Construction Geometry	57
Number of Required Constraints or Dimensions	58

Degrees of Freedom	58
Dragging a Sketch	58
Exercise 2-3: Adding and Displaying Constraints	59
Adding Dimensions Manually	63
Scale Sketch	63
General Dimensioning	63
Dimensioning Lines	64
Dimensioning Angles	64
Dimensioning Arcs and Circles	64
Dimensioning to a Tangent of an Arc or Circle	64
Entering and Editing a Dimension Value	65
Fractions	66
Repositioning a Dimension	66
Fully Constrained Sketch	66
Over Constrained Sketch	67
Relax Mode	67
Driven Dimension	68
Exercise 2-4: Constraining and Dimensioning a Sketch	69
Measure Command	72
Region Properties	75
Inserting an AutoCAD File	76
Inserting 2D AutoCAD Data into a Sketch	76
Insert AutoCAD File with Associativity	78
Open Other File Types	78
Exercise 2-5: Inserting AutoCAD Data	79
Applying Your Skills	83
Skills Exercise 2-1	83
Skills Exercise 2-2	83

3 Creating & Editing Sketched Features **85**

Introduction	85
Objectives	85
Features	86
Consumed and Unconsumed Sketches	86
Understanding the Browser	87
Switching Environments	88
3D Modeling Commands	88
Direct Manipulation	88
Mini-Toolbars	89
Property(ies) Panels	90

Extrude a Sketch	90	Chamfers	131
Input Geometry	91	Methods	132
Extents	92	Edge Chain	133
Advanced Properties	94	Setback	133
Exercise 3-1: Extruding a Sketch	94	Preserve All Features	134
Linear Diameter Dimensions	96	Create Partial Chamfer	134
Centerline	96	Exercise 4-1: Creating Fillets and Chamfers	135
Normal Line	97	Holes	138
Revolve a Sketch	97	Creating Hole Features	138
Input Geometry	98	Holes Dialog Box	139
Exercise 3-2: Revolving a Sketch	100	Advanced Settings	141
Primitive Shapes/Features	102	Editing Hole Features	141
Secondary 2D Sketched Features	104	Exercise 4-2: Creating Holes	142
Create a new 2D Sketch	104	Shelling	146
Select Other-Face Cycling	105	Direction	147
Slice Graphics	105	Remove Faces	147
Exercise 3-3: Sketch Features	106	Automatic Face Chain	147
Editing a Feature and Sketch	108	Solids	147
Edit Feature Command	108	Thickness	147
Editing a Feature's Sketch	109	Unique Face Thickness	148
Renaming Features and Sketches	109	Exercise 4-3: Shelling a Part	148
Deleting a Feature	110	Work Features	150
Failed Features	110	Creating a Work Axis	150
Exercise 3-4: Editing Features and Sketches	110	Exercise 4-4: Creating Work Axes	151
Projecting Geometry	112	Creating Work Points	153
Projecting Edges	112	Creating Work Planes	155
Exercise 3-5: Projecting Geometry	114	UCS—User Coordinate System	157
Part Material, Properties and Appearance	116	Feature Visibility	159
Part Material	116	Editing the UCS	159
Appearance	117	Exercise 4-5: Creating Work Planes and a UCS	160
Additional Appearance Commands	117	Exercise 4-6: Creating Holes Through Cylinders	164
Skills Exercise 3-1	120	Patterns	167
Skills Exercise 3-2	121	Rectangular Patterns	167
Skills Exercise 3-3	122	Exercise 4-7: Creating a Rectangular Pattern	170
<hr/>		Circular Patterns	171
4 Creating Placed Features	125	Exercise 4-8: Creating Circular Pattern	174
Introduction	125	Linear Patterns—Pattern along a Path	176
Objectives	125	Exercise 4-9: Creating a Pattern Along a Nonlinear Path	176
Fillets	126	3D Printing – Additive Manufacturing	178
Edge Fillet	127	Applying Your Skills	180
Face Fillet	129	Skills Exercise 4-1	180
Full Round Fillet	130	Skills Exercise 4-2	181

5 Creating & Editing Drawing Views	183	Exercise 5-6: Adding Dimensions.....	229
Introduction.....	183	Creating Baseline Dimensions	233
Objectives.....	183	Creating Chain Dimensions.....	236
Drawing Options.....	184	Exercise 5-7: Creating Baseline & Chain Dimensions	238
Creating a Drawing.....	185	Creating Ordinate Dimensions	240
Drawing Sheet Preparation	186	Adding Text and Additional Symbols	242
Border.....	187	Text and Leader Text	242
Title Block.....	188	Annotation Symbols.....	243
Edit Property Fields Dialog Box.....	189	Hole and Thread Notes.....	244
Save Drawing to a Template.....	189	Exercise 5-8: Adding Annotations	246
Creating Drawing Views	190	Creating a Hole Table.....	249
Creating a Base View	190	Exercise 5-9: Creating Hole Tables	251
Creating Projected Views	192	Shortcut for Opening Referenced Files	254
Moving Drawing Views	193	Opening a Model File from a Drawing.....	254
Drawing Zone Identifiers.....	193	Opening a Drawing from a Model File.....	255
Exercise 5-1: Creating a Multiview Drawing.....	194	Create a 3D PDF.....	255
Creating Auxiliary Views.....	197	3D Annotations / Model-Based Definition (MBD)..	257
Creating Section Views	198	Creating a 3D Annotation	257
Creating a Detail View	202	Tolerance Advisor	258
Exercise 5-2: Creating Auxiliary, Section, and Detail Views	204	Controlling Visibility of Annotations.....	258
Creating Break Views	206	Retrieving 3D Annotations in a Drawing.....	259
Exercise 5-3: Creating Break View.....	208	Applying Your Skills	260
Editing Drawing Views.....	209	Skills Exercise 5-1	260
Editing Drawing View Properties	209	Skills Exercise 5-2	261
Deleting Drawing Views.....	210		
Break and Align Views.....	210	6 Creating & Documenting Assemblies	263
Replace Model Reference.....	211	Introduction.....	263
Exercise 5-4: Editing Drawing Views.....	212	Objectives.....	263
Annotations.....	214	Assembly Options.....	264
Drawing Standards and Styles	214	Creating Assemblies.....	264
Centerlines and Center Marks.....	217	Placing Components	266
Automated Centerlines for Drawing Views	219	Placing Components from Another CAD System	268
Exercise 5-5: Adding Centerlines	220	Creating a Component in an Assembly	270
Adding Dimensions to a Drawing View.....	223	The Assembly Browser.....	271
Retrieving Model Dimensions.....	223	Occurrences	271
Selecting Dimensions – Additional Options	225	The Assembly Capacity Meter.....	272
Auto Arrange Dimensions.....	226	Editing a Component in Place	272
Moving and Centering Dimension Text.....	226	Opening a Component in an Assembly	273
Editing a Model Dimension's Value in a Drawing.....	226	Grounded Component.....	274
Creating General Dimensions	227	Degrees of Freedom (DOF).....	274

Adding Assembly Constraints.....	275	Exercise 6-6: Driving a Constraint.....	316
Assembly Constraint Command.....	275	Creating a Presentation File.....	319
Constraint Limits.....	277	Creating Presentation Views and Snapshots.....	320
Assembly Constraint Examples.....	277	Tweak Components.....	322
Motion Constraints.....	280	Capture Camera Viewpoint.....	324
Transitional Constraint.....	281	Play the Animation.....	325
Constraint Set Constraint.....	282	Create a New Storyboard.....	325
Selecting Geometry and the Select Other Command.....	282	Publish a Video from a Storyboard.....	325
Applying an Assembly Constraint.....	283	Snapshot View.....	326
ALT + Drag Constraining Technique.....	283	Create a Drawing from a Snapshot View.....	327
Moving and Rotating Components.....	283	Publish a Raster Image from a Snapshot View.....	328
Free Move.....	283	Exercise 6-7: Creating a Presentation Storyboard..	329
Free Rotate.....	284	Creating Drawing Views from Assemblies & Presentations.....	334
Editing Assembly Constraints.....	285	Bill of Material (BOM).....	334
Identify under-constrained components.....	286	Sorting Items in the BOM.....	335
Exercise 6-1: Assembling Parts.....	288	Renumbering Items in the BOM.....	336
Assembly Joints.....	293	Adding Columns to the BOM.....	336
Creating an Assembly Joint.....	294	Changing the View Options of the BOM.....	336
Tips for using the joint command.....	296	Opening a Part from the BOM Editor.....	337
Exercise 6-2: Assembly Joints.....	296	Exercise 6-8: Editing a Bill of Material (BOM)...	337
Additional Assembly Commands.....	298	Creating Balloons.....	340
Browser Views.....	298	Placing Individual Balloons.....	340
Other Half.....	299	Auto Ballooning.....	342
Constraint Tooltip.....	300	Moving and Aligning Balloons.....	343
User-Defined Assembly Folders.....	300	Editing a Balloon's Value.....	344
Isolating Assembly Components.....	300	Parts List.....	345
Visibility Control.....	301	Editing a Parts List.....	345
Adaptivity.....	301	Editing Parts List BOM Data.....	346
Project Geometry in the Context of an Assembly.....	302	Creating Custom Parts.....	347
Creating an Adaptive Sketch/Part Manually.....	302	Wrapping a Parts List.....	347
Exercise 6-3: Designing a Part in Context of an Assembly.....	303	Exercise 6-9: Creating a Drawing from an Assembly.....	348
Patterning Components.....	306	Applying Your Skills.....	357
Associative Pattern.....	306	Skills Exercise 6-1.....	357
Rectangular Pattern.....	307	Skills Exercise 6-2.....	359
Circular Pattern.....	308		
Exercise 6-4: Patterning Components.....	309	<hr/> 7 Advanced Modeling Techniques <hr/>	363
Analysis Commands.....	311	Introduction.....	363
Measure Distance.....	311	Objectives.....	363
Identifying the Center of Gravity of an Assembly.....	311	Dimension Display, Relationships, and Equations .	364
Interference Checking.....	312	Dimension Display.....	364
Exercise 6-5: Analyzing an Assembly.....	313	A Dimension's Relationship.....	364
Driving a Constraint.....	315	Equations.....	365

Parameters	365	Split a Part or Face.....	438
Creating Parameters	366	Behavior	439
Creating User Parameters.....	367	Exercise 7-8: Splitting a Part into	
Creating Linked Parameters.....	368	Multiple Solid Bodies	439
Exercise 7-1: Relationships and Parameters ...	370	Mirror Features	441
iParts	375	Suppressing Features	443
Creating an iPart.....	376	Reordering a Feature	443
Editing iParts	380	Feature Rollback	444
Placing an iPart Member into an Assembly.....	380	Content Center	445
Creating a Drawing for an iPart Factory	381	Introduction to Stress Analysis	446
Exercise 7-2: Creating and Placing an iPart.....	383	Create a Simulation Study – Step 1	447
iAssemblies	389	Assign Material – Step 2.....	448
iAssembly Author Dialog Box Options	390	Applying Constraints – Step 3	448
Editing iAssemblies	391	Applying a Load – Step 4	449
Placing an iAssembly member into an Assembly	392	Mesh Options – Step 5	451
Creating a drawing for an iAssembly factory.....	392	Run Simulation – Step 6.....	451
Exercise 7-3: Creating and Placing an iAssembly..	394	Review Simulation Results – Step 7.....	452
Sectioning a Part or Components in an Assembly .	398	Display Results – Step 8	452
Design View Representations in a Part		Animate or Probe Results.....	453
or an Assembly File	399	Report.....	454
Emboss Text and Closed Profiles	400	Exercise 7-9: Run a Stress Analysis on a Part..	454
Exercise 7-4: Creating Text and Emboss Features .	403	Exercise 7-10: Run a Stress Analysis on	
Sweep Features	407	an Assembly	457
The Sweep Dialog Box	407	The Frame Generator.....	461
Creating a Sweep Feature Using a Profile	410	Exercise 7-11: Creating a Frame.....	465
Exercise 7-5: Creating Sweep Features.....	410	Applying Your Skills	472
3D Sketching	413	Skill Exercise 7-1	472
3D Sketch Overview	413	Checking Your Skills	473
3D Sketch Environment.....	413		
3D Sketch from Intersecting Geometry	413		
Project to Surface	414		
Project to a 3D Sketch.....	415		
3D Lines	416		
Create a 3D Sweep	417		
Import Points	417		
Exercise 7-6: 3D Sketch & Sweep Features	419		
Coil Features	423		
Input Geometry.....	423		
Behavior	424		
Output.....	425		
Loft Features	426		
Create a Loft.....	426		
Exercise 7-7: Creating a Loft Feature.....	432		
Freeform Modeling	436		
		8 Introduction to Sheet Metal Design	475
		Introduction.....	475
		Objectives.....	475
		Sheet Metal Design	476
		Creating a Sheet Metal Part	476
		Convert a Regular Part File to a Sheet Metal Part.....	476
		Sheet Metal Environment	476
		Adding Features from the 3D Model Tab.....	477
		Sheet Metal Parameters.....	477
		Sheet Metal Defaults, Rules and Styles	477
		Sheet Metal Defaults	477
		Sheet Metal Rules and Styles	478
		Sheet Metal Unfold Rule.....	482
		Exercise 8-1: Editing a Sheet Metal Style and Rule...	483

Face.....	486
Unfold Options and Bend Tabs.....	487
Contour Flange.....	487
Width Extents	488
Unfold Options and Bend Tabs.....	489
Flange.....	490
Unfold Options and Bend Tabs.....	491
Exercise 8-2: Creating Sheet Metal Parts	492
Hem.....	496
Shape Tab.....	497
Unfold Options and Bend Tabs.....	497
Bend	497
Shape Tab.....	499
Unfold Options and Bend Tabs.....	499
Edit a Bend	499
Cut.....	500
Fold.....	501
Shape Tab.....	502
Unfold Options and Bend Tabs.....	503
Corner Round	503
Corner Chamfer.....	503
Exercise 8-3: Creating Bend, Cut, Hem and Fold Features	504
Flat Pattern	510
Define A-Side.....	510
Create Flat Pattern	510
Flat Pattern Environment.....	511
Flat Pattern Definition and Extents	511
Export a Flat Pattern.....	512
Detailing Sheet Metal Parts	512
Exercise 8-4: Flattening & Documenting Sheet Metal Parts	513
Applying Your Skills	517
Skill Exercise 8-1	517