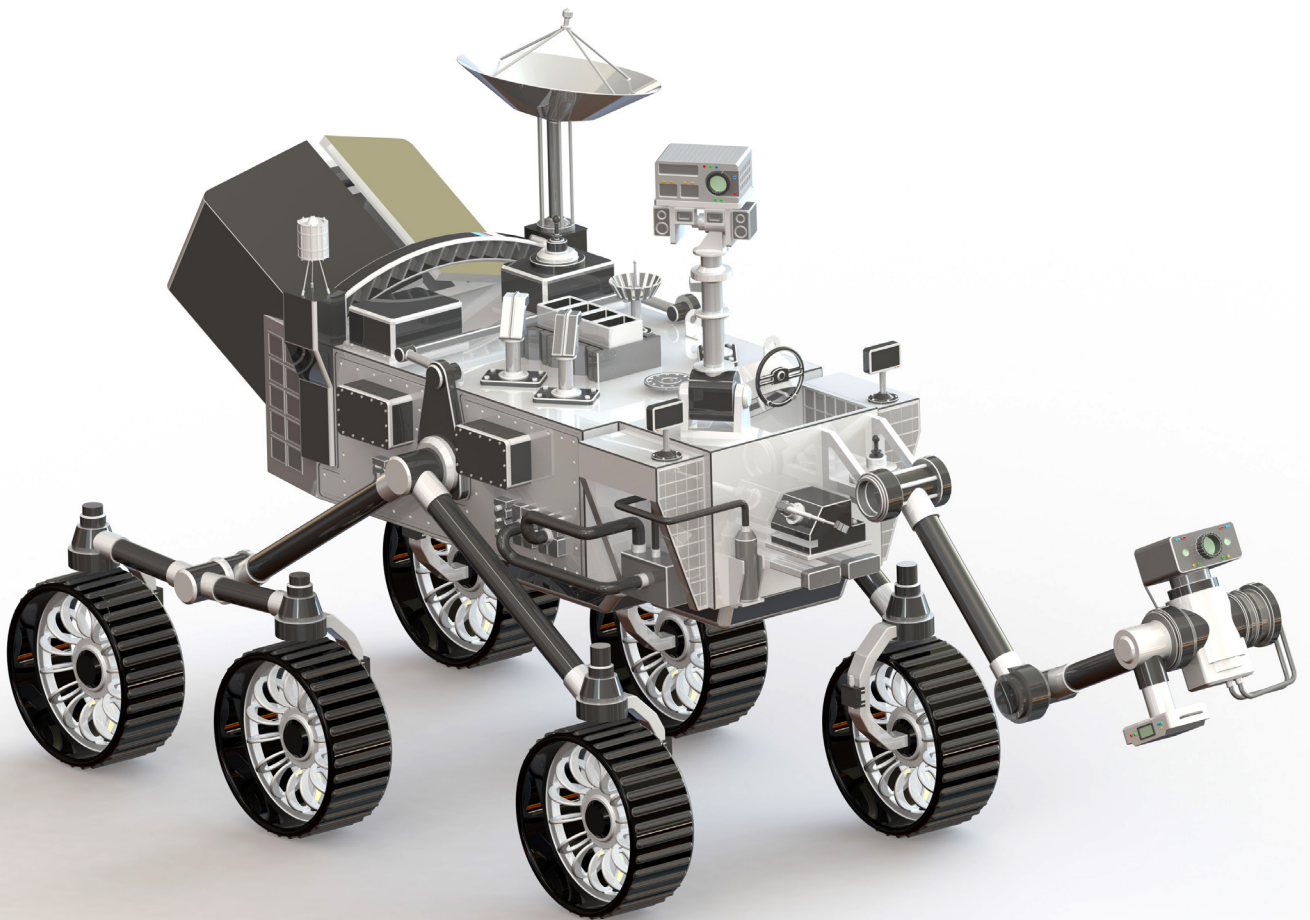


SOLIDWORKS® 2024 Basic Tools

Getting Started with Parts,
Assemblies and Drawings



Paul Tran CSWE, CSWI

Visit the following websites to learn more about this book:



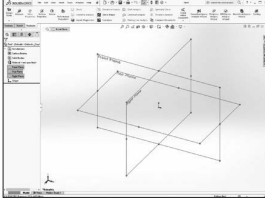
[amazon.com](https://www.amazon.com)

[Google books](https://books.google.com)

[BARNES & NOBLE](https://www.barnesandnoble.com)

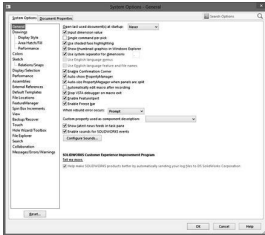
Table of Contents

Introduction:	SOLIDWORKS 2024 User Interface	XXI
	The 3 reference planes	XXII
	The toolbars	XXII
	The system feedback symbols	XXIV
	The status bar	XXIV
	2D sketch examples	XXV
	3D feature examples	XXVI



Setting the System Parameters

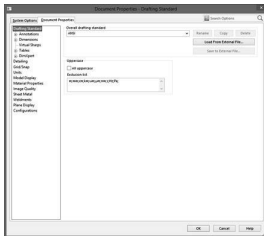
Chapter 1:	System Options	1-1
	Setting up the system options	1-1
	The general options	1-2
	The drawings options	1-3
	The display style options	1-3
	The area hatch/fill options	1-4
	The performance options	1-4
	The colors options	1-5
	The sketch options	1-5
	The relations / snaps options	1-6
	The display options	1-6
	The selection options	1-7
	The performance options	1-7
	The assemblies options	1-8
	The external references options	1-8
	The default templates options	1-9
	The file locations options	1-9
	The feature manager options	1-10
	The spin box increments options	1-10
	The view options	1-11
	The backups / recover options	1-11
	The touch options	1-12
	The hole wizards / toolbox options	1-12
	The file explorer options	1-13
	The search options	1-13
	The collaboration options	1-14
	The messages/errors/warnings options	1-14



The import options	1-15
The export options	1-15
Questions for review	1-16

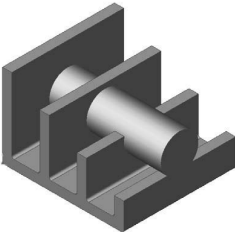
Chapter 2: Document Templates 2-1

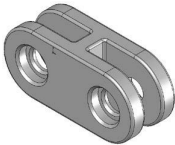
Setting up the Document Properties	2-1
The drafting standard options	2-2
The annotations options	2-2
The balloon options	2-3
The datum options	2-3
The geometric tolerance options	2-4
The note options	2-4
The revision clouds options	2-5
The surface finishes options	2-5
The weld symbol options	2-6
The dimensions options	2-6
The angle options	2-7
The angular running options	2-7
The arc length options	2-8
The chamfer options	2-8
The diameter options	2-9
The hole callout options	2-9
The linear options	2-10
The ordinate options	2-10
The radius options	2-11
The virtual sharps options	2-11
The tables options	2-12
The bill of materials options	2-13
The general options	2-13
The title block table options	2-14
The DimXpert options	2-14
The size dimension options	2-15
The location dimension options	2-15
The chain dimension options	2-16
The geometric tolerance options	2-16
The chamfer controls options	2-17
The display options	2-17
The detailing options	2-18
The grid / snap options	2-18
The units options	2-19
The model display options	2-19
The material properties options	2-20
The image quality options	2-20



The sheet metal options	2-21
The weldments options	2-22
The plane display options	2-22
The configurations options	2-23
Saving the settings in a part template	2-23
Questions for review	2-24

Basic Modeling Topics

	Chapter 3: Basic Solid Modeling – Extrude Options	3-1
	Tools needed	3-2
	Starting a new part	3-4
	Changing the scene	3-5
	Starting a new sketch	3-6
	Using the Click + Hold + Drag Technique	3-9
	Adding geometric relations	3-10
	Adding a collinear relation	3-11
	Geometric relations examples	3-12
	Adding the horizontal dimensions	3-13
	Adding the vertical dimensions	3-14
	The status of a sketch	3-14
	Hiding the sketch relation symbols	3-15
	Extruding the base	3-16
	Sketching on a planar face	3-17
	Using the Trim Entities command	3-19
	Extruding a boss	3-20
	Extrude summary	3-24
	Adding the model fillets	3-25
	Questions for review	3-27
Using the search commands	3-28	
Exercise 1: Extrude Boss & Hole Wizard	3-32	
Exercise 2: Extrude Boss & Extrude Cut	3-35	

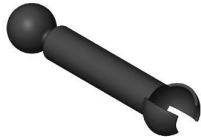
	Chapter 4: Basic Solid Modeling – Extrude and Revolve	4-1
	Link Components	4-2
	Tools needed	4-2
	Sketching the first profile	4-3
	Extruding the first solid	4-3
	Creating the bore holes	4-4
	Cutting the bore holes	4-5



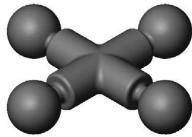
Mirroring the bore holes	4-6
Extruding a Through All cut	4-8
Adding fillets	4-8
Creating the sub-components	4-10
Revolving the base feature	4-10
Adding chamfers	4-11
Extruding the base	4-15
Sketching the Recess Profiles	4-15
Extruding a blind cut	4-16
Mirroring the cut	4-16
Adding holes	4-17
Adding more fillets	4-18
Questions for review	4-20
Exercise: Extrude Boss & Extrude Cut	4-21

Chapter 5:

Revolved Parts 5-1



Ball Joint Arm	5-1
Tools needed	5-2
Creating the base profile	5-3
Revolving the base feature	5-4
Sketching the opened-end profile	5-4
Revolving the opened-end feature	5-5
Mirroring the revolved feature	5-6
Adding fillets	5-6
Questions for review	5-8
Exercise: Flat Head Screwdriver	5-9



Derived Sketches 5-12

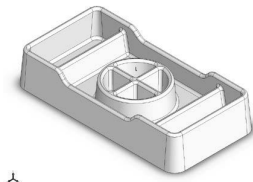
Center Ball Joint	5-12
Tools needed	5-13
Creating the base profile	5-14
Revolving the base profile	5-14
Creating a new work plane	5-15
Creating a derived sketch	5-15
Positioning the derived sketch	5-16
Adding fillets	5-17
Questions for review	5-18
Exercise: Revolve Parts - Wheel	5-19
Exercise: Plastic bottle	5-21



Chapter 6:

Rib & Shell Features 6-1

Plastic Tray	6-1
Tools needed	6-2



Sketching the base profile	6-3
Extruding the base feature	6-3
Adding the side cutouts	6-4
Removing more material	6-5
Creating the rib profiles	6-6
Adding fillets	6-7
Shelling the lower portion	6-8
Questions for review	6-9

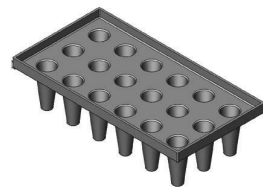
Shell & Mirror Features - Styrofoam Box **6-10**



Tools needed	6-11
Starting a new part	6-12
Extruding the base	6-12
Adding fillets	6-13
Creating an offset sketch	6-14
Creating a recess	6-14
Creating the rim	6-16
Creating the fold feature	6-17
Mirroring the solid body	6-18
Creating the lock feature	6-19
Creating the lock cavity	6-20
Shelling the part	6-22
Questions for review	6-25

Chapter 7:

Patterns **7-1**



Linear Patterns – Test Tray	7-1
Tools needed	7-2
Sketching the base profile	7-3
Extruding the base feature	7-3
Sketching the seed feature	7-4
Extruding a seed feature	7-4
Creating a linear pattern	7-5
Shelling the base feature	7-6
Adding fillets	7-7
Questions for review	7-8

Circular Patterns – Spur Gear **7-9**



Tools needed	7-10
Sketching the body profile	7-11
Using the dynamic mirror	7-11
Revolving the base body	7-13
Sketching the thread profile	7-14
Converting the entities	7-15



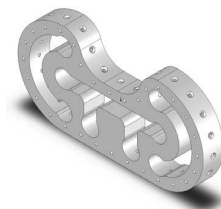
Trimming the sketch entities	7-16
Adding dimensions	7-16
Cutting the first tooth	7-17
Circular patterning the tooth	7-17
Adding the keyway	7-19
Extruding a cut	7-20
Questions for review	7-22

Circular Patterns – Circular Base Mount **7-23**



Tools needed	7-24
Creating the base sketch	7-25
Revolving the base feature	7-25
Creating the first side-tab sketch	7-26
Extruding the side-tab	7-26
Adding a counterbore hole	7-27
Creating the circular pattern	7-28
Creating a new plane	7-28
Creating the pocket sketch	7-29
Adding fillets	7-30
Questions for review	7-32

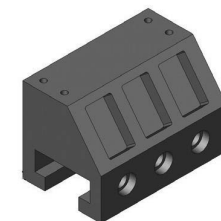
Curve Driven Pattern and Hole Wizard **7-35**



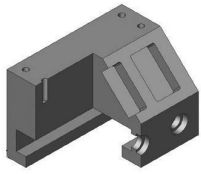
Tools needed	7-36
Opening the existing file	7-37
Extruding the base	7-38
Creating the sketch for the first hole	7-38
Constructing the curve-sketch	7-39
Creating the first curve driven pattern	7-40
Adding the hole wizard	7-41
Creating the second curve driven pattern	7-42

Chapter 8: Part Configurations **8-1**

Machined Block **8-1**



Tools needed	8-2
Sketching the base profile	8-3
Extruding the base feature	8-3
Creating the pocket profiles	8-4
Adding a counterbore	8-5
Patterning the counterbore	8-6
Creating the mirror-plane	8-6
Mirroring the counterbores	8-7
Creating the blind holes	8-8
Creating a cutaway section	8-9



Sketching a profile for the cut	8-10
Creating the section cut	8-11
Switching between the configurations	8-12
Splitting the FeatureManager pane	8-13
Creating a new configuration	8-13
Questions for Review	8-16
Exercise 1: Using Vary-Sketch	8-17
Exercise 2: Using Vary-Sketch	8-20

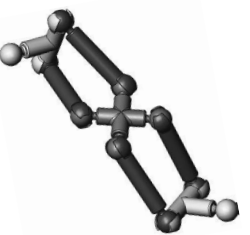
Chapter 9: Modeling Threads



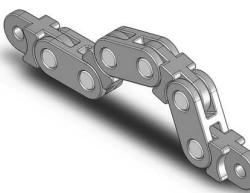
Threaded Insert	9-1
Tools needed	9-1
Sketching the base profile	9-2
Revolving the base feature	9-3
Creating the right-hand threads	9-4
Using the Mirror bodies option	9-4
Adding chamfers	9-7
Questions for review	9-8
Exercise: Modeling threads - Internal	9-9
Exercise: Internal threads	9-10
Exercise: External threads	9-14
Exercise: Creating Threads – Automatic vs. Manual	9-22
	9-28

Bottom-Up Assembly Topics

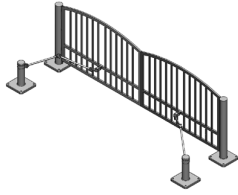
Chapter 10: Bottom Up Assembly



Ball Joint Assembly	10-1
Tools needed	10-1
Starting a new assembly template	10-2
Inserting the components	10-3
Mating the components	10-4
Moving the component	10-6
Inserting another instance	10-7
Constraining the components	10-7
Questions for review	10-8
	10-11

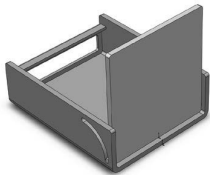


Bottom Up Assembly – Links Assembly	10-12
Tools needed	10-13
Starting a new assembly template	10-13
Placing the first component	10-14
Adding other components	10-15
	10-16



Changing colors	10-17
Inserting the single link into the assembly	10-18
Using the selection filters	10-18
Adding mates	10-19
Adding a width mate	10-20
Making copies of the component	10-21
Inserting other components into the assembly	10-23
Rotating the pin head	10-23
Constraining the alignment pin	10-24
Constraining the pin head	10-25
Using the align & anti-align options	10-27
Questions for review	10-29
Exercise: Gate Assembly	10-30

Chapter 11: Using Advanced Mates **11-1**



Rack and Pinion	11-1
Open an assembly document	11-2
Adding standard mates	11-3
Suppressing a mate	11-4
Adding a mechanical mate	11-4
Testing the mates	11-5
Creating a linear motion	11-5

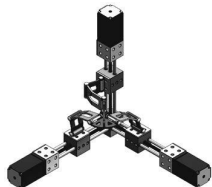


Limit & Cam Mates	11-8
Opening a part file	11-8
Adding a width mate	11-9
Adding a cam mate	11-10
Adding a parallel mate	11-12
Adding a limit mate	11-13
Exercise: Cam Followers	11-16
Questions for review	11-20
Exercise: Using Gear Mates	11-21
Exercise: Using Limit Mates	11-25
Exercise: Bottom up assembly	11-27



Level 1 Final Exam: Assembly Motions **11-33**

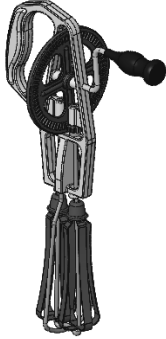
Chapter 12: Kinematics – Assembly Motions **12-1**



Assembly Motions	12-2
Tools Needed	12-2
Opening an assembly document	12-3
Constraining the link_center	12-4
Mating the 1 st long pin	12-5



Mating the last 2 pins	12-6
Testing the kinematics motions	12-6
Saving your work	12-8
Exercise: Oscillating Mechanism	12-9

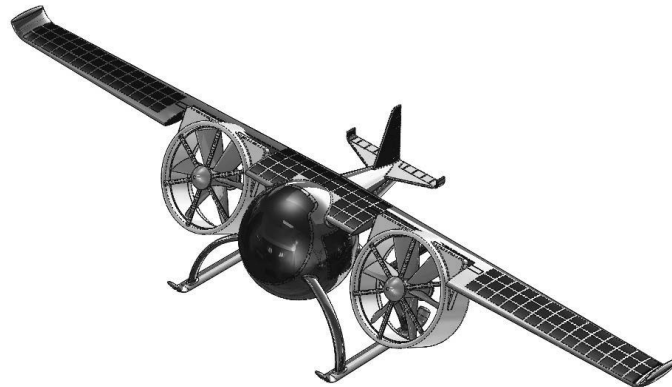


SOLIDWORKS Animator – The Basics	12-15
Opening an existing assembly document	12-15
Adding a rotary motor	12-16
Viewing the rotary motions	12-17
Using the animation wizard	12-17
Animating the explode of an assembly	12-19
Animating the collapse of the assembly	12-20
Changing the view orientation of the assembly	12-22
Creating the flashing effects	12-25
Looping the animation	12-28
Saving the animation as AVI	12-29
Viewing the AVI with Windows Media Player	12-30

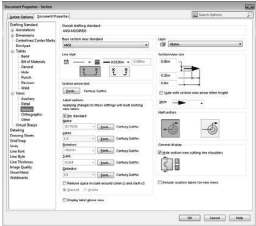
Chapter 13:

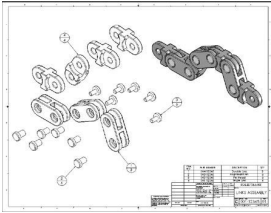


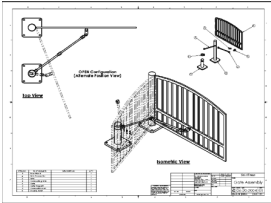
Rendering with SOLIDWORKS Visualize	13-1
Launching the Visualize application	13-1
Opening a SOLIDWORKS document	13-2
Applying appearances	13-3
Applying environments (scenes)	13-5
Adjusting the brightness	13-7
Rendering the image	13-8
Exercise: HeliDrone Assembly	13-12
Applying appearances	13-13
Applying Environments	13-14
Rendering the image	13-15



Drawing Topics

	Chapter 14: Drawing Preparations	14-1
	Customizing the Document Template	14-1
	Tools needed	14-2
	Setting up new drawing	14-3
	Switching to the sheet format layer	14-5
	Switching back to the sheet layer	14-6
	Setting up the drawing options	14-7
	Setting up the document template options	14-8
	Saving the document template	14-16
	Questions for review	14-17

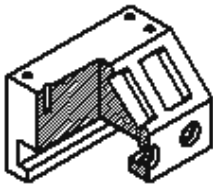
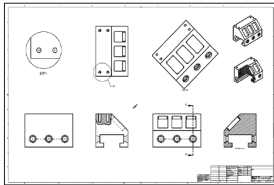
	Chapter 15: Assembly Drawings	15-1
	Links Assembly	15-2
	Tools needed	15-2
	Creating a new drawing	15-3
	Editing the sheet format	15-6
	Setting up the B.O.M. anchor point	15-6
	Switching back to the sheet layer	15-7
	Opening an existing assembly document	15-8
	Switching to the exploded view state	15-10
	Changing the line style	15-11
	Using the view palette	15-12
	Switching to shaded view	15-13
	Adding the bill of material (B.O.M.) to the drawing	15-13
	Selecting the B.O.M. options	15-14
	Creating the custom Properties	15-15
	Modifying the B.O.M.	15-17
	Reversing the table header	15-19
	Adding balloon callouts	15-20
	Changing the balloon style	15-21
	Questions for review	15-22
Exercise: Assembly Drawings	15-23	

	Alternate Position Views	15-26
	Tools needed	15-27
	Creating a new drawing	15-28
	Creating the isometric drawing view	15-29
	Changing the drawing view scale	15-30
	Creating an alternate position drawing view	15-31

Adding the top drawing view	15-32
Adding text / annotations	15-34
Creating an exploded isometric view	15-35
Adding auto-balloons to the exploded view	15-36
Adding the bill of materials	15-37
Questions for review	15-38

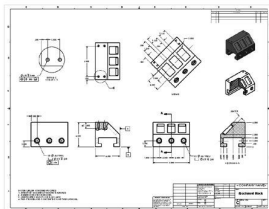
Chapter 16: Drawing Views 16-1

Machined Block	16-1
Tools needed	16-2
Creating a new drawing	16-3
Editing the sheet format	16-4
Modifying the existing text	16-6
Adding the title of the drawing	16-6
Using the view palette	16-7
Adding an isometric view	16-9
Moving the drawing views	16-10
Breaking the alignments between the views	16-11
Creating a detail view	16-12
Using the detail view options	16-12
Creating a projected view	16-13
Creating an auxiliary view	16-14
Creating a section view	16-15
Showing the hidden lines in a drawing view	16-16
Creating a broken-out-section	16-16
Adding a cutaway view	16-17
Changing configurations	16-18
Adding crosshatch to the sectioned surfaces	16-19
Modifying the crosshatch properties	16-20
Geometric tolerance & flag notes	16-22
Modifying & hole symbols	16-23
ANSI symbol descriptions	16-24



Chapter 17: Detailing a Drawing 17-1

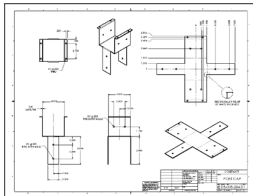
Machined Block	17-2
Tools needed	17-2
Opening a drawing document	17-3
Inserting dimensions from the model	17-3
Re-arranging the new dimensions	17-4
Inserting dimensions to the section view	17-4
Adding dimensions to the auxiliary view	17-6
Adding the center marks	17-6



Adding the datum feature symbols	17-7
Datum reference & geometric tolerance examples	17-8
Adding the hole specifications using the hole-callout	17-9
Adding geometric tolerances	17-9
Align the geometric tolerance	17-11
Attaching the geometric tolerance to the driving dimension	17-12
Adding tolerances / precision to dimensions	17-13
Adding symmetric tolerance to a dimension	17-14
Adding surface finish callouts	17-14
Adding non-parametric callouts	17-16
Inserting notes	17-16
Changing the document's font	17-17
Questions for review	17-19
Exercise: Detailing I	17-20
Exercise: Detailing II	17-21
Fastener Callouts	17-22
Thread Nomenclature	17-23
Attaching a note or a symbol to a dimension	17-24

Chapter 18: Sheet Metal Drawings 18-1

Post Cap	18-1
Tools needed	18-2
Starting a new drawing	18-3
Creating the 3 standard views	18-4
Rearranging the drawing views	18-5
Creating the flat pattern drawing view	18-5
Creating a detail view	18-6
Adding the ordinate dimensions	18-6
Adding the model dimensions	18-7
Creating the isometric flat pattern view	18-9
Showing / hiding the bend lines	18-10
SOLIDWORKS eDrawing & 3D Drawing View	18-11
SOLIDWORKS 2024 – 3D Drawing View	18-20
Reorienting views	18-23



Chapter 19: Configurations 19-1

Part I: Part, Assembly & Drawing	19-1
Tools needed	19-2
Opening an assembly document	19-3
Using configurations in the part mode	19-3
Changing the pitch	19-4
Creating an assembly configuration	19-5





Changing the mate conditions	19-5
Adding new mates	19-6
Changing configuration	19-6
Using configurations in a drawing	19-7
Changing the configuration of a drawing view	19-8

Part II: Part, Assembly & Drawing 19-9

Tools needed	19-10
--------------	-------

Part Configurations	19-11
---------------------	-------

Opening a part document	19-11
-------------------------	-------

Creating a new configuration	19-11
------------------------------	-------

Changing the number of the spokes	19-12
-----------------------------------	-------

Viewing the configurations	19-13
----------------------------	-------

Assembly configurations	19-14
-------------------------	-------

Starting a new assembly	19-14
-------------------------	-------

Inserting the Sub-Assembly	19-15
----------------------------	-------

Mating the sub-assembly	19-16
-------------------------	-------

Viewing the assembly configurations	19-18
-------------------------------------	-------

Drawing Configurations	19-19
------------------------	-------

Creating an assembly drawing	19-19
------------------------------	-------

Creating the standard drawing views	19-20
-------------------------------------	-------

Auto start the projected view	19-21
-------------------------------	-------

Creating the aligned section view	19-21
-----------------------------------	-------

Creating the isometric view	19-22
-----------------------------	-------

Displaying the exploded view	19-23
------------------------------	-------

Changing configurations	19-24
-------------------------	-------

Adding annotations	19-24
--------------------	-------



Chapter 20: Design Tables 20-1

Tools needed	20-2
--------------	------

Copying a part document	20-3
-------------------------	------

Creating a new design table	20-4
-----------------------------	------

Transferring the dimensions to the design table	20-5
---	------

Using Excel's addition formula	20-5
--------------------------------	------

Controlling the suppression-states of the holes	20-7
---	------

Viewing the configurations generated by the design table	20-8
--	------



Assembly – Design Tables 20-9

Copying the eggbeater assembly	20-9
--------------------------------	------

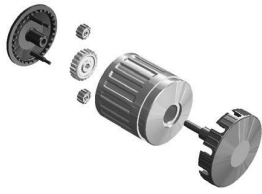
Creating a new assembly design table	20-10
--------------------------------------	-------

Defining the column headers	20-11
-----------------------------	-------

Inserting the control parameters	20-12
----------------------------------	-------

Adding the configuration names	20-13
--------------------------------	-------



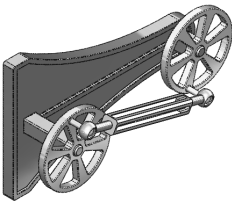


Assigning the control values	20-13
Viewing the new configurations	20-14
Exercise: Part design tables	20-15

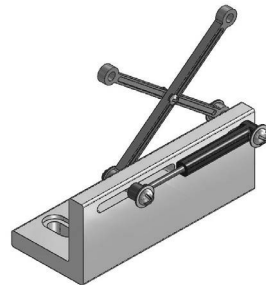
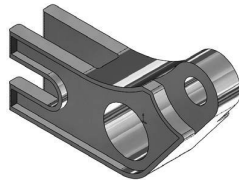
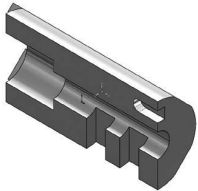
Level 2 Final Exam **20-19**

Table of U.S. Measures	20-21
Table of Metric Measures	20-22

CSWA Preparation Materials (Certified SOLIDWORKS Associate)



Preparation materials for the CSWA examination	21-1
Drafting competencies	21-3
Basic Part Modeling	21-6
Bottom Up Assembly 1	21-30
Bottom Up Assembly 2	21-42



Glossary
Index

SOLIDWORKS 2024 Quick-Guides:

Quick Reference Guide to SOLIDWORKS 2024 Command Icons and Toolbars.

