

SOLIDWORKS® 2024 Intermediate Skills

Expanding on Solids, Surfaces, Multibodies,
Configurations, Drawings, Sheet Metal
and Assemblies



Paul Tran CSWE, CSWI

Visit the following websites to learn more about this book:



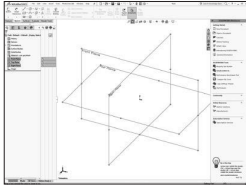
[amazon.com](https://www.amazon.com)

[Google books](https://books.google.com)

[BARNES & NOBLE](https://www.barnesandnoble.com)

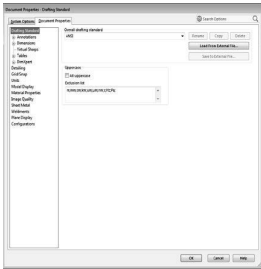
TABLE OF CONTENTS

Introduction: SOLIDWORKS 2024 User Interface **20**



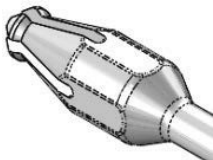
- The 3 reference planes 21
- The toolbars 21
- The system feedback symbols 23
- The status bar 23
- 2D sketch examples 24
- 3D feature examples 25

Chapter 1: Document Properties **1-1**



- Setting up the Document Template** 1-1
- Different standards in the world 1-2
- Starting a new part document 1-3
- Setting the ANSI drafting standards 1-3
 - Setting the dimension options 1-4
 - Setting the virtual sharp options 1-5
 - Setting the units options 1-5
 - Setting the image quality options 1-6
- Saving the settings as a Part Template 1-6
- Customizing Keyboard Shortcuts 1-7
- Customizing Tool Buttons 1-12

Chapter 2: Sketching Skills **2-1**

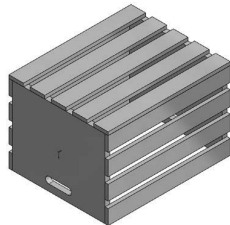
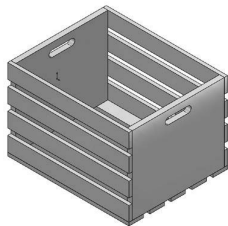


- Handle** 2-1
- Tools Needed 2-2
- Starting a new part document 2-3
- Changing the System Options 2-3
- Creating the Parent Sketch 2-4
 - Revolving the parent sketch 2-7
- Adding the tip detail 2-7
 - Revolving the sketch 2-8
 - Transitioning from line-to-arc 2-8
 - Mirroring in sketch mode 2-9
 - Adding dimensions 2-10
- Extruding a cut 2-10



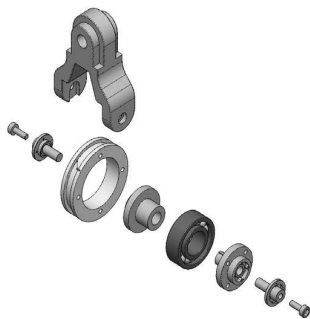
Creating a circular pattern	2-11
Adding other cut features	2-12
Creating another circular pattern	2-13
Adding a constant size fillet	2-14
Assigning material to the model	2-15
Calculating the mass of the model	2-16
Saving your work	2-16
Working with Sketch Pictures	2-17
Using Contour Select Tool	2-37

Chapter 3: **Creating Multibody Parts**



Wooden Crate	3-1
Tools needed	3-2
Starting a new part document	3-3
Sketching the first body profile	3-4
Extruding the first body	3-6
Copying the body	3-6
Creating the upper plank	3-7
Creating the first linear pattern	3-9
Mirroring the planks	3-10
Creating the lower plank	3-10
Creating the second linear pattern	3-12
Creating an exploded view	3-13
Collapsing the view	3-15
Saving your work	3-16
Exercise: Combining Multibody Parts	3-17

Chapter 4: **Working with Multibody Parts**

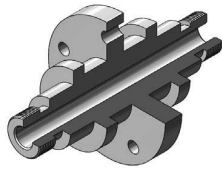


Creating Mates & Exploded Views	4-1
Tools needed	4-2
Opening a part document	4-3
Creating an exploded view	4-4
Collapsing the solid bodies	4-6
Inserting another part	4-7
Constraining the solid bodies	4-8
Adding a concentric mate	4-8
Adding a coincident mate	4-9
Creating a new mirror plane	4-10
Creating a mirror body	4-11
Inserting another part	4-13
Adding a concentric mate	4-14



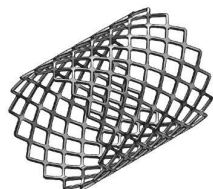
Adding a coincident mate	4-14
Adding another instance of the bolt	4-15
Adding a concentric mate	4-15
Adding a coincident mate	4-16
Editing the exploded view	4-16
Saving your work	4-17
Working with Multibodies	4-19

Chapter 5: Revolved and Thread Features



Cylinder	5-1
Tools needed	5-2
Opening a part document	5-3
Creating a revolved feature	5-3
Adding chamfers	5-4
Creating the mounting holes	5-4
Adding threads	5-7
Adding threads to the opposite end	5-9
Creating a zonal section view	5-11
Saving your work	5-12
Exercise: Revolved & Threads	5-13

Chapter 6: Flex Bending



Spanner	6-2
Tools needed	6-2
Flex Bending - Part 1	6-3
Opening a part document	6-3
Creating the first flex bending feature	6-3
Creating the second flex bending feature	6-5
Flex examples	6-6
Flex twisting	6-6
Flex stretching	6-6
Flex tapering	6-7
Flex bending	6-7
Flex Bending - Part 2	6-8
Opening a part document	6-8
Creating a flex bending	6-8
Creating a linear pattern	6-10
Exercise: Flex Bending a Car Tire	6-11
Using the Deform feature	6-13
Opening a part document	6-13
Creating a Curve-to-Curve deform	6-13



Save and close	6-14
Opening a part document	6-15
Creating a Curve to Curve deform	6-15
Mirroring a surface body	6-16
Save and close all documents	6-16
Exercise: Deform using a 3D sketch	6-17
Exercise: Using Sweep with profile twist	6-19
Exercise: Using sweep with deform	6-23

Chapter 7:

Sweep with Guide Curves 7-1

Plastic Bottle 7-1

Tools needed 7-2

Opening a part document 7-3

Creating the main body 7-3

Creating the first split line 7-5

Creating a face fillet 7-6

Creating the second split line 7-7

Creating the first offset surface 7-8

Creating a ruled surface 7-8

Creating the first knit surface 7-9

Adding the first fillet 7-9

Making the first cut with surface 7-10

Creating the first offset surface 7-11

Creating the second offset surface 7-11

Creating the second knit surface 7-12

Adding the second fillet 7-12

Making the second cut with surface 7-13

Adding the third fillet 7-14

Creating a shell 7-14

Adding the neck feature 7-15

Revolving the sketch 7-16

Creating a new plane 7-16

Creating a helix 7-17

 Sketching the thread profile 7-18

 Making the threads 7-19

 Rounding off the ends of threads 7-19

 Revolving the sketch 7-20

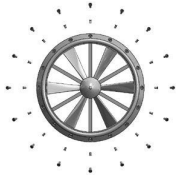
 Rounding off the opposite side 7-20

Sweep with Solid Body 7-21

Exercise: Sweep Cut using a Solid Body 7-28

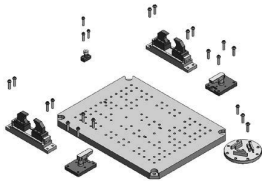
Exercise: Sweep Using a Sketch Profile 7-34



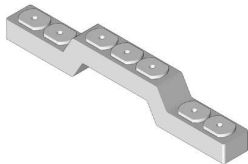


Creating the first radial exploded view	11-13
Creating the second radial exploded view	11-13
Verifying the exploded view	11-14
Exercise: Assembly Motions	11-15

Chapter 12: Using Smart-Mates 12-1

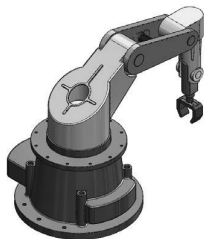


Fixture Assembly	12-1
Tools Needed	12-2
Opening an existing assembly document	12-3
Enabling the selection options	12-3
Exploring the Smart-Mate options	12-4
Using Smart-Mate Concentric	12-5
Creating a Smart-Mate Concentric & Coincident	12-6
Repeating the previous mate	12-7
Mating other components	12-8
Checking the status of the components	12-9
Switching configuration	12-9
Creating an instance of the bolt	12-10
Creating another instance of the bolt	12-11
Adding more bolts	12-12
Repeating	12-13
Using Mate Controller	12-15
Using copy with mates	12-25



Chapter 13: Introduction to Top Down Assembly 13-1

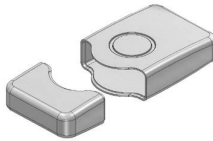
Car Remote Control Housing	13-1
Tools Needed	13-2
Opening a part document	13-3
Making an assembly from part	13-3
Placing the first component	13-4
Creating a new part	13-4
Converting the entities	13-5
Extruding the sketch	13-6
Adding the fillet	13-6
Shelling the part	13-7
Hiding a component	13-7
Adding features to the part	13-8
Creating offset entities	13-9
Extruding the sketch	13-10
Adding the fillet	13-10
Showing a component	13-11
Creating a section view	13-11





Applying dimension changes	13-12
Creating an exploded view	13-14
Playing the animation	13-15
Changing the display mode	13-16
Creating a Flat Spring Assembly	13-17
Exercise: Spring Assembly	13-29

Chapter 14: Using the Lip & Groove Options 14-1

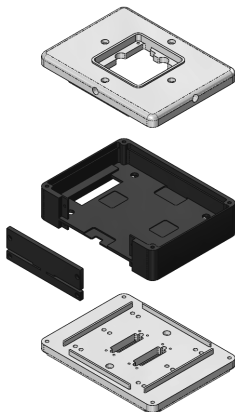


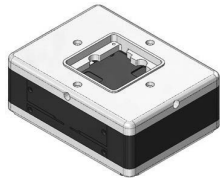
Lesson overview	14-1
Tools Needed	14-2
Using the Lip & Groove Options	14-3
Opening a part document	14-4
Editing the housing	14-4
Creating a section view	14-7
Using the Mounting Boss Tool	14-8
Opening an assembly document	14-9
Creating a mounting boss-hole feature	14-9
Setting the parameters	14-9
Hiding the Upper Half body	14-11
Creating the mating bosses	14-12
Creating a section view	14-14
Repeating	14-14



Chapter 15: Assembly Drawings & BOM 15-1

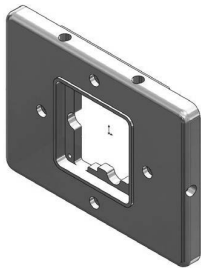
Aluminum Enclosure	15-1
Tools needed	15-2
Starting a new drawing document	15-3
Selecting the ANSI standard sheet size	15-3
Switching to ANSI standards	15-4
Using the view palette	15-5
Inserting a Bill of Materials	15-6
Modifying the BOM's Row Height	15-8
Adding a new column	15-8
Customizing the new column	15-9
Changing the color of the paper	15-10
Adding balloons	15-11
Adding an isometric view	15-12
Changing the display of a drawing view	15-13
Editing the sheet format	15-13
Switching back to the sheet	15-16
Reference reading: GD&T	15-18
Form examples	15-18



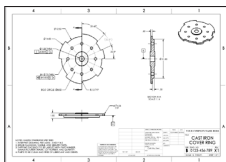
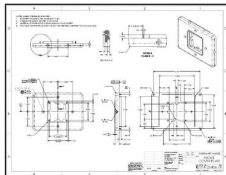



Orientation examples	15-19
Profile examples	15-19
Runout examples	15-20
Location examples	15-20
ASME – Y14.5 Symbol descriptions	15-22
Feature control frames	15-25
MMC maximum material condition	15-26
LMC least material condition	15-26

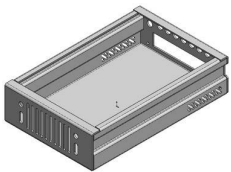
Chapter 16: Drawings & Detailing 16-1



Front Cover Plate	16-1
Tools needed	16-2
Opening a part document	16-3
Creating the drawing views	16-4
Changing to phantom line style	16-6
Creating a partial section view	16-7
Flipping the section direction	16-8
Changing the hatch pattern	16-8
Creating a detail view	16-9
Inserting the model dimensions	16-10
Cleaning up the dimensions	16-11
Inserting dimensions to another view	16-12
Breaking the view alignment	16-13
Creating a projected view	16-14
Adding the centerline symbols	16-15
Adding datums	16-16
Adding a flatness tolerance	16-18
Adding a perpendicular tolerance	16-19
Copying the control frame	16-20
Modifying the geometric tolerance	16-21
Adding another position tolerance	16-22
Adding a symmetric tolerance	16-23
Adding a bilateral tolerance	16-23
Adding a limit tolerance	16-24
Adding a basic tolerance	16-24
Adding general notes	16-25
Filling out the title block	16-26
Exercise: Creating a drawing from a model	16-29
Exercise: Attaching a note or symbol to a dimension	16-30
Exercise: Creating an engineering drawing	16-53



	Chapter 17: SOLIDWORKS MBD	17-1
	Introduction to Model Based Definition	17-1
	Tools needed	17-2
	Prismatic Parts	17-3
	Opening a part document	17-3
	Enabling SOLIDWORKS MBD	17-3
	Setting the options	17-3
	Adding datums	17-5
	Using scope	17-6
	Showing the constraint status	17-7
	Adding the size dimensions	17-8
	Showing the tolerance status	17-8
	Exercise: Adding the Size and Location Dimensions	17-9
	Turned Parts	17-13
	Capturing 3D Views	17-19
Publishing PDF and eDrawing Files	17-23	
3D PDF Template Editor	17-30	

	Chapter 18: Sheet Metal Parts	18-1
	Hard Drive Enclosure	18-1
	Tools needed	18-2
	Starting a new part document	18-3
	Creating the Base flange	18-4
	Creating a cut feature	18-5
	Creating the first edge flange	18-6
	Creating the second edge flange	18-9
	Copying and pasting a sketch	18-11
	Creating more cuts	18-13
	Creating a library feature cut	18-15
	Mirroring a feature	18-17
	Toggling the flat display	18-18
	Creating the flat pattern	18-19
	Accessing the sheet properties	18-20
Sheet metal parts – Multibody Design	18-21	
Using FeatureWorks – Feature Recognition	18-37	

	Chapter 19: Plastic Parts	19-1
	Plastic Part_Design1	19-1
	Tools Needed	19-2
	Making the base feature	19-3



Creating a cut feature	19-4
Adding the raised features	19-5
Adding fillets	19-6
Shelling the model	19-6
Making the interlock feature	19-7
Creating a face fillet	19-8
Adding another fillet	19-9
Creating the side holes	19-10

Plastic Part_Design2 19-11



Extruding the base feature	19-11
Making the upper cut	19-12
Creating a new plane	19-14
Sketching the button holes	19-14
Making the cut	19-15
Shelling the model	19-16
Adding a step cut	19-17
Making the interlock feature	19-18
Extruding a boss feature	19-19
Adding a fillet	19-20
Creating the flat-cable outlet cut	19-20
Creating the LED holes	19-21
Adding the mounting bosses	19-22
Adding the mounting holes	19-23
Adding a fillet	19-24

Chapter 20: Casted Parts 20-1

Casted Upper Housing 20-1

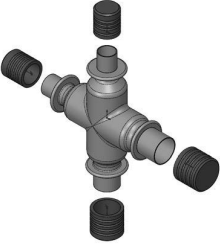


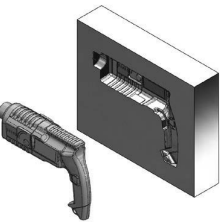
Tools needed	20-2
Creating the base	20-3
Adding the counterbore holes	20-5
Making the side support walls	20-8
Adding drafts	20-9
Mirroring multiple features	20-10
Adding Ribs	20-11

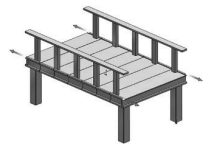
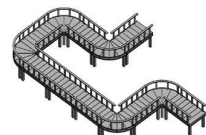
Casted Valve Body 20-15






Viewing the part/child relationships	20-16
Exercise: Casted Bracket	20-29
Exercise: Converting Catia or STL files	20-37

	Chapter 21: Smart Components	21-1
	Using Auto Size & Configurator Table	21-1
	Tools needed	21-2
	Opening a part document	21-3
	Showing the dimensions and their names	21-3
	Splitting the FeatureManager tree	21-4
	Adding a new configuration	21-4
	Creating mate references	21-6
	Testing the mate references	21-7
	Making a smart component	21-8
	Testing the smart component	21-9
Adding other instances of the cap	21-10	

	Chapter 22: Using Subtract & Intersect Tools	22-1
	Simple Cavity	22-1
	Opening a part document	22-3
	Scaling the part	22-3
	Extruding the mold block	22-3
	Assigning material	22-4
	Copying a solid body	22-4
	Creating the cavity	22-5
	Separating the solid bodies	22-6
	Using the intersect tool	22-7
	Exercise: Creating a Cavity with Combine Subtract	22-10

 	Chapter 23: Using Magnetic Mates	23-1
	Deck Assembly	23-1
	Tools needed	23-2
	Publishing an asset	23-4
	Opening another part document	23-6
	Defining another asset publisher	23-7
	Opening an assembly document	23-8
	Adding the section1 component to the assembly	23-9
	Adding another instance of section1	23-10
	Adding more instances	23-11

Chapter 24: Hybrid Modeling	24-1
Remote Control	24-1
Tools needed	24-2

	Extruding the first surface	24-3
	Extruding the second surface	24-4
	Trimming the surfaces	24-4
	Thickening the surfaces	24-5
	Creating a split line feature	24-5
	Adding draft	24-6
	Adding a variable size fillet	24-7
	Shelling the solid body	24-8
	Cutting the solid body	24-8
	Saving the upper half	24-9
	Saving the lower half	24-9
	Flipping the cut direction	24-9
	Inserting the top half	24-10
	Creating the cut for the keypad	24-11
	Separating the two halves	24-12
	Changing appearance	24-12
	Exercise: Loft with guide curves	24-15
	Exercise: Using boundary solid	24-17
	Exercise: Using boundary surface	24-19

Glossary

Index

SOLIDWORKS 2024 Quick-Guides

