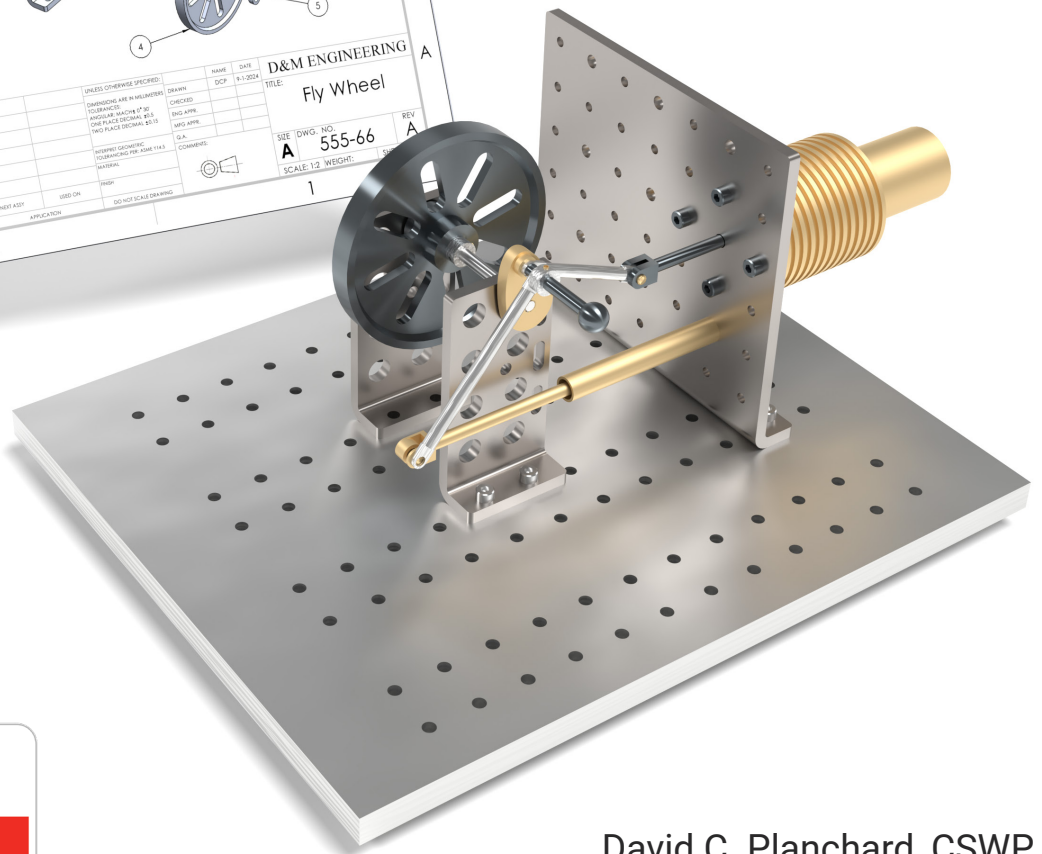
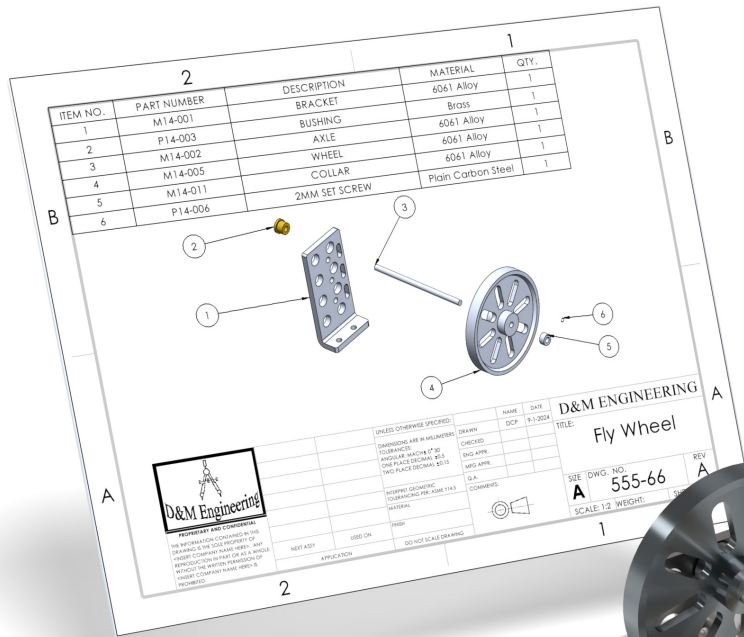


# SOLIDWORKS® 2024 Quick Start

Includes  
SOLIDWORKS and  
3DEXPERIENCE eBook



David C. Planchard, CSWP,  
SOLIDWORKS Accredited Educator



Better Textbooks. Lower Prices.  
www.SDCpublications.com



ACCESS CODE  
UNIQUE CODE INSIDE

Visit the following websites to learn more about this book:



[amazon.com](https://www.amazon.com)

[Google books](https://books.google.com)

[BARNES & NOBLE](https://www.barnesandnoble.com)

## TABLE OF CONTENTS

<b>Introduction</b>	<b>I-1</b>
About the Author	I-4
Acknowledgements	I-5
Contact the Author	I-6
Note to Instructors	I-6
Trademarks, Disclaimer, and Copyrighted Material	I-6
References	I-7
Table of Contents	I-8
Overview of Chapters	I-16
Chapter 1: Overview of SOLIDWORKS and the User Interface	I-16
Chapter 2: 2D Sketching, Features and Parts	I-16
Chapter 3: Assembly Modeling - Bottom-up Method	I-17
Chapter 4: Design Modifications	I-17
Chapter 5: Drawing and Dimensioning Fundamentals	I-19
Chapter 6: Certified Associate - Mechanical Design (CSWA) exam	I-19
Chapter 7: Additive Manufacturing - 3D printing fundamentals	I-20
Book Layout	I-22
Windows Terminology in SOLIDWORKS	I-23
<b>Chapter 1 - Overview of SOLIDWORKS and the User Interface</b>	<b>I-1</b>
Chapter Objective	I-3
What is SOLIDWORKS?	I-3
Basic concepts in SOLIDWORKS	I-4
Start a SOLIDWORKS Session	I-4
<i>Tutorial: Start a SOLIDWORKS Session</i>	I-4
Welcome dialog box	I-4
Home Tab	I-5
Recent Tab	I-5
Learn Tab	I-5
Alerts Tab	I-6
SOLIDWORKS User Interface (UI) and CommandManager	I-7
Menu Bar toolbar	I-7
Menu Bar menu	I-8
Drop-down menu	I-8
Create a New Part Document	I-9
Novice Mode	I-10
Advanced Mode	I-10
Graphic Window (Default)	I-11
View Default Sketch Planes	I-12
Open a Part	I-12
Part FeatureManager	I-13
FeatureManager Rollback Bar	I-13
Heads-up View toolbar	I-15
Dynamic Annotation Views	I-15
Zoom to Fit	I-15
Zoom to Area	I-15
Window-Select	I-15

Rotate	1-15
Front View	1-16
Right View	1-16
Top View	1-16
Trimetric view	1-16
SOLIDWORKS Help	1-16
SOLIDWORKS Tutorials	1-17
User Interface Tools	1-17
Right-click	1-18
Consolidated toolbar	1-18
System feedback icons	1-18
Confirmation Corner	1-19
Heads-up View toolbar	1-19
CommandManager (Default Part tab)	1-22
CommandManager (Default Drawing tab)	1-23
CommandManager (Default Assembly tab)	1-24
CommandManager (Float/Fit)	1-25
Collapse the CommandManager	1-25
FeatureManager Design Tree	1-26
FeatureManager design tree tab	1-26
PropertyManager tab	1-26
Configuration Manager tab	1-26
DimXpertManager tab	1-26
DisplayManager tab	1-26
CAM tab	1-26
Hide/Show tab	1-26
Sensors tool	1-26
Tags	1-27
Split	1-27
Fly-out FeatureManager	1-28
Task Pane	1-29
SOLIDWORKS Resources	1-29
Design Library	1-30
File Explorer	1-31
View Palette	1-31
Appearances, Scenes, and Decals	1-31
Custom Properties	1-32
3DEXPERIENCE files on This PC	1-32
3DEXPERIENCE	1-32
Dynamic Reference Visualization	1-33
Mouse Movements	1-34
Single-Click	1-34
Double-Click	1-34
Right-Click	1-34
Scroll Wheel	1-34
Saving SOLIDWORKS Documents as Previous version	1-35
Summary	1-36

<b>Chapter 2 - 2D Sketching, Features and Parts</b>	<b>2-1</b>
Chapter Overview	2-1
Chapter Objective	2-3
Start a SOLIDWORKS Session	2-3
Create a new Part Document	2-3
Set Document Properties	2-5
Drafting Standard	2-5
Units	2-5
Precision	2-5
2D Sketching - Identify the Correct Sketch Plane	2-6
Sketch States	2-6
Under Defined	2-6
Fully Defined	2-6
Over Defined	2-6
Wheel Part - Base Sketch	2-7
Origin	2-7
Geometric Relations	2-7
Sketch Dimensions	2-9
Wheel Part - Sketch1: Circle, Geometric relations and Dimensions	2-10
Wheel Part - First Feature (Extruded Base)	2-10
Design Intent	2-11
Edit Base Sketch	2-13
Edit Sketch Plane	2-13
Display Modes, View Modes and View tools	2-14
Wheel Part - Sketch2: Centerline, Line and Mirror Entities	2-14
Wheel Part - Second Feature (Revolved Boss)	2-14
Wheel Part - Sketch3: Centerpoint Straight Slot, Circle and Construction geometry	2-20
Wheel Part - Third Feature (Extruded Cut)	2-20
Wheel Part - Fourth Feature (Circular Pattern)	2-24
Wheel Part - Fifth Feature (Hole Wizard)	2-25
Wheel Part - Sixth Feature (Fillet)	2-26
Wheel Part - Add Material (6061 Alloy)	2-27
Wheel Part - View Mass Properties	2-29
Wheel Part - Modify the Number of Instances in the Circular Pattern	2-30
Wheel Part - View the new Mass Properties	2-30
Wheel Part - Return to the original Number of Instances	2-30
Wheel Part - Apply Appearance	2-31
Wheel Part - Apply Measure	2-31
Summary	2-32
Exercises	2-36
<b>Chapter 3 - Assembly Modeling - Bottom up method</b>	<b>3-1</b>
Chapter Overview	3-1
Chapter Objective	3-3
Start a SOLIDWORKS Session	3-3
Create a new Assembly Document	3-4
Set Document Properties	3-5
Drafting Standard	3-5
Units	3-5
Precision	3-5
Assembly Modeling Approach	3-6

Linear Motion and Rotational Motion	3-6
Create the Fly Wheel Assembly	3-7
Insert the First Component - Bracket (Fixed to the origin)	3-7
Mate Types	3-9
Standard Mates	3-9
Advanced Mates	3-10
Mechanical Mates	3-11
Quick Mate	3-12
Insert the Second Component - Bushing	3-12
Insert a Concentric and Coincident Mate	3-13
Insert the Third Component - Axle	3-14
Insert a Concentric and Distance Mate	3-15
Insert the Fourth Component - Wheel	3-15
Insert a Concentric and Distance Mate	3-17
Insert the Fifth Component - Collar	3-18
Insert a Concentric and Coincident Mate	3-19
Insert the Sixth Component - 2 MM Set Screw	3-20
Insert a Concentric, Tangent and Coincident Mate	3-22
Create an Exploded View of the Fly Wheel Assembly	3-23
Create the Stirling Engine Assembly	3-26
Hide Component	3-27
Insert the Fly Wheel Assembly	3-28
Rotate Component	3-28
Insert a Concentric Mate	3-29
Insert a second Concentric Mate	3-30
Apply the Measure tool	3-31
Modify the Axle Component Length	3-31
Make the Fly Wheel Assembly Flexible	3-32
Insert a Coincident Mate	3-32
Show Components	3-33
Pack and Go the Assembly	3-34
Summary	3-35
Exercises	3-37
<b>Chapter 4 - Design Modifications</b>	<b>4-1</b>
Chapter Overview	4-1
Chapter Objective	4-3
Start a SOLIDWORKS Session	4-3
Open an Existing Assembly	4-4
Stirling Engine Modified Assembly	4-4
Verify Collision between Components	4-5
Apply the Move Component tool	4-5
Set Collision Detection	4-5
Apply the Interference Detection tool	4-7
Calculate the Interference -Note there is interference	4-8
Modify the Assembly (Connection Rod Mate)	4-9
Verify the Modification - Measure tool	4-10
Apply the Interference Detection tool - check Solution	4-11
Calculate the Interference - No interference	4-12
Locate the Center of Mass	4-13
Display the Center of Mass	4-14

Create a new Coordinate System	4-15
Display the Mass Properties - New Coordinate System	4-16
Apply Assembly Visualization	4-16
Sort Assembly Components by Mass	4-18
Create a Motion Study	4-20
Create and save a motion file	4-20
Summary	4-22
Exercises	4-25

## **Chapter 5 - Drawing and Dimensioning Fundamentals**

**5-1**

Chapter Overview	5-1
Chapter Objective	5-3
Start a SOLIDWORKS Session	5-3
New Drawing Document	5-4
Sheet Properties	5-5
Document Properties	5-6
Drafting Standard	5-6
Units	5-6
Precision	5-6
Title Block	5-7
Fly Wheel Assembly Drawing	5-8
View Palette	5-8
Isometric Exploded View	5-8
Sheet Scale	5-8
Modify Display Mode	5-9
Auto Balloons	5-9
Bill of Materials	5-11
Set Custom Properties	5-14
Title Block	5-16
Bushing Part Drawing	5-19
View Palette	5-20
Front, Top, Right and Isometric View	5-20
Import Dimensions (Model Items tool)	5-22
Move Dimensions	5-23
Hide Dimensions	5-23
Insert Dimension Text	5-24
Modify Display Mode	5-24
Dimension Extension Line Gaps	5-25
Dimensions (Smart Dimension tool)	5-25
Annotation	5-26
Hide a View	5-27
Modify the Sheet Scale	5-28
Summary	5-29
Exercises	5-31

**Exclusive Bonus Content** – Instructions for download on inside front cover of book

## **Chapter 6 - Certified Associate - Mechanical Design (CSWA) Exam**

**6-1**

Chapter Objective	6-1
Introduction	6-3
Part 1 of the Exam	6-5

Basic Part Creation and Modification, Intermediate Part Creation and Modification	6-5
Assembly Creation and Modification	6-7
Part 2 of the Exam	6-8
Introduction and Drafting Competencies	6-8
Advanced Part Creating and Modification	6-9
Assembly Creation and Modification	6-10
Intended Audience	6-11
During the Exam	6-12
Drafting Competencies	6-13
Example 1	6-13
Example 2	6-13
Example 3	6-14
Example 4	6-14
Example 5	6-14
Example 6	6-14
Basic Part Creation and Modification, Intermediate Part Creation and Modification	6-15
Example 1	6-16
Example 2	6-17
Example 3	6-18
Example 4	6-19
Example 5	6-20
Example 6	6-21
Example 6A	6-23
Example 6B	6-23
Advanced Part Creation and Modification	6-24
Example 1	6-24
Example 2	6-26
Example 3	6-27
Example 4	6-28
Example 5	6-29
Example 6	6-31
Example 6A	6-32
Assembly Creation and Modification	6-33
Example 1	6-34
<b>Chapter 7 - Additive Manufacturing - 3D Printing Fundamentals</b>	<b>7-1</b>
Chapter Objective	7-3
Additive vs. Subtractive Manufacturing	7-4
3D Printer Technology	7-5
Stages of 3D Printing	7-5
Fused Filament Fabrication (FFF)	7-6
StereoLithography (SLA)	7-9
Selective Laser Sintering (SLS)	7-11
Select the Correct Filament Material for FFF	7-12
PLA (Polylactic Acid)	7-13
Flex/Soft PLA	7-13
PLA Storage	7-14
PLA Part Accuracy	7-14
ABS (Acrylonitrile-Butadiene-Styrene)	7-14
ABS Storage	7-15
ABS Part Accuracy	7-15



Nylon	7-16
Nylon 618	7-16
Nylon 645	7-16
Nylon Storage	7-17
Nylon Accuracy	7-17
PVA (Polyvinyl Alcohol)	7-17
STereoLithography (*.stl) file	7-18
Save an STL (*.stl) file	7-18
Additive Manufacturing (*.amf) file	7-19
Save an Additive Manufacturing (*.amf) file	7-19
3D Manufacturing Format (*.3mf) file	7-20
Save a 3D Manufacturing Format (*.3mf) file	7-20
What is a Slicer?	7-21
How does a Slicer Work?	7-21
Slicer Parameters	7-21
Layer Height	7-21
Shell (Wall) Thickness	7-22
Infill Density/Overlap	7-22
Infill Patterns	7-22
Print Speed	7-23
Support Types	7-23
Touching Buildplate	7-23
Everywhere	7-24
Bed Platform Adhesion	7-24
Raft	7-24
Skirt	7-24
Brim	7-24
Part Orientation	7-25
Example 1	7-25
Example 2	7-26
Optimize Print Direction	7-26
Thin Region	7-26
Area of Overhang	7-26
Amount of needed Support	7-26
Remove Model from the Build Plate	7-28
Non-heated Build Plate	7-28
Heated Build Plate	7-28
Know the Printer's Limitations	7-29
Tolerance for Interlocking Parts	7-29
General Printing Tips	7-29
Reduce Infill/Overlap	7-29
Control Build Area Temperature	7-30
Add Pads	7-31
Safe Zone Rule	7-31
First Layer Not Sticking	7-31
Level Build Platform	7-32
Minimize Internal Support	7-32
Design a Water Tight Mesh	7-32
Clearance	7-32
In General	7-33

SOLIDWORKS Additive Manufacturing Certification (CSWA-AM)	7-34
Summary	7-35
<b>Appendix</b>	
SOLIDWORKS Keyboard Shortcuts	A-1
Modeling - Best Practices	A-3
Helpful On-Line Information	A-5
SOLIDWORKS Document Types	A-6
<b>Bonus Section</b>	<b>B-1</b>
SOLIDWORKS and the 3DEXPERIENCE platform	
<b>Glossary</b>	<b>G-1</b>
<b>Index</b>	<b>I-1</b>