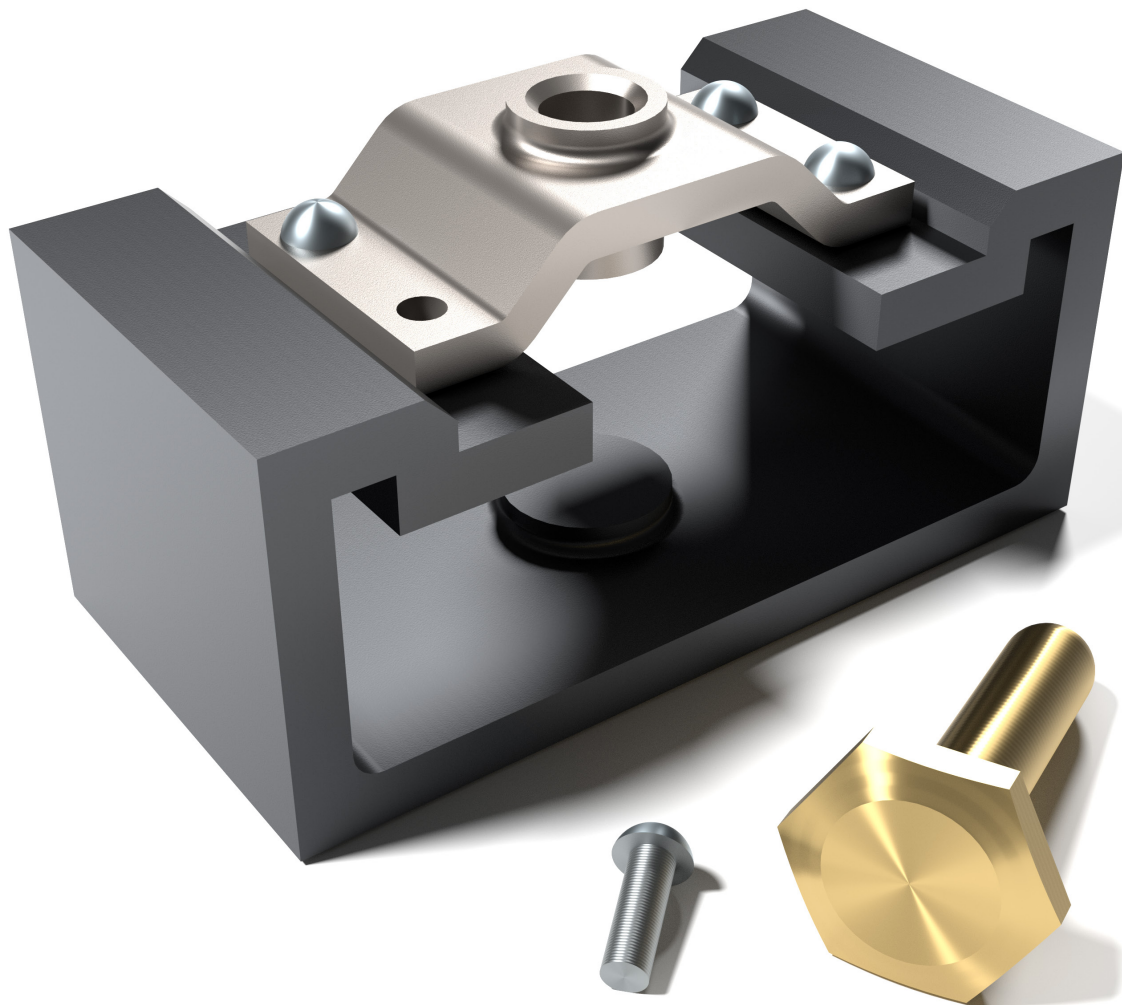


Design Workbook Using **SOLIDWORKS® 2024**

Design, Detailing, Assembly & Analysis Basics



Ronald E. Barr
Thomas J. Krueger
Davor Juricic
Alejandro Reyes MSME, CSWE, CSWI

Visit the following websites to learn more about this book:



[amazon.com](https://www.amazon.com)

[Google books](https://books.google.com)

[BARNES & NOBLE](https://www.barnesandnoble.com)

Table of Contents

1. Design Workbook Lab 1: Basic 2D Sketching

Introduction to SOLIDWORKS; Screen Layout; Menus; FeatureManager Tree; View Orientations; Sketching Toolbars; Sketch Planes; Starting a New Part; Part Units; Basic Dimensioning; Extruded and Revolved Parts.

| | |
|--|------|
| Exercise 1.1: Carbon Fiber Gasket..... | 1-11 |
| Exercise 1.2: Cover Plate | 1-18 |
| Exercise 1.3: Wall Bracket..... | 1-22 |
| Exercise 1.4: Machine Handle | 1-25 |
| Supplementary Exercises | 1-28 |

2. Design Workbook Lab 2: Advanced 2D Sketching

Review of 2D Sketch Entities; Advanced Sketching Tools; Sketch Editing Tools; Linear and Circular Repeats; Extruded and Revolved Parts.

| | |
|---------------------------------------|------|
| Exercise 2.1: Metal Grate | 2-3 |
| Exercise 2.2: Torque Sensor | 2-8 |
| Exercise 2.3: Scalloped Knob..... | 2-11 |
| Exercise 2.4: Linear Step Plate | 2-14 |
| Supplementary Exercises | 2-19 |

3. Design Workbook Lab 3: 3D Modeling Part I

Adding Sketch Relations; 3D Features Toolbar; Advanced Extrusion and Revolution Operations; Create Reference Geometry; 3D Mirror Feature; Create Linear and Circular 3D Patterns.

| | |
|---|------|
| Exercise 3.1: Clevis Mounting Bracket | 3-3 |
| Exercise 3.2: Manifold | 3-8 |
| Exercise 3.3: Hand Wheel | 3-13 |
| Exercise 3.4: Toe Clamp | 3-18 |
| Supplementary Exercises | 3-22 |

4. Design Workbook Lab 4: 3D Modeling Part II

Creating Advanced 3D Features: Draft, Shell, Dome, Loft, Sweep; Advanced Extrusion and Revolution Operations.

| | |
|--|------|
| Exercise 4.1: Drawer Tray | 4-2 |
| Exercise 4.2: Tap-Light Dome | 4-7 |
| Exercise 4.3: Threads and Fasteners..... | 4-10 |
| Exercise 4.4: Jack Stand | 4-19 |
| Supplementary Exercises | 4-23 |

5. Design Workbook Lab 5: Assembly Modeling

Practice 3D Part Modeling; Creating a New Assembly; Assembly Toolbar; Adding Parts to an Assembly; Move and Rotate a Component; Mate Parts Together.

| | |
|--|------|
| Exercise 5.1: Terminal Support Assembly..... | 5-5 |
| Exercise 5.2: Pulley Assembly | 5-14 |
| Supplementary Exercises..... | 5-23 |

6. Design Workbook Lab 6: Part Evaluation and Configurations

Measure Tool; Component Mass Properties; Mass Properties Units; Editing and Modifying a Solid Model; Design Table Basics; Entering Design Table Parameters; Configuration Manager.

| | |
|---|------|
| Exercise 6.1: Rocker Arm Mass Properties..... | 6-4 |
| Exercise 6.2: Socket Design Table..... | 6-12 |
| Supplementary Exercises..... | 6-18 |

7. Design Workbook Lab 7: Static Stress and Thermal Analysis

Introduction to Finite Element Analysis Using SOLIDWORKS Simulation; Definition of FEA Terms; Basic FEA Stress Analysis; Applying Loads and Constraints; FEA Mesh Creation; Analyzing the Model for Stress Distribution; Printing the von Mises Stress Distribution; Design Changes Based on Analysis Results.

| | |
|---|------|
| Exercise 7.1: Finite Element Analysis of a Pillow Block | 7-3 |
| Exercise 7.2: Thermal Analysis of a Computer Chip | 7-15 |

8. Design Workbook Lab 8: Animation, Detailing and Rapid Prototyping

Introduction to the SOLIDWORKS Animation Wizard; Assembly Exploded View; Creating the Animation; Animation Controller; Editing the Animation; Saving an .AVI File; Animation Motion Elements; Introduction to Rapid Prototyping.

| | |
|---|------|
| Exercise 8.1: Exploded Animation of the Terminal Support Assembly | 8-6 |
| Exercise 8.2: Exploded Animation of the Pulley Assembly | 8-11 |
| Exercise 8.3: Creating Component Drawing Views for Manufacturing | 8-15 |
| Exercise 8.4: Rapid Prototyping of a Solid Model Part | 8-19 |

9. Design Workbook Lab 9: Section Views in 2D and 3D

Viewing a 3D Section View of a Solid Model; Printing 3D Section View; Changing Drawing and Hatch Pattern Options; Projecting Orthographic Views; Making a 2D Section View.

| | |
|--|------|
| Exercise 9.1: Rod Base Section View | 9-5 |
| Exercise 9.2: Tension Cable Bracket Section View | 9-11 |
| Exercise 9.3: Milling End Adapter Section View | 9-17 |
| Exercise 9-4: Plastic Revolving Ball Assembly Section View | 9-23 |
| Supplementary Exercises | 9-30 |

10. Design Workbook Lab 10: Manufacturing Detail Drawings

Drawing Sheet Options; Projecting Orthographic Views in a Drawing; Adding Centerlines; Importing Annotations from the 3D Model; Dimensioning the Drawing; Adding Manual Annotations.

| | |
|---|-------|
| Exercise 10.1: Guide Block Drawing | 10-7 |
| Exercise 10.2: Pipe Joint Drawing | 10-11 |
| Exercise 10.3: Pedestal Base Drawing..... | 10-16 |
| Exercise 10.4: Tooling Pad Drawing..... | 10-20 |
| Supplementary Exercises | 10-26 |

APPENDIX A – Drawing Sheet Template