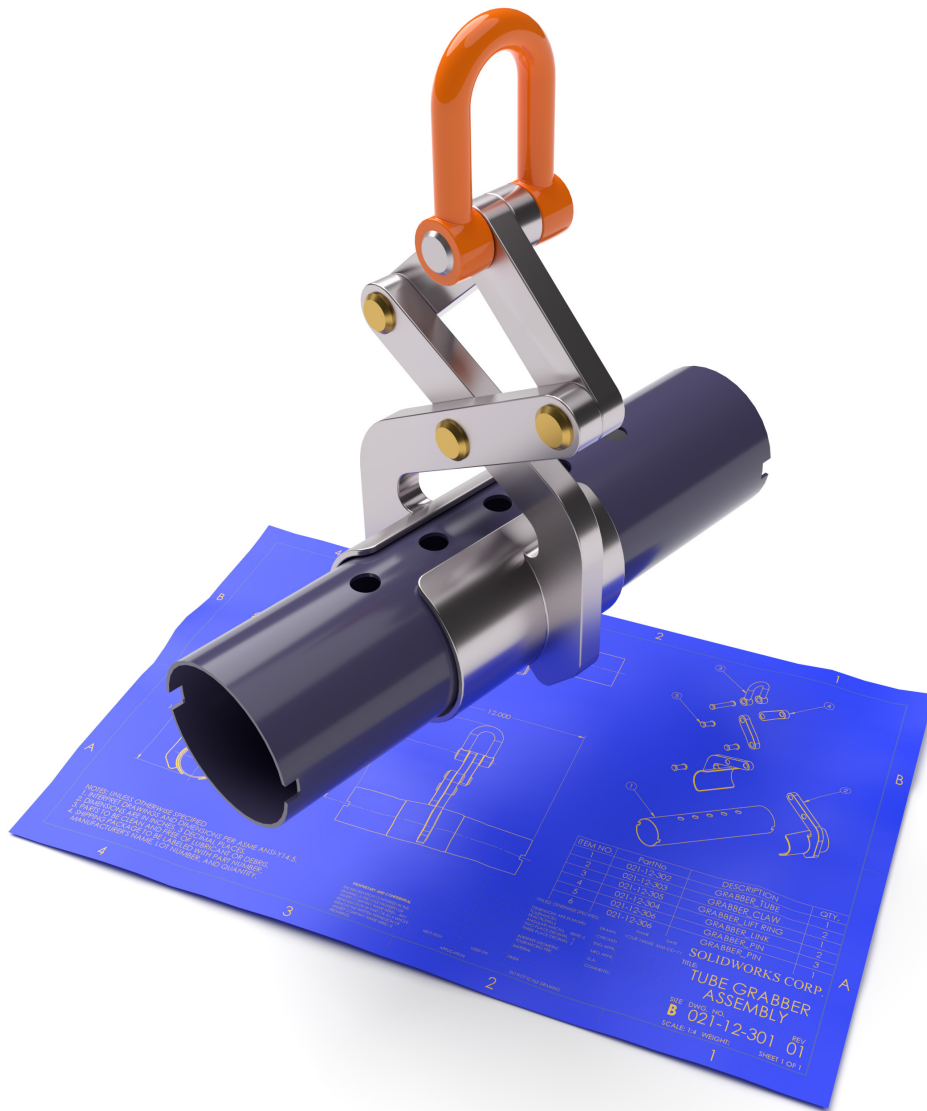


# Mastering Modern CAD Drawings with SOLIDWORKS® 2024

Applying ASME Standards to Engineering Drawings



Lani Tran, CSWE

Visit the following websites to learn more about this book:


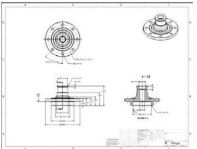
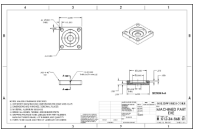


[amazon.com](https://www.amazon.com)

[Google books](https://books.google.com)

[BARNES & NOBLE](https://www.barnesandnoble.com)

# TABLE OF CONTENTS

<b>Lesson 1:</b>	<b>INTRODUCTION TO CAD DRAWINGS</b>	<b>1-1</b>
	Manual vs. Computer Aided Drawings	1-1
	Technical drawings	1-1
	Sketching	1-1
	Manual drawings	1-2
	Computer Aided Design	1-3
	Pros and cons of 2D vs. 3D CAD	1-5
	SOLIDWORKS – The industry standard	1-6
	Which industries use SOLIDWORKS	1-7
	Why companies use SOLIDWORKS	1-8
	SOLIDWORKS drawings	1-8
		
<b>Lesson 2:</b>	<b>DETAILING A MACHINED PART</b>	<b>2-1</b>
	Opening a part document	2-1
	Setting the drawing properties	2-2
	Making drawing from part	2-2
	Setting up the sheet properties	2-2
	Selecting the sheet size	2-3
	Creating the drawing views	2-3
	Using the Task pane	2-3
	Projecting the drawing views	2-4
	Changing the view scale	2-5
	Rearranging the drawing views	2-6
	Deleting a drawing view	2-6
	Modifying the sheet scale	2-7
	Making a section view	2-8
	Modifying the hatch pattern	2-9
	Adding centerlines	2-10
	Changing the font size	2-11
	Changing the paper size	2-12
	Inserting the model dimensions	2-13
	Moving dimensions	2-15
	Adding the break lines	2-16
	Inserting more dimensions	2-17
	Adding callouts	2-18
	Modifying the dimension text	2-20
	Adding datums	2-21
	Adding the general notes	2-23
	Inserting a revision table	2-24
		
		

Filling out the title block 2-26  
 Switching to the Sheet layer 2-27  
 Exercise: Detailing a machined part 2-29

**Lesson 3:**

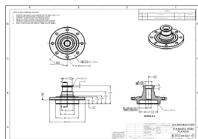
**UNDERSTANDING TOLERANCE, PRECISION, AND GD&T 3-1**  
 Using GD&T in a drawing 3-1  
 Four types of tolerances 3-1  
 What is GD&T 3-2  
 Rule #1 and #2 3-3  
 Terminology used in GD&T 3-4  
     Maximum material condition 3-6  
     Least material condition 3-7  
     Size, location, orientation, Form 3-8  
 Types of GD&T Tolerances 3-9  
     Material modifier 3-10  
     Straightness 3-11  
     Flatness – Surface 3-12  
     Flatness – FOS/DMP 3-13  
     Circularity 3-14  
     Cylindricity 3-15  
     Line profile 3-16  
     Surface profile 3-17  
     Parallelism – FOS 3-18  
     Parallelism – Surface 3-19  
     Perpendicularity – Surface 3-20  
     Perpendicularity – FOS 3-21  
     Angularity 3-22  
     Runout 3-23  
     Total runout 3-24  
     Position 3-25  
     Concentricity 3-26  
     Symmetry 3-27  
 GD&T in a nut shell 3-28  
 What are the advantages of GD&T 3-28

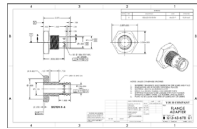


TYPE OF TOLERANCE	CHARACTERISTIC	SYMBOL
FORM	STRAIGHTNESS	
	FLATNESS	
	CIRCULARITY	
PROFILE	PROFILE OF A LINE	
	PROFILE OF A SURFACE	
ORIENTATION	ANGULARITY	
	PERPENDICULARITY	
LOCATION	PARALLELISM	
	POSITION	
	CONCENTRICITY	
RUNOUT	SYMMETRY	
	CIRCULAR RUNOUT	
	TOTAL RUNOUT	

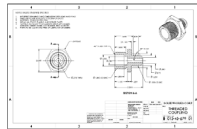
**Lesson 4:**

**TOLERANCE, PRECISION, and GD&T in SOLIDWORKS 4-1**  
 Stainless steel flange 4-1  
 Opening a drawing document 4-1  
 Adding a symmetric tolerance 4-2  
 Adding a bilateral tolerance 4-3  
 Adding a limit tolerance 4-4



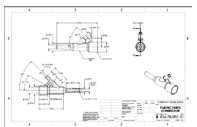
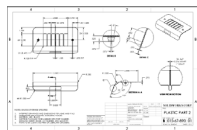
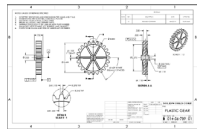


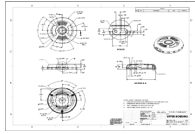
Adding a basic dimension	4-5
Adding a unilateral tolerance	4-7
Adding a true position tolerance	4-9
Bonus tolerance formular	4-10
Adding a concentric control	4-11
Exercise: Detailing a machined part	4-13
Creating the drawing views	4-14
Adding dimensions	4-15
Adding tolerance and precision	4-16
Adding the general notes	4-17
Adding a revision block	4-18
Filling out the title block	4-19
Exercise: Detailing a machined part	4-21



## Lesson 5:

<b>PLASTIC PARTS</b>	<b>5-1</b>
Plastic gear	5-1
Opening a part document	5-1
Transferring to drawing	5-2
Setting up the sheet properties	5-2
Creating the drawing views	5-3
Making a section view	5-4
Changing the hatch pattern	5-5
Adding a detail view	5-6
Inserting model dimensions	5-8
Moving dimensions	5-9
Hiding dimensions	5-10
Adding the missing dimensions	5-11
Modifying the dimension text	5-12
Adding datums	5-14
Adding Geometric dimensions & tolerances	5-14
Adding the general notes	5-16
Adding a revision block	5-17
Filling out the title block	5-18
Exercise 1: Detailing a plastic part 1	5-20
Creating the drawing views	5-21
Making a section view	5-22
Modifying the hatch pattern	5-23
Adding a detail view	5-24
Creating a crop view	5-25
Breaking the view alignment	5-26
Adding dimensions	5-26
Adding the general notes	5-28

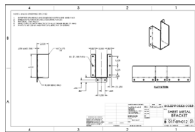
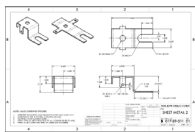
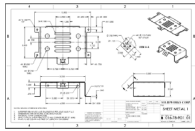




Filling out the title block information	5-29
Exercise 2: Detailing a plastic part 2	5-31
Exercise 3: Detailing a plastic part 3	5-35

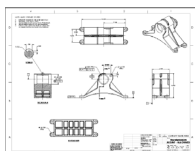
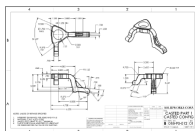
**Lesson 6:**

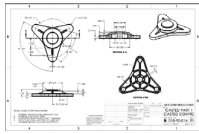
<b>SHEET METAL PARTS</b>	<b>6-1</b>
Detailing a sheet metal part	6-1
Opening a part document	6-1
Setting up the drawing sheet	6-2
Creating the drawing views	6-3
Adding the auxiliary view	6-4
Creating a crop view	6-5
Inserting dimensions	6-6
Rearranging dimensions	6-7
Adding the general notes	6-8
Filling out the title block	6-9
Adding a flat pattern view	6-10
Exercise: Detailing a sheet metal part	6-12
Making drawing from part	6-12
Creating the drawing views	6-13
Adding centerlines and center marks	6-14
Adding model dimensions	6-14
Adding the general notes	6-16
Filling out the title block	6-17
Detailing a sheet metal part	6-19



**Lesson 7:**

<b>CASTINGS AND FORGINGS</b>	<b>7-1</b>
Detailing a casted part	7-1
Opening a part document	7-1
Drawings overview	7-2
Adding a 2 <sup>nd</sup> sheet	7-3
Creating a casted drawing	7-3
Inserting dimensions	7-4
Adding and moving dimensions	7-5
Adding the general notes	7-6
Filling out the title block information	7-7
Creating a machined drawing	7-8
Adding the drawing views from the View Palette	7-8
Inserting dimensions	7-9
Cleaning up the dimensions	7-10
Adding datums	7-12
Adding geometric tolerances	7-13



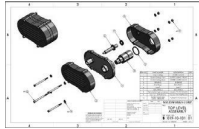


Filling out the title block	7-14
Exercise: Detailing a casted part 1	7-16
Exercise: Detailing a casted part 2	7-35

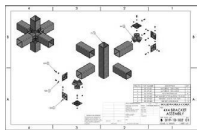
## Lesson 8:

### ASSEMBLY DRAWINGS

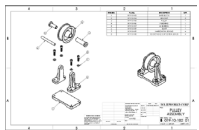
8-1



Detailing an assembly drawing	8-1
Opening an assembly document	8-1
Making drawing from assembly	8-2
Adding drawing views from the view palette	8-3
Adding balloons	8-4
Rearranging the balloons	8-5
Adding the instance callouts	8-6
Inserting the bill of materials	8-7
Adjusting the bill of materials	8-9
Filling out the BOM manually	8-10
Filling out the title block information	8-11



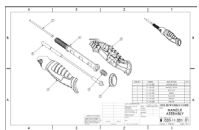
Exercise: Detailing an assembly drawing	8-13
Making drawing from assembly	8-13
Creating the drawing views	8-14
Adding balloons	8-15
Inserting the bill of materials	8-16
Changing the custom properties	8-17
Filling the title block information	8-18
Detailing an assembly drawing	8-21



## Lesson 9:

### CUSTOM PROPERTIES

9-1



Creating the custom properties	9-1
Opening an assembly document	9-1
Opening a part from an assembly document	9-2
Creating the custom properties	9-2
Entering the custom property information	9-3
Making drawing from assembly	9-5
Adding the drawing views	9-6
Adding balloons	9-7
Inserting the bill of materials	9-8
Switching the custom properties	9-9
Filling out the title block	9-10
Using the Property Tab Builder	9-12
Setting up the sheet properties	9-12
Accessing the custom properties tab	9-13
Creating the template	9-13





Adding a groupbox	9-14
Adding a textbox field	9-15
Adding a list field	9-15
Entering other information	9-16
Saving the Property Tab template	9-17
Testing the DRW Properties Template	9-17
Creating a sample part	9-20
Making drawing from part	9-21
Populating the custom properties	9-22

**Lesson 10:**

**CONFIGURATIONS 10-1**

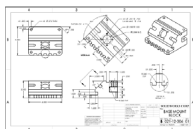


Creating Design Table using MS-Excel	10-1
Opening a part document	10-1
Renaming dimensions	10-2
Inserting an Excel-based design table	10-3
Adding new configurations in Excel	10-4
Adding new features to the design table	10-5
Assigning the feature's states	10-6
Switching back to SOLIDWORKS application	10-7
Viewing the new configurations	10-8
Adjusting the rows and columns	10-9
Making drawing from part	10-10
Adding an isometric view for the palette	10-10
Inserting the design table	10-11
Adjusting the table header in Excel	10-12
Switching back to drawing	10-13
Filling out the title block information	10-14
Creating a tabulated table from the design table	10-15
Updating the drawing	10-16



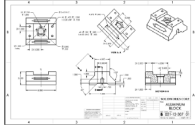
**Lesson 11:**

**ADDITIONAL DRAWING TOOLS 11-1**

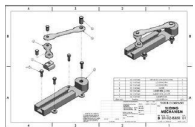
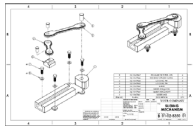


Detailing the base mount block	11-1
Opening a part document	11-1
Making the standard drawing views from part	11-2
Adding an auxiliary view	11-3
Breaking the view alignment	11-4
Creating a broken-out section view	11-5
Modifying the hatch pattern	11-6
Adding a detail view	11-7
Adding centerlines and center marks	11-8
Inserting the model dimensions	11-9



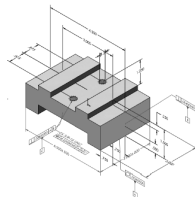


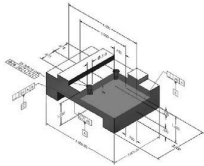
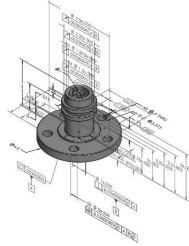
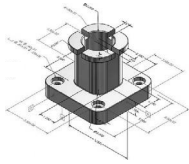
Rearranging dimensions	11-10
Changing dimension colors	11-13
Showing a sketch from the model	11-14
Adding the pattern instances	11-15
Creating a parametric note	11-16
SOLIDWORKS DrawCompare	11-19
Comparing 2 drawings	11-20
Viewing the differences	11-21
Switching between Additions and Removals	11-22
SOLIDWORKS Pack and Go	11-23
Opening an assembly document	11-23
Launching the Pack and Go utility	11-24
Setting up the parameters	11-24
Adding suffix	11-24
Exercise: Detailing the aluminum block	11-25
Opening a part document	11-25
Creating the drawing views	11-26
Inserting dimensions	11-27
Adding the instance callouts	11-28
Filling out the title block	11-29
Exercise: Other options in assembly drawings	11-31
Adding the exploded line sketch	11-32
Making assembly drawings	11-36
Adding balloons	11-38
Inserting a bill of materials	11-39
Formatting the BOM	11-40
Changing the custom properties	11-41
Hiding components in a drawing view	11-43
Other display options	11-46



**Lesson 12:**

<b>SOLIDWORKS Model Based Definition</b>	<b>12-1</b>
Model Based Definition – Prismatic parts	12-1
Opening a part document	12-1
Understanding the types of parts	12-2
Understanding the DimXpert tool	12-2
Setting up the DimXpert options	12-3
Creating an Auto Dimension Scheme	12-5
Adding datums	12-5
Selecting part and dimension type	12-6
Selecting for scope	12-6
Viewing the tolerance status	12-8
Opening another part document	12-9





Adding datums manually	12-9
Adding size dimensions	12-10
Checking the constraint status	12-11
Showing all annotations	12-12
Model Based Definition – Turned parts	12-13
Opening a part document	12-13
Adding datums	12-14
Selecting scope	12-15
Rearranging annotations	12-16
Recreating the basic dimensions	12-17
Opening another turned part	12-19
Using the plus and minus tolerance	12-19
Using polar	12-20
MBD – Capturing 3D Views	12-22
Showing DimXpert Annotations	12-22
Switching to 3D View tab	12-23
Capturing the 3D Views	12-24
Creating a zonal section	12-26
Capturing the zonal section view	12-27
Testing the 3D views	12-28
Publishing to 3D-PDF document	12-29
Selecting views for each sheet	12-30
Saving the 3D-PDF document	12-31
Publishing to eDrawing	12-32
Viewing the animation	12-33

Index and Glossary

Model library

The models and drawings used in this textbook were created by the author using SOLIDWORKS 2024-2025. All rights reserved.

