

SOLIDWORKS® 2025 Intermediate Skills

Expanding on Solids, Surfaces, Multibodies,
Configurations, Drawings, Sheet Metal
and Assemblies



Paul Tran CSWE, CSWI

Visit the following websites to learn more about this book:

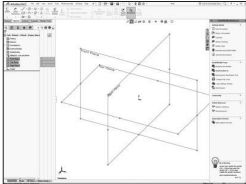


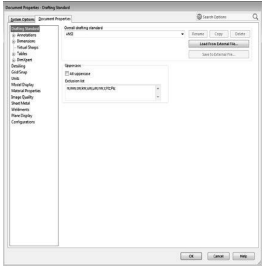
[amazon.com](https://www.amazon.com)

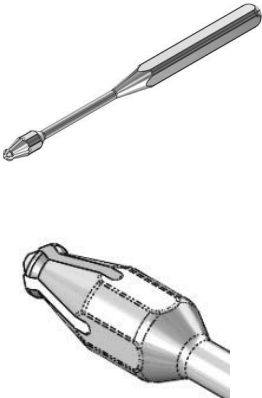
[Google books](https://books.google.com)

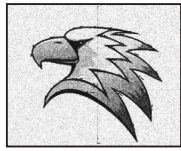
[BARNES & NOBLE](https://www.barnesandnoble.com)

TABLE OF CONTENTS

	Introduction: SOLIDWORKS 2025 User Interface	XXI
	The 3 reference planes	XXII
	The toolbars	XXII
	The system feedback symbols	XXIV
	The status bar	XXIV
	2D sketch examples	XXV
	3D feature examples	XXVI

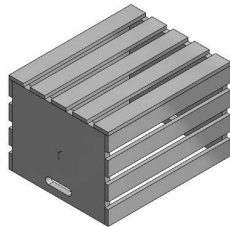
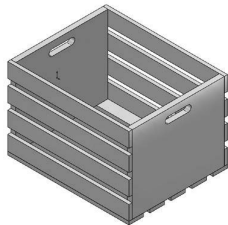
	Chapter 1: Document Properties	1-1
	Setting up the Document Template	1-1
	Different standards in the world	1-2
	Starting a new part document	1-3
	Setting the ANSI drafting standards	1-3
	Setting the dimension options	1-4
	Setting the virtual sharp options	1-5
	Setting the units options	1-5
	Setting the image quality options	1-6
	Saving the settings as a Part Template	1-6
	Customizing Keyboard Shortcuts	1-7
Customizing Tool Buttons	1-12	

	Chapter 2: Sketching Skills	2-1
	Handle	2-1
	Tools Needed	2-2
	Starting a new part document	2-3
	Changing the System Options	2-3
	Creating the Parent Sketch	2-4
	Revolving the parent sketch	2-7
	Adding the tip detail	2-7
	Revolving the sketch	2-8
	Transitioning from line-to-arc	2-8
	Mirroring in sketch mode	2-9
	Adding dimensions	2-10
	Extruding a cut	2-10



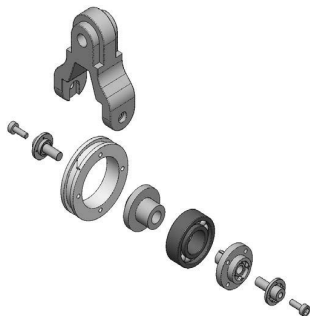
Creating a circular pattern	2-11
Adding other cut features	2-12
Creating another circular pattern	2-13
Adding a constant size fillet	2-14
Assigning material to the model	2-15
Calculating the mass of the model	2-16
Saving your work	2-16
Working with Sketch Pictures	2-17
Exercise 1: Working with sketch pictures & Using the spline tool	2-27
Exercise 2: Working with Sketch Picture Using Offset From Surface option	2-34
Using Contour Select Tool	2-37

Chapter 3:



Creating Multibody Parts	3-1
Wooden Crate	3-1
Tools needed	3-2
Starting a new part document	3-3
Sketching the first body profile	3-4
Extruding the first body	3-6
Copying the body	3-6
Creating the upper plank	3-7
Creating the first linear pattern	3-9
Mirroring the planks	3-10
Creating the lower plank	3-10
Creating the second linear pattern	3-12
Creating an exploded view	3-13
Collapsing the view	3-15
Saving your work	3-16
Exercise: Combining Multibody Parts	3-17

Chapter 4:

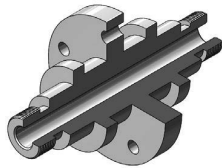


Working with Multibody Parts	4-1
Creating Mates & Exploded Views	4-1
Tools needed	4-2
Opening a part document	4-3
Creating an exploded view	4-4
Collapsing the solid bodies	4-6
Inserting another part	4-7
Constraining the solid bodies	4-8
Adding a concentric mate	4-8
Adding a coincident mate	4-9



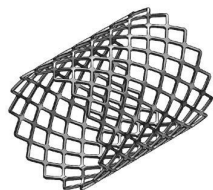
Creating a new mirror plane	4-10
Creating a mirror body	4-11
Inserting another part	4-13
Adding a concentric mate	4-14
Adding a coincident mate	4-14
Adding another instance of the bolt	4-15
Adding a concentric mate	4-15
Adding a coincident mate	4-16
Editing the exploded view	4-16
Saving your work	4-17
Working with Multibodies	4-19

Chapter 5: Revolved and Thread Features



Cylinder	5-1
Tools needed	5-2
Opening a part document	5-3
Creating a revolved feature	5-3
Adding chamfers	5-4
Creating the mounting holes	5-4
Adding threads	5-7
Adding threads to the opposite end	5-9
Creating a zonal section view	5-11
Saving your work	5-12
Exercise: Revolved & Threads	5-13

Chapter 6: Flex Bending



Spanner	6-2
Tools needed	6-2
Flex Bending - Part 1	6-3
Opening a part document	6-3
Creating the first flex bending feature	6-3
Creating the second flex bending feature	6-5
Flex examples	6-6
Flex twisting	6-6
Flex stretching	6-6
Flex tapering	6-7
Flex bending	6-7
Flex Bending - Part 2	6-8
Opening a part document	6-8
Creating a flex bending	6-8
Creating a linear pattern	6-10



Exercise: Flex Bending a Car Tire	6-11
Using the Deform feature	6-13
Opening a part document	6-13
Creating a Curve-to-Curve deform	6-13
Save and close	6-14
Opening a part document	6-15
Creating a Curve to Curve deform	6-15
Mirroring a surface body	6-16
Save and close all documents	6-16
Exercise: Deform using a 3D sketch	6-17
Exercise: Using sweep with profile twist	6-19
Exercise: Using sweep with deform	6-23

Chapter 7:

Sweep with Guide Curves

7-1

Plastic Bottle

7-1

Tools needed

7-2

Opening a part document

7-3

Creating the main body

7-3

Creating the first split line

7-5

Creating a face fillet

7-6

Creating the second split line

7-7

Creating the first offset surface

7-8

Creating a ruled surface

7-8

Creating the first knit surface

7-9

Adding the first fillet

7-9

Making the first cut with surface

7-10

Creating the first offset surface

7-11

Creating the second offset surface

7-11

Creating the second knit surface

7-12

Adding the second fillet

7-12

Making the second cut with surface

7-13

Adding the third fillet

7-14

Creating a shell

7-14

Adding the neck feature

7-15

Revolving the sketch

7-16

Creating a new plane

7-16

Creating a helix

7-17

 Sketching the thread profile

7-18

 Making the threads

7-19

 Rounding off the ends of threads

7-19

 Revolving the sketch

7-20

 Rounding off the opposite side

7-20

Sweep with Solid Body

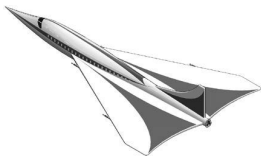
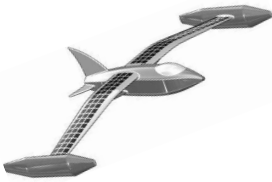
7-21



Exercise: Sweep Cut using a Solid Body	7-28
Exercise: Sweep Using a Sketch Profile	7-34

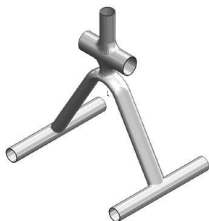
Chapter 8: Lofts and Boundaries 8-1

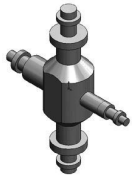
Solar Boat	8-1
Tools needed	8-2
Opening a part document	8-3
Creating a lofted feature	8-3
Creating a boundary feature	8-5
Creating the wing	8-6
Creating the wing support	8-7
Constructing the nose feature	8-8
Creating the horizontal tail fins	8-11
Creating the vertical tail fin	8-12
Creating a split line	8-13
Creating the canopy's first profile	8-14
Creating a new plane	8-15
Sketching the guide curve	8-15
Creating the canopy's second loft profile	8-16
Creating the canopy's third loft profile	8-16
Creating the canopy feature	8-17
Creating a mirror feature	8-17
Adding fillets to the main body	8-18
Adding fillets to the float and wing	8-18
Adding fillets to the ends of the floats	8-19
Adding fillets to the tail fins	8-19
Adding fillets to the ends of the fins	8-20
Creating a face fillet	8-20
Creating a split line for the solar panels	8-21
Changing color of the solar squares	8-22
Changing the edge display	8-23
Exercise: Surface & Solid Modeling	8-25
Exercise: Using Split Lines	8-33



Chapter 9: Surfaces and Patches 9-1

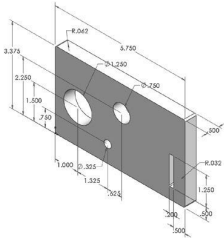
Welding Fixture	9-1
Tools needed	9-2
Opening a part document	9-3
Creating a swept surface	9-3
Creating the first extruded surface	9-4
Creating the second extruded surface	9-4





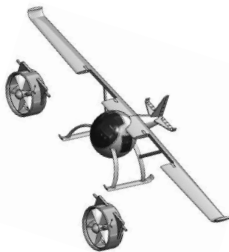
Creating the third extruded surface	9-5
Creating the first trimmed surface	9-5
Creating the second trimmed surface	9-6
Creating the third trimmed surface	9-7
Creating a lofted surface	9-9
Creating the first boundary surface	9-10
Creating the second boundary surface	9-11
Creating the first filled surface	9-12
Creating the second filled surface	9-13
Creating a face fillet	9-14
Knitting the surfaces	9-15
Thickening the surface model	9-16
Creating a section view	9-17
Changing the edge display	9-18
Exercise: Surface Modifications	9-19

Chapter 10:

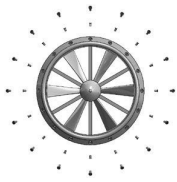


Configure Features	10-1
Wooden Crate	10-1
Tools needed	10-2
Opening a part document	10-3
Configuring features	10-3
Saving the table	10-5
Adding a new configuration	10-5
Viewing the new configuration	10-6
Adding more configurations	10-7
Renaming a configuration	10-9
Inserting a design table	10-10
Exercise: Design Tables & Tabulated Tables	10-12

Chapter 11:



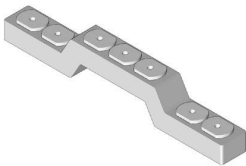
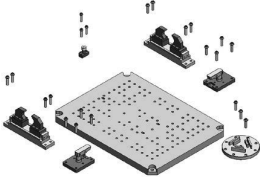
Assembly Motions & Mates	11-1
HeliDrone	11-1
Tools needed	11-2
Opening an existing assembly document	11-3
Using the width mate	11-3
Adding a concentric mate	11-4
Adding another concentric mate	11-6
Testing the assembly motions	11-6
Adding a limit-angle mate	11-7
Adding a parallel mate	11-8
Adding a gear mate	11-9
Testing the assembly motions	11-10



Radial Explode	11-11
Opening an existing assembly	11-11
Creating the first pattern driven	11-11
Creating the second pattern driven	11-12
Creating the first radial exploded view	11-13
Creating the second radial exploded view	11-13
Verifying the exploded view	11-14
Exercise: Assembly Motions	11-15

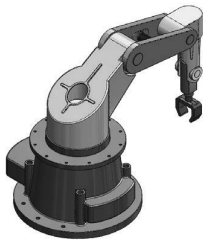
Chapter 12: Using Smart-Mates 12-1

Fixture Assembly	12-1
Tools Needed	12-2
Opening an existing assembly document	12-3
Enabling the selection options	12-3
Exploring the Smart-Mate options	12-4
Using Smart-Mate Concentric	12-5
Creating a Smart-Mate Concentric & Coincident	12-6
Repeating the previous mate	12-7
Mating other components	12-8
Checking the status of the components	12-9
Switching configuration	12-9
Creating an instance of the bolt	12-10
Creating another instance of the bolt	12-11
Adding more bolts	12-12
Repeating	12-13
Using Mate Controller	12-15
Using copy with mates	12-25



Chapter 13: Introduction to Top Down Assembly 13-1

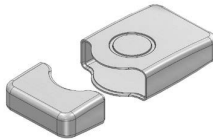
Car Remote Control Housing	13-1
Tools Needed	13-2
Opening a part document	13-3
Making an assembly from part	13-3
Placing the first component	13-4
Creating a new part	13-4
Converting the entities	13-5
Extruding the sketch	13-6
Adding the fillet	13-6
Shelling the part	13-7
Hiding a component	13-7
Adding features to the part	13-8
Creating offset entities	13-9





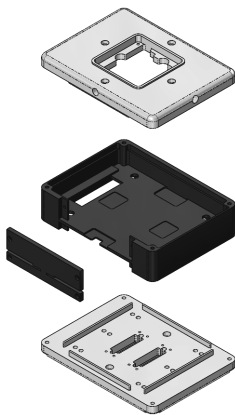
Extruding the sketch	13-10
Adding the fillet	13-10
Showing a component	13-11
Creating a section view	13-11
Applying dimension changes	13-12
Creating an exploded view	13-14
Playing the animation	13-15
Changing the display mode	13-16
Creating a Flat Spring Assembly	13-17
Exercise: Spring Assembly	13-29

Chapter 14: Using the Lip & Groove Options 14-1

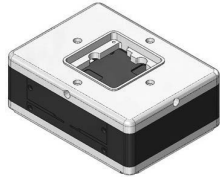


Lesson overview	14-1
Tools Needed	14-2
Using the Lip & Groove Options	14-3
Opening a part document	14-4
Editing the housing	14-4
Creating a section view	14-7
Using the Mounting Boss Tool	14-8
Opening an assembly document	14-9
Creating a mounting boss-hole feature	14-9
Setting the parameters	14-9
Hiding the Upper Half body	14-11
Creating a mounting boss-pin feature	14-12
Creating a section view	14-14
Repeating	14-14

Chapter 15: Assembly Drawings & BOM 15-1

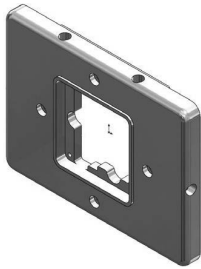


Aluminum Enclosure	15-1
Tools needed	15-2
Starting a new drawing document	15-3
Selecting the ANSI standard sheet size	15-3
Switching to ANSI standards	15-4
Using the view palette	15-5
Inserting a Bill of Materials	15-6
Modifying the BOM's Row Height	15-8
Adding a new column	15-8
Customizing the new column	15-9
Changing the color of the paper	15-10
Adding balloons	15-11
Adding an isometric view	15-12
Changing the display of a drawing view	15-13

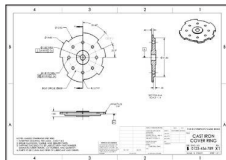
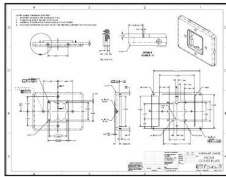


Editing the sheet format	15-13
Switching back to the sheet	15-16
Reference reading: GD&T	15-18
Form examples	15-18
Orientation examples	15-19
Profile examples	15-19
Runout examples	15-20
Location examples	15-20
ASME – Y14.5 Symbol descriptions	15-22
Feature control frames	15-25
MMC maximum material condition	15-26
LMC least material condition	15-26

Chapter 16: Drawings & Detailing 16-1



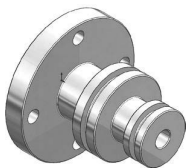
Front Cover Plate	16-1
Tools needed	16-2
Opening a part document	16-3
Creating the drawing views	16-4
Changing to phantom line style	16-6
Creating a partial section view	16-7
Changing the hatch pattern	16-8
Creating a detail view	16-9
Inserting the model dimensions	16-10
Cleaning up the dimensions	16-11
Inserting dimensions to another view	16-12
Breaking the view alignment	16-13
Creating a projected view	16-14
Adding the centerline symbols	16-15
Adding datums	16-16
Adding a flatness tolerance	16-18
Adding a perpendicular tolerance	16-19
Copying the control frame	16-20
Modifying the geometric tolerance	16-21
Adding another position tolerance	16-22
Adding a symmetric tolerance	16-23
Adding a bilateral tolerance	16-23
Adding a limit tolerance	16-24
Adding a basic tolerance	16-24
Adding general notes	16-25
Filling out the title block	16-26
Exercise: Creating a drawing from a model	16-29
Exercise: Attaching a note or symbol to a dimension	16-30

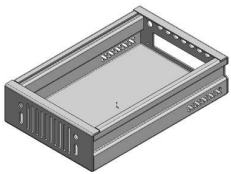


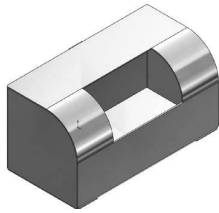
Drawing & Detailing Part 2	16-32
Opening a part document	16-33
Making drawing from part	16-33
Using the View Palette	16-34
Changing the Line Style	16-35
Creating a Section View	16-36
Modifying the crosshatch properties	16-37
Adding a Detail View	16-38
Modifying the Section Line Style	16-39
Inserting the Model Dimensions	16-40
Arranging dimension handles	16-41
Adding the number of instances	16-42
Using the Hole Callout	16-43
Adding reference dimensions	16-44
Adding Centerlines	16-44
Adding Center Marks	16-45
Modifying the hole callout	16-45
Modifying the instances	16-46
Adding Datum Features	16-47
Adding Geometric Tolerances	16-48
Adding Flag Notes	16-49
Adding General Notes	16-50
Filling out the Title Block	16-51
Exercise: Creating an engineering drawing	16-53



Chapter 17: SOLIDWORKS MBD 17-1

Introduction to Model Based Definition	17-1
Tools needed	17-2
Prismatic Parts	17-3
Opening a part document	17-3
Enabling SOLIDWORKS MBD	17-3
Setting the options	17-3
Adding datums	17-5
Using scope	17-6
Showing the constraint status	17-7
Adding the size dimensions	17-8
Showing the tolerance status	17-8
Exercise: Adding the Size and Location Dimensions	17-9
Turned Parts	17-13
Capturing 3D Views	17-19
Publishing PDF and eDrawing Files	17-23
3D PDF Template Editor	17-30



	Chapter 18: Sheet Metal Parts	18-1
	Hard Drive Enclosure	18-1
	Tools needed	18-2
	Starting a new part document	18-3
	Creating the Base flange	18-4
	Creating a cut feature	18-5
	Creating the first edge flange	18-6
	Creating the second edge flange	18-9
	Copying and pasting a sketch	18-11
	Adding more cuts	18-13
	Creating a library feature cut	18-15
	Mirroring a feature	18-17
	Toggling the flat display	18-18
	Creating the flat pattern	18-19
	Accessing the sheet properties	18-20
Sheet metal parts – Multibody Design	18-21	
Using FeatureWorks – Feature Recognition	18-37	



	Chapter 19: Plastic Parts	19-1
	Plastic Part_Design1	19-1
	Tools Needed	19-2
	Making the base feature	19-3
	Creating a cut feature	19-4
	Adding the raised features	19-5
	Adding fillets	19-6
	Shelling the model	19-6
	Adding the interlock feature	19-7
	Creating a face fillet	19-8
Adding another fillet	19-9	
Creating the side holes	19-10	
	Plastic Part_Design2	19-11
	Extruding the base feature	19-11
	Making the upper cut	19-12
	Creating a new plane	19-14
	Sketching the button holes	19-14
	Making the cut	19-15
	Shelling the model	19-16
	Adding a step cut	19-17
Making the interlock feature	19-18	

Extruding a boss feature	19-19
Adding a fillet	19-20
Creating the flat-cable outlet cut	19-20
Creating the LED holes	19-21
Adding the mounting bosses	19-22
Adding the mounting holes	19-23
Adding a fillet	19-24

Chapter 20: Casted Parts 20-1

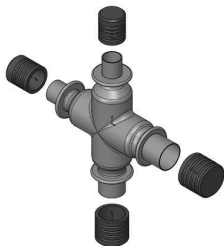


Casted Upper Housing	20-1
Tools needed	20-2
Adding the mounting tab	20-4
Inserting a counterbore hole	20-5
Circular Patterning the mounting tab	20-5
Creating a large side-tab	20-6
Adding a drilled hole	20-7
Creating a side wall	20-8
Adding drafts	20-9
Mirroring the side wall	20-9
Mirroring multiple features	20-10
Creating a new plane	20-10
Creating a rib feature	20-11
Circular patterning the rib feature	20-12
Adding a fillet	20-12

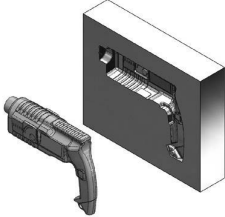


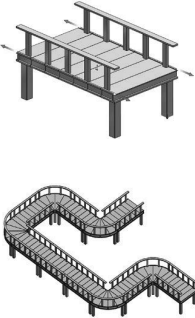
Casted Valve Body	20-15
Viewing the part/child relationships	20-16
Exercise: Casted Bracket	20-29
Exercise: Converting Catia or STL files	20-37


Chapter 21: Smart Components 21-1



Using Auto Size & Configurator Table	21-1
Tools needed	21-2
Opening a part document	21-3
Showing the dimensions and their names	21-3
Splitting the FeatureManager tree	21-4
Adding a new configuration	21-4
Creating mate references	21-6
Testing the mate references	21-7
Making a smart component	21-8
Testing the smart component	21-9
Adding other instances of the cap	21-10

	Chapter 22: Using Subtract & Intersect Tools	22-1
	Simple Cavity	22-1
	Opening a part document	22-3
	Scaling the part	22-3
	Extruding the mold block	22-3
	Assigning material	22-4
	Copying a solid body	22-4
	Creating the cavity	22-5
	Separating the solid bodies	22-6
	Using the intersect tool	22-7
Exercise: Creating a Cavity with Combine Subtract	22-10	

	Chapter 23: Using Magnetic Mates	23-1
	Deck Assembly	23-1
	Tools needed	23-2
	Publishing an asset	23-4
	Opening another part document	23-6
	Defining another asset publisher	23-7
	Opening an assembly document	23-8
	Adding the section1 component to the assembly	23-9
	Adding another instance of section1	23-10
	Adding more instances	23-11

	Chapter 24: Hybrid Modeling	24-1
	Remote Control	24-1
	Tools needed	24-2
	Extruding the first surface	24-3
	Extruding the second surface	24-4
	Trimming the surfaces	24-4
	Thickening the surfaces	24-5
	Creating a split line feature	24-5
	Adding draft	24-6
	Adding a variable size fillet	24-7
	Shelling the solid body	24-8
	Cutting the solid body	24-8
	Saving the upper half	24-9
	Saving the lower half	24-9
	Flipping the cut direction	24-9
Inserting the top half	24-10	
Creating the cut for the keypad	24-11	



Separating the two halves	24-12
Changing appearance	24-12
Exercise: Loft with guide curves	24-15
Exercise: Using boundary solid	24-17
Exercise: Using boundary surface	24-19

Glossary

Index

SOLIDWORKS 2025 Quick-Guides

