

SOLIDWORKS® 2025 Advanced Techniques

Mastering Parts, Surfaces, Sheet Metal,
SimulationXpress, Top Down Assemblies,
Core & Cavity Molds



Paul Tran CSWE, CSWI

Visit the following websites to learn more about this book:



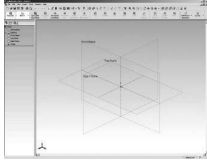
[amazon.com](https://www.amazon.com)

[Google books](https://books.google.com)

[BARNES & NOBLE](https://www.barnesandnoble.com)

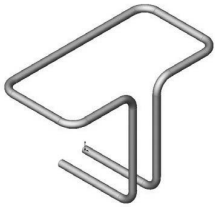
Table of Contents

Introduction SOLIDWORKS 2025 User Interface	21
The 3 references planes	22
The toolbars	22
The system feedback symbols	24
The status bar	24
2D sketch examples	25
3D feature examples	26



Advanced Modeling Topics

Chapter 1	Introduction to 3D Sketch	1-1
	Tools Needed	1-2
	Creating a 3D Sketch	1-3
	Completing the profile	1-4
	Adding dimensions	1-5
	Adding the sketch fillets	1-6
	Creating the swept feature	1-7
	Questions for review	1-8
	Exercise: Sweep with 3D Sketch	1-9
	Exercise: 3D Sketch & Planes	1-10
	Exercise: 3D Sketch & Composite Curve	1-17



Chapter 2	Plane Creation	2-1
	Advanced Topics	2-1
	Tools Needed	2-2
	Revolving the base	2-3
	Creating a tangent plane	2-4
	Creating a flat surface	2-5
	Extruding a cut	2-6
	Creating an at-angle plane	2-7
	Showing the sketches	2-8
	Creating a coincident plane	2-9
	Creating a parallel plane	2-10
	Creating a recess feature	2-11
	Creating an offset-distance plane	2-12
	Creating the bore holes	2-12
	Creating a perpendicular plane	2-13



Creating the side-grips	2-14
Creating a circular pattern of the grips	2-15
Creating a Mid-Plane	2-17
Adding fillets to all edges	2-19
Questions for Review	2-20
Exercise: Creating New Planes	2-22

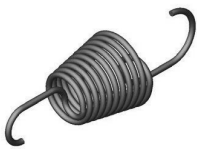
Chapter 3 Advanced Modeling 3-1

5/8” Spanner	3-1
Tools needed	3-2
Opening the spanner sketch document	3-3
Creating the transition sketch	3-4
Creating a new work plane	3-6
Creating the closed-end sketch	3-7
Extruding the closed-end feature	3-7
Adding a 12-sided polygonal hole	3-8
Creating the recess profile	3-9
Mirroring the recessed feature	3-10
Adding fillets	3-11
Adding text	3-13
Extruding the text	3-14
Questions for Review	3-17
Exercise: Circular text wraps	3-19



Chapter 4 Sweep with Composite Curves 4-1

Helical Extension Spring	4-2
Tools needed	4-2
Converting to a helix	4-3
Creating a 2-degree plane	4-4
Sketching the large loop	4-5
Sketching the large hook	4-5
Creating a parallel plane	4-6
Creating a Composite Curve	4-8
Sweeping the profile along the path	4-11
Other spring examples	4-12
Questions for review	4-13
Exercise: Circular Spring – 180 deg.	4-14



Using Variable Pitch	4-17
Multi-Pitch Spring with Closed Ends	4-18
Tools Needed	4-18
Creating the base sketch	4-19
Creating a helix using variable pitch	4-19





Sweeping the profile along the path	4-21
Creating a trimmed sketch	4-22
Extruding a cut	4-22
Questions for Review	4-23
Exercise: Using Equation Driven Curve	4-24
Exercise: Projected Curve & Composite Curve	4-30

Chapter 5 Advanced Modeling with Sweep & Loft 5-1

Water Pump Housing 5-2



Tools Needed	5-2
Understanding the draft options	5-3
Extruding the base with draft	5-4
Sketching the upper inlet port	5-5
Revolving the upper inlet port	5-5
Adding fillets	5-6
Creating offset-distance planes	5-7



Creating a loft feature	5-10
-------------------------	------

Creating the mounting bosses	5-11
------------------------------	------

Sketching the rear inlet port	5-12
-------------------------------	------

Revolving the rear inlet port	5-12
-------------------------------	------

Adding face Fillets	5-13
---------------------	------

Mirroring the rear inlet port	5-15
-------------------------------	------

Shelling the part	5-16
-------------------	------



Adding a rib	5-17
--------------	------

Mirroring the rib	5-18
-------------------	------

Adding fillets	5-19
----------------	------

Exercise: Loft without guide curves	5-21
-------------------------------------	------

Exercise: Loft with guide curves	5-23
----------------------------------	------

Chapter 6 Loft vs. Sweep 6-1

Water Meter Housing 6-2



Tools Needed	6-2
--------------	-----

Sketching the loft profile	6-3
----------------------------	-----

Constructing loft profiles / features	6-5
---------------------------------------	-----

Creating the inlet feature	6-6
----------------------------	-----

Constructing the centerline parameter	6-10
---------------------------------------	------

Creating the outlet loft feature	6-11
----------------------------------	------

Shelling the part	6-13
-------------------	------

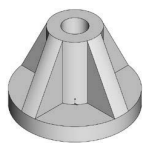
Extruding the left / right brackets	6-14
-------------------------------------	------

Constructing the upper ring	6-15
-----------------------------	------

Adding fillets	6-17
----------------	------

Adding chamfers	6-18
-----------------	------

Questions for Review	6-19
----------------------	------





Exercise: Loft	6-20
Exercise: Loft vs. boundary	6-23
Exercise: Mirror using two planes	6-26
Exercise: Tangent vs. curvature	6-27

Chapter 7

Loft with Guide Curves 7-1

Waved Washer 7-2

Tools Needed 7-2

Creating the construction profile 7-3

Creating an offset distance plane 7-4

Positioning the derived sketch 7-5

Creating a curve through reference points 7-5

Sketching the loft sections 7-7

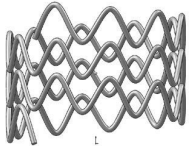
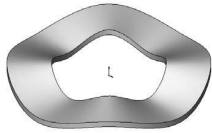
Creating the loft section using derived sketch 7-7

Creating a loft with guide curve 7-10

Hiding the construction sketches 7-11

Questions for review 7-12

Exercise: Using Curve Driven Pattern 7-13



Advanced Sweep 7-19

3D Sketch Sweep Path 7-20

Tools Needed 7-20

Creating the sweep path 7-21

Creating the sweep profile 7-22

Creating a sweep feature 7-23

Creating a circular Sketch pattern 7-25

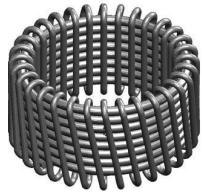
Converting to construction geometry 7-26

Creating a derived sketch 7-27

Creating a 3D sketch 7-28

Creating the sweep feature 7-32

Exercise: Using Curve Through Reference Points 7-33



Chapter 8

Using Surfaces 8-1

Advanced Modeling 8-2

Tools Needed 8-2

Constructing a new work plane 8-3

Sketching the 1st profile 8-3

Creating a surface-loft 8-6

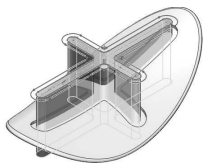
Splitting the surface 8-7

Deleting surfaces 8-8

Thickening the surface 8-9

Calculating the angle between the faces 8-10

Adding a full round fillet 8-12





Sketching the slot contours	8-13
Extruding cut the contour	8-15
Questions for Review	8-17



Lofted Surface	8-19
Creating new offset planes	8-19
Sketch the first profile	8-20
Selecting the loft profiles	8-21
Lofting between the profiles	8-22
Creating a revolved sketch	8-23
Copying the revolved surface	8-24
Trimming the base part	8-25
Hiding the surfaces	8-25
Patching the right side opening	8-26
Creating a Surface-Knit	8-29
Adding fillets	8-30
Creating a solid from the surface model	8-31
Removing the upper half	8-32
Questions for Review	8-36
Exercise: Loft & Delete Face	8-37



Chapter 9 **Offset Surface & Ruled Surface** **9-1**







Tools Needed	9-2
Using offset & ruled surface options	9-3
Creating the base loft	9-4
Creating split lines	9-5
Creating offset surfaces	9-6
Creating a ruled surface	9-7
Knitting the 2 surfaces	9-8
Showing the solid body	9-10
Creating the surface cut	9-10
Exercise: Using Loft	9-13



Exercise: Advanced Surfacing Techniques	9-15
Exercise: Using Split	9-25
Creating a split line	9-25
Making an offset surface	9-26
Adding a ruled surface	9-26
Deleting a surface	9-27
Trimming surfaces	9-27
Knitting the surfaces	9-28
Adding fillets	9-29

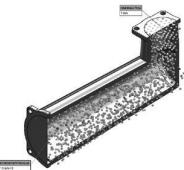


	<p>Chapter 10 Advanced Surfaces 10-1</p> <p>Computer Mouse 10-2</p> <p>Tools Needed 10-2</p> <p>Sketching the profiles 10-3</p> <p>Extruding a surface 10-4</p> <p>Trimming the surfaces 10-5</p> <p>Mirroring the surfaces 10-6</p> <p>Creating the lower sketches 10-7</p> <p>Creating a new plane 10-9</p> <p>Making a 3-Point Arc 10-9</p> <p>Creating a planar surface 10-12</p> <p>Creating a knit surface 10-13</p> <p>Using Filled Surfaces 10-15</p> <p>Patch with Curvature Controls 10-15</p> <p>Tools Needed 10-16</p> <p>Enabling the surfaces toolbar 10-17</p> <p>Creating a planar surface 10-18</p> <p>Creating a surface fill with tangent control 10-18</p> <p>Creating a surface fill with curvature control 10-20</p> <p>Knitting all surfaces 10-21</p> <p>Patch Types 10-22</p> <p>Questions for Review 10-24</p> <p>Using Ruled Surfaces 10-25</p> <p>Creating a split line 10-25</p> <p>Creating an offset surface 10-26</p> <p>Adding a ruled surface 10-26</p> <p>Knitting and cutting the surfaces 10-27</p> <p>Shelling the model 10-29</p>	
		
		
		
<p>Chapter 11 Surfaces vs. Solid Modeling 11-1</p> <p>Safety Helmet 11-2</p> <p>Tools Needed 11-2</p> <p>Constructing the body of Helmet 11-3</p> <p>Creating a new work plane 11-4</p> <p>Sketching the sweep-profile 11-4</p> <p>Creating the sweep path 11-5</p> <p>Adding a planar surface 11-6</p> <p>Knitting the three surface bodies into one 11-6</p> <p>Creating a section view 11-7</p> <p>Adding an extruded cut feature 11-7</p> <p>Adding a revolve cut feature 11-9</p>		
		



Adding the side cut features	11-10
Creating the Cutout slot	11-11
Creating the sweep cut	11-13
Adding fillets	11-13
Exercise: Helmet_Surfaces	11-15
Exercise: Advanced Loft – Turbine Blades	11-26
Exercise: Advanced Sweep – Candle Holder	11-27
Advanced: Final Exam	11-34

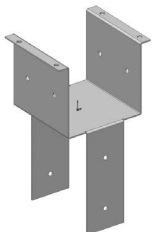
Chapter 12 SimulationXpress 12-1



Using the Analysis Wizard	12-2
Tools Needed	12-2
Starting SimulationXpress	12-3
Setting up the units	12-4
Adding a fixture	12-5
Applying a force	12-7
Selecting the material	12-8
Analyzing the model	12-9
Viewing the Results	12-10
Creating the report	12-12
Generating the eDrawings file	12-16
Questions for Review	12-19
Exercise 1: SimulationXpress: Force	12-20
Exercise 2: SimulationXpress: Pressure	12-21
Exercise: Using SOLIDWORKS FlowXpress	12-23

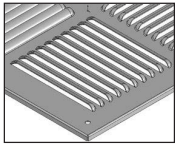
Sheet Metal Topics

Chapter 13 Sheet Metal Parts 13-1



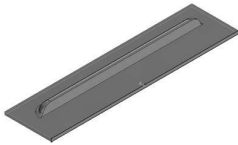
Post Cap	13-2
Tools Needed	13-2
Starting with the Base Profile	13-3
Extruding the Base Flange	13-3
Creating an Edge Flange	13-4
Editing the Edge Flange Profile	13-5
Viewing the Flat Pattern	13-6
Changing the Fixed Face	13-6
Creating a Sketch Bend	13-7
Adding Holes	13-9
Switching to the Flat Pattern	13-12

Using Sheet Metal Costing	13-13
Inputting the information	13-14
Setting the Baseline	13-15
Questions for Review	13-17



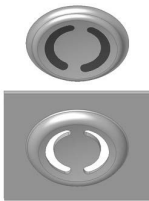
Vents **13-18**

Tools Needed	13-19
Sketching the first profile	13-20
Extruding the Base-Flange	13-21
Creating the Miter-Flanges	13-22
Flattening the Part	13-24
Creating a new Forming Tool	13-25
Other Rectangle Options	13-26
Extruding the Base	13-27
Building the louver body	13-27
Creating the Positioning Sketch	13-31
Saving the Form Tool	13-33
Applying the Form Tool	13-34
Positioning the Form Tool	13-35
Adding a mounting hole	13-36
Creating a Linear Pattern	13-37
Creating an Axis	13-38
Creating a Circular Pattern	13-39
Questions for Review	13-40



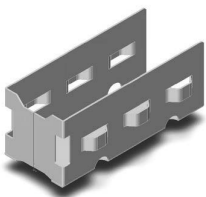
Chapter 14 Sheet Metal Forming Tools **14-1**


Button with Slots	14-2
Tools Needed	14-2
Creating the Base Block	14-3
Revolving the Body	14-4
Sketching Slot Profiles	14-5
Creating the Split Lines	14-7
Adding more fillets	14-9
Inserting the forming tool feature	14-9
Saving the forming tool	14-10
Questions for Review	14-12
Exercise: Creating a custom forming tool	14-13



Designing Sheet Metal Parts – Tool Holder **14-23**

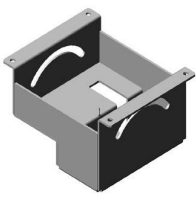
Tools Needed	14-24
Starting with the Base Sketch	14-25
Creating an Edge Flange	14-26
Adding Cut features	14-27



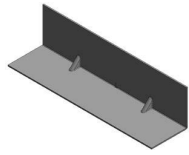
	Extruding a cut	14-27
	Using the Unfold Command	14-28
	Using the Fold Command	14-30
	Inserting a Sheet Metal Forming Tool	14-33
	Locating the Bridge Lance	14-35
	Creating the Linear Pattern of the Bridge Lance	14-36
	Mirroring the Body	14-37
	Adding Chamfers	14-40
	Switching to the Flat Pattern	14-41
	Questions for Review	14-42

Chapter 15 Sheet Metal Conversions 15-1


From IGES to SOLIDWORKS 15-2

	Tools Needed	15-2
	Opening an IGES Document	15-3
	Creating the Rips	15-4
	Inserting the Sheet Metal Parameters	15-5
	Adding Fillets	15-6
	Switching to a Flat Pattern	15-7
	Questions for Review	15-8

Sheet Metal Gussets 15-9

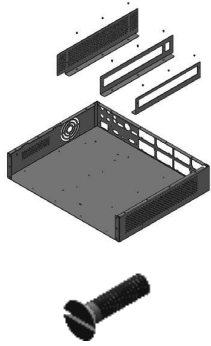
	Opening a sheet metal document	15-9
	Creating a gusset	15-9
	Viewing the resulted gusset	15-11
	Mirroring the gusset	15-12
	Exercise: Hem & Vent Features	15-13

Flat Pattern Stent 15-16

	Tools Needed	15-17
	Converting to Sheet Metal	15-19
	Unfolding the Part	15-19
	Adding the Sketch Pattern	15-20
	Folding the Part	15-22
	Creating a new Configuration	15-23
	Adding Fillets	15-23
	Switching to Flatten Mode	15-24
	Questions for Review	15-25
	Exercise: Screen Mesh - Sheet Metal Approach	15-26

Chapter 16 Working with Sheet Metal STEP Files 16-1

Tools Needed	16-2
Opening an Assembly Step File	16-3



Mating the components	16-4
Adding the Sheet Metal tool tab	16-7
Inserting Sheet Metal parameters	16-8
Viewing the Flat Pattern	16-9
Converting other components	16-9
Using the Hole Series	16-11
Using the Hole Wizard	16-13
Adding the Smart Fasteners	16-15
Creating an Exploded View	16-17

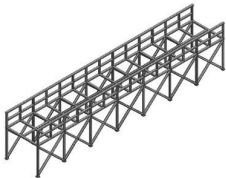


Adding Parts to the Toolbox Library	16-18
Starting the Toolbox Settings Utility	16-18
Activating Toolbox	16-21
Locating the new part	16-22
Viewing the new part	16-22
Adding a Part Number and Description	16-23
Sheet Metal Assembly	16-24

Chapter 17 Advanced Weldments 17-1

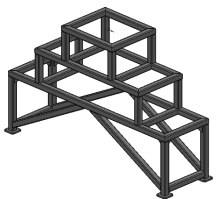
Weldments Platform 17-2

Tools Needed	17-2
Adding the weldments toolbar	17-3
Adding the structural members	17-4
Viewing the overlapped areas	17-8
Trimming the overlapped areas	17-9
Updating the cut list	17-12




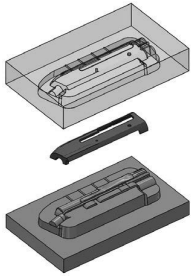
Using Weldments – Structural Members 17-14

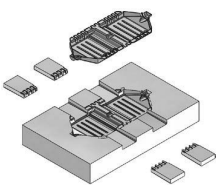
Enabling the Weldment Toolbar	17-14
Adding Structural Members	17-15
Setting the Corner Treatments	17-15
Adding Structural Members to Contiguous Groups	17-16
Adding Structural Members to the Parallel Groups	17-17
Trimming the Structural Members	17-19
Adding the foot pads	17-26
Adding the Gussets	17-27
Adding the Fillet Beads	17-29
Viewing the Weldment Cut List	17-31
Updating the Cut List	17-32
Creating a drawing	17-33



Mold Tools Design Topics

	Chapter 18 Creating a Core and Cavity	18-1
	Linear Parting Lines	18-2
	Tools Needed	18-2
	Opening an existing Parasolid document	18-3
	Creating the Parting Lines	18-4
	Creating the Shut-Off Surfaces	18-5
	Creating the Parting Surfaces	18-6
	Sketching the profile of the mold blocks	18-7
	Creating the Tooling Split	18-8
	Saving the bodies as part files	18-10
	Separating the 2 blocks	18-11
	Exercise: Linear Parting Lines	18-13
Questions for Review	18-19	

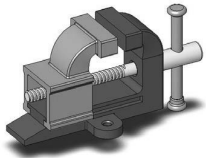
	Chapter 19 Non-Planar Parting Lines	19-1
	Mold-Tooling Design	19-2
	Tools Needed	19-2
	Enabling the Mold Tools toolbar	19-3
	Creating the Parting Lines	19-4
	Creating the Shut-Off Surfaces	19-5
	Creating the Parting Surfaces	19-6
	Creating a Ruled Surface	19-7
	Creating the patches	19-9
	Knitting the surfaces	19-13
	Trimming the bottom of the ruled surface	19-15
	Creating the Tooling Split sketch	19-16
Separating the solid bodies	19-18	
Making the body transparent	19-19	

	Creating Slides and Cores	19-21
	Tools Needed	19-22
	Opening a part document	19-23
	Analyzing the undercuts	19-23
	Analysis parameters explained	19-24
	Scaling the part	19-25
	Creating the parting lines	19-26
	Creating the parting surfaces	19-27
	Creating a new sketch	19-28
	Creating the tooling split	19-29
	Finalizing the block sizes	19-29

Renaming the bodies and assigning materials	19-32
Creating the front slide core	19-32
Creating the back slide core	19-34
Creating an exploded view	19-35

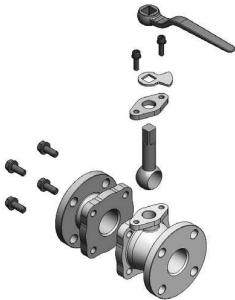
Chapter 20 Top Down Assembly – Part 1 20-1

Miniature Vise	20-2
Tools Needed	20-2
Creating the Base part	20-3
Adding the side flanges	20-5
Creating an offset distance plane	20-7
Creating the 3D Guide Curves	20-9
Creating the fixed jaw clamp	20-11
Creating a new component: The slide jaw	20-14
Using the offset entities command	20-15
Sketching the Guide Curve	20-20
Creating the clamp block	20-22
Extruding the clamp block	20-23
Creating the Internal threads	20-26
Creating a Section View	20-29
Questions for Review	20-32



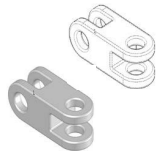
Chapter 21 Top-Down Assembly – Part 2 21-1

Water Control Valve	21-2
Tools Needed	21-2
Starting a New Assembly Template	21-3
Creating the 1st Component	21-4
Adding the Inlet Flange	21-5
Adding the Mounting Holes	21-6
Adding Chamfers and Fillets	21-8
Saving as Virtual Component	21-10
Creating the 2nd Component	21-10
Creating the Transition Body	21-12
Adding another mounting Flange	21-13
Adding an Offset-Distance plane	21-14
Exiting the Edit Component Mode	21-20
Applying dimension changes	21-20
Viewing the External Reference Symbols	21-22
Inserting other components	21-23
Questions for Review	21-25

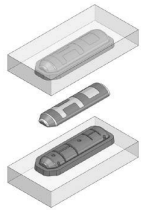


Chapter 22 External References & Repair Errors 22-1

External Reference Symbols	22-2
----------------------------	------



Understanding & Removing External References	22-3
Removing External References	22-3
Understanding the External Symbols	22-4
Repairing the Sketches	22-5
Rebuilding the model	22-7
Questions for Review	22-8
Understanding and Repairing Part Errors	22-9
Repair Errors & External References	22-16



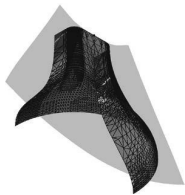
Final Exam_1 of 2_Handle Mold	22-24
Final Exam_2 of 2_Mouse Mold	22-28

Chapter 23 Using Appearances **23-1**

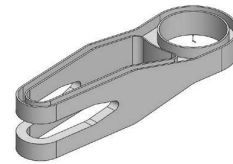
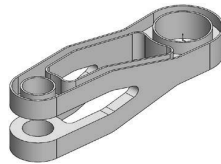


Modeling diamond knurls	23-1
Applying the knurl appearance	23-5
Applying wire mesh appearance	23-8
Applying the Car-Paint Appearance	23-11
Flatten Surfaces	23-16
Exercise: Flattening a shoe sole	23-20

Certification Practice for the CSWP Mechanical Design Exam **24-1**



Challenge I: Part Modeling & Modifications	24-2
Challenge II: Part Modifications & Configurations	24-18
Challenge III: Bottom Up Assembly & Mates	24-39



Glossary, Index, and SOLIDWORKS 2025 Quick-Guide

Quick Reference Guide to SOLIDWORKS 2025 Command Icons and Toolbars.

