

# Certified SOLIDWORKS® Professional Advanced Preparation Material

Sheet Metal, Weldments, Surfacing,  
Mold Making and Drawing Tools

SOLIDWORKS® 2025



Paul Tran CSWE, CSWI

Visit the following websites to learn more about this book:



[amazon.com](https://www.amazon.com)

[Google books](https://books.google.com)

[BARNES & NOBLE](https://www.barnesandnoble.com)

# TABLE OF CONTENTS

---



---

## CSWPA – Drawing Tools

### Chapter 1: Advanced Drawing Tools 1-1



#### Challenge 1: Drawing Views Creation 1-3

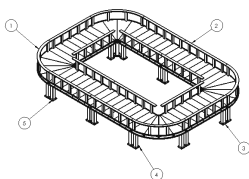
Open the part document: Plastic Bottle	1-3
Transferring to a drawing	1-3
Changing the paper size	1-4
Adding the drawing view	1-5
Creating a section view	1-6
Measuring the surface perimeter	1-7
Creating an aligned section view	1-7
Measuring the surface perimeter	1-9

#### Challenge 2: Changing View Orientation 1-10

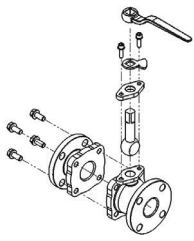


Open the assembly document: Latch Assembly	1-10
Creating a reference sketch	1-11
Modifying the arrow keys angle	1-12
Saving a new named-view	1-15
Making a drawing from assembly	1-16
Adding the first drawing view	1-17
Creating the projected drawing views	1-18
Adding reference lines	1-19
Adding an angular dimension	1-20
Creating a section view	1-21
Converting entities	1-22
Creating an alternate section view	1-23

#### Challenge 3: Assembly Drawings 1-24



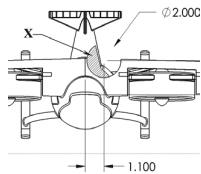
Open the assembly drawing: Deck Assembly	1-24
Inserting the balloons	1-25
Adding a bill of materials	1-26
Changing custom properties	1-27



Adding new columns	1-28
Creating a linked note	1-30

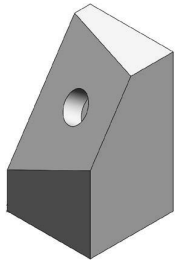
**Challenge 4: Hide & Show Components** 1-32

Open the assembly drawing: Water Valve Assembly	1-32
Locating the hidden components	1-33
Showing the hidden components	1-33
Adding an angular dimension	1-34



**Challenge 5: Broken Out Section Views** 1-35

Open the assembly drawing: Helidrone	1-35
Creating a broken-out section view	1-36
Inserting the model dimensions	1-37
Locating the new dimensions	1-37

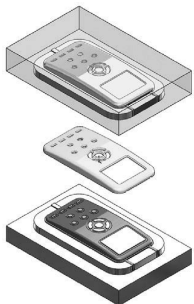


**Challenge 6: Custom Drawing Views** 1-38

Open the part document: Block	1-38
Changing the arrow keys angle	1-38
Changing the view orientation	1-39
Making a drawing from part	1-40
Adding the drawing views	1-40
Inserting the projection dimensions	1-41
Creating a section view	1-41
Finding the surface perimeter	1-42

# CSWPA – Mold Making

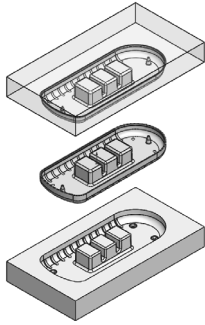
## Chapter 2: Advanced Mold Making 2-1



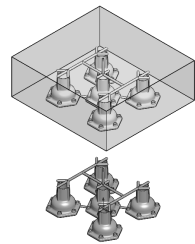
**Challenge 1: Interlock Surface** 2-2

Open the document: Interlock Surface	2-3
Enabling the mold tools	2-3
Selecting the parting line	2-4
Creating the shut-off surfaces	2-5
Creating the parting surfaces	2-6
Adding a new plane	2-7
Sketching the mold profile	2-8
Performing a tooling split	2-9
Separating the solid bodies	2-10

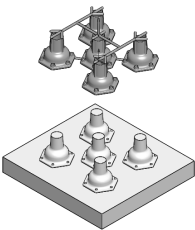
Assigning material	2-11
Calculating the mass	2-11



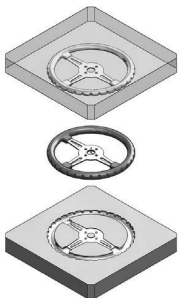
<b>Challenge 2: Parting Line Creation</b>	<b>2-13</b>
Open the document: Parting Line Creation	2-14
Creating the parting line	2-14
Creating the shut-off surfaces	2-15
Creating the Parting surfaces	2-16
Sketching the mold block profile	2-17
Inserting a tooling split	2-18
Separating the mold blocks	2-19
Assigning material	2-20
Calculating the mass	2-20

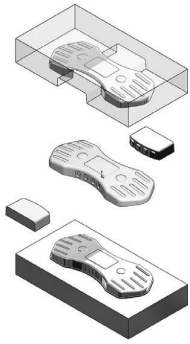


<b>Challenge 3: Runners &amp; Sprue</b>	<b>2-22</b>
Open the document: Runners & Sprue	2-23
Creating the shut-off surfaces	2-24
Creating the parting surfaces	2-25
Sketching the preliminary shape of the mold block	2-26
Inserting a tooling split	2-27
Finalizing the sketch of the lower mold block	2-28
Extruding the lower mold block	2-29
Converting a sketch	2-30
Extruding the upper mold block	2-31
Moving the cavity mild block	2-32
Measuring the distance	2-32
Copying the plastic part	2-33
Subtracting the solid bodies	2-33
Applying the shrink rate	2-34
Calculating the mass	2-34

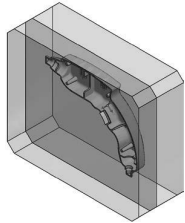


<b>Challenge 4: Shut-Off Surface Creation</b>	<b>2-36</b>
Open the document: Steering Wheel	2-37
Creating a split line	2-37
Creating the parting lines	2-39
Creating the shut-off surfaces	2-40
Measuring the surface area	2-41
Creating the parting surfaces	2-42
Inserting a tooling split	2-43
Adding chamfers	2-44
Creating an exploded view	2-45





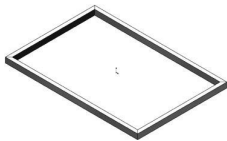
<b>Challenge 5: Undercut Analysis</b>	<b>2-46</b>
Open the document: Undercut Analysis	2-47
Performing an undercut analysis	2-47
Creating the parting lines	2-48
Creating the shut-off surfaces	2-49
Creating the parting surfaces	2-50
Inserting a tooling split	2-51
Adding the 1 <sup>st</sup> slide core	2-52
Adding the 2 <sup>nd</sup> slide core	2-53
Assigning material	2-54
Calculating the mass	2-54



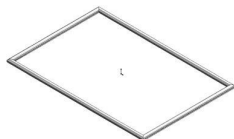
<b>Challenge 6: Virtual Part Creation</b>	<b>2-56</b>
Open the document: Virtual part Creation	2-57
Hiding components	2-57
Inserting a new part	2-58
Working in the part level	2-59
Inserting the 2nd part	2-60
Moving the solid bodies	2-61
Creating an intersect feature	2-62
Creating a combine-subtract feature	2-63
Working in the assembly level	2-64
Assigning material	2-65
Calculating the mass	2-65

## CSWPA – Weldments

### Chapter 3: Advanced Weldments **3-1**



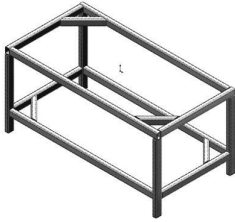
<b>Challenge 1: Creating the Weldments profile</b>	<b>3-3</b>
Starting a new part document	3-3
Enabling the Weldments tab	3-3
Sketching the first weldment profile	3-4
Creating the second weldment profile	3-5
Sketching the profile	3-5
Showing the weldment profiles folder	3-6
Creating a new weldment part	3-7
Adding structural members	3-8
Applying material	3-9
Calculating the mass	3-9



Changing the structural members	3-10
Calculating the mass	3-11

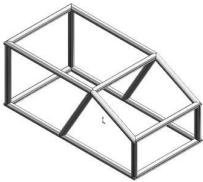
**Challenge 2: Weldment Frame 3.sldprt** 3-12

Open the document: Weldment Frame 3	3-12
Adding structural members	3-12
Creating the parallel group	3-14
Trimming the parallel group	3-15
Applying material	3-17
Calculating the mass	3-17
Creating the Upper Braces	3-18
Trimming the first Upper Braces	3-18
Updating the Cut list	3-20
Creating the Lower Braces	3-21
Trimming the Lower Braces	3-22
Adding End Caps	3-24
Calculating the final mass	3-25



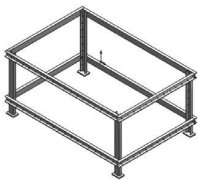
**Challenge 3: Weldment Frame 4.sldprt** 3-26

Open the document: Weldment Frame 4	3-26
Creating a 3D sketch	3-26
Adding structural members	3-31
Creating the parallel group	3-32
Trimming the tubes	3-33



**Challenge 4: Weldment Frame 5.sldprt** 3-37

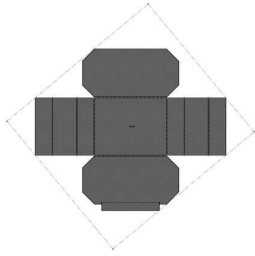
Open the document: Weldment Frame 5	3-37
Assigning material	3-37
Modifying the properties	3-38
Transferring to a drawing	3-39
Adding a drawing view	3-39
Inserting the weldment cut list	3-40
Adding balloons	3-41



## CSWPA – Sheet Metal

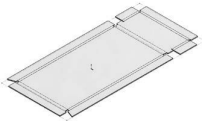
### Chapter 4: Advanced Sheet Metal 4-1

<b>Challenge 1: Converting to Sheet Metal</b>	4-3
Opening the document: Convert to SM	4-3



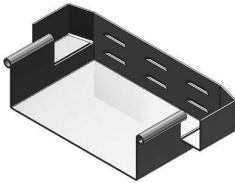
Enabling the sheet metal tab	4-3
Making a copy of the solid model	4-3
Converting to sheet metal	4-5
Calculating the mass	4-6
Measuring the flat pattern	4-7
Creating a Hem	4-8
Calculating the mass	4-10

**Challenge 2: Sheet Metal Cut List** 4-11

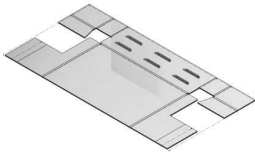


Open the document: SM Cut List	4-11
Modifying the first bend radius	4-11
Measuring the flat length	4-12
Modifying the second bend radius	4-13
Measuring the flat length	4-13
Finding the Bounding Box Area	4-14

**Challenge 3: Sheet Metal Part** 4-15



Open the document: SM Part	4-15
Creating the Edge Flanges	4-15
Closing the corners	4-16
Creating a cutout	4-17
Adding a Miter Flange	4-18
Mirroring the features	4-22
Calculating the mass	4-23
Changing the K-Factor value	4-24
Measuring the flat length	4-24
Adding hems	4-25
Adding a form feature	4-26
Creating a linear pattern	4-27
Calculating the mass	4-27



## CSWPA – Surfacing

**Chapter 5: Advanced Surfacing** 5-1



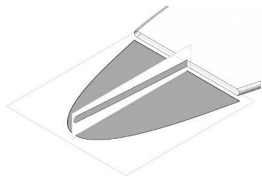
<b>Challenge 1: Surface patch</b>	5-3
Open the document: Inlet-Outlet Patches	5-3
Enabling the surfaces tab	5-3
Patching the first opening	5-4
Measuring the surface area	5-5





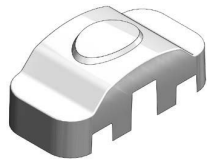
Deleting and patching a hole	5-5
Knitting the surfaces	5-6
Creating a section view	5-6
Calculating the mass	5-7

**Challenge 2: Surfaces & Sketch Picture** **5-8**



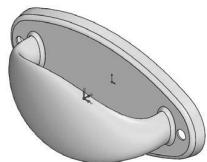
Open the document: Surfaces_ Sketch Picture	5-8
Examining the sketch pictures	5-8
Creating the 1 <sup>st</sup> loft profile	5-9
Fully defining a sketch	5-9
Creating the 2 <sup>nd</sup> loft profile	5-10
Converting the entities	5-10
Making the guide curve	5-11
Adjusting the spline	5-11
Creating a lofted surface	5-12
Measuring the surface area	5-13
Mirroring the surface bodies	5-14
Knitting the surfaces	5-15
Combining the solid bodies	5-15
Assigning material	5-16
Calculating the mass	5-16

**Challenge 3: Ruled Surface** **5-17**



Open the document: Ruled Surface	5-17
Creating a ruled surface	5-17
Using the taper to vector option	5-17
Trimming the surfaces	5-18
Measuring the surface area	5-19
Creating a section view	5-19

**Challenge 4: Projected Curves** **5-20**



Open the document: Project Curve	5-20
Creating a projected curve	5-20
Sketching the sweep profile	5-21
Creating a swept feature	5-22
Using path and guide curves	5-22
Trimming the surfaces	5-23
Knitting the surfaces	5-24
Adding fillets	5-24
Adding thickness	5-25
Calculating the mass	5-25



<b>Challenge 5: Surface Split</b>	<b>5-26</b>
Open the document: Surface Split	5-26
Creating a split line	5-26
Using the projection type	5-26
Creating the 1 <sup>st</sup> offset surface	5-27
Creating the 2 <sup>nd</sup> offset surface	5-27
Creating the 1 <sup>st</sup> lofted cut feature	5-28
Creating the 2 <sup>nd</sup> lofted cut feature	5-28
Adding fillets	5-29
Shelling the solid body	5-30
Calculating the mass	5-30



<b>Challenge 6: Boundary Surface</b>	<b>5-31</b>
Open the document: Boundary Surface	5-31
Creating a lofted surface	5-31
Measuring the surface area	5-32
Mirroring a surface body	5-32
Mirroring a mirrored surface body	5-33
Creating a trimmed sketch	5-33
Fully defining the sketch	5-33
Trimming the surface bodies	5-34
Using standard trim	5-34
Measuring the total area	5-34

## Glossary, Index, and Model Library

### SOLIDWORKS 2025 Quick-Guides:

Quick Reference Guide to SOLIDWORKS 2025 Command Icons and Toolbars.

