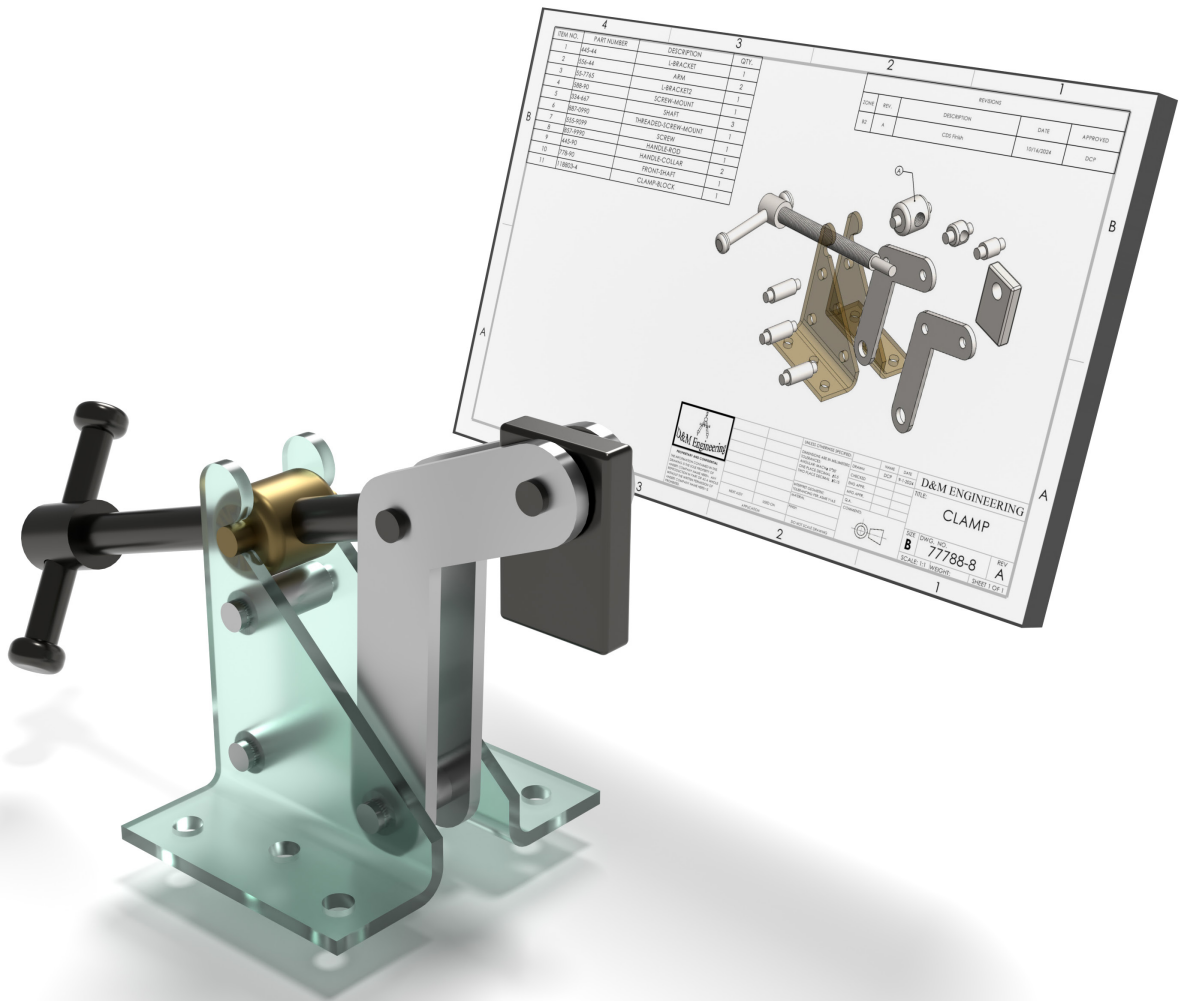


Engineering Graphics with SOLIDWORKS® 2026

A Step-by-Step Project Based Approach

Includes
SOLIDWORKS and
3DEXPERIENCE eBook



SOLIDWORKS
Partner Program

David C. Planchard CSWP
SOLIDWORKS Accredited Educator



Better Textbooks. Lower Prices.
www.SDCpublications.com



ACCESS CODE
UNIQUE CODE INSIDE

Visit the following websites to learn more about this book:



[amazon.com](https://www.amazon.com)

[Google books](https://books.google.com)

[BARNES & NOBLE](https://www.barnesandnoble.com)

TABLE OF CONTENTS

Introduction	I-1
About the Author	I-4
Acknowledgements	I-5
Contact the Author	I-5
Note to the Instructor	I-6
Trademarks, Disclaimer and Copyrighted Material	I-6
References	I-7
Table of Contents	I-8
Overview of Chapters	I-18
Chapter 1: History of Engineering Graphics	I-18
Chapter 2: Isometric Projection and Multi View Drawings	I-18
Chapter 3: Dimensioning Practices, Scales, Tolerancing and Fasteners	I-19
Chapter 4: Overview of SOLIDWORKS and the User Interface	I-20
Chapter 5: Introduction to SOLIDWORKS Part Modeling	I-21
Chapter 6: Revolved Boss/Base Features	I-21
Chapter 7: Swept, Lofted, Rib, Mirror and Additional Features	I-22
Chapter 8: Assembly Fundamentals - Bottom-up method	I-22
Chapter 9: Fundamentals of Drawing	I-23
Chapter 10: SOLIDWORKS CAD Design Associate (CSWA)	I-23
Chapter 11: Additive Manufacturing - 3D printing fundamentals	I-24
Bonus Section: SOLIDWORKS and the 3DEXPERIENCE Platform	I-25
About the Book	I-26
Windows Terminology in SOLIDWORKS	I-27
Chapter 1 - History of Engineering Graphics	I-1
Chapter Overview	I-3
History of Engineering Graphics	I-3
Global and Local Coordinate System	I-6
2-Dimensional Cartesian Coordinate System	I-7
3-Dimensional Cartesian Coordinate System	I-8
Absolute Coordinates	I-10
Relative Coordinates	I-10
Polar Coordinates	I-11
Cylindrical and Spherical Coordinates	I-11
Freehand Sketching	I-12
General Sketching Techniques	I-13
Geometric Entities	I-14
Points	I-14
Lines	I-14
Planes	I-15
Circles	I-15
Arcs	I-16
Solid Primitives	I-16
Alphabet of Lines	I-17
Visible lines	I-17
Hidden lines	I-17
Dimension lines	I-18
Extension lines	I-18

Leader lines	1-19
Break lines	1-20
Centerlines	1-20
Phantom lines	1-21
Section lines	1-21
Cutting Plane lines	1-22
Precedence of Line Types	1-23
Alphabet of Lines Exercises	1-25
Projections in General	1-27
Projection Types	1-29
Parallel Projection	1-29
Perspective Projection	1-29
Orthographic Projection	1-29
Oblique Projection	1-29
Multi-view Projection	1-30
Orient and Select the Front View	1-30
Orthographic Projection (Third Angle)	1-31
Glass Box and Six Principal Orthographic Views	1-32
Height, Width and Depth Dimensions	1-35
Transferring Dimensions	1-35
Sheet Media	1-36
ANSI Standard Sheet Sizes	1-36
Orthographic Projection Exercises	1-37
Planes (Normal, Inclined and Oblique)	1-42
Plane Exercises	1-43
Chapter Summary	1-49
Questions/Exercises	1-51
Chapter 2 - Isometric Projection and Multi View Drawings	2-1
Chapter Overview	2-3
Isometric Projections	2-3
Isometric Sketching	2-5
Circles Drawn in Axonometric View	2-7
Additional Projections	2-9
Oblique Projection	2-9
Arrangement of Views	2-13
Two View Drawing	2-14
One View Drawing	2-16
Drawing - Exercises	2-19
Drawing Views - Advanced	2-21
Section View	2-21
Detail View	2-23
Broken out View	2-24
Break or Broken View	2-25
Crop View	2-26
Auxiliary View	2-27
Exercises	2-27
History of Computer Aided Design (CAD)	2-28
Boolean Operations	2-29
What is SOLIDWORKS?	2-31
Design Intent	2-32

Design Intent in a Sketch	2-32
Design Intent in a Feature	2-33
Design Intent in a Part	2-33
Design Intent in an Assembly	2-34
Design Intent in a Drawing	2-34
Chapter Summary	2-35
Questions/Exercises	2-36
Chapter 3 - Dimensioning Practices, Scales, Tolerancing and Fasteners	3-1
Chapter Overview	3-3
American National Standards Institute (ANSI)	3-3
Dimensioning	3-4
Location Dimension	3-4
Size Dimension	3-4
Measurement - units	3-5
Metric/SI	3-5
English	3-5
Dual Dimensioning	3-6
Scale	3-7
Architect's Scale	3-7
Engineer's Scale	3-7
Linear Encoder	3-7
Linear Scale	3-7
Vernier Scale	3-7
Standards for Dimensioning	3-8
Linear Dimension	3-8
Stagger Dimension	3-8
Aligned Dimension	3-9
Angular Dimension	3-9
Chamfer Dimension	3-10
Slot Dimension	3-10
Radius Dimension (Leader line)	3-11
Simple Hole Dimension (Leader line)	3-12
Fastener Hole Dimension (Annotations)	3-13
Cylindrical Dimension	3-13
Equally Spaced Hole Dimension	3-15
Hole Dimension Location	3-15
Point/Center of a Circle Dimension	3-16
Arc Dimension	3-16
Order of Preference - Linear Dimension Line	3-17
Precision	3-17
Size Dimension	3-18
Continuous Dimensions	3-19
Principles of good Dimensioning	3-20
Precision and Tolerance	3-26
Tolerance for a Drawing	3-27
General Tolerance - Title Block	3-27
Local Tolerance - Dimension	3-28
Limit Tolerance	3-28
Unilateral Tolerance	3-29
Bilateral Tolerance	3-29

Formatting Inch Tolerances	3-29
Metric Dimension Specifications	3-30
Tolerance Parts and Important Terms	3-30
Fit - Hole Tolerance	3-32
Fit Types between Mating Parts	3-32
Clearance Fit	3-33
Interference Fit	3-33
Transition Fit	3-33
Fasteners in General	3-34
Representing External (Male) Threads	3-37
Cutting External (Male) Threads	3-38
Die	3-38
Lathe	3-38
Representing Internal (Female) Threads	3-39
Cutting Internal (Female) Threads	3-39
Taper	3-40
Plug	3-40
Bottoming	3-40
American National Standard and Unified Screw Threads	3-41
Single vs. Double or Triple Threads	3-41
Pitch and Major Diameter	3-42
Thread Class of Fit	3-42
Class 1	3-42
Class 2	3-42
Class 3	3-42
General Thread Notes	3-43
Dimensioning a CounterBore Hole	3-44
Dimensioning a CounterSunk Hole	3-44
Chapter Summary	3-45
Questions/Exercises	3-46
Chapter 4 - Overview of SOLIDWORKS and the User Interface	4-1
Chapter Objective	4-3
What is SOLIDWORKS?	4-3
Basic concepts in SOLIDWORKS	4-3
Start a SOLIDWORKS Session	4-4
<i>Tutorial: Start a SOLIDWORKS Session</i>	4-4
Welcome dialog box	4-4
Home Tab	4-5
Recent Tab	4-5
Learn Tab	4-5
Alerts Tab	4-6
SOLIDWORKS User Interface (UI) and CommandManager	4-7
Menu Bar toolbar	4-7
Menu Bar menu (No model open)	4-8
Drop-down menu (Model open)	4-8
Drop-down menu (Open part document)	4-8
Create a New Part Document	4-9
Novice Mode	4-10
Advanced Mode	4-10
Graphic Window (Default)	4-11

View Default Sketch Planes	4-12
Download the SOLIDWORKS folder	4-12
Open the Bracket Part	4-12
Part FeatureManager	4-13
FeatureManager Rollback Bar	4-13
Heads-up View toolbar	4-15
Dynamic Annotation Views	4-15
Zoom to Fit	4-15
Zoom to Area	4-15
Window-Select	4-15
Rotate	4-15
Front View	4-16
Right View	4-16
Top View	4-16
Isometric view	4-16
SOLIDWORKS Help	4-16
SOLIDWORKS Tutorials	4-17
Close SOLIDWORKS Tutorials	4-17
User Interface Tools	4-17
Right-click	4-18
Consolidated toolbar	4-18
System feedback icons	4-18
Confirmation Corner	4-19
Heads-up View toolbar	4-19
CommandManager (Default Part tab)	4-22
CommandManager (Default Drawing tab)	4-23
CommandManager (Default Assembly tab)	4-24
CommandManager (Float/Fit)	4-25
Collapse the CommandManager	4-25
FeatureManager Design Tree	4-26
FeatureManager design tree tab	4-26
PropertyManager tab	4-26
Configuration Manager tab	4-26
DimXpertManager tab	4-26
DisplayManager tab	4-26
CAM tab	4-26
Hide/Show tab	4-26
Sensors tool	4-26
Tags	4-27
Split	4-27
Fly-out FeatureManager	4-28
Task Pane	4-29
3DEXPERIENCE	4-29
3DEXPERIENCE files on This PC	4-30
Design Library	4-30
File Explorer	4-31
View Palette	4-31
Appearances, Scenes, and Decals	4-32
Custom Properties	4-32
SOLIDWORKS Resources	4-32
SOLIDWORKS User Forum	4-32

Dynamic Reference Visualization	4-33
Mouse Movements	4-34
Single-Click	4-34
Double-Click	4-34
Right-Click	4-34
Scroll Wheel	4-34
Save SOLIDWORKS Document as Previous Version	4-35
Translate Feature Names in the FeatureManager Tree	4-36
Share and Send To	4-37
Simplified User Interface	4-38
Summary	4-39
Chapter 5 - Introduction to SOLIDWORKS Part Modeling	5-1
Chapter Overview	5-3
File Management	5-4
Start a SOLIDWORKS Session and Open a New Part Document	5-5
Part Template	5-5
BATTERY Part	5-11
BATTERY Part-Extruded Boss/Base Feature	5-13
BATTERY Part-Fillet Feature Edge	5-17
BATTERY Part-Extruded Cut Feature	5-19
BATTERY Part-Second Fillet Feature	5-21
BATTERY Part Extruded-Boss/Base Feature	5-22
BATTERYPLATE Part	5-28
Save As, Delete, Edit Feature and Modify	5-29
BATTERYPLATE Part-Extruded Boss Feature	5-31
BATTERYPLATE Part-Fillet Features: Full Round and Multiple Radius Options	5-32
Multi-body Parts and Extruded Boss/Base Feature	5-35
Chapter Summary	5-36
Questions/Exercises	5-38
Chapter 6 - Revolved Boss/Base Features	6-1
Chapter Overview	6-3
LENS Part	6-4
LENS Part Revolved Boss/Base Feature	6-5
LENS Part-Shell Feature	6-8
LENS Part-Extruded Boss/Base Feature and Convert Entities Sketch tool	6-9
LENS Part-Hole Wizard Feature	6-10
LENS Part-Revolved Boss Thin Feature	6-12
LENS Part-Extruded Boss/Base Feature and Offset Entities	6-14
LENS Part-Extruded Boss Feature and Transparency	6-16
LENS Part-Transparent Optical Property	6-16
BULB Part	6-18
BULB Part-Revolved Base Feature	6-19
BULB Part-Revolved Boss Feature and Spline Sketch tool	6-21
BULB Part-Revolved Cut Thin Feature	6-23
BULB Part-Dome Feature	6-25
BULB Part-Circular Pattern Feature	6-26
BULB Part-Seed Cut Feature	6-26
BULB Part-Extruded Cut Feature	6-28
BULB Part-Circular Pattern Feature	6-29
Customizing Toolbars and Short Cut Keys	6-30

Chapter Summary	6-32
Questions/Exercises	6-33
Chapter 7 - Swept, Lofted, Rib, Mirror and Additional Features	7-1
Chapter Overview	7-3
O-RING Part-Swept Base Feature	7-4
SWITCH Part-Lofted Base Feature	7-7
SWITCH Part-Dome Feature	7-12
Four Major Categories of Solid Features	7-14
LENSCAP Part	7-14
LENSCAP Part-Extruded Boss/Base, Extruded Cut and Shell Features	7-15
LENSCAP Part-Revolved Thin Cut Feature	7-18
LENSCAP Part-Thread, Swept Feature and Helix/Spiral Curve	7-19
HOUSING Part	7-25
HOUSING Part-Extruded Base Feature	7-27
HOUSING Part-Lofted Boss Feature	7-28
HOUSING Part-Second Extruded Boss/Base Feature	7-32
HOUSING Part-Shell Feature	7-33
HOUSING Part-Third Extruded Boss/Base Feature	7-34
HOUSING Part-Draft Feature	7-35
HOUSING Part-Threads and Swept Feature	7-37
HOUSING Part-Handle with Swept Feature	7-42
HOUSING Part-Extruded Cut Feature with Up To Surface Option	7-47
HOUSING Part-First Rib and Linear Pattern Feature	7-49
HOUSING Part-Second Rib Feature	7-52
HOUSING Part-Mirror Feature	7-55
Chapter Summary	7-58
Questions/Exercises	7-60
Chapter 8 - Assembly Modeling - Bottom up method	8-1
Chapter Overview	8-3
Assembly Modeling Overview	8-4
FLASHLIGHT Assembly	8-6
Assembly Techniques	8-7
Assembly Template	8-8
Assembly Templates-ASM-IN-ANSI	8-8
Assembly Templates-ASM-MM-ANSI	8-9
LENSANDBULB Sub-assembly	8-10
BATTERYANDPLATE Sub-assembly	8-14
CAPANDLENS Sub-assembly	8-16
FLASHLIGHT Assembly	8-20
FLASHLIGHT Assembly-Addressing Interference Issues	8-26
FLASHLIGHT Assembly-Exploded View	8-27
FLASHLIGHT Assembly-Export Files and eDrawings	8-31
Chapter Summary	8-33
Questions/Exercises	8-34
Chapter 9 - Fundamentals of Drawing	9-1
Chapter Overview	9-3
New Drawing and the Drawing Template	9-4
Title Block	9-7
Company Logo and Save Sheet Format	9-11

BATTERY Drawing	9-15
BATTERY Drawing - Insert a View	9-16
BATTERY Drawing - Detail View	9-19
BATTERY Drawing - View Display	9-20
BATTERY Drawing - Insert Model Items and Move Dimensions	9-21
BATTERY Drawing - Insert a Note	9-23
New Assembly Drawing and Exploded View	9-25
FLASHLIGHT Drawing - Bill of Material and Balloons	9-27
Part Numbers	9-29
FLASHLIGHT Drawing - ConfigurationManager	9-30
FLASHLIGHT Drawing - Update the Bill of Material	9-30
Design Tables and O-RING Design-Table Drawing	9-32
O-RING Drawing	9-34
O-RING Drawing - Design Table	9-34
Add a Center of Mass point	9-36
Chapter Summary	9-37
Questions/Exercises	9-38
Chapter 10 - SOLIDWORKS CAD Design Associate (CSWA)	10-1
Introduction	10-3
Taking the on-line proctored CSWA Exam (Part 1 or Part 2)	10-4
Part 1 of the Exam	10-10
Basic Part Creation and Modification, Intermediate Part Creation and Modification	10-10
Assembly Creation and Modification	10-12
Part 2 of the Exam	10-13
Introduction and Drafting Competencies	10-13
Advanced Part Creation and Modification	10-14
Assembly Creation and Modification	10-15
Intended Audience	10-16
Additional Reference Materials	10-16
During the Exam	10-17
Drafting Competencies	10-18
Example 1	10-18
Example 2	10-18
Example 3	10-19
Example 4	10-19
Example 5	10-19
Example 6	10-19
Basic Part Creation and Modification, Intermediate Part Creation and Modification	10-20
Example 1	10-21
Example 2	10-22
Example 3	10-23
Example 4	10-24
Example 5	10-25
Example 6	10-26
Example 6A	10-28
Example 6B	10-28
Advanced Part Creation and Modification	10-29
Example 1	10-29
Example 2	10-31
Example 3	10-32

Example 4	10-33
Example 5	10-34
Example 6	10-36
Example 6A	10-37
Assembly Creation and Modification	10-38
Example 1	10-39
Chapter 11 - Additive Manufacturing - 3D printing fundamentals	11-1
Chapter Objective	11-3
Additive vs. Subtractive Manufacturing	11-4
3D Printer Technology	11-5
Stages of 3D Printing	11-5
Fused Filament Fabrication (FFF)	11-6
StereoLithography (SLA)	11-9
Selective Laser Sintering (SLS)	11-11
Select the Correct Filament Material for FFF	11-12
PLA (Polylactic Acid)	11-13
Flex/Soft PLA	11-13
PLA Storage	11-14
PLA Part Accuracy	11-14
ABS (Acrylonitrile-Butadiene-Styrene)	11-14
ABS Storage	11-15
ABS Part Accuracy	11-15
Nylon	11-16
Nylon 618	11-16
Nylon 645	11-16
Nylon Storage	11-17
Nylon Accuracy	11-17
PVA (Polyvinyl Alcohol)	11-17
STereoLithography (*.stl) file	11-18
Save an STL (*.stl) file	11-18
Additive Manufacturing (*.amf) file	11-19
Save an Additive Manufacturing (*.amf) file	11-19
3D Manufacturing Format (*.3mf) file	11-20
Save a 3D Manufacturing Format (*.3mf) file	11-20
What is a Slicer?	11-21
How does a Slicer Work?	11-21
Slicer Parameters	11-21
Layer Height	11-21
Shell (Wall) Thickness	11-22
Infill Density/Overlap	11-22
Infill Patterns	11-22
Print Speed	11-23
Support Types	11-23
Touching Buildplate	11-23
Everywhere	11-24
Bed Platform Adhesion	11-24
Raft	11-24
Skirt	11-24
Brim	11-24

Part Orientation	11-25
Example 1	11-25
Example 2	11-26
Optimize Print Direction	11-26
Thin Region	11-26
Area of Overhang	11-26
Amount of needed Support	11-26
Remove Model from the Build Plate	11-28
Non-heated Build Plate	11-28
Heated Build Plate	11-28
Know the Printer's Limitations	11-29
Tolerance for Interlocking Parts	11-29
General Printing Tips	11-29
Reduce Infill/Overlap	11-29
Control Build Area Temperature	11-30
Add Pads	11-31
Safe Zone Rule	11-31
First Layer Not Sticking	11-31
Level Build Platform	11-32
Minimize Internal Support	11-32
Design a Water Tight Mesh	11-32
Clearance	11-32
In General	11-33
SOLIDWORKS Additive Manufacturing Certification (CSWA-AM)	11-34
Summary	11-35
Appendix	
SOLIDWORKS Keyboard Shortcuts	A-1
Modeling - Best Practices	A-3
Helpful On-Line Information	A-5
SOLIDWORKS Document Types	A-6
Bonus Section	B-1
SOLIDWORKS and the 3DEXPERIENCE Platform	
Glossary	G-1
Index	I-1