

# SOLIDWORKS® 2026 Intermediate Skills

Expanding on Solids, Surfaces, Multibodies,  
Configurations, Drawings, Sheet Metal  
and Assemblies



Paul Tran CSWE, CSWI

Visit the following websites to learn more about this book:



[amazon.com](https://www.amazon.com)

[Google books](https://books.google.com)

[BARNES & NOBLE](https://www.barnesandnoble.com)

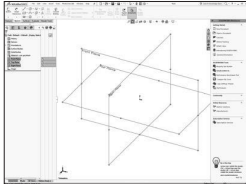
# TABLE OF CONTENTS

---



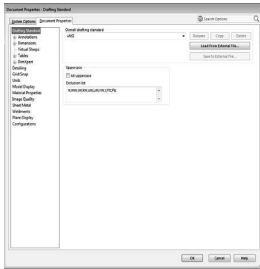
---

## Introduction: **SOLIDWORKS 2026 User Interface** **20**



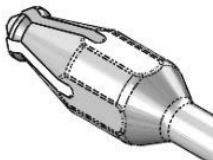
The 3 reference planes	21
The toolbars	21
The system feedback symbols	23
The status bar	23
2D sketch examples	24
3D feature examples	25

## Chapter 1: **Document Properties** **1-1**



<b>Setting up the Document Template</b>	<b>1-1</b>
Different standards in the world	1-2
Starting a new part document	1-3
Setting the ANSI drafting standards	1-3
Setting the dimension options	1-4
Setting the virtual sharp options	1-5
Setting the units options	1-5
Setting the image quality options	1-6
Saving the settings as a Part Template	1-6
Customizing Keyboard Shortcuts	1-7
Customizing Tool Buttons	1-12

## Chapter 2: **Sketching Skills** **2-1**



<b>Handle</b>	<b>2-1</b>
Tools Needed	2-2
Starting a new part document	2-3
Changing the System Options	2-3
Creating the Parent Sketch	2-4
Revolving the parent sketch	2-7
Adding the tip detail	2-7
Revolving the sketch	2-8
Transitioning from line-to-arc	2-8
Mirroring in sketch mode	2-9
Adding dimensions	2-10
Extruding a cut	2-10



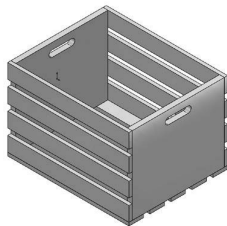
Creating a circular pattern	2-11
Adding other cut features	2-12
Creating another circular pattern	2-13
Adding a constant size fillet	2-14
Assigning material to the model	2-15
Calculating the mass of the model	2-16
Saving your work	2-16
Working with Sketch Pictures	2-17
Using Contour Select Tool	2-37



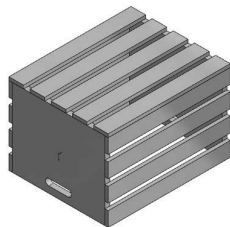
## **Chapter 3:**

### **Creating Multibody Parts**

**3-1**



<b>Wooden Crate</b>	<b>3-1</b>
Tools needed	3-2
Starting a new part document	3-3
Sketching the first body profile	3-4
Extruding the first body	3-6
Copying the body	3-6
Creating the upper plank	3-7
Creating the first linear pattern	3-9
Mirroring the planks	3-10
Creating the lower plank	3-10
Creating the second linear pattern	3-12
Creating an exploded view	3-13
Collapsing the view	3-15
Saving your work	3-16
Exercise: Combining Multibody Parts	3-17



## **Chapter 4:**

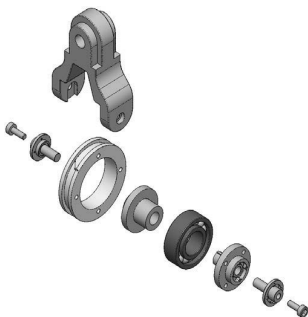
### **Working with Multibody Parts**

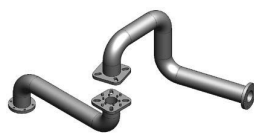
**4-1**

#### **Creating Mates & Exploded Views**

**4-1**

Tools needed	4-2
Opening a part document	4-3
Creating an exploded view	4-4
Collapsing the solid bodies	4-6
Inserting another part	4-7
Constraining the solid bodies	4-8
Adding a concentric mate	4-8
Adding a coincident mate	4-9
Creating a new mirror plane	4-10
Creating a mirror body	4-11
Inserting another part	4-13
Adding a concentric mate	4-14

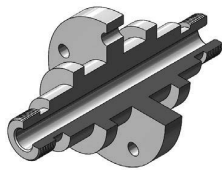


	Adding a coincident mate	4-14
	Adding another instance of the bolt	4-15
	Adding a concentric mate	4-15
	Adding a coincident mate	4-16
	Editing the exploded view	4-16
	Saving your work	4-17
	Working with Multibodies	4-19

## **Chapter 5:**

## **Revolved and Thread Features**

**5-1**



### **Cylinder**

5-1

Tools needed

5-2

Opening a part document

5-3

Creating a revolved feature

5-3

Adding chamfers

5-4

Creating the mounting holes

5-4

Adding threads

5-7

Adding threads to the opposite end

5-9

Creating a zonal section view

5-11

Saving your work

5-12

Exercise: Revolved & Threads

5-13



## **Chapter 6:**

## **Flex Bending**

**6-1**

### **Spanner**

6-2

Tools needed

6-2

Flex Bending - Part 1

6-3

Opening a part document

6-3

Creating the first flex bending feature

6-3

Creating the second flex bending feature

6-5

Flex examples

6-6

Flex twisting

6-6

Flex stretching

6-6

Flex tapering

6-7

Flex bending

6-7

Flex Bending - Part 2

6-8

Opening a part document

6-8

Creating a flex bending

6-8

Creating a linear pattern

6-10

Exercise: Flex Bending a Car Tire

6-11

Using the Deform feature

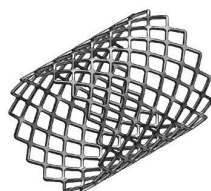
6-13

Opening a part document

6-13

Creating a Curve-to-Curve deform

6-13





Save and close	6-14
Opening a part document	6-15
Creating a Curve to Curve deform	6-15
Mirroring a surface body	6-16
Save and close all documents	6-16
Exercise: Deform using a 3D sketch	6-17
Exercise: Using Sweep with profile twist	6-19
Exercise: Using sweep with deform	6-23

## **Chapter 7:**



<b>Sweep with Guide Curves</b>	<b>7-1</b>
<b>Plastic Bottle</b>	<b>7-1</b>
Tools needed	7-2
Opening a part document	7-3
Creating the main body	7-3
Creating the first split line	7-5
Creating a face fillet	7-6
Creating the second split line	7-7
Creating the first offset surface	7-8
Creating a ruled surface	7-8
Creating the first knit surface	7-9
Adding the first fillet	7-9
Making the first cut with surface	7-10
Creating the first offset surface	7-11
Creating the second offset surface	7-11
Creating the second knit surface	7-12
Adding the second fillet	7-12
Making the second cut with surface	7-13
Adding the third fillet	7-14
Creating a shell	7-14
Adding the neck feature	7-15
Revolving the sketch	7-16
Creating a new plane	7-16
Creating a helix	7-17
Sketching the thread profile	7-18
Making the threads	7-19
Rounding off the ends of threads	7-19
Revolving the sketch	7-20
Rounding off the opposite side	7-20
Sweep with Solid Body	7-21
Exercise: Sweep Cut using a Solid Body	7-28
Exercise: Sweep Using a Sketch Profile	7-34

## Chapter 8:      **Lofts and Boundaries**      **8-1**

### **Solar Boat**      8-1

Tools needed      8-2

Opening a part document      8-3

Creating a lofted feature      8-3

Creating a boundary feature      8-5

Creating the wing      8-6

    Creating the wing support      8-7

Constructing the nose feature      8-8

Creating the horizontal tail fins      8-11

Creating the vertical tail fin      8-12

Creating a split line      8-13

    Creating the canopy's first profile      8-14

Creating a new plane      8-15

Sketching the guide curve      8-15

Creating the canopy's second loft profile      8-16

Creating the canopy's third loft profile      8-16

Creating the canopy feature      8-17

Creating a mirror feature      8-17

Adding fillets to the main body      8-18

    Adding fillets to the float and wing      8-18

    Adding fillets to the ends of the floats      8-19

    Adding fillets to the tail fins      8-19

    Adding fillets to the ends of the fins      8-20

Creating a face fillet      8-20

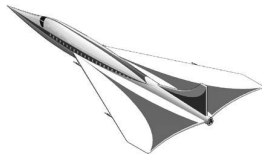
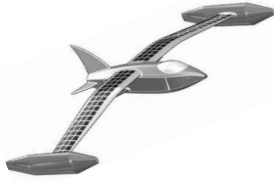
Creating a split line for the solar panels      8-21

Changing color of the solar squares      8-22

Changing the edge display      8-23

Exercise: Surface & Solid Modeling      8-25

Exercise: Using Split Lines      8-33



## Chapter 9:      **Surfaces and Patches**      **9-1**

### **Welding Fixture**      9-1

Tools needed      9-2

Opening a part document      9-3

Creating a swept surface      9-3

    Creating the first extruded surface      9-4

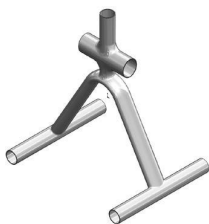
    Creating the second extruded surface      9-4

    Creating the third extruded surface      9-5

    Creating the first trimmed surface      9-5

    Creating the second trimmed surface      9-6

    Creating the third trimmed surface      9-7



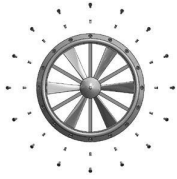


## Chapter 10:



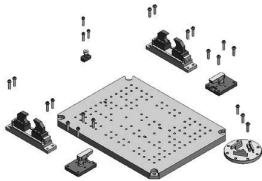
## Chapter 11:



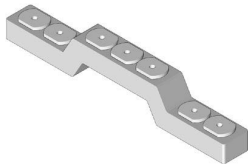


Creating the first radial exploded view	11-13
Creating the second radial exploded view	11-13
Verifying the exploded view	11-14
Exercise: Assembly Motions	11-15

## **Chapter 12: Using Smart-Mates 12-1**

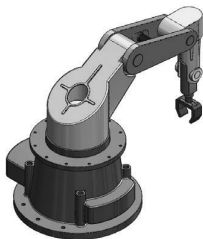


<b>Fixture Assembly</b>	12-1
Tools Needed	12-2
Opening an existing assembly document	12-3
Enabling the selection options	12-3
Exploring the Smart-Mate options	12-4
Using Smart-Mate Concentric	12-5
Creating a Smart-Mate Concentric & Coincident	12-6
Repeating the previous mate	12-7
Mating other components	12-8
Checking the status of the components	12-9
Switching configuration	12-9
Creating an instance of the bolt	12-10
Creating another instance of the bolt	12-11
Adding more bolts	12-12
Repeating	12-13
Using Mate Controller	12-15
Using copy with mates	12-25



## **Chapter 13: Introduction to Top Down Assembly 13-1**

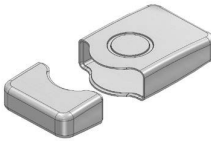
<b>Car Remote Control Housing</b>	13-1
Tools Needed	13-2
Opening a part document	13-3
Making an assembly from part	13-3
Placing the first component	13-4
Creating a new part	13-4
Converting the entities	13-5
Extruding the sketch	13-6
Adding the fillet	13-6
Shelling the part	13-7
Hiding a component	13-7
Adding features to the part	13-8
Creating offset entities	13-9
Extruding the sketch	13-10
Adding the fillet	13-10
Showing a component	13-11
Creating a section view	13-11





Applying dimension changes	13-12
Creating an exploded view	13-14
Playing the animation	13-15
Changing the display mode	13-16
Creating a Flat Spring Assembly	13-17
Exercise: Spring Assembly	13-29

## **Chapter 14: Using the Lip & Groove Options 14-1**

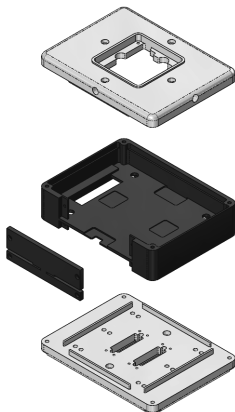


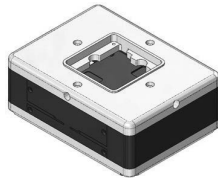
Lesson overview	14-1
Tools Needed	14-2
Using the Lip & Groove Options	14-3
Opening a part document	14-4
Editing the housing	14-4
Creating a section view	14-7
Using the Mounting Boss Tool	14-8
Opening an assembly document	14-9
Creating a mounting boss-hole feature	14-9
Setting the parameters	14-9
Hiding the Upper Half body	14-11
Creating a mounting boss-pin feature	14-12
Creating a section view	14-14
Repeating	14-14



## **Chapter 15: Assembly Drawings & BOM 15-1**

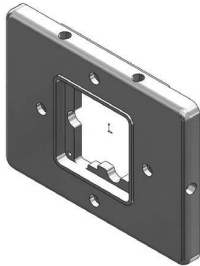
<b>Aluminum Enclosure</b>	15-1
Tools needed	15-2
Starting a new drawing document	15-3
Selecting the ANSI standard sheet size	15-3
Switching to ANSI standards	15-4
Using the view palette	15-5
Inserting a Bill of Materials	15-6
Modifying the BOM's Row Height	15-8
Adding a new column	15-8
Customizing the new column	15-9
Changing the color of the paper	15-10
Adding balloons	15-11
Adding an isometric view	15-12
Changing the display of a drawing view	15-13
Editing the sheet format	15-13
Switching back to the sheet	15-16
Reference reading: GD&T	15-18
Form examples	15-18



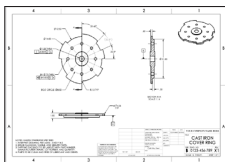
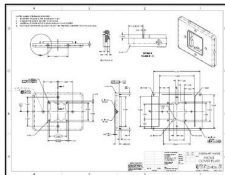



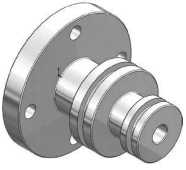
Orientation examples	15-19
Profile examples	15-19
Runout examples	15-20
Location examples	15-20
ASME – Y14.5 Symbol descriptions	15-22
Feature control frames	15-25
MMC maximum material condition	15-26
LMC least material condition	15-26

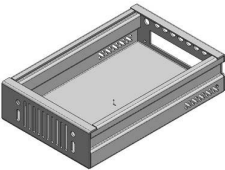
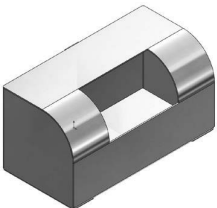
## **Chapter 16: Drawings & Detailing 16-1**



<b>Front Cover Plate</b>	16-1
Tools needed	16-2
Opening a part document	16-3
Creating the drawing views	16-4
Changing to phantom line style	16-6
Creating a partial section view	16-7
Flipping the section direction	16-8
Changing the hatch pattern	16-8
Creating a detail view	16-9
Inserting the model dimensions	16-10
Cleaning up the dimensions	16-11
Inserting dimensions to another view	16-12
Breaking the view alignment	16-13
Creating a projected view	16-14
Adding the centerline symbols	16-15
Adding datums	16-16
Adding a flatness tolerance	16-18
Adding a perpendicular tolerance	16-19
Copying the control frame	16-20
Modifying the geometric tolerance	16-21
Adding another position tolerance	16-22
Adding a symmetric tolerance	16-23
Adding a bilateral tolerance	16-23
Adding a limit tolerance	16-24
Adding a basic tolerance	16-24
Adding general notes	16-25
Filling out the title block	16-26
Exercise: Creating a drawing from a model	16-29
Exercise: Attaching a note or symbol to a dimension	16-30
Exercise: Creating an engineering drawing	16-53



 	<b>Chapter 17:</b>	<b>SOLIDWORKS MBD</b>	<b>17-1</b>
		<b>Introduction to Model Based Definition</b>	17-1
		Tools needed	17-2
		Prismatic Parts	17-3
		Opening a part document	17-3
		Enabling SOLIDWORKS MBD	17-3
		Setting the options	17-3
		Adding datums	17-5
		Using scope	17-6
		Showing the constraint status	17-7
		Adding the size dimensions	17-8
		Showing the tolerance status	17-8
		Exercise: Adding the Size and Location Dimensions	17-9
		Turned Parts	17-13
		Capturing 3D Views	17-19
		Publishing PDF and eDrawing Files	17-23
		3D PDF Template Editor	17-30

 	<b>Chapter 18:</b>	<b>Sheet Metal Parts</b>	<b>18-1</b>
		<b>Hard Drive Enclosure</b>	18-1
		Tools needed	18-2
		Starting a new part document	18-3
		Creating the Base flange	18-4
		Creating a cut feature	18-5
		Creating the first edge flange	18-6
		Creating the second edge flange	18-9
		Copying and pasting a sketch	18-11
		Adding more cuts	18-13
		Adding a library feature cut	18-15
		Mirroring a feature	18-17
		Toggling the flat display	18-18
		Creating the flat pattern	18-19
		Accessing the sheet properties	18-20
		Sheet metal parts – Multibody Design	18-21
		Using FeatureWorks – Feature Recognition	18-37

<b>Chapter 19:</b>	<b>Plastic Parts</b>	<b>19-1</b>
	<b>Plastic Part_Design1</b>	19-1
	Tools Needed	19-2
	Making the base feature	19-3



Creating a cut feature	19-4
Adding the raised features	19-5
Adding fillets	19-6
Shelling the model	19-6
Adding the interlock feature	19-7
Creating a face fillet	19-8
Adding another fillet	19-9
Creating the side holes	19-10



<b>Plastic Part_Design2</b>	19-11
Extruding the base feature	19-11
Making the upper cut	19-12
Creating a new plane	19-14
Sketching the button holes	19-14
Making the cut	19-15
Shelling the model	19-16
Adding a step cut	19-17
Making the interlock feature	19-18
Extruding a boss feature	19-19
Adding a fillet	19-20
Creating the flat-cable outlet cut	19-20
Creating the LED holes	19-21
Adding the mounting bosses	19-22
Adding the mounting holes	19-23
Adding a fillet	19-24

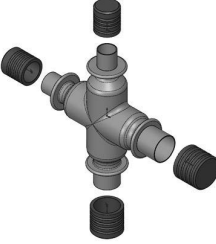
## **Chapter 20:**

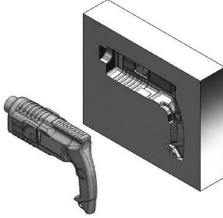



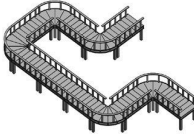
<b>Casted Parts</b>	<b>20-1</b>
<b>Casted Upper Housing</b>	20-1
Tools needed	20-2
Creating the base	20-3
Inserting the counterbore hole	20-5
Making the side support walls	20-8
Adding drafts	20-9
Mirroring multiple features	20-10
Creating a rib feature	20-11






<b>Casted Valve Body</b>	<b>20-15</b>
Viewing the part/child relationships	20-16
Exercise: Casted Bracket	20-29
Exercise: Converting Catia or STL files	20-37

	<b>Chapter 21:</b>	<b>Smart Components</b>	<b>21-1</b>
		Using Auto Size & Configurator Table	21-1
		Tools needed	21-2
		Opening a part document	21-3
		Showing the dimensions and their names	21-3
		Splitting the FeatureManager tree	21-4
		Adding a new configuration	21-4
		Creating mate references	21-6
		Testing the mate references	21-7
		Making a smart component	21-8
		Testing the smart component	21-9
		Adding other instances of the cap	21-10

	<b>Chapter 22:</b>	<b>Using Subtract &amp; Intersect Tools</b>	<b>22-1</b>
		Simple Cavity	22-1
		Opening a part document	22-3
		Scaling the part	22-3
		Extruding the mold block	22-3
		Assigning material	22-4
		Copying a solid body	22-4
		Creating the cavity	22-5
		Separating the solid bodies	22-6
		Using the intersect tool	22-7
		Exercise: Creating a Cavity with Combine Subtract	22-10

 	<b>Chapter 23:</b>	<b>Using Magnetic Mates</b>	<b>23-1</b>
		Deck Assembly	23-1
		Tools needed	23-2
		Publishing an asset	23-4
		Opening another part document	23-6
		Defining another asset publisher	23-7
		Opening an assembly document	23-8
		Adding the section1 component to the assembly	23-9
		Adding another instance of section1	23-10
		Adding more instances	23-11

<b>Chapter 24:</b>	<b>Hybrid Modeling</b>	<b>24-1</b>
	Remote Control	24-1
	Tools needed	24-2

	Extruding the first surface	24-3
	Extruding the second surface	24-4
	Trimming the surfaces	24-4
	Thickening the surfaces	24-5
	Creating a split line feature	24-5
	Adding draft	24-6
	Adding a variable size fillet	24-7
	Shelling the solid body	24-8
	Cutting the solid body	24-8
	Saving the upper half	24-9
	Saving the lower half	24-9
	Flipping the cut direction	24-9
	Inserting the top half	24-10
	Creating the cut for the keypad	24-11
	Separating the two halves	24-12
	Changing appearance	24-12
	Exercise: Loft with guide curves	24-15
	Exercise: Using boundary solid	24-17
	Exercise: Using boundary surface	24-19

**Glossary**

**Index**

**SOLIDWORKS 2026 Quick-Guides**

**Model Library**

