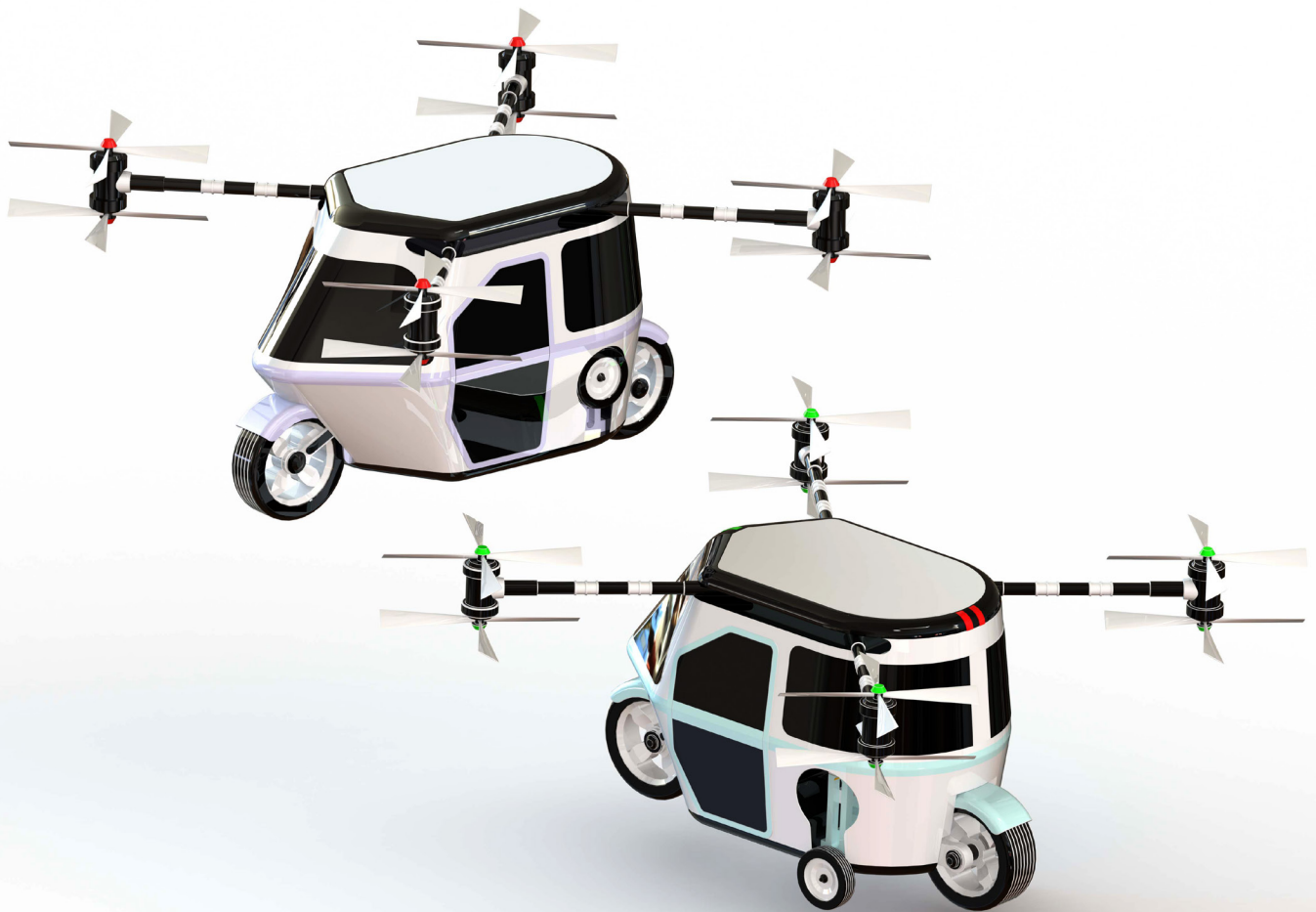


SOLIDWORKS® 2026

Advanced Techniques

Mastering Parts, Surfaces, Sheet Metal,
SimulationXpress, Top Down Assemblies,
Core & Cavity Molds



Paul Tran CSWE, CSWI

Visit the following websites to learn more about this book:



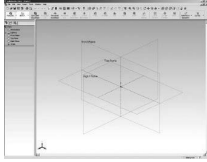
[amazon.com](https://www.amazon.com)

[Google books](https://books.google.com)

[BARNES & NOBLE](https://www.barnesandnoble.com)

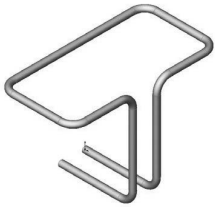
Table of Contents

Introduction SOLIDWORKS 2026 User Interface	21
The 3 references planes	22
The toolbars	22
The system feedback symbols	24
The status bar	24
2D sketch examples	25
3D feature examples	26



Advanced Modeling Topics

Chapter 1	Introduction to 3D Sketch	1-1
	Tools Needed	1-2
	Creating a 3D Sketch	1-3
	Completing the profile	1-4
	Adding dimensions	1-5
	Adding the sketch fillets	1-6
	Creating the swept feature	1-7
	Questions for review	1-8
	Exercise: Sweep with 3D Sketch	1-9
	Exercise: 3D Sketch & Planes	1-10
	Exercise: 3D Sketch & Composite Curve	1-17



Chapter 2	Plane Creation	2-1
	Advanced Topics	2-1
	Tools Needed	2-2
	Revolving the base	2-3
	Creating a tangent plane	2-4
	Creating a flat surface	2-5
	Extruding a cut	2-6
	Creating an at-angle plane	2-7
	Showing the sketches	2-8
	Creating a coincident plane	2-9
	Creating a parallel plane	2-10
	Creating a recess feature	2-11
	Creating an offset-distance plane	2-12
	Creating the bore holes	2-12
	Creating a perpendicular plane	2-13





Creating the side-grips	2-14
Creating a circular pattern of the grips	2-15
Creating a Mid-Plane	2-17
Adding fillets to all edges	2-19
Questions for Review	2-20
Exercise: Creating New Planes	2-22
Exercise: Plane creation	2-29

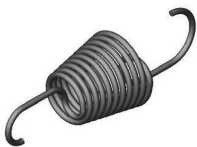
Chapter 3 Advanced Modeling 3-1

5/8" Spanner	3-1
Tools needed	3-2
Opening the spanner sketch document	3-3
Creating the transition sketch	3-4
Creating a new work plane	3-6
Creating the closed-end sketch	3-7
Extruding the closed-end feature	3-7
Adding a 12-sided polygonal hole	3-8
Creating the recess profile	3-9
Mirroring the recessed feature	3-10
Adding fillets	3-11
Adding text	3-13
Extruding the text	3-14
Questions for Review	3-17
Exercise: Circular text wraps	3-19



Chapter 4 Sweep with Composite Curves 4-1

Helical Extension Spring	4-2
Tools needed	4-2
Converting to a helix	4-3
Creating a 2-degree plane	4-4
Sketching the large loop	4-5
Sketching the large hook	4-5
Creating a parallel plane	4-6
Creating a Composite Curve	4-8
Sweeping the profile along the path	4-11
Other spring examples	4-12
Questions for review	4-13
Exercise: Circular Spring – 180 deg.	4-14



Using Variable Pitch	4-17
Multi-Pitch Spring with Closed Ends	4-18
Tools Needed	4-18
Creating the base sketch	4-19



Creating a helix using variable pitch	4-19
Sweeping the profile along the path	4-21
Creating a trimmed sketch	4-22
Extruding a cut	4-22
Questions for Review	4-23
Exercise: Using Equation Driven Curve	4-24
Exercise: Projected Curve & Composite Curve	4-30

Chapter 5

Advanced Modeling with Sweep & Loft

5-1

Water Pump Housing

5-2

Tools Needed

5-2

Understanding the draft options

5-3

Extruding the base with draft

5-4

Sketching the upper inlet port

5-5

Revolving the upper inlet port

5-5

Adding fillets

5-6

Creating offset-distance planes

5-7

Creating a loft feature

5-10

Creating the mounting bosses

5-11

Sketching the rear inlet port

5-12

Revolving the rear inlet port

5-12

Adding face Fillets

5-13

Mirroring the rear inlet port

5-15

Shelling the part

5-16

Adding a rib

5-17

Mirroring the rib

5-18

Adding fillets

5-19

Exercise: Loft without guide curves

5-21

Exercise: Loft with guide curves

5-23

Chapter 6

Loft vs. Sweep

6-1

Water Meter Housing

6-2

Tools Needed

6-2

Sketching the loft profile

6-3

Constructing loft profiles / features

6-5

Creating the inlet feature

6-6

Constructing the centerline parameter

6-10

Creating the outlet loft feature

6-11

Shelling the part

6-13

Extruding the left / right brackets

6-14

Constructing the upper ring

6-15

Adding fillets

6-17

Adding chamfers

6-18

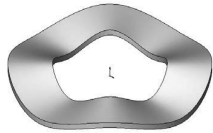


Questions for Review	6-19
Exercise: Loft	6-20
Exercise: Loft vs. boundary	6-23
Exercise: Mirror using two planes	6-26
Exercise: Tangent vs. curvature	6-27

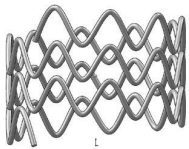
Chapter 7

Loft with Guide Curves 7-1

Waved Washer 7-2



Tools Needed	7-2
Creating the construction profile	7-3
Creating an offset distance plane	7-4
Positioning the derived sketch	7-5
Creating a curve through reference points	7-5
Sketching the loft sections	7-7
Creating the loft section using derived sketch	7-7
Creating a loft with guide curve	7-10
Hiding the construction sketches	7-11
Questions for review	7-12
Exercise: Using Curve Driven Pattern	7-13



Advanced Sweep 7-19

3D Sketch Sweep Path 7-20

Tools Needed 7-20

Creating the sweep path 7-21

Creating the sweep profile 7-22

Creating a sweep feature 7-23

Creating a circular Sketch pattern 7-25

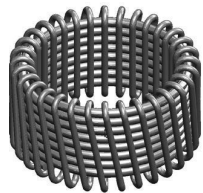
Converting to construction geometry 7-26

Creating a derived sketch 7-27

Creating a 3D sketch 7-28

Creating the sweep feature 7-32

Exercise: Using Curve Through Reference Points 7-33



Chapter 8

Using Surfaces 8-1

Advanced Modeling 8-2

Tools Needed 8-2

Constructing a new work plane 8-3

Sketching the 1st profile 8-3

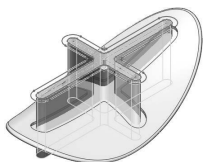
Creating a surface-loft 8-6







Splitting the surface 8-7





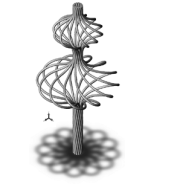
Deleting surfaces 8-8

Thickening the surface 8-9

Calculating the angle between the faces 8-10



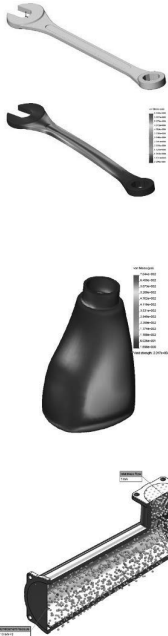
	Adding a full round fillet	8-12
	Sketching the slot contours	8-13
	Extruding cut the contour	8-15
	Questions for Review	8-17
	Lofted Surface	8-19
	Creating new offset planes	8-19
	Sketch the first profile	8-20
	Selecting the loft profiles	8-21
	Lofting between the profiles	8-22
	Creating a revolved sketch	8-23
	Copying the revolved surface	8-24
	Trimming the base part	8-25
	Hiding the surfaces	8-25
	Patching the right side opening	8-26
	Creating a Surface-Knit	8-29
	Adding fillets	8-30
	Creating a solid from the surface model	8-31
	Removing the upper half	8-32
	Questions for Review	8-36
	Exercise: Loft & Delete Face	8-37
Chapter 9	Offset Surface & Ruled Surface	9-1
	Tools Needed	9-2
	Using offset & ruled surface options	9-3
	Creating the base loft	9-4
	Creating split lines	9-5
	Creating offset surfaces	9-6
	Creating a ruled surface	9-7
	Knitting the 2 surfaces	9-8
	Showing the solid body	9-10
	Creating the surface cut	9-10
	Exercise: Using Loft	9-13
	Exercise: Advanced Surfacing Techniques	9-15
	Exercise: Using Split	9-25
	Creating a split line	9-25
	Making an offset surface	9-26
	Adding a ruled surface	9-26
	Deleting a surface	9-27
	Trimming surfaces	9-27
	Knitting the surfaces	9-28
	Adding fillets	9-29

Chapter 10	Advanced Surfaces	10-1
	Computer Mouse	10-2
	Tools Needed	10-2
	Sketching the profiles	10-3
	Extruding a surface	10-4
	Trimming the surfaces	10-5
	Mirroring the surfaces	10-6
	Creating the lower sketches	10-7
	Creating a new plane	10-9
	Making a 3-Point Arc	10-9
	Creating a planar surface	10-12
	Creating a knit surface	10-13
	Using Filled Surfaces	10-15
	Patch with Curvature Controls	10-15
	Tools Needed	10-16
	Enabling the surfaces toolbar	10-17
	Creating a planar surface	10-18
	Creating a surface fill with tangent control	10-18
	Creating a surface fill with curvature control	10-20
	Knitting all surfaces	10-21
	Patch Types	10-22
	Questions for Review	10-24
	Using Ruled Surfaces	10-25
	Creating a split line	10-25
	Creating an offset surface	10-26
	Adding a ruled surface	10-26
	Knitting and cutting the surfaces	10-27
	Shelling the model	10-29
Chapter 11	Surfaces vs. Solid Modeling	11-1
	Safety Helmet	11-2
	Tools Needed	11-2
	Constructing the body of Helmet	11-3
	Creating a new work plane	11-4
	Sketching the sweep-profile	11-4
	Creating the sweep path	11-5
	Adding a planar surface	11-6
	Knitting the three surface bodies into one	11-6
	Creating a section view	11-7
	Adding an extruded cut feature	11-7
		



Adding a revolve cut feature	11-9
Adding the side cut features	11-10
Creating the Cutout slot	11-11
Creating the sweep cut	11-13
Adding fillets	11-13
Exercise: Helmet_Surfaces	11-15
Exercise: Advanced Loft – Turbine Blades	11-26
Exercise: Advanced Sweep – Candle Holder	11-27
Advanced: Final Exam	11-34

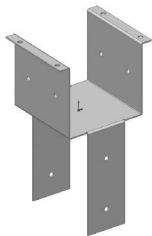
Chapter 12 SimulationXpress



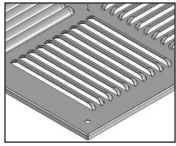
Using the Analysis Wizard	12-2
Tools Needed	12-2
Starting SimulationXpress	12-3
Setting up the units	12-4
Adding a fixture	12-5
Applying a force	12-7
Selecting the material	12-8
Analyzing the model	12-9
Viewing the Results	12-10
Creating the report	12-12
Generating the eDrawings file	12-16
Questions for Review	12-19
Exercise 1: SimulationXpress: Force	12-20
Exercise 2: SimulationXpress: Pressure	12-21
Exercise: Using SOLIDWORKS FlowXpress	12-23

Sheet Metal Topics

Chapter 13 Sheet Metal Parts

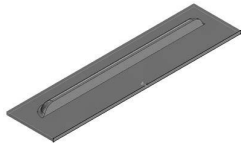


Post Cap	13-2
Tools Needed	13-2
Starting with the Base Profile	13-3
Extruding the Base Flange	13-3
Creating an Edge Flange	13-4
Editing the Edge Flange Profile	13-5
Viewing the Flat Pattern	13-6
Changing the Fixed Face	13-6
Creating a Sketched Bend	13-7
Adding Holes	13-9

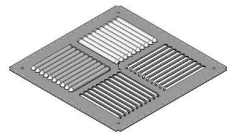


Switching to the Flat Pattern	13-12
Using Sheet Metal Costing	13-13
Inputting the information	13-14
Setting the Baseline	13-15
Questions for Review	13-17

Vents 13-18

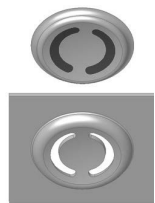


Tools Needed	13-19
Sketching the first profile	13-20
Extruding the Base-Flange	13-21
Creating the Miter-Flanges	13-22
Flattening the Part	13-24
Creating a new Forming Tool	13-25
Other Rectangle Options	13-26
Extruding the Base	13-27
Building the louver body	13-27
Creating the Positioning Sketch	13-31
Saving the Form Tool	13-33
Applying the Form Tool	13-34
Positioning the Form Tool	13-35
Adding a mounting hole	13-36
Creating a Linear Pattern	13-37
Creating an Axis	13-38
Creating a Circular Pattern	13-39
Questions for Review	13-40

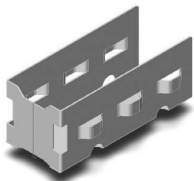


Chapter 14 Sheet Metal Forming Tools 14-1

Button with Slots 14-2

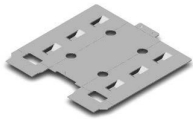


Tools Needed	14-2
Creating the Base Block	14-3
Revolving the Body	14-4
Sketching Slot Profiles	14-5
Creating the Split Lines	14-7
Adding more fillets	14-9
Inserting the forming tool feature	14-9
Saving the forming tool	14-10
Questions for Review	14-12
Exercise: Creating a custom forming tool	14-13



Designing Sheet Metal Parts – Tool Holder 14-23

Tools Needed	14-24
Starting with the Base Sketch	14-25
Creating an Edge Flange	14-26



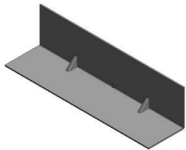
Adding Cut features	14-27
Extruding a cut	14-27
Using the Unfold Command	14-28
Using the Fold Command	14-30
Inserting a Sheet Metal Forming Tool	14-33
Locating the Bridge Lance	14-35
Creating the Linear Pattern of the Bridge Lance	14-36
Mirroring the Body	14-37
Adding Chamfers	14-40
Switching to the Flat Pattern	14-41
Questions for Review	14-42

Chapter 15 Sheet Metal Conversions

From IGES to SOLIDWORKS



Chapter 15 Sheet Metal Conversions	15-1
From IGES to SOLIDWORKS	15-2
Tools Needed	15-2
Opening an IGES Document	15-3
Creating the Rips	15-4
Inserting the Sheet Metal Parameters	15-5
Adding Fillets	15-6
Switching to a Flat Pattern	15-7
Questions for Review	15-8

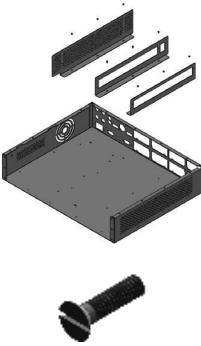



Sheet Metal Gussets	15-9
Opening a sheet metal part	15-9
Creating a gusset	15-9
Viewing the resulted gusset	15-11
Mirroring the gusset	15-12
Exercise: Tab and Slot	15-13
Exercise: Hem & Vent Features	15-15



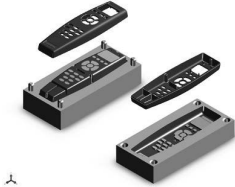
Flat Pattern Stent	15-19
Tools Needed	15-19
Converting to Sheet Metal	15-21
Unfolding the Part	15-21
Adding the Sketch Pattern	15-22
Folding the Part	15-24
Creating a new Configuration	15-25
Adding Fillets	15-25
Switching to Flatten Mode	15-26
Questions for Review	15-27
Exercise: Screen Mesh - Sheet Metal Approach	15-28



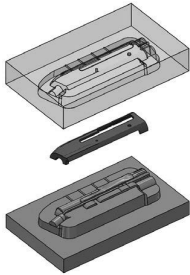
	Chapter 16 Working with Sheet Metal STEP Files	16-1
	Tools Needed	16-2
	Opening an Assembly Step File	16-3
	Mating the components	16-4
	Adding the Sheet Metal tool tab	16-7
	Inserting Sheet Metal parameters	16-8
	Viewing the Flat Pattern	16-9
	Converting other components	16-9
	Using the Hole Series	16-11
	Using the Hole Wizard	16-13
	Adding the Smart Fasteners	16-15
	Creating an Exploded View	16-17
	Adding Parts to the Toolbox Library	16-18
	Starting the Toolbox Settings Utility	16-18
	Activating Toolbox	16-21
	Locating the new part	16-22
	Viewing the new part	16-22
	Adding a Part Number and Description Sheet Metal Assembly	16-23 16-24
	Chapter 17 Advanced Weldments	17-1
	Weldments Platform	17-2
	Tools Needed	17-2
	Adding the weldments toolbar	17-3
	Adding the structural members	17-4
	Viewing the overlapped areas	17-8
	Trimming the overlapped areas	17-9
	Updating the cut list	17-12
	Using Weldments – Structural Members	17-14
	Enabling the Weldment Toolbar	17-14
	Adding Structural Members	17-15
	Setting the Corner Treatments	17-15
	Adding Structural Members to Contiguous Groups	17-16
	Adding Structural Members to the Parallel Groups	17-17
	Trimming the Structural Members	17-19
	Adding the foot pads	17-26
	Adding the Gussets	17-27
	Adding the Fillet Beads	17-29
	Viewing the Weldment Cut List	17-31
	Updating the Cut List	17-32
	Creating a drawing	17-33

Mold Tools Design Topics

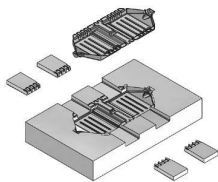
Chapter 18	Creating a Core and Cavity Mold	18-1
	Linear Parting Lines	18-2
	Tools Needed	18-2
	Opening an existing Parasolid document	18-3
	Creating the Parting Lines	18-4
	Creating the Shut-Off Surfaces	18-5
	Creating the Parting Surfaces	18-6
	Sketching the profile of the mold blocks	18-7
	Creating the Tooling Split	18-8
	Saving the bodies as part files	18-10
	Separating the 2 blocks	18-11
	Exercise: Linear Parting Lines	18-13
	Questions for Review	18-19



Chapter 19	Non-Planar Parting Lines	19-1
	Mold-Tooling Design	19-2
	Tools Needed	19-2
	Enabling the Mold Tools toolbar	19-3
	Creating the Parting Lines	19-4
	Creating the Shut-Off Surfaces	19-5
	Creating the Parting Surfaces	19-6
	Creating a Ruled Surface	19-7
	Creating the patches	19-9
	Knitting the surfaces	19-13
	Trimming the bottom of the ruled surface	19-15
	Creating the Tooling Split sketch	19-16
	Separating the solid bodies	19-18
	Making the body transparent	19-19

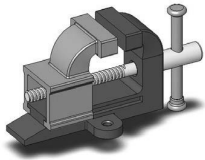


	Creating Slides and Cores	19-21
	Tools Needed	19-22
	Opening a part document	19-23
	Analyzing the undercuts	19-23
	Analysis parameters explained	19-24
	Scaling the part	19-25
	Creating the parting lines	19-26
	Creating the parting surfaces	19-27
	Creating a new sketch	19-28
	Creating the tooling split	19-29
	Finalizing the block sizes	19-29

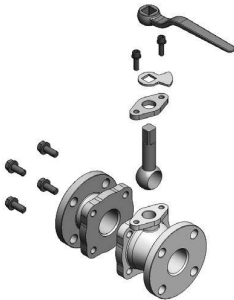


Renaming the bodies and assigning materials	19-32
Creating the front slide core	19-32
Creating the back slide core	19-34
Creating an exploded view	19-35

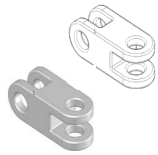
Chapter 20	Top Down Assembly – Part 1	20-1
	Miniature Vise	20-2
	Tools Needed	20-2
	Creating the Base part	20-3
	Adding the side flanges	20-5
	Creating an offset distance plane	20-7
	Creating the 3D Guide Curves	20-9
	Creating the fixed jaw clamp	20-11
	Creating a new component: The slide jaw	20-14
	Using the offset entities command	20-15
	Sketching the Guide Curve	20-20
	Creating the clamp block	20-22
	Extruding the clamp block	20-23
	Creating the Internal threads	20-26
	Creating a Section View	20-29
	Questions for Review	20-32



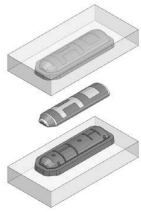
Chapter 21	Top-Down Assembly – Part 2	21-1
	Water Control Valve	21-2
	Tools Needed	21-2
	Starting a New Assembly Template	21-3
	Creating the 1st Component	21-4
	Adding the Inlet Flange	21-5
	Adding the Mounting Holes	21-6
	Adding Chamfers and Fillets	21-8
	Saving as Virtual Component	21-10
	Creating the 2nd Component	21-10
	Creating the Transition Body	21-12
	Adding another mounting Flange	21-13
	Adding an Offset-Distance plane	21-14
	Exiting the Edit Component Mode	21-20
	Applying dimension changes	21-20
	Viewing the External Reference Symbols	21-22
	Inserting other components	21-23
	Questions for Review	21-25



Chapter 22	External References & Repair Errors	22-1
	External Reference Symbols	22-2



Understanding & Removing External References	22-3
Removing External References	22-3
Understanding the External Symbols	22-4
Repairing the Sketches	22-5
Rebuilding the model	22-7
Questions for Review	22-8
Understanding and Repairing Part Errors	22-9
Repair Errors & External References	22-16



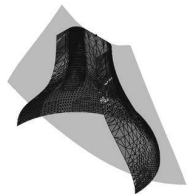
Final Exam_1 of 2_Handle Mold	22-24
Final Exam_2 of 2_Mouse Mold	22-28

Chapter 23 Using Appearances 23-1

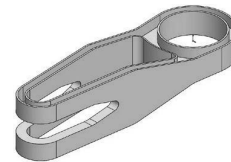
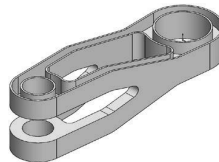


Modeling diamond knurls	23-1
Applying the knurl appearance	23-5
Applying wire mesh appearance	23-8
Applying the Car-Paint Appearance	23-11
Flatten Surfaces	23-16
Exercise: Flattening a shoe sole	23-20

Certification Practice for the CSWP Mechanical Design Exam 24-1



Challenge I: Part Modeling & Modifications	24-2
Challenge II: Part Modifications & Configurations	24-18
Challenge III: Bottom Up Assembly & Mates	24-39



Glossary, Index, and SOLIDWORKS 2026 Quick-Guide

Quick Reference Guide to SOLIDWORKS 2026 Command Icons and Toolbars.

