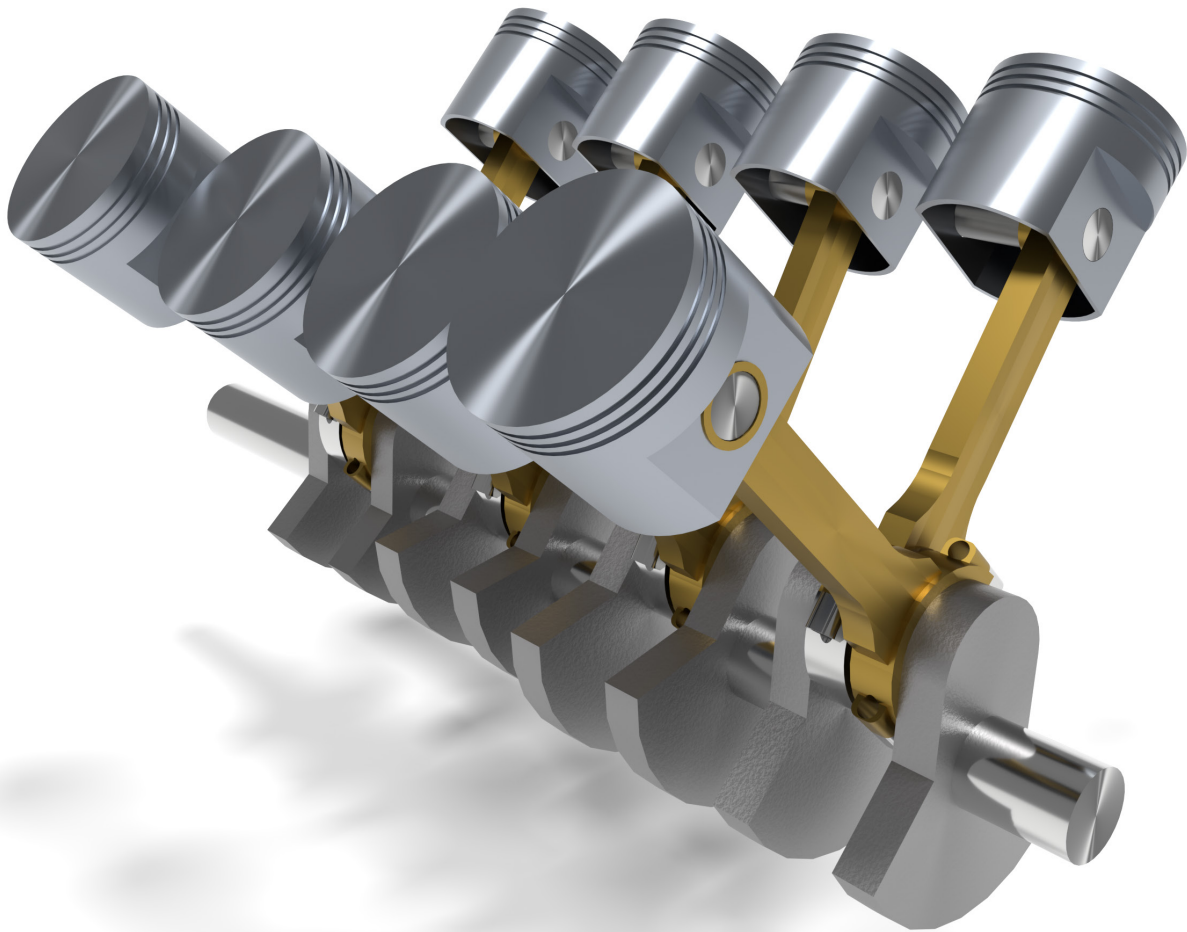


Creo® Parametric 12.0 Tutorial



Roger Toogood Ph.D.
David Rocheleau Ph.D., P.E.

Visit the following websites to learn more about this book:



[amazon.com](https://www.amazon.com)

[Google books](https://books.google.com)

[BARNES & NOBLE](https://www.barnesandnoble.com)

TABLE OF CONTENTS

| | |
|--|-----|
| Preface | i |
| Notes for the Creo Parametric 12.0 Edition | i |
| Note to Instructors | ii |
| Acknowledgments | iii |
| Table of Contents | v |

Introduction to Creo Parametric

| | |
|--|-----------|
| A Few Words Before You Dive In... | Intro - 1 |
| What <i>IS</i> Creo Parametric? | Intro - 2 |
| This sounds like it's pretty complicated!... | Intro - 5 |
| Overview of the Lessons | Intro - 6 |
| On-Line Help | Intro - 9 |

Lesson 1: User Interface, View Controls and Model Structure

| | |
|--|--------|
| Synopsis | 1 - 1 |
| Overview of this Lesson | 1 - 1 |
| Starting Creo Parametric | 1 - 3 |
| How commands are entered into Creo Parametric | 1 - 5 |
| The Quick Access and Graphics Toolbars | 1 - 5 |
| The Ribbon User Interface | 1 - 5 |
| Automatic Pop-up Menus | 1 - 5 |
| Right Mouse Button (RMB) Pop-up Menus | 1 - 5 |
| Pull-Down Menus | 1 - 6 |
| Dialog Windows | 1 - 6 |
| Menu Picks | 1 - 6 |
| Keyboard Entry | 1 - 8 |
| Mouse Functions | 1 - 8 |
| How this tutorial will represent the command sequence | 1 - 9 |
| Table 1-1 Common Creo Parametric Mouse Functions (3D) | 1 - 10 |
| How to get Online Help | 1 - 12 |
| Tutorial Files and Working Directory | 1 - 15 |
| Controlling the Screen: View and Display Commands | 1 - 17 |
| Opening a Part File | 1 - 17 |
| View Controls using the Mouse | 1 - 19 |
| Spin Center On (Default) | 1 - 19 |
| Spin Center Off | 1 - 20 |
| Graphics Toolbar View Commands | 1 - 22 |
| Using Pre-defined Orientations | 1 - 22 |
| Object Display Commands | 1 - 24 |
| Making Bodies Transparent | 1 - 24 |
| Datum Display Commands | 1 - 24 |
| Some Comments on Display Style | 1 - 25 |
| Anatomy of a Part - The Model Structure | 1 - 25 |

| | |
|---|--------|
| Preselection Highlighting | 1 - 26 |
| Expanding the Model Tree | 1 - 27 |
| The Design Tree | 1 - 29 |
| Introduction to Multibody Modeling | 1 - 30 |
| The Model Player | 1 - 31 |
| Exploring the Structure of a Part | 1 - 31 |
| Modifying Dimensions | 1 - 35 |
| Parent/Child Relations | 1 - 37 |
| Anatomy of an Assembly | 1 - 38 |
| An Assembly BOM (Bill of Materials) | 1 - 40 |
| Modifying the Assembly | 1 - 41 |
| Exploding an Assembly | 1 - 43 |
| Opening Parts in an Assembly | 1 - 43 |
| Obtaining Hard Copy | 1 - 44 |
| Leaving Creo Parametric | 1 - 45 |
| Questions for Review | 1 - 46 |
| Exercises | 1 - 48 |

Lesson 2: Creating a Simple Object (Part I)

| | |
|---|------|
| Synopsis | 2-1 |
| Overview of this Lesson | 2-1 |
| Creating a Simple Part | 2-2 |
| Creating and Naming the Part | 2-2 |
| Create Datum Planes | 2-3 |
| Part Modeling Feature Overview | 2-4 |
| Introducing Sketcher | 2-5 |
| Table 2-1 Implicit Constraints in Sketcher | 2-7 |
| Two Ways to use Sketcher to Create Shaped Features | 2-8 |
| Table 2-2 Steps to create a sketched feature | 2-9 |
| Creating a Sketched Curve | 2-9 |
| Setting Sketch Orientation | 2-9 |
| The Sketch Ribbon | 2-13 |
| Table 2-3 Explicit Constraints in Sketcher | 2-15 |
| Creating the Sketch | 2-15 |
| Weak vs Strong Dimensions | 2-17 |
| Sketcher Diagnostic Functions | 2-19 |
| Creating a Solid Protrusion | 2-21 |
| The Extrude Dashboard | 2-22 |
| Saving the Part | 2-26 |
| Creating an Extruded Cut | 2-26 |
| Using Part Templates | 2-31 |
| Questions for Review | 2-33 |
| Exercises | 2-35 |

Lesson 3: Creating a Simple Object (Part II)

| | |
|--|--------|
| Synopsis | 3 - 1 |
| Overview of this Lesson..... | 3 - 1 |
| Retrieving a Part..... | 3 - 2 |
| Creating a Hole..... | 3 - 3 |
| Creating a Chamfer | 3 - 7 |
| Creating a Round | 3 - 9 |
| Exploring the Model | 3 - 12 |
| Configuring the Model Tree..... | 3 - 12 |
| Naming Features | 3 - 13 |
| Exploring Parent/Child Relations..... | 3 - 14 |
| Modifying Dimensions..... | 3 - 16 |
| Creating Feature Relations | 3 - 19 |
| More about relations | 3 - 22 |
| Considering Design Intent..... | 3 - 23 |
| Design Intent Alternative #1 | 3 - 23 |
| Design Intent Alternative #2 | 3 - 23 |
| Design Intent Alternative #3 | 3 - 25 |
| More Sketcher Tools..... | 3 - 25 |
| The <i>Modify</i> Command..... | 3 - 25 |
| Sketcher Relations..... | 3 - 26 |
| Sketcher Preferences | 3 - 27 |
| Using <i>Redo</i> | 3 - 27 |
| Creo Parametric Files Saved Automatically..... | 3 - 28 |
| Questions for Review | 3 - 30 |
| Exercises | 3 - 31 |
| Project | 3 - 34 |

Lesson 4: Revolved Protrusions, Mirror Copies, Model Analysis

| | |
|--|--------|
| Synopsis | 4 - 1 |
| Overview of this Lesson..... | 4 - 1 |
| Creating the Base Feature | 4 - 2 |
| Creating a Revolved Protrusion | 4 - 7 |
| Adding and Mirroring a Cut..... | 4 - 10 |
| Creating a Mirror Copy | 4 - 11 |
| Creating Holes..... | 4 - 13 |
| Having Problems Mirroring? | 4 - 14 |
| Creating Rounds..... | 4 - 14 |
| Using Edge Sets with <i>Chamfer</i> | 4 - 16 |
| Saving the Part | 4 - 18 |
| Model Analysis Tools | 4 - 18 |
| Determining Mass Properties | 4 - 19 |
| Exploring the Model, or “What Can Go Wrong?” | 4 - 20 |
| Introduction to Multibody Modeling | 4 - 22 |
| Questions for Review | 4 - 25 |

| | |
|-----------------|--------|
| Exercises | 4 - 26 |
| Project | 4 - 30 |

Lesson 5: Modeling Utilities

| | |
|--|--------|
| Synopsis | 5 - 1 |
| Overview of this Lesson..... | 5 - 1 |
| Obtaining Information about the Model | 5 - 2 |
| The Regeneration Sequence | 5 - 3 |
| The Feature List | 5 - 3 |
| The Model Tree..... | 5 - 4 |
| Parent/Child Relations..... | 5 - 5 |
| Suppressing and Resuming Features..... | 5 - 7 |
| Suppressing versus Hiding | 5 - 9 |
| Modifying Feature Definitions | 5 - 9 |
| ① Changing the shape of a sketch (<i>Edit Definition</i>) | 5 - 11 |
| ② Changing a Feature Reference (<i>Edit References</i>) | 5 - 12 |
| ③ Changing the Sketcher Constraints (<i>Edit Definition</i>) | 5 - 13 |
| ④ Changing a Feature Reference (<i>Edit References</i>) | 5 - 14 |
| ⑤ Changing Feature Attributes (<i>Edit Definition</i>) | 5 - 14 |
| ⑥ Changing the Regeneration Sequence using <i>Reorder</i> | 5 - 16 |
| ⑦ Changing the Insertion Point..... | 5 - 16 |
| Conclusion..... | 5 - 18 |
| Questions for Review | 5 - 19 |
| Exercises | 5 - 20 |
| Project | 5 - 23 |

Lesson 6: Datum Planes and Sketcher Tools

| | |
|---|--------|
| Synopsis | 6 - 1 |
| Overview of this Lesson..... | 6 - 1 |
| Overview of Datum Planes and Axes | 6 - 2 |
| Creating a Datum Plane and Datum Axis | 6 - 4 |
| Creating the <i>Cutter</i> Base Feature | 6 - 6 |
| Creating a Both Sides, Coaxial Hole..... | 6 - 10 |
| First Tooth - Offset Datum..... | 6 - 11 |
| Second Tooth - Normal and Tangent Datum | 6 - 12 |
| Third Tooth - Using Make Datums | 6 - 14 |
| Exploring the Model | 6 - 17 |
| Considering <i>Design Intent</i> | 6 - 18 |
| Using <i>Sketch Regions</i> | 6 - 19 |
| Questions for Review | 6 - 21 |
| Exercises | 6 - 22 |
| Project | 6 - 23 |

Lesson 7: Patterns and Copies

| | |
|---|--------|
| Synopsis | 7 - 1 |
| Overview of this Lesson..... | 7 - 1 |
| Patterned Features | 7 - 2 |
| Naming Dimension Symbols | 7 - 3 |
| Creating a Uni-directional Pattern | 7 - 4 |
| Creating a Bi-directional Pattern..... | 7 - 6 |
| Pattern Options..... | 7 - 7 |
| Creating a Simple Radial Pattern | 7 - 8 |
| Setting up Pattern Relations | 7 - 10 |
| A Pattern of Grouped Features..... | 7 - 12 |
| Radial Patterns of Shaped Features..... | 7 - 14 |
| Radial Pattern using <i>Make Datum</i> as Sketching Plane | 7 - 14 |
| Radial Pattern using <i>Make Datum</i> as Reference Plane | 7 - 17 |
| Copying Features with <i>Paste</i> and <i>Paste Special</i> | 7 - 20 |
| Copying using <i>Paste</i> | 7 - 21 |
| Copying using <i>Paste Special</i> | 7 - 24 |
| Making Dimensions Independent..... | 7 - 27 |
| <i>Paste Special</i> Using Translated and Rotated copies | 7 - 28 |
| Exploring the Model | 7 - 30 |
| Design Considerations..... | 7 - 31 |
| Questions for Review | 7 - 33 |
| Exercises | 7 - 34 |
| Project | 7 - 35 |

Lesson 8: Engineering Drawings

| | |
|---|--------|
| Synopsis | 8 - 1 |
| Overview of this Lesson..... | 8 - 1 |
| The Drawing Environment..... | 8 - 3 |
| Drawing Interface..... | 8 - 3 |
| Mouse Controls in Drawing Mode..... | 8 - 5 |
| Drawing Ribbon and Drawing Tree..... | 8 - 5 |
| Layout | 8 - 6 |
| Table..... | 8 - 6 |
| Annotate | 8 - 6 |
| Sketch..... | 8 - 7 |
| Review..... | 8 - 7 |
| <i>Shown vs Created</i> Dimensions..... | 8 - 8 |
| Table 8.1 The Mysteries of Model vs Draft Dimensions | 8 - 8 |
| Dimension Properties | 8 - 9 |
| Exploring Associativity..... | 8 - 10 |
| The L-Bracket | 8 - 12 |
| Creating the Part..... | 8 - 12 |
| Changing Part Units | 8 - 12 |
| Creating the Drawing of the L-Bracket..... | 8 - 13 |

| | |
|--|--------|
| ① Create the Drawing File..... | 8 - 13 |
| ② Adding Views | 8 - 14 |
| ③ Setting View Display Mode | 8 - 16 |
| ④ Adding Dimensioning Detail | 8 - 17 |
| ⑤ Dimension Cosmetics..... | 8 - 18 |
| ⑥ Creating a Note..... | 8 - 22 |
| Exploring Associativity | 8 - 23 |
| Printing and Exporting the Drawing | 8 - 26 |
| Using Drawing Templates..... | 8 - 27 |
| The Pulley | 8 - 28 |
| Creating the Pulley..... | 8 - 28 |
| Creating the Drawing..... | 8 - 31 |
| ① Selecting a Formatted Sheet..... | 8 - 31 |
| ② Creating the Primary View | 8 - 31 |
| ③ Add a Full Section View | 8 - 32 |
| ④ Modify the Section View Display..... | 8 - 34 |
| ⑤ Adding a Detail View..... | 8 - 34 |
| ⑥ Adding Dimension Details | 8 - 36 |
| ⑦ Improving the Esthetics..... | 8 - 37 |
| ⑧ Changing Drawing Options..... | 8 - 37 |
| ⑨ Adding Notes with Parameters..... | 8 - 38 |
| ⑩ Creating Dimensions | 8 - 40 |
| Conclusion..... | 8 - 40 |
| Questions for Review..... | 8 - 41 |
| Exercises | 8 - 43 |
| Project | 8 - 44 |

Lesson 9: Assembly Fundamentals

| | |
|--|--------|
| Synopsis | 9 - 1 |
| Overview of this Lesson..... | 9 - 1 |
| Collecting the Assembly Components | 9 - 2 |
| Assembly Constraints..... | 9 - 2 |
| <i>Default</i> Constraint | 9 - 4 |
| <i>Coincident</i> Constraint..... | 9 - 5 |
| <i>Normal</i> Constraint | 9 - 5 |
| <i>Distance</i> Constraint..... | 9 - 6 |
| <i>Parallel</i> Constraint | 9 - 7 |
| <i>Angle Offset</i> Constraint | 9 - 7 |
| <i>Tangent</i> Constraint | 9 - 7 |
| <i>Fix</i> Constraint..... | 9 - 7 |
| Assembly Design Issues..... | 9 - 8 |
| Assembling the Components..... | 9 - 9 |
| Creating a Subassembly | 9 - 9 |
| The 3D Dragger..... | 9 - 12 |
| Using <i>Allow Assumptions</i> | 9 - 14 |
| Creating the Main Assembly..... | 9 - 17 |

| | |
|--|--------|
| Adding a Subassembly | 9 - 18 |
| Using <i>Copy</i> with Components..... | 9 - 24 |
| Assigning Appearances to Components..... | 9 - 25 |
| Questions for Review | 9 - 30 |
| Project | 9 - 32 |

Lesson 10: Assembly Operations

| | |
|---|---------|
| Synopsis | 10 - 1 |
| Overview of this Lesson..... | 10 - 1 |
| Assembly Information..... | 10 - 2 |
| Assembly Features | 10 - 4 |
| Creating Assembly Features..... | 10 - 4 |
| Assembly Display Management..... | 10 - 5 |
| Assembly and Part Modifications | 10 - 7 |
| Active Components and Visibility | 10 - 7 |
| Changing Part Dimensions..... | 10 - 8 |
| Adding another Assembly Feature..... | 10 - 10 |
| Changing Feature Visibility | 10 - 11 |
| Changing the Active Component | 10 - 12 |
| Part Creation in Assembly Mode | 10 - 13 |
| Exploding the Assembly | 10 - 16 |
| Component Display Style | 10 - 18 |
| Modifying Component Display Styles..... | 10 - 19 |
| Modifying the Explode State | 10 - 21 |
| Sections | 10 - 22 |
| Assembly Drawings | 10 - 25 |
| Questions for Review | 10 - 28 |
| Project | 10 - 30 |

Lesson 11: Sweeps and Blends

| | |
|--|---------|
| Synopsis | 11 - 1 |
| Overview of this Lesson..... | 11 - 1 |
| Sweeps | 11 - 2 |
| Sweep #1 - The S-Bracket..... | 11 - 2 |
| Alternate Method for Creating Sweep | 11 - 5 |
| Extending the Trajectory | 11 - 6 |
| Alternate Method #2 for Creating Sweep with Curve “On-the-fly” | 11 - 7 |
| Sweep #2: The Lawn Sprinkler..... | 11 - 8 |
| Creating an <i>Axis</i> Pattern | 11 - 9 |
| Creating a Sketched Hole..... | 11 - 11 |
| Blends..... | 11 - 13 |
| Parallel Blend..... | 11 - 14 |
| The <i>Shell</i> Command..... | 11 - 17 |
| Rotational Blend | 11 - 18 |
| Conclusion..... | 11 - 22 |

| | |
|----------------------------|---------|
| Questions for Review | 11 - 23 |
| Exercises | 11 - 24 |

Appendix: Creo Parametric Customization

| | |
|---|-------|
| Synopsis | A - 1 |
| Overview | A - 1 |
| Configuration Settings | A - 1 |
| Configuration Files (<i>config.pro</i>) | A - 3 |
| The Configuration File Editor | A - 4 |
| Adding Settings to <i>config.pro</i> | A - 5 |
| Saving Your <i>config.pro</i> Settings | A - 7 |
| Loading a Configuration File | A - 7 |
| Deleting Configuration Options | A - 7 |
| Creating Configuration Favorites | A - 8 |
| Checking Your Configuration Options | A - 8 |
| Customizing the Toolbars | A - 9 |
| Customizing Ribbon Tabs and Groups | A - 9 |